



## Regular Meetings

To see a complete list of meetings go to  
[www.stcharlesil.gov/meetings](http://www.stcharlesil.gov/meetings)

### Youth Commission

1.5.15.....6:00 pm

### City Council

1.5.15.....7:00 pm

### Government Operations

1.5.15.....7:05 pm

### Corridor Improvement Commission

1.7.15.....7:00 pm

### Historic Preservation Commission

1.7.15.....7:00 pm

### Tree Commission

1.8.15.....7:00 pm

### Planning & Development

1.12.15.....7:00 pm

### Liquor Control Commission

1.20.15.....4:30 pm

### City Council

1.20.15.....7:00 pm

### Plan Commission

1.20.15.....7:00 pm

### Government Operations

1.20.15.....7:05 pm

### Historic Preservation Commission

1.21.15.....7:00 pm

### Government Services

1.26.15.....7:00 pm

## Public Hearings

[Second Amendment to the First Street  
TIF Redevelopment Project](#)

1.20.15.....6:50 p.m.

[Proposed Central Downtown  
Redevelopment Project Area](#)

1.20.15.....6:55 p.m.

## Looking Back: The City's "Greatest Hits of 2014" Plus a Look Ahead at the Brand New Year

*So many good things happened in our city last year, and a quick look ahead shows promising, new opportunities for 2015--we can't wait to see how they unfold. Please enjoy this walk through the City's "Greatest Hits of 2014":*

- ◆ Developers of The QUAD broke ground on Sept. 3 as site and utility work began outside. Site work will continue this spring, followed by work on the actual structure. The QUAD has an anticipated 2016 opening.
- ◆ New businesses opened from east Main Street to Randall Road and everywhere in between.
- ◆ For the sixth consecutive year, the city has frozen its operating levy, keeping the City's portion of property taxes constant.
- ◆ Infrastructure improvements rolled on, including:
  - Completion of a new \$8.8 million Biosolids and Operations Building at the Main Wastewater Treatment Plant.
  - \$1 million replacement and improvement of the north Municipal Parking Lot.
  - Resurfacing of South Tyler Road with a \$500,000 matching State grant.
- ◆ The City was recognized with several awards and accreditations, including:
  - The Police Department renewed accreditation through the Commission on Accreditation for Law Enforcement Agencies and finished 3rd in the Champion Class Category of the 2013 Illinois Traffic Safety Challenge sponsored by the Illinois Association of Chiefs of Police Traffic Committee.
  - Our Emergency Management Agency (EMA) earned accreditation through the Illinois EMA.
  - Our electric utility received the Municipality of the Year award from the Illinois Municipal Electric Agency.



*continued on page 2*



CITY OF  
ST. CHARLES

ILLINOIS • SINCE 1834

**#1 City for Families**  
St. Charles named by FamilyCircle 2011

# The City's "Greatest Hits of 2014"

*continued from page 1*

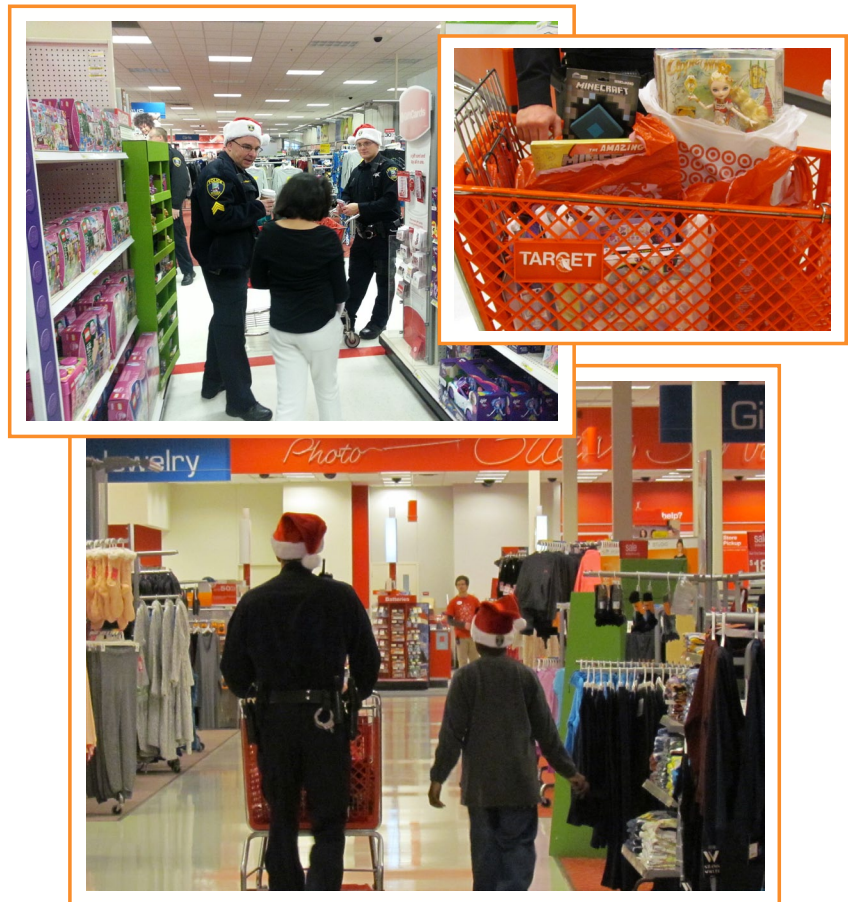
- The City's Comprehensive Annual Financial Report for the year ended April 30, 2013, received its 28th consecutive Certificate of Achievement from the Government Finance Officers Association of the United States and Canada.
- Our Workplace Wellness program was recognized as a stand-out by the TriCity Family Services Employee Assistance Program.

## Coming up in 2015...

- ◆ New plans for First Street have gotten the preliminary nod from the Plan and Historic Preservation commissions. The full City Council will review the proposal in early 2015.
- ◆ Thoughtful planning for the future continues as an update to the City's strategic plan gets underway.
- ◆ The River Corridor Commission, along with the Park District, the Forest Preserve and the City will study increasing the utilization of our great natural asset, the Fox River.
- ◆ It's an Election Year! The Consolidated Election is April 7 and five aldermanic seats are up for election. Be sure to get out and vote.
- ◆ The Municipal Building turns 75—and never looked better. Built in 1940, famed architect R. Harold Zook's creation is a striking example of Art Moderne-style. The distinctive 84-ft. marble tower with stained glass windows makes it one of the most memorable buildings in town.
- ◆ 2015 is the Year of the Scarecrow, commemorating the 30th Anniversary of this popular festival. There will be plenty of sightings around town all year long of "Chuck & Char," the festival mascots.

## 2nd Annual Shop with a Cop Reaches out to Children In Need

The St. Charles Police Patrolman's Association (Metropolitan Alliance of Police Chapter 27) hosted its second "Shop with a Cop" event last month at the St. Charles Super Target. 20 officers came out to shop with 10 children whose families are being assisted by Lazarus House. Each child received \$250 to spend. The officers helped the children shop, check out, wrap, and then just spent time with them. The holidays certainly were a little brighter for these families thanks to the kindness and generosity of our officers.



## Help a Neighbor in Need

Please consider donating to our annual Neighbors in Need fund to help struggling St. Charles residents pay their city utility bills. Over the last eight years, residents have generously donated to help local families.

If you would like to donate, please list the amount to give on the payment stub of your utility bill and add it to the amount of your payment. All donations go directly to helping St. Charles residents—none of the funds are used for administrative costs.

The City works with the Salvation Army and St. Vincent DePaul to administer the program. For questions, please contact Utility Billing at **630-377-4426** or [utilitybilling@stcharlesil.gov](mailto:utilitybilling@stcharlesil.gov).



## Think Spring!

### *50/50 Parkway Tree Program*

It's not too soon to start planning for spring planting. The City again is offering the "50/50 Parkway Tree Planting Program" that shares the cost of planting a new tree in your parkway. Contact the Public Works Department to request a review of your parkway if you are interested. Parkway must be reviewed and approved for planting before an order will be placed. Please do not send payment now. Once approved, you will receive a confirmation letter, order form, and details on how to order.

#### *Available Trees for Spring 2015*

Chanticleer Pear \$170

Accolade Elm \$175

Redmond Linden \$175

Skyline Honey Locust \$175

London Planetree \$180

Hackberry \$195

Swamp White Oak \$225

#### *Good Under Power Lines*

Prairie Fire Crabapple \$135

Red Jewel Crabapple \$135

Japanese Tree Lilac \$175

## Got a New Mobile Gadget this Holiday?

### *Bring Us With You!*

If you got a new mobile phone or tablet for the holidays then you'll want to install St. Charles Connect, the app that keeps you connected with the City of St. Charles. St. Charles Connect is a handy way to let us know about issues--like a street light that's out--or to ask us questions.

It should not be used to report an emergency or any time-sensitive issues; in those cases dial 911. And it's not a replacement for the power outage reporting system, for that dial **866-444-0016**.

You also can log into St. Charles Connect online at [www.stcharlesil.gov/connect](http://www.stcharlesil.gov/connect).



ST. CHARLES CONNECT

More information on tree species is available on the 50/50 Parkway Tree page of our website [www.stcharlesil.gov](http://www.stcharlesil.gov). Larger size trees are available at an additional cost of \$100 per 1/2-inch diameter upgrade. For more information, contact the Public Works Department at [pw@stcharlesil.gov](mailto:pw@stcharlesil.gov) or **630.377.4405**.



## City Crews are Prepared for Winter Weather

*Public Works staff is prepared to maintain safe road conditions for our community this winter. The City uses a computerized forecasting system to monitor the weather and crews are scheduled and ready to respond around the clock. The foundation of our successful snow program is the ability to mobilize equipment and personnel for any storm event, including light or heavy snowfall and ice storms.*

Our plowing and de-icing operations tackle the main routes, connector roads, school zones and downtown areas first to keep the majority of traffic and emergency routes cleared. Once these areas are cleared and safe for travel, City crews and contractors begin clearing neighborhood streets, cul-de-sacs, alleys and parking lots.



- **Weather.** Many of our functions are weather-dependent. The city uses a computerized forecasting system to monitor the weather. This system alerts staff to incoming weather systems by type (snow, ice, etc.), and gives information about duration and time of expected onset. It also provides customized treatment recommendations.

- **Brine.** The City uses brine as a pre-wetting application before most snowfalls. The brine provides a buffer between the street surface and the snow, which aids in snow removal. The city produces its own brine, which is a mixture of salt, water and a commercial product.

The brine is applied to the streets from a liquid tank truck when snow or ice is expected. For more information, call Public Works at **630-377-4405** or visit [www.stcharlesil.gov](http://www.stcharlesil.gov).

---

## Clearing State & County Roads

*The following roads are plowed and maintained by the Illinois Department of Transportation, 847.705.4228:*

- Rt. 31 north of the railroad trestle
- Rt. 25 north of Johnnor Ave.
- Rt. 64 west of Randall Road
- Rt. 64 east of 13th Ave.

*The following roads are plowed and maintained by the Kane County Highway Department, 630.584.1170:*

- Kirk Road south of Rt. 64
- Kirk Road/Dunham Road north of Royal Fox Drive
- Country Club Road from Persimmon Drive to Dunham Road
- Randall Road

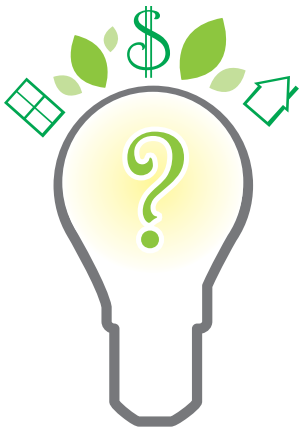
### City Roads

All other city streets are maintained by the City of St. Charles Public Works Department, **630-377-4405**.

Anti-icing/salting and plowing operations are all parts of the City's snow program. City staff maintains the nearly 171 lane miles of main roads, secondary roads, alleys, side streets, parking lots and cul-de-sacs. Your cooperation and understanding greatly enhances our efforts to provide the best service possible. Contact Public Works Department for more information at **630.377.4405** or [pw@stcharlesil.gov](mailto:pw@stcharlesil.gov).

## Christmas Tree Pickup

Christmas trees will be picked up during the weeks of Jan. 5 & 12, 2015, on both sides of the river on the regularly scheduled refuse day. After the two-week period, a sticker will be required for pick up. Trees are not to be placed in disposal bags. Residents should note that all decorations, including tinsel, must be removed. For questions, please contact Public Works at **630.377.4405**/[pw@stcharlesil.gov](mailto:pw@stcharlesil.gov) or Advanced Disposal Services Inc. at **630.587.8282**.



## Perform an Energy Audit for Your Home

*Want to find out more about your electricity usage and costs? City of St. Charles Municipal Electric Utility customers can perform an energy audit on their homes right from our website.*

This online program is provided in conjunction with our energy supplier, the Illinois Municipal Electric Agency. Access the program from the [Green St. Charles page](#) of the City's website. Simply click the [Home Energy Calculator box](#) and the program allows you to enter data about your home, and calculate both energy costs and potential savings expected by making specific improvements. There's even a library section for energy information and a fun area for kids and teachers to learn about energy savings. For more information, contact Tom Bruhl at [tbruhl@stcharlesil.gov](mailto:tbruhl@stcharlesil.gov).

## Prepare Your Vehicle for the Winter

*Generally, winter storms can be accurately forecasted about two or three days in advance. Please heed the National Weather Service's warnings. Also, eliminate some of the hazards of winter travel by not venturing out unless it's absolutely necessary. Here are some tips for winterizing your car:*



- Have a mechanic take a look at your vehicle to check belts and hoses, heat and defrosting units, brakes and transmission, filters and fluids, etc.
- Regularly check your wipers and wiper fluid, tires and tire pressure, lights and battery, antifreeze and oil levels. Lubricate door and trunk locks to prevent them from freezing. Always keep your fuel tank full.
- Prepare a Winter Storm Survival Kit (*see an example on the right*) and carry it in your vehicle—even for short trips. If you have an accident or breakdown, you may be waiting several hours for assistance.

For more information, please contact Paul Bumba, Emergency Preparedness Coordinator at [pbumba@stcharlesil.gov](mailto:pbumba@stcharlesil.gov) or 630.762.7091.

## Winter Storm Survival Kit for Travelers

- ☐ Cell phone and charger
- ☐ Blankets/sleeping bags
- ☐ Flashlight with extra batteries
- ☐ First-aid kit
- ☐ Knife
- ☐ High-calorie, non-perishable food
- ☐ Water
- ☐ Extra clothing to keep dry
- ☐ A large empty can and plastic cover with tissues and paper towels for sanitary purposes
- ☐ A smaller can and water-proof matches to melt snow for drinking water
- ☐ Sack of sand (or cat litter)
- ☐ Shovel
- ☐ Windshield scraper and brush
- ☐ Tool kit
- ☐ Tow rope with loops (avoid chains and hooks if possible)
- ☐ Booster cables
- ☐ Water container
- ☐ Compass and road maps



A big thank you to all who donated to this year's Giving Tree at City Hall. The generosity of the people of St. Charles is overwhelming. All of the gifts were donated through TriCity Family Services for a family in need. Donations of clothes, toys, food baskets, gift cards and even a snow board granted many Christmas wishes for the family. A strong sense of community is alive and well in St. Charles!



## Recycle Unwanted Holiday Lights & Electronics

Bring your old strings of lights and unwanted electronics to the St. Charles Electronics Recycling Container at the Public Works Facility, 1405 S. 7th Ave., Monday-Friday 8 a.m.–3 p.m. (excluding holidays), [630.377.4405](tel:630.377.4405) or [pw@stcharlesil.gov](mailto:pw@stcharlesil.gov). Or drop off at the Kane County Monthly Electronics & Book Recycling Collection Event held the second Saturday of each month, 8 a.m.–12 p.m. at 540 S. Randall Road, St. Charles, 630.208.3841 or visit [www.countyofkane.org/recycling](http://www.countyofkane.org/recycling).



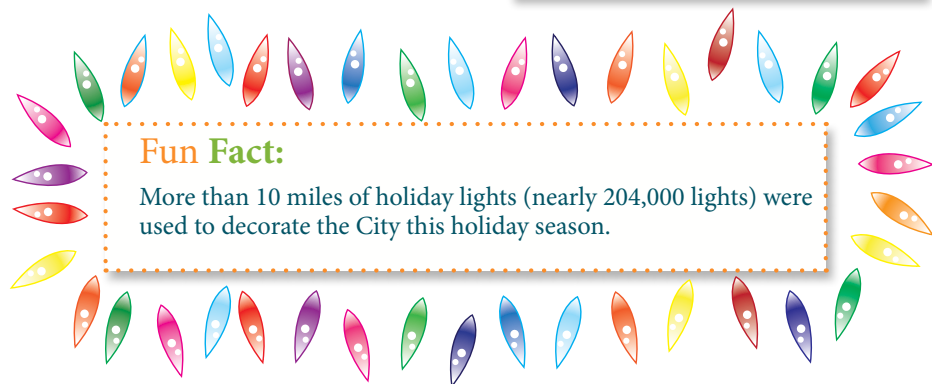
**Tip:** Leaves left in your yard make excellent mulch around your garden plants during the winter.

### Connect with Us

Connect with the city right from your mobile device. Download our St. Charles Connect app at [www.stcharlesil.gov/connect](http://www.stcharlesil.gov/connect)

## Utility Bills Have a New Payment Address

The City of St. Charles is moving to a lockbox system to process utility bill payments. The only change customers may notice is a different return mailing address on the utility bill. Beginning with bills mailed out in late December or early January, payments will be sent to a P.O. Box instead of the Municipal Building address. Utility billing staff will continue to handle all customer service calls and issues, just as before. In addition, you can continue to make payments online, at the utility billing counter or leave payments in any of the City's drop boxes. Please contact the Utility Billing office at [utilitybilling@stcharlesil.gov](mailto:utilitybilling@stcharlesil.gov) or [630-377-4426](tel:630.377.4426) for more information.



### Fun Fact:

More than 10 miles of holiday lights (nearly 204,000 lights) were used to decorate the City this holiday season.

### Subscribe

Encourage a friend to sign up for their own copy of **The Den** at [www.stcharlesil.gov](http://www.stcharlesil.gov) and click on [Subscribe to City eNews](#)

Offices are open Monday, January 19, 2015, Martin Luther King, Jr. Day, but there are no public meetings.

## City of St. Charles Directory

<i>Building &amp; Code Enforcement</i> .....	377.4406	<i>Fire Administration</i> .....	377.4458
<i>City Administrator Mark Koenen</i> .....	377.4422	<i>Fire Prevention Bureau</i> .....	377.4457
<i>Community Development</i> .....	377.4443	<i>Human Resources</i> .....	377.4446
<i>Development Engineering</i> .....	443.3677	<i>Mayor Raymond P. Rogina</i> .....	377.4444
<i>Economic Development</i> .....	443.4093	<i>Police Administration/Investigation/ Crime Prevention</i> .....	377.4435
<i>Electric Division</i> .....	377.4407	<i>Public Works: Water/Sewer/Street</i> .....	377.4405
<i>Engineering Division</i> .....	377.4486	<i>Refuse Pickup Information</i> .....	587.8282
<i>Emergency Management Agency</i> .....	377.4416	<i>TDD</i> .....	800.526.0844
<i>Flood Protection Assistance</i> .....	377.4486	<i>Utility Billing: Electric/Water/Sewer</i> .....	377.4426
<i>Finance/Accounting</i> .....	762.7002	<i>Electric Outage Hotline</i> .....	866.444.0016

**The Den** is produced by The City of St. Charles, 2 East Main Street, St. Charles, IL 60174  
Questions? Please contact Lisa Garhan, Editor at [lgarhan@stcharlesil.gov](mailto:lgarhan@stcharlesil.gov) 630.443.3744

Original illustrations by  
Danielle Piloto