

LEGEND

- CONCRETE SIDEWALK (4,043 S.F.)
- CONCRETE PAVEMENT (LIGHT) (25,690 S.F.)
- CONCRETE PAVEMENT (HEAVY) (6,850 S.F.)
- GREEN SPACE
- HEATED CONCRETE
- PROPOSED 18" MOUNTABLE CURB AND GUTTER
- PROPOSED 18" STANDARD CURB AND GUTTER
- PROPOSED 18" STANDARD SHEDDING CURB AND GUTTER
- PROPOSED 18" MOUNTABLE SHEDDING CURB AND GUTTER
- HANDICAPPED PARKING
- INDICATES NUMBER OF PARKING STALLS
- WALL PACK
- LIGHT POLE (1 LAMP)
- VACUUM ARM

NOTE:
ALL DIMENSIONS ARE TO THE FACE OF CURB, UNLESS NOTED OTHERWISE

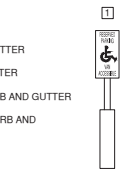
NOTE
ALL DISTURBED AREAS SHALL BE TOPSOILED TO A DEPTH OF 6 INCHES, SEEDED AND MULCHED. AREA TO BE RAKED FREE OF STONES AND CLUMPS.

PARKING DATA
TOTAL PARKING STALLS PROVIDED = 3
HANDICAP ACCESSIBLE PARKING STALLS = 1
TOTAL PARKING STALLS REQUIRED = X

SITE DATA
TOTAL AREA = 1.42 ACRES, 62,034 S.F.
BUILDING AREA = 0.10 ACRES, 4,617 S.F. (7.4%)
SIDEWALK/PARKING LOT AREA = 0.66 ACRES, 28,896 S.F. (46.5%)
GREEN SPACE = 0.66 ACRES, 28,521 S.F. (46.1%)

ZONING
BR-REGIONAL BUSINESS

PARCEL NO.
0130102042



THE PLANNING AND DESIGN OF THIS PROJECT WAS PROVIDED BY REL Robert E. Lee & Associates, Inc.

NO.	DATE	APPROV.	REVISION	NO.	DATE	APPROV.	REVISION

DRAWN
 CHECKED
 DESIGNED

4060 E MAIN STREET SITE IMPROVEMENT PLAN
 FOR CLUB CAR WASH
 CITY OF ST. CHARLES
 DUPAGE COUNTY, ILLINOIS

SITE PLAN

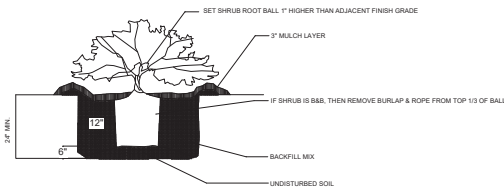
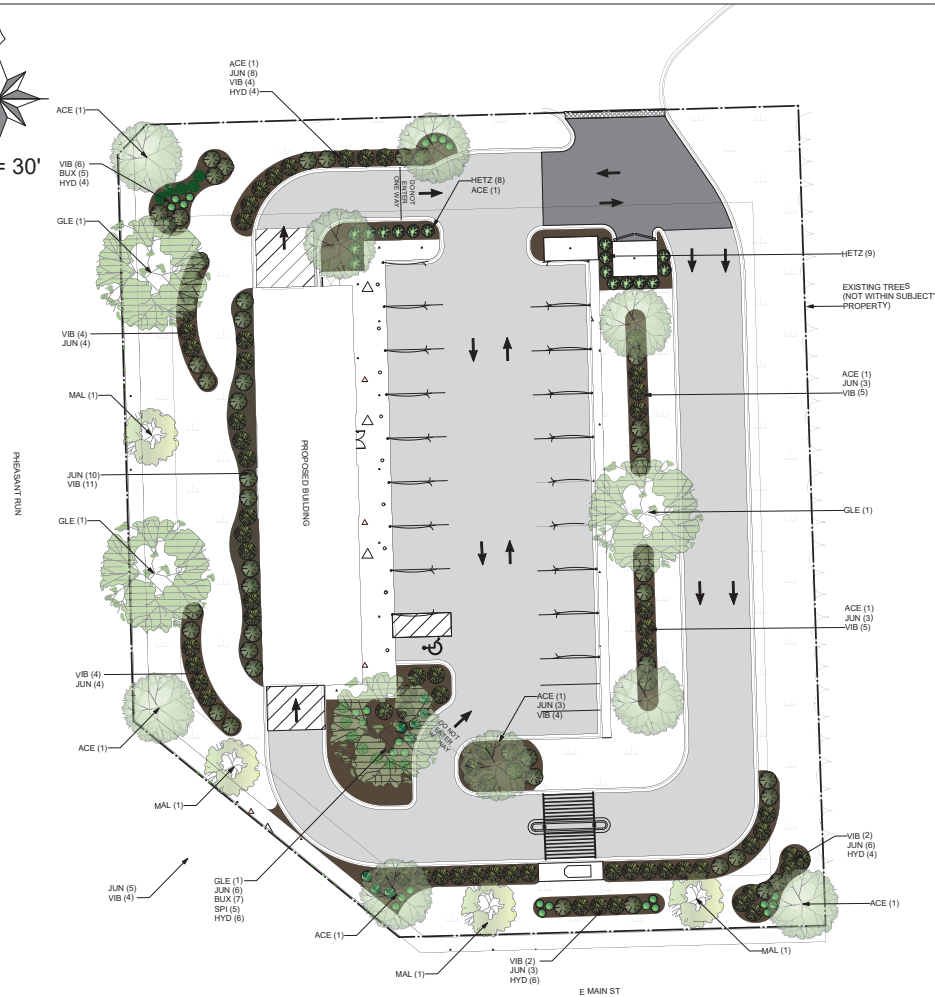
DATE
 FILE
 JOB NO.

1250 Centennial Centre Blvd | Hobart, WI | 920-662-9641 | releinc.com

SHEET NO.
 2



1" = 30'

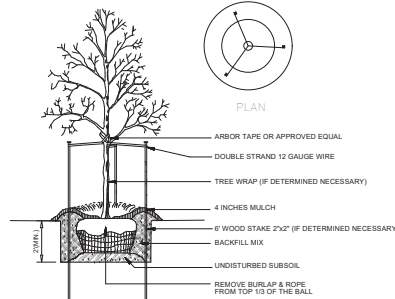


PRUNE ANY BROKEN BRANCHES AFTER PLANTING. DAMAGED SHRUBS OR BROKEN/CRUMBLING ROOT BALLS WILL BE REJECTED.

SHRUB PLANTING
N.T.S.

REVISION NOTES:

1. Plant abbreviations added to Planting Schedule.
2. Shrubs revised to be a minimum height of 24" at planting.
3. Trees revised to be a minimum of 2.5" cal. at planting.
4. Four (4) additional trees added to each parking lot island framing out parking lot.
5. In lieu of plantings along the north and east building facade, additional plantings provided along entirety of west building facade.
6. Suggested shade trees (3 total) have been provided along the west side of the stacking lane.
7. No existing trees along the east property line fall upon subject's property.
8. Proposed sidewalk along the southwest and west property lines has been added to drawing.



TREE PLANTING
N.T.S.

Planting Schedule					
	Qty	Common Name	Botanical Name	Scheduled Size	Plant ID
Conifers					
	17	Hetz Columnar Juniper	Juniperus chinensis 'Hetzii Columnaris'	6 BB	HETZ
Shrubs					
	8	Goldflame Spiraea	Spiraea x bumalda 'Goldflame' (S.x 'Goldflame')	#5 - 24"	SPI
	27	Little Lime® Hardy Hydrangea	Hydrangea paniculata 'Jane' USPP 22330	#5 - 24"	HYD
	68	Sea Green Juniper	Juniperus x fitzingeriana 'Sea Green'	#5 - 36"	JUN
	51	Summer Snowflake Viburnum	Viburnum plicatum f. tomentosum 'Summer Snowflake'	#5 - 24"	VIB
	12	Wintergreen Boxwood	Buxus microphylla 'Wintergreen'	#5 - 24"	BUX
Trees					
	4	Praying Pine Crabapple	Malus 'Praine Fire'	2.5" Cal.	MAL
	8	Red Maple, Swamp Maple	Acer rubrum	2.5" Cal.	ACE
	4	Skyline Honeylocust	Gleditsia triacanthos nemis 'Skyline'	2.5" Cal.	GLE

Landscape Installation Notes:

GENERAL:

- Landscape Contractor is responsible for coordinating work with general contractor to ensure the landscape scope of work doesn't interfere with existing or built conditions. They should note any discrepancies to the general contractor.
- Landscape Contractor is responsible for verifying the location of underground utilities by calling their local utility marking service.
- All plant material should be inspected by Landscape Contractor prior to installation to determine overall appearance and condition. Plant material that is damaged or has clear signs of stress should be rejected.
- Quantities of material shown on plan take precedence over the specification list or legend.
- If plant substitutions are required, Landscape Contractor is responsible for submitting recommendations to the client or client's representative.
- Irrigation system required and to be designed by qualified Irrigation Contractor - system must be programmable and capable of odd/even day use.
- This proposed landscape plan will mitigate/enhance site conditions in accordance to city requirements.
- All planting beds adjacent to turf grass shall be edged with vinyl or steel landscaping edging.
- Individual trees planting within turf grass shall have a 4' minimum diameter mulched tree ring.

PLANTING:

- When excavating for plant pits, any excess rock or building material should be removed and replaced with specified soil mix backfill.
- All plant tags should be removed from material by Landscape Contractor.
- All planting beds and trees should receive a minimum 3" deep layer of shredded hardwood mulch, unless otherwise noted.
- All backfill around plant material should be removed during planting.
- All wire baskets and stakes should be removed during planting.
- Cut and remove top half of burlap around rootballs and cut and remove any twine around trunk or root flare.
- All stakes and guy wires and tree wrap are to be removed no more than 1 year after installation.
- Tree wrap, if used, is to be installed by November 1 and to be removed by April 1.

City of St. Charles Design Standards:

Chapter 17.26 - Landscaping & Screening

17.26.080 - Foundation Planting: Not less than fifty percent (50%) of the total horizontal dimension of the building walls, excluding door openings, shall be landscaped. A minimum of 50% of walls that face a public street shall be landscaped.

Wall Length = 136' x 50% = 68 Ln. Ft. Landscape required
94 Ln. Ft. Landscape Provided

17.26.090 - Public Street Frontage Landscaping: One (1) shade, ornamental, or evergreen tree is required per fifty (50) linear feet of public street frontage. No less than seventy-five percent (75%) of the public street frontage shall be planted with a combination of shrubs, evergreen shrubs, and perennials.

Frontage = 470/50 = 9.4 Trees (10 Trees Required)
10 Trees Provided
75% of 470' = 352' 35'

17.26.100 - Parking Lot Landscaping: One (1) landscape island shall be required per ten (10) parking spaces. All rows of parking shall be terminated by a landscape island or other landscaped area. Parking areas shall be visually softened from the public street right of way.

No.	Date	By	Revision Notes
1	12/17/25	MVG	
2	3/23/26	MVG	

Project Address

Club Car Wash
4060 E Main Street
St. Charles, IL 60174



Design Firm	Elevate Outdoor LLC. 1112 Bryan Road O'Fallon, Missouri 63366
-------------	---

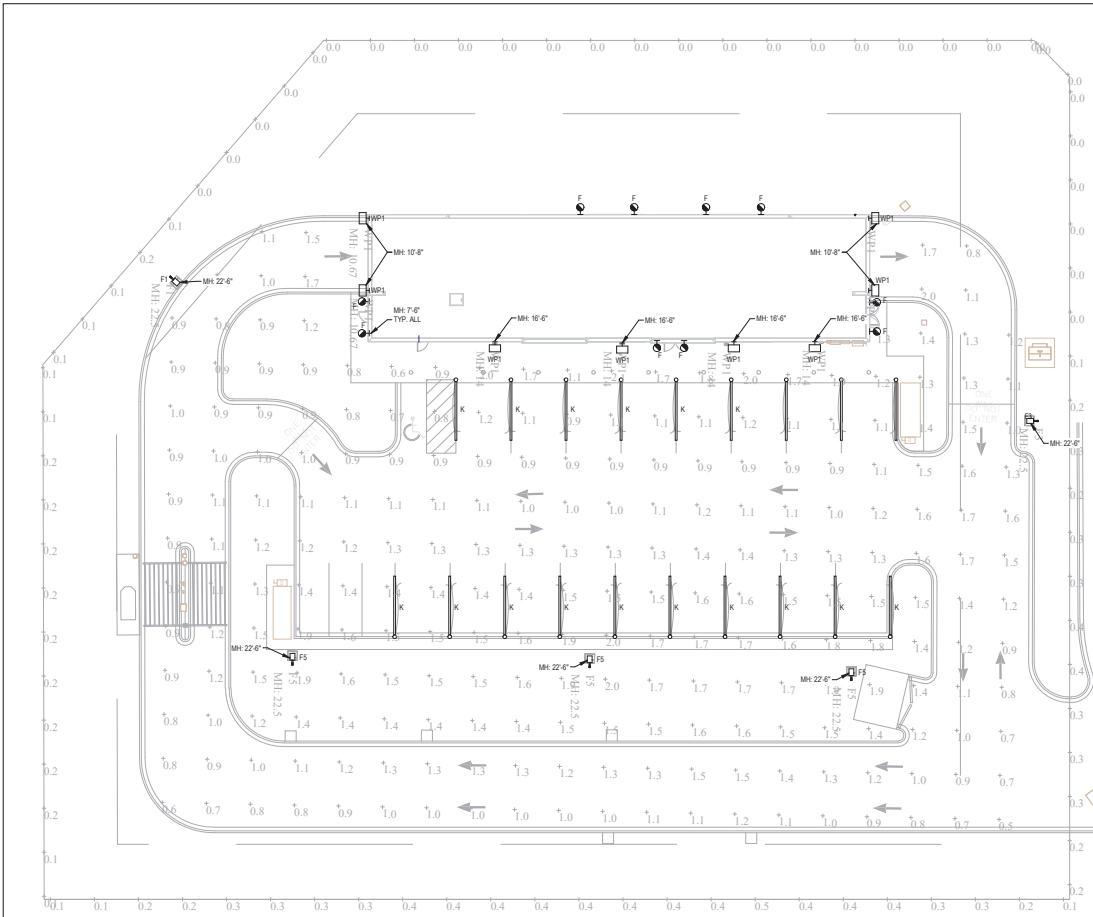
Consultant	Mark Gawriluk
------------	-------------------

Project Title	Club Car Wash St. Charles, Illinois
---------------	--

Sheet Title	Landscape Plan
-------------	----------------

Project Manager	Project ID
Drawn By	Scale
Reviewed By	Sheet No.
Date	

L-1
of
1



PHOTOMETRIC PLAN
1/8" = 1'-0"

SITE LIGHTING SCHEDULE										
MARK	MANUFACTURER	*MODEL NO.	TYPE	VOLTS	AMPS	WATTS	LUMENS	CCT (°K)	CRI	REMARKS
F	AFX	BYW506ALJ03K	SCIENCE DOWN LIGHT	120	0.12	10	600	4000	80	LED WALL
F1	MCGRAW EDISON	GALN-SAC70-0-U-TFT-4HS	POLE LIGHT	277	0.21	57	8123	4000	80	LED POLE WITH BLACK SSS POLE AND HOUSE SIDE SHIELDS
F3	MCGRAW EDISON	GALN-SAC70-0-U-THT-3HS	POLE LIGHT	277	0.21	57	8223	4000	80	LED POLE WITH BLACK SSS POLE AND HOUSE SIDE SHIELDS
F5	MCGRAW EDISON	GALN-SAC70-0-U-SWQ	POLE LIGHT	277	0.39	108	14797	4000	80	LED POLE WITH BLACK SSS POLE
K	G&G INDUSTRIAL	GPX8-SO	VACUUM ARCH LIGHT	120	0.3	36	4800	4000	80	LED POLE WITH SHROUD/SHIELD
MPT	LUMARK	XTOR-BW	WALL PACK	277	0.04	12.2	2193	4000	80	LED WALL

*OR EQUAL

GPX DRIVERLESS LUMINAIRE

Low-Profile, Driverless Linkable IP67 LED Linear Luminaire

Product Features
Minimum-Profile Driverless Design
Compact, Sleek, 1/2" High, 1/2" Wide, 1/2" Deep
Easy-to-Install Quick-Connect Cabling
Customized Color-Temperature Tuning
Superior Chemical & UV Resistance
Ordering Information

AFX

Driverless LED Positioning System

BYW Series

Performance Summary

Power & Connection Accessories

Lumark

XTOR-BW

CHROSTOR-LED

McGraw-Edison

3x6LN Gallon II

Area / Site Luminaire

Product Features

Product Certifications

Quick Facts

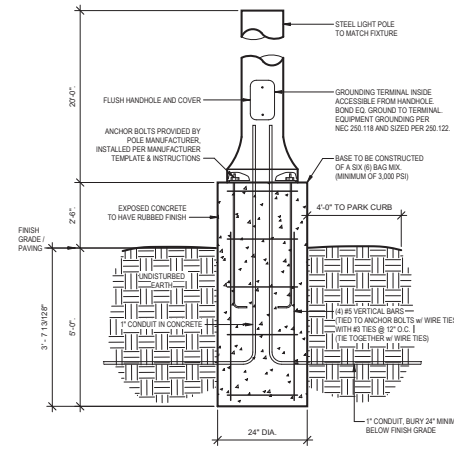
Material Package

COOPER

CONNECTION SYSTEMS

POLE FIXTURE PATENTS

PHOTOMETRIC PLAN



2 TYPICAL LIGHT POLE DETAIL (0-30R)
NOT TO SCALE

DRAWINGS ARE THE PROPERTY OF CUSTOMER. NO PART OF THIS DRAWING IS TO BE REPRODUCED OR USED IN ANY MANNER WITHOUT THE WRITTEN PERMISSION OF CUSTOMER.

DO NOT SCALE THIS DRAWING. SIZE SELECTION FROM DRAWING OCCUR.

ISSUE TITLE DATE
PERMIT SET 01-26-2025

NO.	DESCRIPTION	DATE

IN ANYTHING THIS SEAL, THE ENGINEER TAKES RESPONSIBILITY FOR THE WORK SHOWN ON THIS DRAWING ONLY AND MAKES NO GUARANTEE AND ALL RESPONSIBILITY FOR CORRECTING OR IMPROVING NOT BELONGING TO THIS SEAL.

PRELIMINARY NOT INTENDED FOR CONSTRUCTION

Timberlake ENGINEERING
A Custom Engineering Company

Sheila Frye, P.E. MARCH 26, 2025
62 071594
IL Certificate of Authority #184-004779

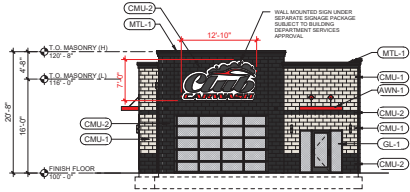
Timberlake ENGINEERING
A Custom Engineering Company
1115 S. Main Street
St. Charles, IL 60154
www.timberlakeeng.com
Illinois Certificate of Authority #184-004779

PROJECT: COL2016
DRAWN BY: NCC
DESIGNED BY: SLF

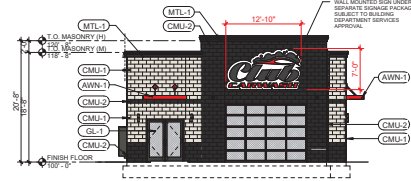
CLUB CAR WASH
4000 E MAIN STREET
ST. CHARLES, IL

SHEET TITLE
PHOTOMETRIC PLAN

SHEET NUMBER
MEP4



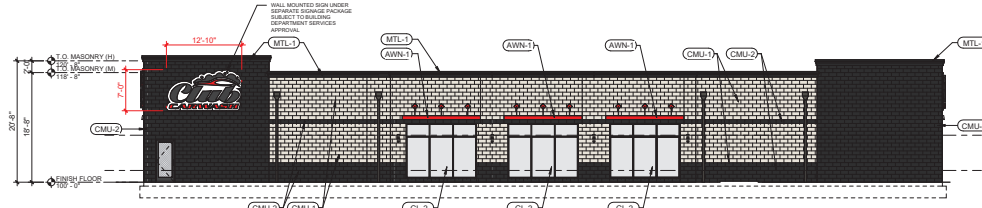
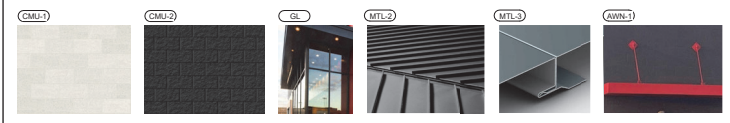
5 | ENTRANCE (SOUTH)
1" = 10'-0"



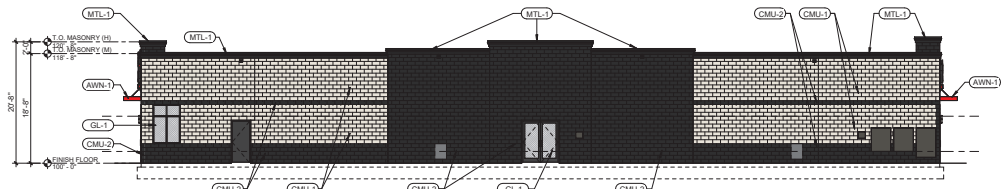
6 | EXIT (NORTH)
1" = 10'-0"

EXTERIOR MATERIALS LEGEND & REFERENCE MATERIAL PHOTOS

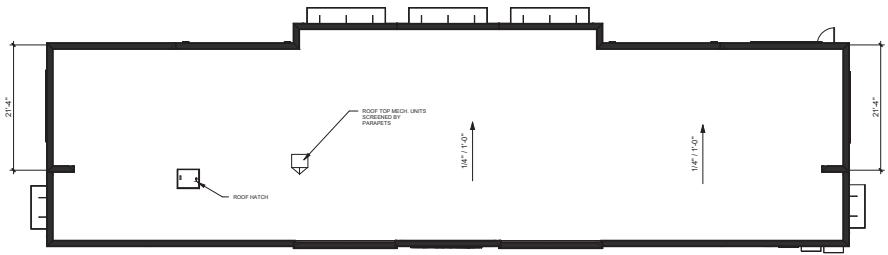
CMLU-1 ARCHITECTURAL 8" SPLIT FACE STANDARD BLOCK (8" x 8" x 16") COLOR: Paint SW7009 Peary White	GL-2 ALUMINUM STOREFRONT GLAZING SYSTEM Exterior Glazed System in Black Anodized Aluminum, w/ 1/4" LOW-E SPANDREL GLASS	MTL-1 KYNAR COATED METAL COPING COLOR: Matte Black
CMLU-2 ARCHITECTURAL 8" SPLIT FACE STANDARD BLOCK (8" x 8" x 16") COLOR: Integral, Best Block 'Slate'	AWN-1 PREFABRICATED FLAT METAL AWNING COLOR: Red	MTL-2 STANDING SEAM METAL ROOF COLOR: Matte Black
GL-1 ALUMINUM STOREFRONT GLAZING SYSTEM 2" x 4-1/2" Thermal Storefront Framing in Black Anodized Aluminum, w/ 1" Insulated LOW-E Tinted Glazing Unit	S/D3 PREFINISHED KYNAR SHEET METAL GLITTERY SCUPPERS/ DOWNSPOUTS COLOR: Matte Black	MTL-3 FLUSH LOCK METAL SOFFIT PANEL COLOR: Matte Black



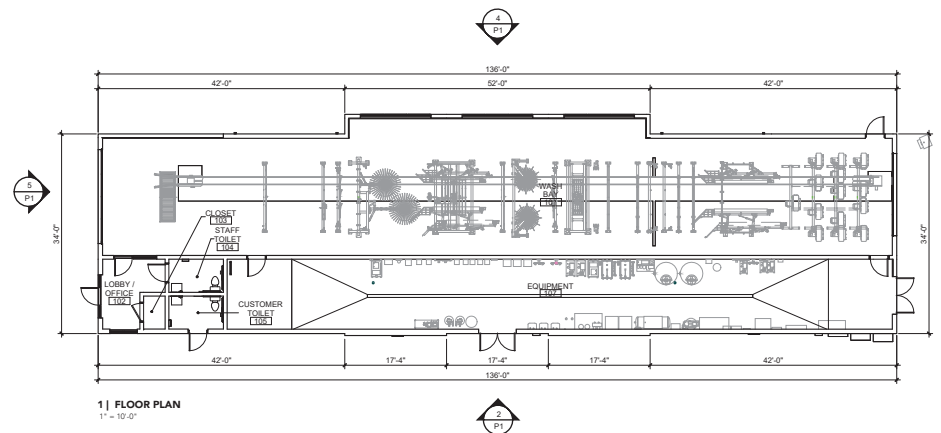
4 | WASH BAY (WEST)
1" = 10'-0"



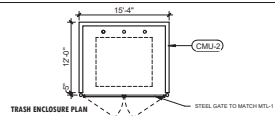
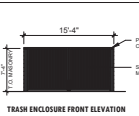
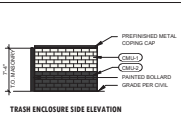
2 | EQUIPMENT (EAST)
1" = 10'-0"



3 | ROOF PLAN
1" = 10'-0"



1 | FLOOR PLAN
1" = 10'-0"



PROJECT NAME	CCW - ST. CHARLES, IL	PRELIMINARY SHEET
PROJECT NO.	20015.191	
DATE	03/27/26	As indicated
PROJECT ADDRESS	4060 E. MAIN ST. ST. CHARLES, IL 60174	 FINKLE + WILLIAMS ARCHITECTURE <small>PHOTO: WILLIAMS © 2025</small>