

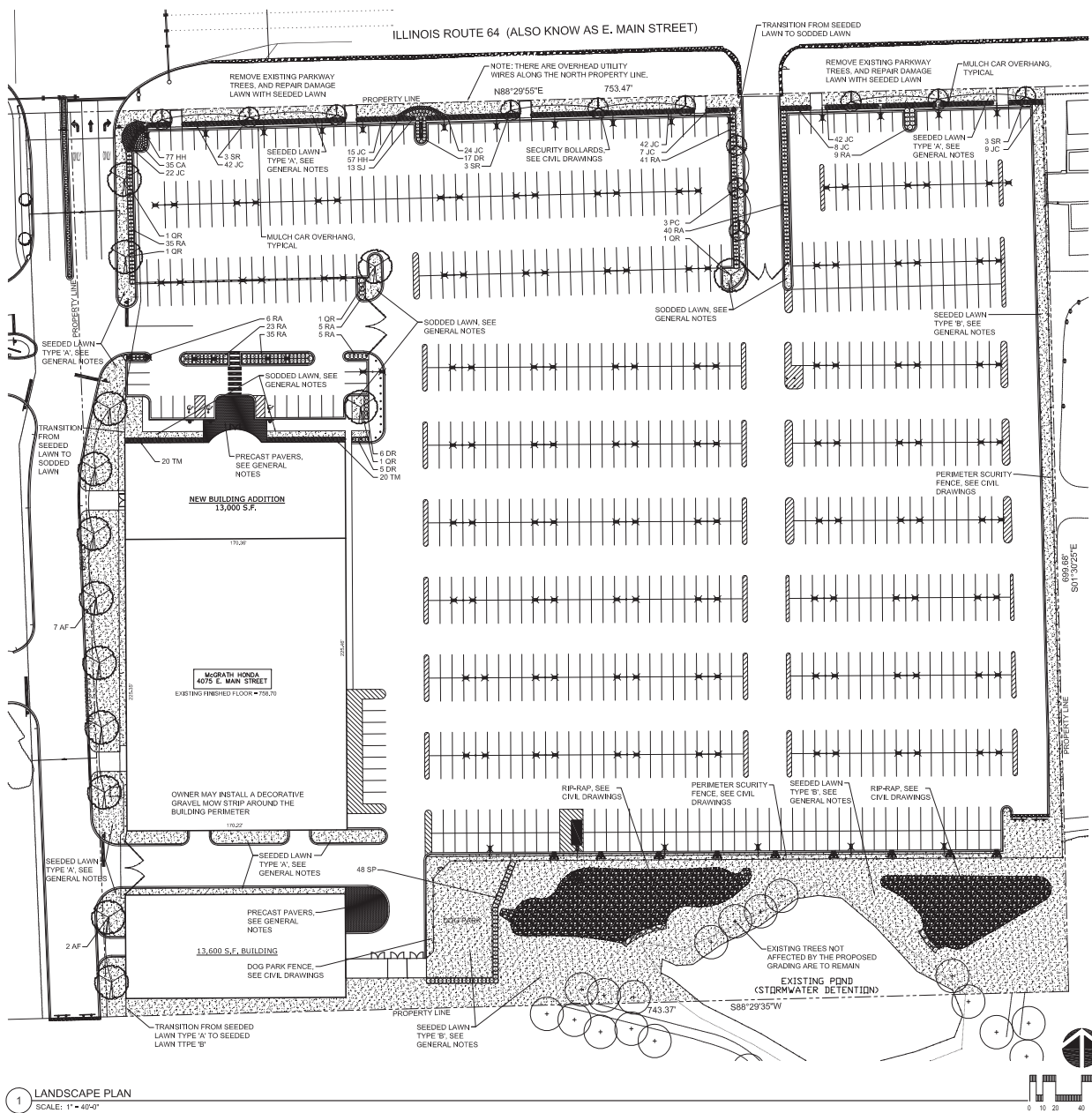
McGRATH HONDA DEALERSHIP
ST. CHARLES, ILLINOIS
PUD EXHIBIT

RWG Engineering, LLC
Civil Engineering & Site Data Consulting & Project Management
975 E. 22nd St. Suite 400
St. Charles, IL 60104
630.480.7889
www.rwg-engineering.com

PROJECT NO. 57304920
DATE 02/03/21
SCALE 1"=50'
PROJ. MGR. JWG
PROJ. ASSOC. MEX
DRAWN BY JWG

SHEET

1 OF 1



GENERAL NOTES

1. ALL DIMENSIONS AND SITE CONDITIONS ARE TO BE VERIFIED IN THE FIELD BY THE CONTRACTOR. NOTIFY THE LANDSCAPE ARCHITECT OF ANY DISCREPANCIES PRIOR TO STARTING WORK. SITE PLAN, ARCHITECTURE PLAN AND SITE SURVEY WERE PROVIDED BY OTHERS.
2. THE CONTRACTOR SHALL HAVE A MINIMUM OF FIVE YEARS EXPERIENCE WITH PROJECTS OF SIMILAR SIZE AND TYPE. CONTRACTOR SHALL BE RESPONSIBLE FOR OBTAINING ALL REQUIRED PERMITS.
3. SPECIES AND SIZES OF PLANTS LISTED IN THE PLANT LIST ARE SUBJECT TO AVAILABILITY AT TIME OF INSTALLATION. IF SUBSTITUTIONS ARE REQUIRED, THE CONTRACTOR SHALL SUBMIT REQUESTS TO THE LANDSCAPE ARCHITECT FOR APPROVAL.
4. ALL OVERHEAD AND UNDERGROUND UTILITIES ARE TO BE LOCATED PRIOR TO DIGGING OR EXCAVATION. IF UTILITIES OR OTHER OBSTRUCTIONS ARE DISCOVERED TO CONFLICT WITH GRADING, PLANT OR MATERIALS PLACEMENT, NOTIFY THE LANDSCAPE ARCHITECT SO THAT ADJUSTMENTS MAY BE MADE PRIOR TO PROCEEDING.
5. PROVIDE POSITIVE DRAINAGE AT ALL TIMES. DO NOT OBSTRUCT THE NATURAL OR ENGINEERED DRAINAGE FLOW PATTERN. NOTIFY THE LANDSCAPE ARCHITECT OF ANY DRAINAGE CONCERNS.
6. TOPSOIL DEPTH FOR ALL PLANT BEDS SHALL BE 18". TOPSOIL DEPTH FOR ALL SEEDED LAWN TYPE 'A' AREAS SHALL BE 9" DEPTH. TOPSOIL DEPTH FOR ALL SEEDED LAWN TYPE 'B' AREAS SHALL BE 6" DEPTH.
7. IMPORTED TOPSOIL FOR THIS PROJECT SHALL BE FRABLE LOAM OR SANDY LOAM, COMPRISED OF BETWEEN 20% AND 80% SILT, 10% AND 20% CLAY AND 30% AND 60% SAND. THE pH LEVEL SHALL BE BETWEEN 6.0 AND 7.2 AND THE ORGANIC MATTER CONTENT SHALL BE BETWEEN 3% AND 6%. TOPSOIL SHALL BE FREE OF SEEDS, STONES, LARGE CLUMPS, ROOTS, LEAVES AND DEBRIS. AND SHALL NOT BE DELIVERED WHILE IN A FROZEN OR MUDDY CONDITION. CONTRACTOR SHALL PROVIDE A RECENT SOIL TEST ANALYSIS FOR ALL SOIL TO BE USED. THE ANALYSIS MUST INCLUDE THE INFORMATION REQUIRED ABOVE. IF TESTED TOPSOIL REQUIRES AMENDMENTS TO COMPLY WITH REQUIREMENTS, CONTRACTOR SHALL AMEND THE TOPSOIL, RE-TEST AND RESUBMIT THE ANALYSIS FOR APPROVAL PRIOR TO BRINGING THE TOPSOIL ON SITE.
8. SOD SHALL BE A TALL FESCUE BLEND SOD, SUCH AS BLACK BEAUTY OR APPROVED EQUAL. BLUEGRASS BLEND SOD IS NOT ACCEPTABLE, UNLESS APPROVED BY THE LANDSCAPE ARCHITECT.
9. SEEDED LAWN TYPE 'A' SHALL BE IDOT CLASS 2E SALT TOLERANT ROADSIDE GRASS SEED MIXTURE. INSTALL SEED AT A RATE OF 300 LBS PER ACRE. SEEDING SHALL BE INSTALLED BETWEEN MAY 1 AND JUNE 15, OR AUGUST 15 TO OCTOBER 15.
10. SEEDED LAWN TYPE 'B' SHALL BE IDOT CLASS 1B LOW MAINTENANCE GRASS SEED MIXTURE. INSTALL SEED AT A RATE OF 200 LBS PER ACRE. SEEDING SHALL BE INSTALLED BETWEEN MAY 1 AND JUNE 15, OR AUGUST 15 TO OCTOBER 15.
11. ALL SEEDED LAWN AREAS ARE TO BE COVERED WITH EITHER AN EROSION CONTROL BLANKET, OR A HYDROMULCH WITH TACFIER.
12. ALL PLANT MATERIAL MUST BE SPECIMEN QUALITY, TRUE TO SPECIES AND VARIETY, WITH FULL, DENSE AND HEALTHY FORMS. PLANTS THAT ARE NOT SPECIMEN QUALITY WILL NOT BE ACCEPTED. ALL PLANTS MUST HAVE BEEN LOCALLY GROWN AT A STATE INSPECTED AND CERTIFIED NURSERY, LOCATED WITHIN 50 MILES OF THE PROJECT SITE.
13. ALL TREES SHALL BE INSPECTED BY THE LANDSCAPE ARCHITECT, AT THE NURSERY, PRIOR TO DIGGING. TREES THAT ARE ACCEPTABLE WILL BE SEALED. ALL SEALS APPLIED BY THE LANDSCAPE ARCHITECT MUST REMAIN ON THE TREES AND ARE NOT TO BE REMOVED BY THE CONTRACTOR. ALL TREES MUST HAVE SEALS IN PLACE AT THE TIME OF ACCEPTANCE OR WILL BE AUTOMATICALLY REJECTED. HEELD-IN TREES WILL NOT BE ACCEPTED WITHOUT PRIOR APPROVAL FROM THE LANDSCAPE ARCHITECT.
14. ALL SHRUBS MUST MEET THE MINIMUM SIZES GIVEN IN THE PLANT LIST AND BE SPECIMEN QUALITY. SHRUBS THAT DO NOT MEET THESE GUIDELINES WILL BE REJECTED.
15. PLANT MATERIAL SHALL ONLY BE INSTALLED WITHIN THE FOLLOWING DATES:
DECIDUOUS TREES AND SHRUBS: APR 1 THROUGH NOV 15
EVERGREEN SHRUBS: APR 1 THROUGH NOV 1
PERENNIALS: MAY 1 THROUGH OCT 15.
16. TEST TREE PITS AND PLANT BEDS FOR ADEQUATE DRAINAGE. FILL PLANT PIT WITH 12" OF WATER. IF WATER LEVEL DOES NOT DROP A MINIMUM OF ONE INCH PER HOUR, NOTIFY THE LANDSCAPE ARCHITECT OF DRAINAGE ISSUES.
17. PLANTING MIX FOR ALL PLANTINGS SHALL BE AS FOLLOWS. MIXING OF PLANTING MIX COMPONENTS SHALL BE THOROUGHLY BLENDED OUTSIDE THE PLANTING PITS, PRIOR TO PLANTING.
TREES AND SHRUBS: 80% TOPSOIL, 10% SAND, 10% PINE FINES
PERENNIALS: 70% TOPSOIL, 15% SAND, 15% PINE FINES
18. FOR PLANTING MIXES, SAND SHALL BE ANGULAR, COARSE SAND AND PINE FINES SHALL BE 3/8" SOUTHERN PINE BARK FINES.
19. EXCAVATE PARKING LOT ISLANDS AND CURBED PLANTERS TO A DEPTH OF 18" AND BACKFILL WITH TOPSOIL.
20. ALL PLANT BEDS ARE TO BE WELL SHAPED 'SPADE CUT' EDGES, 3" DEPTH, IN LINES OR IN CURVES AS SHOWN ON THE DRAWINGS.
21. PAVERS TO BE UNILOCK PROMENADE PAVERS SET IN A RUNNING BOND PATTERN. JOINTING SAND TO BE A POLYMERIC SAND. COLOR OF PAVERS AND SAND TO BE DETERMINED BY OWNER PRIOR TO INSTALLATION. USE BASE MATERIALS AS DIRECTED BY UNILOCK. INSTALL PAVERS PER UNILOCK'S RECOMMENDATIONS.
22. ALL PLANT MATERIAL, INCLUDING SEED OR SOD, SHALL BE MAINTAINED BY THE CONTRACTOR UNTIL 'ACCEPTANCE' IS GRANTED. MAINTENANCE SHALL INCLUDE WATERING, WEEDING, PRUNING, STRAIGHTENING, SPRAYING, MULCH REPLACEMENT AND MOWING.
23. THE CONTRACTOR SHALL REQUEST AN INSPECTION OF LANDSCAPE PLANTING UPON SUBSTANTIAL COMPLETION FOR 'ACCEPTANCE'. REQUEST MUST BE SUBMITTED TO LANDSCAPE ARCHITECT AT LEAST TEN DAYS PRIOR TO ANTICIPATED INSPECTION. UPON INSPECTION THE LANDSCAPE ARCHITECT SHALL PREPARE A PUNCH LIST OF UNACCEPTABLE OR OUTSTANDING ITEMS. AFTER THE ITEMS HAVE BEEN SATISFACTORILY COMPLETED AND REVIEWED, THE LANDSCAPE ARCHITECT WILL RECOMMEND 'ACCEPTANCE'. SOD AND SEED SHALL BE REVIEWED FOR ACCEPTANCE, ONLY AFTER THEY HAVE FULLY ROOTED AND HAVE BEEN MOWED AT LEAST TWICE.
24. ALL PLANT MATERIAL SHALL BE GUARANTEED FOR A PERIOD OF ONE YEAR FROM DATE OF 'ACCEPTANCE'. AT OR NEAR THE END OF THE GUARANTEE PERIOD, THE CONTRACTOR SHALL REQUEST AN INSPECTION OF LANDSCAPE PLANTING FOR 'FINAL ACCEPTANCE'. REQUEST MUST BE SUBMITTED TO LANDSCAPE ARCHITECT AT LEAST TEN DAYS PRIOR TO ANTICIPATED INSPECTION. UPON INSPECTION THE LANDSCAPE ARCHITECT SHALL PREPARE A PUNCH LIST OF UNACCEPTABLE ITEMS. AFTER THE ITEMS HAVE BEEN SATISFACTORILY REPAIRED, REVIEWED AND APPROVED, THE LANDSCAPE ARCHITECT WILL RECOMMEND 'FINAL ACCEPTANCE'.



DANIEL WEINBACH
&
PARTNERS, LTD.
Landscape Architects

53 W. Jackson Blvd.
Suite 250
Chicago, IL 60604
312 427-2888
www.dwpltd.com



William J. Ferguson

Revisions

8.	
7.	
6.	
5.	
4.	
3.	
2.	ISSUED FOR VILLAGE APPROVAL 01/15/21
1.	ISSUED FOR OWNER REVIEW 01/12/21

Project

McGRATH HONDA

ROUTE 64
ST. CHARLES, ILLINOIS

Sheet Title

LANDSCAPE
PLAN

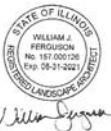
Date 01/12/21	Project No. DWP 21-102
Scale 1" = 40'-0"	Sheet No.
Drawn By FERGUSON	L-101
Approved	

1 LANDSCAPE PLAN
SCALE: 1" = 40'-0"



DANIEL WEINBACH
&
PARTNERS, LTD.
Landscape Architects

53 W. Jackson Blvd.
Suite 250
Chicago, IL 60604
312 427-2688
www.dapltd.com



Revisions

8.

7.

6.

5.

4.

3.

2. ISSUED FOR VILLAGE APPROVAL 01/15/21

1. ISSUED FOR OWNER REVIEW 01/12/21

Project

McGRATH
HONDA

ROUTE 64
ST. CHARLES, ILLINOIS

Sheet Title

LANDSCAPE
DETILS

Date 01/12/21 Project No. DWP 21-102

Scale NONE Sheet No.

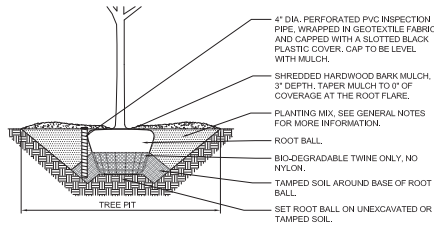
Drawn By FERGUSON L-102

Approved

PLANT LIST

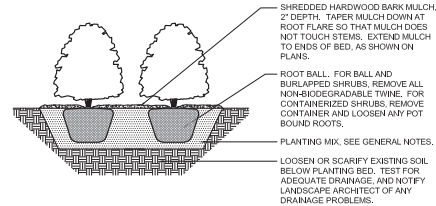
CODE	BOTANICAL NAME	COMMON NAME	SIZE	QTY	ADDITIONAL NOTES
DECIDUOUS TREES					
AP	ACER x FREEMANNII 'JEFFERSON'	AUTUMN BLAZE MAPLE	3" CALIPER	9	BRANCHED UP 6'
PC	PIRUS CALLERYANA 'CHANTICLEER'	CHANTICLEER PEAR	3" CALIPER	3	BRANCHED UP 6'
QR	QUERCUS x WAREI 'LONG'	REGAL PRINCE OAK	3" CALIPER	5	BRANCHED UP 6'
SR	SYRINGA RETICULATA 'IVORY SILK'	IVORY SILK JAPANESE TREE LILAC	3" CALIPER	9	BRANCHED UP 6'
DECIDUOUS SHRUBS					
DR	DIERVILLA RIVULARIS 'KODIAK RED'	KODIAK RED BUSH+HONEYSUCKLE	18" HT x 24" W	26	
RA	RHUS ARDAMATICA 'GRO-LOW'	GRO-LOW SUMAC	12" HT x 24" W	155	
SJ	SPIRAEA JAPONICA 'WALBUM'	MAGIC CARPET SPIREA	12" HT x 24" W	13	
SP	SYRINGA PATULA 'MISS KIM'	MISS KIM LILAC	30" HT x 30" W	48	
EVERGREEN SHRUBS					
JC	JUNIPERUS CHINENSIS 'SEA GREEN'	SEA GREEN JUNIPER	18" HT x 24" W	211	
TM	TAIUS x MEDIA 'TAUNTON'	TAUNTON DENSE YEW	18" HT x 24" W	40	
PERENNIALS AND ORNAMENTAL GRASSES					
CA	CALAMAGROSTIS ACUT. 'KARL FOERSTER'	FEATHER REED GRASS	1 GALLON	35	SPACED 24" O.C.
HR	HEMEROCALLIS 'HAPPY RETURNS'	HAPPY RETURNS DAYLILY	1 GALLON	134	SPACED 18" O.C.

LOCATE ALL UNDERGROUND UTILITIES PRIOR TO DIGGING. TREE PIT WIDTH TO BE THREE TIMES THE WIDTH OF THE ROOT BALL. TEST TREE PIT FOR DRAINAGE PRIOR TO INSTALLING TREE. PRUNE OFF ALL DEAD, BROKEN OR SCARRED BRANCHES. LOCATE ROOT FLARE IN ROOT BALL AND SET TREE HEIGHT SO THAT ROOT FLARE IS FLUSH WITH FINISH GRADE. WATER IN THE PLANTING MIX THOROUGHLY, WHILE KEEPING THE TREE PLUMB. STRAIGHTEN TREE IF SETTLING OCCURS.



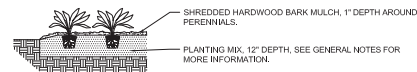
1 DECIDUOUS TREE PLANTING DETAIL
NOT TO SCALE

LOCATE ALL UNDERGROUND UTILITIES PRIOR TO PLANTING. SHRUBS BEDS ARE TO BE EXCAVATED AS A SINGLE SHRUB PIT. EXTEND SHRUB PIT WIDTH TO EDGES OF PLANT BED AS SHOWN ON THE LANDSCAPE PLAN. LOCATE ROOT FLARE IN ROOT BALL AND SET SHRUB HEIGHT SO THAT ROOT FLARE IS FLUSH WITH FINISH GRADE. REMOVE TWINE FROM ROOT FLARE. BACKFILL AND WATER IN THE PLANTING MIX THOROUGHLY, WHILE KEEPING THE SHRUB PLUMB. STRAIGHTEN SHRUB IF SETTLING OCCURS. PRUNE OFF ALL DEAD, BROKEN OR SCARRED BRANCHES, AND SHAPE PRUNE AS DIRECTED BY THE LANDSCAPE ARCHITECT. MULCH LIMITS FOR SHRUBS SHALL EXTEND TO ALL OUTER EDGES OF PLANTING BEDS. SEE LANDSCAPE PLAN FOR BED LAYOUTS.

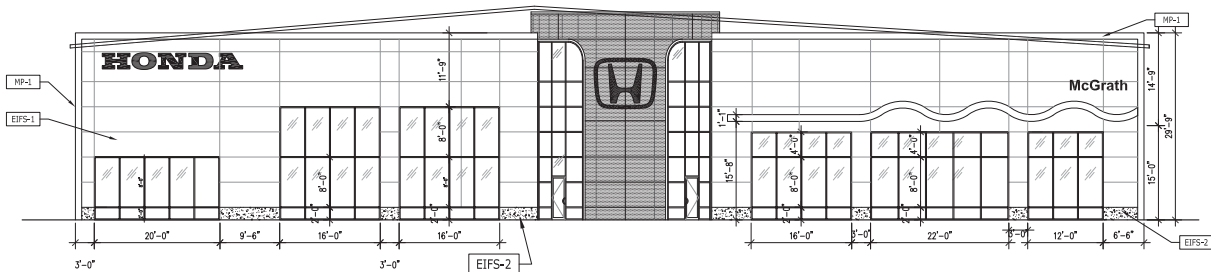


2 SHRUB PLANTING DETAIL
NOT TO SCALE

LOCATE ALL UNDERGROUND UTILITIES PRIOR TO DIGGING. EXCAVATE ENTIRE PERENNIAL / ORNAMENTAL GRASS BED, AND BACKFILL WITH PLANTING MIX AS SPECIFIED. BED HEIGHT IS TO BE 1" ABOVE FINISH GRADE AND WELL DRAINED. MULCH LIMITS FOR PERENNIAL BEDS TO EXTEND TO ALL EDGES OF THE BEDS. SEE PLANS FOR BED LAYOUTS. SEE PLANT LIST FOR PLANT SPACING. GAPS BETWEEN PLANTS SHALL BE NO GREATER THAN THE SPECIFIED SPACING FOR THAT PARTICULAR PLANT.

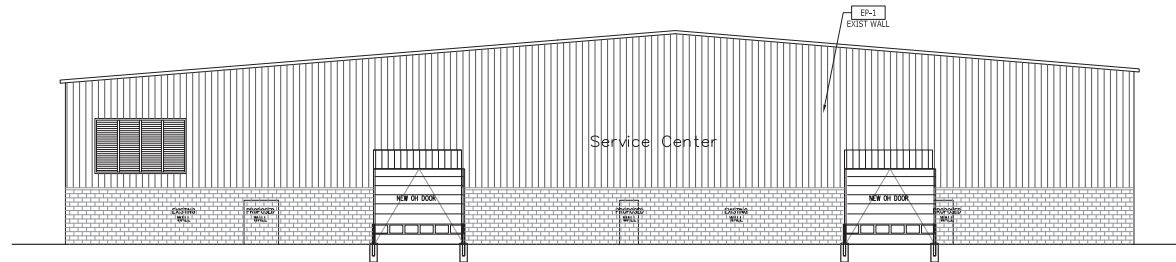


3 PERENNIAL AND ORNAMENTAL GRASS PLANTING DETAIL
NOT TO SCALE



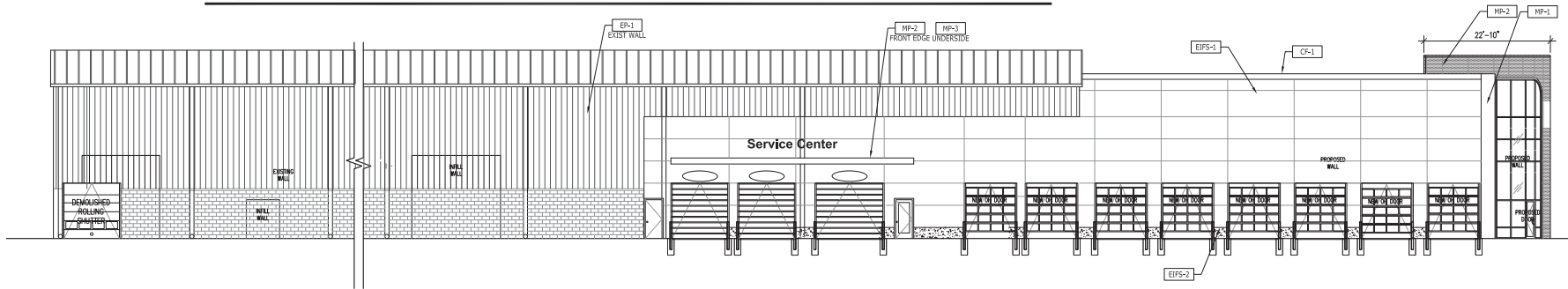
NORTH ELEVATION
SCALE: 1/8"

1



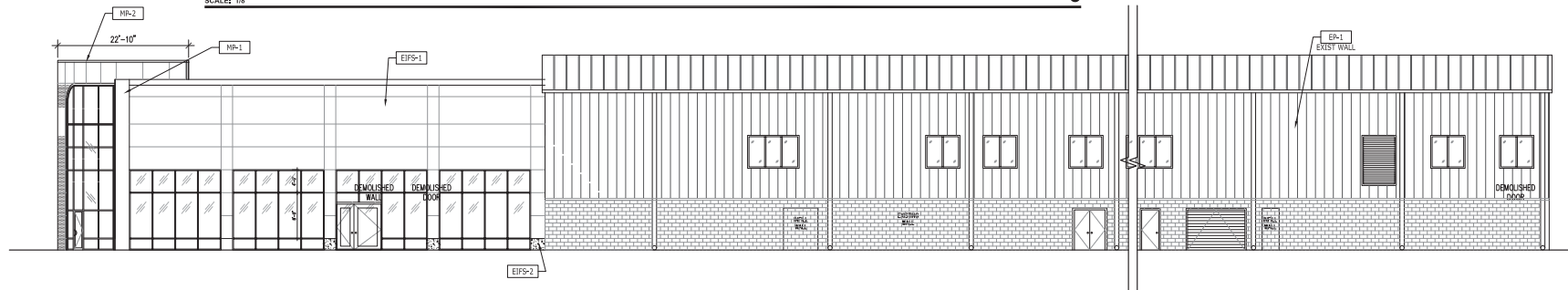
SOUTH ELEVATION
SCALE: 1/8"

2



EAST ELEVATION
SCALE: 1/8"

3



WEST ELEVATION
SCALE: 1/8"

4

DRAWING NOTES

- EXISTING EIFS REVEALS TO REMAIN, NEW EIFS REVEALS TO MATCH EXISTING.
- SIGNAGE CENTERED ABOVE OVERHEAD DOORS AND CENTERED BETWEEN TOP OF DOOR AND BOTTOM OF CANOPY.
- THE INTENT OF THE GUTTER SHROUD IS TO DISGUISE THE GUTTER, SEE DETAILS.
- SIGNAGE CENTERED ON WALL.
- WAVE CANOPY, SEE A04.02 FOR PROFILE DIMENSIONS.

PROJECT:



McGrath Honda, St. Charles
Pheasant Run Redevelopment
St. Charles, IL

GENERAL CONTRACTOR:

ARCHITECT:



500 Lake Cook Road, Suite 350
Deerfield, IL 60015
Tel: 847-671-1314
Attn: Simon Yu

CIVIL:

RWG Civil Engineering
975 E. 22nd Street, Suite 400
Wheaton, IL 60189
Tel: 630-450-7889
Direct: 630-774-9501
Attn: Robert Gudmundson

STRUCTURAL:

Virgilio & Associates, LTD
Structural Engineers
24069 North Echo Lake Road
Lake Zurich, IL 60047

Tel: 847-561-8411
Fax: 847-567-4334
www.vrta.com

Attn: Paul Virgilio

MECH / PLUMB / ELEC ENGINEER:

ALPHA COMM. ENG.
1363 Shermer Road
Northbrook, IL 60062

Tel: 224-353-4000
Attn: Ryan Abummar

PROFESSIONAL SEAL:

1 / 15 / 2021 - ISSUED FOR PERMIT

EXTERIOR ELEVATIONS

A4.01

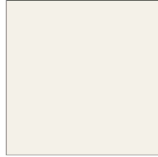
©2021 SIMON ARCH, LLC



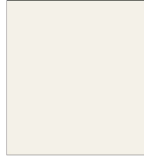
MP-1 Metal Panel,
Exterior Facade, Accent
CF-1 Cap Flash,
General



MP-2 Metal Panel,
Eaves of Canopies,
Entrance Cylinder



MP-3 Metal Panel,
Exterior Facade Main Field Option,
Underside of Canopies



EP-1 Exterior Paint,
Exterior Metal Doors
EP-2 Exterior Paint,
Paint for Existing Stucco



EPFS-1 Exterior Insulation Finishing System,
To Match MP-1 Main Field



CMU-1 Concrete Masonry Unit,
Exterior Facade, Main Field
(Split Face Finish)

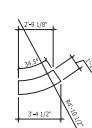


SF-1 Store Front,
Exterior Facade

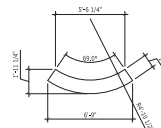


CC-1 Concrete,
Entry Walkway

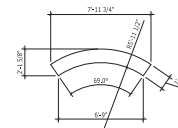
CODE	MATERIAL	MANUFACTURER	DESCRIPTION			LOCATION	ADDITIONAL INFORMATION
			PRODUCT	COLOR	DIMENSION		
CO-1	CONCRETE	PROVIDED BY ARCHITECT OF RECORD		NON-COLORED PLAIN GREY FROM LOCAL BATCH PLANT BROOM FINISH	4"x4" SCORE MARKS	ENTRY WALKWAY, FEATURE VEHICLE PADS	
CF-1	CAP FLASH	PROVIDED BY ARCHITECT OF RECORD		TO MATCH MP-1	4" HEIGHT		CONTACT: DAVID J. KEARNEY AT ALPOLUC (757) 286-1005 CONTACT: KEVIN JUDESMAN AT ALCOA ARCHITECTURAL PRODUCTS (478) 31940139
CMU-1	CONCRETE MASONRY UNIT	ANCHOR CONCRETE PRODUCTS (OLDCASTLE ARCHITECTURAL BRAND)	ANCHOR SPLIT FACE BLOCK	SD-3X NOTE: USE WITH LEHIGH MASONRY CEMENT. COLOR SD-33		EXTERIOR FACADE MAIN FIELD	CONTACT: STEVEN EASTER AT ANCHOR CONCRETE PRODUCTS, INC. (800) 415-8445 OR NOTE: FOR PRODUCT SUBSTITUTION REFER TO OLDCASTLE ARCHITECTURAL PRODUCTS. NOTE: REFER TO MANUFACTURERS SALES REPRESENTATIVE FOR APPROPRIATE PRODUCTS. INSTALLATION RECOMMENDATIONS AND PRODUCT SUBSTITUTIONS BASED ON REGION.
D-1	GLASS & ALUMINUM	KAWNEER OR EQUAL	3075 OR 5070 STANDARD NARROW STYLE CENTER HUNG DOOR	MEDIUM STYLE CLEAR ANODIZED FINISH GLASS & ALUMINUM		SHOWROOM EXTERIOR DOORS GENERAL	CONTACT: EVAN RUSS AT KAWNEER COMPANY, INC. (440) 448-6900
D-2	SOLID MAIN DOOR	PROVIDED BY ARCHITECT OF RECORD	3070 INTEGRAL VISION PANEL	PAINT: GLODEN PROFESSIONAL #507Y E3029 NATURAL WHITE - SEE EP-1		EXTERIOR BOH	
D-3	ALUMINUM OVERHEAD DOOR (GLASS)	PROVIDED BY ARCHITECT OF RECORD		METAL COLOR TO MATCH SF-1. CLEAR ANODIZED		SERVICE RECEPTION, EXPRESS SERVICE & WASH	
D-4	ALUMINUM OVERHEAD DOOR (PAINTED METAL)	PROVIDED BY ARCHITECT OF RECORD PROVIDE SINGLE BAND OF GLASS	PROVIDE SINGLE BAND OF GLASS	PAINT: GLODEN PROFESSIONAL #507Y E3029 NATURAL WHITE - SEE EP-1	SEE DRAWING FOR SIZE	SERVICE BAYS	
EPFS-1	EXTERIOR INSULATION FINISHING SYSTEM	DRYVIT	DRYVIT SYSTEM, INC. OUTSULATION PLUS MD EPFS	COLOR: HONDA CHINA WHITE # HOND061021 FINISH: SANDBLAST		MAIN FIELD	CONTACT: BOB DAZEL AT DRYVIT (734) 276-0404
EPFS-2	EXTERIOR INSULATION FINISHING SYSTEM WITH HIGH IMPACT	DRYVIT	DRYVIT SYSTEM, INC. OUTSULATION PLUS MD EPFS W/ HIGH IMPACT	COLOR: OYSTER SHELL # 408 FINISH: WEATHERLASTIC GUARDPUTZ		LOWER PORTION OF EPFS AREA	CONTACT: BOB DAZEL AT DRYVIT (734) 276-0404
EP-1	EXTERIOR PAINT	BENJAMIN MOORE	PRIMER: SUPER SPEC HP UNIVERSAL ALKYD METAL PRIMER #107 PAINT: AURA WATERBORNE EXTERIOR PAINT: SEMI-GLOSS FINISH #632	CLASSIC COLORS 1B ALABASTER #676		EXTERIOR METAL DOORS	CONTACT: DOROTHY HAZINSKI AT BENJAMIN MOORE (330) 353-3655; DOROTHY.HAZINSKI@BENJAMINMOORE.COM
EP-2	EXTERIOR PAINT	BENJAMIN MOORE	PRIMER: SURE SEAL LATEX PRIMER SEALER #027 PAINT: AURA WATERBORNE EXTERIOR PAINT: SATIN FINISH #632	CLASSIC COLORS 1B ALABASTER		PAINT OVER EXISTING STUCCO	CONTACT: DOROTHY HAZINSKI AT BENJAMIN MOORE (330) 353-3655; DOROTHY.HAZINSKI@BENJAMINMOORE.COM
MP-1	METAL PANEL OPTION 1	ALPOLUC	DRY JOINT SYSTEM	HONDA SILVER METALLIC 4MM PIN BSK		EXTERIOR FACADE ACCENT	CONTACT: DAVID J. KEARNEY AT ALPOLUC (757) 286-1005
	METAL PANEL OPTION 2	ALCOA ARCHITECTURAL PRODUCTS REYNOLBOND	DRY JOINT SYSTEM	RB1610PE - BRIGHT SILVER METALLIC OIL RB1610PE - BRIGHT SILVER METALLIC "ECO-CLEAN"			CONTACT: KEVIN JUDESMAN AT ALCOA ARCHITECTURAL PRODUCTS (478) 31940139
MP-2	METAL PANEL OPTION 1	ALPOLUC	DRY JOINT SYSTEM	HONDA BLUE 4MM PIN BSK		EDGES OF CANOPES, ENTRANCE CYLINDER	CONTACT: DAVID J. KEARNEY AT ALPOLUC (757) 286-1005
	METAL PANEL OPTION 2	ALCOA ARCHITECTURAL PRODUCTS REYNOLBOND	DRY JOINT SYSTEM	RB1610PE - HONDA BLUE OIL RB1610PE - HONDA BLUE "ECO-CLEAN"			CONTACT: KEVIN JUDESMAN AT ALCOA ARCHITECTURAL PRODUCTS (478) 31940139
MP-3	METAL PANEL OPTION 1	ALPOLUC	DRY JOINT SYSTEM	HONDA WHITE 4MM PIN BENT		EXTERIOR FACADE MAIN FIELD OPTION, UNDERSIDE OF CANOPES	CONTACT: DAVID J. KEARNEY AT ALPOLUC (757) 286-1005
	METAL PANEL OPTION 2	ALCOA ARCHITECTURAL PRODUCTS REYNOLBOND	DRY JOINT SYSTEM	RB1610PE - BONE WHITE OIL RB1610PE - BONE WHITE "ECO-CLEAN"			CONTACT: KEVIN JUDESMAN AT ALCOA ARCHITECTURAL PRODUCTS (478) 31940139
SF-1	STORE FRONT	KAWNEER OR EQUAL	PROVIDED BY ARCHITECT OF RECORD	CLEAR ANODIZED FINISH		EXTERIOR FACADE	CONTACT: EVAN RUSS AT KAWNEER COMPANY, INC. (440) 448-6900



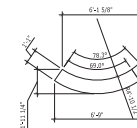
D
TYPICAL STARTING SEGMENT



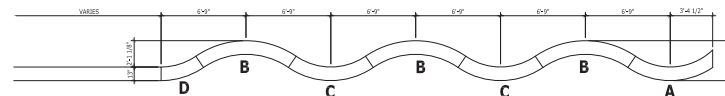
C
TYPICAL MID SEGMENT - INVERTED



B
TYPICAL MID SEGMENT



A
TYPICAL END SEGMENT



PROJECT:



McGrath Honda, St. Charles
Pheasant Run Redevelopment
St. Charles, IL

GENERAL CONTRACTOR:

ARCHITECT:



500 Lake Cook Road, Suite 350
Deerfield, IL 60015
Tel: 847-627-1314
Attn: Simon Yu

CIVIL:

RWG Civil Engineering
975 E. 22nd Street, Suite 400
Wheaton, IL 60189

Tel: 630-460-7889
Direct: 630-774-3901
Attn: Robert Gudmundson

STRUCTURAL:

Virgilio & Associates, LTD
Structural Engineers
24069 North Echo Lake Road
Lake Zurich, IL 60047

Tel: 847-561-0411
Fax: 847-567-4034
www.virgilioassoc.com

Attn: Paul Virgilio

MECH / PLUMB / ELEC
ENGINEER:

ALPHA COMM. ENG.
1363 Shermer Road
Northbrook, IL 60062

Tel: 224-353-6900
Attn: Raguin Abummar

PROFESSIONAL SEAL:

1 / 15 / 2021 - ISSUED FOR PERMIT

MATERIALS

A4.02

©2021 SIMON ARCH, LLC



8'ft x 8ft sign area
x 15ft tall



8'ft x 8ft sign area
x 15ft tall

