

Illinois Municipal Electric Agency (IMEA) Power Sales Contract



CITY OF
ST. CHARLES
ILLINOIS • 1834

IMEA Power Sales Contract

04/01/2024 Government Services Meeting

Agenda

- 1 Introduction
- 2 St. Charles Electric Utility
- 3 Illinois Municipal Electric Agency (IMEA)
- 4 Tentative Schedule



CITY OF
ST. CHARLES
ILLINOIS • 1834

Introduction

- **St. Charles Municipal Electric Utility**
 - Acceptance of Power in from 9 ComEd Transmission Feeds
 - Distribution of Power to All Customers
 - Maintenance of all Electric Infrastructure
 - Response to Power Outages (Keep the lights on)
- **Illinois Municipal Electric Agency (IMEA)**
 - St. Charles has an Existing Power Sales Contract with IMEA since 2004
 - Existing IMEA Power Sales Contract Expires on Sept. 31, 2035
 - IMEA is Offering a New Power Sales Contract from Oct. 1, 2035 – May 31, 2055
 - Contract Offer Expires on May 31, 2025 (In 14 month's)



St. Charles Electric Utility



- St. Charles Electric Utility was Established in 1892 (132 Years ago) – “City Lights”
- 132 Years Later.....
 - Over 15,500 Customers
 - 130 megawatts of Peak Power
 - 9 City Sub-Stations Transform 34,500 Volts to 12,470 Volts
 - 24/7 Operation
- 35 Dedicated Staff (IBEW & Teamsters)
 - Manager’s Paul Hopkins & Giovanni McLean
 - 15 Lineworkers/ 2 Locators
 - Fiber Telecommunication Technicians
 - Transmission, Distribution & SubStation Engineering Staff
 - Administrative & Meter Readers



CITY OF
ST. CHARLES
ILLINOIS • 1834

St. Charles Electric Utility



• Key Responsibilities

- Power Purchase – IMEA Board Member
- Coordination w/ ComEd Transmission
- Electrical Sub-Station Design & Maintenance
- Distribution System (Over-Head & Underground) Design & Maintenance
- Code Compliance & Safety
- Electric and Water Meter Installations and Maintenance
- Meter Reading
- Telecommunications/ Fiber Network Installation, Operations & Maintenance
- Administrative – Budgeting, Purchasing, Rate Design & 24/7 Customer Service
- New Development/ Construction Coordination



CITY OF
ST. CHARLES
ILLINOIS • 1834

St. Charles Electric Utility



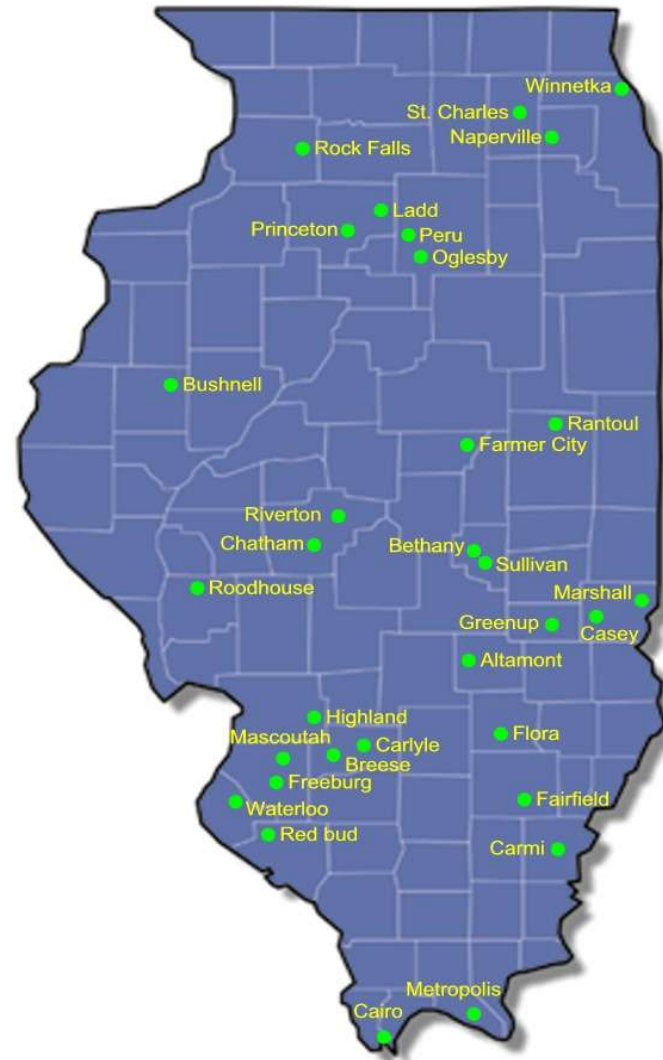
- We Keep the Light's On.....

- Emergency Management/ Power Outages
- C.A.I.D.I Statistics (Average Length of Outage)
 - St. Charles Electric Utility – 16.5 minutes
 - ComEd Utility – 104 minutes
- Emergency Management/ Power Outages
 - Mutual Aid Assistance
- Automation & State-of-Art Technology & Equipment
- High Design & Construction Standards
- Dedicated & Local Staff



CITY OF
ST. CHARLES
ILLINOIS • 1834

Illinois Municipal Electric Agency (IMEA)



CITY OF
ST. CHARLES
ILLINOIS • 1834

Illinois Municipal Electric Agency (IMEA)

- Founded in 1984 by Municipal Utilities to serve the needs of Communities
- Capacity & Energy is purchased in a Reliable, Predictable and Competitive manner. IMEA secures long-term Capacity & Energy to supply members power needs & spot buying on the open energy market as needed
- IMEA combines the power needs of 32 Municipal Electric Utilities and works for the greater good of all Member Communities as a Nonprofit Joint Action Agency
- Formed & Run by its Members (Local Control)
- IMEA is a 24/7 operation located in Springfield, IL with 32 employees, three separate entities and \$1.3 billion in assets

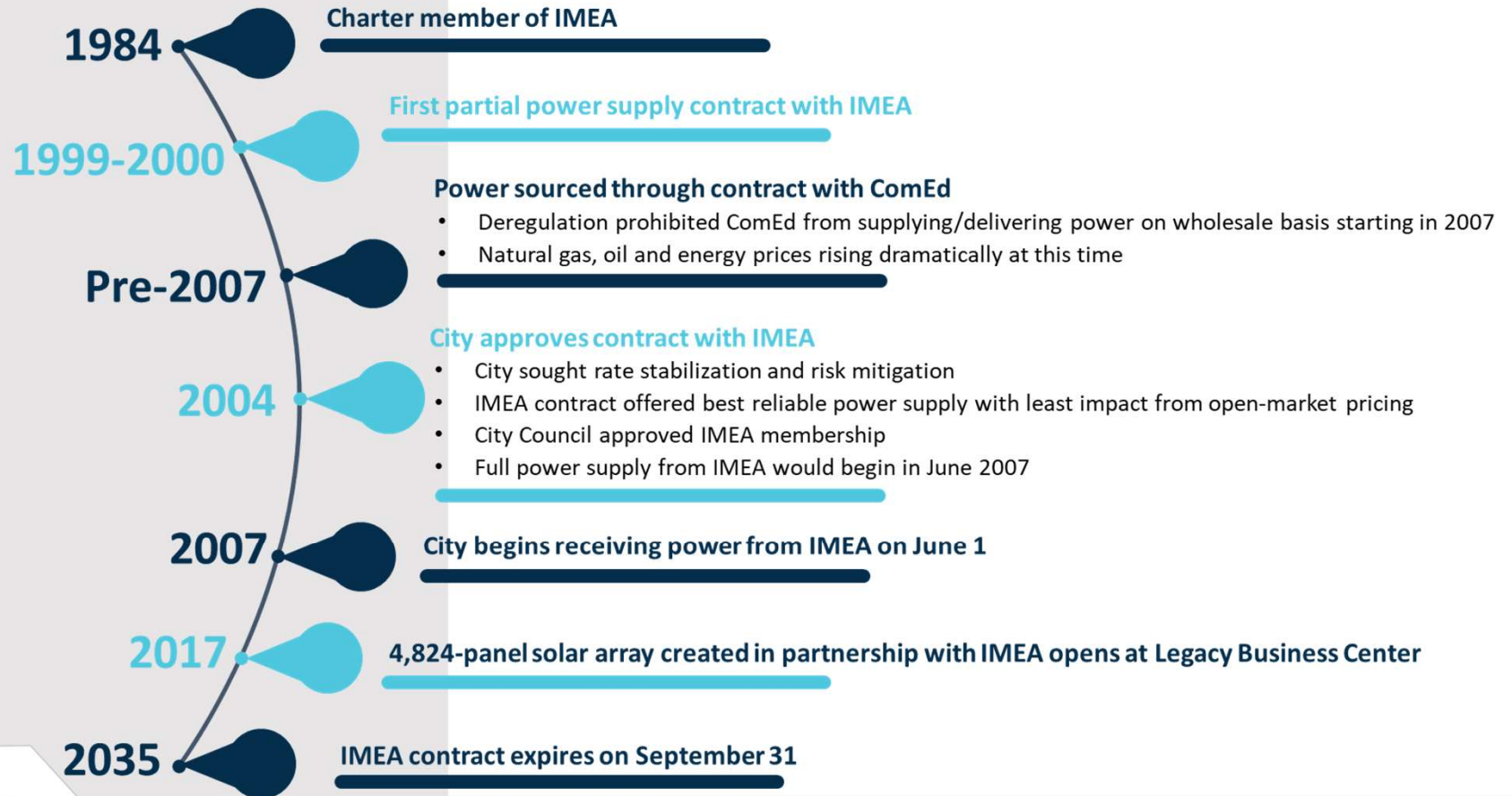
Illinois Municipal Electric Agency (IMEA)

Your IMEA contract provides many services, at no additional cost, as part of your agreement. We are committed to not only providing reliable and affordable electricity for our members, but also many rate-savings items and value-added services. These are services you won't receive with other providers which would cost your community more money down the road.

SAVINGS & SERVICES	STANDARD IMEA	STANDARD PRODUCT POWER MARKETER
Energy efficiency funding to lower member bills	✓	✗
Identified renewable energy options as part of the power supply	✓	✗
Electric vehicle charging infrastructure funding	✓	✗
Affordable and stable pricing for over 10 years	✓	✗
Economic development incentive rates to create jobs	✓	✗
Ability to purchase REC's to meet environmental goals	✓	✗
Legal / regulatory assistance from industry experts	✓	✗
24-hour member systems support for outages and emergencies	✓	✗
Economic development assistance to benefit local economy	✓	✗
Customer retail rate comparisons to prove competitive position	✓	✗
Business customer walk-through energy audits to lower bills	✓	✗
Local representation on the IMEA board of directors	✓	✗
Monitor and advocate before state / federal regulatory agencies	✓	✗
Negotiate and provide due diligence to lower transmission costs	✓	✗



IMEA & St. Charles - History



IMEA & St. Charles Electric Utility

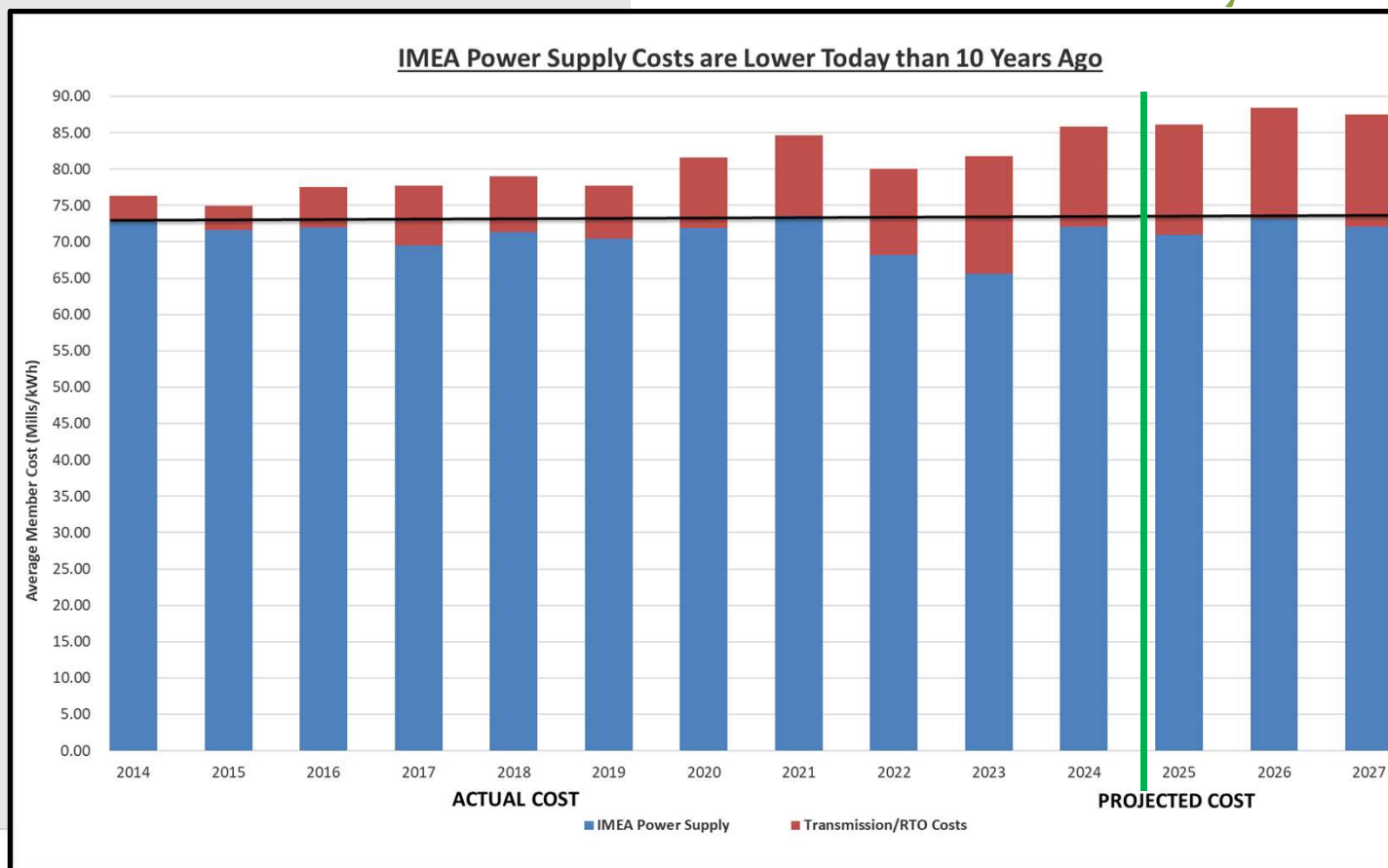


Affordability.
Reliability.
Sustainability.



CITY OF
ST. CHARLES
ILLINOIS • 1834

IMEA & St. Charles Electric Utility - Affordability



IMEA rates to St. Charles remain flat over the previous 10-year period, and are projected to continue to remain flat, thanks to agency-owned resources and long-term contracts



IMEA & STC Electric – Reliability & Sustainability

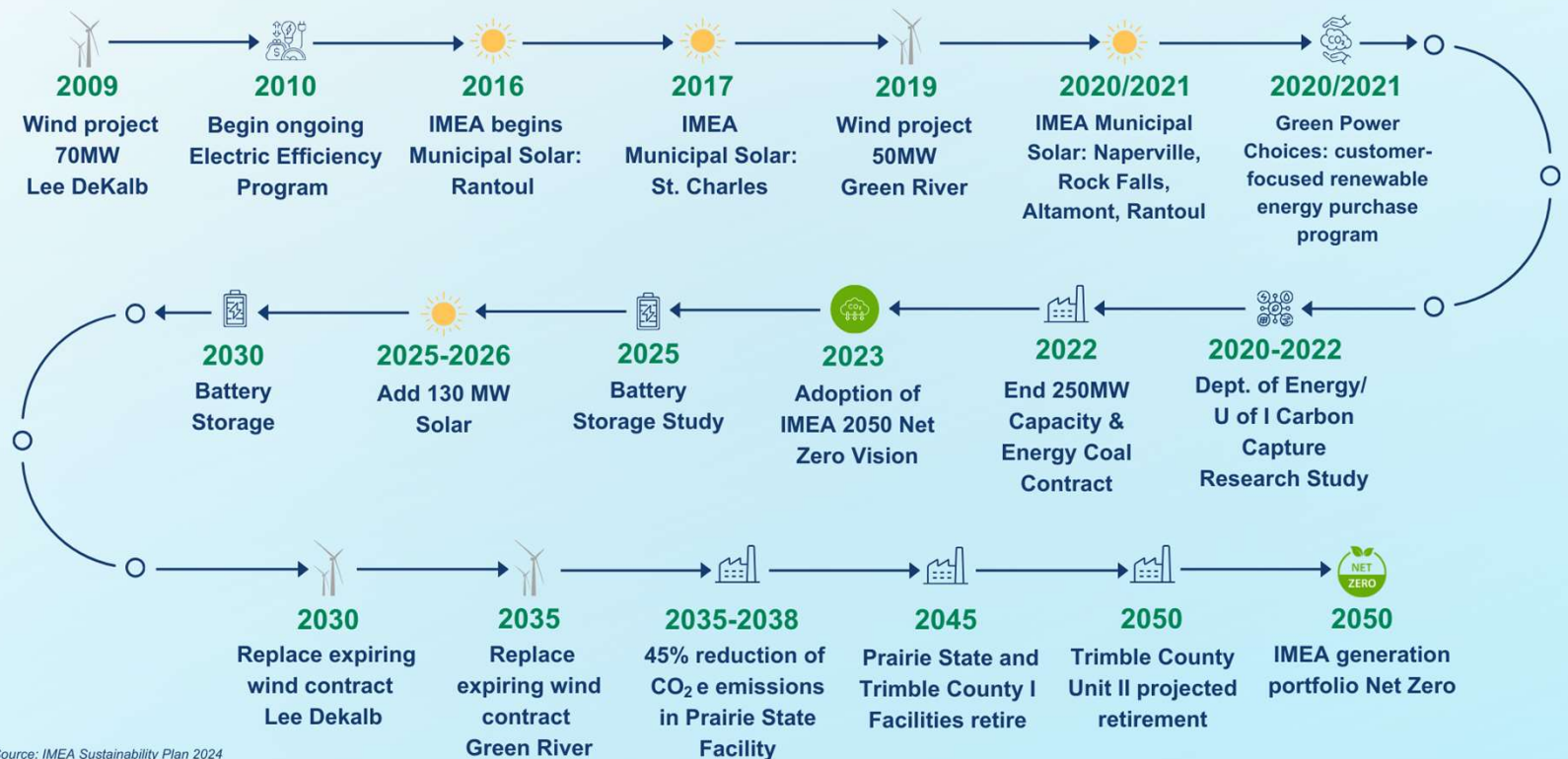
Diverse Portfolio to Protect Against Market Volatility

- Solar: Large & Small Scale
 - Big River Solar Farm (25 MW on-line next year)
 - 6 solar systems in member communities, including 500 kW array in St. Charles
- Wind: 2 Major Wind Projects
 - Green River Wind Farm & Lee DeKalb Wind Energy Center (120 MW)
- Coal:
 - Prairie State Generating Company – 15.17% IMEA Ownership (246 MW)
 - Trimble County – 12.12% IMEA Ownership (153 MW)
- Hydro Power:
 - Peru and Rock Falls Run-of-River Plants
- Contracted Capacity & Energy Purchases (Hedges)
 - Capacity with Nuclear Owner and Solar Farms
 - Energy Purchases from Regional Markets (ie., grid)



IMEA & STC Electric – Reliability & Sustainability

IMEA PORTFOLIO TRANSFORMATION & DECARBONIZATION



Source: IMEA Sustainability Plan 2024



CITY OF
ST. CHARLES
ILLINOIS • 1834

Why Extend the Contract Now???

- IMEA needs to work NOW to transition and replace resources that are going offline between now and 2035, especially with a goal of net-zero energy production by 2050.
- Without contract extensions, IMEA can't make agreements to procure power for members beyond 2035.
- The best power supply deals are 20-year deals – 20 to 30% lower pricing than shorter term deals. With only 11 years left on the member contracts, IMEA can't enter into those 20-year deals at this time.
- Long-term contracted resources (as IMEA has had throughout its relationship with the city) lead to affordable, reliable, and sustainable power – as the city has now. Many of those resources will serve our community well past 2035, in addition to the new resources that are needed. KEEP A GOOD THING GOING.
- IMEA needs to know how much new power to acquire to serve long term member needs beyond 2035. There are cost increases associated with buying too little or too much power.

Tentative Schedule

Continued Discussions @ Government Service Committee Meetings (GSC)

- April 01 GSC – Introduction
- April 22 GSC – IMEA Sustainability Plan
- May 28 GSC – Hold Open for Other Topics as Requested or Required
- June 24 GSC – IMEA Presentation & 1st Power Sales Contract Discussion
- July 22 GSC – Hold Open or 2nd Power Sales Contract Discussion & Committee Vote

May 31, 2025 – IMEA Deadline



CITY OF
ST. CHARLES
ILLINOIS • 1834

Questions.....Comments ???????



CITY OF
ST. CHARLES
ILLINOIS • 1834