



# Illinois Environmental Protection Agency

Bureau of Water • 1021 N. Grand Avenue E. • P.O. Box 19276 • Springfield • Illinois • 62794-9276

## Division of Water Pollution Control ANNUAL FACILITY INSPECTION REPORT

### for NPDES Permit for Storm Water Discharges from Separate Storm Sewer Systems (MS4)

*This fillable form may be completed online, a copy saved locally, printed and signed before it is submitted to the Compliance Assurance Section at the above address. Complete each section of this report.*

Report Period: From March, 2020 To March, 2021

Permit No. ILR40 0454

#### MS4 OPERATOR INFORMATION: (As it appears on the current permit)

Name: City of St. Charles Mailing Address 1: 2 E. Main Street  
Mailing Address 2: \_\_\_\_\_ County: Kane  
City: St. Charles State: IL Zip: 60174 Telephone: 630-377-4400  
Contact Person: Ken Jay Email Address: KJay@StCharlesIL.gov  
(Person responsible for Annual Report)

#### Name(s) of governmental entity(ies) in which MS4 is located: (As it appears on the current permit)

Kane County DuPage County

#### THE FOLLOWING ITEMS MUST BE ADDRESSED.

A. Changes to best management practices (check appropriate BMP change(s) and attach information regarding change(s) to BMP and measurable goals.)

- |  |                          |   |                          |
|--|--------------------------|---|--------------------------|
| 1. Public Education and Outreach             | <input type="checkbox"/> | 4. Construction Site Runoff Control       | <input type="checkbox"/> |
| 2. Public Participation/Involvement          | <input type="checkbox"/> | 5. Post-Construction Runoff Control       | <input type="checkbox"/> |
| 3. Illicit Discharge Detection & Elimination | <input type="checkbox"/> | 6. Pollution Prevention/Good Housekeeping | <input type="checkbox"/> |

B. Attach the status of compliance with permit conditions, an assessment of the appropriateness of your identified best management practices and progress towards achieving the statutory goal of reducing the discharge of pollutants to the MEP, and your identified measurable goals for each of the minimum control measures.

C. Attach results of information collected and analyzed, including monitoring data, if any during the reporting period.

D. Attach a summary of the storm water activities you plan to undertake during the next reporting cycle ( including an implementation schedule.)

E. Attach notice that you are relying on another government entity to satisfy some of your permit obligations (if applicable).

F. Attach a list of construction projects that your entity has paid for during the reporting period.

**Any person who knowingly makes a false, fictitious, or fraudulent material statement, orally or in writing, to the Illinois EPA commits a Class 4 felony. A second or subsequent offense after conviction is a Class 3 felony. (415 ILCS 5/44(h))**

  
Owner Signature:

Ken Jay, P.E.

Printed Name:

6/1/21  
Date:

Public Works Manager - Engineering

Title:

EMAIL COMPLETED FORM TO: [epa.ms4annualinsp@illinois.gov](mailto:epa.ms4annualinsp@illinois.gov)

or Mail to: ILLINOIS ENVIRONMENTAL PROTECTION AGENCY

WATER POLLUTION CONTROL  
COMPLIANCE ASSURANCE SECTION #19  
1021 NORTH GRAND AVENUE EAST  
POST OFFICE BOX 19276  
SPRINGFIELD, ILLINOIS 62794-9276

This Agency is authorized to require this information under Section 4 and Title X of the Environmental Protection Act (415 ILCS 5/4, 5/39). Failure to disclose this information may result in: a civil penalty of not to exceed \$50,000 for the violation and an additional civil penalty of not to exceed \$10,000 for each day during which the violation continues (415 ILCS 5/42) and may also prevent this form from being processed and could result in your application being denied. This form has been approved by the Forms Management Center.

**Illinois Environmental Protection Agency**  
**2021 Annual Facility Inspection Report**  
**for NPDES Permit for Stormwater Discharges from**  
**Municipal Separate Storm Sewer Systems (MS4)**

**City of Saint Charles, IL**

**MS4 Permit No. ILR400454**  
**Reporting Period March 1, 2020 to February 28, 2021**

## Table of Contents

<b><u>Part A. Changes to Best Management Practices.....</u></b>	<b><u>A-1</u></b>
<b><u>Part B. Status of Compliance with Permit Conditions.....</u></b>	<b><u>B-1</u></b>
<b><u>Part C. Information and Data Collection Results.....</u></b>	<b><u>C-1</u></b>
<b><u>Part D. Summary of Future Stormwater Activities.....</u></b>	<b><u>D-1</u></b>
<b><u>Part E. Notice of Relying on another Government Entity .....</u></b>	<b><u>E-1</u></b>
<b><u>Part F. Construction Projects Conducted During the Reporting Year .....</u></b>	<b><u>F-1</u></b>

**Attachment A. Kane County MS4 Annual Facility Inspection Report**

## Part A. Changes to Best Management Practices

Information regarding the status of BMPs and measurable goals is provided in the following table.

**Note: “X” indicates BMPs that were implemented in accordance with the MS4’s SMPP**

**✓ indicates BMPs that were changed during the reporting year**

A. Public Education and Outreach	
X	A.1 Distributed Paper Material
X	A.2 Speaking Engagement
X	A.3 Public Service Announcement
X	A.4 Community Event
X	A.5 Classroom Education Material
X	A.6 Other Public Education
B. Public Participation/Involvement	
X	B.1 Public Panel
	B.2 Educational Volunteer
X	B.3 Stakeholder Meeting
	B.4 Public Hearing
X	B.5 Volunteer Monitoring
	B.6 Program Coordination
	B.7 Other Public Involvement
C. Illicit Discharge Detection and Elimination	
X	C.1 Storm Sewer Map Preparation
X	C.2 Regulatory Control Program
X	C.3 Detection/Elimination Prioritization Plan
X	C.4 Illicit Discharge Tracing Procedures
X	C.5 Illicit Source Removal Procedures
X	C.6 Program Evaluation and Assessment
X	C.7 Visual Dry Weather Screening
X	C.8 Pollutant Field Testing
	C.9 Public Notification
	C.10 Other Illicit Discharge Controls

D. Construction Site Runoff Control	
X	D.1 Regulatory Control Program
X	D.2 Erosion and Sediment Control BMPs
X	D.3 Other Waste Control Program
X	D.4 Site Plan Review Procedures
	D.5 Public Information Handling Procedures
X	D.6 Site Inspection/Enforcement Procedures
X	D.7 Other Construction Site Runoff Controls
E. Post-Construction Runoff Control	
X	E.1 Community Control Strategy
X	E.2 Regulatory Control Program
	E.3 Long Term O&M Procedures
	E.4 Pre-Const Review of BMP Designs
X	E.5 Site Inspections During Construction
X	E.6 Post-Construction Inspections
	E.7 Other Post-Const Runoff Controls
F. Pollution Prevention/Good Housekeeping	
X	F.1 Employee Training Program
X	F.2 Inspection and Maintenance Program
	F.3 Municipal Operations Storm Water Control
X	F.4 Municipal Operations Waste Disposal
X	F.5 Flood Management/Assess Guidelines
X	F.6 Other Municipal Operations Controls

## Part B. Status of Compliance with Permit Conditions

The City implements several stormwater Best Management Practices (BMP) to comply with the conditions of the MS4 Permit. In addition, Kane County implements stormwater BMPs and provides MS4 services for all residents of the County, including within St. Charles. This section summarizes the BMPs and MS4 related activities implemented by the City during the reporting year. The BMPs and services provided by the County are summarized in Part E.

BMPs were implemented in within the six MS4 Permit program areas:

- A. Public Education and Outreach
- B. Public Participation/Involvement
- C. Construction Site Runoff Control
- D. Post-Construction Runoff Control
- E. Illicit Discharge Detection and Elimination
- F. Pollution Prevention/Good Housekeeping.

### A. Public Education and Outreach

#### **BMP No. A1 Distributed Paper Material**

##### Measurable Goal(s):

- Distribute information sheets regarding stormwater BMPs, water quality BMPs, and proper hazardous waste use and disposal.
- Maintain a water quality/stormwater section on the City website.
- Maintain the City website, which offers links to additional educational information, and ways to contact City of St. Charles personnel.

##### Milestone:

- Continue performing the above-mentioned activities as they pertain to Public Education and Outreach.

##### BMP Status:

- MS4 informational materials are available from the City and are posted to the City's website
- The City actively pursues educational sheets prepared by the County, IEPA, USEPA, Center for Watershed Protection, Chicago Metropolitan Agency for Planning "CMAP" (previously Northeastern Illinois Planning Commission "NIPC"), University of Wisconsin Extension, Solid Waste of Kane County (Kane County Environmental Management) and other agencies and organizations.
- The City lists the Public Works Engineering Division phone number on all City outreach publications (print and web) to encourage residences to contact the City with environmental concerns.

#### **BMP No. A2 Speaking Engagement**

##### Measurable Goal(s):

- The County provides educational presentations related to stormwater management on a regular basis through involvement in local watershed groups and other environmental committees, ensuring that a minimum of one public presentation is given per year.
- The County tracks the number of speaking engagements, locations, and topics presented.

BMP Status:

- See Part E.

**BMP No. A3 Public Service Announcement**

Measurable Goal(s):

- A public service announcement for the “Clean Water for Kane” campaign was developed in 2014, and continues to be made available to the community through the County website, special showings, and other digital media outlets.

BMP Status:

- See Part E.

**BMP No. A4 Community Event**

Measurable Goal(s):

- The City attends and/or sponsors outreach events and scheduled meetings with the general public.
- Events are held on an as-needed or as-requested basis.
- Audiences may include homeowners associations, lake associations, businesses, and neighborhood groups.
- The County educates residents and other stakeholder groups on stormwater Best Management Practices through participation in environmental and watershed special events in the community, and regular community education/training events including the annual well and septic seminar hosted by the County Health Department.
- The County coordinates a minimum of one public educational workshop per year and participates in other community events.
- The County tracks the number of events, locations, and information distributed.

Milestone:

- Both the City and County to make available to the community the above-mentioned community events.

BMP Status:

- The City participated in annual Fox River Cleanup on 9/19/2020.
- See Part E.

**BMP No. A5 Classroom Education Material**

Measurable Goal(s):

- The City participates in classroom education at local schools with the County. The County prepares presentation materials with the support of the City.
- The County updates the classroom educational material database on an annual basis.

BMP Status:

- See Part E.

**BMP No. A6 Other Public Education**

Measurable Goal(s):

- The City maintains a web site that includes stormwater quality specific elements such as water quality, solid waste and hazardous material, stormwater, and general environmental health.
- The City updates the website and tracks the number of visitors to the website.
- The City provides a significant amount of information through links to other educational and informational sites.
- Install signage or stamped covers on storm water inlets.

Milestone:

- Provide the above-mentioned public education material.

BMP Status:

- The City has continued providing the public education material via the City website.
- All new inlets contain stamps stating that they drain to waterway

**B. Public Participation/Involvement**

**BMP No. B.1 Public Panel**

Measurable Goal(s):

- The City accepts comments on the Stormwater Management Program Plan (SMPP) through the City website, phone calls, or other media.
- The City evaluates comments and incorporates them, as appropriate, into the next revision of the SMPP.

Milestone:

- The City to accept comments on the SMPP and evaluate them for inclusion, as appropriate, in the next revision of the SMPP.

BMP Status:

- The City has continued accepting comments on the SMPP and evaluates comments for inclusion and incorporates comments into the next revision of the SMPP, as appropriate.

**BMP No. B.3 Stakeholder Meeting**

Measurable Goal(s):

- The City participates (and encourages the participation of local stakeholders) in Kane County stormwater program meetings or other sponsored watershed planning events.
- The City will adopt Watershed Plans per the direction and in coordination with Kane County.

Milestone:

- The City to be involved in watershed planning and management efforts with input from watershed stakeholders.

BMP Status:

- The City has continued to be involved in watershed planning and management efforts with input from watershed stakeholders.

- All Stormwater Management Planning Committee meetings are open to the public and agendas and minutes from the meetings are available on the County website.

**BMP No. B.5 Volunteer Monitoring**

Measurable Goal(s):

- Participate within the Fox River Watershed Monitoring Network, and the Fox River Study Group stream monitoring program.
- The County continues to take a multi-level approach to supporting stream monitoring efforts by holding a leadership role in watershed groups carrying out monitoring work, as well as by providing financial support for local volunteer monitoring programs and river monitoring via USGS stream gauges.
- The City supports the activities of the Fox River Study Group (FRSG)

Milestone:

- Continue to participate within the Fox River Watershed Monitoring Network, and the FRSG stream monitoring program.

BMP Status:

- Participated within the Fox River Watershed Monitoring Network, and the Fox River Study Group stream monitoring program.
- The City continues to support the FRSG
- See Part E for County activities.

**C. Illicit Discharge Detection and Elimination**

**BMP No. C.1 Storm Sewer Map Preparation**

Measurable Goal(s):

- Maintain and update the Outfall Inventory Map on an annual basis to incorporate permitted outfalls associated with new developments.
- The City performs an outfall inventory in an effort to search for new outfalls.

Milestone:

- The City to maintain and update its Outfall Inventory Map on an annual basis.
- The City to perform an outfall inventory on an annual basis.

BMP Status:

- The City continued to maintain and update its Outfall Inventory Map.
- The City continued to perform an outfall inventory on an annual basis.

**BMP No. C.2 Regulatory Control Program**

Measurable Goal(s):

- The County Watershed Development Ordinance allows the City to require inspection deposits, performance bonds, and to adopt/enforce violation procedures, which assist in achieving compliant construction sites.

Milestone:

- Enforce the Watershed Development Ordinance



BMP Status:

- The City continues to enforce the Watershed Development Ordinance

**BMP No. C.4 Illicit Discharge Tracing Procedures**

Measurable Goal(s):

- The City utilizes procedures to trace detected illicit discharges, which includes methods of testing such as dye testing, smoke testing, and/or remote video inspections.

Milestone:

- The City to utilize procedures to trace detected illicit discharges.

BMP Status:

- The City continues to trace detected illicit discharges as detected.

**BMP No. C.5 Illicit Source Removal Procedures**

Measurable Goal(s):

- The City utilizes an eight step procedure to identify and remove an illicit discharge to the storm sewer system.

Milestone:

- The City to utilize procedures to remove illicit discharges to the storm sewer system.

BMP Status:

- The City continues to remove illicit discharges to the storm sewer system as detected.

**BMP No. C.6 Program Evaluation and Assessment**

Measurable Goal(s):

- The City evaluates the effectiveness of the illicit discharge detection and elimination program in an effort to determine the effectiveness of the program on a long-term basis and show ongoing improvement through a reduced number of outfalls having positive indicators of potential pollutants. The City intends to have the majority of dry-weather pollution sources eliminated after several years of annual screening.

Milestone:

- The City to evaluate the effectiveness of the illicit discharge detection and elimination program annually.

BMP Status:

- The City evaluated the effectiveness of the illicit discharge detection and elimination program in an effort to determine the effectiveness of the program on a long-term basis and show ongoing improvement through a reduced number of outfalls having positive indicators of potential pollutants.

**BMP No. C.7 Visual Dry Weather Screening**

Measurable Goal(s):

- The City implements a Direct Connection Illicit Discharge Program consisting of three (3) principal components: program planning, outfall screening, and follow-up investigation and program evaluation.
- The City determines if there are outfalls that require a follow up investigation, target sewer system areas for detailed investigation and then conducts field investigations to identify potential sources.

Milestone:

- The City to implement a Direct Connection Illicit Discharge Program
- The City to conduct dry weather screening.

BMP Status:

- The City continues to implement a Direct Connection Illicit Discharge program.
- The City continues to perform dry weather screening.

**BMP No. C.8 Pollutant Field Testing**

Measurable Goal(s):

- Perform pollutant filed testing to identify the nature of pollution and identify potential sources.

Milestone:

- Perform pollutant filed testing as needed

BMP Status:

- The City continues to perform pollutant filed testing as needed

**D. Construction Site Runoff Control**

**BMP's No. D.1/D.2/D.3/D.4/D.6/D.7**

Measurable Goal(s):

- The City enforces the Kane County Stormwater Ordinance and Technical Manual, which addresses requirements of the Construction Site Runoff Control Measures.

Milestone:

- The City to enforce the Kane County Stormwater Ordinance and Technical Manual.

BMP Status:

- The City, which is a Certified Community for the review, permitting, inspection and enforcement of the provisions of the Technical Manual, has adopted and enforces the Kane County Stormwater Ordinance and Technical Manual. The County Technical Manual addresses requirements of the Construction Site Runoff Control Measures.

**E. Post-Construction Runoff Control**

**BMP's No. E.1/E.2/E.5/E.6**

Measurable Goal(s):

- The City enforces the Kane County Stormwater Ordinance and Technical Manual, which addresses requirements of the Post-Construction Runoff Control Measures.

Milestone:

- The City to enforce the Kane County Stormwater Technical Manual.

BMP Status:

- The City, which is a Certified Community for the review, permitting, inspection and enforcement of the provisions of the Technical Manual, has adopted and enforces the Kane County Stormwater Ordinance and Technical Manual. The County Technical Manual addresses requirements of the Construction Site Runoff Control Measures.

**F. Pollution Prevention/Good Housekeeping**

**BMP No. F.1 Employee Training Program**

Measurable Goal(s):

- The City provides on-going education and training to staff to ensure that all of its employees have the knowledge and skills necessary to perform their functions effectively and efficiently.

Milestone:

- The City to provide on-going education and training to City staff. This can be achieved through webinars, training conferences, or in house training sessions.

BMP Status:

- Training was provided to City staff through County events, professional conferences, webinars, and in house training sessions.

**BMP No. F.2 Inspection and Maintenance Program**

Measurable Goal(s):

- The City performs the following activities as part of its Inspection and Maintenance Program:
  - Street sweeping operations approximately 10 to 15 times per year, to reduce potential illicit discharges and to provide a clean environment,
  - The City's Detention/Retention Pond Checklist is used to determine inspection locations before and during a forecasted storm event. Observed obstructions are cleared and debris is hauled to the spoil waste area.
  - The City adheres to the Roadway Culvert/Bridge Checklist for inspection and maintenance of culverts and bridges.
  - The City maintains a Storm Sewer Atlas, which is used to track the inspection and cleaning of catch basins.
  - The City documents observed or reported erosion or sediment accumulation within swales and overland flow paths and performs remediation or initiates remediation through coordination with property owners, as necessary.

Milestone:

- The City to continue conducting inspections and performing its maintenance programs.

BMP Status:

- The City has continued providing inspection and maintenance.

**BMP No. F.4 Municipal Operations Waste Disposal**

Measurable Goal(s):

- The City performs the following activities as part of its Municipal Operations Waste Disposal:
  - Maintains its general facilities, municipal roads, associated maintenance yards, and other public areas.
  - Ensures that landscape contractors are provided with training and/or other information to ensure that they adhere to the City's SMPP.
  - Adheres to snow removal and ice control procedures that aim to use the minimal amount of salt and de-icing chemicals necessary for effective control,
  - Adheres to vehicle and equipment fueling procedures and practices designed to minimize or eliminate the discharge of pollutants to the stormwater management system,
  - Adheres to vehicle maintenance procedures and practices designed to minimize or eliminate the discharge of petroleum-based pollutants to the storm water management system,
  - The City's Waste Management program helps prevent the release of waste materials into the stormwater management system including receiving waters, and
  - The City's Water Conservation practices minimize water use and help to avoid erosion and/or the transport of pollutants into the stormwater management system.

Milestone:

- The City to continue following its procedures for Municipal Operations Waste Disposal.

BMP Status:

- The City has continued following its procedures for Municipal Operations Waste Disposal.

**BMP No. F.5 Flood Management/Assessment Guidelines**

Measurable Goal(s):

- The County implements the Kane County Hazard Mitigation Program and will host two Hazard Mitigation Committee meetings per year to coordinate ongoing implementation of the plan.

BMP Status:

- See Part E

**BMP No. F.6 Other Municipal Operations Controls**

Measurable Goal(s):

- The City will implement road salt application and storage BMPs to minimize salt runoff into waterways, train staff on deicing and salt management procedures on an annual basis, and track the number of training events and participants each year.

Milestone:

- Implement road salt application and storage BMP procedures.

BMP Status:

- The City performed:
  - Ongoing training on salt application and storage procedures.
  - Salt storage under cover to minimize concentrated salt runoff into waterways.

## **Part C. Information and Data Collection Results**

The City collects water quality samples annually and supplies the analysis results to the Fox River Study Group (FRSG). FRSG implements a regional water quality monitoring program and the City, as a member, has access to all of FRSG watershed scale monitoring information. The monitoring results inform both local MS4 program implementation and support regional water quality planning. Results are available from the FRSG.

## **Part D. Summary of Future Stormwater Activities**

The City intends to implement the BMPs described in Part B of this report during the next implementation and reporting year. Any changes to the BMPs determined necessary or beneficial to the City program will be noted within the next annual report.

## **Part E. Notice of Relying on another Government Entity**

Kane County implements stormwater BMPs throughout the County, and provides MS4 services for all residents of the County, including within St. Charles. Attachment A summarizes the BMPs and MS4 related services implemented by the County that supplement the City's program.



## Part F. Construction Projects Conducted During the Reporting Year

Project Name	Project Size (acres)	Construction Start Date	Construction End Date
No Major City Projects			

Illinois Environmental Protection Agency  
ANNUAL FACILITY INSPECTION REPORT  
for NPDES Permit for Storm Water Discharges  
from Municipal Separate Storm Sewer Systems (MS4)

**Kane County, Illinois (NPDES Permit No. ILR400259)**

**YEAR 5: *March 1, 2020 - February 28, 2021***

**I. CHANGES TO BEST MANAGEMENT PRACTICES**

There are no changes to the Best Management Practices for the six minimum control measures as described in the Notice of Intent for Kane County submitted on May 27, 2016.

**II. STATUS OF COMPLIANCE WITH PERMIT CONDITIONS**

Kane County submitted a Notice of Intent on May 27, 2016, which initiated a new 5-year permit cycle. The BMPs listed in the 2016 Notice of Intent were selected to meet NPDES Phase II program requirements and minimize nonpoint source pollution in Kane County, Illinois.

The implementation progress for each of these BMPs is summarized below in sections A—F. All BMPs described in Kane County’s 2016 Notice of Intent have been implemented on or ahead of schedule, with the exception of select items noted in their descriptions below.

**A. PUBLIC EDUCATION AND OUTREACH**

**1. BMP A.1—Distributed Paper Material**

<b>MEASURABLE GOALS</b>	Include “Water Wise Corner” in the <i>Kane County Recycles Green Guide</i> , which is developed and distributed throughout Kane County on an annual basis. Revise “Water Wise Corner” every spring. Track the total number of recipients each year.
<b>RESULTS</b>	<p>The “Clean Water for Kane” section was included in the <i>Kane County Recycles Green Guide</i> for 2020, which was distributed to 45,000 residents countywide via 30,000 print copies and 15,000 digital downloads of the document from the Kane County website. Printed copies of the <i>Green Guide</i> were also distributed at multiple community events (see A.4 Community Event).</p> <p>The “Clean Water for Kane” section was included in the Kane County Recycles Green Guide for 2020, which was distributed to 30,000 residents countywide via printed and electronic copies. Printed copies of the Green Guide are traditionally distributed at community events, however, due to the COVID-19 pandemic, many community events were cancelled or held virtually.</p>

present:

## Use LESS. Use WISELY.

### ENERGY

- Use ENERGY STAR** rated appliances to conserve energy: dishwashers, refrigerators, and laundry machines.
- Stop idling** your vehicle: Idling wastes fuel and money, is unnecessary for most modern vehicles, and contributes to air pollution.
- Use lighting, heating, and cooling modestly**, taking advantage of natural lighting and using a "smart" thermostat. Turn off when not in use.
- Insulate**: particularly in attics and basements where most heat is lost. Use door draft stoppers in winter.
- Bike, walk, or use public transportation** when possible: Reducing single-passenger vehicle miles travelled drastically reduces fuel consumption and greenhouse gas emissions.

### WATER

- Use WaterSense** rated fixtures to conserve water: faucets, toilets, shower heads, and irrigation systems.
- Water wisely**: Water lawns deeply and infrequently to encourage deep root growth. Ideally, your lawn only needs 1 inch of water per week.
- Install a rain barrel and rain garden**: This conserves potable water and replenishes groundwater supplies.
- Salt sensibly**: Excessive road salt during winter months is harming our water resources. Shovel first, then apply salt wisely.
- Protect**: Only rain down the storm drain. Keeping household chemicals, cleaners, and lawn chemicals (pesticides, herbicides, & fertilizers) from being dumped into or washed down storm drains.

### RESOURCES

- Move toward reusables**: Mugs, bags, food storage, service ware, toiletries... this list is endless. Specifically, avoid single-use plastics and plastic packaging.
- Utilize organics**: Reduce waste and compost food scraps to return nutrients to the soil rather than send them to a landfill, where they become unusable waste and create methane gas emissions.
- Conscientious purchasing**: Buy only what you need, being conscious of what the product is made of, how far it travelled to reach you, and how long you will use it for.

**Does one disposable cup matter? One straw? One bag? The answer is definitely – yes.**

The choices of each individual matter. After all, with 7.7 billion people in the world and approximately 535,000 of those people in Kane County, those "ones" add up to be a detriment to the planet... or a lifeline, if we all make one more decision to be conscious of the resources we use and waste we create. That is one LESS plastic bag, or disposable, unnecessary item multiplied by <you decide this number> because of your choices.

If each person in Kane County refused one straw, we could eliminate the equivalent of 76 miles of straws.

-Jessica Mino, Resource Management Coordinator for the Division of Environmental and Water Resources

**Kane County Spring Rain Barrel Sale**

Details will be available at: [www.countyofkane.org](http://www.countyofkane.org)

-Division of Environmental and Water Resources webpage

Learn more about going solar at a **Solar Power Hour** near you, expected to begin in April 2020.

Presented by: Kane County, the Citizens Utility Board, and **Midwest Renewable Energy Association**.

Details can be found at: [growsolar.org/chicagoland/](http://growsolar.org/chicagoland/)

## 2. BMP A.2—Speaking Engagement

MEASURABLE GOALS	Provide educational presentations related to stormwater management on a regular basis through involvement in local watershed groups and other environmental committees, ensuring that a minimum of one public presentation is given per year. Track the number of speaking engagements, locations, topics presented, and number of attendees at each engagement.
RESULTS	

	<p>The presentations listed below were given by Kane County staff during the permit year of March 1, 2020 — February 28, 2021:</p> <ul style="list-style-type: none"> <li>• Fox River Water Trail Project: March 4, 2020, <i>Crystal Lakes Green Drinks</i>; via Zoom</li> <li>• Fox River Water Trail Project: October 17, 2020, <i>Learn from the Experts Class for the Forest Preserve District of Kane County</i>; via Zoom</li> <li>• “Kane County Stormwater Infrastructure” – presentation to Tyler Creek Watershed Coalition [10/21/2020; 26 attendees]</li> <li>• “Kane County Stormwater Infrastructure” – presentation to Village of Pingree Grove at Village Board Meeting via Zoom [12/7/20; 25 attendees]</li> <li>• “Wetlands &amp; Wetland Protection in Kane County” – presentation to Fox River Ecosystem Partnership Virtual Noon Network Meeting [1/13/21, 20 attendees]</li> <li>• Fox River Water Trail Project: March 11, 2021, <i>Fox River Summit, Burlington, WI</i></li> <li>• 2021 Kane-DuPage Soil &amp; Water Conservation District Soil Erosion &amp; Stormwater Seminar (webinar), presentation on Countywide Stormwater Infrastructure Mapping” [2/18/2021, 266 attendees]</li> <li>• Recycling Presentations that included information on proper Household Hazardous Waste Disposal: Western Avenue School [3/4/20, 68 attendees], Kane County Sheriff’s Office [3/4/20, 50 attendees] , Zoom – Waubensee Online Presentation [4/13/20, 243 attendees], Zoom - Green Drinks McHenry County Env. Defenders [1/13/21, 80 attendees, 325 views on youtube], Zoom - School Recycling Video [2/21/21, 22 attendees].</li> </ul>
--	--

### 3. BMP A.3—Public Service Announcement

<b>MEASURABLE GOALS</b>	<p>A public service announcement for the “Clean Water for Kane” campaign was developed in 2014, and is made available to the community through the Kane County website, special showings, and other digital media outlets.</p> <p>Track the number of PSA showings, locations, and audience reached each year.</p>
<b>RESULTS</b>	<p>During the permit year, the PSA was posted on the Kane County website at: <a href="http://www.countyofkane.org/Pages/commDisp.aspx?focusID=145">http://www.countyofkane.org/Pages/commDisp.aspx?focusID=145</a>. No special showings of the PSA were organized by Kane County due to a lack of funding.</p>

	 <p>PSA on Kane County website</p>
--	---

#### 4. BMP A.4—Community Event

<b>MEASURABLE GOALS</b>	<p>Educate residents and other stakeholder groups on stormwater Best Management Practices through participation in environmental and watershed special events in the community, and regular community education/training events including the annual well and septic seminar hosted by the Kane County Health Department. Coordinate a minimum of one public educational workshop per year and participate in other community outreach events. Track the number of events, locations, information distributed, and number of participants for each event.</p>
<b>RESULTS</b>	<p>Kane County staff participated in the community events listed below during the permit year of March 1, 2020 - February 29, 2021. Stormwater educational handouts—including <i>Green Guides</i> (see A.1 Distributed Paper Material), homeowner resource cards, and natural landscaping brochures—were distributed at these community events.</p> <p>Kane County staff participated in the community events listed below during the permit year of March 1, 2020 – February 29, 2021. Some community events were shifted online to “virtual events” due to the COVID-19 pandemic or cancelled due to lack of resources and time to transition events online. Stormwater educational handouts – including the Green Guides (see A.1 Distributed Paper Material) were distributed at the community events held in person, virtual links to the <i>Clean Water for Kane</i> website - which hosts all Kane County stormwater educational materials for the public (see A.6 Other Public Education) - were made available for virtual events.</p>

	<ul style="list-style-type: none"> <li>• One Earth Film Festival [3/9/2020]</li> <li>• Fox Valley Sustainability Network Flooding and Green Infrastructure Webinar Virtual [5/6/2020, Kane County staff present on Stormwater Management Ordinance]</li> <li>• Fox Valley Sustainability Network Screening of ‘Microplastic Madness’ and Webinar Discussion [11/18/20]</li> <li>• Kane County Rain Barrel Sale and Pick-Up Day in St. Charles [5/27/20, 32 attendees]</li> </ul> <p>The Kane County Health Department did not host its annual Well &amp; Septic educational events for the public due to the COVID-19 pandemic.</p> <p>KCDEWR co-sponsored and assisted with the construction of a 40X18 rain garden at the Kane County Farm Bureau office. Excavation/construction was completed with KCDEWR staff on 7/14/20 and plantings were installed at a community planting event organized by the KC Farm Bureau on 7/18/20 in which more than 20 volunteers installed about 400 native plants.</p>  <p><a href="http://www.chicagotribune.com/suburbs/aurora-beacon-news/ct-abn-rain-garden-st-0721-20200720-fgwn2frsczgerdrxqh4anentf-m-story.html">http://www.chicagotribune.com/suburbs/aurora-beacon-news/ct-abn-rain-garden-st-0721-20200720-fgwn2frsczgerdrxqh4anentf-m-story.html</a></p>
--	---

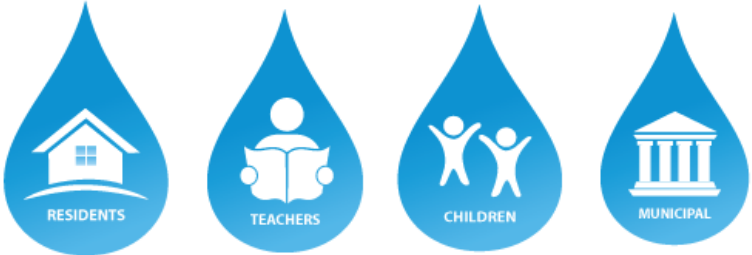
## 5. BMP A.5—Classroom Education Material

<b>MEASURABLE GOALS</b>	Maintain a collection of stormwater-related educational materials for use in the classroom, and also reach students in the community through educational displays at libraries and other community venues. Update the classroom educational material database on an annual basis. Track the number of educational displays, locations, materials distributed, and number of students reached throughout the year.
<b>RESULTS</b>	<p>During the permit year, the Kane County Department of Environmental &amp; Water Resources updated the youth educational resource list available on the County website at: <a href="http://www.countyofkane.org/FDER/Pages/EnvironmentalResources/stormwaterEducation/children.aspx">www.countyofkane.org/FDER/Pages/EnvironmentalResources/stormwaterEducation/children.aspx</a>.</p> <p>Additionally, the Department provided educational materials—including water</p>



	<p>conservation coloring books and stickers, <i>Clean Water for Kane</i> rain gages, toilet leak detection tabs, pet waste tip cards, and outdoor water use brochures—to partner organizations, particularly the Forest Preserve District of Kane County and Friends of the Fox River for the Schweitzer Environmental Center.</p> <p>During the permit year, the Kane County Department of Environmental and Water Resources updated the youth educational resource list available on the county website:  <a href="https://www.countyofkane.org/FDER/Pages/environmentalResources/waterResources/children.aspx">https://www.countyofkane.org/FDER/Pages/environmentalResources/waterResources/children.aspx</a> as well as the teacher educational resource list available on the county website:  <a href="https://www.countyofkane.org/FDER/Pages/environmentalResources/waterResources/teachers.aspx">https://www.countyofkane.org/FDER/Pages/environmentalResources/waterResources/teachers.aspx</a></p> <p>Additionally, Kane County Department of Environmental and Water Resources allocated \$500 of FY20 funding to Friends of the Fox River (FOFR) for their Classroom Educational Programming and pledges the same amount for FY21.</p>
--	--

## 6. BMP A.6 – Other Public Education

<b>MEASURABLE GOALS</b>	<p>The Kane County Department of Environmental &amp; Water Resources maintains a “Clean Water for Kane” website, and also develops seasonal stormwater-related informational articles that are distributed through the <i>Kane County Connects</i> e-newsletter, website, and social media pages. Update the “Clean Water for Kane” web pages on an annual basis. Track the number of stormwater-related articles in <i>Kane County Connects</i>, topics covered, and audience reach each year.</p>
<b>RESULTS</b>	<p>During the permit year, the Kane County Department of Environmental &amp; Water Resources updated the “Stormwater Education” pages on the County website.</p> <p style="text-align: center;"><b>Stormwater Education</b></p> <hr style="width: 50%; margin: auto;"/> <div style="text-align: center;">  <p>RESIDENTS      TEACHERS      CHILDREN      MUNICIPAL</p> </div> <p style="text-align: center;">Stormwater Education page of the Kane County website:  <a href="http://www.countyofkane.org/FDER/Pages/EnvironmentalResources/stormwaterEducation.aspx">www.countyofkane.org/FDER/Pages/EnvironmentalResources/stormwaterEducation.aspx</a></p> <p>In addition, five water-related articles were published in <i>Kane County Connects</i>:</p> <ul style="list-style-type: none"> <li>• <i>Kane-DuPage Soil and Water Conservation District Holds Feb 11</i></li> </ul>

	<p><i>Election</i> [1/5/21] <a href="https://kanecountyconnects.com/2021/01/kane-dupage-soil-and-water-conservation-district-holds-feb-11-election/">https://kanecountyconnects.com/2021/01/kane-dupage-soil-and-water-conservation-district-holds-feb-11-election/</a></p> <ul style="list-style-type: none"> <li>• <i>1 Inch of Water = \$25,000 Damage – Here’s How Kane Residents Can Get FEMA Flood Insurance</i> [3/11/21] <a href="https://kanecountyconnects.com/2021/03/1-inch-of-water-25000-damage-heres-how-kane-residents-can-get-fema-flood-insurance/">https://kanecountyconnects.com/2021/03/1-inch-of-water-25000-damage-heres-how-kane-residents-can-get-fema-flood-insurance/</a></li> <li>• <i>Task Force Announces Dec 1-3 State Water Plan Stakeholder Meetings</i> [11/24/20] <a href="https://kanecountyconnects.com/2020/11/task-force-announces-dec-1-3-state-water-plan-stakeholder-meetings/">https://kanecountyconnects.com/2020/11/task-force-announces-dec-1-3-state-water-plan-stakeholder-meetings/</a></li> <li>• <i>Tyler Creek Watershed Coalition ‘Zooms’ Oct 21 Membership Meeting, Webinar</i> [10/20/20] <a href="https://kanecountyconnects.com/2020/10/tyler-creek-watershed-coalition-zooms-oct-21-membership-meeting-webinar/">https://kanecountyconnects.com/2020/10/tyler-creek-watershed-coalition-zooms-oct-21-membership-meeting-webinar/</a></li> <li>• <i>Kane County Celebrates 50 Years of Earth Day!</i> [4/21/20] <a href="https://kanecountyconnects.com/2020/04/kane-county-celebrates-50-years-of-earth-day/">https://kanecountyconnects.com/2020/04/kane-county-celebrates-50-years-of-earth-day/</a></li> </ul> <p><i>Kane County Connects</i> reaches 11,918 newsletter subscribers and over 7,372 followers on social media.</p>
--	--

## 7. BMP A.6 – Other Public Education

<b>MEASURABLE GOALS</b>	The Kane County Department of Environmental & Water Resources maintains a supply of “Kane County Streams” signs to be installed at road crossings throughout the County. Kane County will provide the signs to MS4 communities as requested for installation within their own municipal boundaries, and will maintain a database of signs manufactured and installed throughout the year.
<b>RESULTS</b>	<p>During the permit year, Kane County provided stream signs to the following community: Unincorporated Kane County, working with Jelkes Creek Watershed Group to place stream signs along new roadways:</p> <p>Unincorporated Kane County – Provided coordination with local watershed groups and Kane County DOT for the installation of 8 signs total, 2 signs at the Jelkes Creek Watershed boundary, 6 signs at waterway crossings along the Fox River, School Creek and Potawatomi Trail Creek; Signed to be installed in Spring 2021 (next reporting NPDES period)</p>

## B. PUBLIC PARTICIPATION/INVOLVEMENT

### 1. BMP B.3—Stakeholder Meeting

<b>MEASURABLE GOALS</b>	Kane County is involved in watershed planning and management efforts that seek input from a variety of watershed stakeholders. Provide notice of stakeholder meetings on the Kane County website and distribute meeting information to
-------------------------	--



	stakeholder email lists. Track the number of watershed meetings hosted or co-hosted by the County, meeting locations, topics discussed, and participation numbers.
<b>RESULTS</b>	<p>During the permit year, the following stakeholder meetings were held by Kane County:</p> <ul style="list-style-type: none"> <li>• Tyler Creek Watershed Coalition meetings – [4/22/20, field mtg on BMPs, 9 attendees; 5/20/20 via Zoom; 7/15/20 via Zoom; 8/19/20 via Zoom; 9/16/20 via Zoom; 10/21/20 via Zoom; 11/18/20 via Zoom; 12/16/20 via Zoom; 1/20/21 via Zoom; 2/17/21 via Zoom]</li> <li>• Indian Creek Watershed Plan Steering Committee – meetings held virtually due to COVID-19; [4/9/20, 9/24/20, 9/30/20, 12/16/20, ]</li> <li>• Stormwater Management Planning Committee – meetings for Flood Control Commission, Comprehensive Stormwater Plan, and Stormwater Management Ordinance; virtual meeting due to COVID-19 (and also at the Kane County Government Center in Geneva) [7/14/20]</li> </ul> <p>All Stormwater Management Planning Committee meetings are open to the public, and agendas and minutes from these meetings are available on the County website: <a href="http://www.countyofkane.org/Pages/CountyBoard/committee.aspx?clD=52">www.countyofkane.org/Pages/CountyBoard/committee.aspx?clD=52</a></p>

## 2. BMP B.5—Volunteer Monitoring

<b>MEASURABLE GOALS</b>	Kane County continues to take a multi-level approach to supporting stream monitoring efforts by holding a leadership role in watershed groups carrying out monitoring work, as well as by providing financial support for local volunteer monitoring programs and river monitoring via USGS stream gages. Maintain Joint Funding Agreement with USGS and allocate funding for stream gages. Support local volunteer monitoring program. Track the number of leadership meetings attended and the funding provided on an annual basis.
<b>RESULTS</b>	<p>Kane County staff served on the Board of Directors of the Fox River Study Group and as an advisor to the Fox River Ecosystem Partnership, attending the following meetings during the permit year:</p> <ul style="list-style-type: none"> <li>• Fox River Study Group meetings held via Zoom due to COVID-19 [4/30/20, 5/28/20, 6/25/20, 7/23/20, 8/27/20, 9/24/20, 10/22/20, 10/29/20, 11/19/20, 12/17/20, 1/28/21]</li> <li>• Fox River Ecosystem Partnership meetings held via Zoom due to COVID-19 [5/13/20, 7/8/20, 9/6/20, 1/13/21]</li> </ul> <p>In addition, the Kane County Department of Environmental &amp; Water Resources provided financial support of \$500 to the Friends of the Fox River for their volunteer monitoring program.</p>

	A Joint Funding Agreement between Kane County and the U.S. Geological Survey was signed on 10/1/2020 and passed by Kane County Board on 10/13/2020 to cover the time period through September 30, 2021. Kane County has committed \$56,439 of FY21 funding to support five stream gages and four precipitation gages.
--	---

### 3. BMP B.7—Other Public Involvement

<b>MEASURABLE GOALS</b>	Kane County will provide technical and financial support to the Friends of the Fox River and other local watershed groups to ensure that opportunities exist for public involvement in stream cleanup efforts. Allocate funding to support stream cleanups on an annual basis. Track the number of planning meetings or cleanup events attended by Kane County staff each year.
<b>RESULTS</b>	The Kane County Department of Environmental & Water Resources provided \$500 in December 2020 to the Friends of the Fox River to support stream cleanups throughout the county. As normal group stream cleanups could not be done in 2020, FOFR coordinated “Alternative Spring Clean-ups” through Facebook to encourage residents to do their own personal or family unit clean ups and post their results on the FOFR Facebook page. FOFR reported this activity was very successful with numerous individuals and families in the Fox River Watershed participating. In September, FOFR coordinated their 2 <sup>nd</sup> Annual “It’s Our Fox River Day” and reported that there were 4 clean-up sites in Elgin that had a total of more than 100 participants joining in to clean up the banks of the Fox River.

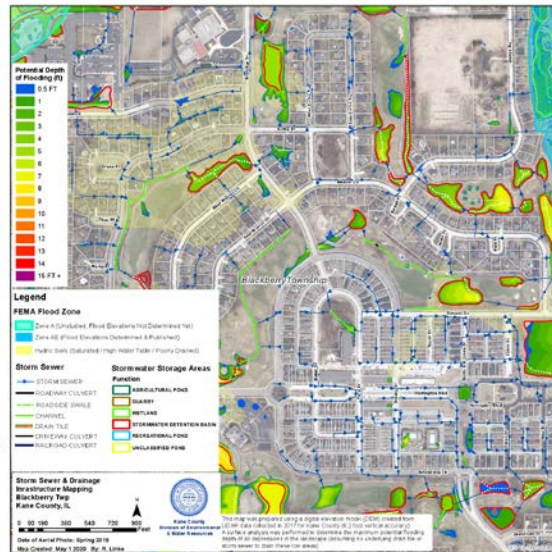
## C. ILLICIT DISCHARGE DETECTION AND ELIMINATION

### 1. BMP C.1—Storm Sewer Map Preparation

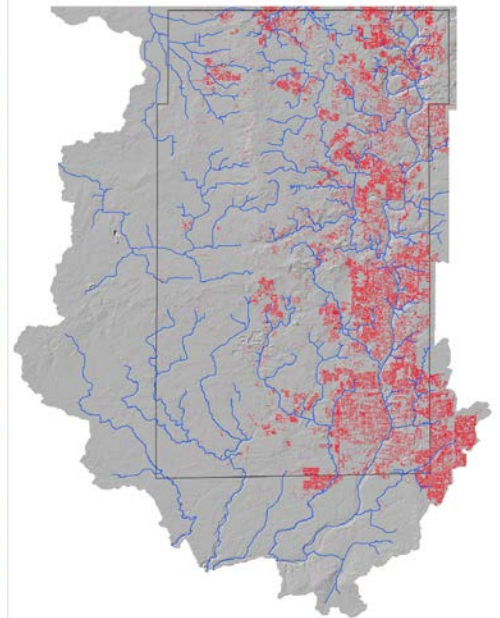
<b>MEASURABLE GOALS</b>	Kane County will update its storm sewer mapping in GIS to include the location and size of all County-owned stormwater outfalls to receiving streams in the urbanized area, and will distribute up-to-date mapping and information across County departments including the Facilities, Transportation, and Emergency Management departments. Update the stormwater system map layer on an annual basis to incorporate new stormwater outfalls identified.
-------------------------	---

## RESULTS

During the permit year, the KCDEWR made significant improvements to the County's stormwater mapping resources. The County's stormwater mapping resources have been expanded to serve as a countywide drainage infrastructure layer that includes storm sewer routes and detention basin locations for nearly all the municipalities within the County (both MS4 communities and rural communities in the county). The storm sewer mapping has been expanded from 313 miles of storm sewers, culverts, and drain tiles in the unincorporated areas to now include more than 2,300 miles of drainage system mapping across the entire county. The storm sewer / culvert segments mapped to date (67,000+ individual items) have been burned into the County's Digital Elevation Model (from 2017, ft horizontal resolution) to create a hydro-enforced DEM that was then analyzed to create an accurate storm flow path network. This storm flow path network shows how stormwater moves across the county at any location down to the nearest receiving stream. This will give the county and MS4 communities a new tool to use in tracing illicit discharges and quickly mitigating them before they move farther downstream. As it is a collaborative effort with the municipalities, the data layers will be provided back to all the municipalities to help supplement their MS4 mapping resources in 2021 and beyond. The preliminary, static PDF maps showing the complete drainage system network are available to all municipal staff persons in the county at: <https://www.countyofkane.org/FDER/Pages/County-Drainage-Maps.aspx> Updates will be made to the map layers and static maps at least twice a year as new data is provided to the County. It is the goal of the County to make the maps available to the general public during the next reporting period.



Sample of Kane County's Storm Sewer Map



Map of countywide drainage infrastructure GIS layer in Feb 2021

## 2. BMP C.2—Regulatory Control Program

<b>MEASURABLE GOALS</b>	Kane County will utilize regulatory authority to prohibit, inspect, and follow-up with enforcement for illegal discharges into the County's MS4 by following established procedures at the Kane County Health Department. Track the number of illicit discharges identified on an annual basis and document the actions taken to eliminate the discharges.
<b>RESULTS</b>	The Kane County Health Department has continued to enforce its regulatory authority to prohibit, inspect, and follow-up with enforcement for illegal discharges into the County's MS4. During this reporting period, the Health Department investigated 29 potential septic failure complaints. 21 of the 29 were resolved during the reporting period, with 8 septic failures still open and awaiting resolution.

## 3. BMP C.10—Other Illicit Discharge Controls

<b>MEASURABLE GOALS</b>	Kane County's Environmental Health staff are trained to identify potential illicit discharges to the County's MS4 and to follow the established procedures for eliminating the discharges. Conduct illicit discharge detection training for Environmental Health staff on an annual basis. Track the number of staff trained and total hours of training received.
<b>RESULTS</b>	Kane County Health Department did not perform any staff training during this reporting period due to the COVID-19 pandemic.

## D. CONSTRUCTION SITE RUNOFF CONTROL

### 1. BMP D.1—Regulatory Control Program

<b>MEASURABLE GOALS</b>	The Kane County Stormwater Management Ordinance addresses all requirements of the Construction Site Runoff Control measures, D.1-D.7. Implement and enforce the Kane County Stormwater Ordinance, maintaining and updating program documentation annually.
<b>RESULTS</b>	During the permit year, 66 Stormwater Permit Applications were submitted to the County. All of these proposed projects were reviewed with consideration of Construction Site Runoff under the requirements of the Kane County Stormwater Management Ordinance. Permits are digitally tracked in the Kane County – CityView system, in addition to a digital copy the County maintains of the permits and plans for Stormwater Permit Applications.

	<p>The Kane County Department of Environmental &amp; Water Resources continued the process of revising the Stormwater Management Ordinance that began in 2017 by hosting monthly Stormwater Management Planning Committee meetings (see B.3—Stakeholder Meeting). The formal review process was completed in 2019, including review by government agencies and public hearings. The Stormwater Management Ordinance Updates were formally adopted on 6/1/19.</p>
--	--

## E. POST-CONSTRUCTION RUNOFF CONTROL

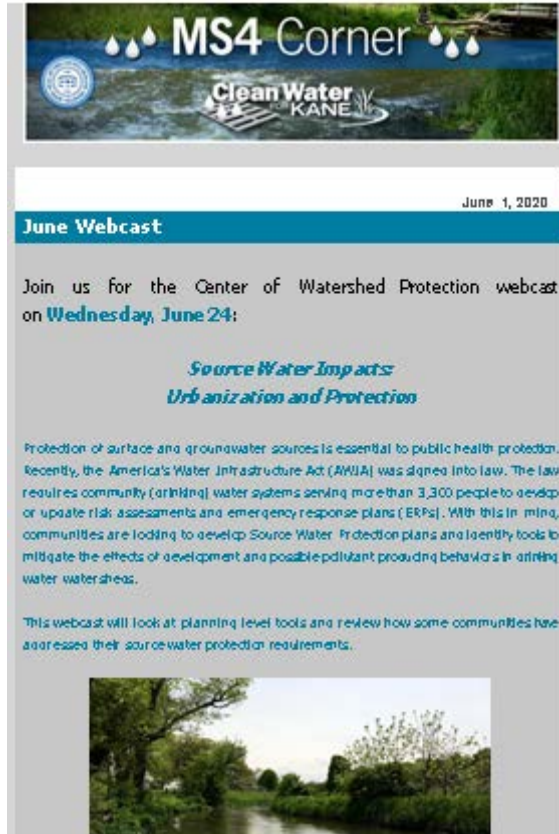
### 1. BMP E.2—Regulatory Control Program

<b>MEASURABLE GOALS</b>	<p>The Kane County Stormwater Management Ordinance addresses all requirements of the Post-Construction Runoff Control measures, E.1-E.7. Implement and enforce the Kane County Stormwater Ordinance, maintaining and updating program documentation annually.</p>
<b>RESULTS</b>	<p>During the reporting period, 42 Stormwater Permits were issued. Post-Construction Runoff Control measures were implemented on these projects under the requirements of the Kane County Stormwater Management Ordinance. Permits are digitally tracked in the Kane County – CityView, in addition to a digital copy the County maintains of the permits and plans for Stormwater Permit Applications.</p> <p>The Kane County Department of Environmental &amp; Water Resources continued the process of revising the Stormwater Management Ordinance that began in 2017 by hosting monthly Stormwater Management Planning Committee meetings (see B.3—Stakeholder Meeting). The formal review process was completed in 2019, including review by government agencies and public hearings. The Stormwater Management Ordinance Updates were formally adopted on 6/1/19.</p>

## F. POLLUTION PREVENTION/GOOD HOUSEKEEPING

### 1. BMP F.1—Employee Training Program

<b>MEASURABLE GOALS</b>	<p>Kane County will provide stormwater management training opportunities to County staff as well as other MS4 communities by coordinating a regular “MS4 Corner” e-newsletter, as well as by hosting webcasts. Maintain an email contact list for MS4 community representatives, and distribute the e-newsletter on a</p>
-------------------------	---

	<p>minimum of a quarterly basis. Host stormwater informational webcasts as relevant, tracking the number of trainings provided and the number of attendees.</p>
RESULTS	<p>During the permit year, the Kane County Department of Environmental &amp; Water Resources regularly updated the MS4 contact list. Five issues of the “MS4 Corner” newsletter were created and distributed to the contact list [Distributed on: 9/1/20, 8/3/20, 7/1/20, 6/18/20, and 6/1/20].</p>  <p style="text-align: center;"><i>Example issue of MS4 Corner</i></p> <p>During the permit year, Kane County hosted the following webcasts from the Center for Watershed Protection virtually:</p> <ul style="list-style-type: none"> <li>• <i>Small Scale BMPs</i> [5/20/20; 5 attendees, including 1 Kane County staff]</li> <li>• <i>Water Quality Issues</i> [8/12/20; 3 attendees, including 1 Kane County staff]</li> <li>• <i>IDDE – New Technologies and new techniques</i> [9/16/20]</li> </ul> <p>In addition, Kane County Environmental &amp; Water Resources staff participated in the following training opportunities provided by other entities:</p> <ul style="list-style-type: none"> <li>• Illinois Association of Floodplain &amp; Stormwater Management Annual Conference in Tinley Park, IL [3/11/20-3/12/20; 3 staff attended]</li> <li>• Michigan Floodplain &amp; Stormwater Conference in Ann Arbor, Michigan [3/4/20-3/6/20; Attended by Anne Wilford]</li> <li>• Association of State Floodplain Managers National Conference (held virtually)</li> </ul>



## 2. BMP F.2—Inspection and Maintenance Program

<b>MEASURABLE GOALS</b>	Kane County will continue its established Operation and Maintenance Program – which includes the Department of Transportation clearing roadside swales once a year, and inspecting and cleaning catch basins and storm inlets quarterly. Kane County will also develop and adhere to an annual inspection and maintenance schedule for BMPs installed on County properties, and will utilize available tools to implement a BMP Inventory & Evaluation Program. Inspect and maintain roadside swales, catch basins and storm inlets, and BMPs on County properties according to schedule, documenting pollutant load reduction on an annual basis.
<b>RESULTS</b>	<p>During 2020, the Kane County Department of Transportation swept approximately 90 miles of curbing and 40 bridge decks on a regular seasonal interval.</p> <p>In addition, KDOT cleaned out approximately 250 catch basins on Stearns Road and Randall Road north of Stearns Road.</p> <p>KCDEWR continues to update its BMP Inventory &amp; Evaluation spreadsheet (see section III) to track data for BMPs installed on Kane County owned properties.</p>

## 3. BMP F.4—Municipal Operations Waste Disposal

<b>MEASURABLE GOALS</b>	Kane County will follow established procedures to maintain buildings, fleet vehicles, and equipment. Procedures include the proper disposal of wastes from municipal operations, in compliance with all local, State, and Federal regulations. Kane County departments will continue to recycle all types of used oil, antifreeze, oil filters, tires, batteries, scrap metal, and cardboard. Perform fleet inspections and recycle hazardous materials on an ongoing basis, documenting compliance with the procedures annually.
<b>RESULTS</b>	<p>The Kane County Department of Transportation continues to follow established vehicle maintenance and proper waste disposal procedures, maintaining internal records of these activities using CFA (Computerized Fleet Analysis) Software for fleet tracking.</p> <p>KDOT vehicles are inspected according to the following schedule:</p> <ul style="list-style-type: none"> <li>• Heavy trucks (snow plows, etc.)—every 2000 miles or 180 days</li> <li>• Light trucks and cars—every 5000 miles or 90-180 days</li> <li>• Heavy off-road equipment—every 50 hours or 180 days</li> <li>• Light off-road equipment—every 50 hours or 180 days</li> </ul>

#### 4. BMP F.5—Flood Management/Assessment Guidelines

<b>MEASURABLE GOALS</b>	Kane County will continue to implement the Kane County Hazard Mitigation Program. Host two Hazard Mitigation Committee meetings per year to coordinate ongoing implementation of the plan.
<b>RESULTS</b>	<p>The Kane County Emergency Management Department and Kane County Department of Environmental &amp; Water Resources continue to coordinate the implementation of the <i>Kane County Natural Hazards Mitigation Plan</i>, which was first adopted in 2003 and updated in 2015.</p> <p>During the permit year, Kane County hosted a Hazard Mitigation Committee meetings on:</p> <ul style="list-style-type: none"><li>• October 27, 2020 – Committee’s regular October Meeting (note the April 2020 Meeting was cancelled due to COVID)</li><li>• November 6, 12, 13, 19 – Committee meetings to work on the Updating the Plan (held virtually due to COVID-19)</li><li>• February 5 and 10 –Public and stake holder meeting to discuss the purpose and the planning process for Updating the Plan (held virtually due to COVID-19)</li></ul> <p>In addition, the Kane County Department of Environmental &amp; Water Resources completed 8 cost-share projects to reduce flooding on unincorporated residential properties (property list available upon request).</p>

#### 5. BMP F.6—Other Municipal Operations Controls

<b>MEASURABLE GOALS</b>	Kane County will implement Road Salt Application and Storage procedures to minimize salt washoff into the County’s MS4. Train staff on deicing and salt management procedures on an annual basis. Track the number of training events and participants each year.
<b>RESULTS</b>	<p>The Kane County Department of Transportation provides continual training on salt application and storage procedures via staff manuals, calibrates KDOT trucks to the proper salt dispensing rate, equips each salt truck with a reference table the driver can use to determine the optimal rate of pounds of salt dispensed per lane mile, and stores salt indoors throughout the year to minimize concentrated salt washoff into the MS4.</p> <p>The Kane County Department of Environmental &amp; Water Resources also worked with The Conservation Foundation to host a winter road maintenance training at the Brewster Creek Forest Preserve in St. Charles that was open to all MS4</p>



communities in the region.

- Virtual Deicing Workshops were sponsored by Kane County and other local counties were held on-line through the Conservation Foundation on 10/1/20 and 10/14/20 with 7 registrants from Kane County.



This year the Deicing Workshops are coming to you in a webinar format on the following dates. The two Roads Webinars will have the same content.

**Oct. 1, 2020 Public Roads Deicing Workshop**

**Oct. 8, 2020 Parking Lots & Sidewalks Deicing Workshop**

**Oct. 14, 2020 Public Roads Deicing Workshop**

**All Webinars will be held from 8:00 am—12:00 pm**

Registration information is provided on the next page.

Contact Nancy Cinati 630-428-4500 X120 with questions or to register.  
Fax or email your registration to 630-428-4599 or ncinati@theconservationfoundation.org.

Hosted by the DuPage River Salt Creek Workgroup, Lower Des Plaines Watershed Group,  
Lower DuPage River Watershed Coalition, and The Conservation Foundation

Sponsored by Kane County and others



*Kane County Parking Lots and Sidewalks Deicing Workshop flyer*

### III. RESULTS OF INFORMATION COLLECTED AND ANALYZED

No monitoring data was collected and analyzed during the reporting period. Per Attachment B. of the 2016 Notice of Intent, Kane County has elected to implement a BMP Inventory & Evaluation Program in lieu of monitoring (Note: Kane County continues to participate in the Fox River Study Group, Inc., a non-profit organization who is performing on-going watershed-wide water quality monitoring and modeling to address impairments in the Fox River <https://www.foxriverstudygroup.org/> )

During the permit year, the “MS4 Non-Point Source Control Measure Tracking Tool” provided by the Fox River Study Group was used to calculate annual pollutant load reduction for the following BMPs on Kane County government-owned properties:

## MS4 Non-Point Source Control Measure Tracking Tool

Fox River Watershed, Illinois

MS4	Project Name	Project Cost	Project Type	Total Area Captured (acres)	% Urban High Density	% Low-Medium Density	% Urban Open Space	Area-Weighted UAL (lb/acre/yr)	Load (lb)	Removal Efficiency	Total Load Removed (lb/yr)	Cost per Pound P Removed (\$/lb)
Kane county	KC Govt Center P/CP Parking Lot	\$250,000	Bioretention	0.99	100%	0%	0%	0.98	1.0	65%	0.6	\$398,408
Kane county	KC Govt Center Rain Garden	\$25,000	Bioretention	0.4	75%		25%	0.79	0.3	65%	0.2	\$121,768
Kane county	KC Circuit Court Clerk Parking Lot Bioretention Basins (2)	\$35,000	Bioretention	1.3	95%		5%	0.94	1.2	65%	0.8	\$44,156
Kane county	KDOT Building Expansion Detention Basin	\$25,000	Dry detention	1.1	75%		25%	0.79	0.9	26%	0.2	\$110,698
Kane county	KDOT Storage Yard Detention Basin	\$15,000	Dry detention	3.25	100%			0.98	3.2	26%	0.8	\$18,204
Kane county	KC Judicial Center Pond	\$250,000	Wet detention	250	20%		80%	0.38	95.4	68%	64.9	\$3,854
Kane county	KDOT Detention at Big Timber & Tood Farm Rd in Elgin Twp	\$25,000	Dry detention	27	90%		10%	0.90	24.3	26%	6.3	\$3,953
Kane county	KC Multi-Use Facility Detention Basin	\$430,000	Wet detention	6	75%		25%	0.79	4.7	68%	3.2	\$133,467
Kane county	Stearns Rd Det 09-0009	\$100,000	Wet detention	7.25	40%		60%	0.53	3.8	68%	2.6	\$38,274
Kane county	Stearns Rd Det 09-0010	\$250,000	Wet detention	17.8	40%		60%	0.53	9.4	68%	6.4	\$38,973
Kane county	Stearns Rd Det 09-0011	\$100,000	Dry detention	5.9	30%	30%	40%	0.53	3.1	26%	0.8	\$122,444
Kane county	Stearns Rd Det 09-0012	\$100,000	Wet detention	6.6	30%		70%	0.46	3.0	68%	2.0	\$48,887
Kane county	Stearns Rd Det 09-0013	\$150,000	Wet detention	11.4	40%		60%	0.53	6.0	68%	4.1	\$36,511
Kane county	Stearns Rd Det 09-0014	\$100,000	Wet detention	22.6	40%		60%	0.53	12.0	68%	8.1	\$12,278

An electronic copy of this inventory is available upon request. One new structural BMP was constructed on Kane County government-owned property during this reporting period (Kane County Multi-use Facility).

## IV. SUMMARY OF ANTICIPATED ACTIVITIES DURING NEXT REPORTING CYCLE

During the upcoming permit year, Kane County staff will continue work to implement the LEED for Cities and Communities monitoring and reporting platforms, which include components on water quality, ecosystem health, waste management, and resiliency. This will provide Kane County the opportunity to further articulate efforts being made to improve water quality and the connection of these efforts to other initiatives throughout the County.

## V. RELIANCE ON ANOTHER GOVERNMENTAL ENTITY

Kane County is not relying on another governmental entity to satisfy NPDES permit obligations.

## VI. CONSTRUCTION PROJECT LIST

The following Kane County road construction projects were active during the permit year of March 1, 2020—February 28, 2021:

**List of Kane Co DOT Transportation Projects Under Construction or Completed  
between Mar 2020 -Feb 2021**

Section Number	Project Name
19-00502-01-BT	Kirk Road MUP Improvement
19-00517-00-GR	2020 Guardrail Improvement Project
20-00000-03-GM	2020 Pavement Preservation Patrol
20-00000-04-GM	2020 HMA Crack Sealing Patrol
20-00000-05-GM	2020 Paint Pavement Marking Patrol
20-00000-06-GM	2020 Urethane Pavement Marking Patrol
08-00383-00-BR	Peplow ovr Trib to Virgil Ditch #3
13-00215-30-PV	Longmeadow Parkway IL Rte 25 to IL Rte 62 Section D
18-00215-22-CH	Longmeadow Parkway IL Rte 25 Section C3
18-00495-00-CH	Peck and Britcher Intersection Improvement
14-00437-00-BR	Silver Glen over Virgil Ditch #2
14-00437-00-BR	Burlington over Virgil Ditch #3
14-00441-00-CH	Randall Rd HSIP3
11-00201-04-CH	Kirk Rd and Fabyan Intersection Improvement
15-00342-00-CH	Kirk and Pine- Add Right turn lane
08-00112-00-CH	Huntley and Galligan Intersection Improvement
18-00504-00-BR	Randall over Mill Creek
14-00214-28-CH	Randall Rd at Stearns Rd Intersection Improvement
16-00115-02-BR	Silver Glen ovr Otter Creek
18-00498-00-BR	Scott/Hughes/ Granart Bridge Rehab
19-00521-00-RS	2020 Resurfacing
20-00521-01-RS	2020 Bowes Rd Resurfacing
19-00215-24-PV	LMP C2 Tree Removal
16-00176-03-BR	Randall Over Tyler Creek Repairs
14-00446-00-CH	Randall at Weld Intersection Improvement
16-00477-00-SP	Kirk Rd-56 to Cherry HSIP
17-00479-00-BR	Fabyan Bridge over Fox River Rehab
13-00215-20-BR	Longmeadow Parkway- IL Rte 31 to Sandbloom Rd- Section C-1
18-00497-00-CH	Burlington at Bolcum Intersection Improvement