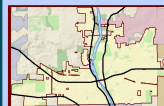
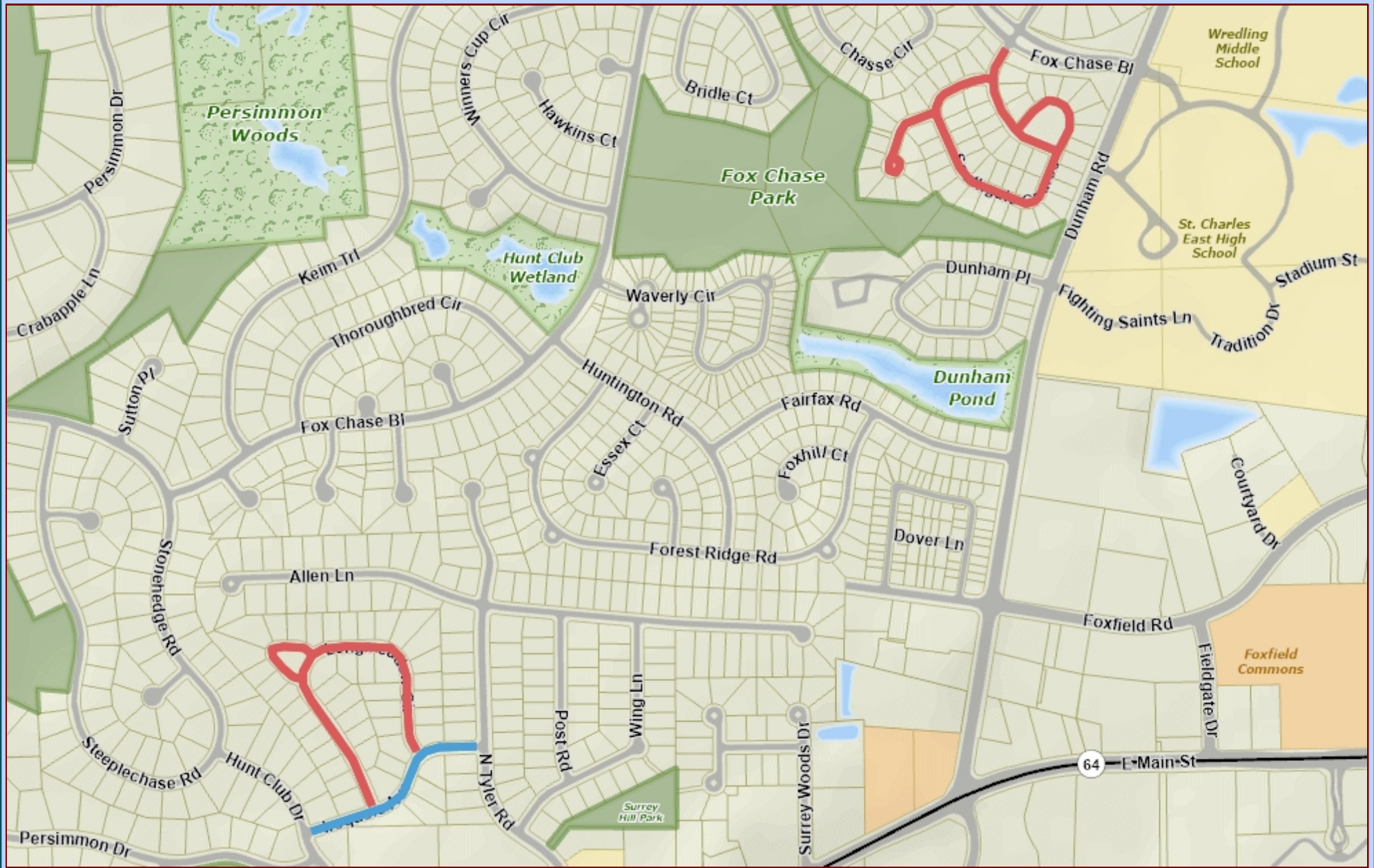




Southgate, Longmeadow, Iroquois Road Work



Data Source:
 City of St. Charles, Illinois
 Kane County, Illinois
 DuPage County, Illinois
 Projection: Transverse Mercator
 Coordinate System: Illinois State Plane East
 North American Datum 1983
 Printed on: May 22, 2026 10:19 AM



— Base Reclamation
 — Conventional Resurfacing

This work was created for planning purposes only and is provided as is, without warranty of any kind, either expressed or implied. The information represented may contain proprietary and confidential property of the City of St. Charles, Illinois. Under United States Copyright protection laws you may not use, reproduce, or distribute any part of this document without prior written permission. To obtain written permission please contact the City of St. Charles at Two East Main Street, St. Charles, IL 60174.
 Powered by InRoads GIS