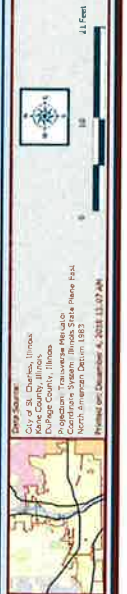




RAYMOND ROGINA Mayor
MARK KOENEN City Administrator



CITY HALL SOUTH CHECKERBOARD LOT BEDS (AREA 1)











Precision GIS

RAYMOND ROGINA *Mayor*
MARK KOENEN *City Administrator*



CITY HALL NORTH LOT BEDS (AREA 1)

City of St. Charles, Illinois;
Kane County, Illinois;
Dauphin County, Illinois;
Physician: Traversette Melcaro
Coordinate System: Illinois State Plane East
North American Datum 1983
Printed on: December 4, 2013 11:11 AM



Age Group	Option A (%)	Option B (%)	Option C (%)	Option D (%)
18-24	~85	~10	~3	~2
25-34	~75	~15	~5	~5
35-44	~65	~20	~10	~5
45-54	~55	~25	~15	~5
55-64	~45	~30	~20	~5
65+	~35	~35	~25	~5

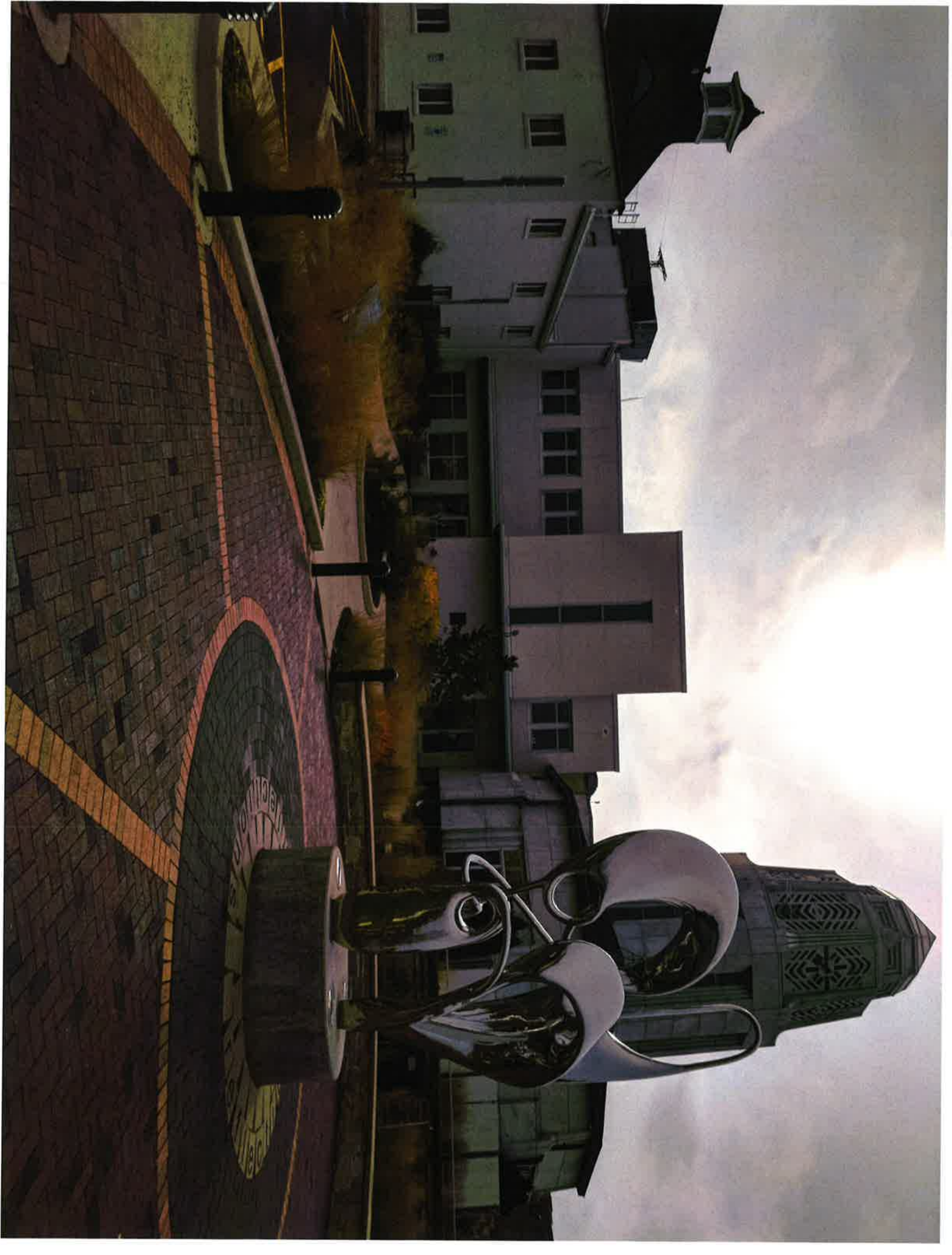
[illegible]















Precision GIS

RAYMOND ROGINA *Mayor*
MARK KOENEN *City Administrator*



POLICE STATION /FREEDOM SHRINE BEDS & SHRUBS (AREA 2)

Class Location:
City of St. Charles, Illinois
Kane County, Illinois
DuPage County, Illinois
Piquette, Transwarp, Perforce
Coordinate System: Illinois State Plane East
North American Datum 1983

[illegible]











City of St. Charles, Illinois
Two East Main Street, St. Charles, IL 60124-1981
Phone: 630.377.4400 Fax: 630.377.4440 www.stcharles.il.gov

Precision GIS

RAYMOND ROGINA Mayor
MARK KOENEN City Administrator



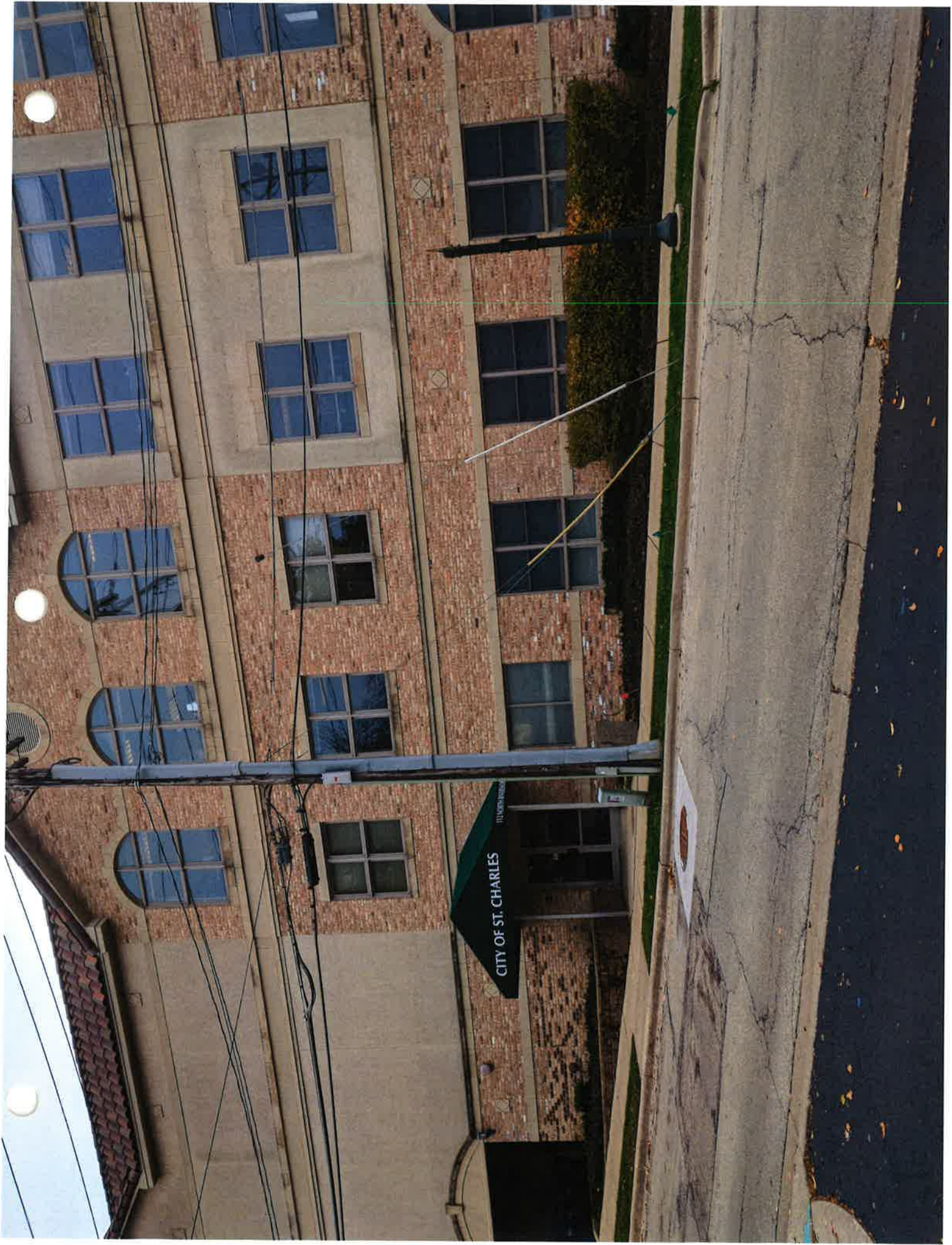
City of St. Charles, Illinois
City of St. Charles, Illinois
DuPage County, Illinois
Projection: Transverse Mercator
Datum: North American Datum 1983
Units: Feet
Scale: 1 inch = 400 feet
Printed on: December 4, 2018 11:27 AM



0 40 Feet

CENTURY STATION-FIRESTATION I BEDS & SHRUBS (AREA 3)

This map was created for the City of St. Charles, Illinois, and is provided as a public information tool. It is not intended to be used for legal purposes. The information represented on this map is derived from various sources, including aerial photography, ground surveys, and other data. The City of St. Charles, Illinois, and its employees, officers, and agents, shall not be liable for any errors or omissions in this document without prior written permission. Copyright © 2018 by Precision GIS.

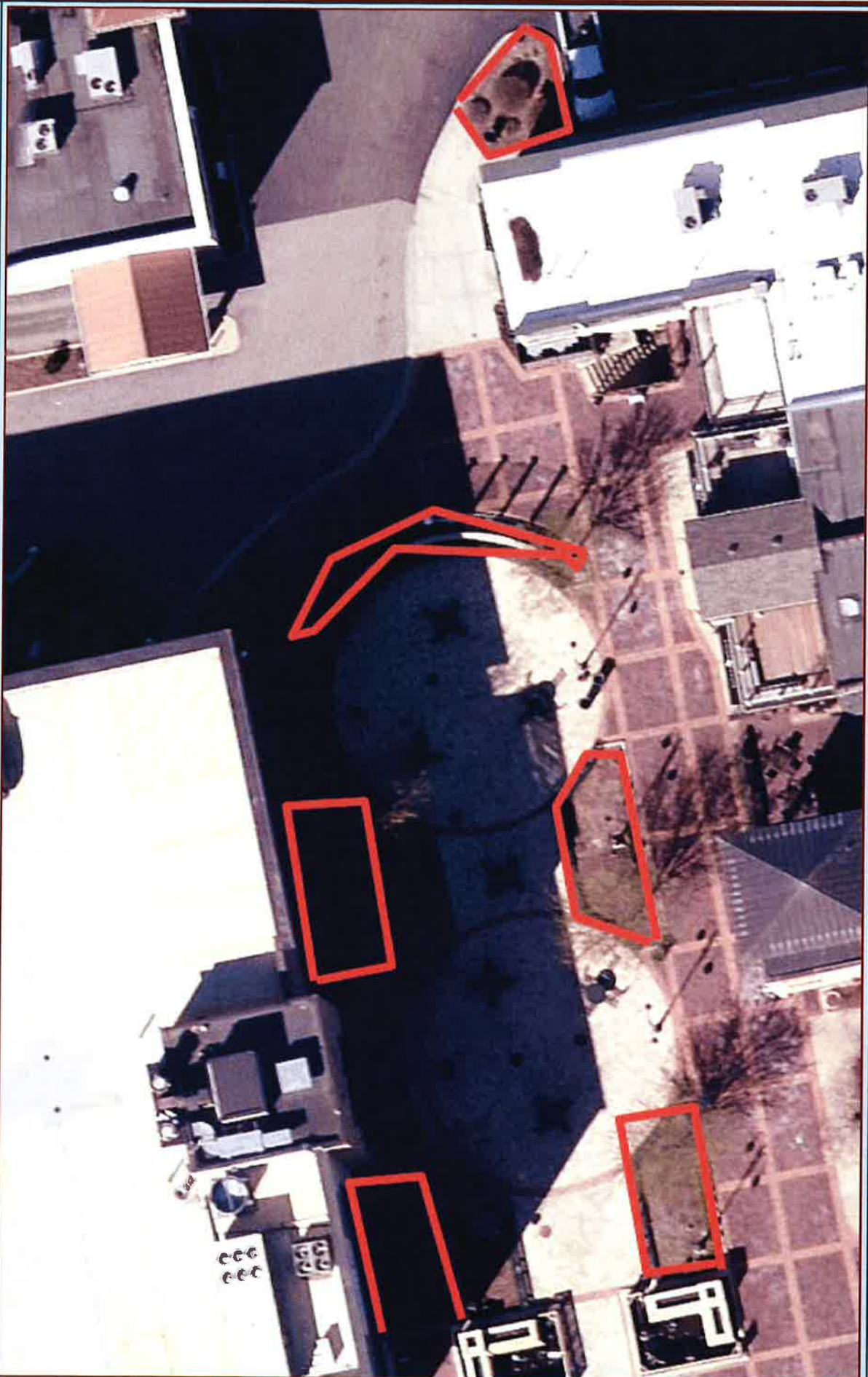






Precision GIS

RAYMOND ROGINA Mayor
MARK KOENEN City Administrator



1ST STREET PLAZA & SMALLCAKES BEDS (AREA 4)



Data Source:
City of St. Charles, Illinois
Stacy County, Illinois
Cottage Country, Illinois
Project: Transition Project
Corporate Support Services from Private Equity
North American Region 1987

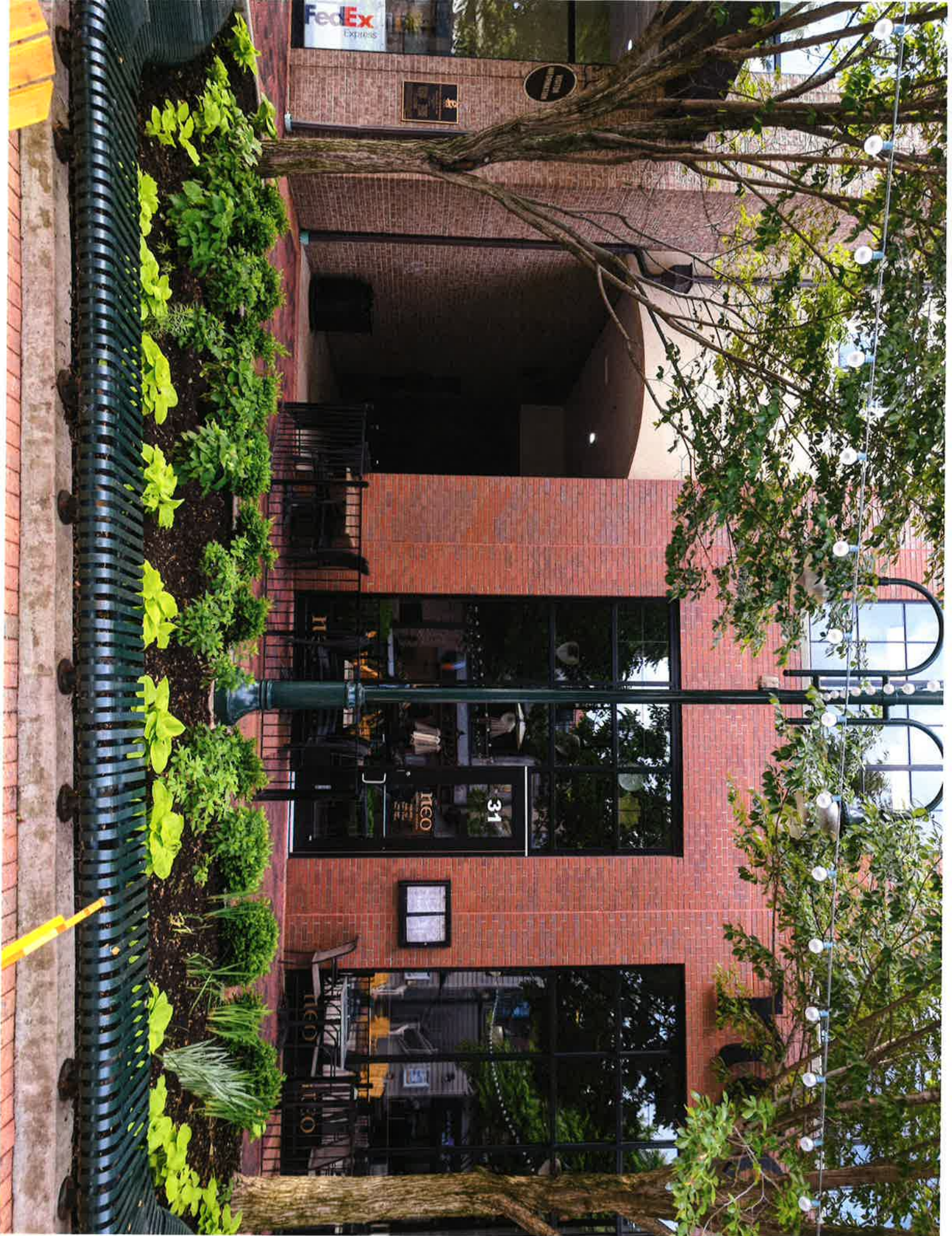
Publication Date: May 2018 11:40 AM

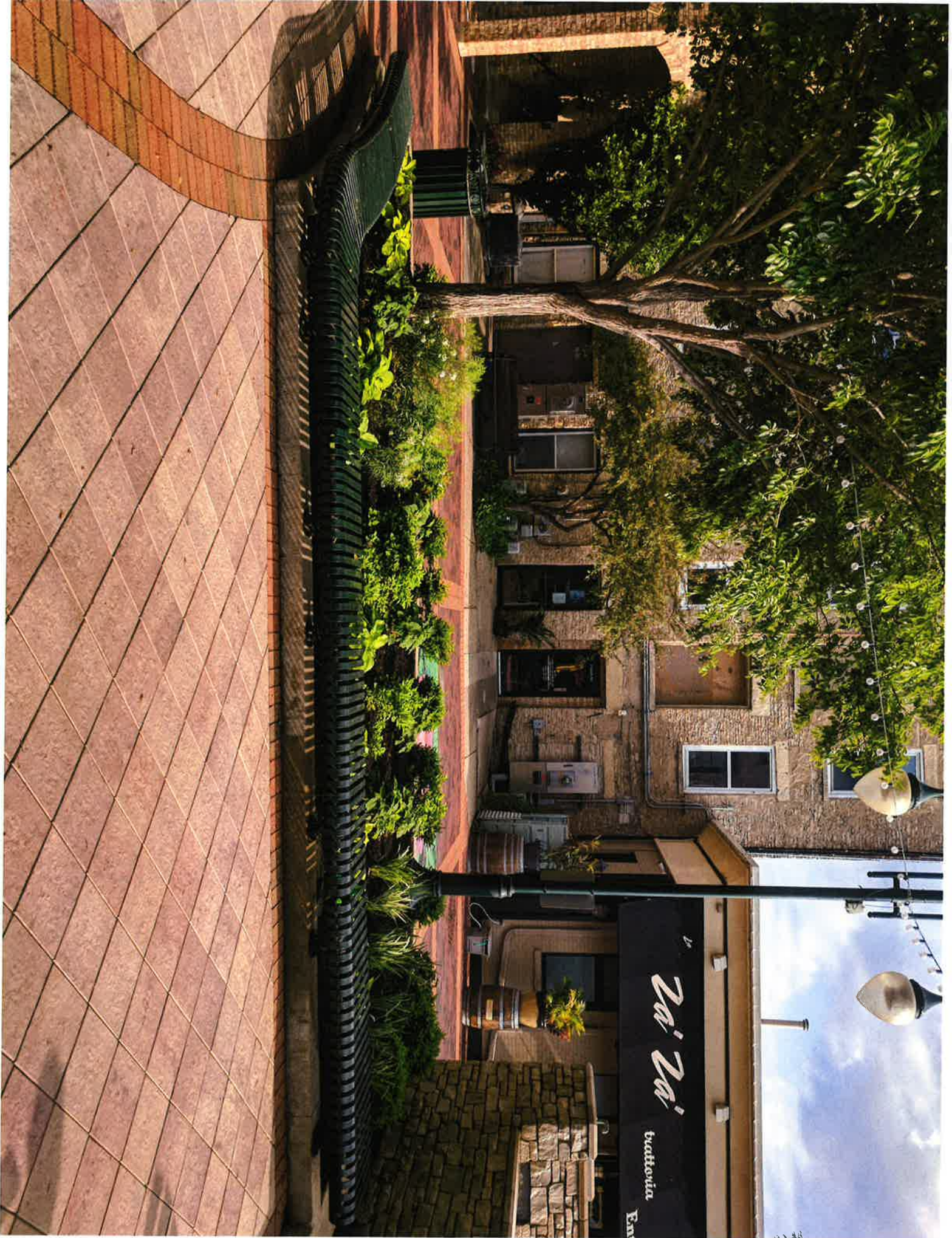


21 Feb

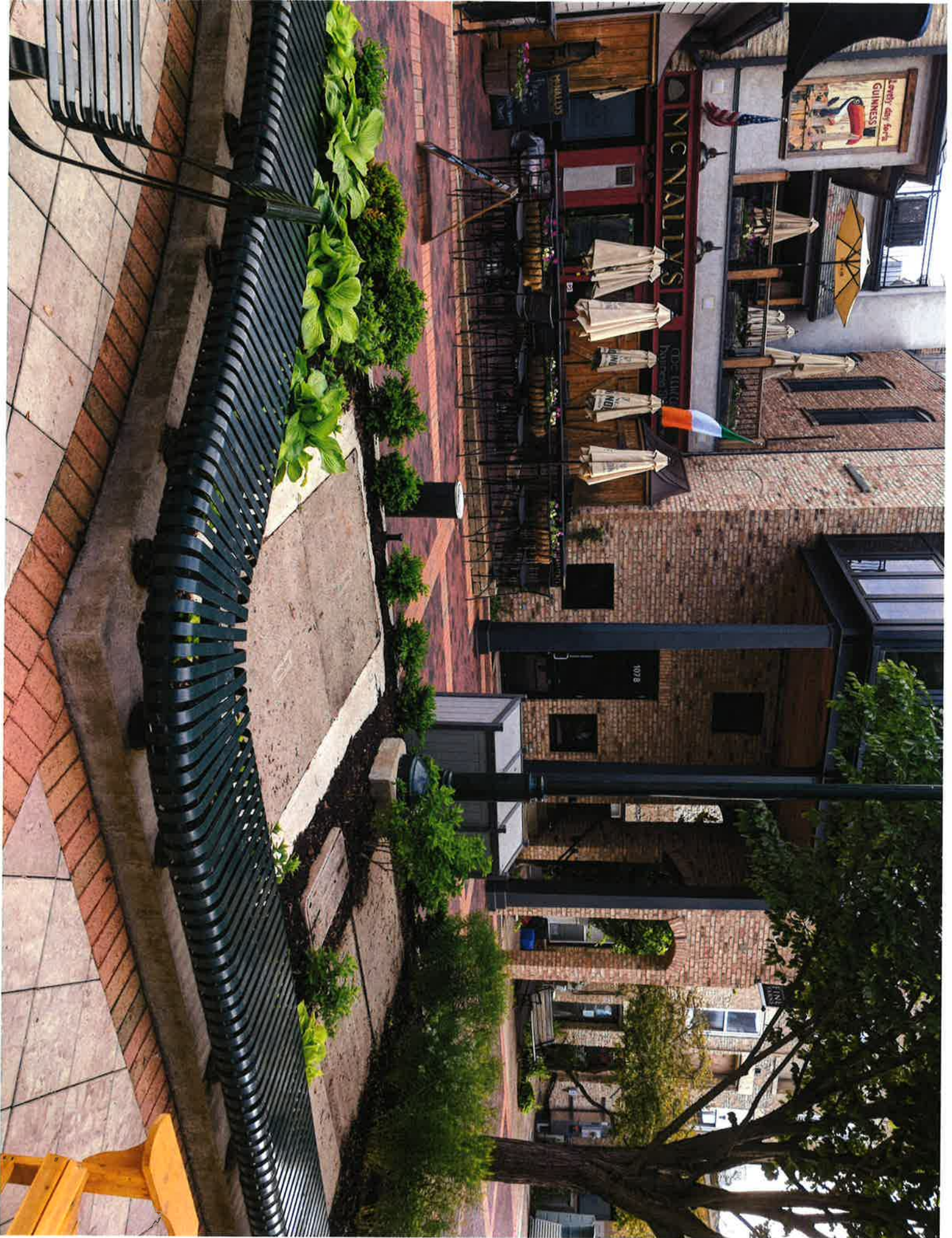
[illegible]













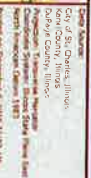


Precision GIS

RAYMOND ROGINA *Mayor*
MARK KOENEN *City Administrator*



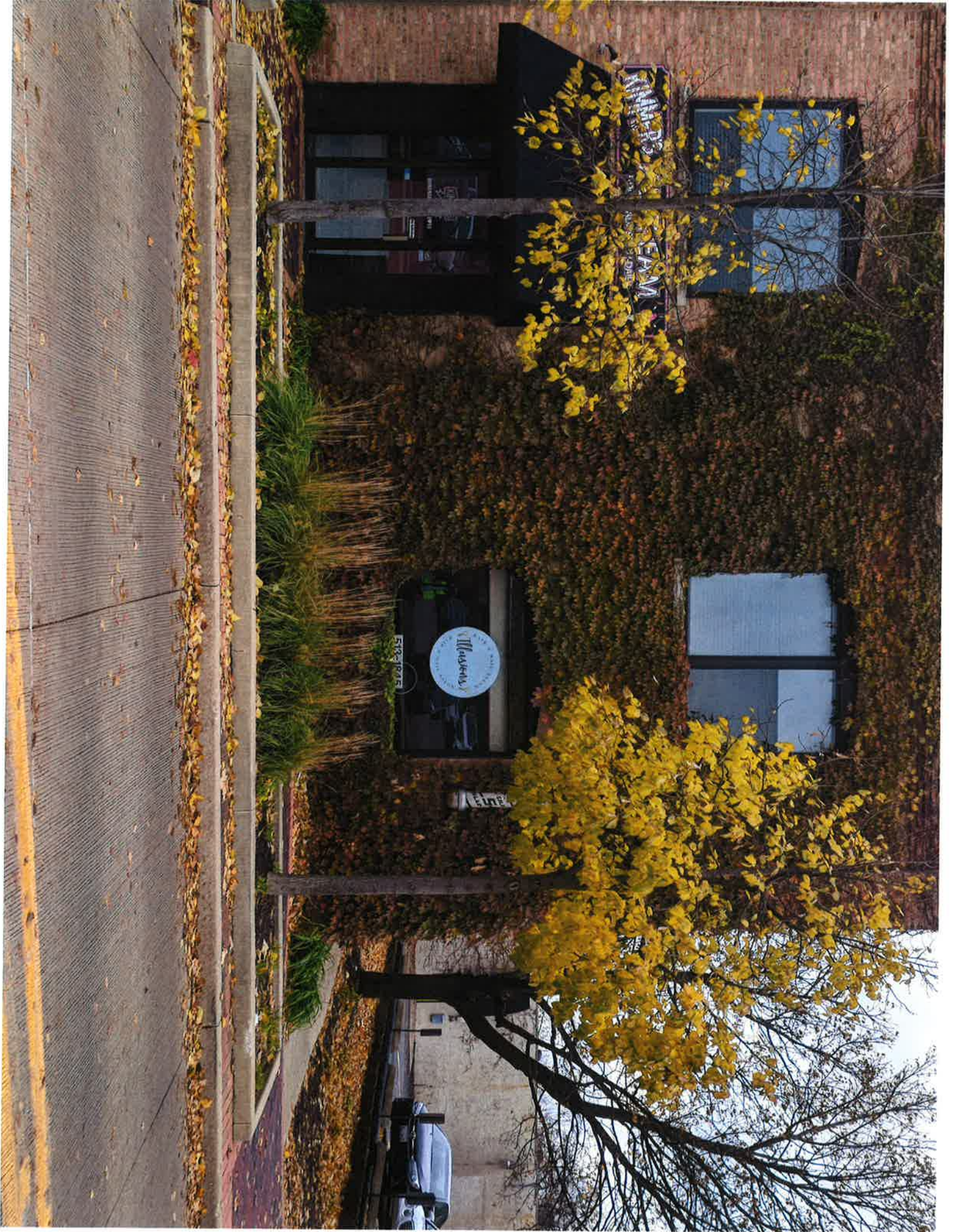
1ST STREET RAISED PLANTERS & BEDS (AREA 5)

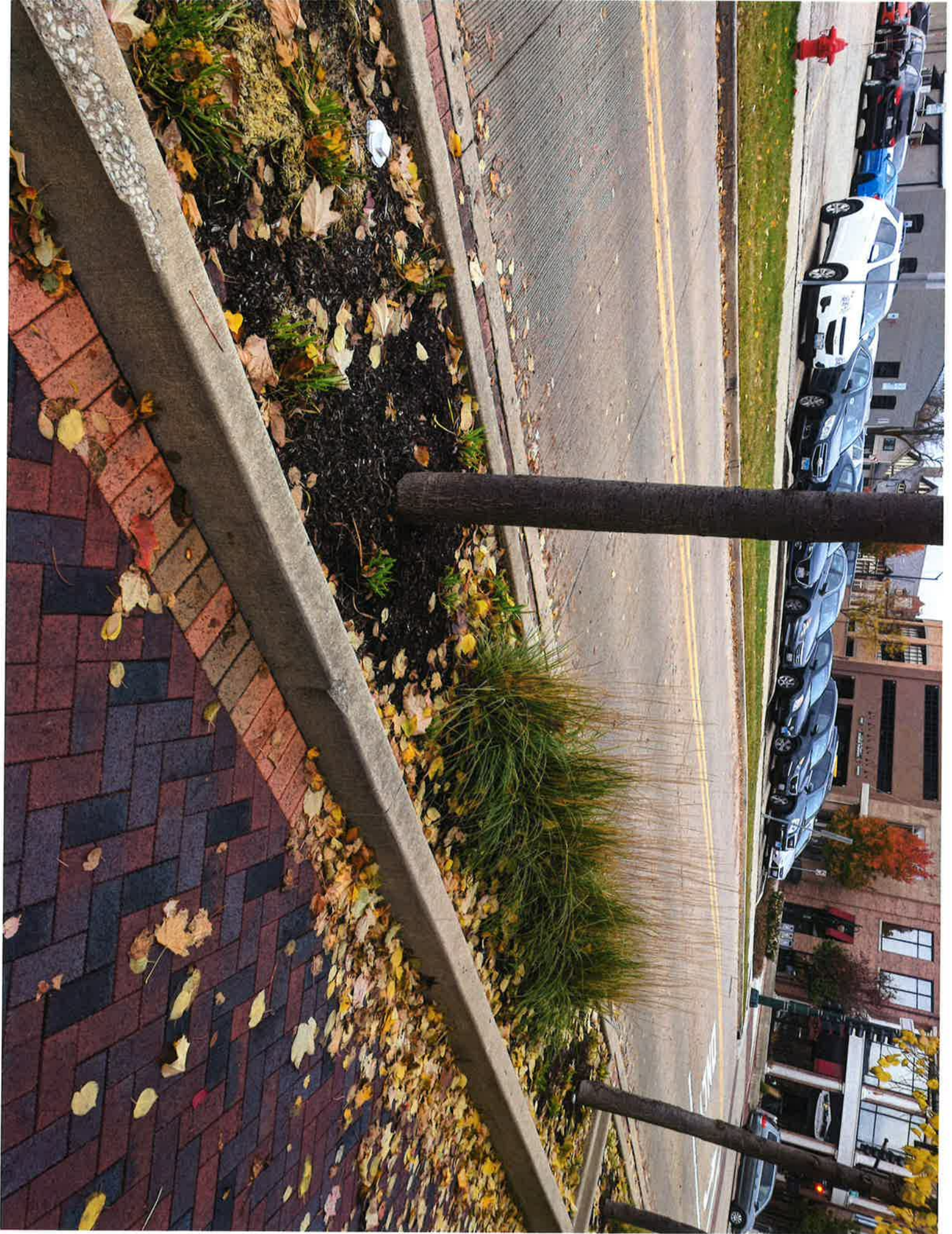


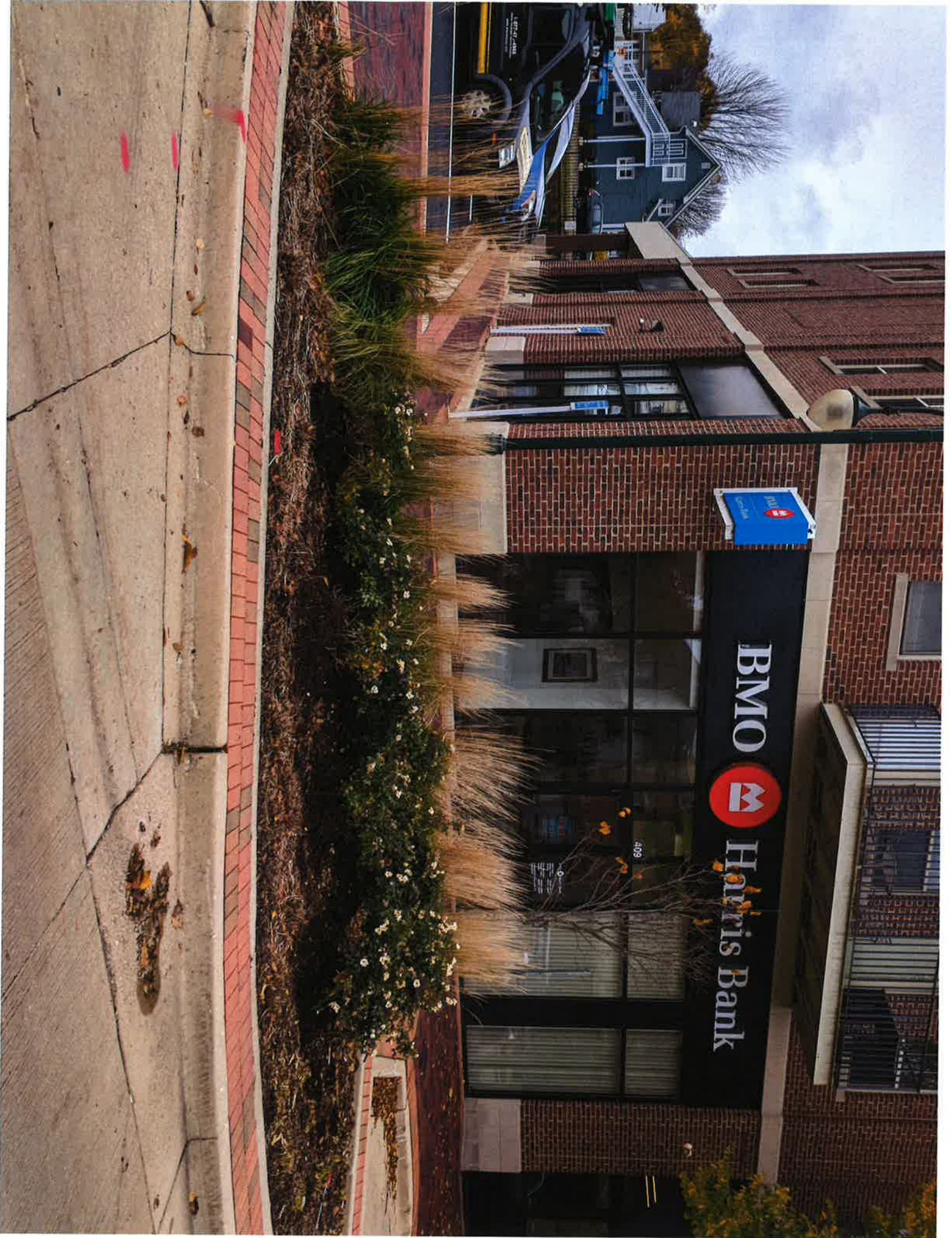
0.1 1.0 10.0

This work was insured for shipping purposes only and is provided as is, without warranty of any kind, either expressed or implied. The information represented may contain proprietary and intellectual property of the City of St. Charles, Illinois. Under Illinois State Copyright Protection, this work may not be used, reproduced, or distributed in any part of this document without prior written permission to obtain further permission please contact the City of St. Charles at Two East Main Street, St. Charles, IL 60118.











Precision GIS

RAYMOND ROGINA
Mayor

MARK KOENEN
City Administrator



STERLING BANK BEDS (AREA 6)

Don Woods
City of St. Charles, Illinois
Kane County, Illinois
DuPage County, Illinois
Proportion Township, Illinois
Coordinate System, Illinois State Plane East
North American Datum 1983



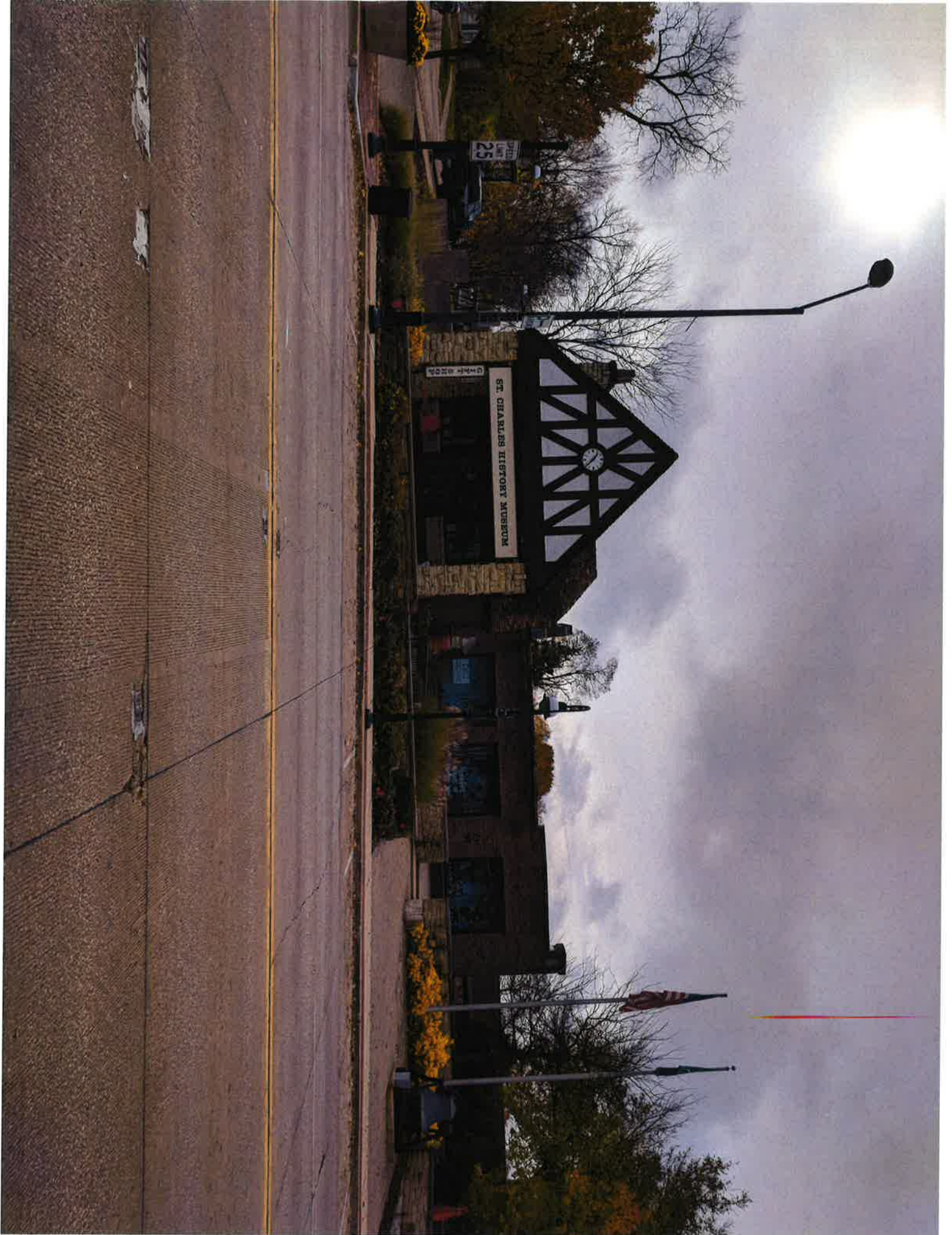
10

1000

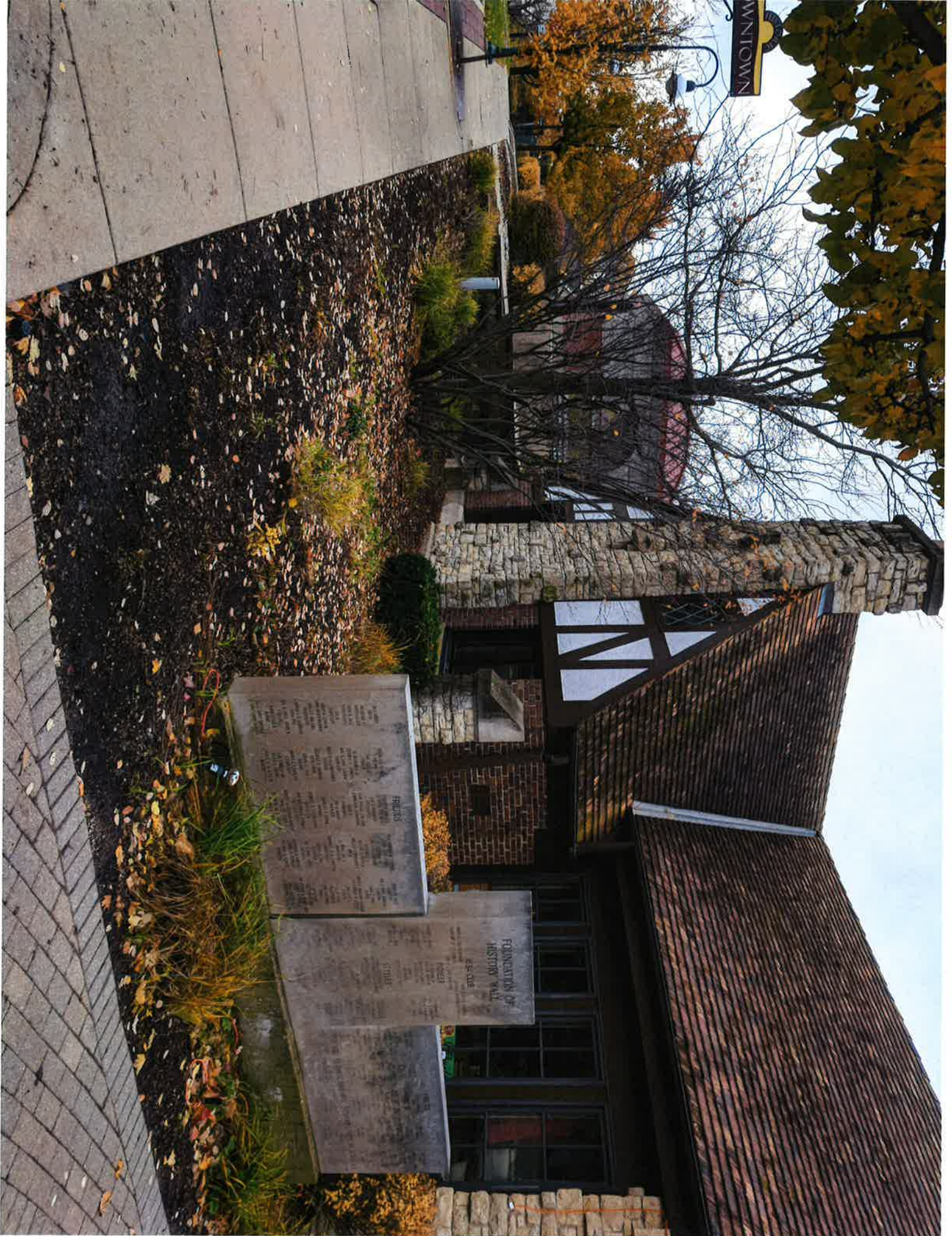
[illegible]













City of St. Charles, Illinois
Two East Main Street St. Charles, IL 60171-1981
Phone: (630) 377-1400 Fax: (630) 377-1440 - www.stcharles.il.gov

Precision GIS

RAYMOND ROGINA *Mayor*
MARK KOENEN *City Administrator*



This map is intended to provide information only and is not a legal document. It is not to be used as a legal document. The information represented on this map is for informational purposes only and is not to be used as a legal document. The information represented on this map is for informational purposes only and is not to be used as a legal document. The information represented on this map is for informational purposes only and is not to be used as a legal document.

EAST SIDE PARKING DECK COMPLEX (AREA 8)











Precision GIS

RAYMOND ROGINA *Mayor*
MARK KOENEN *City Administrator*



ILLINOIS AVENUE/RIVERSIDE AVENUE BEDS (CITY LOT B - AREA 9)



Don Starnes
City of St. Charles, Illinois
Kane County, Illinois
D'Argo County, Illinois
Procter & Gamble
Corporate System, Illinois State
Natl. American Dairies, Inc.

[illegible]











City of St. Charles, Illinois
Two East Main Street St. Charles, IL 60174-1981
Phone: 630-577-4400 Fax: 630-577-4440 - www.stcharles.il.gov

Precision GIS

RAYMOND ROGINA Mayor
MARK KOENEN City Administrator



Scale: 1:1000
City of St. Charles, Illinois
Geographic Information System
Projection: Transverse Mercator
Datum: North American Datum of 1983
Units: Feet
Printed on September 1, 2010 10:13 AM



0 25 40 Feet

AVENUE TWO LOT (CITY LOT K - AREA 10)

This map was created for planning purposes only and is not intended to be used for legal purposes. It is not a warranty of any kind, and the City of St. Charles is not responsible for any errors or omissions. The City of St. Charles is not responsible for any damages or losses resulting from the use of this map. The City of St. Charles is not responsible for any damages or losses resulting from the use of this map. The City of St. Charles is not responsible for any damages or losses resulting from the use of this map.



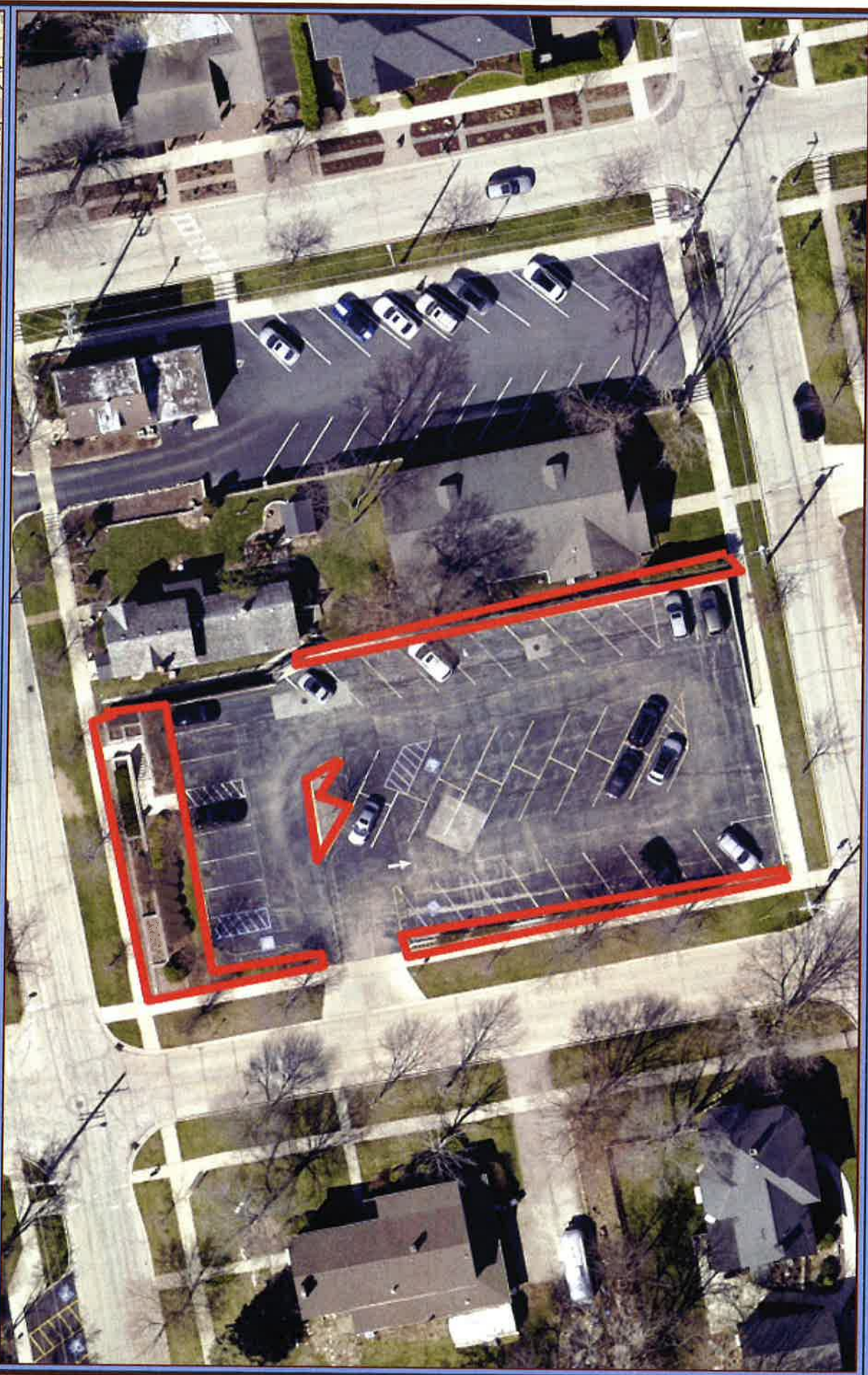




City of St. Charles, Illinois
Two East Main Street, St. Charles, IL 60174-1084
Phone: (630) 377-4400 Fax: (630) 377-4440 - www.stcharles.il.gov

Precision GIS

RAYMOND ROGINA Mayor
MARK KOENEN City Administrator



CEDAR AVENUE/3RD AVENUE LOT BEDS (CITY LOT N - AREA 11)

City of St. Charles, Illinois
Precision GIS
Copyright © 2011 by the City of St. Charles, Illinois
All rights reserved. No part of this publication may be reproduced, stored in a retrieval system, or transmitted, in any form or by any means, electronic, mechanical, photocopying, recording, or by any information storage and retrieval system, without prior written permission from the City of St. Charles, Illinois.

City of St. Charles, Illinois
Precision GIS
Copyright © 2011 by the City of St. Charles, Illinois
All rights reserved. No part of this publication may be reproduced, stored in a retrieval system, or transmitted, in any form or by any means, electronic, mechanical, photocopying, recording, or by any information storage and retrieval system, without prior written permission from the City of St. Charles, Illinois.

This map was created by Precision GIS and is provided as a service to the City of St. Charles. It is not intended to be used for legal purposes. The City of St. Charles is not responsible for any errors or omissions in this map. The City of St. Charles is not responsible for any damages or losses resulting from the use of this map. The City of St. Charles is not responsible for any claims or lawsuits filed against the City of St. Charles or its officials or employees. The City of St. Charles is not responsible for any claims or lawsuits filed against the City of St. Charles or its officials or employees.







Precision GIS

RAYMOND ROGINA *Mayor*
MARK KOENTEN *City Administrator*



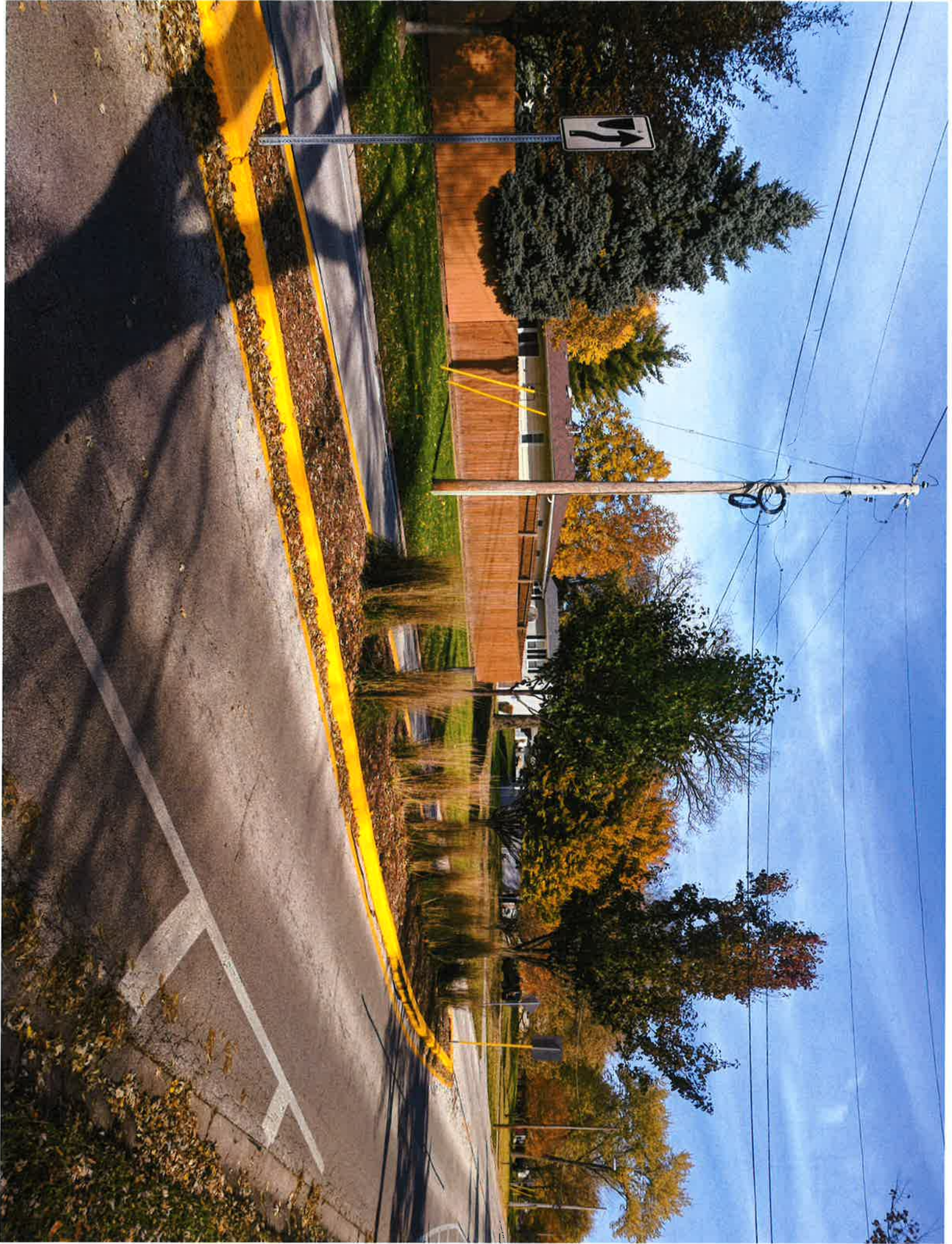
Data Source:
City of St. Charles, Illinois
Kane County, Illinois
DuPage County, Illinois
Institution: Township of St. Charles
Cooperative System, Illinois State Water Survey
North American Datum 1983
Printed in: Des Moines, IA, 2005 05/02 AM



03 Feb 2004

MADISON AVENUE ISLANDS (AREA 12)

[illegible]





Precision GIS

RAYMOND ROGINA Mayor
MARK KOENIG City Administrator



3RD STREET/WALNUT STREET LOT (CITY LOT R - AREA 13)



PAGE SEVEN

City of St. Charles, Illinois
Kane County, Illinois
DeWitt County, Illinois
Illinois Department of Transportation
Illinois State Police East
North American Datum, 1983



Other

This work was funded for planning purposes only and is provided as is, without warranty of any kind, either expressed or implied. The information represented may contain proprietary and confidential property of the City of St. Catharines, Ontario, Canada. United States Copyright protection laws may apply to this information. It is strictly prohibited to copy, reuse, or disseminate this information without written permission. To obtain written permission please contact the City of St. Catharines at: 100 First Main Street, St. Catharines, L2R 1K4







City of St. Charles, Illinois

Two East Main Street, St. Charles, IL 60174-1081

Phone: (630) 377-4400 Fax: (630) 377-4440 www.stcharles.il.us

Precision GIS

RAYMOND ROGINA Mayor

MARK KOENEN City Administrator



ROUTE 31/STATE STREET/CEDAR STREET LOT (CITY LOT G - AREA 14)



City of St. Charles, Illinois
Precision GIS
Two East Main Street, St. Charles, IL 60174-1081
Phone: (630) 377-4400 Fax: (630) 377-4440 www.stcharles.il.us



0.1 mi

This map was prepared for the City of St. Charles, Illinois, and is provided as a public service. It is not intended to be used for any other purpose. The City of St. Charles is not responsible for any errors or omissions in this map. The City of St. Charles is not responsible for any damages or losses resulting from the use of this map. The City of St. Charles is not responsible for any claims or lawsuits filed against the City of St. Charles. The City of St. Charles is not responsible for any claims or lawsuits filed against the City of St. Charles. The City of St. Charles is not responsible for any claims or lawsuits filed against the City of St. Charles.







Precision GIS

RAYMOND ROGINA Mayor
MARK KOENEN City Administrator



ROUTE 31/STATE STREET WIND EMOTIONS BED (CITY LOT H - AREA 15)



Projection: Transverse Mercator
Coordinate System: Illinois State Plane East
North American Datum 1983



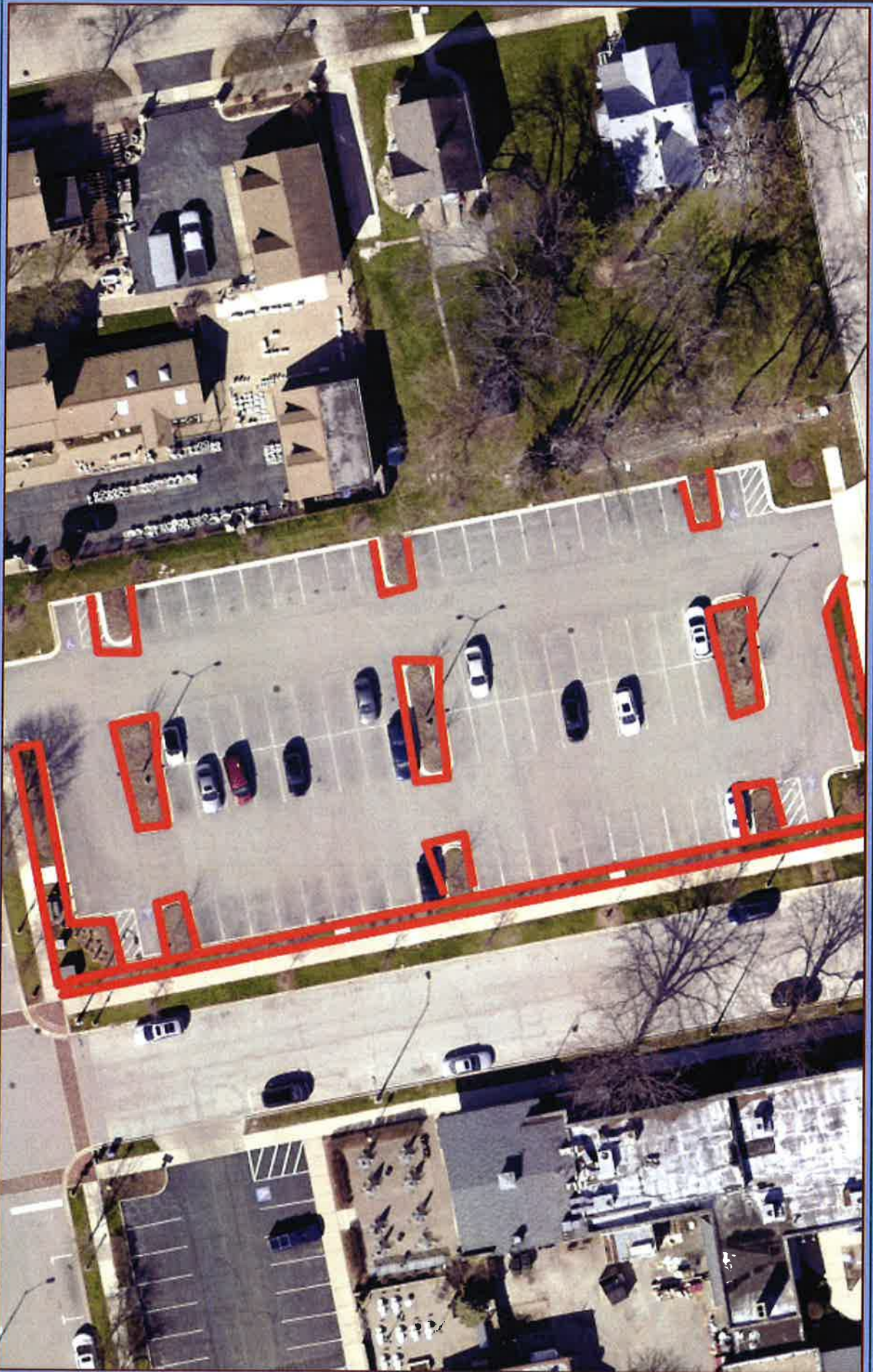
The work was unusual for Stepping Outdoors, only that it included the use of a vehicle, carrying of gear, travel, expense, and a degree of physical exertion. The education component was not a primary focus, and the educational aspect of the work was limited to the distribution of informational materials. The work was also unusual in that it was a joint effort between Stepping Outdoors and the City of St. Charles, Illinois, United States. Carrying out the work was unusual in that it was a joint effort between Stepping Outdoors and the City of St. Charles, Illinois, United States. Carrying out the work was unusual in that it was a joint effort between Stepping Outdoors and the City of St. Charles, Illinois, United States.





Precision GIS

RAYMOND ROGINA *Mayer*
MARK KOENEN *City Administrator*



3RD STREET/CEDAR STREET OLD VFW LOT (CITY LOT 0 - AREA 16)



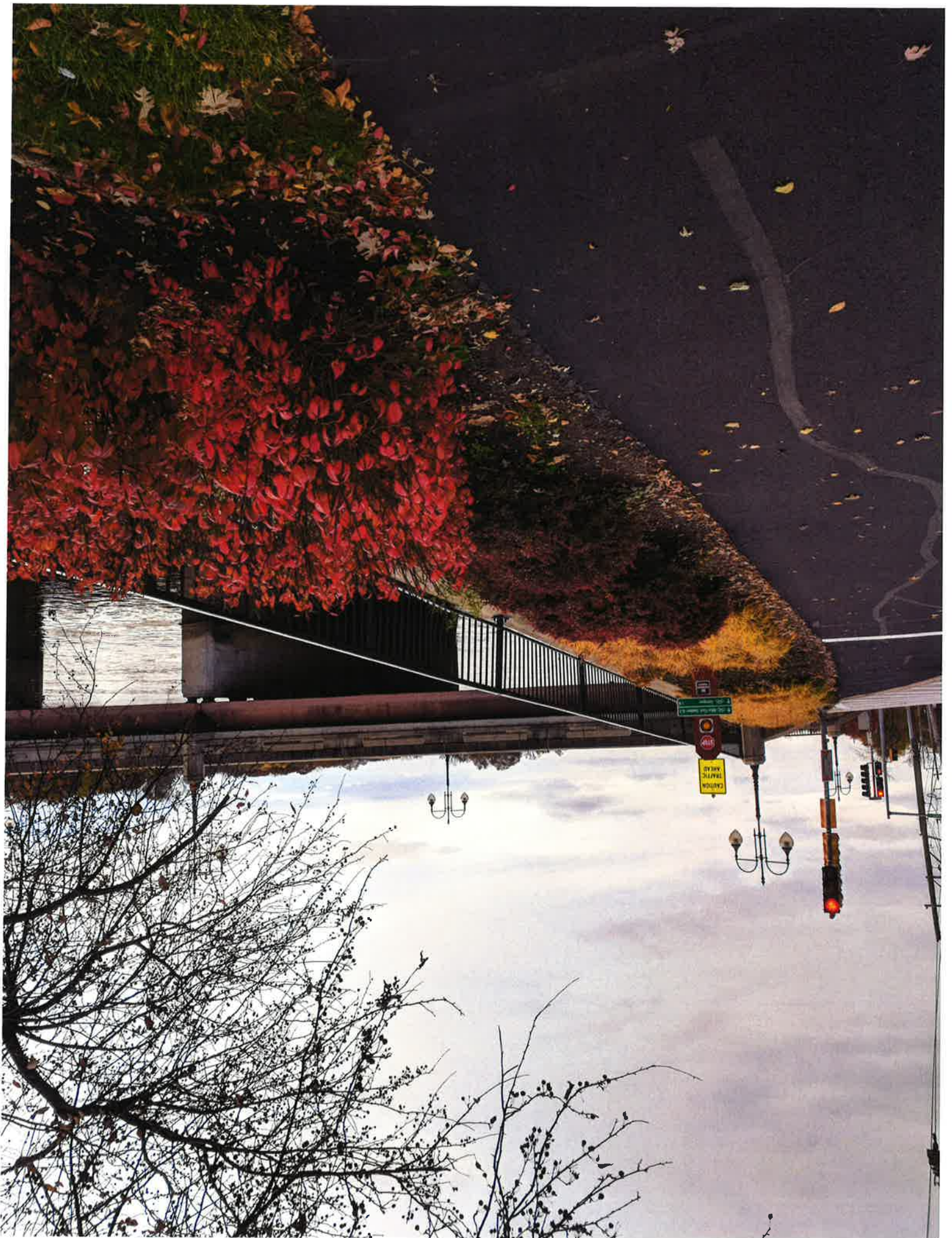
CHAS. BOWEN
City of St. Charles, Illinois
Knox County, Illinois
Columbia County, Illinois
Inspector, Veterans' Pension
Coordinate System, Illinois State
North American Datum 1983



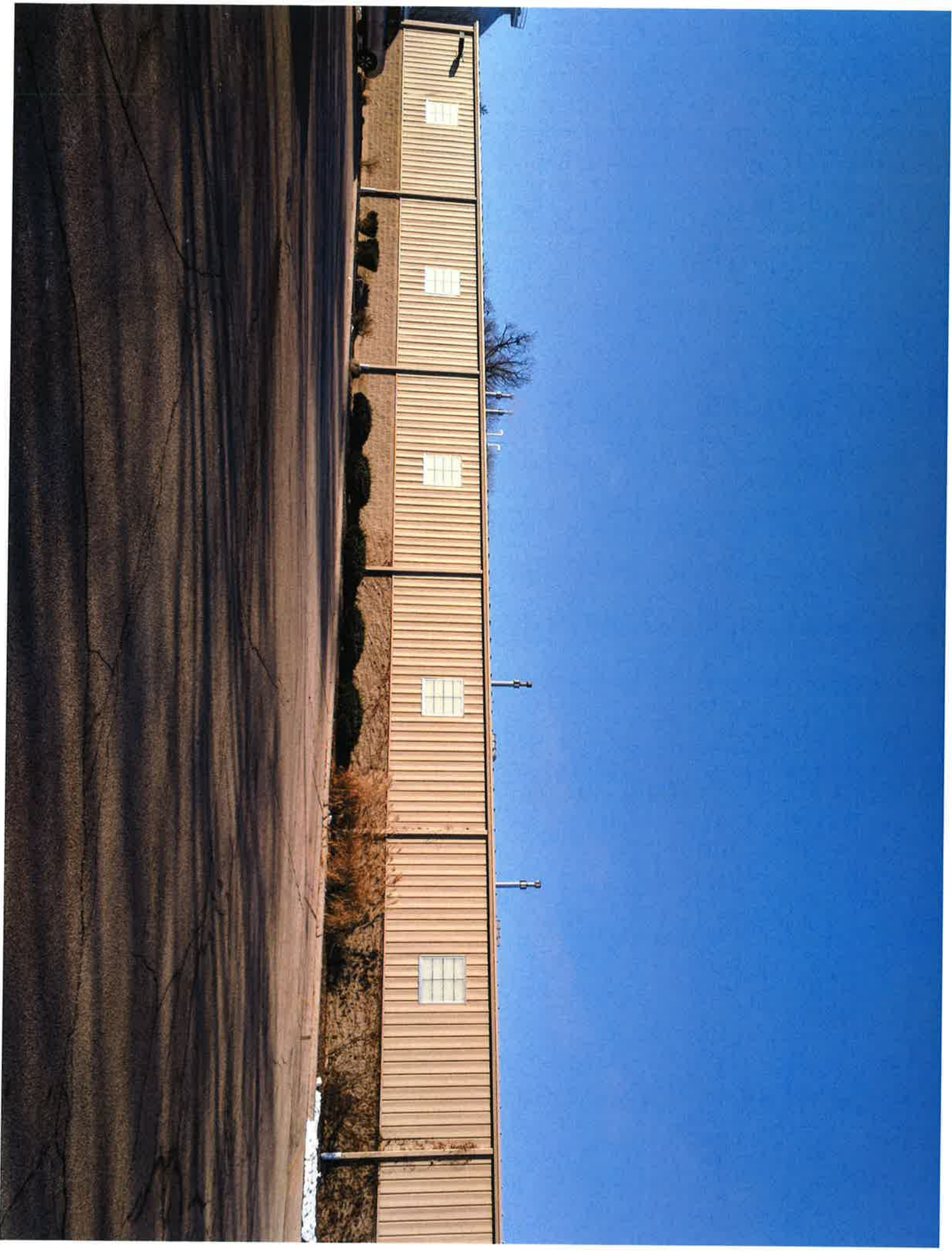
The work was directed for planning purposes only and is not intended to be used as a basis for any legal action or litigation or to be used as a basis for any legal action or litigation or to be used as a basis for any legal action or litigation.













Precision GIS

RAYMOND ROJINA Mayor
MARK KOENEN City Administrator



CITY PUBLIC WORKS COMPLEX ENTRANCE PILLAR BEDS (4) - (AREA 19)

City of St. Charles, Missouri
Mississippi River
St. Charles, Missouri
Mississippi River



167

[illegible]





Precision GIS

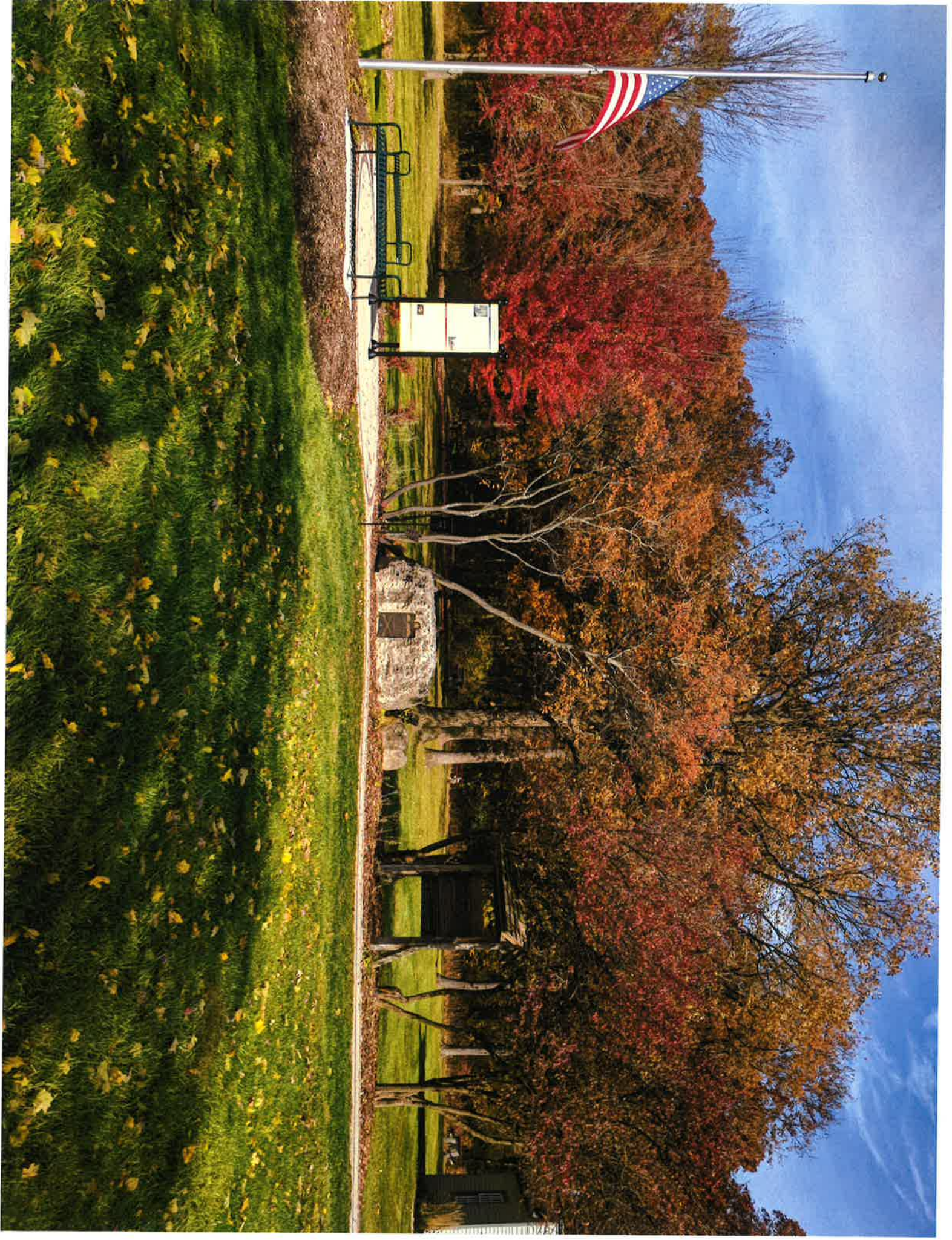
RAYMOND ROGINA Mayor
MARK KOENEN City Administrator



CITY PUBLIC WORKS COMPLEX JONES LAW OFFICE BEDS (AREA 20)

[illegible][illegible]







Precision GIS

RAYMOND ROGINA Mayor
MARK KOENIG City Administrator



RIVERSIDE AVENUE/DIVISION STREET MONUMENT BED (AREA 21)



10 Feet

This work was created for planning purposes only and is provided as is, without warranty of any kind, either expressed or implied. The information represented may contain proprietary and confidential property of the City of Cincinnati, Ohio. Under United States Copyright protection laws you may not sell, reproduce, or distribute any part of this document without prior written permission. For additional information, please contact the City of Cincinnati at 513-263-1000.





Precision GIS

RAYMOND ROGINA *Mayor*
MARK KOENEN *City Administrator*



NORTH ROUTE 31 GATEWAY MONUMENT BED (AREA 23)



Data Source:
City of St. Charles, Illinois
Saint Charles, Illinois
Culinary County, Illinois
Producers: International Harvester
Cooperative System, Illinois State Farm
North American, Illinois
Published on December 11, 2018 07:02 AM



20 Four

This suit was filed by attorney Stephen Orr and is pending in U.S. District Court in New York. The complaint is captioned "The American People of New York City v. Donald Trump, Inc. and Donald Trump, President of the United States." Orr says the suit alleges a conspiracy to defraud the American people of their money and property. Orr says the suit also alleges a conspiracy to defraud the American people of their right to a fair and honest election. Orr says the suit also alleges a conspiracy to defraud the American people of their right to a fair and honest government. Orr says the suit also alleges a conspiracy to defraud the American people of their right to a fair and honest society. Orr says the suit also alleges a conspiracy to defraud the American people of their right to a fair and honest world. Orr says the suit also alleges a conspiracy to defraud the American people of their right to a fair and honest universe. Orr says the suit also alleges a conspiracy to defraud the American people of their right to a fair and honest everything.





Precision GIS

RAYMOND ROGINA *Mayor*
MARK KOENEN *City Administrator*



DATA SOURCE:
City of St. Charles, Illinois
Kane County, Illinois
DeWitt County, Illinois
Preparation: Transverse Mercator
Coordinate System: Illinois State Plane East
North American Datum 1983

Published on December 11, 2014 08:23 AM



667 Feng

RANDALL ROAD MEDIANS (2) - (AREA 24)

This story was created by gathering portions only and provided as is, without warranty of any kind, express or implied. The information represents opinion, privacy and confidential property of the City of Chicago, Illinois, United States Copyright © 2013. No part of this document may be used, reproduced, distributed, or transmitted in any form or by any means, electronic, mechanical, photocopying, recording, or by any information storage and retrieval system, without the written permission of the City of Chicago. All rights reserved. City of Chicago, IL 60611







Two East Main Street St. Charles, IL 60174-1984
Phone: 630-377-4400 Fax: 630-377-4440 • www.stcharlesil.gov

Precision GIS

RAYMOND ROGINA Mayor
MARK KOENEN City Administrator



WESTSIDE TREATMENT PLANT (AREA 25)

City of St. Charles, Illinois
Kane County, Illinois
DuPage County, Illinois
Projection: Transverse Mercator
Coordinate System: Illinois State Plane East
North American Datum 1983

The book was intended for students, parents, city and state officials, as well as the general public. It was not intended to be published as a technical survey of any law, which would be expected to require the attention of the legal profession or anyone with a professional interest in the subject. The book was intended to be published as a general survey of the law, which would be expected to require the attention of the general public.





Precision GIS

RAYMOND ROGINA *Mayor*
MARK KOENEN *City Administrator*



FIRESTATION III (AREA 26)

	<p>Data Source: City of St. Catharines, Ontario King County, British Columbia, Canada College County, Illinois Aviation: Transportes Aereos Canada System: British North American Airlines 1982</p>
--	--

The work was created by planning, designing, writing and producing it, without assistance of any kind, with or without compensation. The information represented herein is confidential and the ownership, copyright and other proprietary and exclusive property of the City of Chicago, Illinois. Under United States Copyright protection laws you may not use, reproduce or distribute any part of this document without prior written permission. If you wish to use any part of this document, please contact the City of Chicago at One East Madison Street, 5th Floor, Chicago, IL 60602.





Precision GIS

RAYMOND ROGINA *Mayor*
MARK KOENEN *City Administrator*



FIRESTATION II (AREA 27)

CITY OF ST. CHARLES, ILLINOIS
State County, Illinois
Chicago County, Illinois
Cottage Grove, Illinois
Piquette Township, Michigan
Cottagesville, Illinois State Prison East
North American Printing Press

[illegible]





City of St. Charles, Illinois

Two East Main Street, St. Charles, IL 60174-1981
Phone: 636-377-4400 Fax: 636-377-4440 - www.stcharles.il.gov

Precision GIS

RAYMOND ROGINA

Mayor

MARR KOENEN

City Administrator



DATA SOURCE
City of St. Charles, Illinois
Aerial Photography, January 1998
Precision GIS, Inc. (St. Charles, IL)
Copyright © 1998, Precision GIS, Inc.
Data from the City of St. Charles, Illinois
Data from the City of St. Charles, Illinois
Data from the City of St. Charles, Illinois



16TH STREET ISLAND (AREA 28)

This map was created by Precision GIS, Inc. and is provided as is, without warranty of any kind, and is not to be used for any purpose other than that for which it was created. The information contained on this map is the property of Precision GIS, Inc. and is not to be reproduced or transmitted in any form or by any means, electronic, mechanical, photocopying, recording, or by any information storage and retrieval system, without prior written permission from Precision GIS, Inc. Copyright © 1998, Precision GIS, Inc. All rights reserved.





Precision GIS

RAYMOND ROGINA Mayor
MARK KOENEN City Administrator



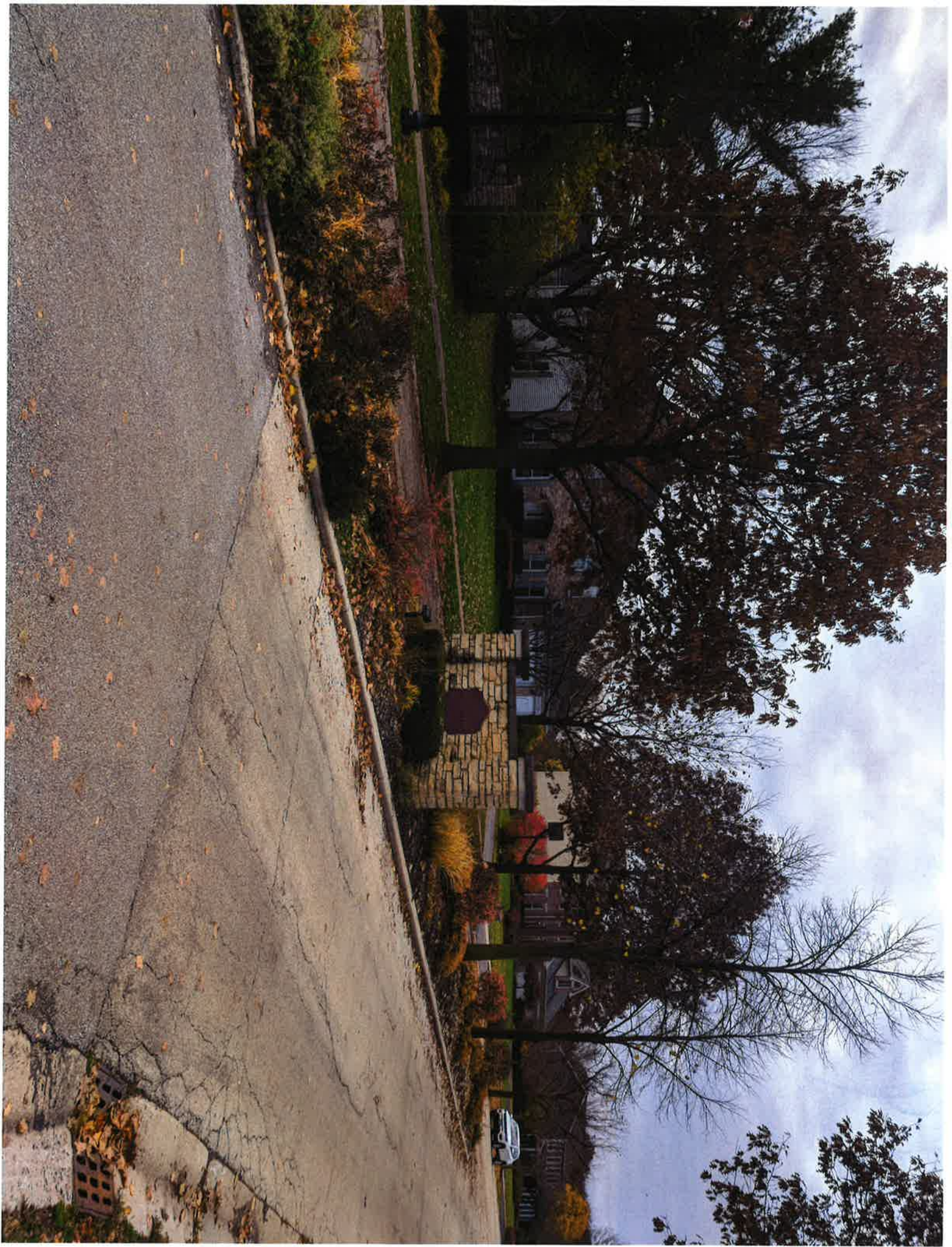
ROUTE 31/ABBNEYWOOD DRIVE WEST ISLAND (AREA 29)

Data Source:
City of St. Charles, Illinois
Cook County, Illinois
DeKalb County, Illinois
Project: Transwest Express
Coordinates: 38°58'N, 90°53'W
North American Datum 1983



10 Feet

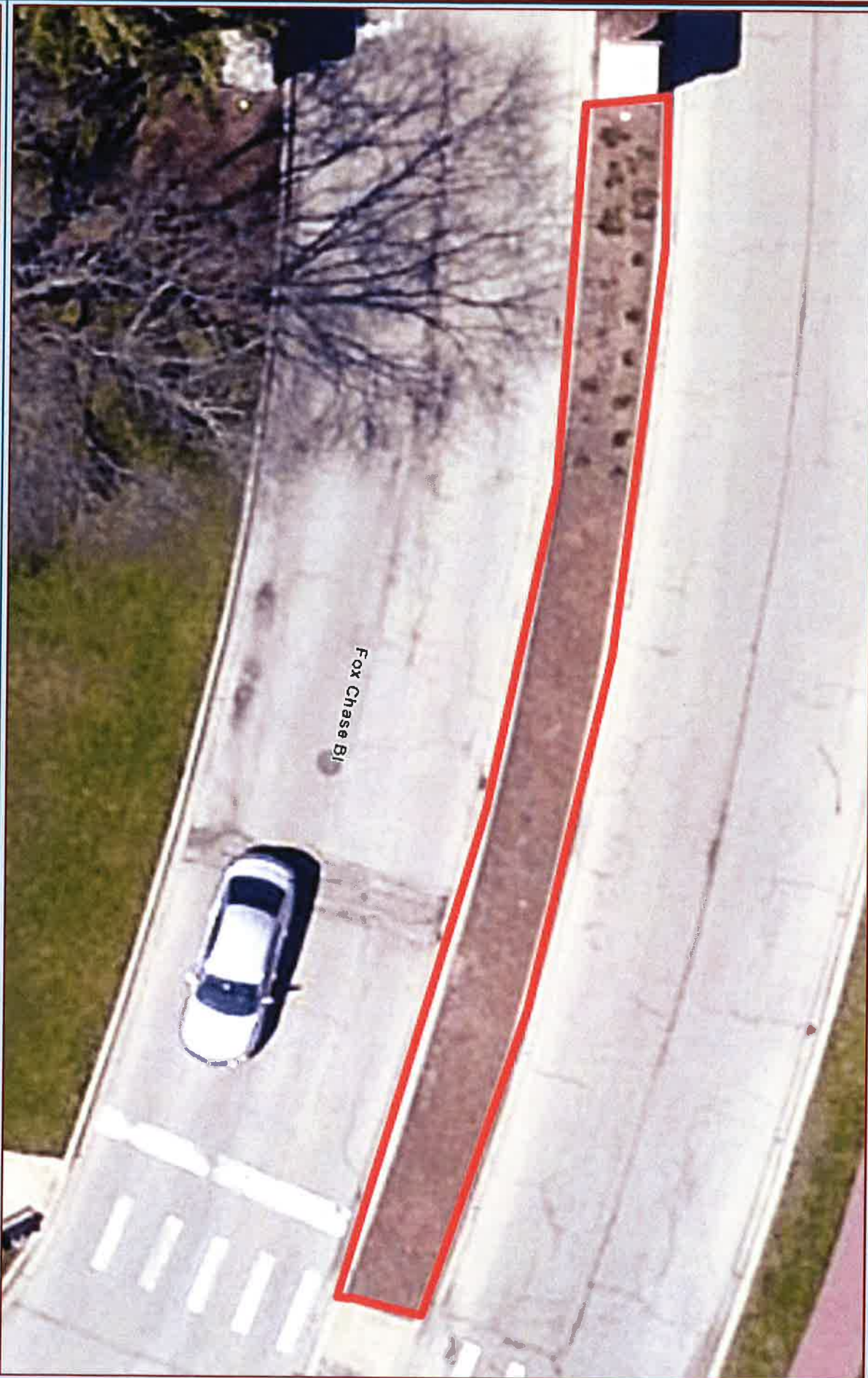
[illegible]





Precision GIS

RAYMOND ROGINA *Mayor*
MARK KOENEN *City Administrator*



FOX CHASE BOULEVARD ENTRANCE ISLAND (AREA 30)



2.0 Feet

The book was compiled for Planning Program 1047 and it provided as a national survey of art sites, with an emphasis on religious art. The author, an experienced art historian, provided a list of 100 religious art sites in the United States. The author, an experienced art historian, provided a list of 100 religious art sites in the United States. The author, an experienced art historian, provided a list of 100 religious art sites in the United States.





Precision GIS

RAYMOND ROGINA
Mayor

MARK KOENEN
City Administrator



ROUTE 64 THOMPSON MIDDLE SCHOOL BED (AREA 31)



42 Feet

[illegible]





Precision GIS

RAYMOND ROGINA *Mayor*
MARK KOENEN *City Administrator*

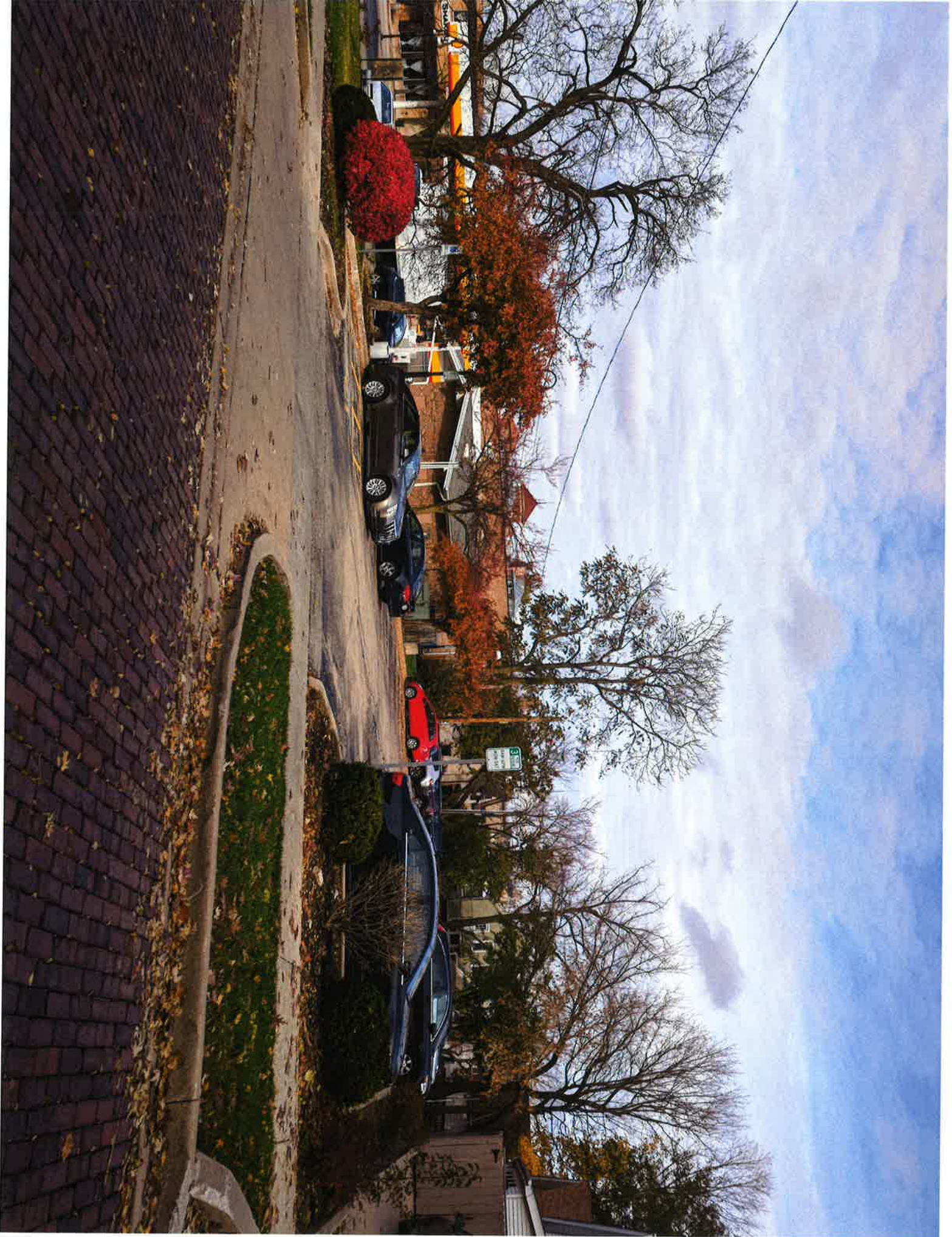


4TH/WALNUT STREET LOT BEDS (AREA 32)

[illegible]

-20 Feb

[illegible]





Precision GIS

RAYMOND ROGINA *Mayor*
MARK KOENEN *City Administrator*



SOUTH 3RD STREET/GRAY STREET MONUMENT SIGN BED (AREA 33)

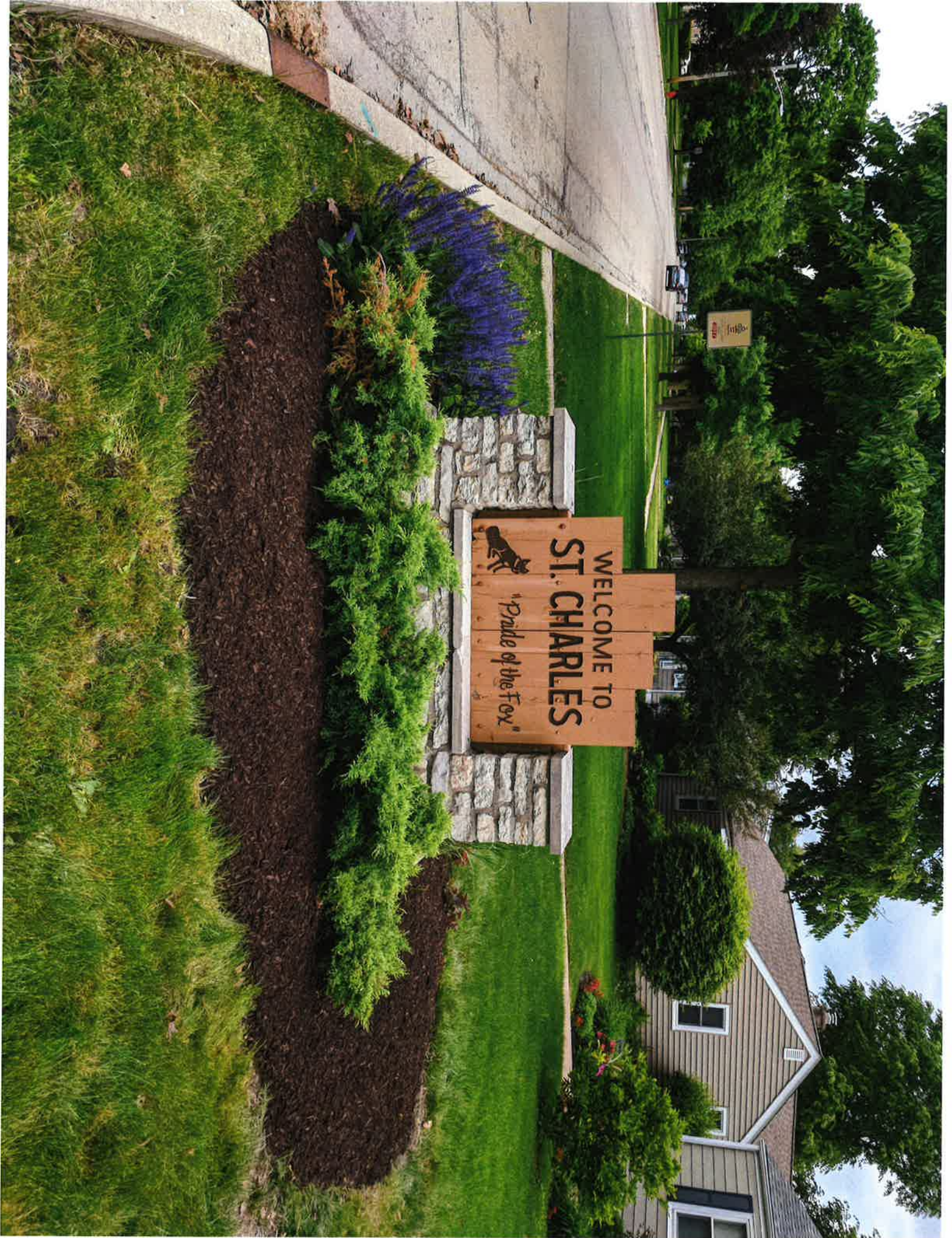


Date Rec'd: _____
 City of St. Charles, Missouri
 State County, Illinois
 District County, Illinois
 Applicant: _____
 Conditions: _____
 North American Datum 1983
 Printed in Colombia 11 2010 15 22 94



10 For

[illegible]



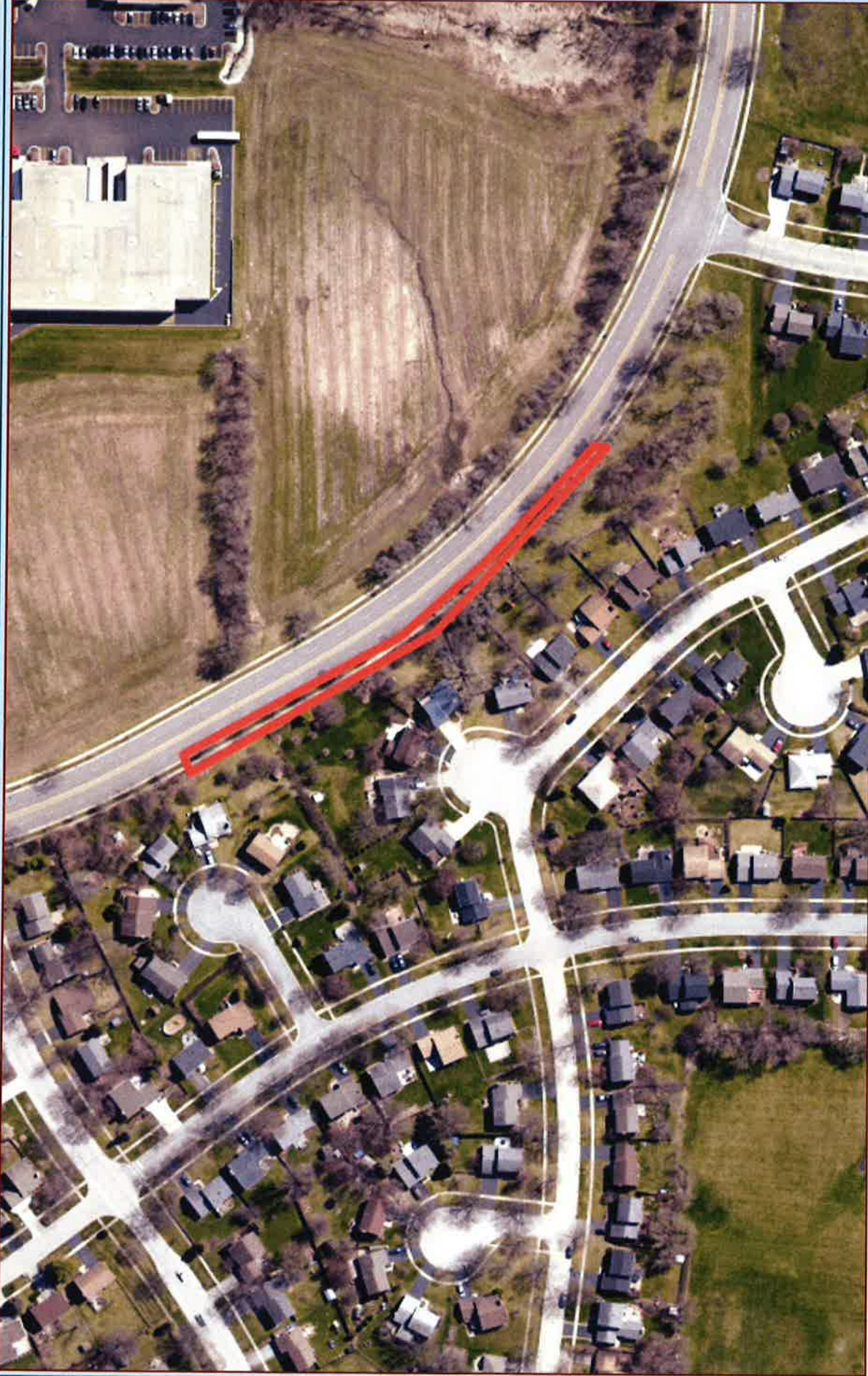




City of St. Charles, Illinois
Two East Main Street, St. Charles, IL 60174-1984
Phone: 630-377-4400 Fax: 630-377-4440 - www.stcharlesil.gov

Precision GIS

RAYMOND ROGINA Mayor
MARK KOENEN City Administrator



City of St. Charles, Illinois
Planning Department
North American Division
Printed on: December 12, 2013 10:11 AM



137 Feet
0 50 100

TYLER ROAD WEST FENCELINE BED (AREA 34)

This map was prepared by Precision GIS, Inc. and is provided as a service to the City of St. Charles. It is not intended to be used for any other purpose. The information represented on this map is for informational purposes only and should not be used for any part of this document without prior written permission. Copyright © 2013 Precision GIS, Inc.