

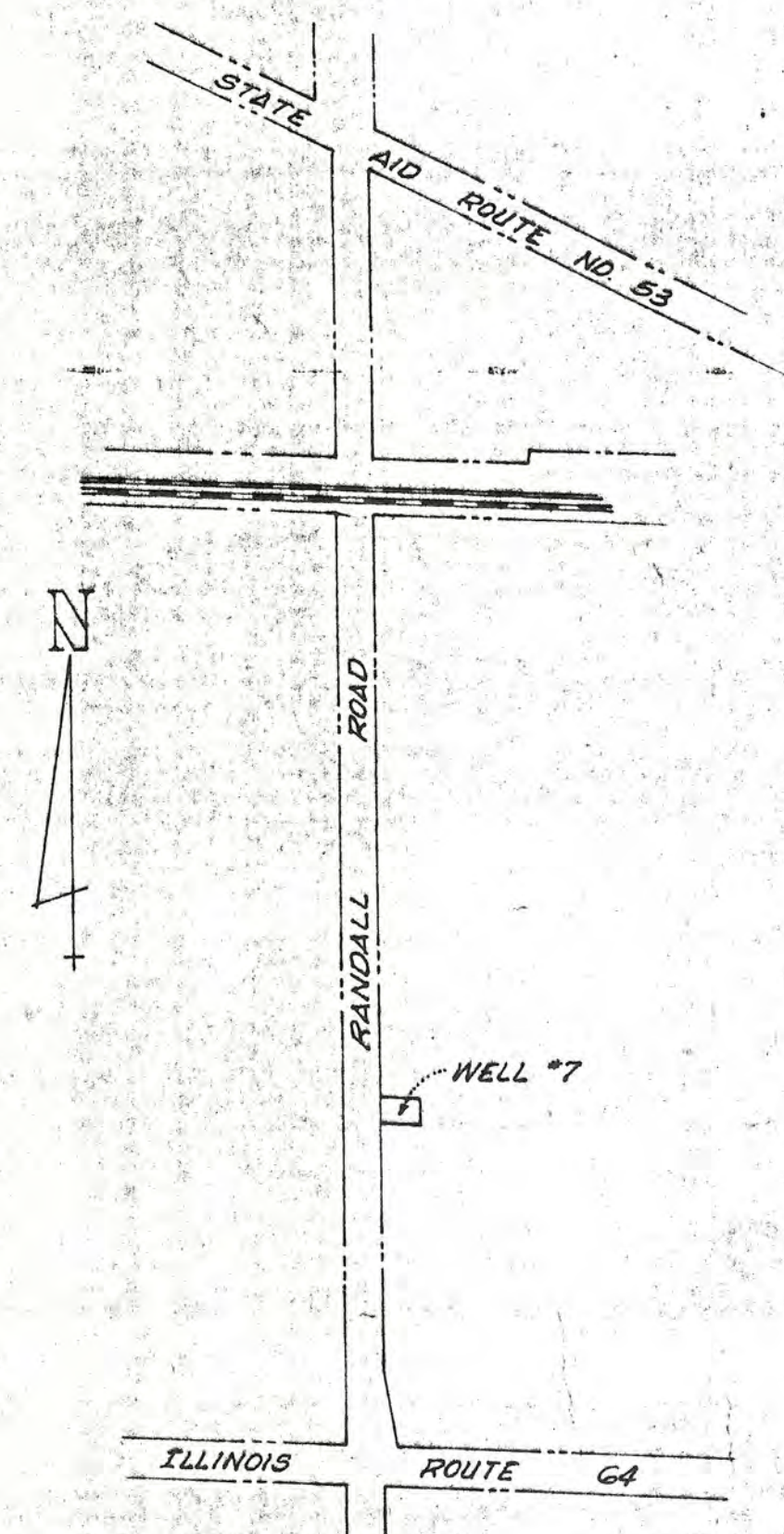
CITY of ST. CHARLES

KANE COUNTY, ILLINOIS

PLANS FOR WATER SYSTEM IMPROVEMENTS

IRON FILTRATION ADDITION WELL NO. 7

NOVEMBER
1970



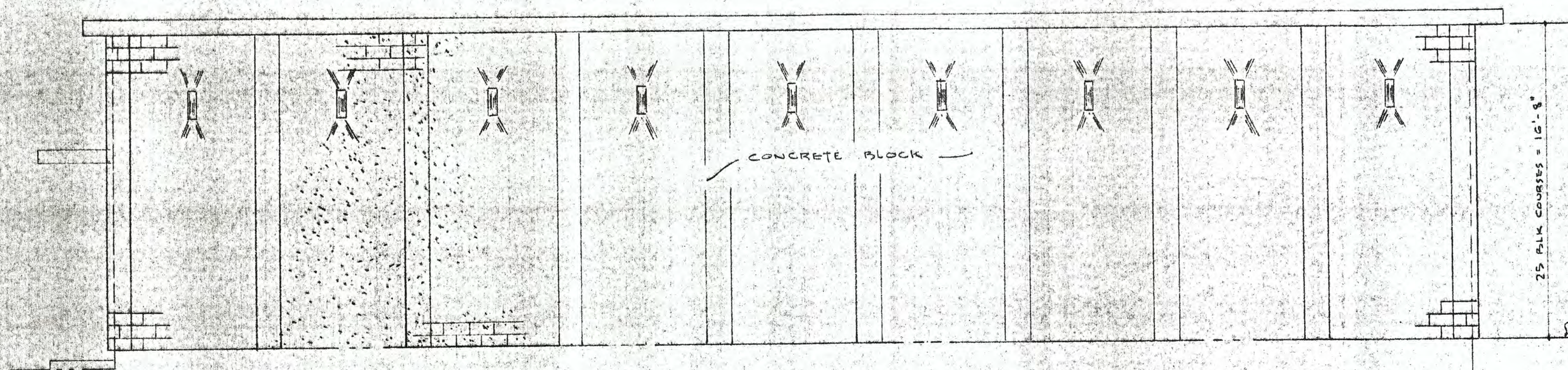
SHEET NO.	DESCRIPTION
1.	TITLE SHEET, LOCATION MAP, INDEX TO SHEETS
2.	ARCHITECTURAL - EXTERIOR ELEVATIONS
3.	ARCHITECTURAL - FLOOR PLAN, PIPING & EQUIPMENT
4.	ARCHITECTURAL - SECTIONAL ELEVATION STRUCTURAL STEEL ROOF SLAB, PIPING & EQUIPMENT
5.	STRUCTURAL - PLAN AND SECTIONS
6.	STRUCTURAL - PLAN AND SECTIONS
7.	FENCING, OUTSIDE PIPING AND MISCELLANEOUS DETAILS
8.	ROOF PLAN, ELECTRICAL DETAILS, VALVE SCHEDULE AND DIAGRAMS

ROBERT H. ANDERSON & ASSOC. INC.
— CONSULTING ENGINEERS —
ST. CHARLES, ILLINOIS

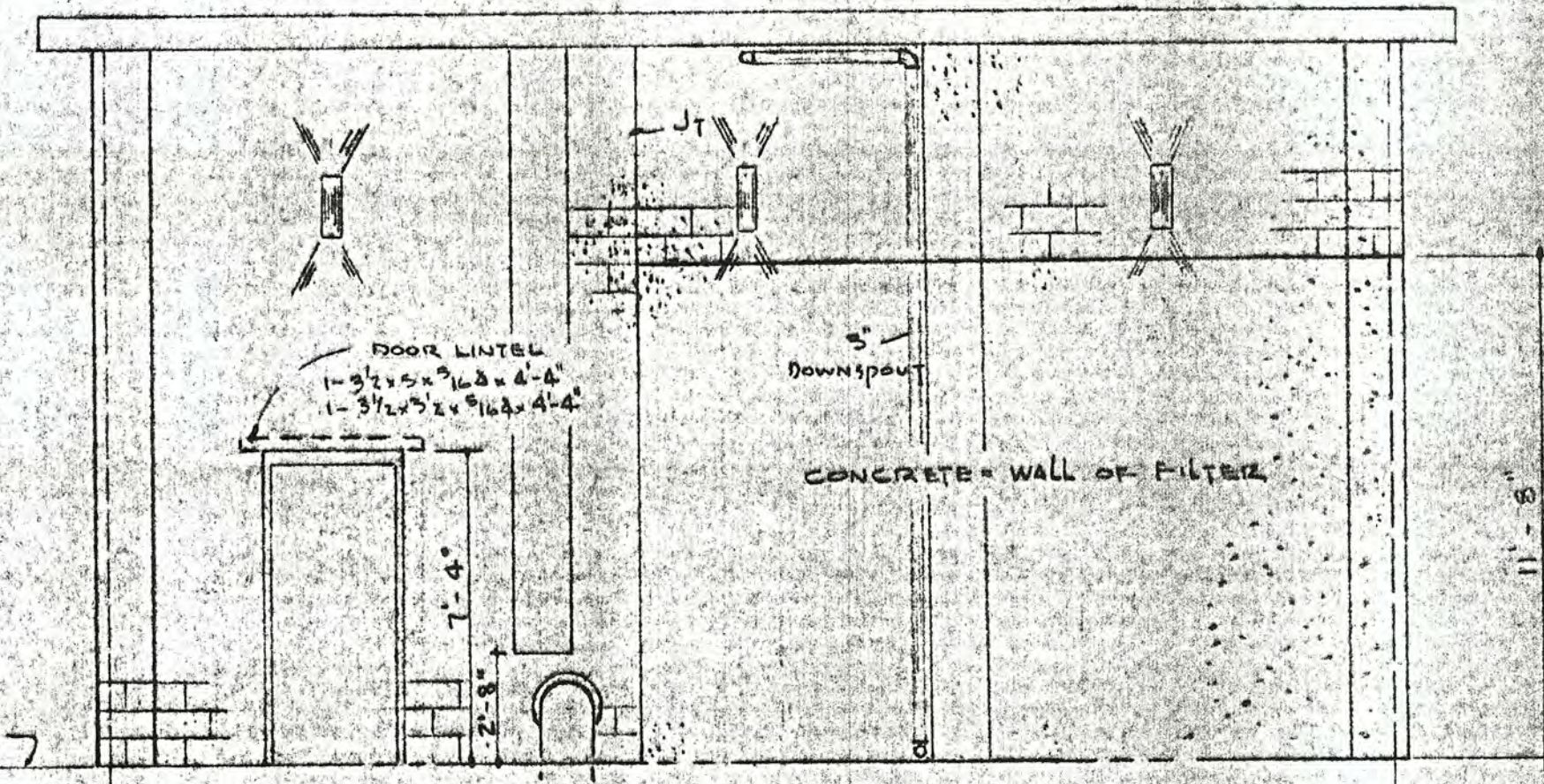
CITY OF ST. CHARLES
WELL # 7
IRON FILTRATION ADDITION

9-2D

Sheet 1 of 8

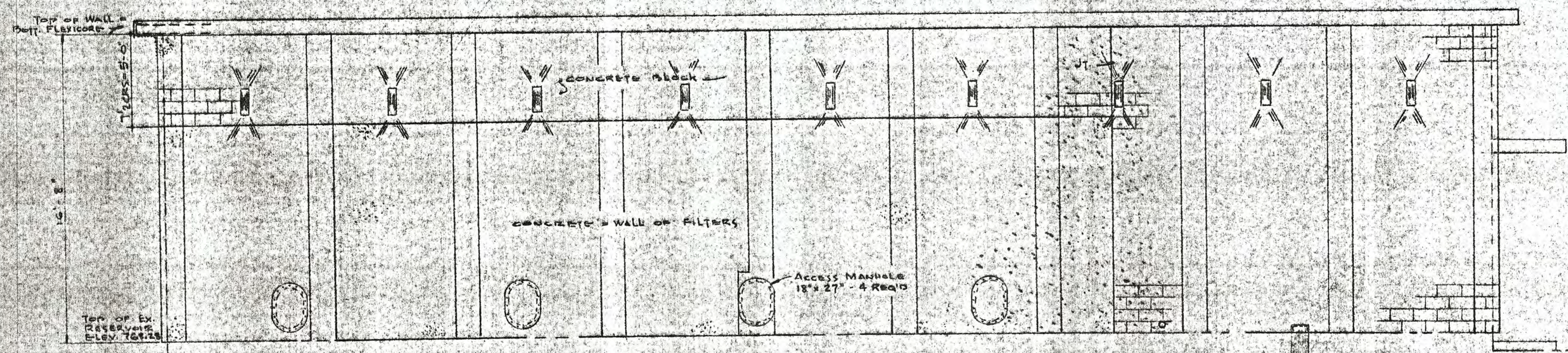


SOUTH ELEVATION
1/4" = 1'-0"

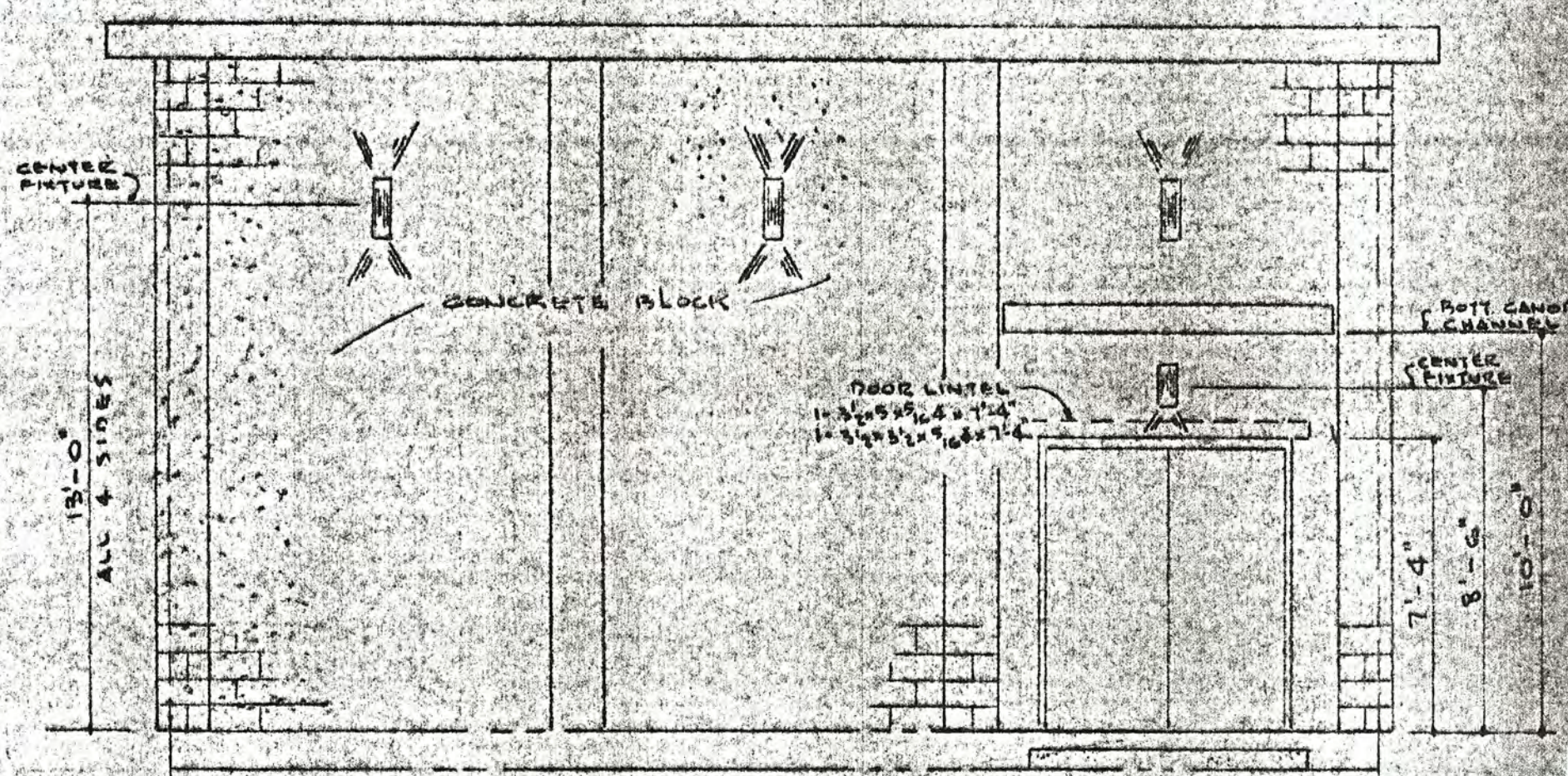


EAST ELEVATION
1/4" = 1'-0"

- NOTES:**
1. ALL EXTERIOR SURFACES OF BLOCK AND CONCRETE TO HAVE SURFACE APPLIED AGGREGATE. BLOCK SHALL HAVE EXTERIOR JOINTS STRUCK FLUSH.
 2. ALL BLOCK PILASTERS TO BE SOLID BLOCK FOR BOTT. 2 CRS. BLOCK TO BE BOLLNOSE TYPE CORNER.

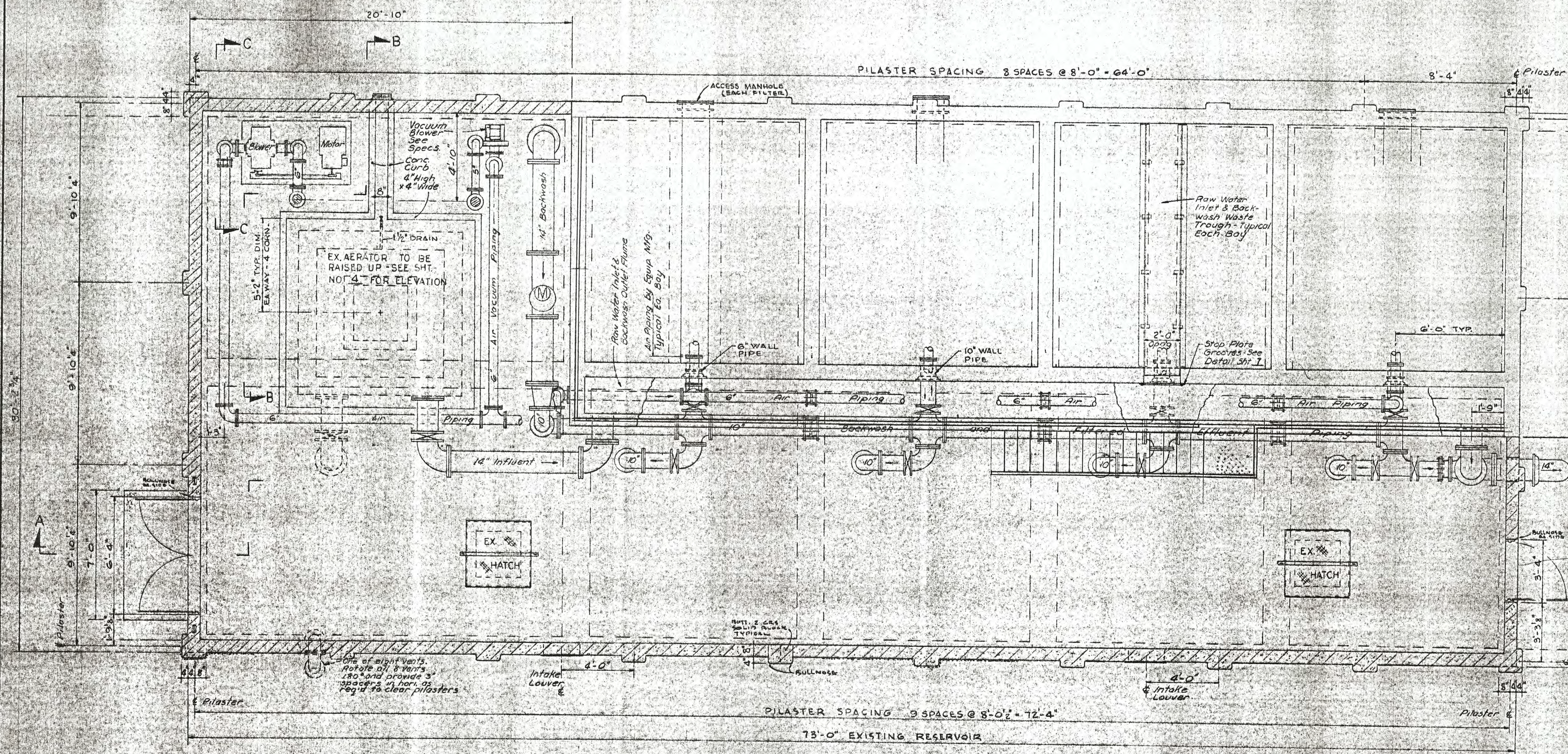


NORTH ELEVATION
1/4" = 1'-0"



WEST ELEVATION
1/4" = 1'-0"

WATER SYSTEM IMPROVEMENTS IRON FILTRATION ADDITION ST. CHARLES, ILLINOIS		
SCALE: 1/4" = 1'-0"	WELL No. 7	DRAWN BY G.J.
DATE:	REVISED:	
ARCHITECTURAL EXTERIOR ELEVATIONS		
ROBERT H. ANDERSON & ASSOCIATES, INC. CONSULTING ENGINEERS ST. CHARLES, ILLINOIS		
SHEET		2 OF 8

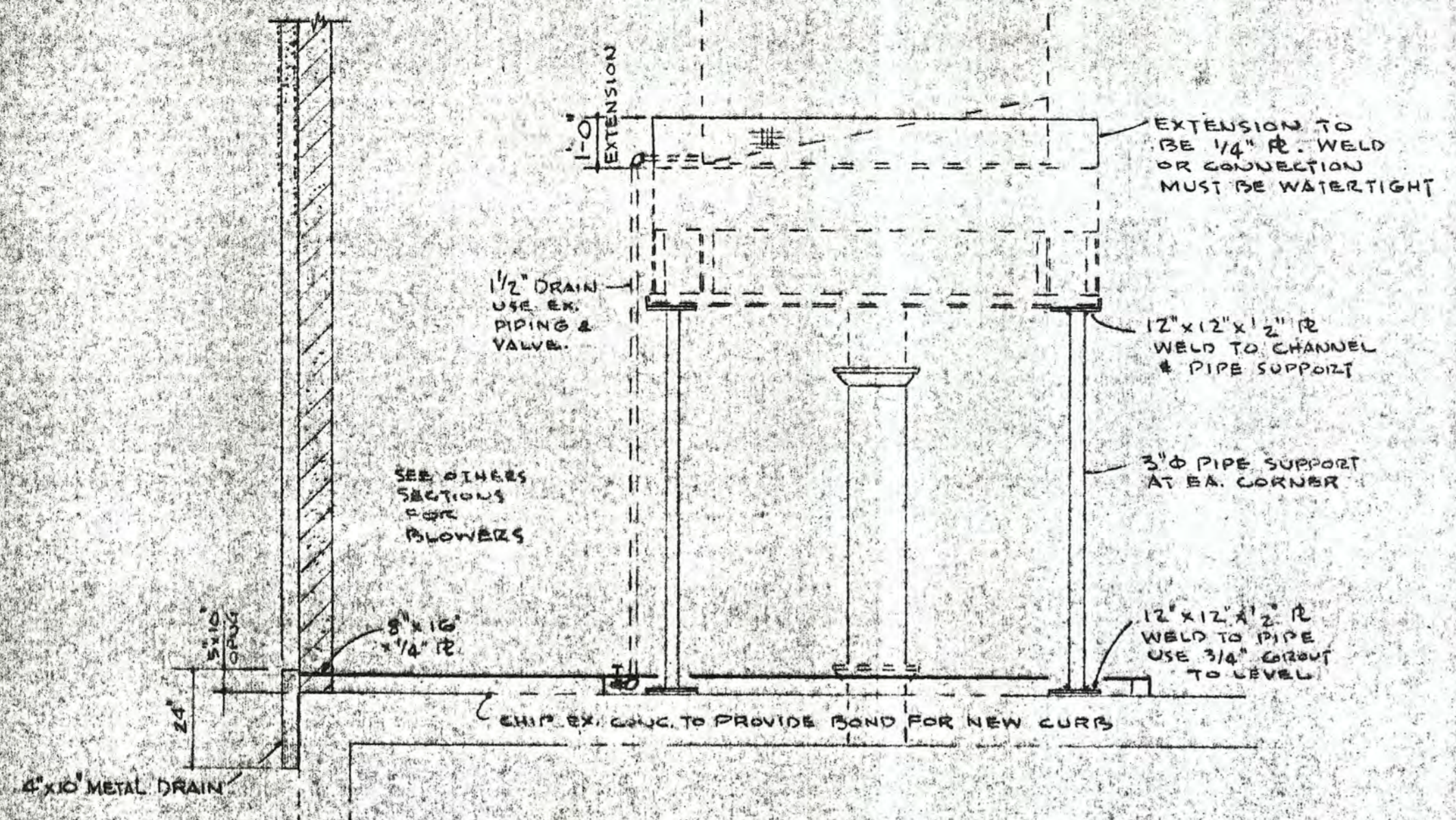


HARDWARE NOTES

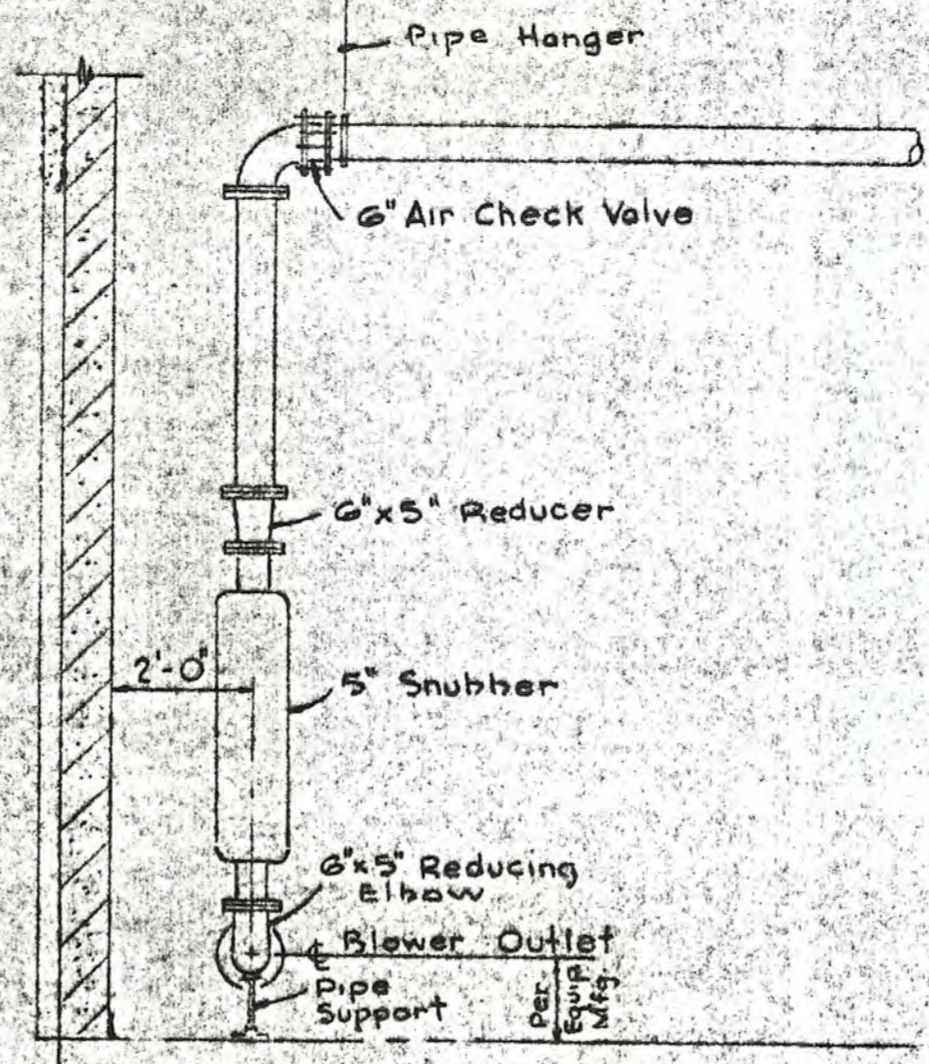
1. ALL HARDWARE TO HAVE US 2210 FINISH
2. JOBS TO BE MAINTAINED
3. DOORS TO HAVE 1 1/2\"/>

PLAN
SEE SHEET 4 FOR SECTION A & B

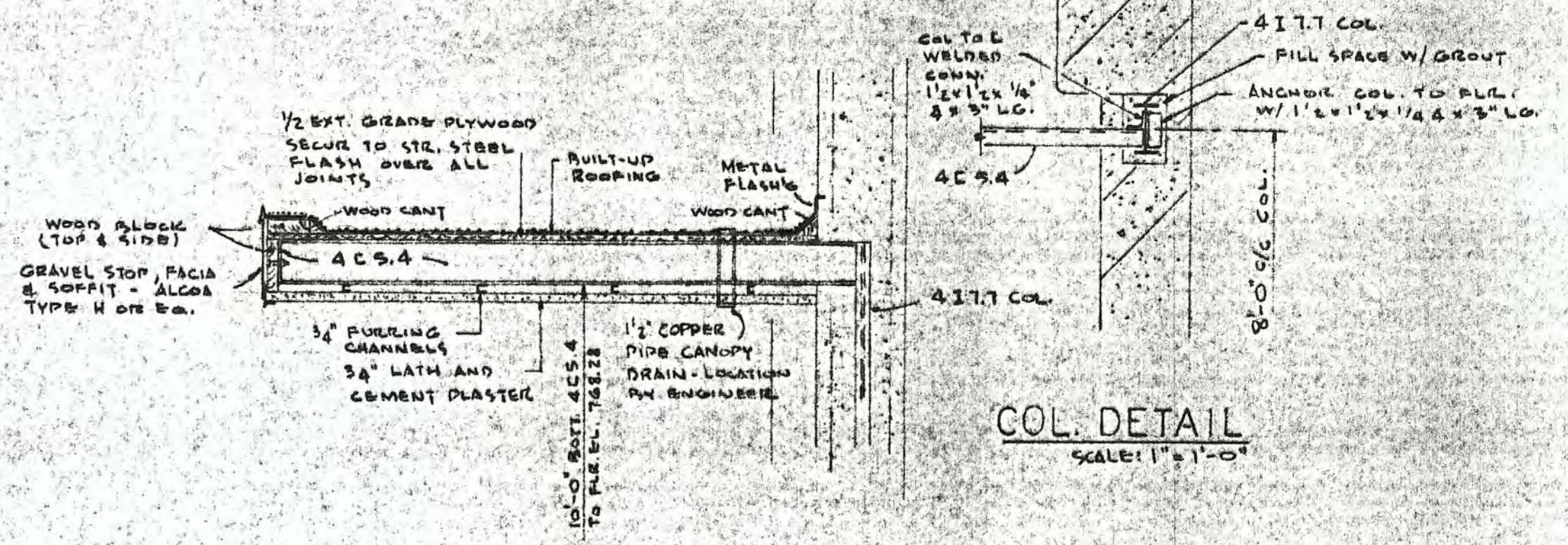
WATER SYSTEM IMPROVEMENTS IRON FILTRATION ADDITION ST. CHARLES, ILLINOIS		
SCALE: 3/4" = 1'-0"	WELL NO 7	DRAWN BY CU
DATE:		REVISED
ARCHITECTURAL - FLOOR PLAN, PIPING AND EQUIPMENT		
ROBERT H. ANDERSON & ASSOCIATES, INC. CONSULTING ENGINEERS ST. CHARLES, ILLINOIS		SHEET 3 OF 6



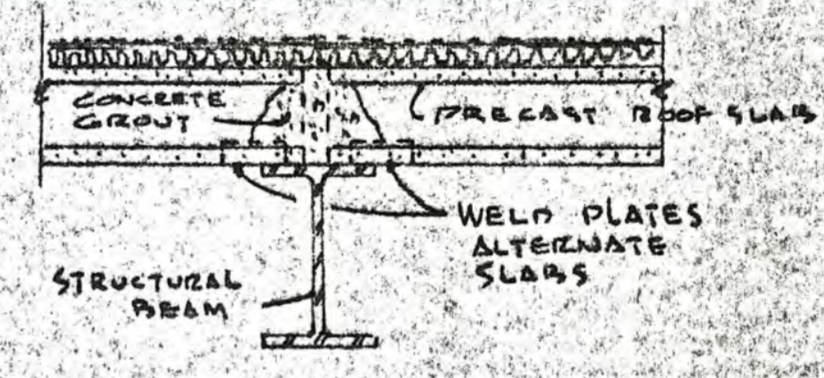
SECTION B-B



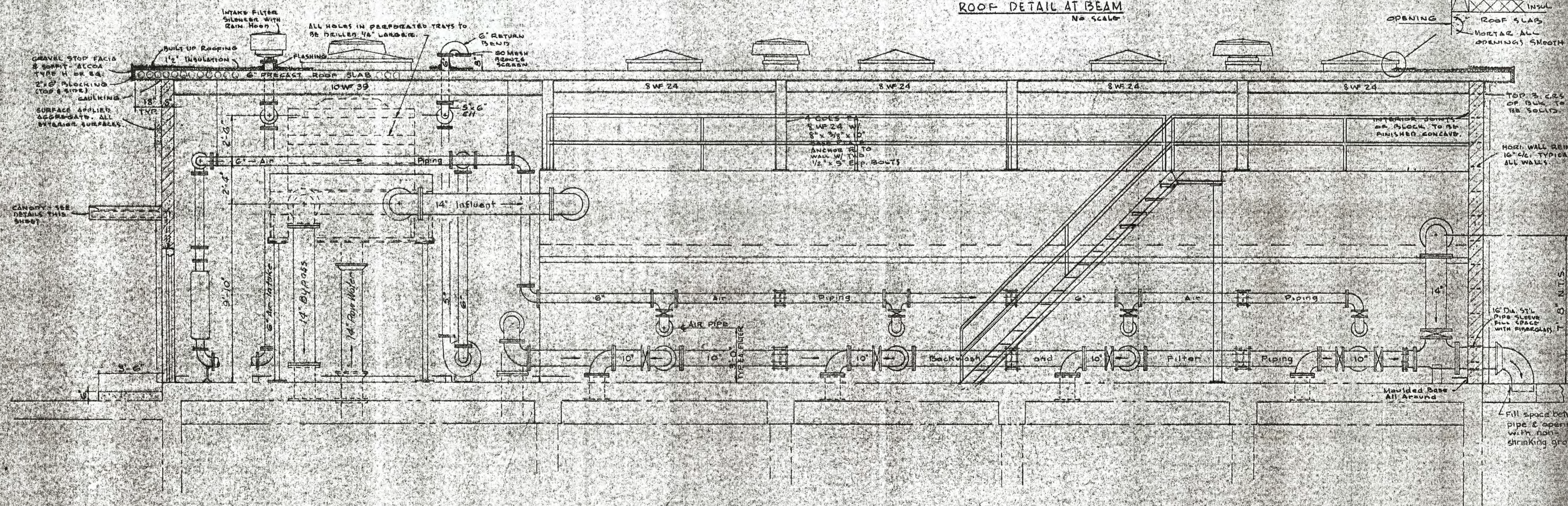
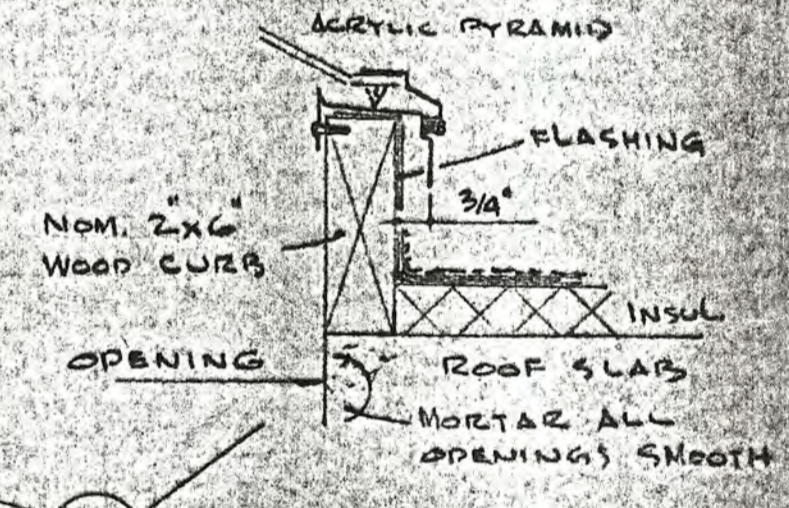
SECTION C-C



CANOPY DETAIL
SCALE: 1" = 1'-0"

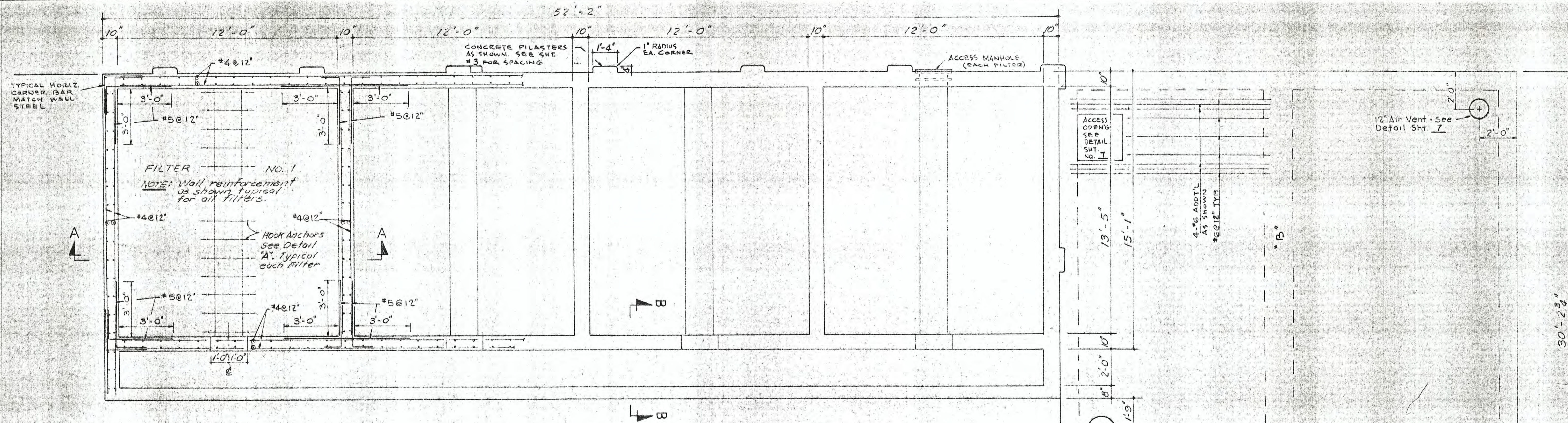


ROOF DETAIL AT BEAM
NO SCALE

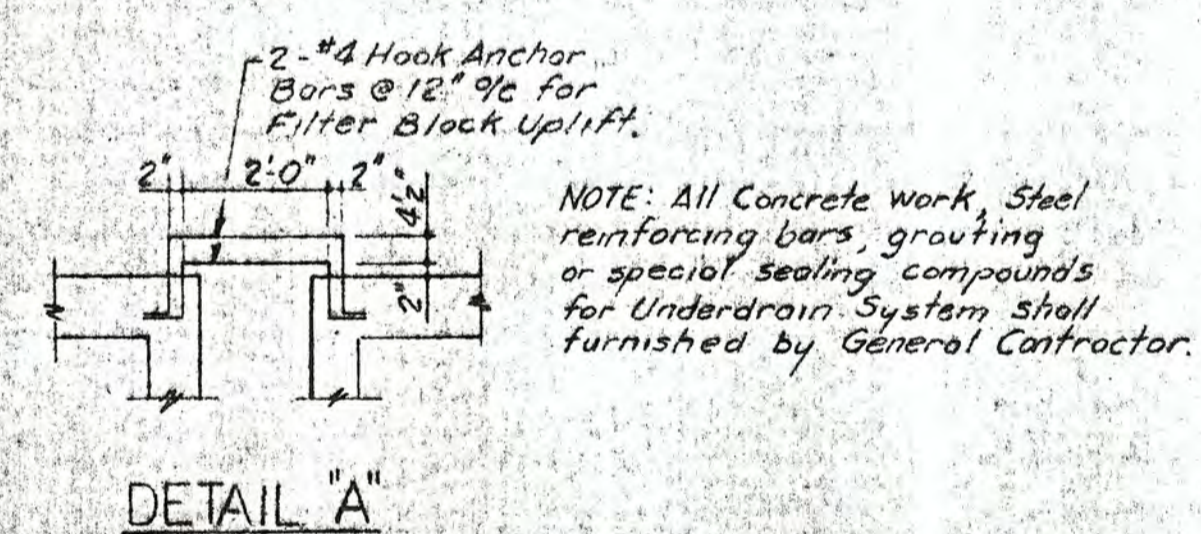


SECTION A-A

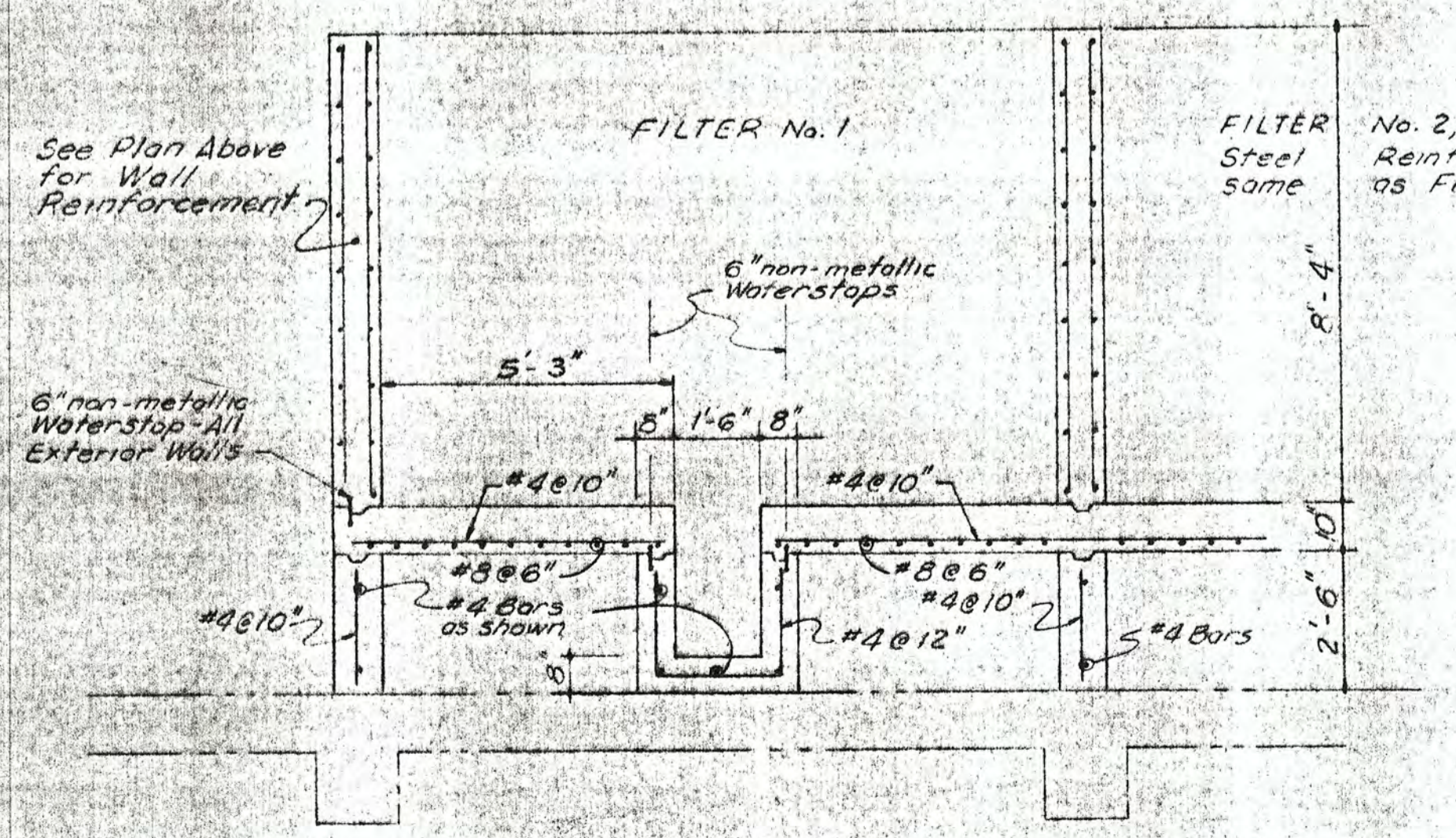
WATER SYSTEM IMPROVEMENTS IRON FILTRATION ADDITION ST. CHARLES, ILLINOIS		
SCALE: 3/4" = 1'-0"	WELL NO 7	DRAWN BY: [Signature]
DATE: [Blank]		REVIEWED: [Signature]
ARCHITECTURAL-SECTIONAL ELEVATIONS STRUCTURAL STEEL, ROOF SLAB, PIPING, AND EQUIPMENT		
ROBERT H. ANDERSON & ASSOCIATES, INC. CONSULTING ENGINEERS ST. CHARLES, ILLINOIS		SHEET 4 OF 8



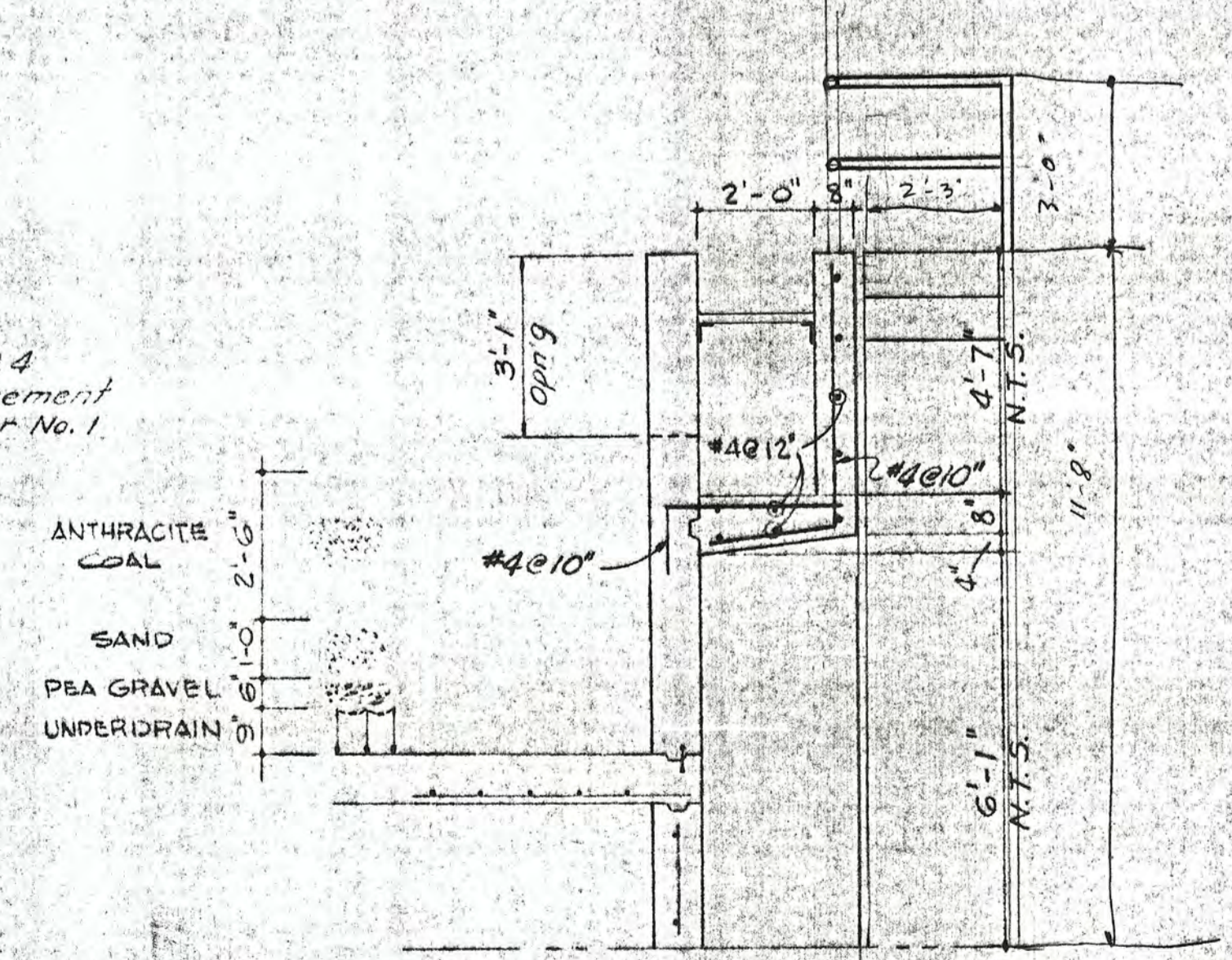
PLAN
FILTER BAYS & BACKWASH STORAGE TANK



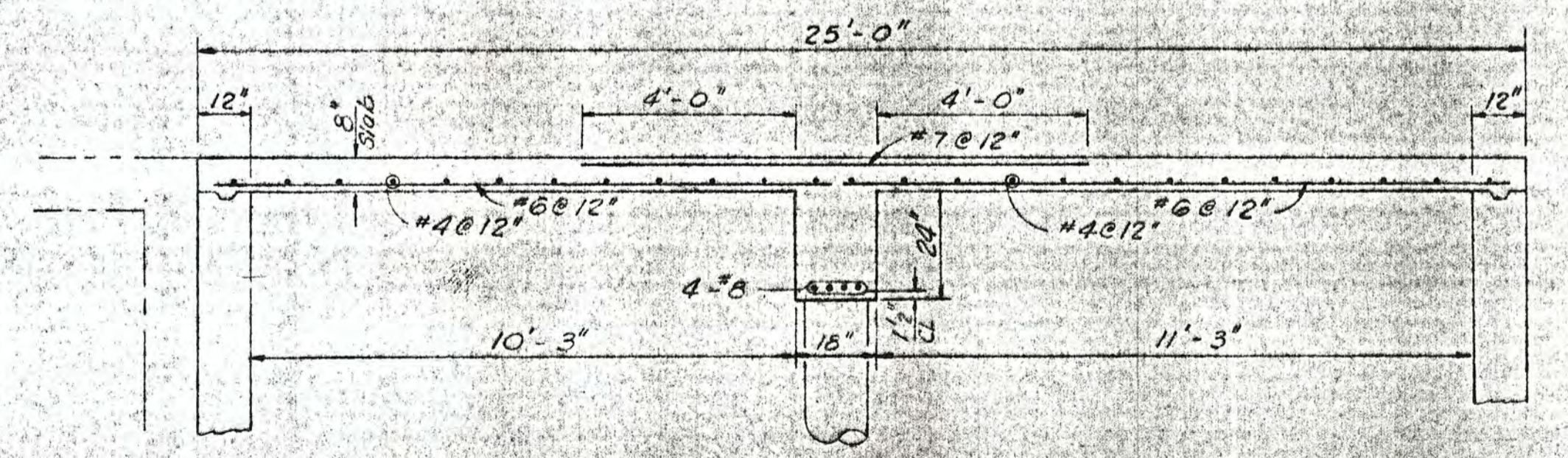
DETAIL "A"



SECTION A-A

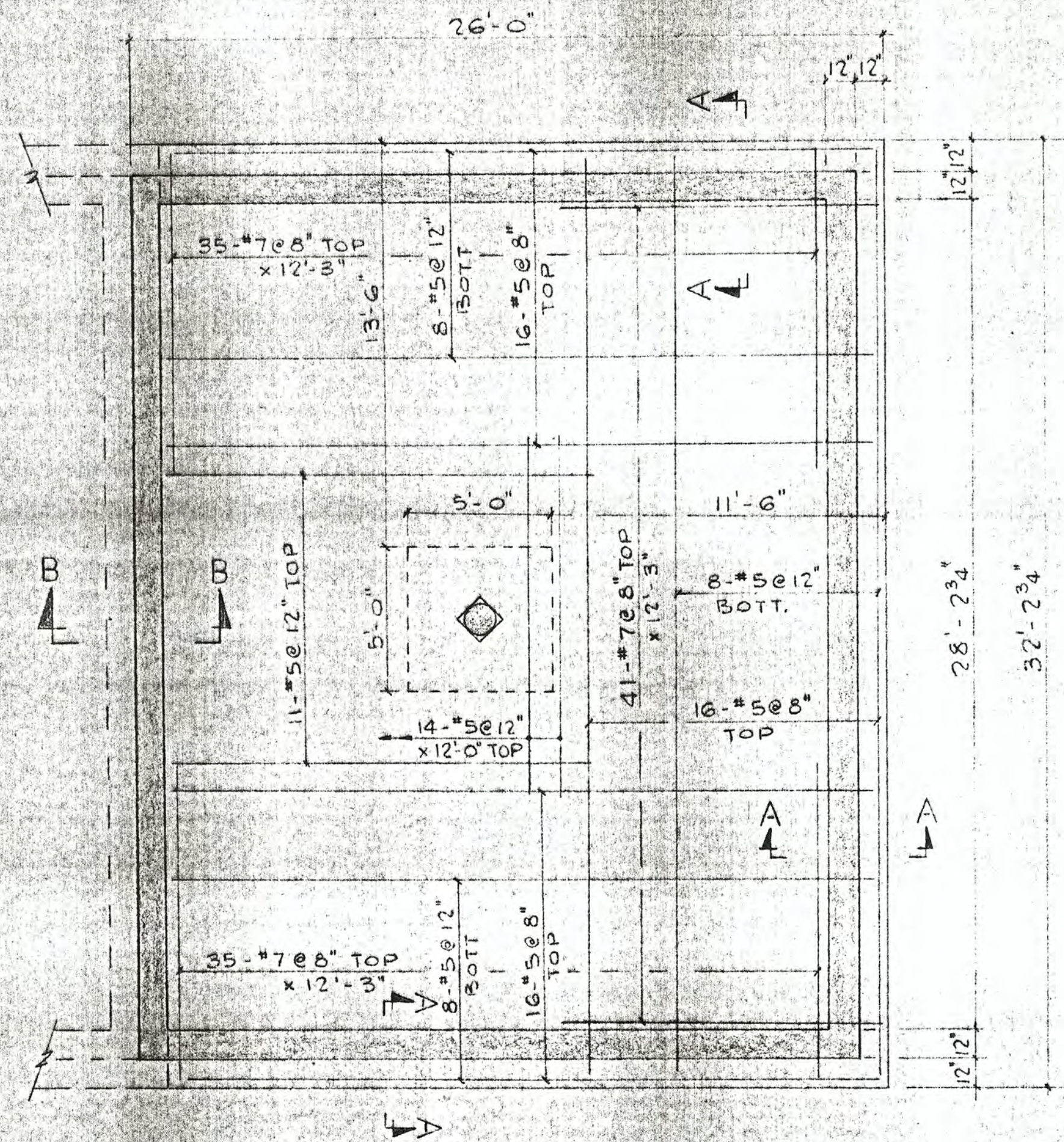


SECTION B-B

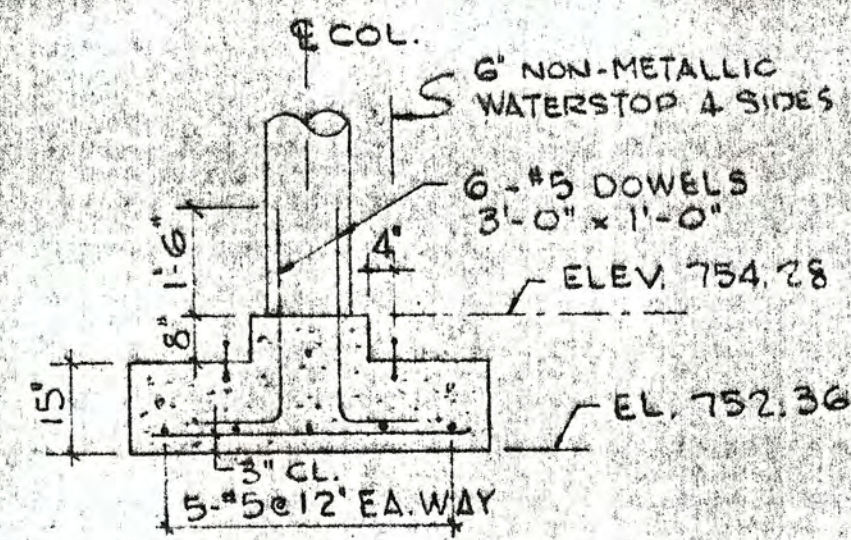


SECTION C-C

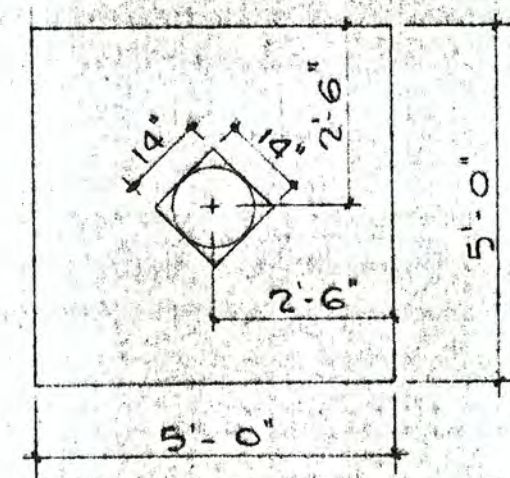
WATER SYSTEM IMPROVEMENTS IRON FILTRATION ADDITION ST. CHARLES, ILLINOIS		
SCALE: 3/8"=1'-0"	WELL NO. 7	DRAWN BY G.J.
DATE:		REVISED
STRUCTURAL - PLAN AND SECTIONS		
ROBERT H. ANDERSON & ASSOCIATES, INC. CONSULTING ENGINEERS ST. CHARLES, ILLINOIS		SHEET 5 OF 8



PLAN OF BOTT. SLAB
BACKWASH STORAGE TANK
SCALE: 1/4" = 1'-0"

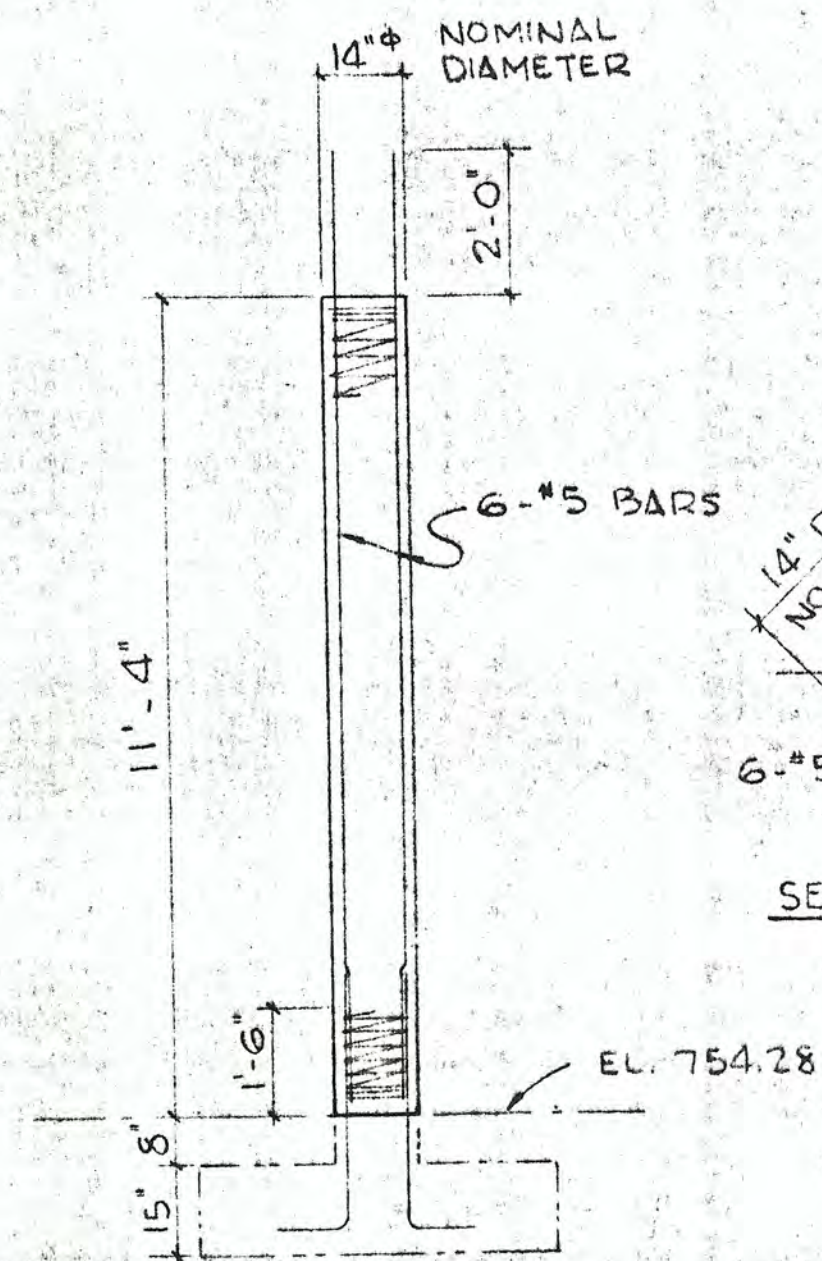


SECTION

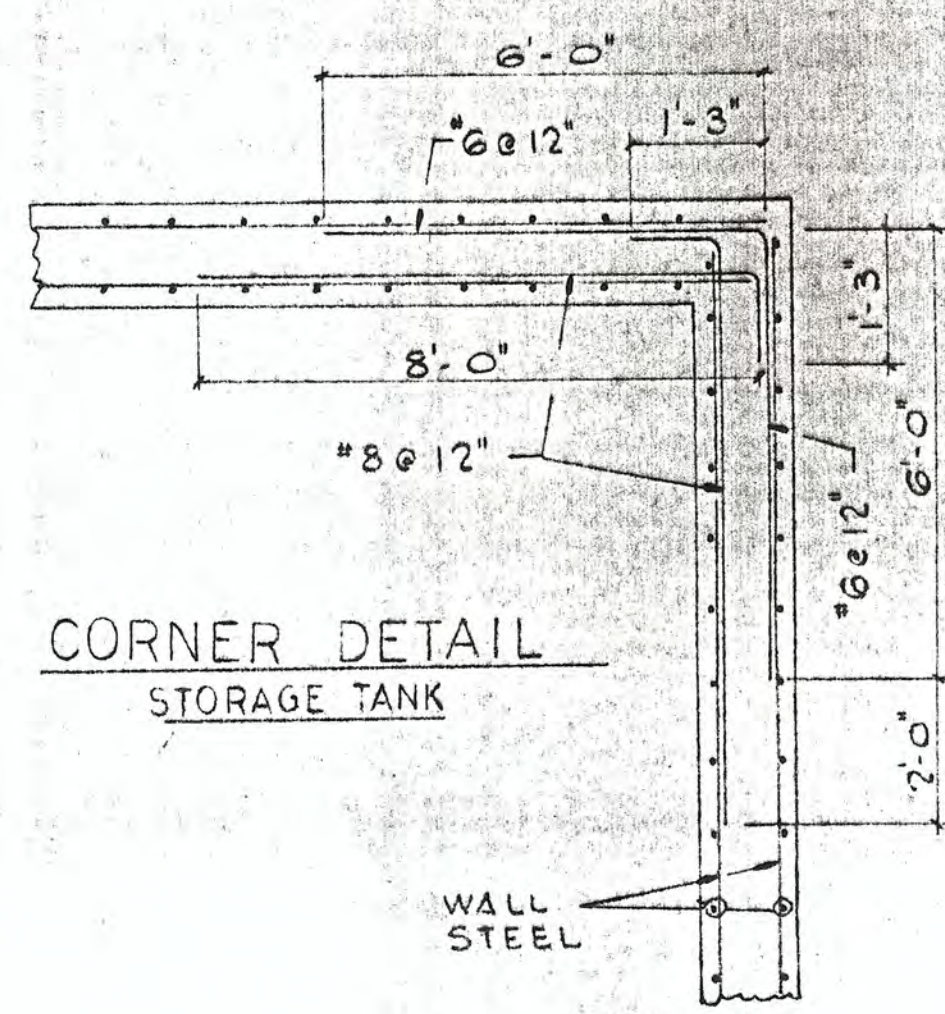


PLAN

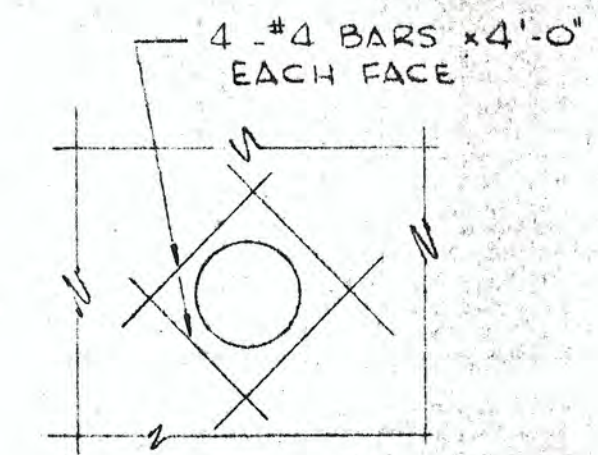
COLUMN SUPPORT



COLUMN DETAIL



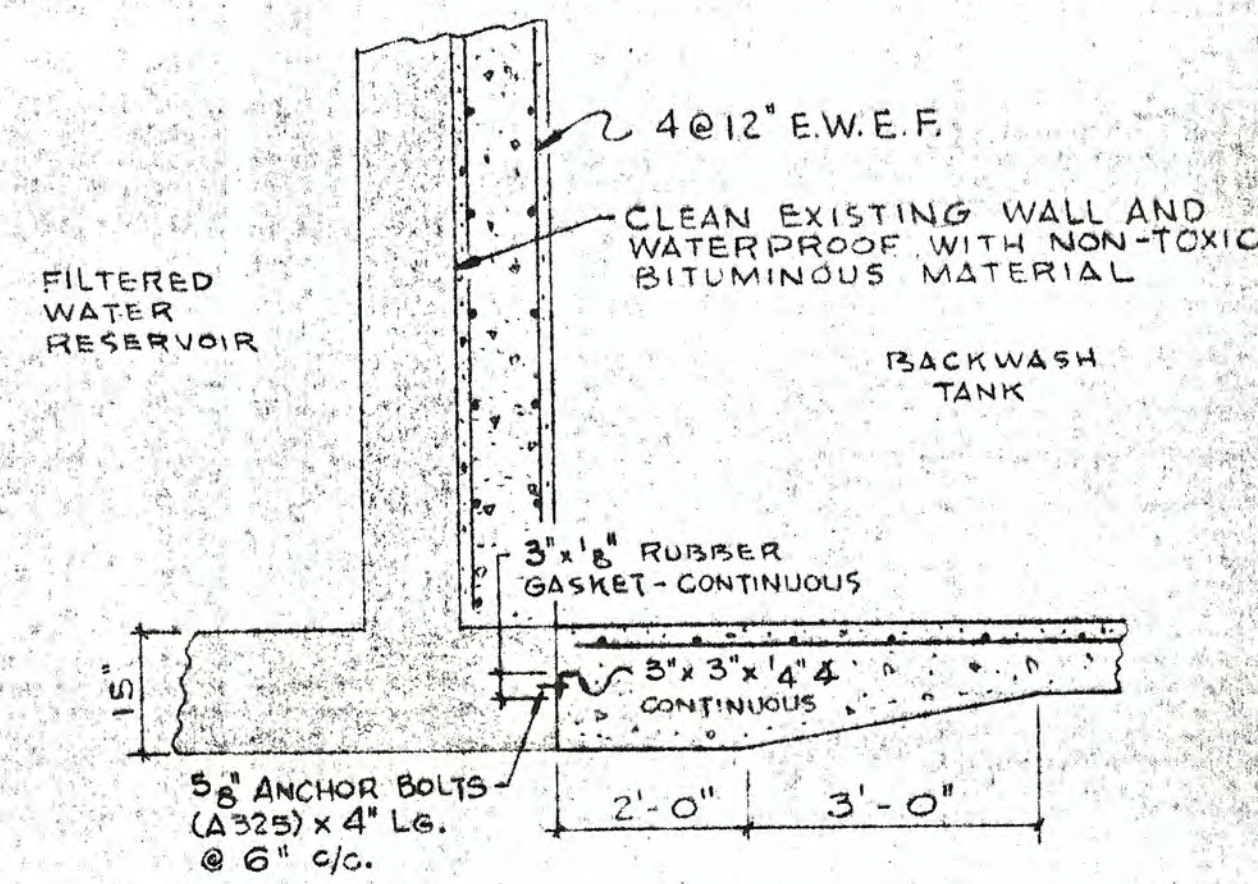
CORNER DETAIL
STORAGE TANK



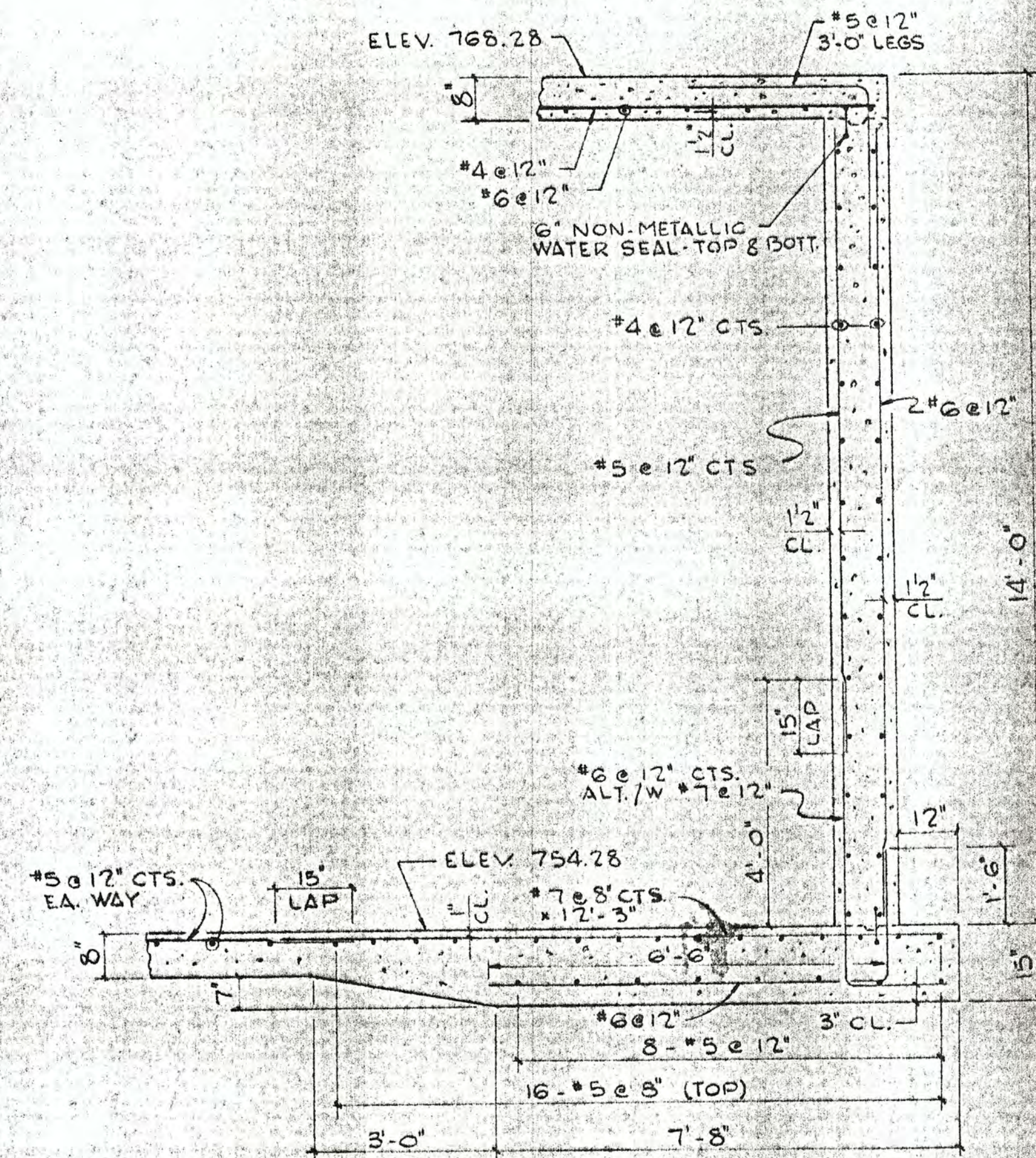
DETAIL AT OPENINGS
TYPICAL FOR WALLS & SLABS



TYPICAL WALL CONSTRUCTION JOINT



SECTION B-B
SCALE: 1/2" = 1'-0"



SECTION A-A
SCALE: 1/2" = 1'-0"

NOTES:

REINFORCEMENT BARS SHALL BE LAPPED 24 BAR DIAMETERS UNLESS OTHERWISE SHOWN.

CONSTRUCTION JOINTS IN ADDITION TO THOSE SHOWN ON THE DRAWINGS SHALL NOT BE INSTALLED WITHOUT THE EXPRESS APPROVAL OF THE ENGINEER. ALL JOINTS SHALL HAVE 6" NON-METALLIC WATERSTOP.

FORM TIES SHALL HAVE 1-1/2" BREAK BACK. FORM TIE OPENINGS SHALL BE GROUTED ON EACH SIDE OF WALL.

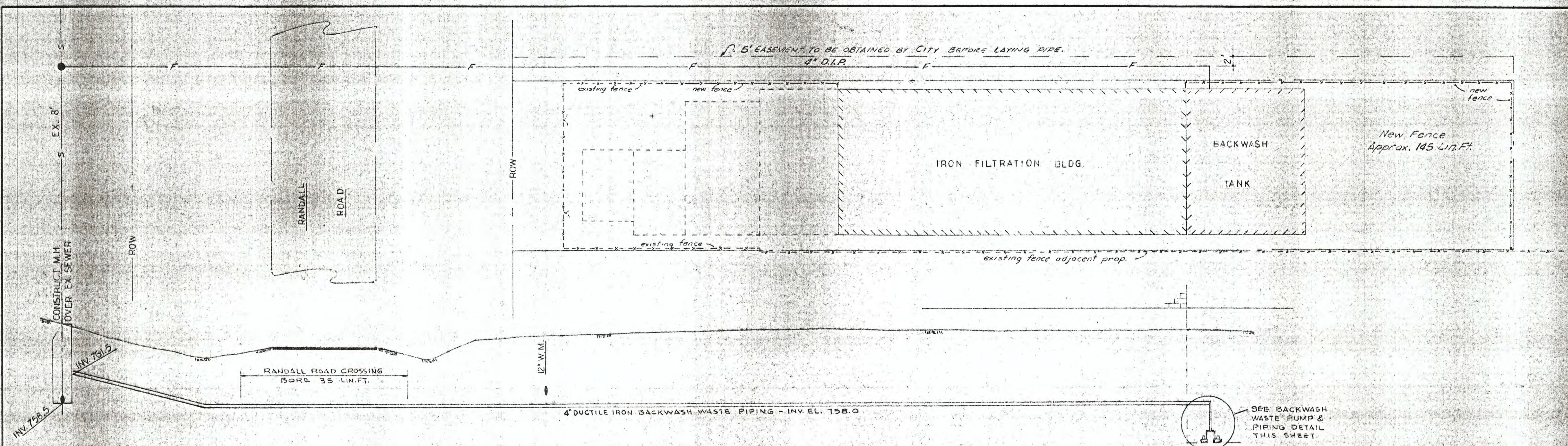
OUTSIDE FACE OF EXTERIOR WALLS SHALL BE WATERPROOFED FROM LOWER CONSTRUCTION JOINT TO GROUND SURFACE IN ACCORDANCE WITH STANDARD SPECIFICATIONS. TOP OF EXPOSED SLAB SHALL HAVE A SILICONE WATERPROOF TREATMENT.

REFER TO PIPING AND MACHINERY DRAWINGS FOR LOCATION OF WALL SLEEVES, ANCHOR BOLTS, DRAINS, SUMPS AND OTHER ACCESSORIES.

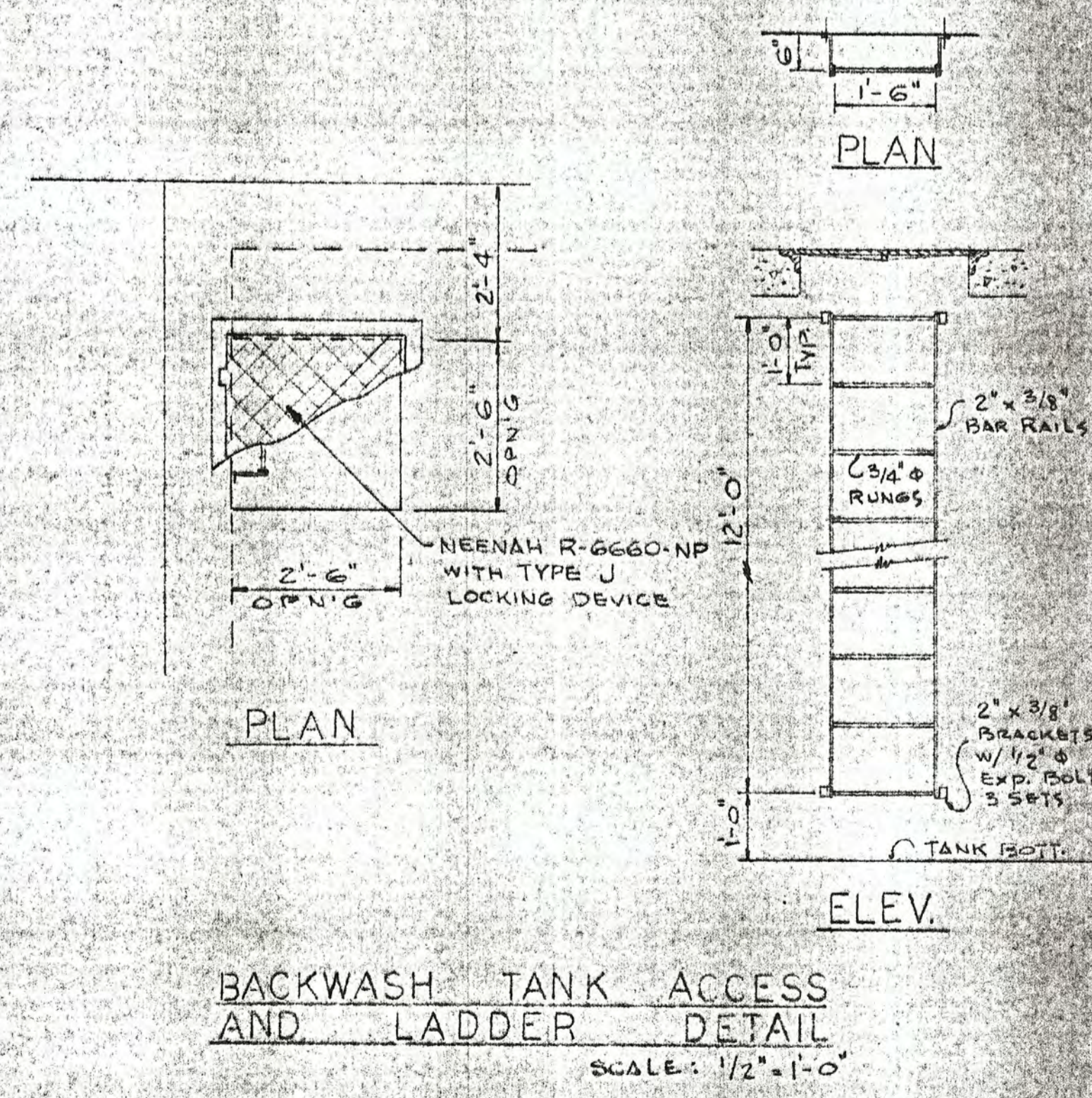
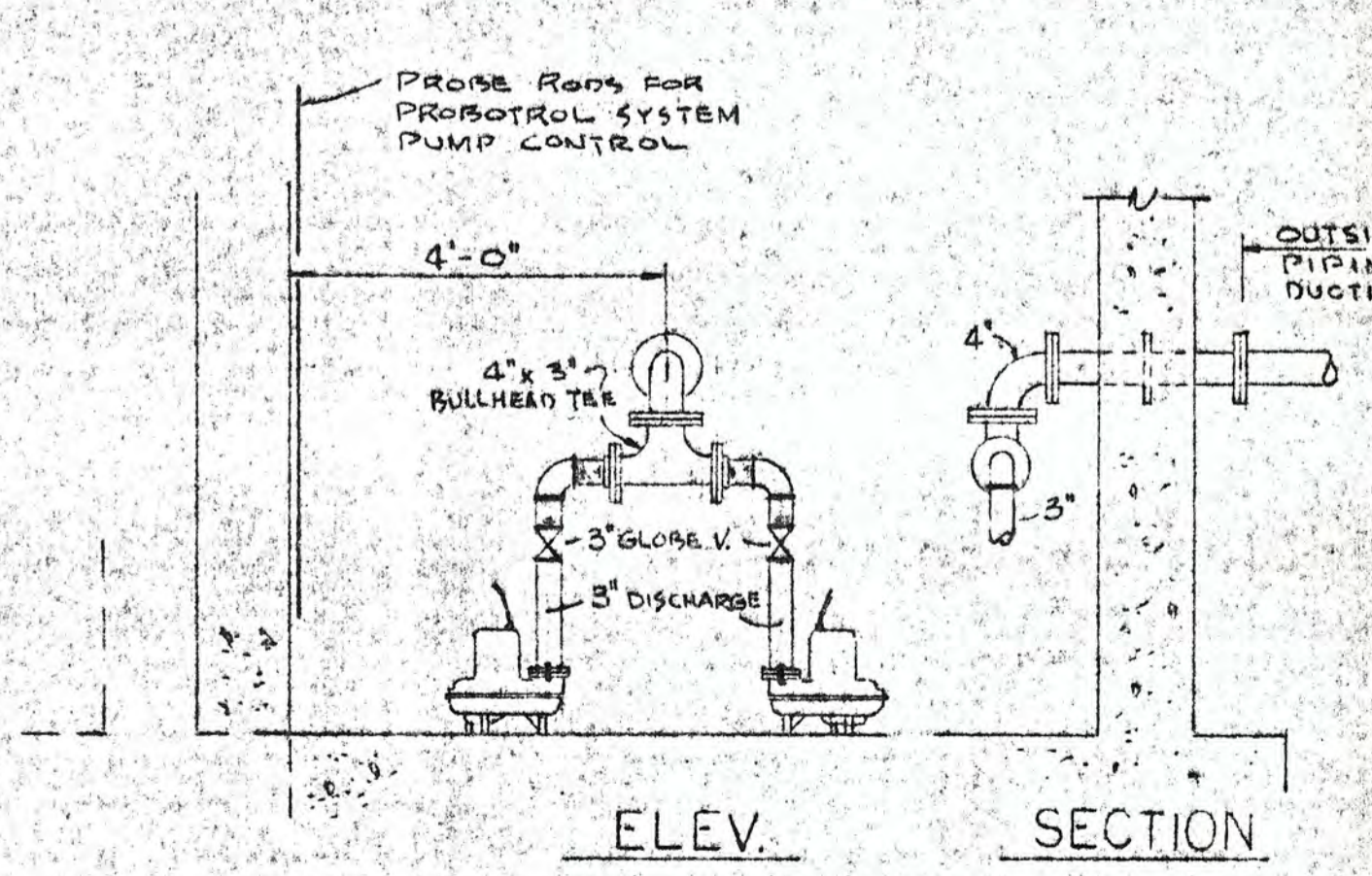
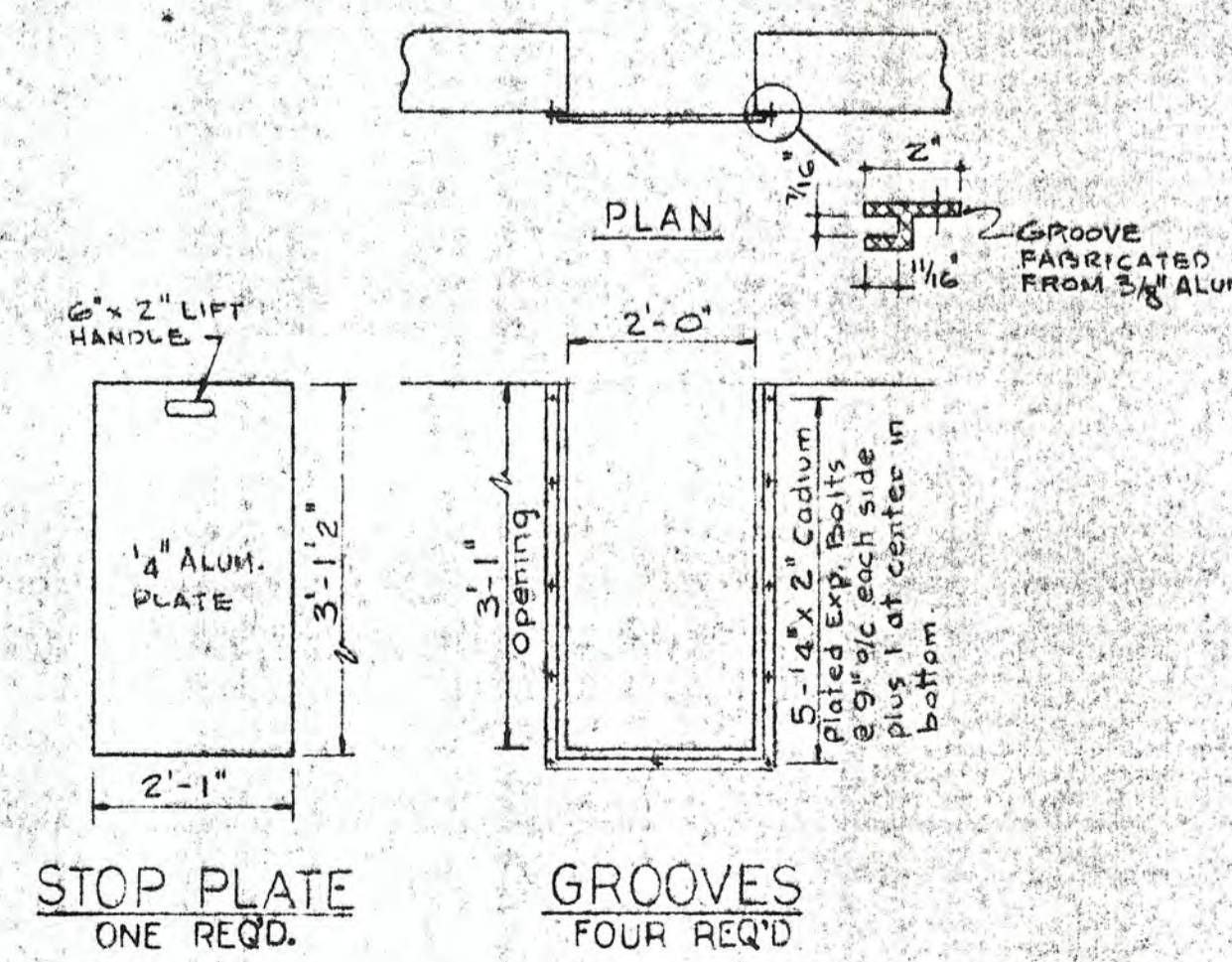
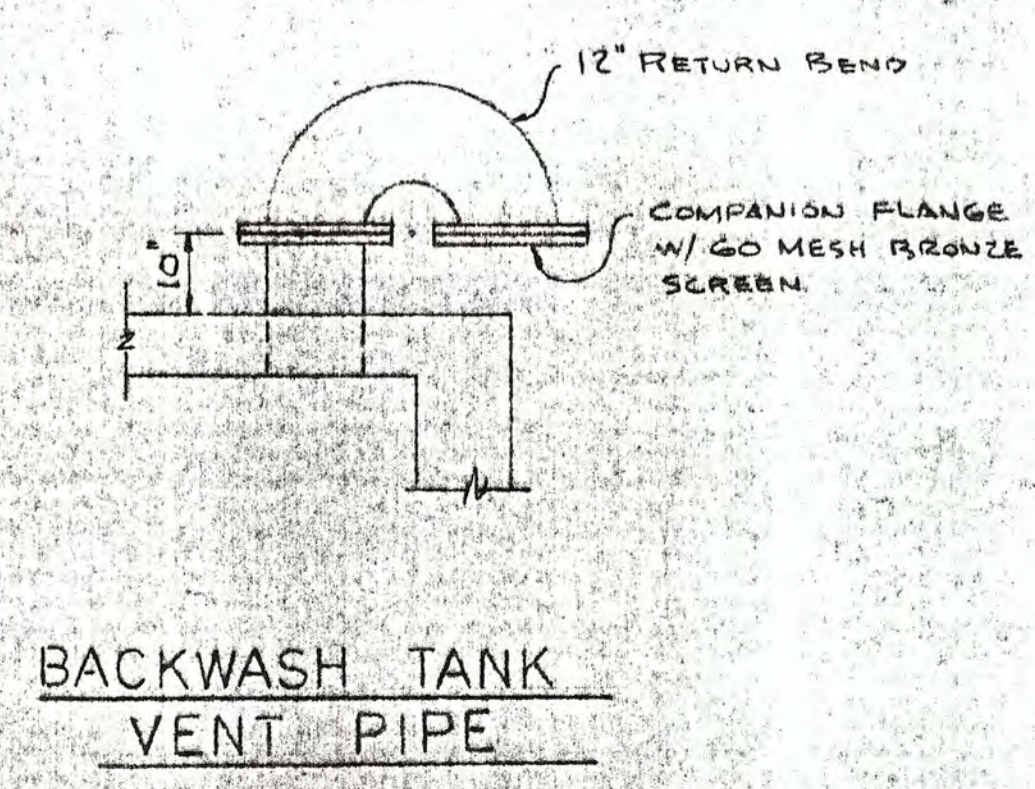
FOOTINGS AND BOTTOM SLAB SHALL BE PLACED ON FIRM UNDISTURBED EARTH, EXCEPT THAT A 2" TO 4" SAND LEVELING COURSE MAY BE USED. NO CONCRETE SHALL BE PLACED UNTIL THE ENGINEER HAS APPROVED THE EXCAVATION.

TOP SURFACES OF SLABS SHALL RECEIVE A STEEL TROWEL FINISH AS DIRECTED BY THE ENGINEER.

WATER SYSTEM IMPROVEMENTS IRON FILTRATION ADDITION ST. CHARLES, ILLINOIS		
SCALE: As Shown	WELL NO 7	DRAWN BY: G.J.
DATE:		REVISED:
STRUCTURAL - PLAN AND SECTIONS		
ROBERT H. ANDERSON & ASSOCIATES, INC. CONSULTING ENGINEERS ST. CHARLES, ILLINOIS		SHEET 6 OF 9



FENCING PLAN
OUTSIDE PIPING - PLAN & PROFILE
 SCALE: 1" = 10' HORI.
 1" = 5' VERT.



WATER SYSTEM IMPROVEMENTS IRON FILTRATION ADDITION ST. CHARLES, ILLINOIS			
SCALE: AS SHOWN	DATE:	WELL NO 7	DRAWN BY G.J. REVISED
FENCING, OUTSIDE PIPING, AND MISCELLANEOUS DETAILS			SHEET
ROBERT H. ANDERSON & ASSOCIATES, INC. CONSULTING ENGINEERS ST. CHARLES, ILLINOIS			7 of 8

