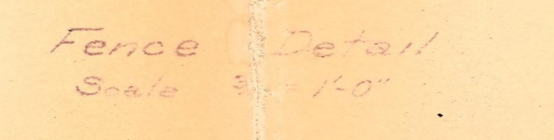


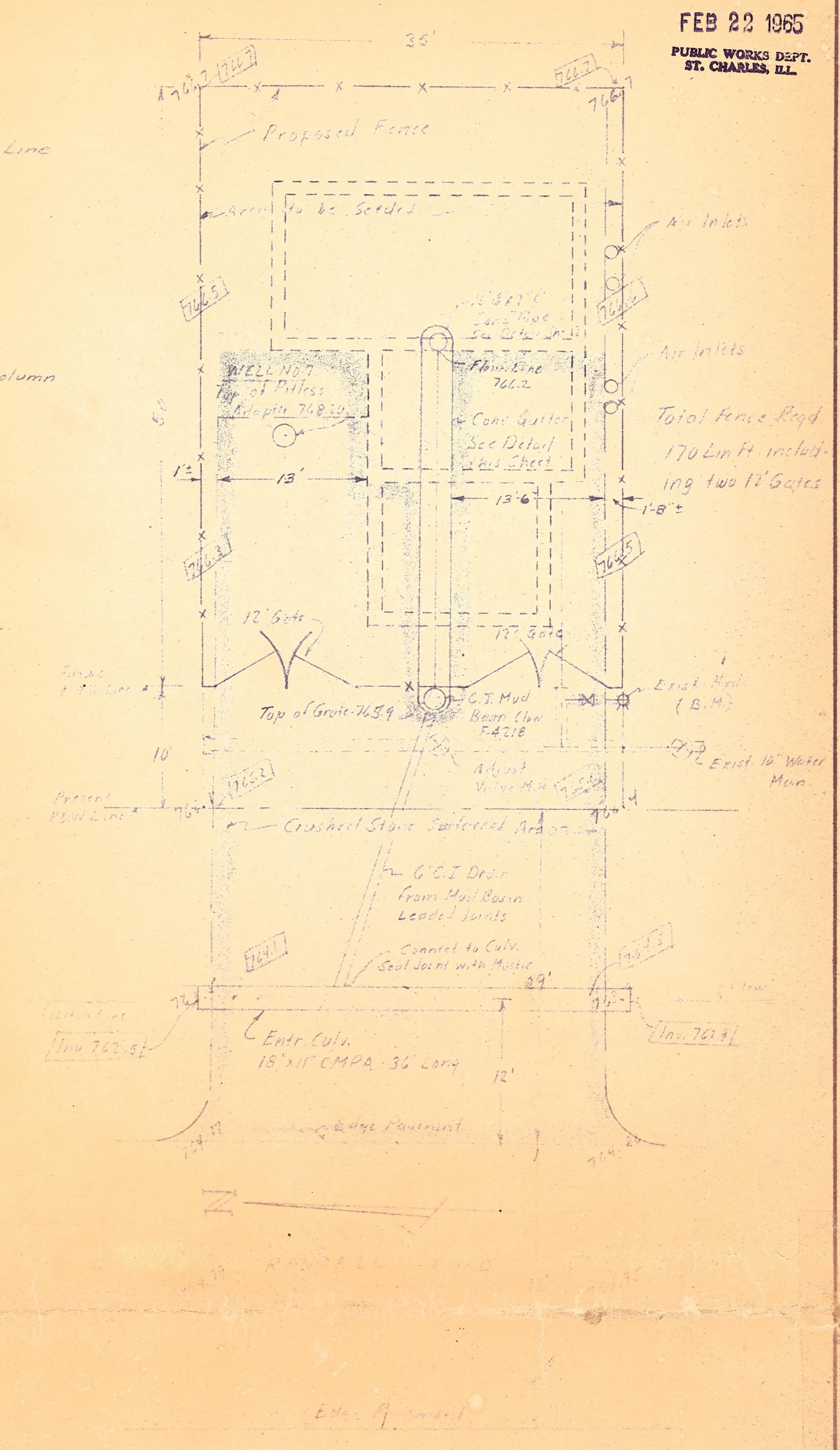
Base Plate Detail
1 1/2" x 1'-0"



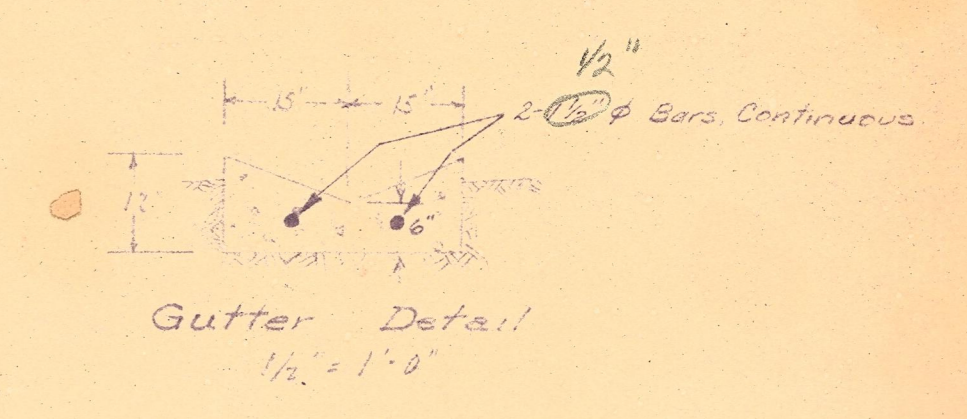
Fence Detail
Scale 1'-0"

GENERAL NOTES

- All work shall be in strict accordance with the plans and the Specifications and other Contract Documents. Written approval for changes and/or modifications shall be by the Owner.
- See Sheet No. 5 for Notes pertaining to Analytical.
- The basic equipment layouts shown on the Plans are for the furnishing and installing of Base and other major equipment. The Plans provide for alternate of major equipment items at the option of the Owner as in the Contract Documents. After equipment items are the contractor will coordinate with the Engineer to make adjustments in layouts.
- The City will award separate contracts for the furnishing and installing of the well pumping unit and for engine driven generating unit. Coordination with these contractors will be required. This pumping & generating units may be installed prior to completion of work on this contract. Contractor on this contract shall take necessary precautions to prevent damage to items installed by other contractors and shall be responsible for the repair of any damage by his contractors operations.
- Initial start of well pump motor will be done only after well pump contractor has been notified and in the presence of a representative of said contractor.
- Initial start of engine driven generating unit will be done only after that contractor has been notified and in the presence of a representative of said contractor.



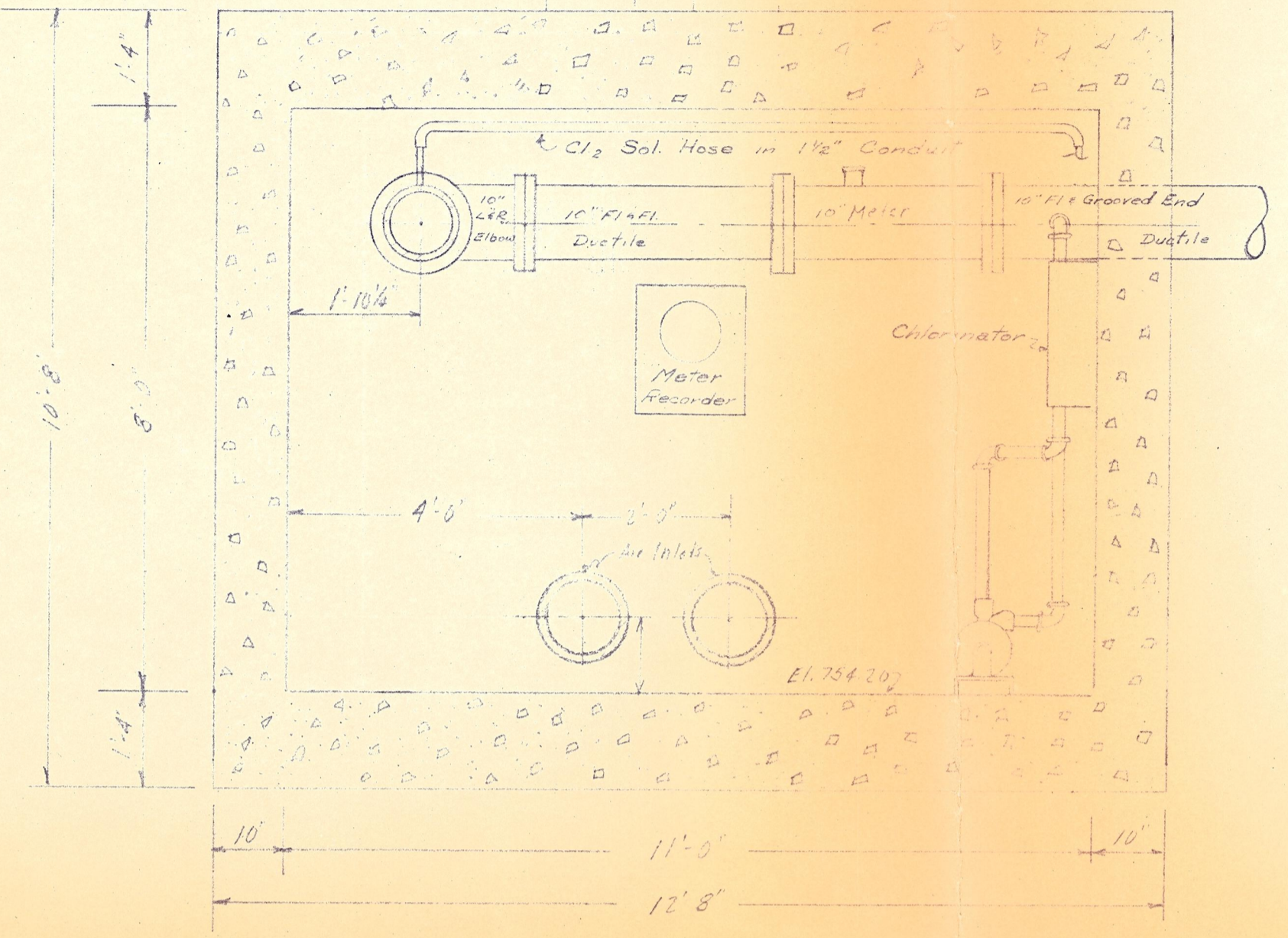
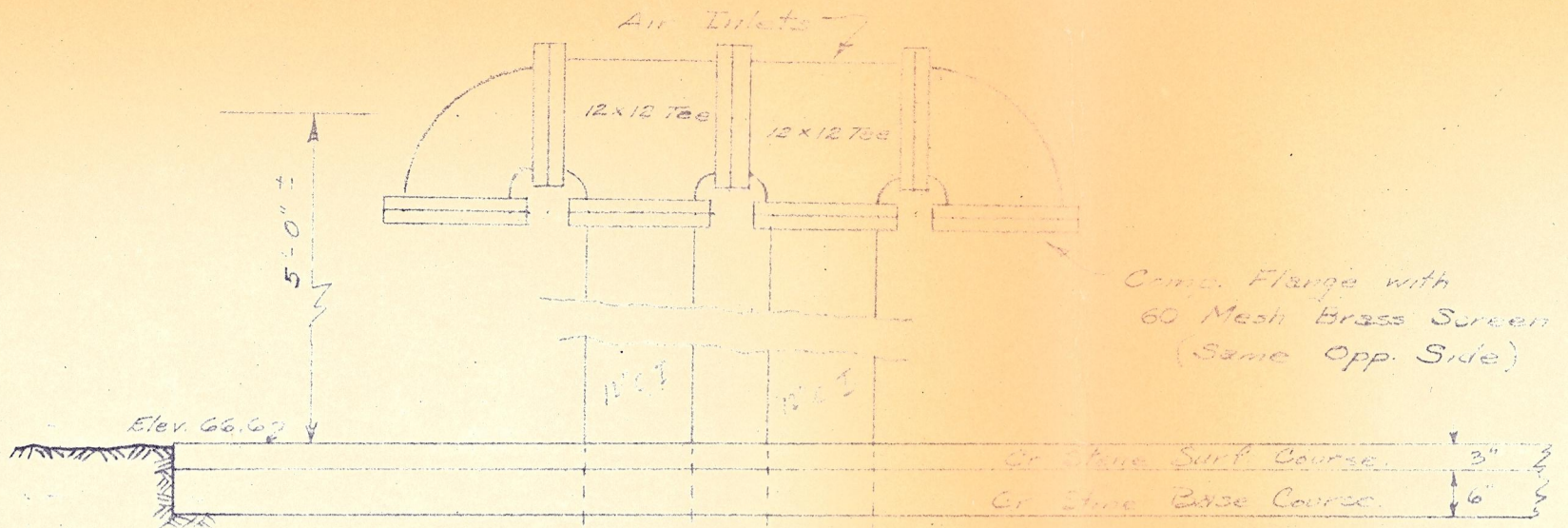
SITE PLAN
1" = 10'
Note: In the above site plan existing elevations are shown thru -75'-0". Crossed elevations are shown thru -87'-0". Bench mark is shown on East Fire Hydrant E.L. 74.3.90



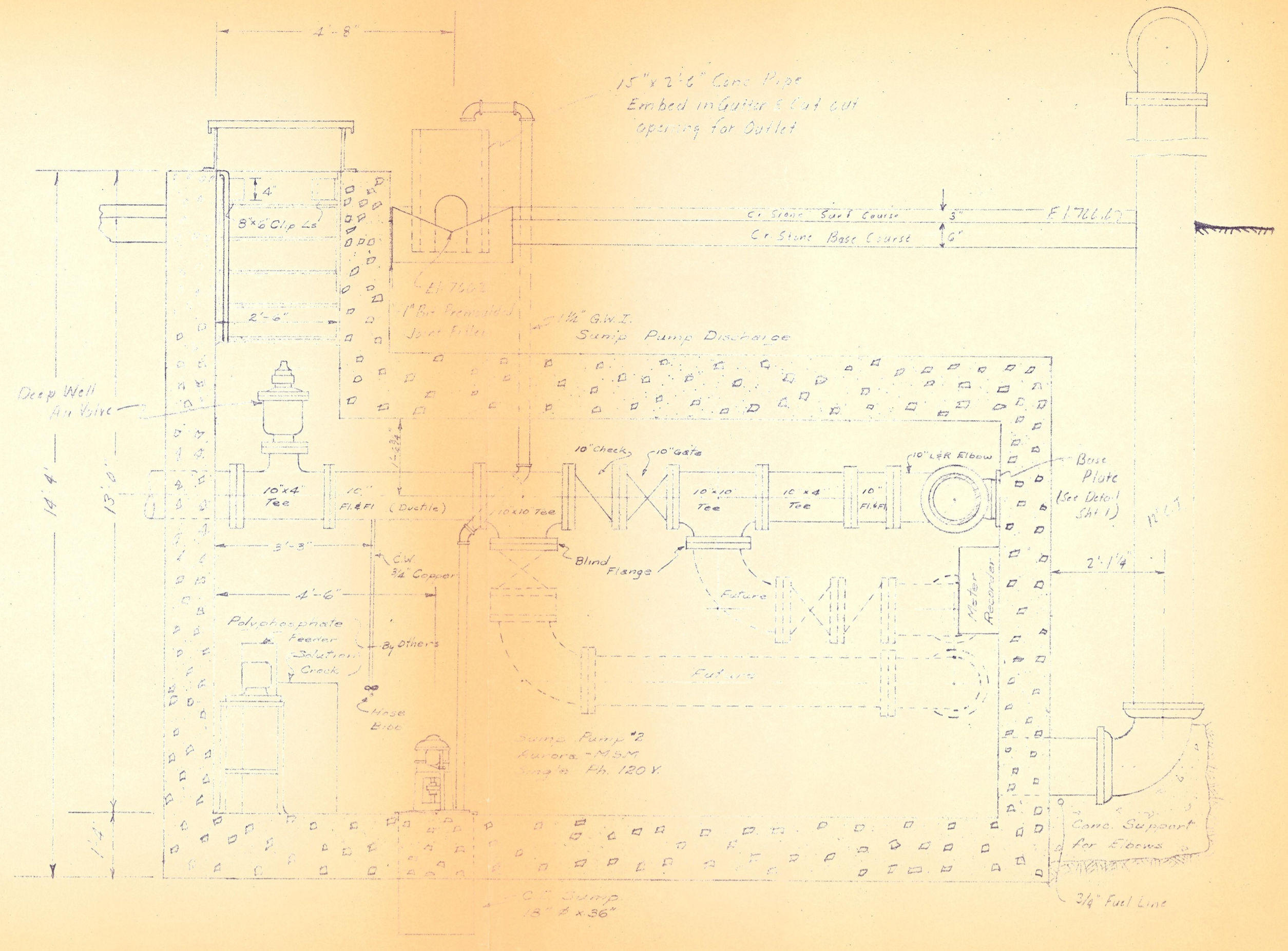
Gutter Detail
1 1/2" x 1'-0"

#7 well

CITY OF ST CHARLES ILLINOIS WATER SUPPLY IMPROVEMENTS		
SCALE: As Shown	WELL #7	DRAWN BY: JCD/RS
DATE:		REVISED:
GEN LAYOUT FLOOR PLANS AND DETAILS		
ROBERT H. ANDERSON, CONSULTING ENGR. ST. CHARLES, ILLINOIS		DRAWING NUMBER 125

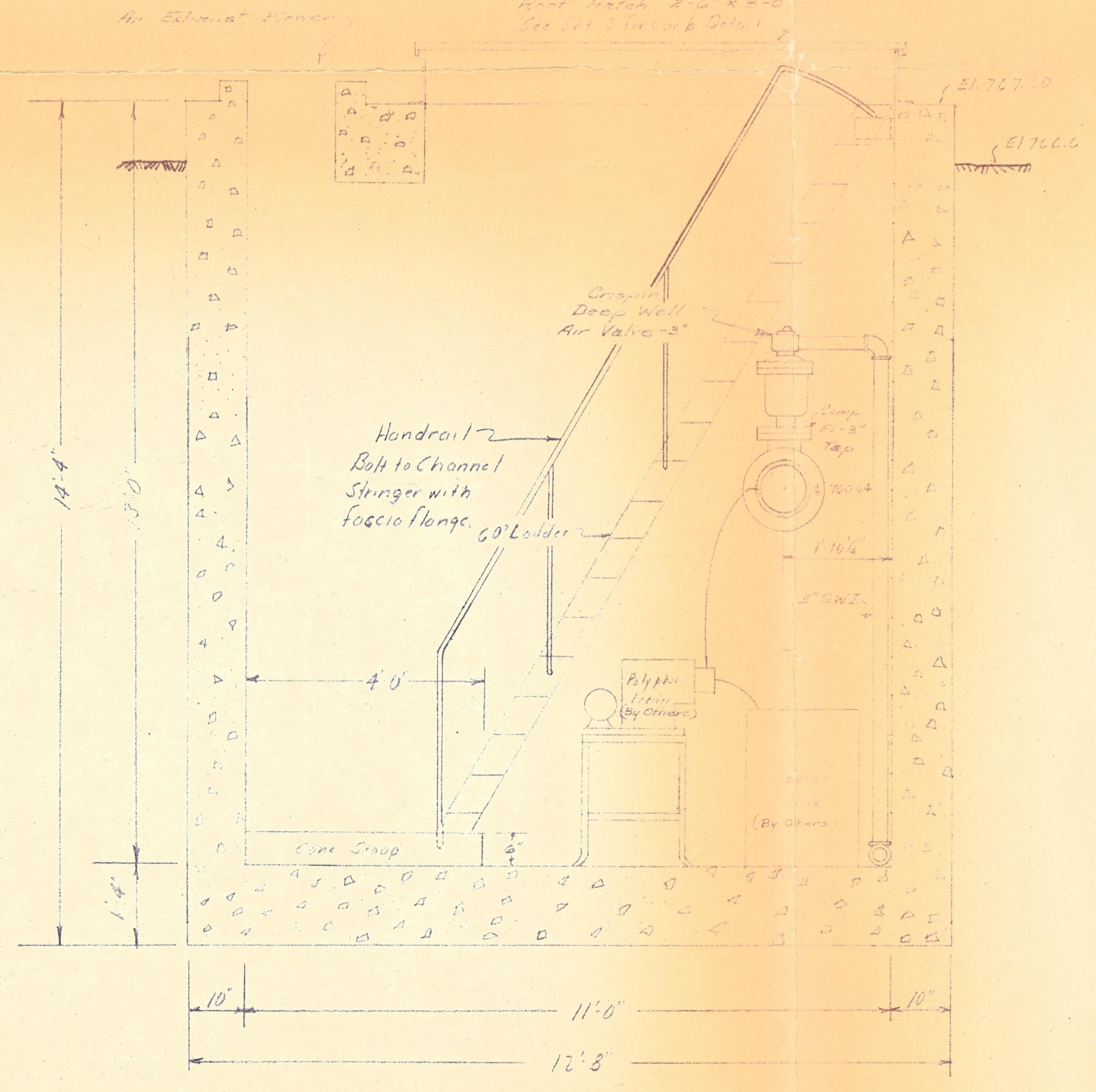


SEC. A-A
1/2" = 1'-0"

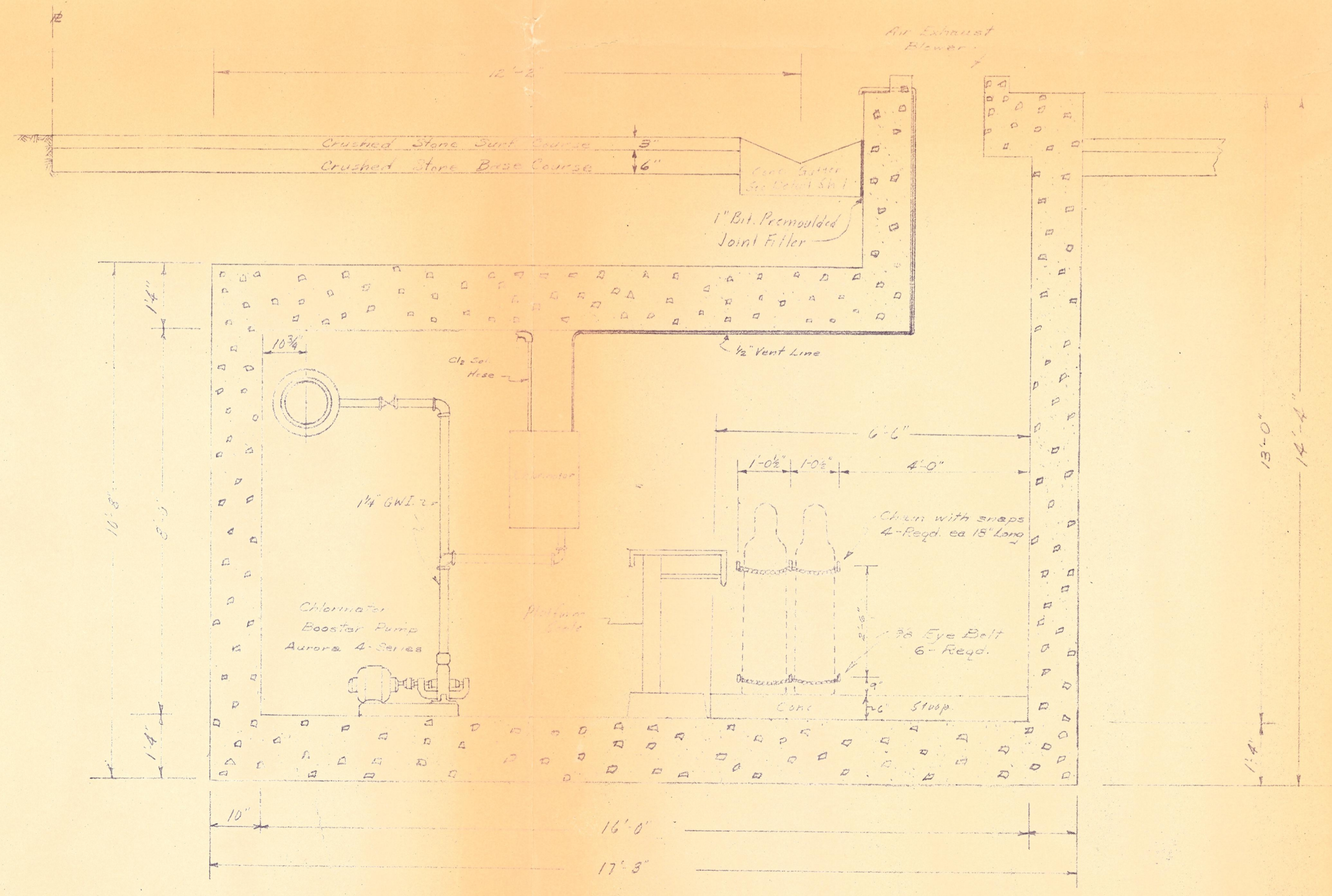


SEC. B-B
1/2" = 1'-0"

Note: See Sheet 8 for Structural & Reinforcement Details

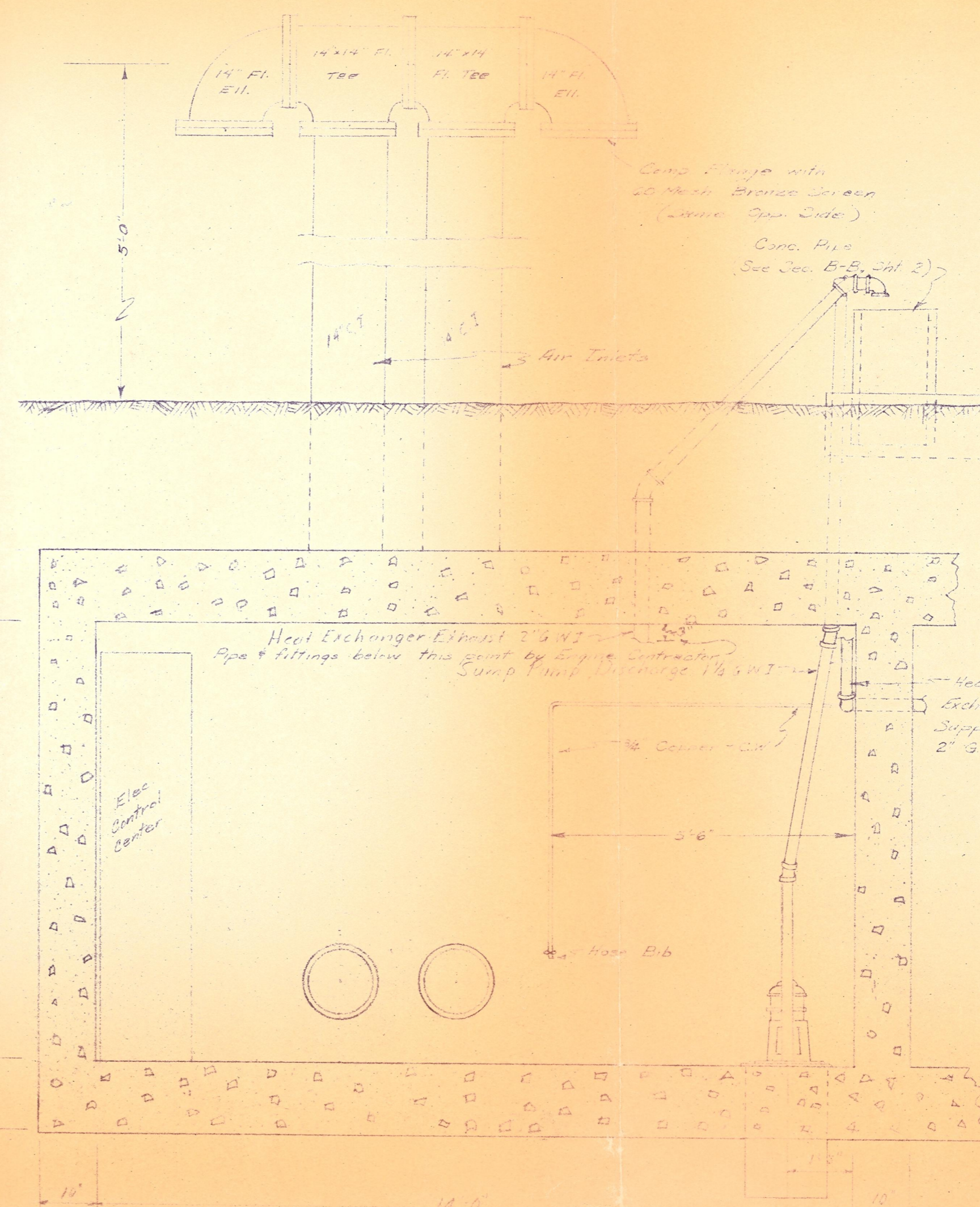
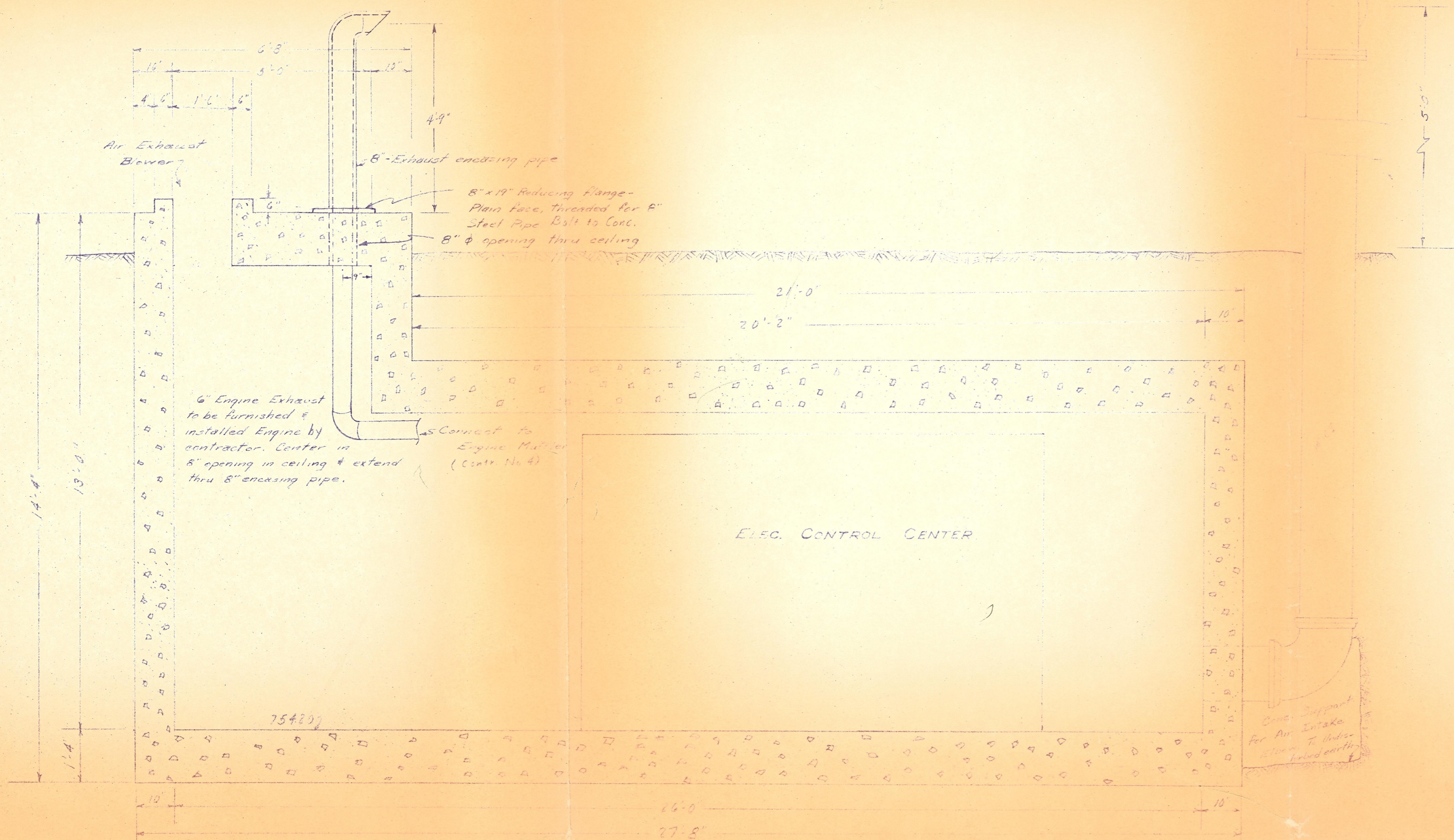


SEC. C-C
1/2" = 1'-0"



SEC. D-D
1/2" = 1'-0"

CITY OF ST. CHARLES, ILLINOIS		
WATER SUPPLY IMPROVEMENTS		
SCALE: As Shown	WELL #7	DRAWN BY: [Signature]
DATE:		REVISED:
TREATMENT AND METER VAULT		
SECTIONS AND DETAILS		
ROBERT H. ANDERSON, CONSULTING ENGR.		DRAWING NUMBER
ST. CHARLES, ILLINOIS		2 OF 5



NOTE: Various connections to Engine & Generator unit will be coordinated between General Contractor on Cont. No. 3 and the Engine & Generator Contractor on Contract No. 4. In general the Engineer of responsibility will be as follows:

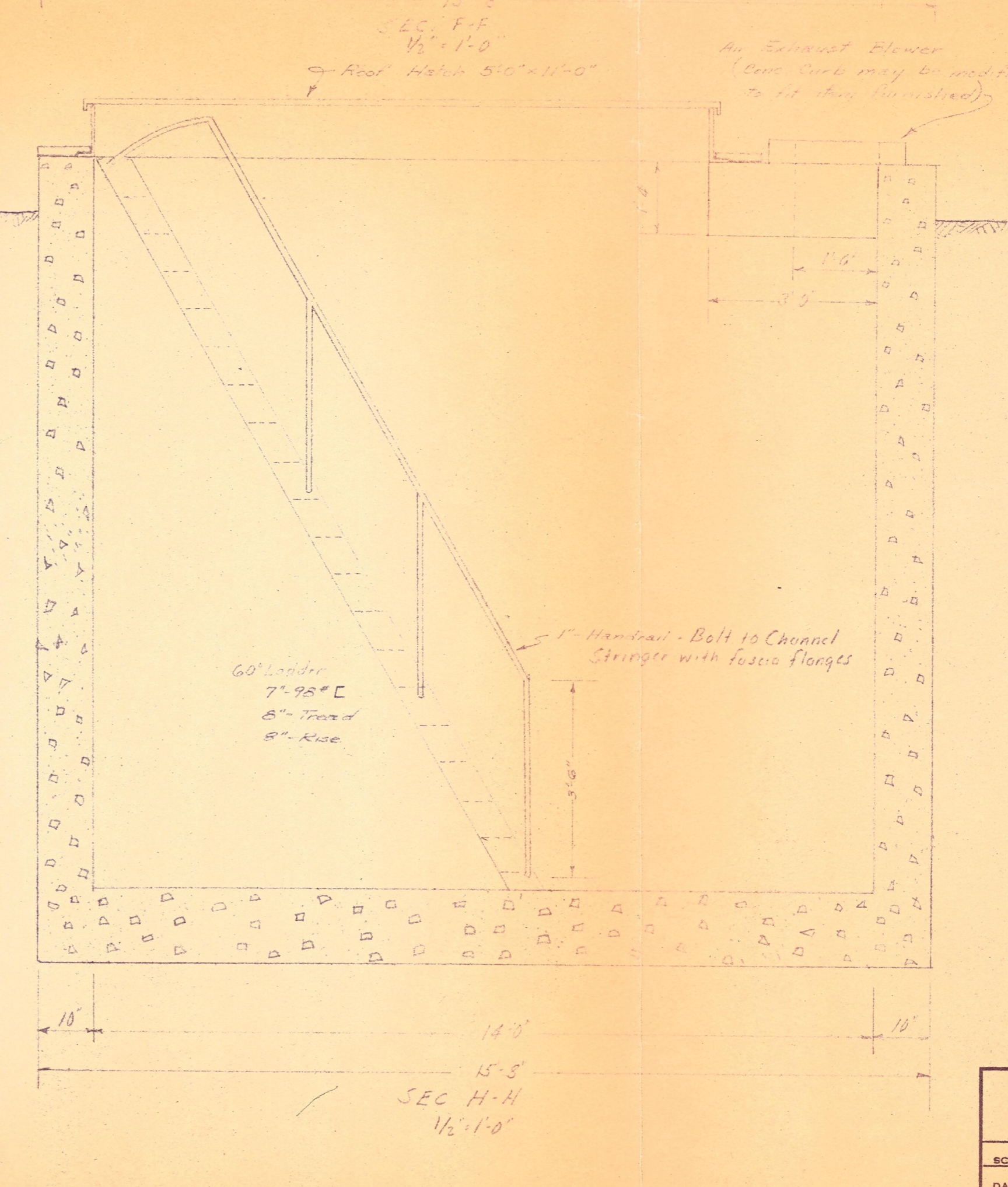
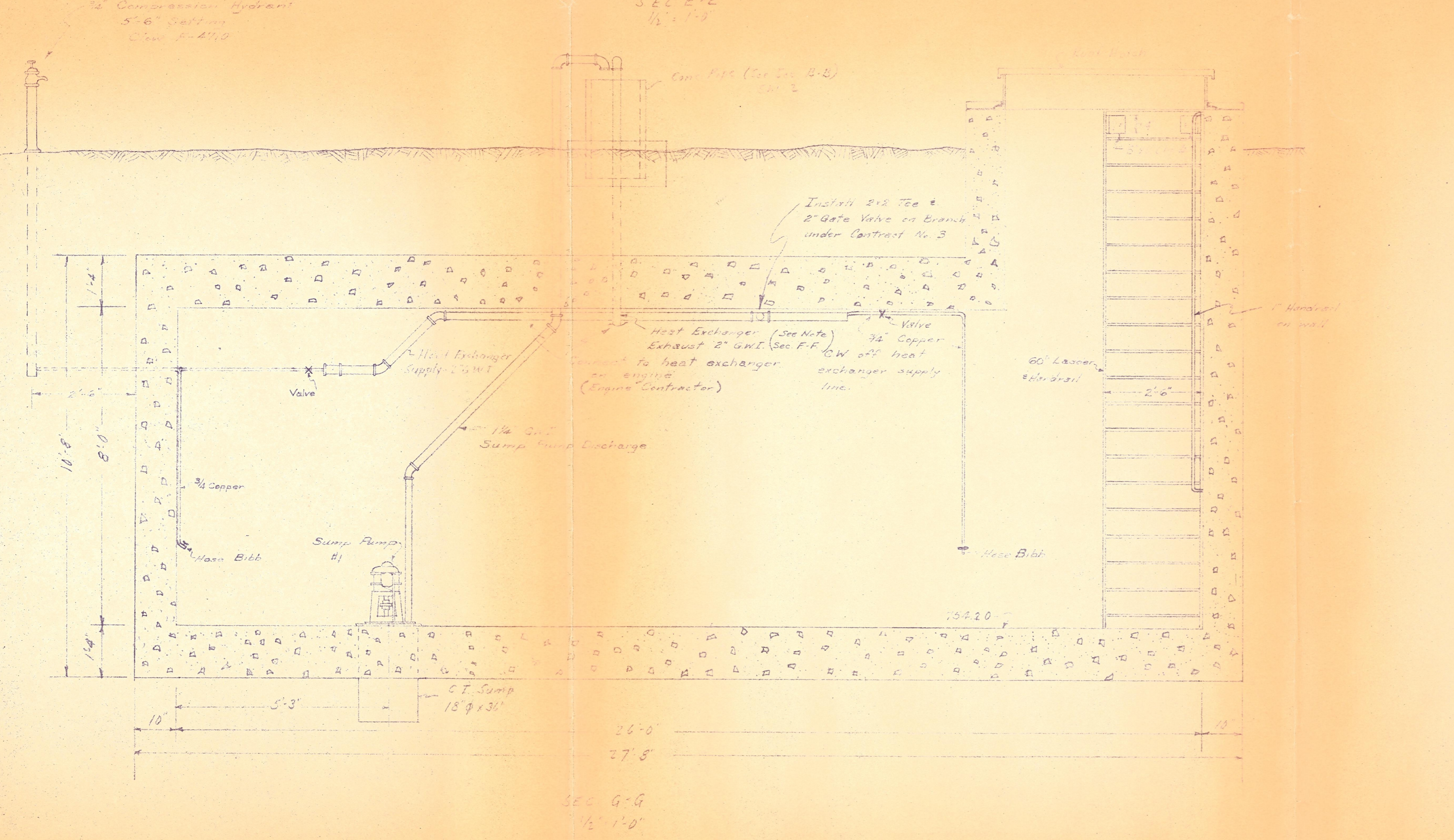
Fuel Line: Gen Contr. will furnish & install line from fuel tank to a point on west wall of Power & Control Vault 9'-2" N. of South wall, terminating with a gate valve. Engine Contractor will furnish & install line from gate valve on W wall to engine, including all required fittings & accessories.

Heat Exchanger Supply Line: General Contractor will furnish & install line from system in Treatment Vault to fittings on W wall of Power & Control Vault as shown. A 2" Tee with 2" Gate valve on branch will be provided. Engine Contractor will furnish & install line from Valve to heat exchanger, including all required fittings & accessories.

Heat Exchanger Exhaust Line: General Contractor will furnish & install line from 3" below ceiling of lower & Control Vault upwards to discharge at Conc. Pipe Sump. Engine Contractor will furnish & install line from Heat Exchanger discharge to end of pipe 3" below ceiling including all required fittings & accessories.

Engine Exhaust Line: General Contractor will furnish & install vertical section from approx. vault ceiling line upward through cover as shown in Sec. E-E. Engine Contractor will furnish & install Exhaust line, fittings & accessories for this.

Electrical Connections: See Notes and Details on Sheet No. 4

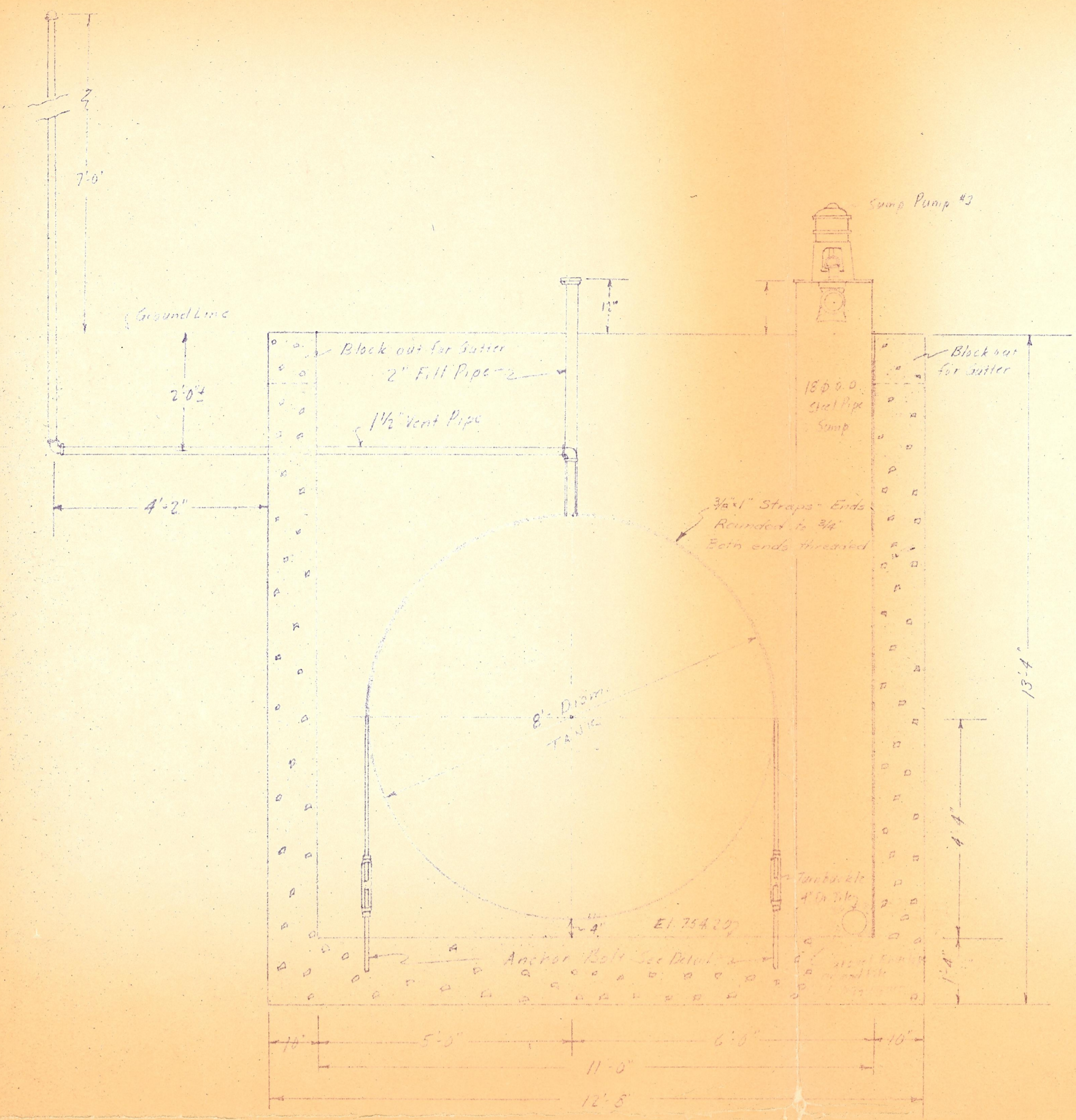


Roof Hatch Curb Detail 1/2" = 1'-0"

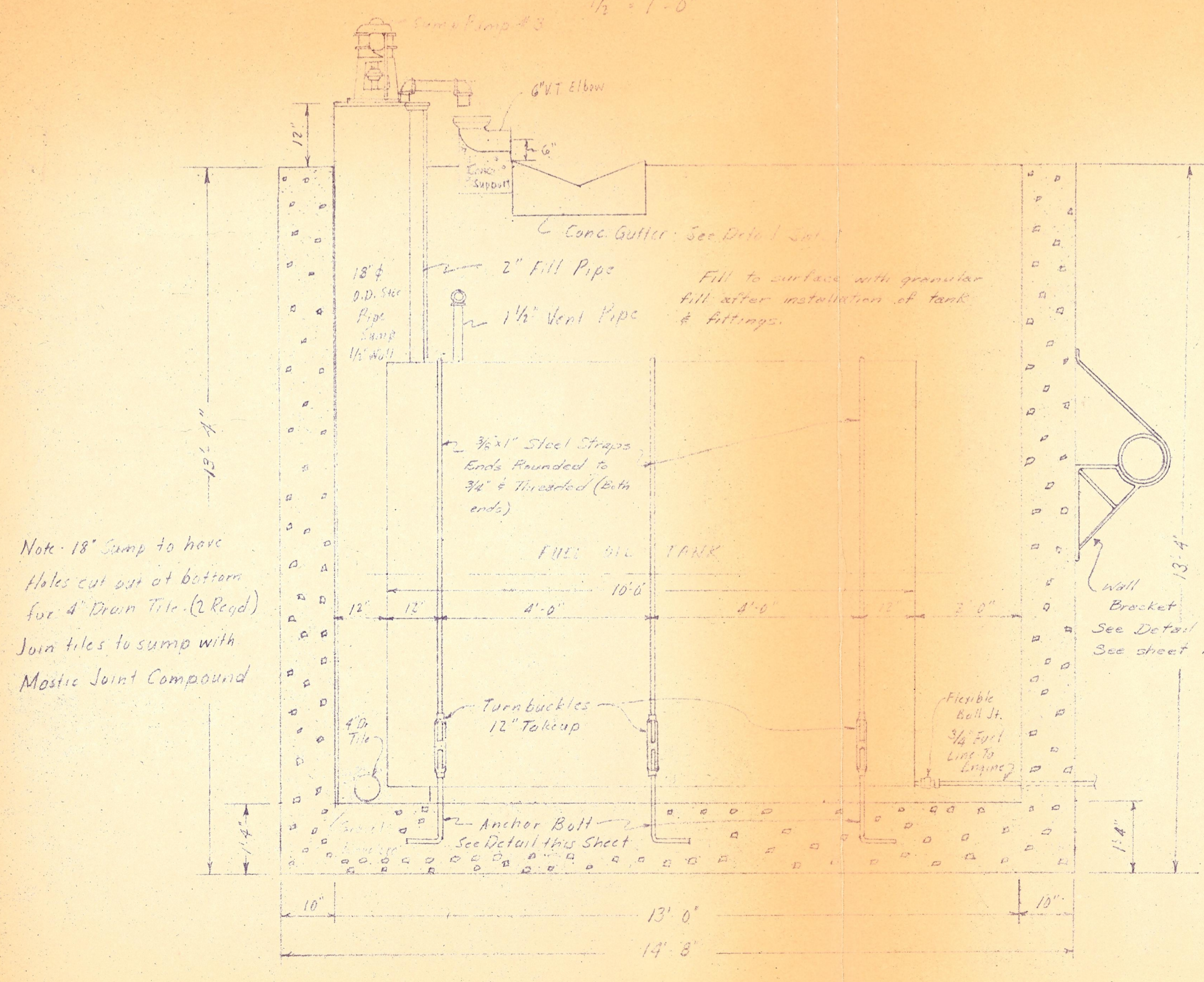
Hatch Wall
 Curb Bolt - Size & Spring per under Main Recommendation
 Bitumastic
 9" x 24" x 30" Galv. Channel Iron
 Bitumastic 5/16" x 1/4"
 5/8" x 10" Bolts @ 3'-0" o.c.
 Cadmium Plated

CITY OF ST. CHARLES, ILLINOIS			
WATER SUPPLY IMPROVEMENTS			
SCALE: As Shown	WELL # 7		DRAWN BY: [Signature]
DATE:			REVIEWED:
SECTIONS AND DETAILS POWER AND CONTROL VAULT			
ROBERT H. ANDERSON, CONSULTING ENGR. ST. CHARLES, ILLINOIS			DRAWING NUMBER 3 of 5

NOTE: See specs & notes on sheet 3 for outline of responsibilities by various contractors. On electrical, General Contractor will furnish & install all controls, wiring etc. except for Generator Control Panel & wiring for Gen Control Panel to Generator Set & accessories furnished with same. Engine & Generator Contractor will furnish all material, labor etc. for these & will be responsible for connecting generator to other units of electric control panel.

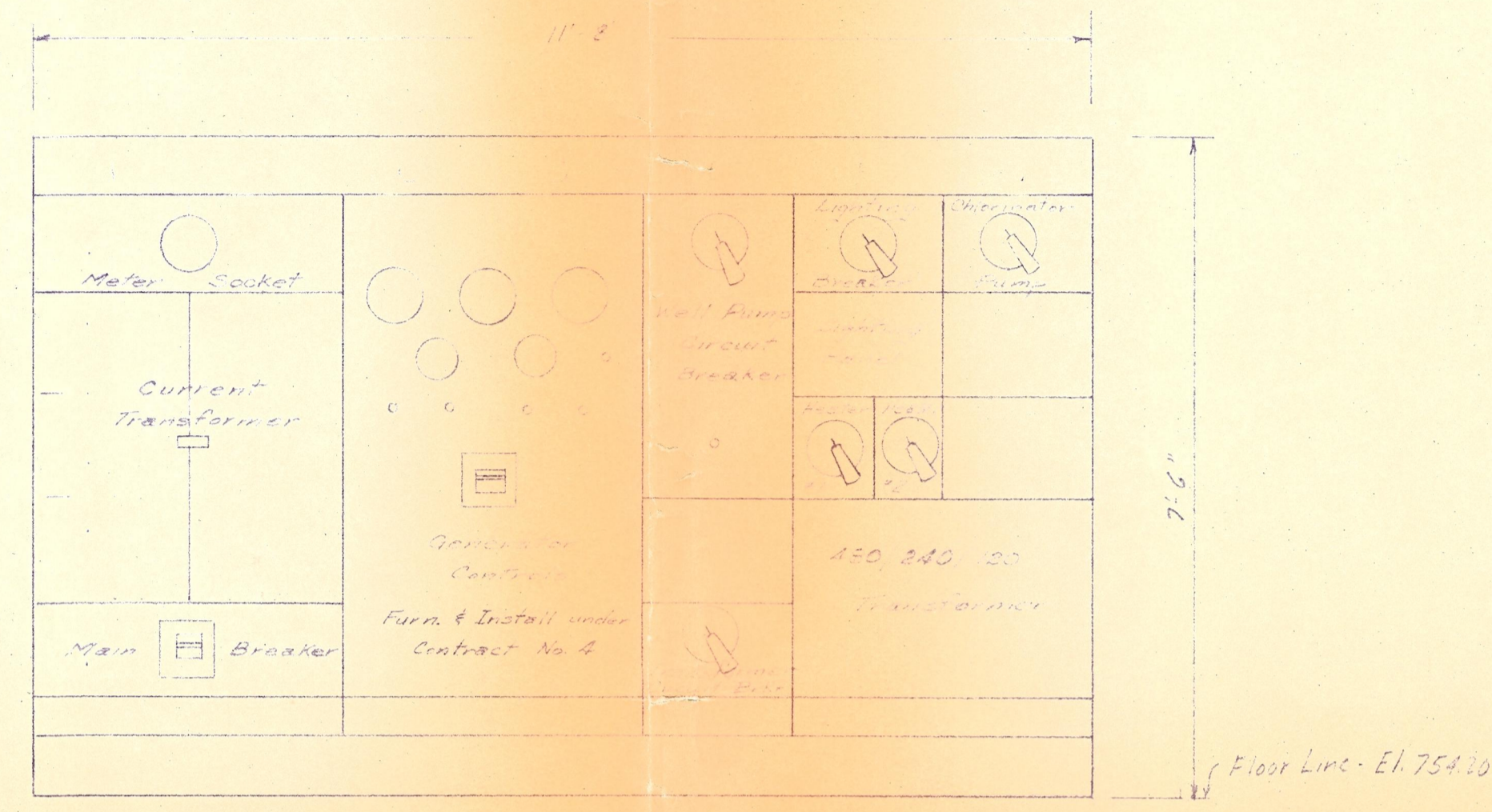


SEC. I-I
1/2" = 1'-0"

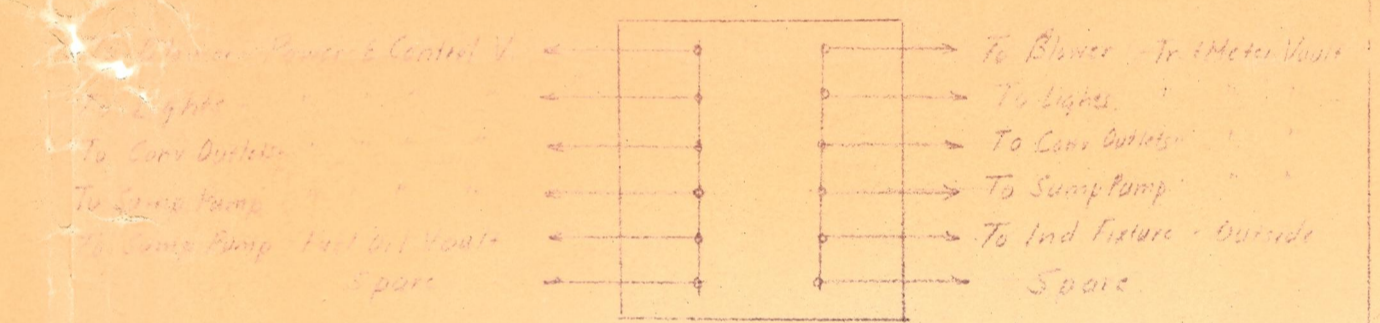


Note: 18" Sump to have holes cut out at bottom for 4" Drain Tile (2 Req'd) Join tiles to sump with Mastic Joint Compound

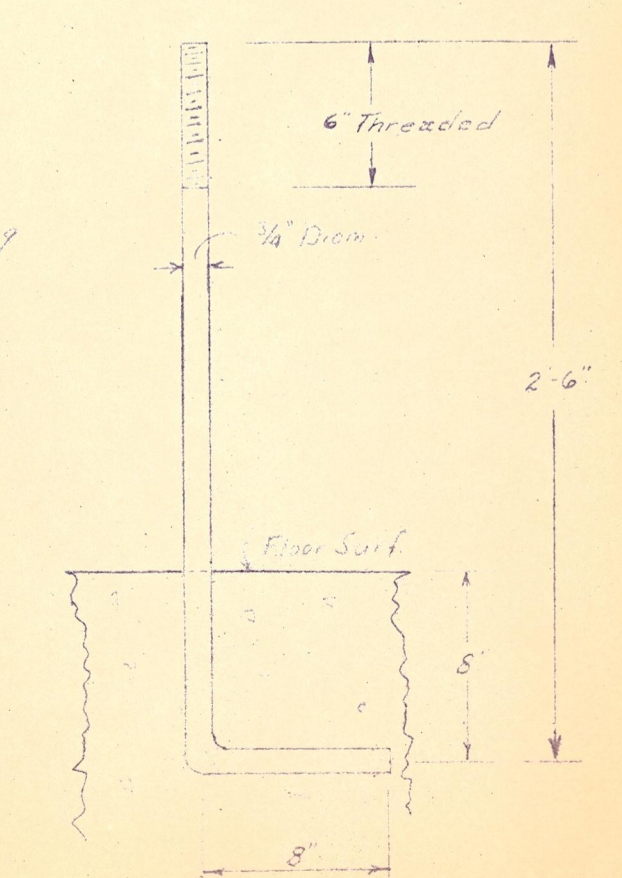
SEC. J-J
1/2" = 1'-0"



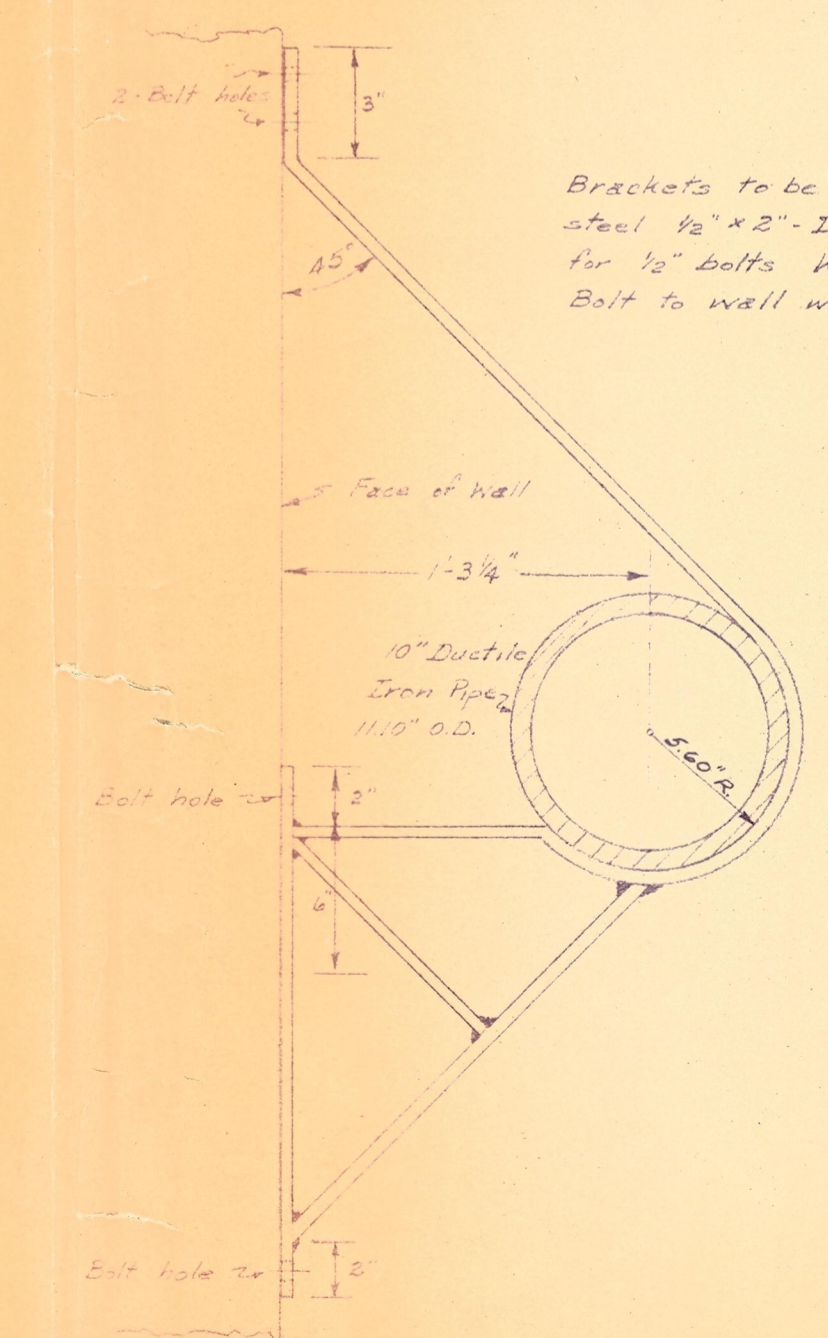
ELECTRIC & GENERATOR CONTROL PANEL
To be furnished & installed under Contract No. 3, except as shown
No Scale



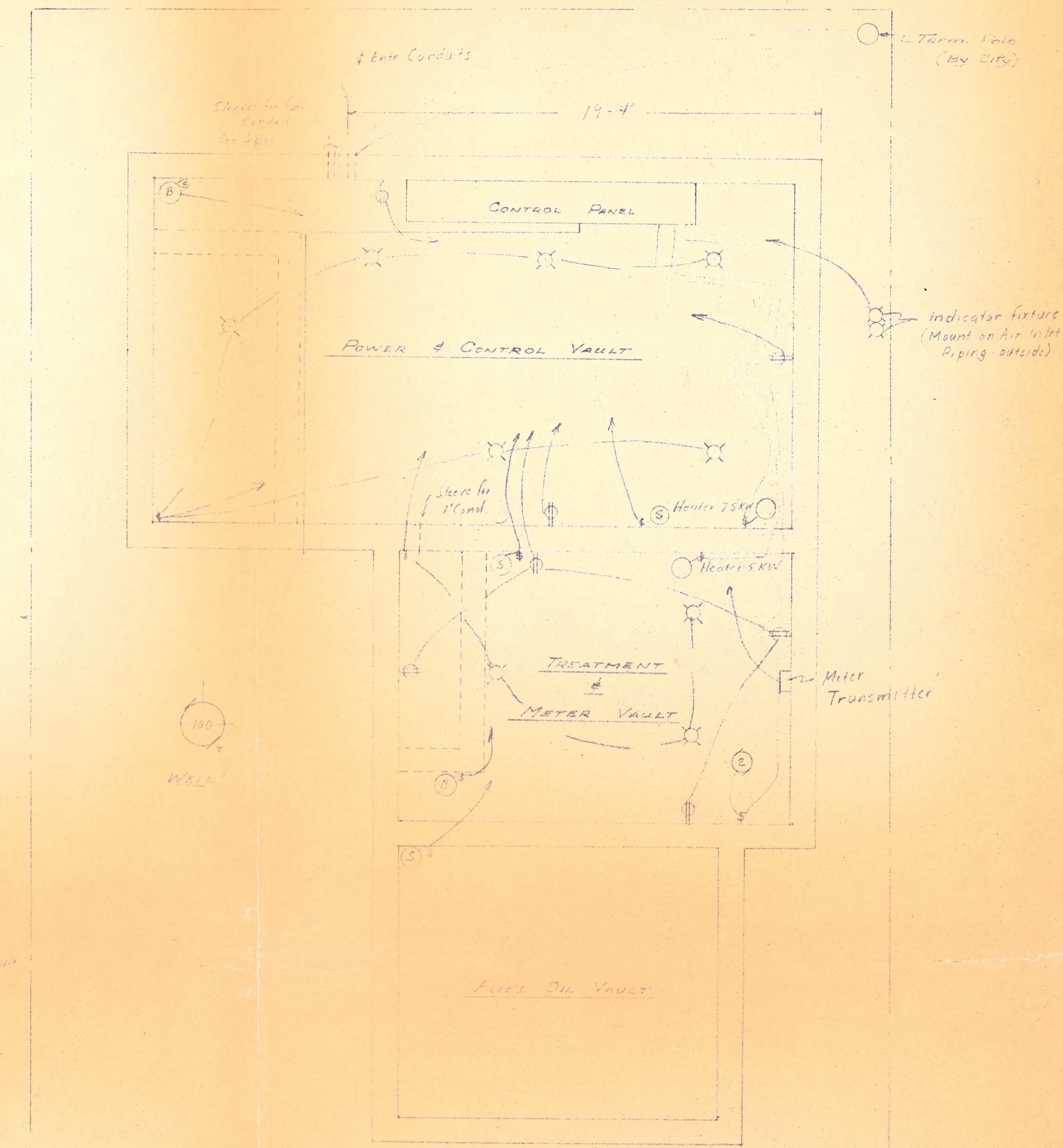
LIGHTING PANEL
No Scale



ANCHOR BOLT DETAIL
FUEL OIL VAULT
1/2" = 1'-0"



WALL BRACKET DETAIL
1/2" = 1'-0"



ELECTRICAL LAYOUT
1/2" = 1'-0"

CITY OF ST. CHARLES, ILLINOIS WATER SUPPLY IMPROVEMENTS		
SCALE: As Shown	WELL #7	DRAWN BY: [Signature]
DATE:		REVISED:
FUEL OIL VAULT - ELECTRICAL LAYOUT SECTIONS AND DETAILS		
ROBERT H. ANDERSON, CONSULTING ENGR. ST. CHARLES, ILLINOIS		DRAWING NUMBER 4 of 5