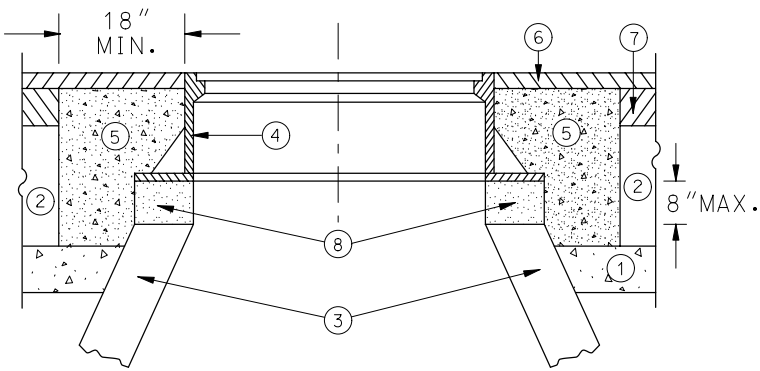


LEGEND

- ① SUB-BASE GRANULAR MATERIAL
- ② EXISTING PAVEMENT
- ③ EXISTING STRUCTURE
- ④ FRAME AND LID (SEE NOTES)
- ⑤ CLASS S1 CONCRETE
- ⑥ PROPOSED HMA SURFACE COURSE
- ⑦ PROPOSED HMA BINDER COURSE
- ⑧ PROPOSED MORTAR, STEEL SHIMS & ADJUSTING RINGS 8" MAXIMUM
- ⑨ FULL DEPTH SAW CUT



NOTES:

EXISTING FRAMES AND LIDS SHALL BE REMOVED AND RETURNED TO THE CITY OF ST. CHARLES BY THE CONTRACTOR AND SHALL BE REPLACED AS DIRECTED BY THE ENGINEER.

CITY OF ST. CHARLES CASTINGS ARE THE PROPERTY OF THE CITY AND THE CONTRACTOR SHALL NOTIFY THE CITY OF REMOVAL AND DISPOSITION OF THE CASTINGS.

INSTALLATION OF NEW OR ADJUSTMENTS TO EXISTING FRAMES & LIDS WILL NOT BE PAID FOR SEPARATELY BUT ARE INCLUDED AS PART OF THE COST PER EACH ARE INCLUDED AS PART OF THE COST PER EACH ADJUSTED, SPECIAL".

CONSTRUCTION PROCEDURES

STAGE 1 (AFTER PAVEMENT MILLING AND PLACEMENT OF HMA BINDER)

- A) FULL DEPTH SAW CUT 5' X 5' SQUARE OR DIAMOND AROUND CENTER OF FRAME TO BE ADJUSTED
- B) REMOVE FRAME, EXISTING PAVEMENT AND AGGREGATE MATERIAL TO A DEPTH OF 2" BELOW TOP OF MANHOLE STRUCTURE OR 2" BELOW BOTTOM OF LOWEST ADJUSTMENT RING.
- C) ADJUST NEW FRAME TO MATCH PROPOSED HMA PAVEMENT SURFACE GRADE USING MORTAR, STEEL SHIMS EMBEDDED IN MORTAR, AND PRECAST CONCRETE ADJUSTING RINGS.
- D) COMPACT EXISTING AGGREGATE STONE BASE.
- E) FILL 5'X5' SURROUNDING SPACE WITH IDOT APPROVED CLASS S1 CONCRETE TO THE SAME ELEVATION OF THE TOP OF THE BINDER COURSE.
- F) PAVE SURFACE COURSE OVER 5' X 5' CONCRETE COLLAR.

THE PROCEDURE EXPLAINED ABOVE SHALL CONFORM TO THE APPLICABLE PORTIONS OF SECTIONS 353, 406, 602, AND 603 OF THE STANDARD SPECIFICATIONS

NOT TO SCALE

FRAME
AND LID
ADJUSTMENT
WITH
CONCRETE
COLLAR

DATE: 12-8-10