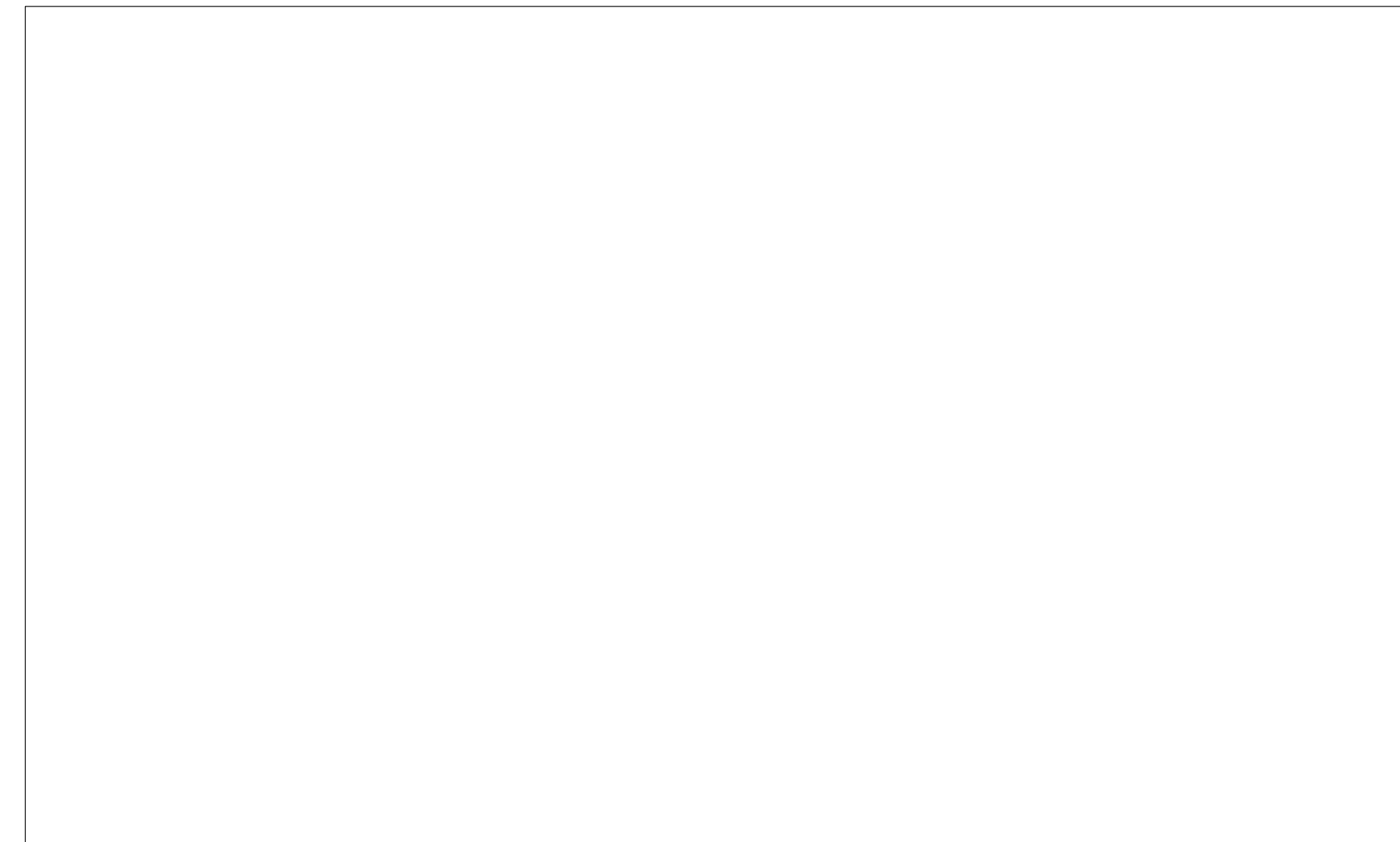


Andy's Frozen Custard - Canopy Prototype

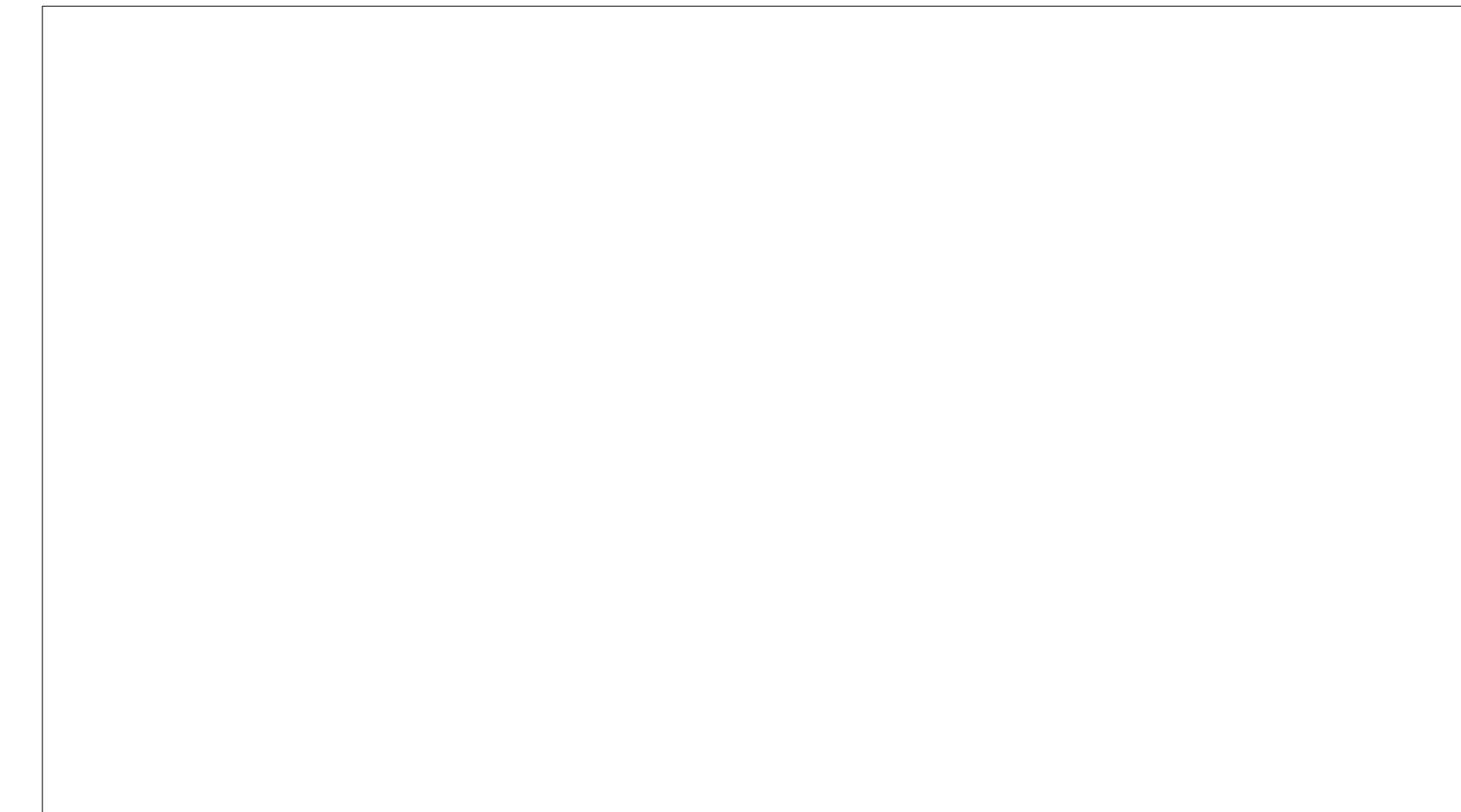
Project Address

PROJECT STATUS | 02/23/2022

SITE PLAN:



LOCATION PLAN:



PROJECT INFORMATION:
ANDY'S FROZEN CUSTARD,
CANOPY PROTOTYPE

OWNER:
ANDY'S FROZEN CUSTARD
211 E. Water Street
Springfield, MO 65806
www.eatandys.com

ARCHITECT:
HUFFT
3612 Karnes Boulevard
Kansas City, MO 64111
P: 816-531-0200
www.hufft.com

STRUCTURAL:
METTEMAYER ENGINEERING, LLC
2225 W. Chesterfield Blvd., Suite 300
Springfield, MO 65807
P: 417-890-8002

CIVIL:

MEP:
RTM ENGINEERING CONSULTANTS
3333 E. Battlefield Road, Suite 1000
Springfield, MO 65804
P: 417-881-0020

LANDSCAPE ARCHITECT:

PROJECT DIRECTORY:

ARCHITECT / INTERIOR DESIGNER:

3612 Karnes Blvd.
Kansas City, Missouri 64111
P: 816-531-0200

Contact: Marian Soga
Email: msoga@hufft.com

STRUCTURAL ENGINEER:

Mettemeyer Structural

2225 W. Chesterfield Blvd. Suite 300
Springfield, MO 65807
P: 417.890.8002

CONTACT: Branden Warden

CLIENT CONTACT:

Andy's Frozen Custard

211 E. Water Street
Springfield, MO, 65806
P: 417-881-3500

Contact: Kevin Clark
Email: kevin.clark@eatandys.com

M.E.P. ENGINEER:

RTM Engineering Consultants

3333 East Battlefield Road, Suite 1000
Springfield, MO 65804
P: 417.881.0020

CONTACT: Cameron Collins

SHEET INDEX

GENERAL

G000 COVER SHEET/DRAWING INDEX
G010 PROJECT DATA/ LIFE SAFETY

CIVIL

LANDSCAPE

ARCHITECTURAL

A001 GENERAL NOTES
A002 TYP. MOUNTING HEIGHTS
A010 ARCHITECTURAL SITE PLAN
A011 SITE SIGNAGE
A020 AXON 3D VIEWS
A101 FLOOR PLAN
A102 EQUIPMENT & FURNISHINGS PLAN
A103 DIMENSIONED PLUMBING PLAN
A104 ROOF PLAN
A105 REFLECTED CEILING PLAN
A106 DRIVE THRU CANOPY
A107 Unnamed
A108 Unnamed
A301 ELEVATIONS
A302 ELEVATIONS
A303 ELEVATIONS
A401 SECTIONS
A402 SECTIONS
A501 WALL SECTIONS
A502 WALL SECTIONS
A503 DETAILS - DRIVE THRU CANOPY
A504 DETAILS - PATIO CANOPY
A505 DETAILS - EXTERIOR
A506 DETAILS - EXTERIOR
A507 DETAILS - SITE
A508 DETAILS - INTERIOR
A601 FINISH PLAN
A602 PATIO & INTERIOR ELEVATIONS
A603 INTERIOR ELEVATIONS
A604 INTERIOR ELEVATIONS
A701 SCHEDULES AND DETAILS
A702 STOREFRONT ELEVATIONS

STRUCTURAL

S000 GENERAL NOTES
S002 TYPICAL DETAILS
S100 FOUNDATION PLAN
S200 FOUNDATION DETAILS
S300 ROOF FRAMING PLAN
S301 CANOPY FRAMING PLAN
S400 FRAMING DETAILS

MECHANICAL, ELECTRICAL, PLUMBING

ME1 SITE PHOTOMETRIC PLAN
ME2 MEP SITE PLAN
ME3 MEP SPECIFICATIONS
ME4 MEP SYMBOLS LEGEND
M1 FIRST FLOOR HVAC PLAN
M2 HVAC DETAILS AND SCHEDULES
P1 UNDERGROUND PLUMBING PLAN
P2 FIRST FLOOR PLUMBING PLAN
P3 PLUMBING DETAILS AND SCHEDULES
E1 LIGHTING PLAN
E2 POWER PLAN
E3 SPECIAL SYSTEMS PLAN
E4 ELECTRICAL SCHEDULES AND DETAILS
E5 ELECTRICAL SCHEDULES

ISSUE:
PROJECT STATUS
04/20/2022

REVISION SCHEDULE:
NO. DATE ISSUE

THIS DRAWING WAS PREPARED under the Architect's supervision, and is an "Instrument of Service." Intended solely for use by our Client on this project. The Architect disclaims responsibility for the existing building structure, existing site conditions, existing construction elements, and drawings or documents not signed and sealed by the Architect. The information, ideas and designs indicated including the overall form, arrangement and composition of spaces or building elements - constitutes the original, confidential, and unpublished Work and property of the Architect. Receipt or possession of this Drawing confers no right in, or income or disclosure to others the subject matter contained herein for any but authorized purposes. Unauthorized reproduction, distribution or dissemination in whole or in part - is strictly prohibited. All rights reserved © 2022 by Hufft Projects LLC.

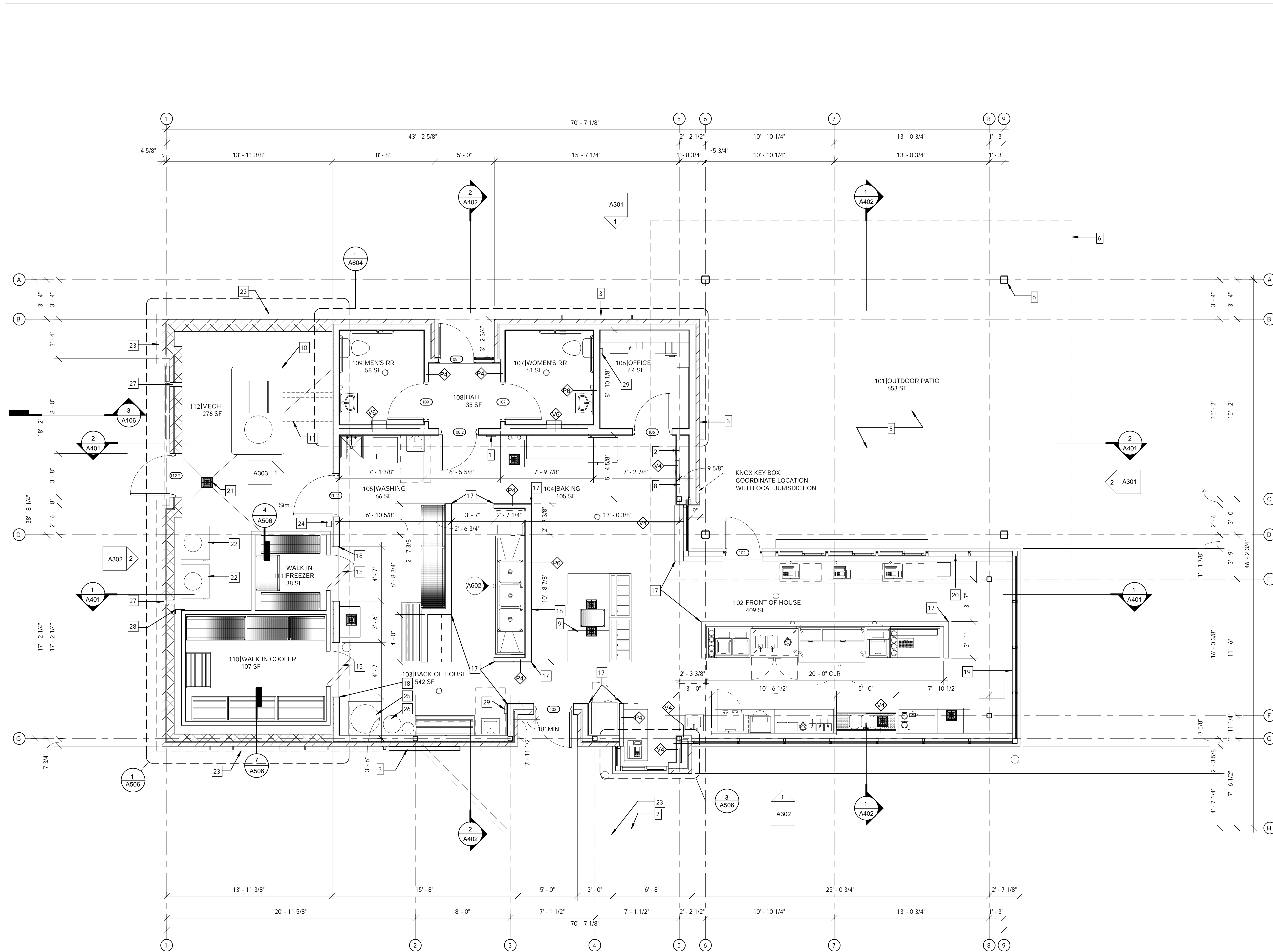
THIS DRAWING MAY BE PART of an integrated set of Construction Documents, including the Contract, the Conditions and the Specifications. The Contract Documents are complementary. What is required by one is as binding as if required by all. Application of a material or equipment item to Work installed by others constitutes acceptance of that Work. Calculate and measure dimensions. - DO NOT SCALE DRAWINGS unless directed by the Architect to do so. Dimensions indicated are to the face of a material, unless noted otherwise.

NOT FOR
CONSTRUCTION
DO NOT COPY/
DISTRIBUTE

Architect:
License Number: #
Drawn By: #
Project Number: #

COVER SHEET/DRAWING
INDEX

G000



PLAN KEYNOTES

- 1 FIRE EXTINGUISHER CABINET, RE: A507
- 2 PANELBOARD(S), RE: ELEC. DWGS
- 3 BUILDING SIGNAGE, RE: ELEC. DWGS
- 5 OUTDOOR PATIO, CONCRETE SLAB W/ SEALER
- 6 PATIO CANOPY AND STRUCTURE, RE: STRUCT DWGS, STEEL COLUMNS, PTD
- 7 DRIVE-THRU CANOPY, RE: STRUCT DWGS
- 8 CUSTARD MACHINE SHUT-OFF SWITCH, RE: MEP DWGS
- 9 CUSTARD MACHINE TO STRADDLE FLOOR SINKS
- 10 GROUND MOUNTED RTU, RE: MEP DWGS
- 11 EXTERIOR DUCTWORK, RE: MEP DWGS, RE: STRUCT. FOR WALL PENETRATIONS
- 15 WALK-IN COOLER/FREEZER, COORDINATE WITH SUPPLIER
- 16 PROVIDE HOT AND COLD WATER HOSE BIB ON WALL BEHIND AND ADJACENT TO CUSTARD MACHINES, RE: MEP DWGS
- 17 INSTALL STAINLESS STEEL CORNER GUARDS THROUGHOUT, TYP. ALL EXPOSED CORNERS RE: A507
- 18 CASED OPENING FOR WALK-IN ACCESS, MAINTAIN A MIN OF 10" CLEAR ON OPERABLE SIDE OF WALK-IN COOLER & FREEZER COORDINATE DETAIL W/ MFG.
- 19 ANDY'S FROZEN CUSTARD NEON CONE SIGN - LOCATED INSIDE STORE IN FRONT OF STOREFRONT GLAZING, SUSPENDED, CONSEAL POWER SUPPLY ALONG INSIDE FACE OF MULLION.
- 20 ANDY'S FROZEN CUSTARD "SPRECHER ROOT BEER" NEON SIGN - LOCATED INSIDE STORE IN FRONT OF STOREFRONT GLAZING, SUSPENDED, CONSEAL POWER SUPPLY ALONG INSIDE FACE OF MULLION.
- 21 AREA DRAIN, TIE INTO BELOW GRADE STORM DRAINAGE SYSTEM, SLOPE SLAB TO AREA DRAIN. RE: MEP & CIVIL DWGS
- 22 WALK-IN COOLER/FREEZER CONDENSING UNITS, RE: MEP DWGS
- 23 SIGNAGE LIGHTING BAND, BY PINNACLE SIGN GROUP. RE: ELEC DWGS & SIGNAGE DWGS
- 24 PRE-FINISHED DOWNSPOUT, TIE INTO BELOW GRADE STORM DRAINAGE SYSTEM. RE: MEP & CIVIL DWGS
- 25 WATER HEATER, RE: MEP DWGS
- 26 WATER SOFTENER, RE: MEP DWGS
- 27 4"x4" MAX THRU WALL DRAINAGE OPENING AT FIRST COURSE OF M-1 ABOVE GRADE, PROVIDE CLOSURE GRATE AT INTERIOR SIDE OF WALL
- 28 STAINLESS STEEL CLOSURE ANGLE
- 29 IPAD HOLDER

NOTE:
 1. CONTRACTOR TO VERIFY ALL DIMENSIONS AND LOCATIONS OF EXISTING STRUCTURE, MECHANICAL, ELECTRICAL, PLUMBING, ETC. AND NOTIFY ARCHITECT OF ANY DISCREPANCIES.
 2. DIMENSIONS ARE FROM GRIDLINES TO FINISH FACE OF WALL OR MASONRY, U.O.N.
 3. REFER TO A701 FOR ADDITIONAL NOTES PERTAINING TO WALL TYPE CONSTRUCTION AND DETAILING.
 4. REFER TO EQUIPMENT PLAN FOR ALL EQUIPMENT.
 5. REFER TO WALL SECTIONS FOR EXTERIOR WALL CONSTRUCTION.
 6. REFERENCE CIVIL SITE PLAN FOR BUILDING LOCATION AND ORIENTATION ON SITE.

PROJECT INFORMATION
ANDY'S FROZEN CUSTARD,
CANOPY PROTOTYPE

OWNER:
 ANDY'S FROZEN CUSTARD
 211 E. Water Street
 Springfield, MO 65806
 www.ataandys.com

ARCHITECT:
 HUFFT
 3612 Karnes Boulevard
 Kansas City, MO 64111
 P. 816.531.0200
 www.hufft.com

STRUCTURAL:
 METTEMAYER ENGINEERING, LLC
 2225 W. Chesterfield Blvd., Suite 300
 Springfield, MO 65807
 P. 417.990.8902

CIVIL:

MEP:
 RTM ENGINEERING CONSULTANTS
 3333 E. Battlefield Road, Suite 1000
 Springfield, MO 65804
 P. 417.881.0200

LANDSCAPE ARCHITECT:

ISSUE:
PROJECT STATUS
 04/20/2022

REVISION SCHEDULE:

NO.	DATE	ISSUE

THIS DRAWING WAS PREPARED under the Architect's supervision, and is an "Instrument of Service." Intended solely for use by our Client on this project. The Architect disclaims responsibility for the existing building structure, existing site conditions, existing construction elements, and drawings or documents not signed and sealed by the Architect. The information, ideas and designs indicated including the overall form, arrangement and composition of spaces or building elements - constitutes the original, confidential, and unpublished Work and property of the Architect. Receipt or possession of this Drawing confers no right in, or income, subsistence to others, the subject matter contained herein for any but authorized purposes. Unauthorized reproduction, distribution or dissemination in whole or in part - is strictly prohibited. All rights reserved © 2022 by Hufft Projects LLC.

THIS DRAWING MAY BE PART of an integrated set of Construction Documents, including the Contract, the Conditions and the Specifications. The Contract Documents are complementary. What is required by one is as binding as if required by all. Application of a material or equipment item to Work installed by others constitutes acceptance of that Work. Calculate and measure dimensions. - DO NOT SCALE DRAWINGS unless directed by the Architect to do so. Dimensions indicated are to the face of a material, unless noted otherwise.

NOT FOR CONSTRUCTION
DO NOT COPY/DISTRIBUTE

1 FLOOR PLAN
 1/4" = 1'-0"

Architect:
 License Number: #
 Drawn By: MS
 Project Number: #

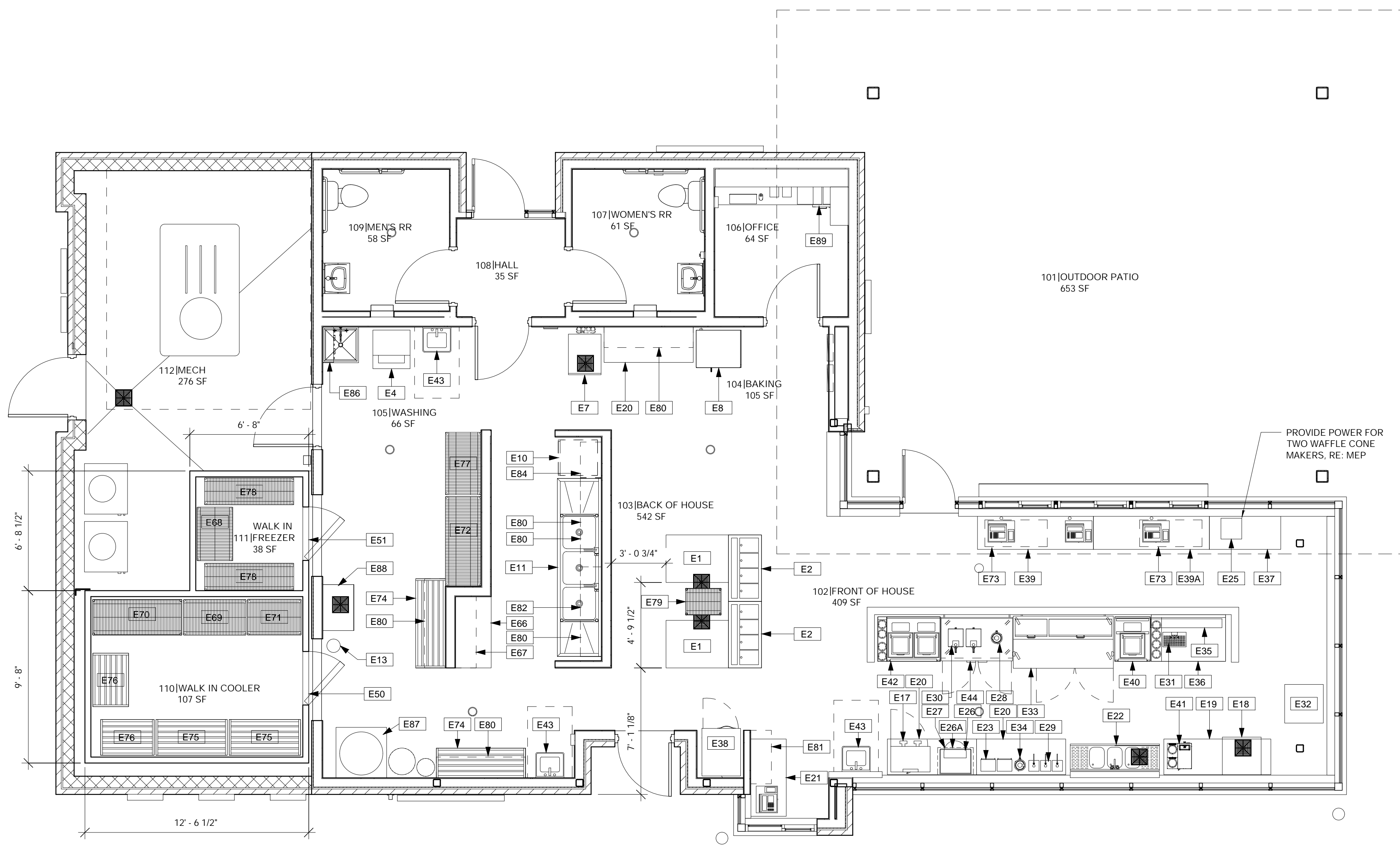
FLOOR PLAN

A101

FOOD SERVICE EQUIPMENT SCHEDULE:

ITEM #	QTY.	EQUIPMENT CATEGORY	NOTES	MANUFACTURER	MODEL #	PROVIDED BY
E1	2	CUSTARD MACHINE		SECO	DBCM	SECO
E2	2	ICE CREAM DIPPING CABINET		STOELTING	DC4T-37R-A	KITCHEN EQUIPMENT SUPPLIER
E4	1	WASHER/DRYER		UNIMAC	UTEESASP	KITCHEN EQUIPMENT SUPPLIER
E7	1	ICE MAKER W/ BIN	AIRCOOLED	HOSHIZAKI	KM-231B-AJ	KITCHEN EQUIPMENT SUPPLIER
E7.1	1	FILTER SYSTEM, COMBINATION APPLICATIONS	PROVIDE AT ICE MACHINE	3M	DP190/DP195	KITCHEN EQUIPMENT SUPPLIER
E8	1	OVEN, CONVECTION, ELECTRIC	W/ STAND, CASTER	BLODGETT	CTB SINGLE	KITCHEN EQUIPMENT SUPPLIER
E10	1	WAREWASHER, UNDERCOUNTER, HIGH TEMP		HOBART	LXH	KITCHEN EQUIPMENT SUPPLIER
E11	1	SINK, SCULLERY, 3 COMPARTMENTS		EAGLE GROUP	314-22-3-24	KITCHEN EQUIPMENT SUPPLIER
E13	4	CO2 TANK				OWNER
E17	1	MILK DISPENSER		SILVER KING	SKMAJ2	KITCHEN EQUIPMENT SUPPLIER
E18	1	ICE CADDY		CAMBRO	1CS100L4S	KITCHEN EQUIPMENT SUPPLIER
E19	1	TABLE, WORK; 24 X 72	W/ CASTERS - COFFEE TABLE	EAGLE GROUP	CUSTOM	KITCHEN EQUIPMENT SUPPLIER
E20	3	TABLE, WORK; 24 X 60	W/ CASTERS ON BACK LINE	EAGLE GROUP	T2460SEB-BS	KITCHEN EQUIPMENT SUPPLIER
E21	1	TABLE, WORK; 24 X 52	W/ CASTERS ON BACK LINE	EAGLE GROUP	T2460SEB-BS	KITCHEN EQUIPMENT SUPPLIER
E22	1	COLLAR SINK		KMI	CUSTOM	KITCHEN EQUIPMENT SUPPLIER
E23	2	BLENDER		ASTRO BLENDER		KITCHEN EQUIPMENT SUPPLIER
E25	1	WAFFLE CONE MAKER	PROVIDE POWER FOR 2 WAFFLE CONE MAKERS	COBATCO	MD-10SSE-L	COBATCO
E26	1	MICROWAVE OVEN	PROGRAM PER ANDY'S FROZEN CUSTARD SPECIFICATION	PANASONIC	NE-1064	KITCHEN EQUIPMENT SUPPLIER
E26A	1	MICROWAVE SHELF; 18 X 24		METRO	1824NC	KITCHEN EQUIPMENT SUPPLIER
E27	1	DRINK MIXER	STERLING MULTIMIXER	IMH PRODUCTS	9B3CH	IMH PRODUCTS
E28	1	WARMER, FUDGE & SYRUP		SERVER PRODUCTS	82500	KITCHEN EQUIPMENT SUPPLIER
E29	3	LID W/ PUMP (FITS #10 CAN)		SERVER PRODUCTS	CP-10 83000	KITCHEN EQUIPMENT SUPPLIER
E30	2	WARMER, FUDGE & SYRUP		SERVER PRODUCTS	85070	KITCHEN EQUIPMENT SUPPLIER
E31	1	KEGERATOR	WATER SUPPLY AND CO2 TO CENTER TAP	BEVERAGE-AIR	DD48HC-1-S	KITCHEN EQUIPMENT SUPPLIER
E32	1	BOTTLE COOLER	W/CASTERS	BEVERAGE-AIR	BB24HC-1-G-S	KITCHEN EQUIPMENT SUPPLIER
E33	1	REFRIGERATOR, WORKTOP W/RAIL		TRUE	TPP-67	KITCHEN EQUIPMENT SUPPLIER
E34	1	WARMER, FUDGE & SYRUP		SERVER PRODUCTS	82060	KITCHEN EQUIPMENT SUPPLIER
E35	1	6"X48" SS SHELF				KITCHEN EQUIPMENT SUPPLIER
E36	1	BEVERAGE COUNTER	INCLUDES CUP DISPENSER		CUSTOM	KITCHEN EQUIPMENT SUPPLIER
E37	1	TABLE, WORK; 24 X 48	WAFFLE CONE MAKER TABLE W/ BACKSPLASH, CASTERS, UNDERSHELF	EAGLE GROUP		KITCHEN EQUIPMENT SUPPLIER
E38	1	FREEZER, REACH-IN		BEVERAGE-AIR	HF1-1HS	KITCHEN EQUIPMENT SUPPLIER
E39	1	TABLE, WORK; 24 X 78	OPEN BASE - FRONT POS. PROVIDE 2 GROMMET HOLES	EAGLE GROUP	CUSTOM	KITCHEN EQUIPMENT SUPPLIER
E39A	1	TABLE, WORK; 24 X 78	OPEN BASE - FRONT POS. PROVIDE 1 GROMMET HOLE	EAGLE GROUP	CUSTOM	KITCHEN EQUIPMENT SUPPLIER
E40	1	DROP-IN, FREEZER / ICE CREAM		PERLICK	8000B	KITCHEN EQUIPMENT SUPPLIER
E41	1	COFFEE MAKER, POUROVER		BUNN	13300.0002	KITCHEN EQUIPMENT SUPPLIER
E42	1	DROP-IN, FREEZER / ICE CREAM	DOUBLE DIP W/ CUP DISPENSER	PERLICK	8000B	KITCHEN EQUIPMENT SUPPLIER
E43	3	HAND SINK	PROVIDE ADA UNDERSINK PIPE PROTECTION WRAP	EAGLE	HSA-10-F	KITCHEN EQUIPMENT SUPPLIER
E44	1	WORKTOP FREEZER		Beverage Air	WTR48A	KITCHEN EQUIPMENT SUPPLIER
E50	1	WALK-IN COOLER	SPECIFIC TO EACH LOCATION		CUSTOM	KITCHEN EQUIPMENT SUPPLIER
E51	1	WALK-IN FREEZER	SPECIFIC TO EACH LOCATION		CUSTOM	KITCHEN EQUIPMENT SUPPLIER
E66	1	TABLE, WORK; 24 X 48	TABLE	EAGLE GROUP	ST6R5-2448SSK	KITCHEN EQUIPMENT SUPPLIER
E67	1	SHELVING, WIRE; 14 X 48	GREEN; WALL SHELF, RAIL TOP	METRO		KITCHEN EQUIPMENT SUPPLIER
E68	1	SHELVING, WIRE; 24 X 36	GREEN EPOXY COATED, W/ S-CLIPS. CLIP TO E78	METRO	2436NK3	KITCHEN EQUIPMENT SUPPLIER
E69	1	SHELVING, WIRE; 24 X 42; 72" POSTS	GREEN EPOXY COATED, W/ CASTERS	METRO		KITCHEN EQUIPMENT SUPPLIER
E70	1	SHELVING, WIRE; 24 X 60; 72" POSTS	GREEN EPOXY COATED, W/ CASTERS	METRO	2460NK3	KITCHEN EQUIPMENT SUPPLIER
E71	1	SHELVING, WIRE; 24 X 36; 72" POSTS	GREEN EPOXY COATED, W/ CASTERS	METRO	2436NK3	KITCHEN EQUIPMENT SUPPLIER
E72	1	SHELVING, WIRE; 18 X 24	W/ CASTERS	METRO	2460NC	KITCHEN EQUIPMENT SUPPLIER
E73	2	SHELVING, WIRE; 18 X 42	2 TIER - POS	METRO	1824NC	KITCHEN EQUIPMENT SUPPLIER
E74	2	RACK, DUNNAGE; 20 X 60		EAGLE GROUP	CUSTOM	KITCHEN EQUIPMENT SUPPLIER
E75	2	RACK, DUNNAGE; 28 X 48	WALK-IN COOLER - CUSTOM, SOLID TOP	EAGLE GROUP	CUSTOM	KITCHEN EQUIPMENT SUPPLIER
E76	2	RACK, DUNNAGE; 24 X 36	WALK-IN COOLER - CUSTOM, SOLID TOP	EAGLE GROUP	CUSTOM	KITCHEN EQUIPMENT SUPPLIER
E77	1	SHELVING, WIRE; 24 X 42	W/ CASTERS	METRO	2442NC	KITCHEN EQUIPMENT SUPPLIER
E78	2	SHELVING, WIRE; 18 X 60	GREEN EPOXY COATED	METRO	1860NK3	KITCHEN EQUIPMENT SUPPLIER
E79	1	SHELVING, WIRE; 18 X 24	W/ CASTERS & SOLID TOP SHELF - CUSTARD MACHINE	METRO	1824NC	KITCHEN EQUIPMENT SUPPLIER
E80	6	SHELVING, WIRE; 14 X 60	GREEN; WALL SHELF, RAIL TOP	METRO	1460NK3	KITCHEN EQUIPMENT SUPPLIER
E81	1	SHELVING, WIRE; 14 X 36	WALL SHELF	METRO		KITCHEN EQUIPMENT SUPPLIER
E82	1	SHELVING, WIRE; 14 X 36	GREEN; WALL SHELF	METRO	1436NK3	KITCHEN EQUIPMENT SUPPLIER
E84	2	SHELVING, WIRE; 14 X 24	GREEN; WALL SHELF	METRO		KITCHEN EQUIPMENT SUPPLIER
E86	1	UTILITY SHELF	WITH MOP HANGER	EAGLE GROUP	USO814-16/3	KITCHEN EQUIPMENT SUPPLIER
E87	1	STAINLESS STEEL STAND; 34 X 34	UNDER WATER HEATER	EAGLE GROUP	CUSTOM	KITCHEN EQUIPMENT SUPPLIER
E88	1	WATER PRESSURE WASHER	WALL MOUNTED PER MANUFACTURER'S DETAIL AND MOUNTING ACCESSORIES. 3/4" SCHEDULE 80 GALVANIZED PIPING, RE: MEP	HOTSY	7143	KITCHEN EQUIPMENT SUPPLIER
E89	1	SAFE	UNDER OFFICE DESK	CSS	B3121DM-SR2-S G4440	KITCHEN EQUIPMENT SUPPLIER

NOTES:
 1) PROVIDE BOBRICK B-211 SOAP DISPENSER AND BOBRICK B-262 PAPER TOWEL DISPENSER (WALL MOUNT) AT EACH HAND SINK
 2) REFERENCE KITCHEN DWGS FOR ADDITIONAL CLARIFICATIONS



1 EQUIPMENT AND FURNISHINGS PLAN
 1/4" = 1'-0"

PROJECT INFORMATION:
ANDY'S FROZEN CUSTARD, CANOPY PROTOTYPE
 OWNER:
 ANDY'S FROZEN CUSTARD
 211 E. Water Street
 Springfield, MO 65806
 www.andy.com
 ARCHITECT:
 HUFFT
 3612 Kernes Boulevard
 Kansas City, MO 64111
 P. 816.531.0200
 www.hufft.com
 STRUCTURAL:
 METTEMEYER ENGINEERING, LLC
 2225 W. Chesterfield Blvd., Suite 300
 Springfield, MO 65807
 P. 417.990.0002

CIVIL:
 MEP:
 RTM ENGINEERING CONSULTANTS
 3333 E. Battlefield Road, Suite 1000
 Springfield, MO 65804
 P. 417.881.0200

LANDSCAPE ARCHITECT:

ISSUE:
PROJECT STATUS
 04/20/2022

REVISION SCHEDULE:
 NO. DATE ISSUE

THIS DRAWING WAS PREPARED under the Architect's supervision, and is an "Instrument of Service." Intended solely for use by our Client on this project. The Architect disclaims responsibility for the existing building structure, existing site conditions, existing construction elements, and drawings or documents not signed and sealed by the Architect. The information, ideas and designs indicated including the overall form, arrangement and composition of spaces or building elements - constitutes the original, confidential, and unpublished Work and property of the Architect. Receipt or possession of this Drawing confers no right in, or license to disclose to others the subject matter contained herein for any but authorized purposes. Unauthorized reproduction, distribution or dissemination in whole or in part - is strictly prohibited. All rights reserved © 2022 by Hufft Projects LLC.

THIS DRAWING MAY BE PART of an integrated set of Construction Documents, including the Contract, the Conditions and the Specifications. The Contract Documents are complementary. What is required by one is as binding as if required by all. Application of a material or equipment item to Work installed by others constitutes acceptance of that Work. Calculate and measure dimensions - DO NOT SCALE DRAWINGS unless directed by the Architect to do so. Dimensions indicated are to the face of a material, unless noted otherwise.

NOT FOR CONSTRUCTION
 DO NOT COPY/
 DISTRIBUTE

Architect:
 License Number: #
 Drawn By: MS
 Project Number: #
EQUIPMENT & FURNISHINGS PLAN

A102

PROJECT INFORMATION:
**ANDY'S FROZEN CUSTARD,
 CANOPY PROTOTYPE**

OWNER:
ANDY'S FROZEN CUSTARD
 211 E. Water Street
 Springfield, MO 65806
 www.ostandys.com

ARCHITECT:
HUFFT
 3612 Kernes Boulevard
 Kansas City, MO 64111
 P: 816.531.0200
 www.hufft.com

STRUCTURAL:
METTEMAYER ENGINEERING, LLC
 2225 W. Chesterfield Blvd., Suite 300
 Springfield, MO 65807
 P: 417.890.8902

CIVIL:

MEP:
RTM ENGINEERING CONSULTANTS
 3333 E. Battlefield Road, Suite 1000
 Springfield, MO 65804
 P: 417.881.0200

LANDSCAPE ARCHITECT:

ISSUE:
PROJECT STATUS
 04/20/2022

REVISION SCHEDULE:

NO.	DATE	ISSUE

THIS DRAWING WAS PREPARED under the Architect's supervision, and is an "Instrument of Service." Intended solely for use by our Client on this project. The Architect disclaims responsibility for the existing building structure, existing site conditions, existing construction elements, and drawings or documents not signed and sealed by the Architect. The information, ideas and designs indicated including the overall form, arrangement and composition of spaces or building elements - constitutes the original, confidential, and unpublished Work and property of the Architect. Receipt or possession of this Drawing confers no right in, or income to disclose to others the subject matter contained herein for any but authorized purposes. Unauthorized reproduction, distribution or dissemination in whole or in part - is strictly prohibited. All rights reserved © 2022 by Hufft Projects LLC.

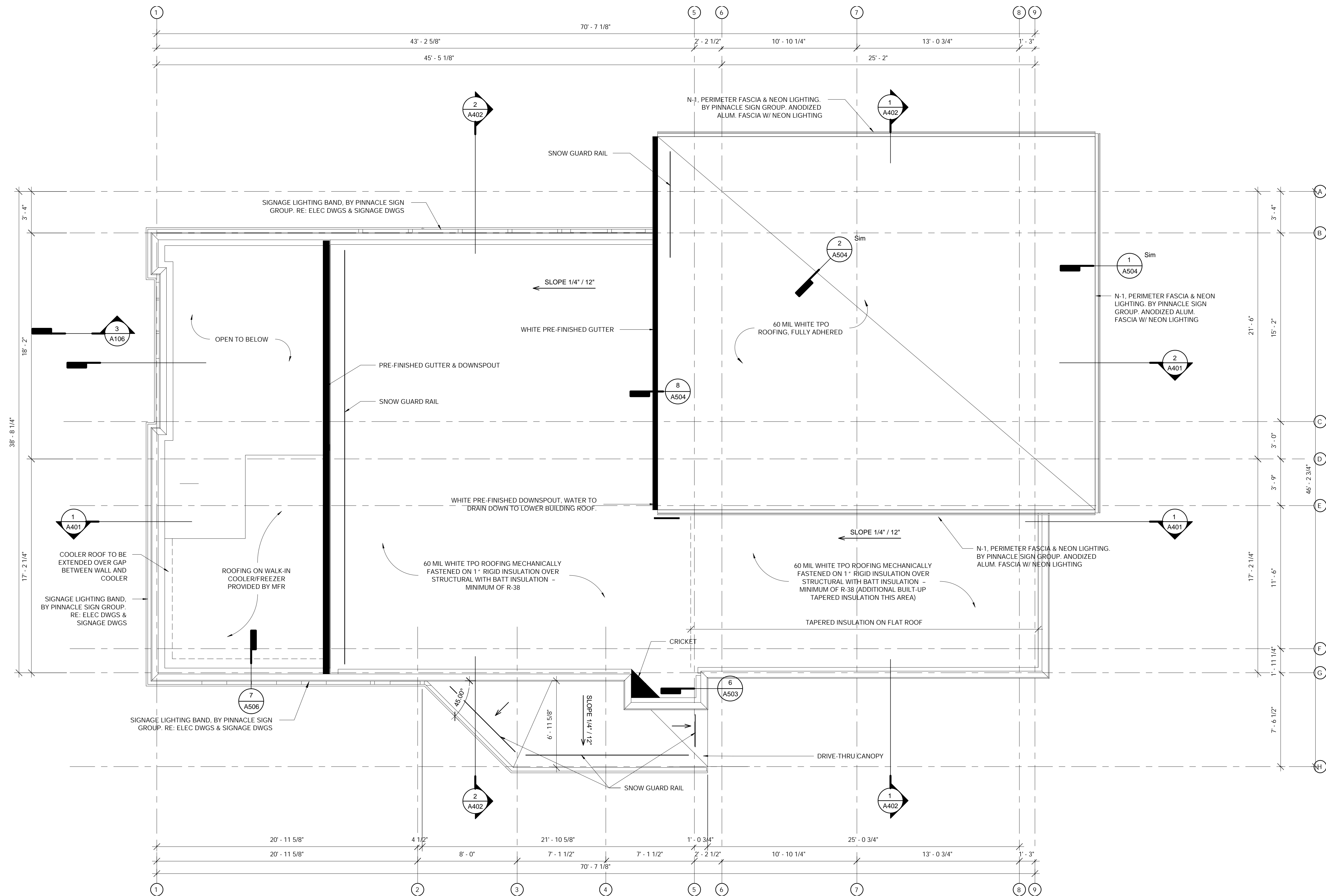
THIS DRAWING MAY BE PART of an integrated set of Construction Documents, including the Contract, the Conditions and the Specifications. The Contract Documents are complementary. What is required by one is as binding as if required by all. Application of a material or equipment item to Work installed by others constitutes acceptance of that Work. Calculate and measure dimensions - DO NOT SCALE DRAWINGS unless directed by the Architect to do so. Dimensions indicated are to the face of a material, unless noted otherwise.

**NOT FOR
 CONSTRUCTION
 DO NOT COPY/
 DISTRIBUTE**

Architect:
 License Number: #
 Drawn By: MS
 Project Number: #

ROOF PLAN

A104



1 ROOF PLAN
 1/4" = 1'-0"

PROJECT INFORMATION:
ANDY'S FROZEN CUSTARD,
CANOPY PROTOTYPE

OWNER:
ANDY'S FROZEN CUSTARD
 211 E. Water Street
 Springfield, MO 65806
 www.ostandys.com

ARCHITECT:
HUFFT
 3612 Kernes Boulevard
 Kansas City, MO 64111
 P: 816-531-0200
 www.hufft.com

STRUCTURAL:
METTEMAYER ENGINEERING, LLC
 2225 W. Chesterfield Blvd., Suite 300
 Springfield, MO 65807
 P: 417-990-8902

CIVIL:

MEP:
RTM ENGINEERING CONSULTANTS
 3333 E. Battlefield Road, Suite 1000
 Springfield, MO 65804
 P: 417-881-0200

LANDSCAPE ARCHITECT:

ISSUE:
PROJECT STATUS
 04/20/2022

REVISION SCHEDULE:

NO.	DATE	ISSUE

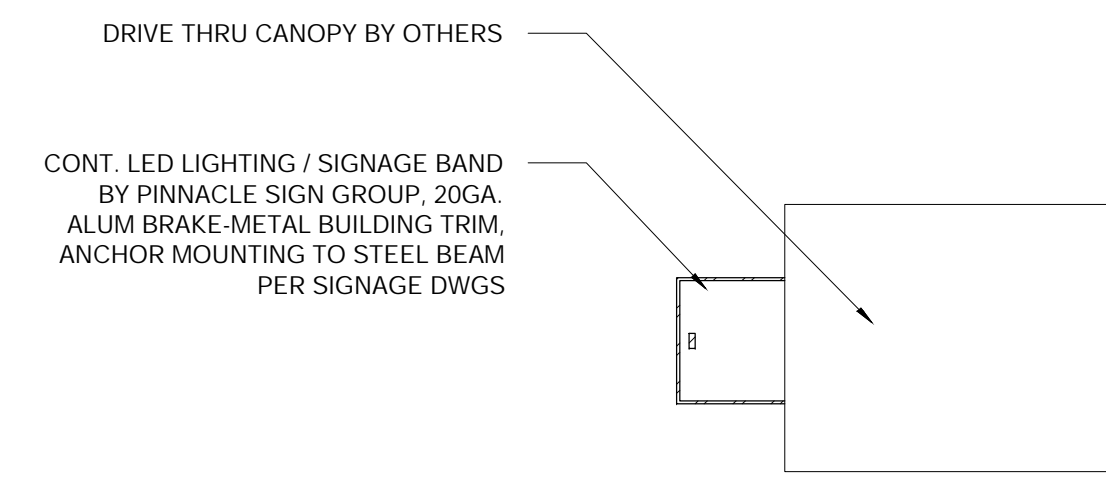
THIS DRAWING WAS PREPARED under the Architect's supervision, and is an "Instrument of Service." Intended solely for use by our Client on this project. The Architect disclaims responsibility for the existing building structure, existing site conditions, existing construction elements, and drawings or documents not signed and sealed by the Architect. The information, ideas and designs indicated including the overall form, arrangement and composition of spaces or building elements - constitutes the original, confidential, and unpublished Work and property of the Architect. Receipt or possession of this Drawing confers no right in, or income, or license to others the subject matter contained herein for any but authorized purposes. Unauthorized reproduction, distribution or dissemination in whole or in part - is strictly prohibited. All rights reserved © 2022 by Hufft Projects LLC.

THIS DRAWING MAY BE PART of an integrated set of Construction Documents, including the Contract, the Conditions and the Specifications. The Contract Documents are complementary. What is required by one is as binding as if required by all. Application of a material or equipment item to Work installed by others constitutes acceptance of that Work. Calculate and measure dimensions - DO NOT SCALE DRAWINGS unless directed by the Architect to do so. Dimensions indicated are to the face of a material, unless noted otherwise.

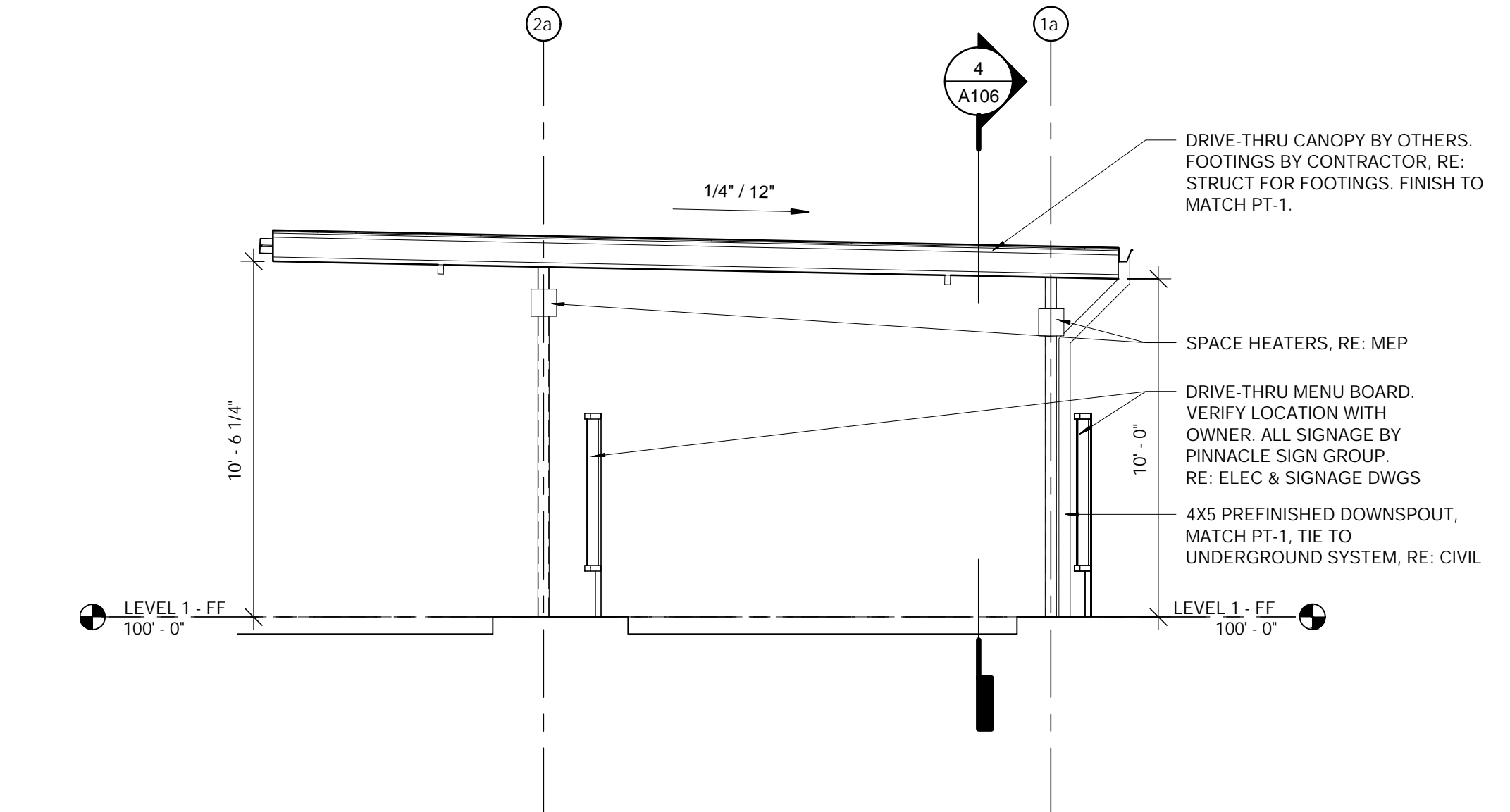
Architect:
 License Number: #
 Drawn By: Author
 Project Number: #

DRIVE THRU CANOPY

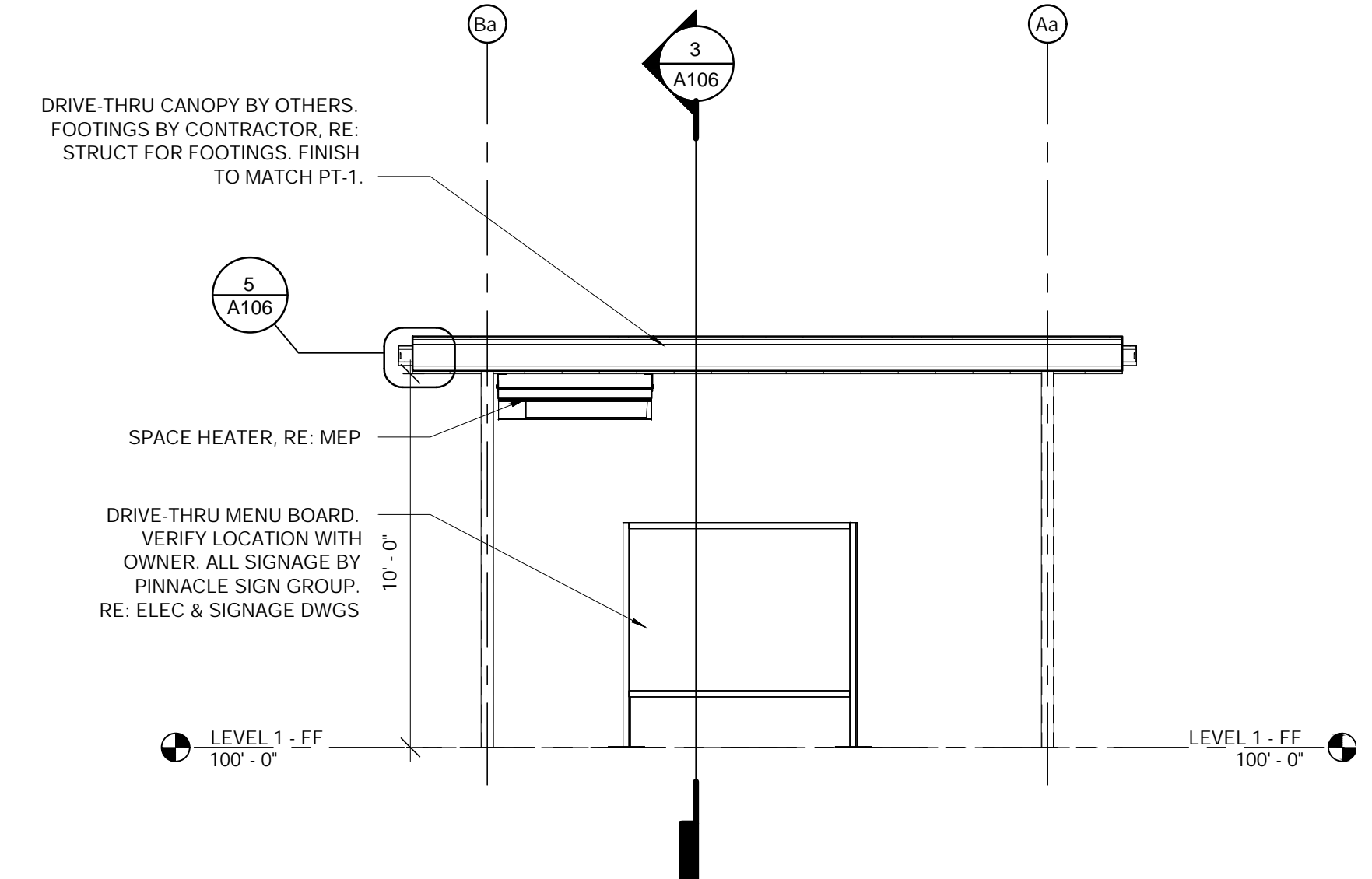
A106



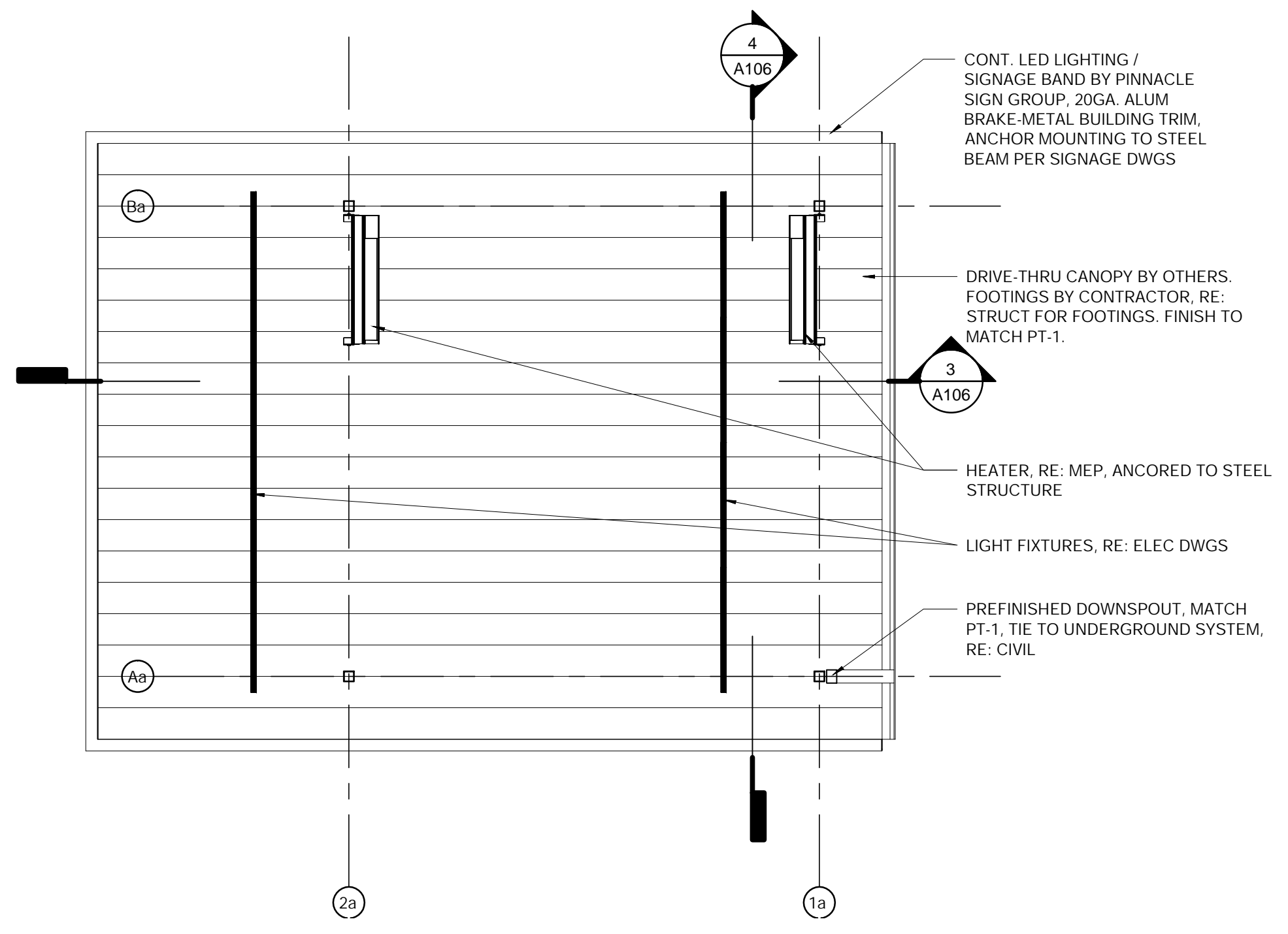
5 **DETAIL - DRIVE THRU CANOPY**
 1 1/2" = 1'-0"



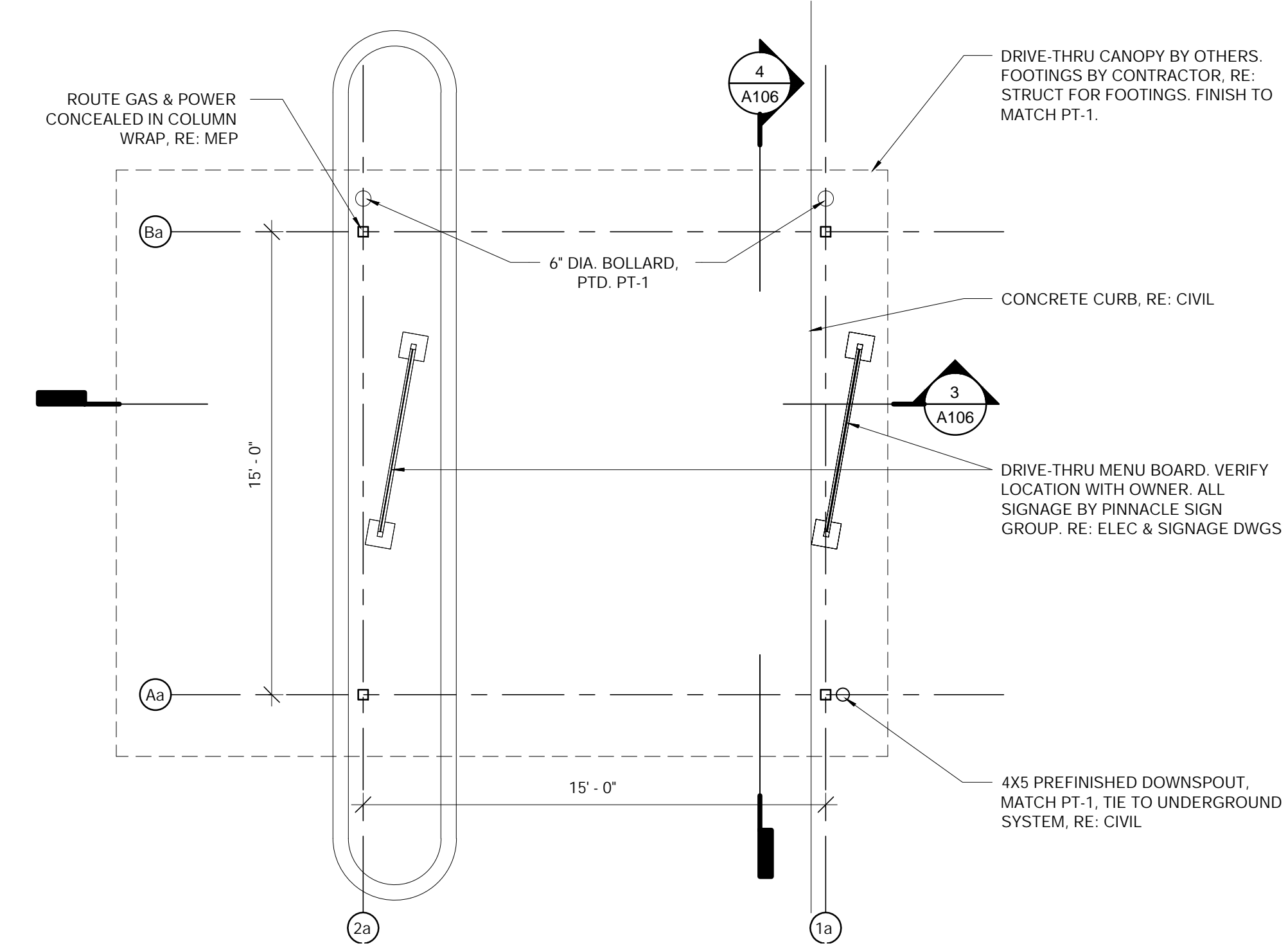
3 **SECTION 2 - DRIVE THRU CANOPY**
 1/4" = 1'-0"



4 **SECTION 1 - DRIVE THRU CANOPY**
 1/4" = 1'-0"

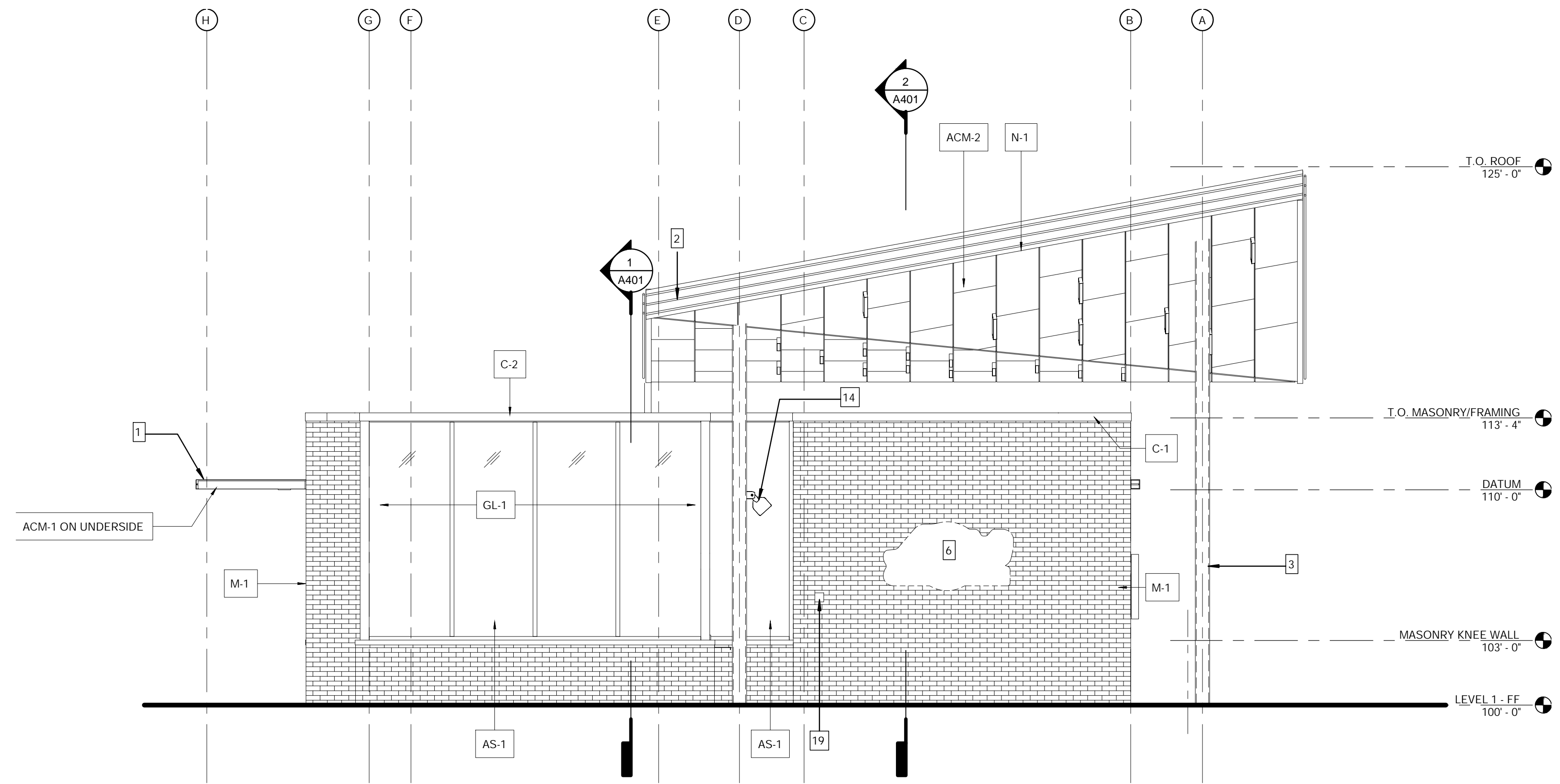


2 **REFLECTED CEILING PLAN - DRIVE THRU CANOPY**
 1/4" = 1'-0"

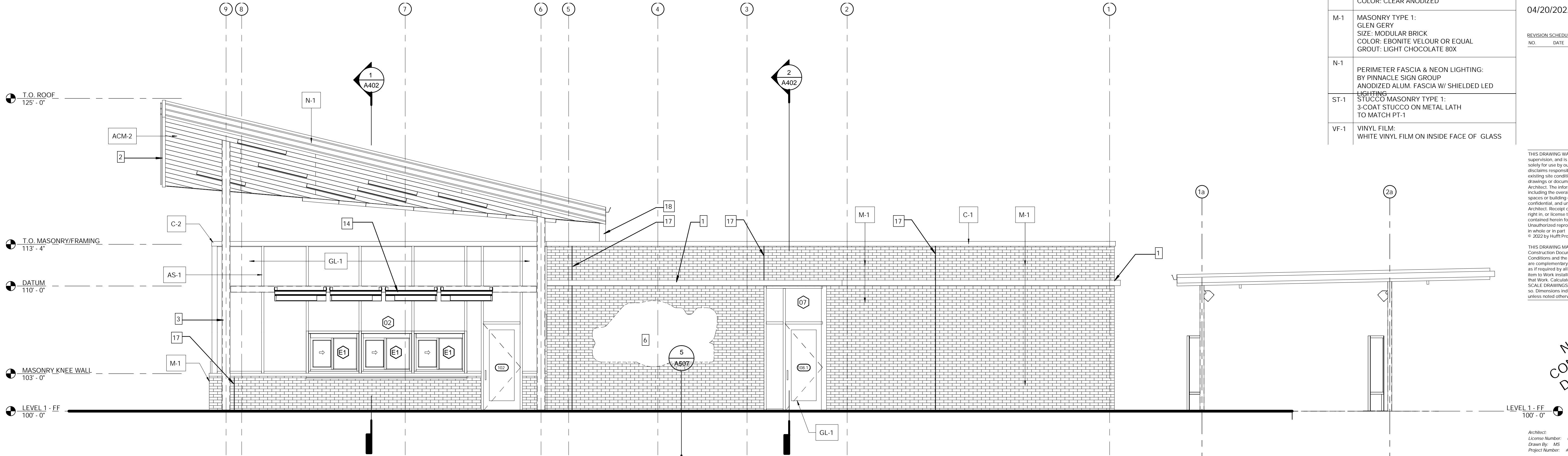


1 **FLOOR PLAN - DRIVE THRU CANOPY**
 1/4" = 1'-0"

NOT FOR CONSTRUCTION
DO NOT COPY/DISTRIBUTE



2 ELEVATION - 02
1/4" = 1'-0"



1 ELEVATION - 01
1/4" = 1'-0"

ELEVATION KEYNOTES

- 1 DRIVE-THRU CANOPY & SIGNAGE LIGHTING BAND. SIGNAGE LIGHTING BAND PROVIDED BY PINNACLE SIGN GROUP
- 2 PATIO CANOPY AND STRUCTURE. RE: STRUCT DWGS
- 3 EXPOSED STRUCTURAL FRAMING TO BE PAINTED. PTD PT-1
- 5 HM DOOR PTD. TO MATCH MASONRY WALL
- 6 BUILDING SIGNAGE. RE: ELEC. DWGS & SIGNAGE DWGS. ALL SIGNAGE PROVIDED BY PINNACLE SIGN GROUP
- 7 FULLY AUTOMATIC DRIVE-THRU WINDOW. RE: ELEC DWGS
- 8 ELECTRICAL EQUIP., PAINTED TO MATCH M-1 (RE: MANUF. SPECIFICATIONS), RE: MEP DWGS
- 11 EMERGENCY LIGHT FIXTURE
- 12 DOOR CHIME
- 13 WALL HYDRANT, RE: PLUMB. DWGS
- 14 EXTERIOR HEATER MOUNTED TO STEEL FRAME. RE: MEP
- 15 60 MIL WHITE TPO ROOFING, FULLY ADHERED
- 16 KEYNOTE NOT USED
- 17 MASONRY CONTROL JOINT
- 18 PRE-FINISHED GUTTER & DOWNSPOUT. DRAIN DOWN TO LOWER BUILDING ROOF. COORDINATE FASCIA W/ PINNACLE SIGN GROUP
- 19 KNOX KEY BOX. COORDINATE LOCATION WITH LOCAL JURISDICTION

EXTERIOR FINISH SCHEDULE

#	DESCRIPTION
ACM-1	COMPOSITE PANEL TYPE 1; LAMINATORS, INC. OMEGA-LITE PANEL COLOR: PVDF/KYNAR 500, BRITE RED
ACM-2	COMPOSITE PANEL TYPE 2; LAMINATORS, INC. OMEGA-LITE PANEL COLOR: PVDF/KYNAR 500, BONE WHITE
AS-1	ALUMINUM STOREFRONT; KAWNEER 451T COLOR: CLEAR ANODIZED
C-1	COPING/ROOF EDGE TYPE 1; PRE-FINISHED ALUMINUM CAP AND SILL FLASHING AT STOREFRONT, TYP. COLOR: MATCH MASONRY COLOR
C-2	COPING/ROOF EDGE TYPE 2; ANODIZED ALUMINUM CAP AND SILL FLASHING AT STOREFRONT, TYP. COLOR: MATCH STOREFRONT FRAMING
GL-1	GLAZING TYPE 1; STOREFRONT, KAWNEER 451T COLOR: CLEAR ANODIZED
M-1	MASONRY TYPE 1; GLEN GERY SIZE: MODULAR BRICK COLOR: EBONITE VELOUR OR EQUAL GROUT: LIGHT CHOCOLATE 80X
N-1	PERIMETER FASCIA & NEON LIGHTING; BY PINNACLE SIGN GROUP ANODIZED ALUM. FASCIA W/ SHIELDED LED LIGHTING
ST-1	STUCCO MASONRY TYPE 1; 3-COAT STUCCO ON METAL LATH TO MATCH PT-1
VF-1	VINYL FILM; WHITE VINYL FILM ON INSIDE FACE OF GLASS

PROJECT INFORMATION
ANDY'S FROZEN CUSTARD, CANOPY PROTOTYPE

OWNER:
ANDY'S FROZEN CUSTARD
211 E. Water Street
Springfield, MO 65806
www.ostandys.com

ARCHITECT:
HUFT
3612 Kernes Boulevard
Kansas City, MO 64111
P: 816-531-0200
www.huft.com

STRUCTURAL:
METTEMAYER ENGINEERING, LLC
2225 W. Chesterfield Blvd., Suite 300
Springfield, MO 65807
P: 417-990-8902

CIVIL:

MEP:
RTM ENGINEERING CONSULTANTS
3333 E. Battlefield Road, Suite 1000
Springfield, MO 65804
P: 417-881-0200

LANDSCAPE ARCHITECT:

PROJECT STATUS
04/20/2022

REVISION SCHEDULE:

NO.	DATE	ISSUE

THIS DRAWING WAS PREPARED under the Architect's supervision, and is an "Instrument of Service." Intended solely for use by our Client on this project. The Architect disclaims responsibility for the existing building structure, existing site conditions, existing construction elements, and drawings or documents not signed and sealed by the Architect. The information, ideas and designs indicated including the overall form, arrangement and composition of spaces or building elements - constitutes the original, confidential, and unpublished Work and property of the Architect. Receipt or possession of this Drawing confers no right in, or income or disclosure to others the subject matter contained herein for any but authorized purposes. Unauthorized reproduction, distribution or dissemination in whole or in part - is strictly prohibited. All rights reserved © 2022 by Huft Projects LLC.

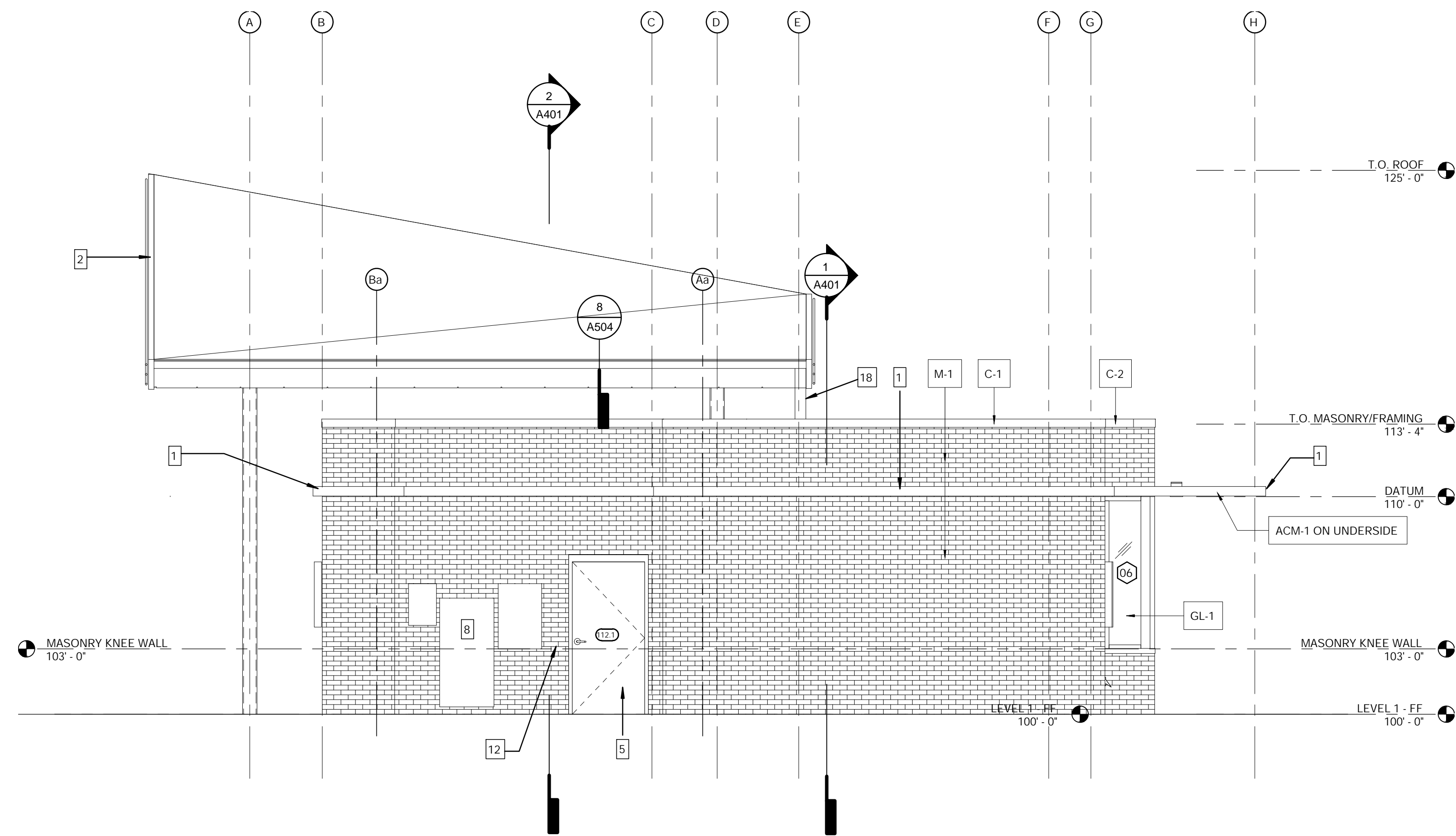
THIS DRAWING MAY BE PART of an integrated set of Construction Documents, including the Contract, the Conditions and the Specifications. The Contract Documents are complementary. What is required by one is as binding as if required by all. Application of a material or equipment item to Work installed by others constitutes acceptance of that Work. Calculate and measure dimensions - DO NOT SCALE DRAWINGS unless directed by the Architect to do so. Dimensions indicated are to the face of a material, unless noted otherwise.

NOT FOR CONSTRUCTION
DO NOT COPY/
DISTRIBUTE

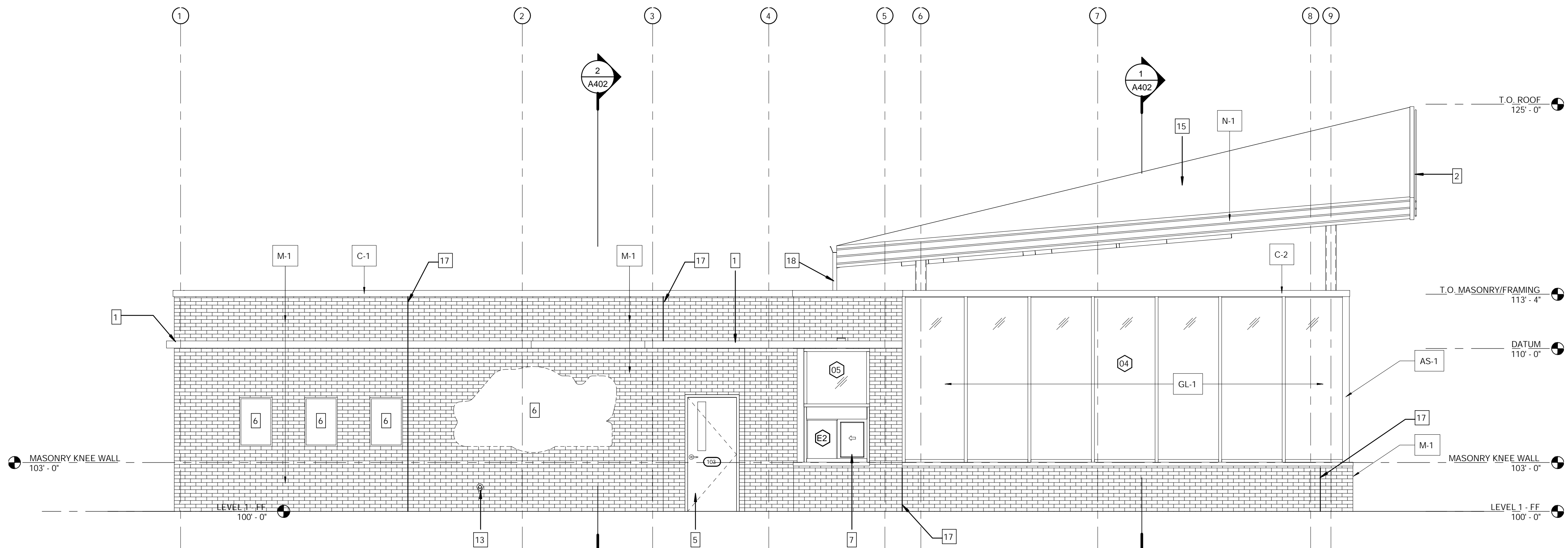
Architect:
License Number: #
Drawn By: MS
Project Number: #

ELEVATIONS

A301



2 ELEVATION - 04
1/4" = 1'-0"



1 ELEVATION - 03
1/4" = 1'-0"

ELEVATION KEYNOTES

- 1 DRIVE-THRU CANOPY & SIGNAGE LIGHTING BAND. SIGNAGE LIGHTING BAND PROVIDED BY PINNACLE SIGN GROUP
- 2 PATIO CANOPY AND STRUCTURE. RE: STRUCT DWGS
- 3 EXPOSED STRUCTURAL FRAMING TO BE PAINTED. PTD PT-1
- 5 HM DOOR PTD. TO MATCH MASONRY WALL
- 6 BUILDING SIGNAGE. RE: ELEC. DWGS & SIGNAGE DWGS. ALL SIGNAGE PROVIDED BY PINNACLE SIGN GROUP
- 7 FULLY AUTOMATIC DRIVE-THRU WINDOW. RE: ELEC DWGS
- 8 ELECTRICAL EQUIP., PAINTED TO MATCH M-1 (RE: MANUF. SPECIFICATIONS), RE: MEP DWGS
- 11 EMERGENCY LIGHT FIXTURE
- 12 DOOR CHIME
- 13 WALL HYDRANT. RE: PLUMB. DWGS
- 14 EXTERIOR HEATER MOUNTED TO STEEL FRAME. RE: MEP
- 15 60 MIL WHITE TPO ROOFING, FULLY ADHERED
- 16 KEYNOTE NOT USED
- 17 MASONRY CONTROL JOINT
- 18 PRE-FINISHED GUTTER & DOWNSPOUT. DRAIN DOWN TO LOWER BUILDING ROOF. COORDINATE FASCIA W/ PINNACLE SIGN GROUP
- 19 KNOX KEY BOX. COORDINATE LOCATION WITH LOCAL JURISDICTION

EXTERIOR FINISH SCHEDULE

#	DESCRIPTION
ACM-1	COMPOSITE PANEL TYPE 1: LAMINATORS, INC. OMEGA-LITE PANEL COLOR: PVDF/KYNAR 500, BRITE RED
ACM-2	COMPOSITE PANEL TYPE 2: LAMINATORS, INC. OMEGA-LITE PANEL COLOR: PVDF/KYNAR 500, BONE WHITE
AS-1	ALUMINUM STOREFRONT: KAWNEER 451T COLOR: CLEAR ANODIZED
C-1	COPING/ROOF EDGE TYPE 1: PRE-FINISHED ALUMINUM CAP AND SILL FLASHING AT MASONRY VENEER AND , TYP. COLOR: MATCH MASONRY COLOR
C-2	COPING/ROOF EDGE TYPE 2: ANNODIZED ALUMINUM CAP AND SILL FLASHING AT STOREFRONT, TYP. COLOR: MATCH STOREFRONT FRAMING
GL-1	GLAZING TYPE 1: STOREFRONT, KAWNEER 451T COLOR: CLEAR ANODIZED
M-1	MASONRY TYPE 1: GLEN GERY SIZE: MODULAR BRICK COLOR: EBONITE VELOUR OR EQUAL GROUT: LIGHT CHOCOLATE 80X
N-1	PERIMETER FASCIA & NEON LIGHTING: BY PINNACLE SIGN GROUP ANODIZED ALUM. FASCIA W/ SHIELDED LED LIGHTING
ST-1	STUCCO MASONRY TYPE 1: 3-COAT STUCCO ON METAL LATH TO MATCH PT-1
VF-1	VINYL FILM: WHITE VINYL FILM ON INSIDE FACE OF GLASS

PROJECT INFORMATION:
**ANDY'S FROZEN CUSTARD,
CANOPY PROTOTYPE**

OWNER:
ANDY'S FROZEN CUSTARD
211 E. Water Street
Springfield, MO 65806
www.atandys.com

ARCHITECT:
HUFFT
3612 Kernes Boulevard
Kansas City, MO 64111
P. 816.531.0200
www.hufft.com

STRUCTURAL:
METTEMAYER ENGINEERING, LLC
2225 W. Chesterfield Blvd., Suite 300
Springfield, MO 65807
P. 417.990.9100

CIVIL:

MEP:
RTM ENGINEERING CONSULTANTS
3333 E. Battlefield Road, Suite 1000
Springfield, MO 65804
P. 417.881.0200

LANDSCAPE ARCHITECT:

ISSUE:
PROJECT STATUS
04/20/2022

REVISION SCHEDULE:
NO. DATE ISSUE

THIS DRAWING WAS PREPARED under the Architect's supervision, and is an "Instrument of Service." Intended solely for use by our Client on this project. The Architect disclaims responsibility for the existing building structure, existing site conditions, existing construction elements, and drawings or documents not signed and sealed by the Architect. The information, ideas and designs indicated including the overall form, arrangement and composition of spaces or building elements - constitutes the original, confidential, and unpublished Work and property of the Architect. Receipt or possession of this Drawing confers no right in, or income, disclosure to others, the subject matter contained herein for any but authorized purposes. Unauthorized reproduction, distribution or dissemination in whole or in part - is strictly prohibited. All rights reserved © 2022 by Hufft Projects LLC.

THIS DRAWING MAY BE PART of an integrated set of Construction Documents, including the Contract, the Conditions and the Specifications. The Contract Documents are complementary. What is required by one is as binding as if required by all. Application of a material or equipment item to Work installed by others constitutes acceptance of that Work. Calculate and measure dimensions. - DO NOT SCALE DRAWINGS unless directed by the Architect to do so. Dimensions indicated are to the face of a material, unless noted otherwise.

**NOT FOR
CONSTRUCTION
DO NOT COPY/
DISTRIBUTE**

Architect:
License Number: #
Drawn By: MS
Project Number: #

ELEVATIONS

A302

ELEVATION KEYNOTES

- 1 DRIVE-THRU CANOPY & SIGNAGE LIGHTING BAND. SIGNAGE LIGHTING BAND PROVIDED BY PINNACLE SIGN GROUP
- 2 PATIO CANOPY AND STRUCTURE. RE: STRUCT DWGS
- 3 EXPOSED STRUCTURAL FRAMING TO BE PAINTED. PTD PT-1
- 5 HM DOOR PTD. TO MATCH MASONRY WALL
- 6 BUILDING SIGNAGE. RE: ELEC. DWGS & SIGNAGE DWGS. ALL SIGNAGE PROVIDED BY PINNACLE SIGN GROUP
- 7 FULLY AUTOMATIC DRIVE-THRU WINDOW. RE: ELEC DWGS
- 8 ELECTRICAL EQUIP., PAINTED TO MATCH M-1 (RE: MANUF. SPECIFICATIONS). RE: MEP DWGS
- 11 EMERGENCY LIGHT FIXTURE
- 12 DOOR CHIME
- 13 WALL HYDRANT. RE: PLUMB. DWGS
- 14 EXTERIOR HEATER MOUNTED TO STEEL FRAME. RE: MEP
- 15 60 MIL WHITE TPO ROOFING, FULLY ADHERED
- 16 KEYNOTE NOT USED
- 17 MASONRY CONTROL JOINT
- 18 PRE-FINISHED GUTTER & DOWNSPOUT. DRAIN DOWN TO LOWER BUILDING ROOF. COORDINATE FASCIA W/ PINNACLE SIGN GROUP
- 19 KNOX KEY BOX. COORDINATE LOCATION WITH LOCAL JURISDICTION

PROJECT INFORMATION:

**ANDY'S FROZEN CUSTARD,
CANOPY PROTOTYPE**

OWNER:

ANDY'S FROZEN CUSTARD
211 E. Water Street
Springfield, MO 65806
www.ataandys.com

ARCHITECT:

HUFFT
3612 Kernes Boulevard
Kansas City, MO 64111
P: 816-531-0200
www.hufft.com

STRUCTURAL:

METTEMAYER ENGINEERING, LLC
2225 W. Chesterfield Blvd., Suite 300
Springfield, MO 65807
P: 417-990-8902

CIVIL:

MEP:

RTM ENGINEERING CONSULTANTS
3333 E. Bathfield Road, Suite 1000
Springfield, MO 65804
P: 417-881-0200

LANDSCAPE ARCHITECT:

EXTERIOR FINISH SCHEDULE

#	DESCRIPTION
ACM-1	COMPOSITE PANEL TYPE 1: LAMINATORS, INC. OMEGA-LITE PANEL COLOR: PVDF/KYNAR 500, BRITE RED
ACM-2	COMPOSITE PANEL TYPE 2: LAMINATORS, INC. OMEGA-LITE PANEL COLOR: PVDF/KYNAR 500, BONE WHITE
AS-1	ALUMINUM STOREFRONT: KAWNEER 451T COLOR: CLEAR ANODIZED
C-1	COPING/ROOF EDGE TYPE 1: PRE-FINISHED ALUMINUM CAP AND SILL FLASHING AT MASONRY VENEER AND , TYP. COLOR: MATCH MASONRY COLOR
C-2	COPING/ROOF EDGE TYPE 2: ANNODIZED ALUMINUM CAP AND SILL FLASHING AT STOREFRONT, TYP. COLOR: MATCH STOREFRONT FRAMING
GL-1	GLAZING TYPE 1: STOREFRONT, KAWNEER 451T COLOR: CLEAR ANODIZED
M-1	MASONRY TYPE 1: GLEN GERY SIZE: MODULAR BRICK COLOR: EBONITE VELOUR OR EQUAL GROUT: LIGHT CHOCOLATE 80X
N-1	PERIMETER FASCIA & NEON LIGHTING: BY PINNACLE SIGN GROUP ANODIZED ALUM. FASCIA W/ SHIELDED LED LIGHTING
ST-1	STUCCO MASONRY TYPE 1: 3-COAT STUCCO ON METAL LATH TO MATCH PT-1
VF-1	VINYL FILM: WHITE VINYL FILM ON INSIDE FACE OF GLASS

ISSUE:
PROJECT STATUS
04/20/2022

REVISION SCHEDULE:
NO. DATE ISSUE

THIS DRAWING WAS PREPARED under the Architect's supervision, and is an "Instrument of Service." Intended solely for use by our Client on this project. The Architect disclaims responsibility for the existing building structure, existing site conditions, existing construction elements, and drawings or documents not signed and sealed by the Architect. The information, ideas and designs indicated including the overall form, arrangement and composition of spaces or building elements - constitutes the original, confidential, and unpublished Work and property of the Architect. Receipt or possession of this Drawing confers no right in, or income to, disclose to others the subject matter contained herein for any but authorized purposes. Unauthorized reproduction, distribution or dissemination in whole or in part - is strictly prohibited. All rights reserved © 2022 by Hufft Projects LLC.

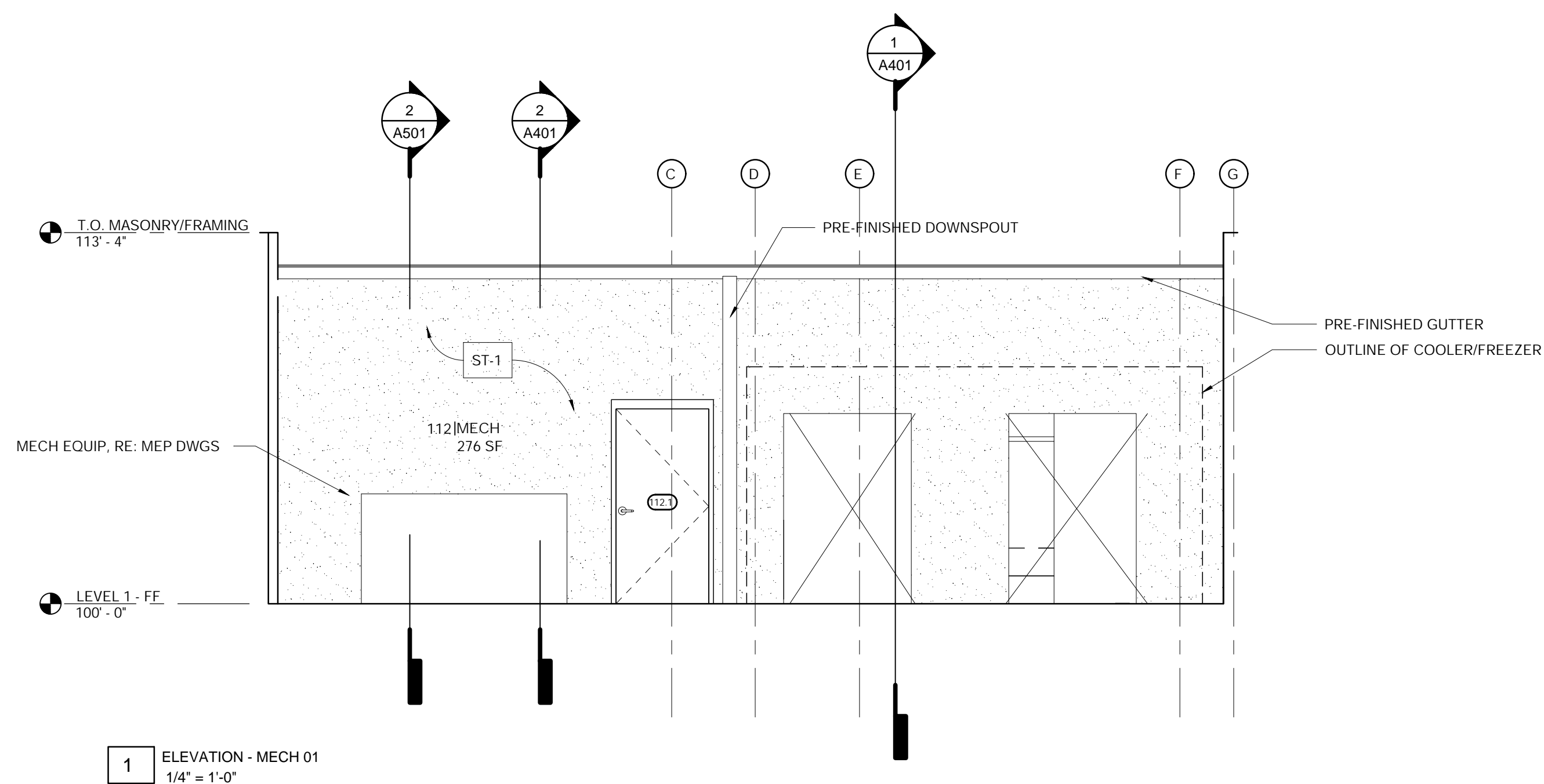
THIS DRAWING MAY BE PART of an integrated set of Construction Documents, including the Contract, the Conditions and the Specifications. The Contract Documents are complementary. What is required by one is as binding as if required by all. Application of a material or equipment item to Work installed by others constitutes acceptance of that Work. Calculate and measure dimensions. - DO NOT SCALE DRAWINGS unless directed by the Architect to do so. Dimensions indicated are to the face of a material, unless noted otherwise.

**NOT FOR
CONSTRUCTION
DO NOT COPY/
DISTRIBUTE**

Architect:
License Number: #
Drawn By: MS
Project Number: #

ELEVATIONS

A303



1 ELEVATION - MECH 01
1/4" = 1'-0"