



City of St. Charles, Illinois

Two East Main Street St. Charles, IL 60174-1984  
Phone: 630-377-4400 Fax: 630-377-4440 - www.stcharlesil.gov

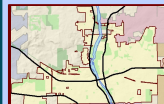
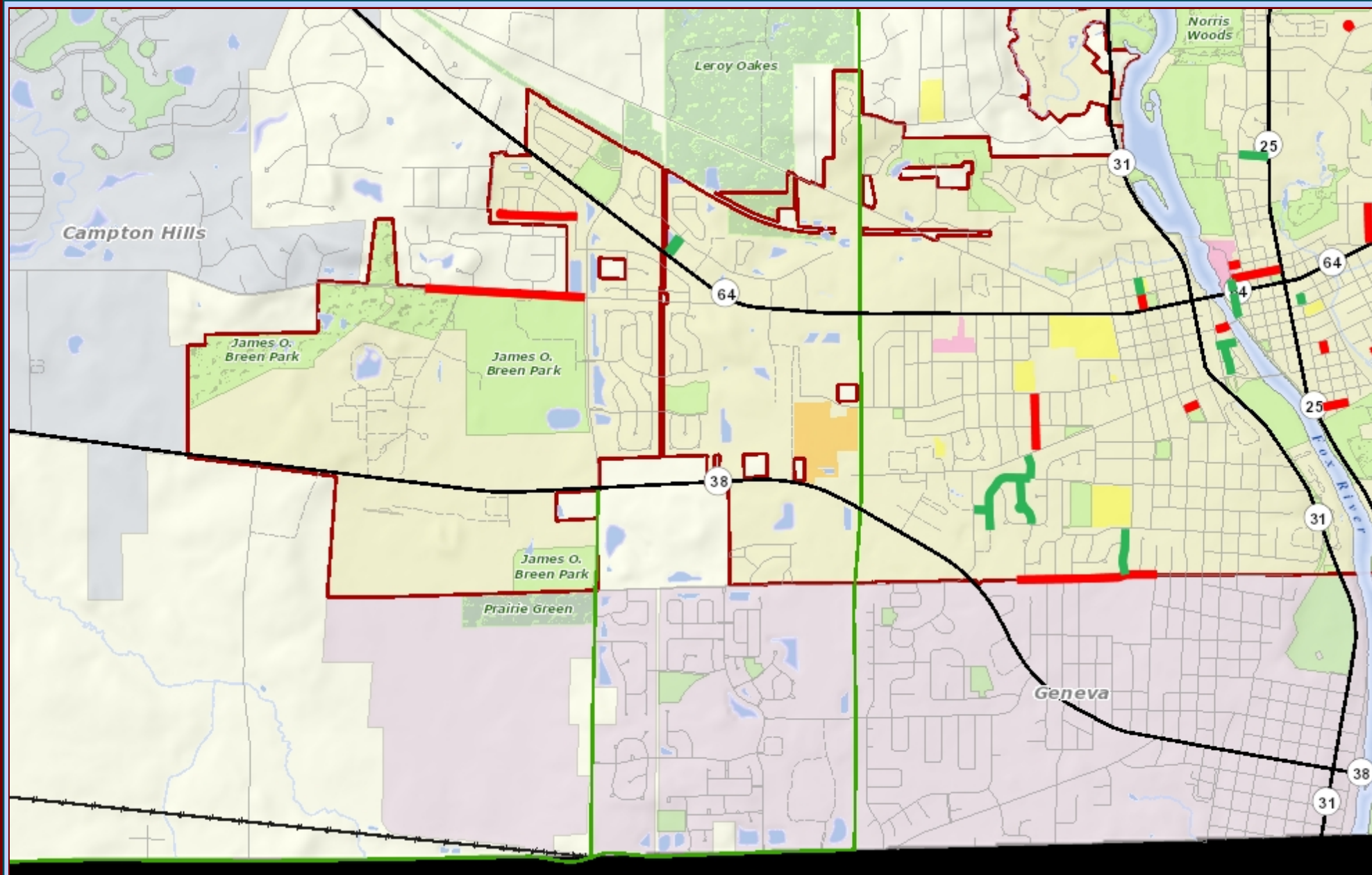
## 2020 Crackfill Streets - Southwest Section

RAYMOND ROGINA

Mayor

MARK KOENEN

City Administrator



Data Source:  
City of St. Charles, Illinois  
Kane County, Illinois  
DuPage County, Illinois  
Projection: Transverse Mercator  
Coordinate System: Illinois State Plane East  
North American Datum 1983  
Printed on: March 20, 2020 07:32 AM



0 1,333 2,667 Feet

Green - Fill cracks 1/8" and larger  
Red - Fill edge and centerline only  
Blue - Fill centerline only

This work was created for planning purposes only and is provided as is, without warranty of any kind, either expressed or implied. The information represented may contain proprietary and confidential property of the City of St. Charles, Illinois. Under United States Copyright protection laws you may not use, reproduce, or distribute any part of this document without prior written permission. To obtain written permission please contact the City of St. Charles at Two East Main Street, St. Charles, IL 60174.  
Revised for Inclusion GIS



City of St. Charles, Illinois

Two East Main Street St. Charles, IL 60174-1984  
Phone: 630-377-4400 Fax: 630-377-4440 - [www.stcharlesil.gov](http://www.stcharlesil.gov)

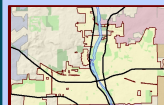
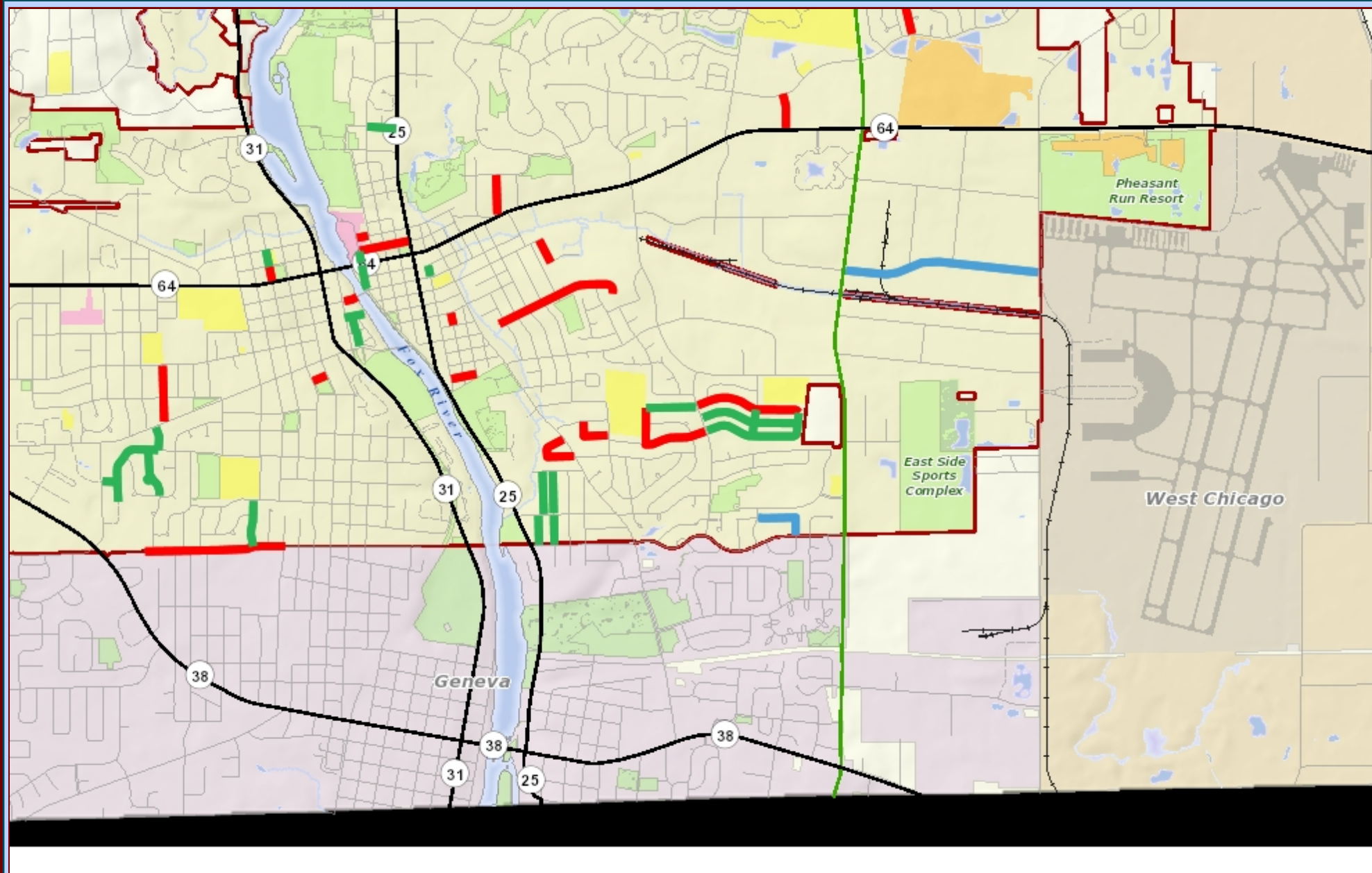
## 2020 Crackfill Streets - Southeast Section

RAYMOND ROGINA

Mayor

MARK KOENEN

City Administrator



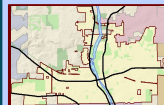
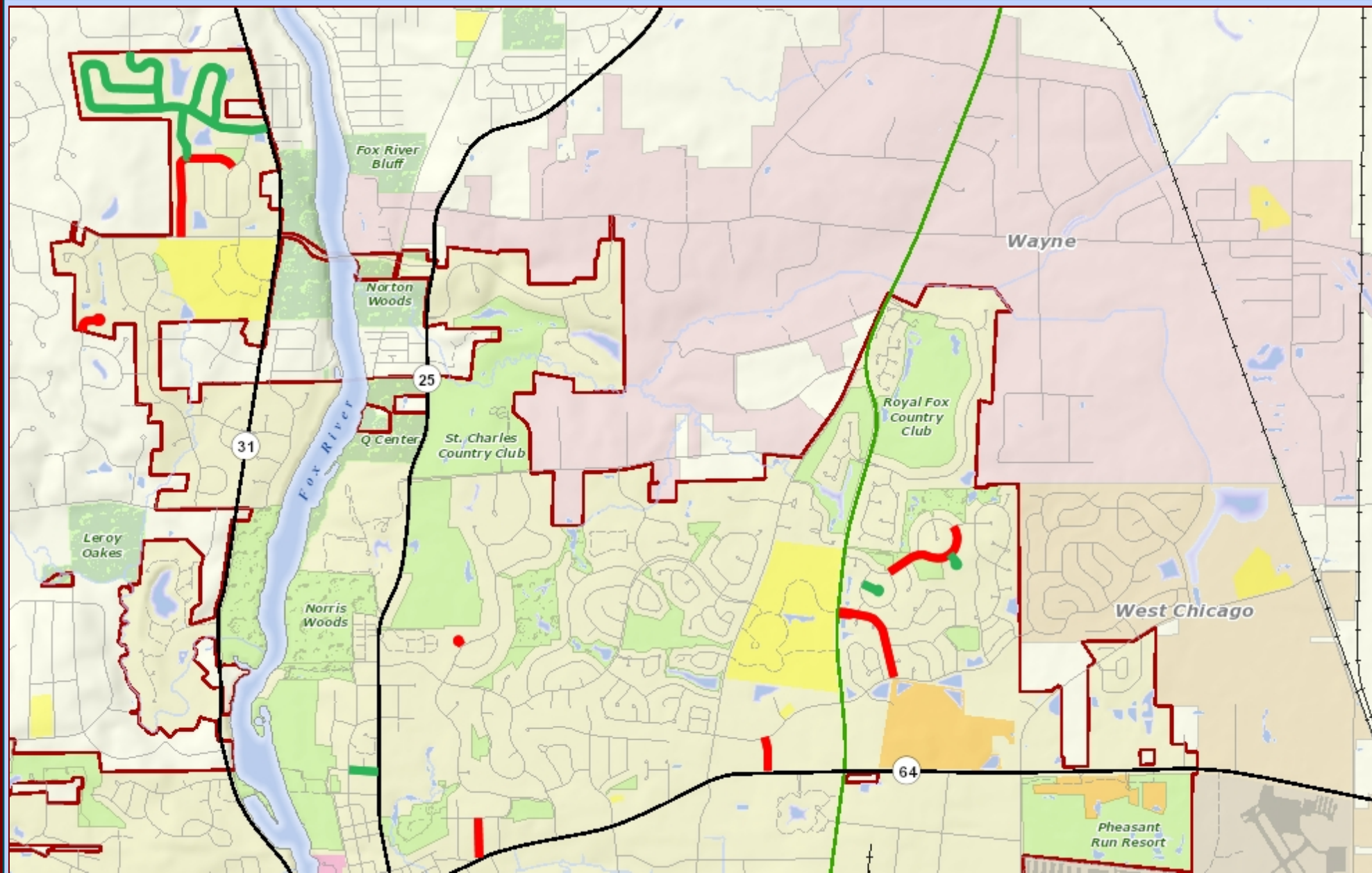
Data Source:  
City of St. Charles, Illinois  
Kane County, Illinois  
DuPage County, Illinois  
Projection: Transverse Mercator  
Coordinate System: Illinois State Plane East  
North American Datum 1983  
Printed on: March 20, 2020 11:35 AM



Green - Fill cracks 1/8" and larger  
Red - Fill edge and centerline only  
Blue - Fill centerline only

This work was created for planning purposes only and is provided as is, without warranty of any kind, either expressed or implied. The information represented may contain proprietary and confidential property of the City of St. Charles, Illinois. Under United States Copyright protection laws you may not use, reproduce, or distribute any part of this document without prior written permission. To obtain written permission please contact the City of St. Charles at Two East Main Street, St. Charles, IL 60174.  
Powered by InRoads GIS





Data Source:  
City of St. Charles, Illinois  
Kane County, Illinois  
DuPage County, Illinois  
Projection: Transverse Mercator  
Coordinate System: Illinois State Plane East  
North American Datum 1983  
Printed on: March 20, 2020 07:30 AM



0 1,333 2,667 Feet

Green - Fill cracks 1/8" and larger  
Red - Fill edge and centerline only  
Blue - Fill centerline only

This work was created for planning purposes only and is provided as is, without warranty of any kind, either expressed or implied. The information represented may contain proprietary and confidential property of the City of St. Charles, Illinois. Under United States Copyright protection laws you may not use, reproduce, or distribute any part of this document without prior written permission. To obtain written permission please contact the City of St. Charles at Two East Main Street, St. Charles, IL 60174.  
Powered by InRoads GIS