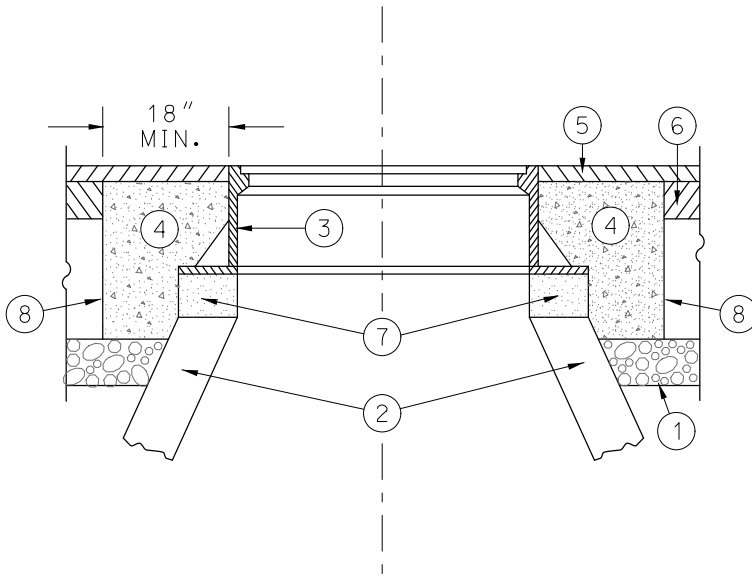


LEGEND



- ① SUB-BASE GRANULAR MATERIAL
- ② EXISTING STRUCTURE
- ③ FRAME AND LID (SEE NOTE)
- ④ CLASS SI CONCRETE
- ⑤ PROPOSED HMA SURFACE COURSE
- ⑥ PROPOSED HMA BINDER COURSE
- ⑦ 2 MAX. PRECAST CONCRETE ADJUSTING RINGS, MORTARED WITH STEEL SHIMS.
- ⑧ FULL DEPTH SAW CUT

NOTE :

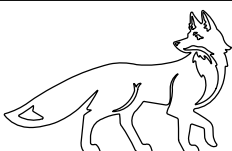
EXISTING FRAMES AND LIDS ARE THE PROPERTY OF THE CITY OF ST. CHARLES AND SHALL BE REMOVED AND RETURNED TO THE CITY OF ST. CHARLES.

CONSTRUCTION PROCEDURES

AFTER PAVEMENT MILLING AND PLACEMENT OF HMA BINDER:

- A) FULL DEPTH SAW CUT 5' X 5' SQUARE OR DIAMOND AROUND CENTER OF FRAME TO BE ADJUSTED.
- B) REMOVE FRAME, EXISTING PAVEMENT AND AGGREGATE MATERIAL TO A DEPTH OF 2" BELOW TOP OF MANHOLE STRUCTURE & 2" BELOW BOTTOM OF LOWEST ADJUSTMENT RING.
- C) INSTALL FRAME AND LID TO MATCH PROPOSED HMA PAVEMENT SURFACE GRADE USING MORTAR, STEEL SHIMS EMBEDDED IN MORTAR, AND PRECAST CONCRETE ADJUSTING RINGS.
- D) COMPACT EXISTING AGGREGATE STONE BASE.
- E) FILL 5'X5' SURROUNDING SPACE WITH IDOT APPROVED CLASS SI CONCRETE TO THE SAME ELEVATION OF THE TOP OF THE BINDER COURSE.
- F) PAVE SURFACE COURSE OVER 5' X 5' CONCRETE COLLAR.
- G) STRUCTURE SHALL BE CLEANED OF DEBRIS AFTER FRAME ADJUSTMENT IS COMPLETED.

THE PROCEDURE EXPLAINED ABOVE SHALL CONFORM TO THE APPLICABLE PORTIONS OF SECTIONS 353, 406, 602, AND 603 OF THE IDOT STANDARD SPECIFICATIONS.



CITY OF ST. CHARLES
ILLINOIS • SINCE 1834
Pride of the Fox

FRAME & LID ADJUSTMENT WITH CONCRETE COLLAR

DATE: 9-10-2021

NOT TO SCALE

REVISED:

DRAWING NO. D-02