

# GREEN INFRASTRUCTURE & YOUR BACKYARD

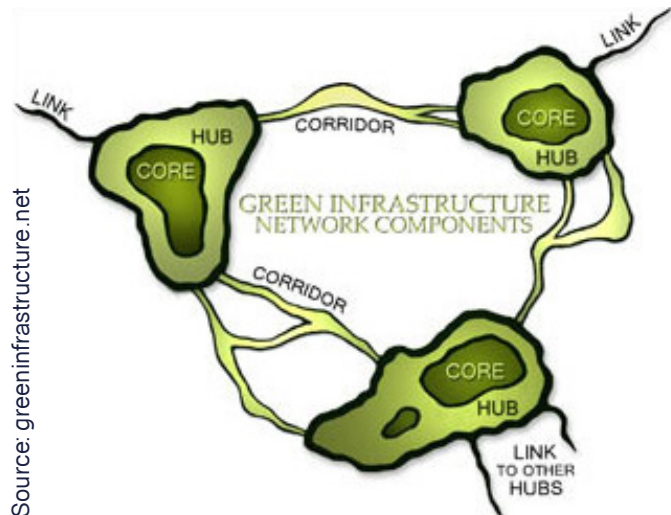
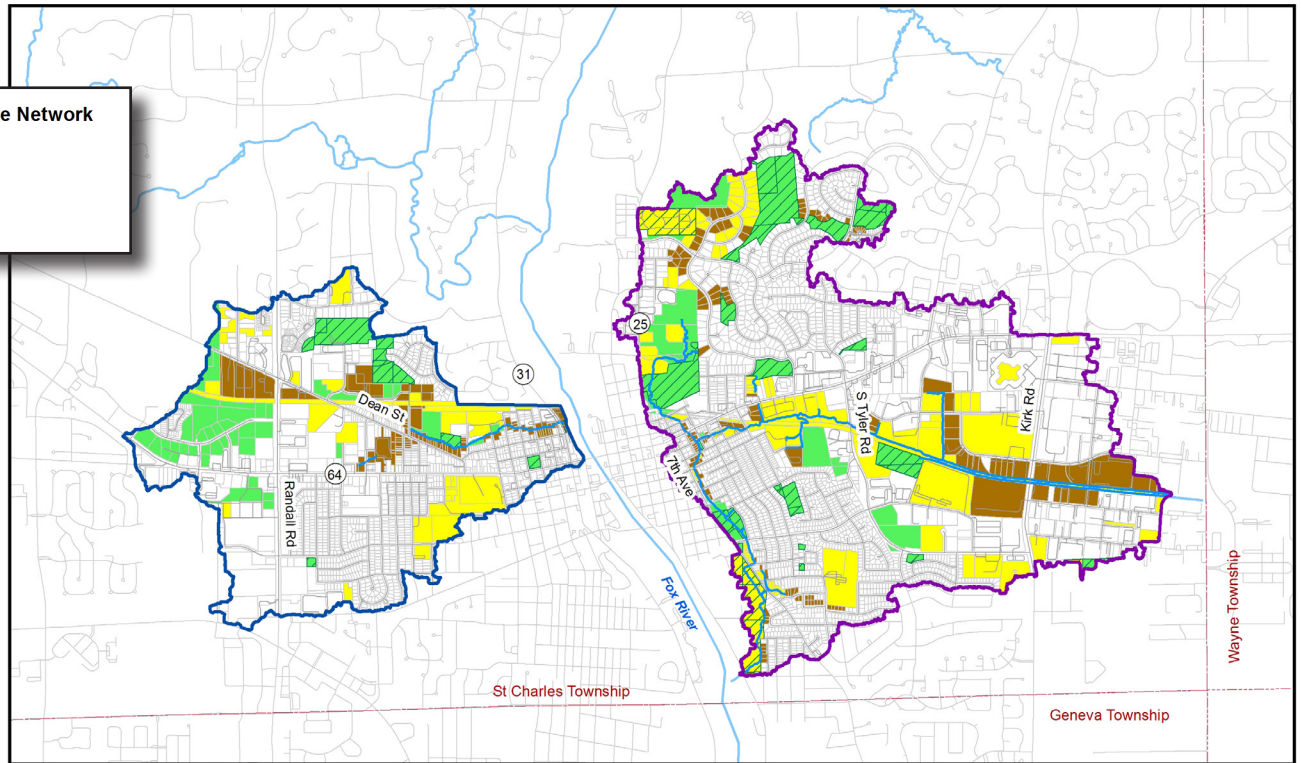
## GREEN INFRASTRUCTURE NETWORK

**A** Green Infrastructure Network is a connected system of natural areas and other open space that conserves natural ecosystem values and functions, sustains clean air and water, and provides a wide array of benefits to wildlife and people.

The network (see map, right) is made up of hubs and linking corridors. Hubs generally consist of the largest and least fragmented areas such as Persimmon Woods Park, Timber Trails Park, and Delnor Woods Park. Corridors are generally formed by smaller private residential parcels along developed reaches of State Street & 7th Avenue Creeks and tributaries. Corridors are extremely important because they provide biological conduits between hubs. However, most parcels forming corridors are not ideal green infrastructure until residents and landowners embrace the idea of managing stream corridors or creating backyard habitats.

### Green Infrastructure Network Categories

- Open
- Partially Open
- Developed GIN



Source: greeninfrastructure.net



RAIN BARREL

Source: Rainbarrelsource.com



RAIN GARDEN



If a portion of a stream runs through your backyard, here are some tips to help properly manage your piece of the green infrastructure network:

#### 1. NO DUMPING

Avoid dumping yard waste and clear heavy debris jams.

#### 2. MANAGE FERTILIZER USE

Avoid over fertilizing lawns adjacent to streams and only use phosphorus when soil testing shows that it is necessary.

#### 3. REMOVE NON-NATIVE SPECIES

Identify and remove plants that are out of place (see photo guide, right).

#### 4. PLANT NATIVE VEGETATION

Plants adapted to the Midwest climate can help control erosion by stabilizing banks.

#### 5. A NATURAL, MEANDERING STREAM IS A HAPPY STREAM

Work with experts to restore degraded streams.

For more detailed information, check out the Lake County Stormwater Management Commission's booklet, "Riparian Area Management: A Citizen's Guide," at [www.lakecountyil.gov/stormwater](http://www.lakecountyil.gov/stormwater).

Any property owner can improve green infrastructure. Create a safe place for wildlife by providing a few simple things such as food, water, cover, and a place for wildlife to raise their young. The National Wildlife Federation's Certified Wildlife Habitat® and the Conservation Foundation's Conservation@Home programs can help you get started.

Creating a rain garden, or a small vegetated depression, to capture water is another way of promoting infiltration while beautifying your yard and providing additional habitat. Disconnecting your roof downspouts and capturing that runoff in rain barrels not only reduces the amount of runoff entering streams, but also serves as a great source of water for irrigating your yard.



STREAM RESTORATION



Source: Appalachian Traveller.

## REMOVE THESE NON-NATIVE AND INVASIVE SPECIES

COMMON REED



BUCKTHORN



Source: Lorasedu.

REED CANARY GRASS



GARLIC MUSTARD



TEASEL

