

NORTH ELEVATION (RESIDENTIAL ENTRY)

BUILDING HEIGHTS MATCH MASTER PLAN ELEVATION



- LAP SIDING: HARDIE "SAIL CLOTH"
- STRAIGHT SHINGLE SIDING: HARDIE "MOUNTAIN SAGE"
- LIGHT TRIM & ACCENT SIDING: HARDIE "MOUNTAIN TAUPE"
- DARK TRIM: HARDIE "WOODSTOCK BROWN"
- COPING, STOREFRONT, GUTTERS & DOWNSPOUTS: STANDARD DARK BROWN





2 EAST EXTERIOR ELEVATION
1/8" = 1'-0"



1 NORTH EXTERIOR ELEVATION
1/8" = 1'-0"

GENERAL NOTES

- 1. PROVIDE DETAIL MEMBRANES, FLASHINGS AND SEALANTS AT OPENINGS AS REQUIRED FOR CONTINUOUS AIR AND VAPOR BARRIER SYSTEM.
- 2. SEAL ALL PENETRATIONS AT FLASHINGS AND AIR BARRIERS. METAL FLASHING TO TURN UP A MINIMUM OF 2" AT INTERIOR OF CAVITY OR AS INDICATED (WHICHEVER IS GREATER).
- 3. ALL PRE-RESISTIVE JOINT SYSTEMS DELAIGTED DESIGN.
- 4. ROOF PENETRATION FLASHING TO BE FOR TESTING MANUFACTURER'S SUBMITTALS.
- 5. AT STONE VENEER PROVIDE MOVEMENT JOINTS, SPACING AS RECOMMENDED BY THE STONE INDUSTRY ASSOCIATION GUIDELINES FOR THIN BRICK VENEER (MAXIMUM SPACING BETWEEN JOINTS), MOVEMENT JOINTS TO ALIGN WITH WINDOW JAMBES.
- 6. SECURE UPTURNED FLEXIBLE/STAINLESS FLASHINGS WITH TERMINATION BAR AND SEALANT.
- 7. PROVIDE PLASTIC ISOLATION WITH REMOVABLE TYPING BEAD AT ALL CONDITIONS WHERE CURBSID BOARD BUTTS INTO CORNER, WINDOW OR COUNTERTOP FINISHES. PROVIDE METAL TRIM BEHIND ALL CORNER BOND AND OUTSIDE CORNER CONDITIONS U.A.D.
- 8. TOTAL BUILDING ENVELOPE SUBMITTING CONDITIONS SPACE SHALL COMPLY WITH IECC 2019 REQUIREMENTS. SEE CODE INFORMATION ON SHEET A043 FOR ADDITIONAL INFORMATION.
- 9. EXTERIOR BARRIER WALLS AT BUILDING LEVELS 2 & 3 REQUIRE MIN. 1#4 BARS @ 16" ON CENTER PER ICC CONSTRUCTION TYPE REQUIREMENTS AS NOTED OR AISC. SEE A043 FOR TYPICAL WALL CONSTRUCTION AND COMPLY WITH UL LISTING REQUIREMENTS.
- 10. FIRE OPERATIONAL WALL FOR BUILDING IS REQUIRED ON WEST ELEVATION AS NOTED ON A043. MIN. HOUR RATING IS REQUIRED. SEE L14 L14R FOR TYPICAL WALL CONSTRUCTION AND COMPLY WITH ALL LISTING REQUIREMENTS.
- 11. TYPICAL EXTERIOR WALL MOUNTED LIGHT FIXTURES AT DOORS TO BE CENTERED IN PERS AT ENTRY AND RETAIL LOCATIONS PROVIDED TO BE CENTERED ABOVE THE DOOR IF STAMPELL LETTERS.

OWNER
SHODEEN
 Shodeen Group, L.L.C.
 77 N 1st St
 Geneva, IL 60134

ARCHITECT
SHEEHAN NAGLE HARTRAY ARCHITECTS
 SHEEHAN NAGLE HARTRAY ARCHITECTS
 130 EAST RANDOLPH STREET, SUITE 1100
 CHICAGO, IL 60601

M/E/P ENGINEER
WT Group
 WT Group
 2875 Pruden Ave
 Hoffman Estates, IL 60132

STRUCTURAL ENGINEER
GRAEF
 Graef
 332 South Michigan Ave, Suite 1400
 Chicago, IL 60604

ARCHITECTURAL
 THESE DRAWINGS AND PLANS HAVE BEEN PREPARED UNDER MY DIRECT SUPERVISION AND TO THE BEST OF MY KNOWLEDGE AND BELIEF, CONFORM TO THE BUILDING CODES AND ORDINANCES OF HANCOCK COUNTY, IL.

No.	Description	Revised

PRAIRIE CENTER MIXED USE D1

ST. CHARLES, ILLINOIS

NORTH & EAST ELEVATIONS

A210.1

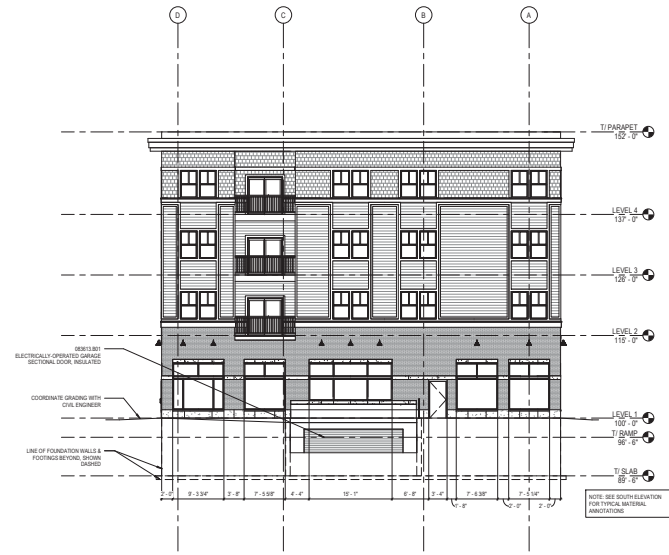
E

D

C

B

A



2 WEST EXTERIOR ELEVATION
1/8" = 1'-0"



1 SOUTH EXTERIOR ELEVATION
1/8" = 1'-0"

GENERAL NOTES

1. PROVIDE DETAIL MEMBRANES, FLASHINGS AND SEALANTS AT OPENINGS AS REQUIRED FOR CONTINUOUS AIR AND VAPOR BARRIER SYSTEM.
2. SEAL ALL FINISH INTERFACES AT FLASHINGS AND AIR BARRIERS. METAL FLASHING TO TURN UP A MINIMUM OF 2" AT INTERIOR OF CAVITY OR AS INDICATED (WHICHEVER IS GREATER).
3. ALL FIRE RESISTIVE JOINT SYSTEMS DELEGATED DESIGN.
4. ROOF PENETRATION FLASHING TO BE PER ROOFING MANUFACTURER'S DETAILING.
5. ALL 6" STONE VENEER PROVIDE MINIMUM GREYE SPACING AS RECOMMENDED BY THE BRICK INDUSTRY ASSOCIATION GUIDELINES FOR FINISH VENEER (MAXIMUM 8" SPACING BETWEEN JOINTS). MOVEMENT JOINTS TO ALIGN WITH BENCH LINES.
6. SECURE UPENDED FLEXIBLE/TIMBEROUS FLASHINGS WITH TERMINATION BAR AND SEALANT.
7. PROVIDE PLASTIC SCHED TRIM WITH REMOVABLE TAPPING BEAD AT ALL CONDITIONS WHERE CYCLAM BOARD BUTTS INTO DOOR, WINDOW OR CORNER WALL FRAMES. PROVIDE METAL TRIM BEAD AT ALL CORNER BOUNDED AND OUTSIDE CORNER CONDITIONS UNLESS NOTED.
8. TOTAL BUILDING ENVELOPE AIR-STOPPING CONDITIONED SPACE SHALL COMPLY WITH ICC 2018 REQUIREMENTS. SEE CODE INFORMATION ON GREEK AND FOR ADDITIONAL INFORMATION.
9. EXTERIOR BEARING WALLS AT BUILDING 3 LEVELS 2 & 3 REQUIRE MIN. 1-HR RATING (E.A. 1-HR PER IBC CONSTRUCTION TYPE REQUIREMENTS AS NOTED ON A-5). SEE A-5 FOR TYPICAL WALL CONSTRUCTION AND COMPLY WITH ALL LISTING REQUIREMENTS.
10. FIRE SEPARATION WALL, FOR BUILDING 3 REQUIRED ON REEF ELEVATION AS NOTED ON A-5. MIN. 1-HOUR RATING IS REQUIRED. SEE A-5 FOR TYPICAL WALL CONSTRUCTION AND COMPLY WITH ALL LISTING REQUIREMENTS.
11. TYPICAL EXTERIOR WALL MOUNTED LIGHT FIXTURES AT DOORS TO BE CENTERED IN PIER AT ENTRY AND RETAIL LOCATIONS. FIXTURES TO BE CENTERED ABOVE THE DOOR AT EXHIBITABLE ENTRY.

OWNER
SHODEEN

Shodeen Group, L.L.C.
77 N 1st St
Geneva, IL 60134

ARCHITECT
SHEEHAN NAGLE HARTRAY ARCHITECTS

SHEEHAN NAGLE HARTRAY ARCHITECTS
130 EAST RANDOLPH STREET, SUITE 3100
CHICAGO, IL 60601

M/E/P ENGINEER
WT Group

WT Group
2875 Prater Ave
Hoffman Estates, IL 60192

STRUCTURAL ENGINEER
GRAEF

Graef
332 S. Michigan Ave. Suite 1400
Chicago, IL 60604

ARCHITECTURAL
THESE DRAWINGS AND PLANS HAVE BEEN PREPARED UNDER MY DIRECT SUPERVISION AND TO THE BEST OF MY KNOWLEDGE AND BELIEF, CONFORM TO THE BUILDING CODES AND ORDINANCES OF KANE COUNTY, IL.

No.	REVISION/DESCRIPTION	DATE

PRAIRIE CENTER MIXED USE D1

ST. CHARLES, ILLINOIS

SOUTH & WEST ELEVATIONS

A210.2

SCALE: AS NOTED
© 2019 SHODEEN NAGLE HARTRAY ARCHITECTS, LTD.

6

5

4

3

2

1