

EXISTING		PROPOSED	
---	BOUNDARY	---	BOUNDARY
---	LOT LINE	---	LOT LINE
---	EASEMENT	---	EASEMENT
---	CENTERLINE	---	CENTERLINE
---	MAJOR CONTOUR	---	5280
---	MINOR CONTOUR	---	5278
---	CURB / GUTTER	---	CURB / GUTTER
---	BUILDING	---	BUILDING
---	SAWCUT	---	SAWCUT
---	STORM DRAIN	---	STORM DRAIN
---	STORM CLEANOUT	---	STORM CLEANOUT
---	STORM INLET	---	STORM INLET
---	STORM MANHOLE	---	STORM MANHOLE
---	SANITARY	---	SANITARY
---	SANITARY CLEANOUT	---	SANITARY CLEANOUT
---	SANITARY MANHOLE	---	SANITARY MANHOLE
---	WATERLINE	---	WATERLINE
---	FIRE HYDRANT	---	FIRE HYDRANT
---	WATER VALVE	---	WATER VALVE
---	WATER MANHOLE	---	WATER MANHOLE
---	LIGHT POLE	---	LIGHT POLE
---	TRANSFORMER	---	TRANSFORMER
---	ELEC VAULT	---	ELEC VAULT
---	SIDEWALK RAMP	---	SIDEWALK RAMP

HATCH LEGEND	
[Hatch Pattern]	PROPOSED CONCRETE SIDEWALK
[Hatch Pattern]	PROPOSED HEAVY DUTY ASPHALT PAVING
[Hatch Pattern]	PROPOSED LIGHT DUTY ASPHALT PAVING
[Hatch Pattern]	PROPOSED PLANTING AREA

- SITE NOTES**
- CONTRACTOR TO FIELD-VERIFY EXISTING CONDITIONS PRIOR TO CONSTRUCTION AND SHALL NOTIFY ENGINEER OF ANY DISCREPANCIES. ENGINEER WILL NOT BE LIABLE FOR ANY COSTS ASSOCIATED WITH CHANGES TO THE DESIGN WITHOUT PROPER NOTIFICATION.
 - SEE COVER SHEET FOR BENCHMARK, BASIS OF BEARINGS, AND SURVEY INFORMATION.
 - DIMENSIONS ARE TO BACK OF CURB AND BUILDING FACE UNLESS OTHERWISE NOTED.
 - PAVEMENT THICKNESS AND DESIGN ARE PER THE GEOTECHNICAL REPORT.
 - ACCESSIBLE CURB RAMP SHALL BE CONSTRUCTED WITH DETECTIBLE WARNING PADS IF REQUIRED BY LOCAL CRITERIA.
 - CONTRACTOR SHALL REMOVE AND REPLACE CURB, GUTTER, PAVING, LANDSCAPE, AND ANY OTHER ITEMS DAMAGED DURING CONSTRUCTION.
 - ALL PROPOSED STRIPING TO BE 4" WIDE PAINTED YELLOW STRIPE, UNLESS NOTED OTHERWISE.

SITE DATA

PROPERTY AREA:	±328,432F (7.54 AC)
BUILDING AREA:	
BUILDING 1:	±16,150 SF
BUILDING 2:	±18,000 SF
BUILDING 3:	±16,150 SF
BUILDING 4:	±20,000 SF
TOTAL BUILDING G.F.A.:	70,300 SF

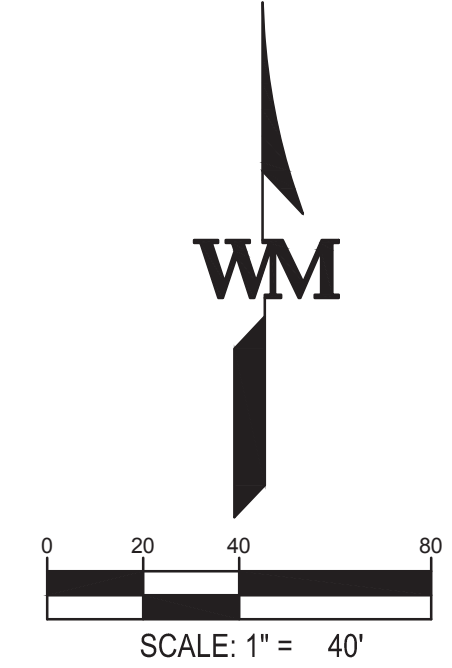
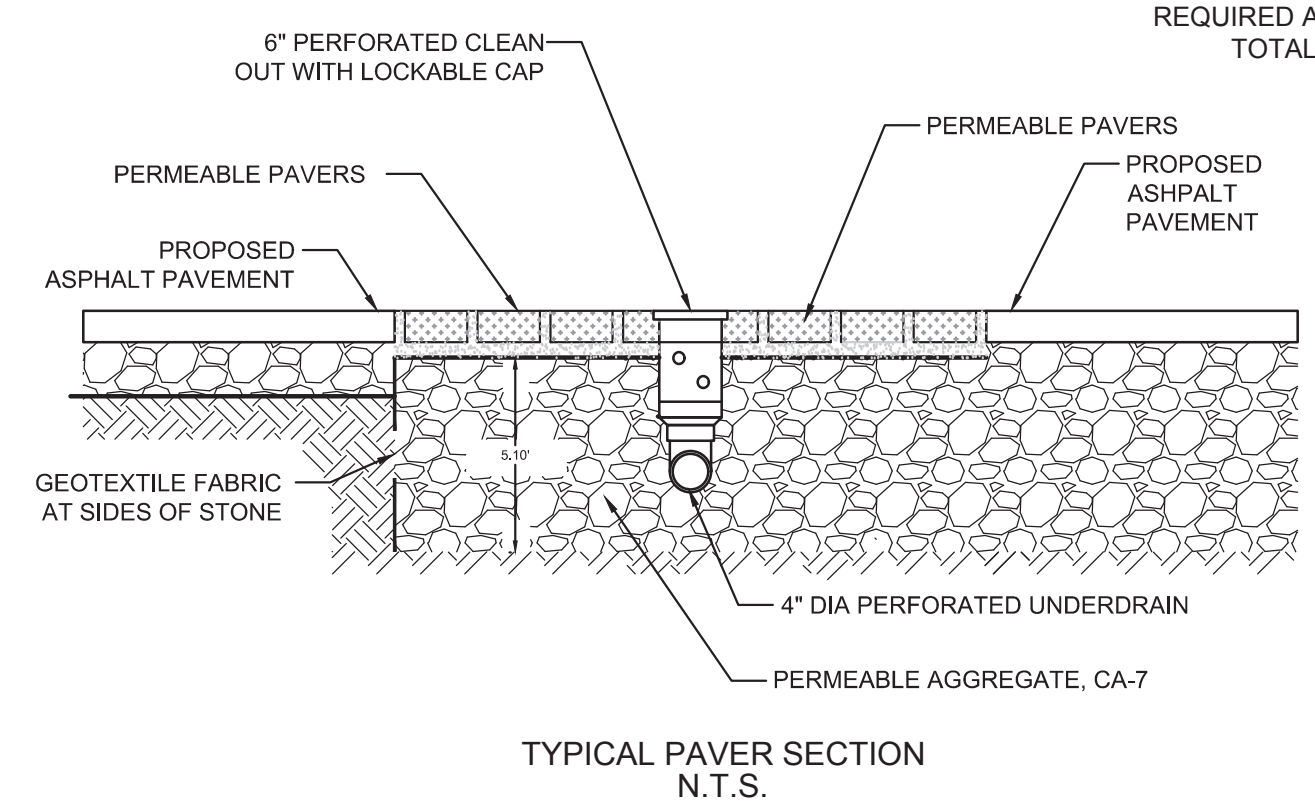
REQUIRED PARKING PER CITY OF ST. CHARLES PUD STANDARD AT 4 SPACES PER 1,000 SF FOR RETAIL & OFFICE SPACE AND 15 SPACES PER 1,000 SF OF RESTAURANT SPACE

ASSUME 14,000 SF RESTAURANT SPACE & 56,300 SF RETAIL & OFFICE SPACE.

RESTAURANT PARKING:	210 SPACES
RETAIL & OFFICE PARKING:	225 SPACES
TOTAL REQUIRED PARKING:	435 SPACES

TOTAL PROVIDED PARKING	
ON-SITE DEDICATED:	347 SPACES
SHARED SPACES:	87 SPACES
TOTAL PROVIDED SPACES:	434 SPACES

REQUIRED ADA SPACES:	9 (FOR 401-500 SPACES)
TOTAL PROVIDED:	10 SPACES



WARE MALCOLM
LEADING DESIGN FOR COMMERCIAL REAL ESTATE

1315 22nd street
suite 410
oak brook, il 60523
p 630.218.0063
waremalcomb.com

FOR AND ON BEHALF OF WARE MALCOLM

FOX HAVEN SQUARE
PRELIMINARY ENGINEERING
502 N KIRK RD.
ST. CHARLES, IL 60174

PRELIMINARY SITE PLAN

NO.	DATE	REMARKS

JOB NO.:	CH23-0124
PA / PM:	J. GRZYWA
DESIGNED:	T. SNOW
DATE:	1-19-24
PLOT DATE:	01/19/24

SHEET
C3.0
Sheet 4 of 8

LANDSCAPE CALCULATIONS

Parkway Trees - Kirk Road: 548 I.f.
 Required: 1 tree per 60' = 9 Trees
 Parkway Trees Provided = 9

Public Street Frontage Landscaping - Kirk Road: 548 I.f.
 Required: 1 tree per 50' = 11, plus screening @ 75% = 411 I.f.
 Trees Provided = 11 (6 ornamental & 5 shade trees)
 Landscape Screening Provided = 412 I.f.

Parking Lot Screening - Parking Lot Length: 370 I.f.
 Required: 50% or 185 I.f.
 Landscape Screening Provided = 204 I.f.

The following list of quality trees and shrubs will be used for final plant selections:

PLANT LIST

BOTANICAL NAME COMMON NAME

DECIDUOUS SHADE TREES

Acer f. 'Jeffersred'	Autumn Blaze Freeman Maple
Acer f. 'Marmo'	Marmo Freeman Maple
Acer m. 'Morton'	State Street Maple
Aesculus x c. 'F. McNair'	Fort McNair Horsechestnut
Catalpa speciosa	Northern Catalpa
Celtis occidentalis	Hackberry
Ginkgo b. 'Autumn Gold'	Autumn Gold Ginkgo
Ginkgo b. 'Princeton Sentry'	Princeton Sentry Ginkgo
Gleditsia l. 'Skyline'	Skyline Honeylocust
Gymnocladus dioica	Kentucky Coffeetree
Gymnocladus d. 'Espresso'	Espresso Kentucky Coffeetree
Platanus x a. 'Morton Circle'	Exclamation London Planetree
Quercus bicolor	Swamp White Oak
Quercus imbricaria	Shingle Oak
Quercus macrocarpa	Burr Oak
Quercus muhlenbergii	Chinkapin Oak
Quercus rubra	Red Oak
Quercus r. 'Long'	Regal Prince English Oak
Taxodium d. 'Mickelson'	Shawnee Brave Bald Cypress
Tilia a. 'Redmond'	Redmond Linden
Tilia e. 'Greenspire'	Greenspire Linden
Ulmus 'Frontier'	Frontier Elm
Ulmus 'Morton'	Acolade Elm

EVERGREEN TREES

Picea abies	Norway Spruce
Picea g. 'Densata'	Black Hills Spruce
Picea pungens	Colorado Green Spruce
Picea p. 'Glaucia'	Colorado Blue Spruce
Picea p. 'Fat Albert'	Fat Albert Colorado Spruce
Pinus f. 'Vanderwolf's Pyramid'	Vanderwolf's Pyramid Limber Pine
Pinus strobus	Eastern White Pine
Pinus s. 'Fastigiata'	Fastigate White Pine
Pseudotsuga menziesii	Douglas Fir
Thuja o. 'Green Giant'	Green Giant Arborvitae
Tsuga canadensis	Canadian Hemlock

DECIDUOUS ORNAMENTAL TREES

Amelanchier g. 'Autumn Brilliance'	Autumn Brilliance Serviceberry
Betula n. 'Cully'	Heritage River Birch
Carpinus caroliniana	American Hornbeam
Cercis canadensis	Eastern Redbud
Cornus alternifolia	Pagoda Dogwood
Crataegus c. inermis	Thornless Cockspear Hawthorn
Magnolia x 'Jane'	Jane Magnolia
Malus 'Donald Wyman'	Donald Wyman Crabapple
Malus 'Red Jewel'	Red Jewel Crabapple
Malus 'Prairie Fire'	Prairie Fire Crabapple
Malus s. 'Select A'	Malus s. 'Select A'
Malus s. 'Tina'	Sargent Tina Crabapple
Ostrya virginiana	American Hophornbeam
Syringa r. 'Ivory Silk'	Ivory Silk Tree Lilac
Syringa p. 'Morton'	China Snow Tree Lilac
Syringa p. 'Zhing Zhiming'	Beijing Gold Tree Lilac

DECIDUOUS SHRUBS & SHRUB ROSES

Aronia melanocarpa	Black Chokeberry
Aronia m. UCONNAM166'	Low Scape Hedger Chokeberry
Clethra a. 'Sixteen Candles'	Sixteen Candles Summersweet
Cornus racemosa	Grey Dogwood
Corylus americana	American Hazelnut
Cotoneaster acutifolia	Peking Cotoneaster
Cotoneaster 'Hessei'	Hessei Cotoneaster
Diervilla r. 'SMDNDRSF'	Black Kodiak Diervilla
Diervilla r. 'G2X8544'	Orange Kodiak Diervilla
Diervilla r. 'G2X85411'	Red Kodiak Diervilla
Diervilla s. 'Butterfly'	Butterfly Bush Honeysuckle
Diervilla s. 'LPDC Podaras'	Cool Splash Bush Honeysuckle
Diervilla splendens	Splendens Bush-Honeysuckle
Hamamelis vernalis	Ozark Witch Hazel
Hydrangea a. 'Annabella'	Annabelle Hydrangea
Hydrangea a. 'Abeowo'	Incrediball Hydrangea
Hydrangea p. 'LVOBO'	Bobo Hydrangea
Hydrangea p. 'Jane'	Little Lime Hydrangea
Hydrangea p. 'Limelight'	Limelight Hydrangea
Hydrangea p. 'Bulk'	Quick Fire Hydrangea
Hydrangea p. 'SMHPLQF'	Little Quick Fire Hydrangea
Hydrangea q. 'Pee Wee'	Pee Wee Oakleaf Hydrangea
Hydrangea s. 'MAKD'	Tiny Tuff Stuff Hydrangea
Hypericum k. 'SMHKB'	Blue Festival St. Johnswort
Physocarpus o. 'Little Devil'	Little Devil Ninebark

Physocarpus o. 'Ginger Wine'	Ginger Wine Ninebark
Physocarpus o. 'Seward'	Summer Wine Ninebark
Rhus a 'Gro-Low'	Gro-Low Sumac
Rosa species	Rosa species
Spiraea species	Spiraea
Syringa m. 'Pabbin'	Dwarf Korean Lilac
Syringa p. 'Miss Kim'	Miss Kim Lilac
Syringa 'SMSJBP7'	Boomerang Dark Purple Lilac
Viburnum c. 'SMVCB'	Spice Baby Viburnum
Viburnum 'Cayuga'	Koreanspice Viburnum
Viburnum d. 'Christom'	Blue Muffin Arrowwood Viburnum
Viburnum dentatum	Arrowwood Viburnum
Viburnum prunifolium	Sargent Firebird Crabapple
Viburnum d. 'Synnstedt'	Chicago Lustre Viburnum
Viburnum x. 'Ralph Senior'	Autumn Jazz Viburnum
Viburnum x. 'Juddi'	Judd Viburnum
Viburnum l. 'Mohican'	Mohican Viburnum
Viburnum x rhytidophyloides	Alleghany Viburnum
Weigela x. 'Dark Horse'	Dark Horse Weigela
Weigela florida species	Weigela

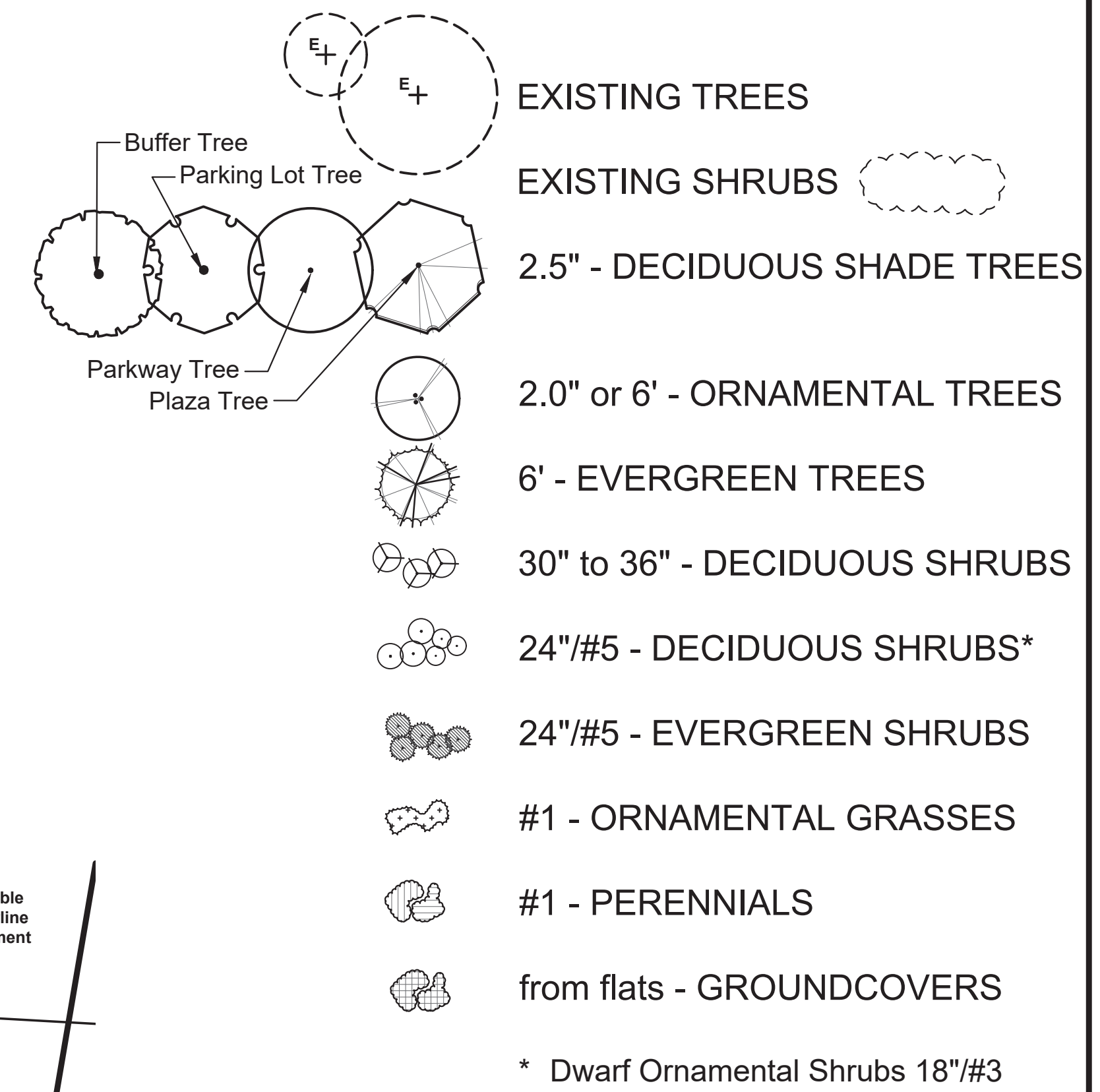
EVERGREEN SHRUBS

Juniper chinensis species	Chinese Juniper
Juniperus horizontalis species	Horizontal Juniper
Taxus m. 'Densiformis'	Dense Yew
Taxus m. 'Everflow'	Everlow Yew
Taxus m. 'Nickisii'	Hicks Yew
Thuja o. 'Smaragd'	Emerald Green Arborvitae

BROADLEAF EVERGREENS

Buxus m var. Koreaana 'Wintergreen'	Wintergreen Boxwood
Euonymus f. 'Emerald Gaiety'	Emerald Gaiety Euonymus
Euonymus f. 'Emerald 'n' Gold'	Emerald 'n' Gold Euonymus
Euonymus f. 'Sarcoxie'	Sarcoxie Euonymus
Euonymus f. 'Vegetus Low'	Low Bigleaf Euonymus

LEGEND



GENERAL NOTES:

Plant material shall be nursery grown and be either balled and bur-lapped or container grown. Sizes and spreads on plant list represent minimum requirements.

The requirements for measurement, branching and ball size shall conform to the latest addition of ANSI Z60.1, AMERICAN STANDARD OF NURSERY STOCK by the American Nursery & Landscape Association.

Any materials with damaged or crooked/disfigured leaders, bark abrasion, sunscald, insect damage, etc. are not acceptable and will be rejected. Trees with multiple leaders will be rejected unless called for in the plant list as multi-stem or clump (cl.).

If any mistakes, omissions, or discrepancies are found to exist with the work product, the Landscape Architect shall be promptly notified so that they have the opportunity to take any steps necessary to resolve the issue. Failure to promptly notify the Landscape Architect and the Owner of such conditions shall absolve them from any responsibility for the consequences of such failure.

Under no circumstances should these plans be used for construction purposes without examining actual locations of utilities on site, and reviewing all related documents mentioned herein, including related documents prepared by the project Civil Engineer and Architect.

Civil Engineering or Architectural base information has been provided by others. The location of various site improvements on this set of drawings is only illustrative and should not be relied upon for construction purposes.

Quantity lists are supplied as a convenience. However, Bidders and the Installing Contractor should verify all quantities. The drawings shall take precedence over the lists. Any discrepancies shall be reported to the Landscape Architect.

Actions taken without the knowledge and consent of the Owner and the Landscape Architect or in contradiction to the Owner and the Landscape Architect's work product or recommendations, shall become the responsibility not of the Owner and the Landscape Architect, but for the parties responsible for the taking of such action.

Refer to Civil Engineering documents for detailed information regarding size, location, depth and type of utilities, as well as locations of other site improvements, other than landscape improvements.

Plant symbols illustrated on this plan are a graphic representation of proposed plant material types and are intended to provide for visual clarity. However, the symbols do not necessarily represent actual plant spread at the time of installation.

All plant species specified are subject to availability. Material shortages in the landscape industry may require substitutions. All substitutions must be approved by the Village, Landscape Architect and Owner.

The Landscape Contractor shall verify location of all underground utilities prior to digging by calling "J.U.L.I.E." (Joint Utility Location for Excavators) 1-800-892-0123 and any other public or private agency necessary for utility location.

All perennial, ornamental grass, groundcover and annual beds shall be top dressed with a minimum of three inches (3") of mushroom compost. The top dressing shall be worked into the soil to a minimum depth of nine inches (9") by the use of a cultivating mechanism. Upon completion perennials & ornamental grasses shall be mulched with an additional two inch (2") layer of shredded wood mulch; Annuals & groundcovers shall be covered with a two inch (2") layer of southern pine bark fines mulch.

All other planting beds and tree saucers shall be mulched with a minimum of three inches (3") of shredded wood mulch.

Planting beds adjacent to building shall be mulched in their entirety to the building foundation. Plant materials shall not be installed under building overhangs and other such areas which do not receive natural rainfall.

Mulch beds at the time of planting shall extend a minimum of two feet (2') beyond the center of a shrub.

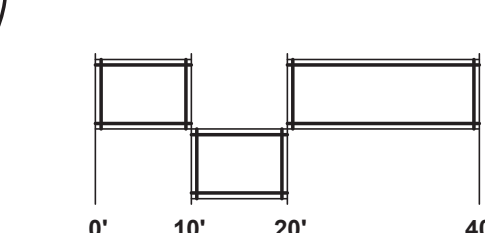
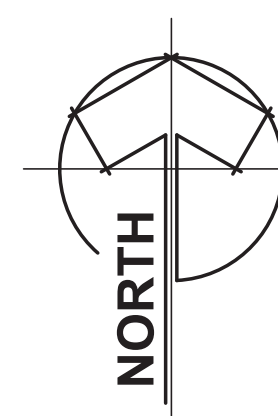
All bed lines and tree saucers shall require a hand spaded edge between lawn and mulched areas.

Grading shall provide slopes which are smooth and continuous. Positive drainage shall be provided in all areas.

Sod shall be mineral base only.

Seed mixes shall be applied mechanically so that the seed is incorporated into the top one-half inch (1/2") of the seed bed. The seed shall then be covered with the specified blanket (installed per manufacturer's specs) or Hydro-mulch.

All plant material shall be guaranteed for one (1) year from the date of acceptance.



REVISIONS	

FOX HAVEN SQUARE

502 N. Kirk Road
St Charles, Illinois

SEAL:

METZ & COMPANY
 LANDSCAPE ARCHITECTURE/SITE PLANNING

826 East Maple Street
 Lombard, Illinois 60148
 PH: 630.561.3903
 www.metz-company.com

TITLE
**PRELIMINARY
 LANDSCAPE
 PLAN**

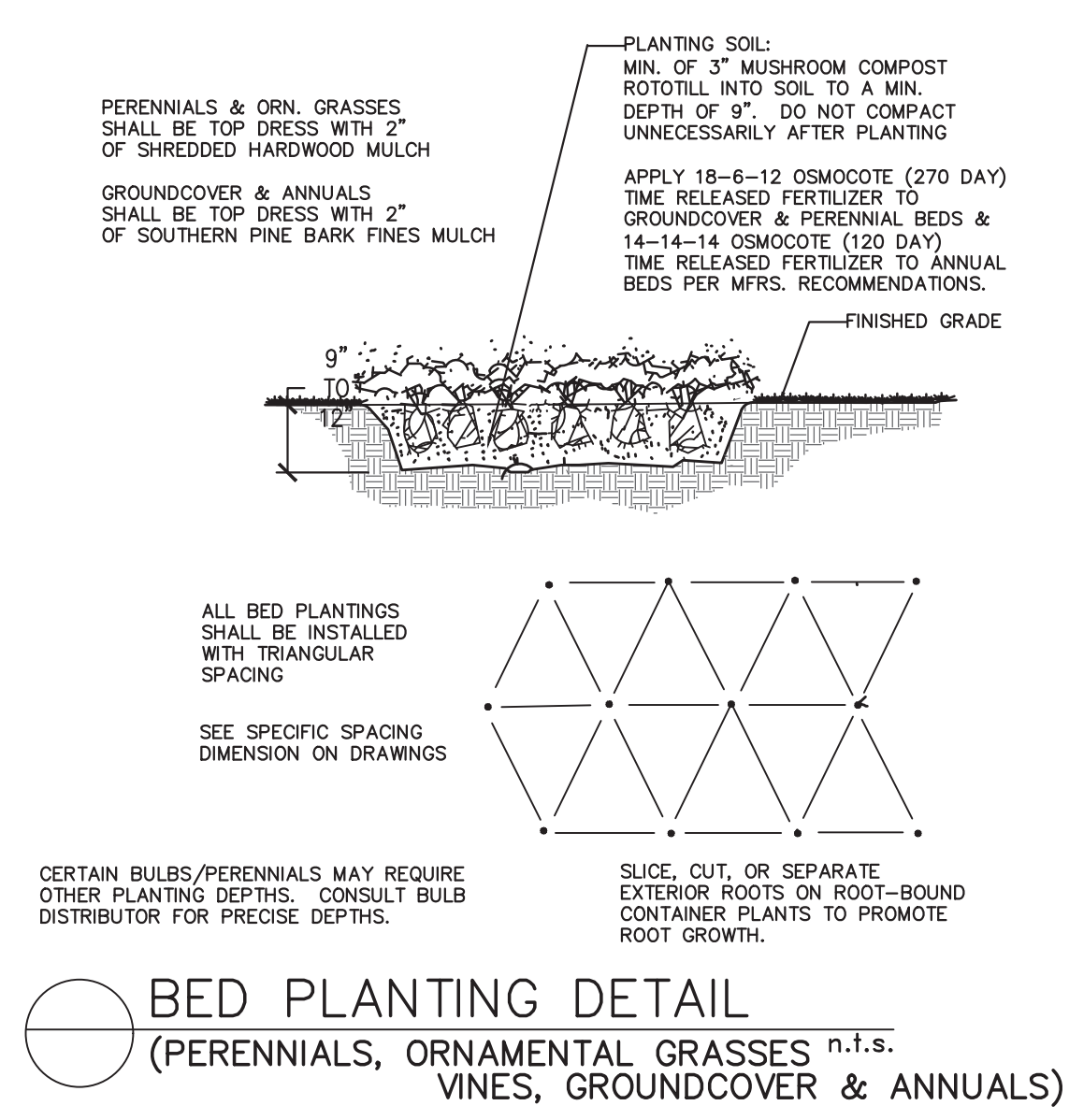
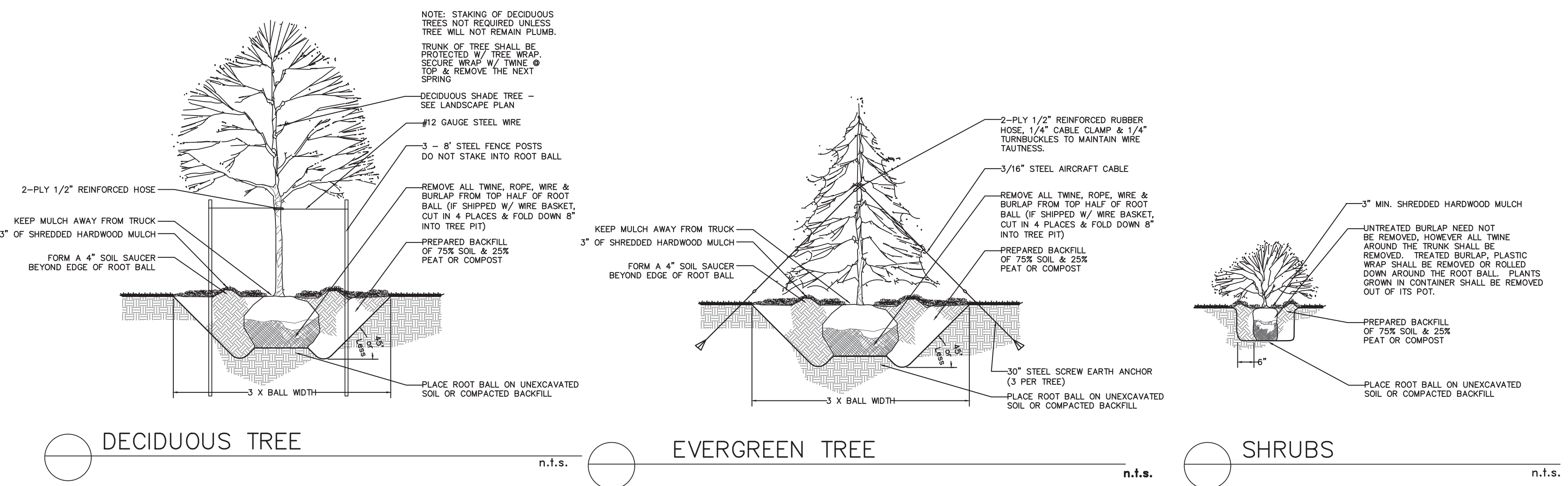
PROJECT NO.:
24-248

DATE: 1-19-2024
 SCALE: 1" = 20'

SHEET
L-1.0

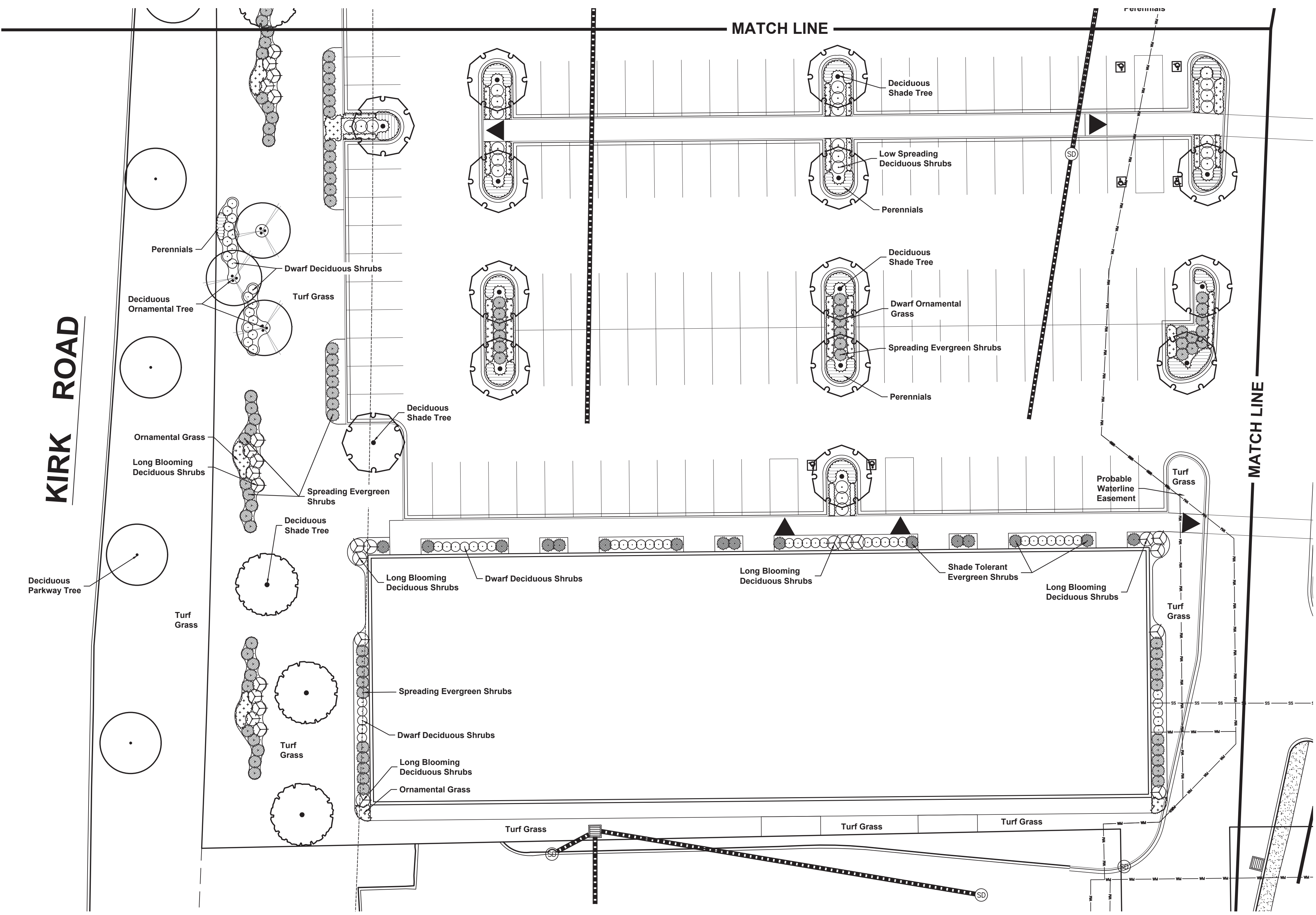
© Copyright 2024 all rights reserved. The design and any and all ideas contained herein are the sole property of Metz & Company. Any reproduction of the design or the concept embodied herein in any form, in whole or in part, without consent from Metz & Company is prohibited. If this plan is not 24" x 36" in size, then it is a reproduction that may not be to scale.

REVISIONS



DECIDUOUS TREE n.t.s. EVERGREEN TREE n.t.s. SHRUBS n.t.s.

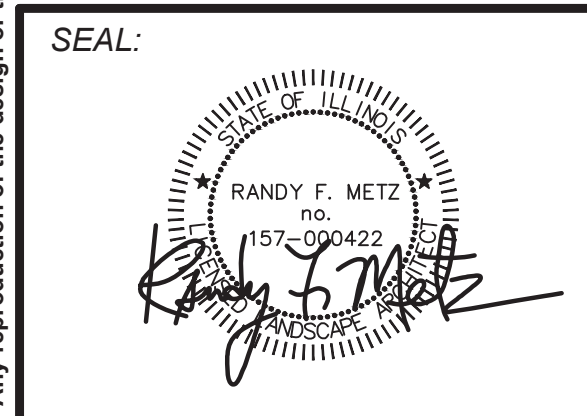
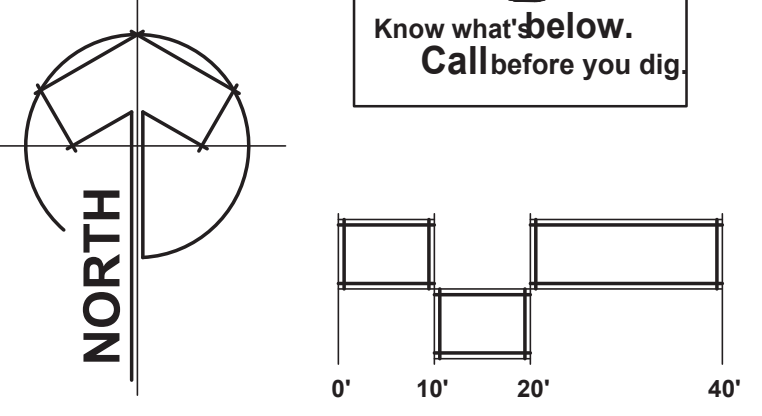
BED PLANTING DETAIL (PERENNIALS, ORNAMENTAL GRASSES, WINES, GROUNDCOVER & ANNUALS) n.t.s.



LEGEND

- EXISTING TREES
- EXISTING SHRUBS
- 2.5" - DECIDUOUS SHADE TREES
- 2.0" or 6' - ORNAMENTAL TREES
- 6' - EVERGREEN TREES
- 30" to 36" - DECIDUOUS SHRUBS
- 24"/#5 - DECIDUOUS SHRUBS*
- 24"/#5 - EVERGREEN SHRUBS
- #1 - ORNAMENTAL GRASSES
- #1 - PERENNIALS
- from flats - GROUNDCOVERS
- * Dwarf Ornamental Shrubs 18"/#3

KIRK ROAD



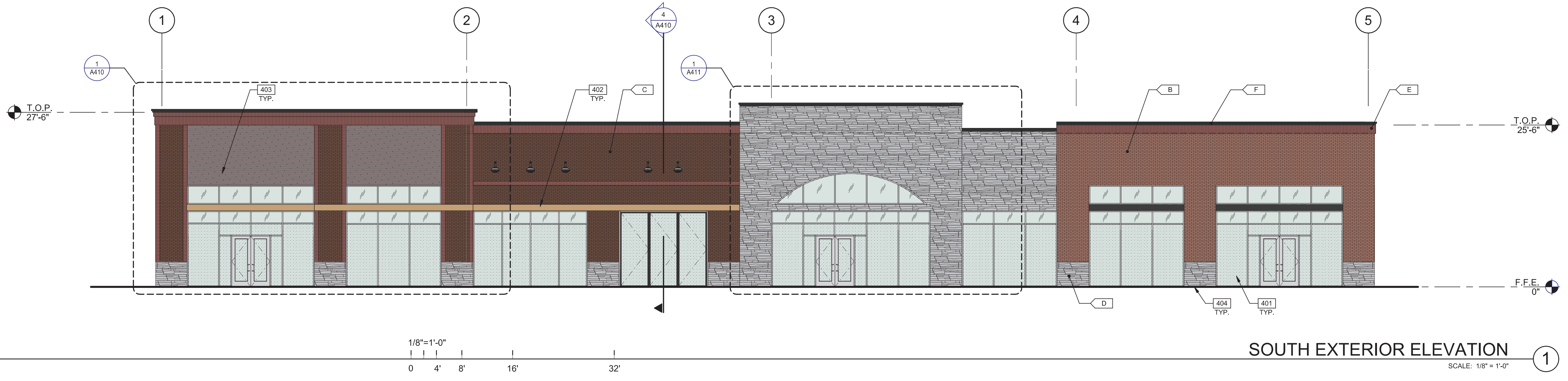
METZ & COMPANY
LANDSCAPE ARCHITECTURE/SITE PLANNING
826 East Maple Street
Lombard, Illinois 60148
PH: 630.561.3903
www.metz-company.com

TITLE
**PRELIMINARY
LANDSCAPE
PLAN**

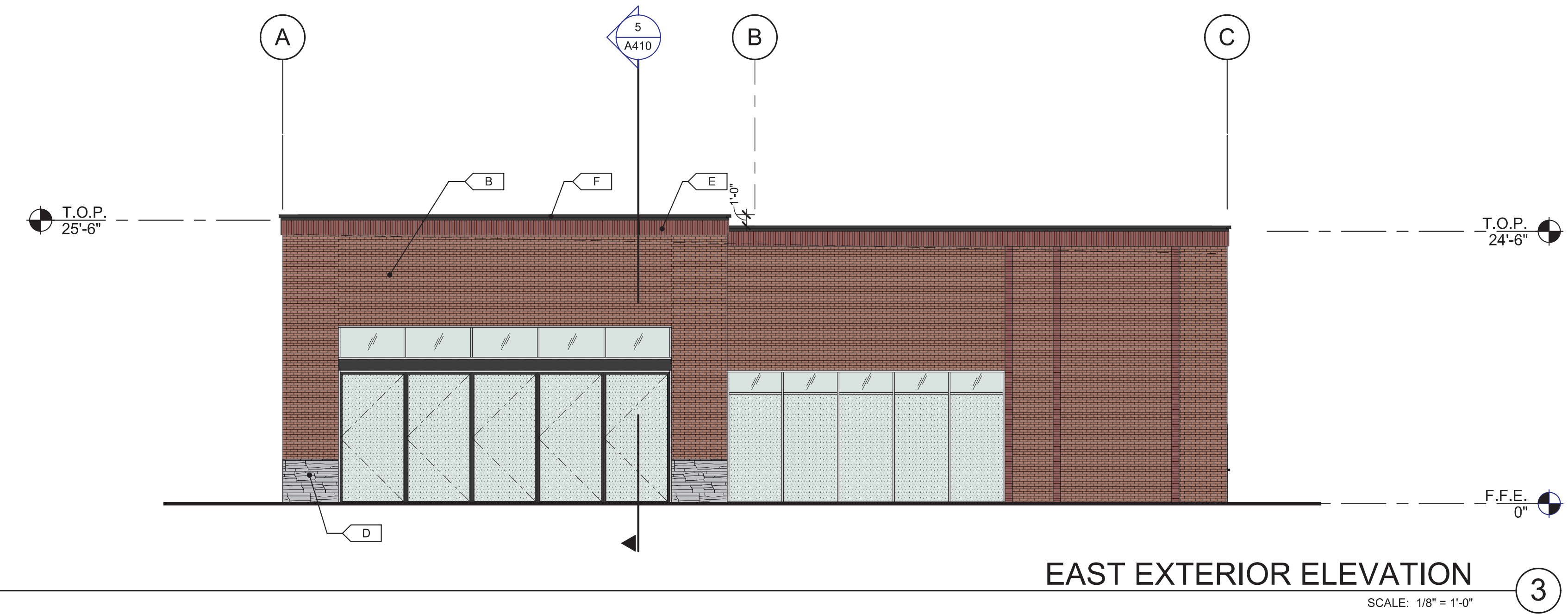
PROJECT NO.:
24-248
DATE: 1-19-2024
SCALE: 1"=20'

SHEET
L-2.0

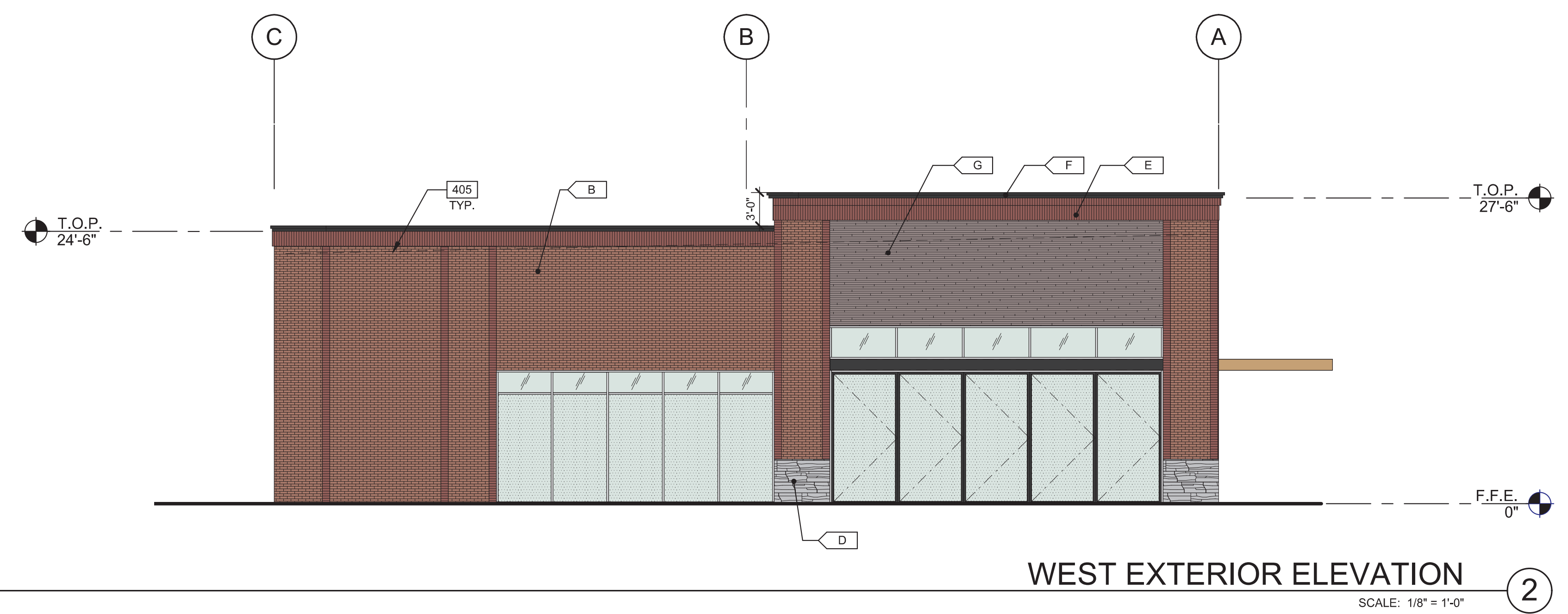
© Copyright 2024 all rights reserved. The design and any and all ideas contained herein are the sole property of Metz & Company. Any reproduction of the design or the concept embodied herein in any form, in whole or in part, without consent from Metz & Company is prohibited. If this plan is not 24" x 36" in size, then it is a reproduction that may not be to scale.



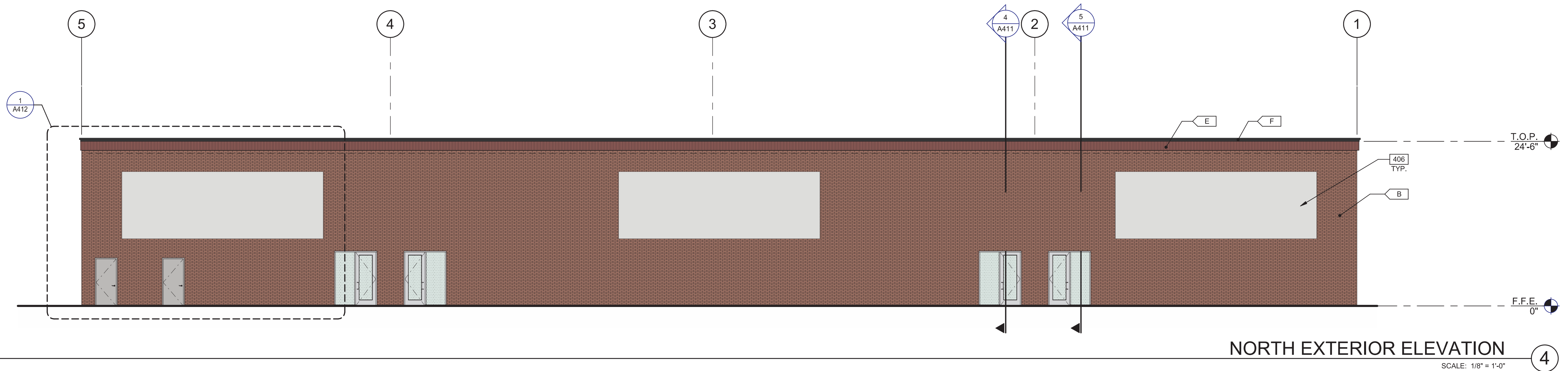
SOUTH EXTERIOR ELEVATION
 SCALE: 1/8" = 1'-0"



EAST EXTERIOR ELEVATION
 SCALE: 1/8" = 1'-0"



WEST EXTERIOR ELEVATION
 SCALE: 1/8" = 1'-0"



NORTH EXTERIOR ELEVATION
 SCALE: 1/8" = 1'-0"

LEGEND

- MATERIALS:**
- STONE VENEER
 - BRICK RUNNING BOND PATTERN
- GLASS:**
- VISION GLASS
 - TEMPERED GLASS

ALL GLASS USED ON THE ENVELOPE OF THE BUILDING TO BE:
 1" INSULATED
 U FACTOR = 0.29 AND SHCG = 0.28
 GLASS WIND LOAD RESISTANCE CALCULATIONS ARE UNDER SEPARATE PERMIT

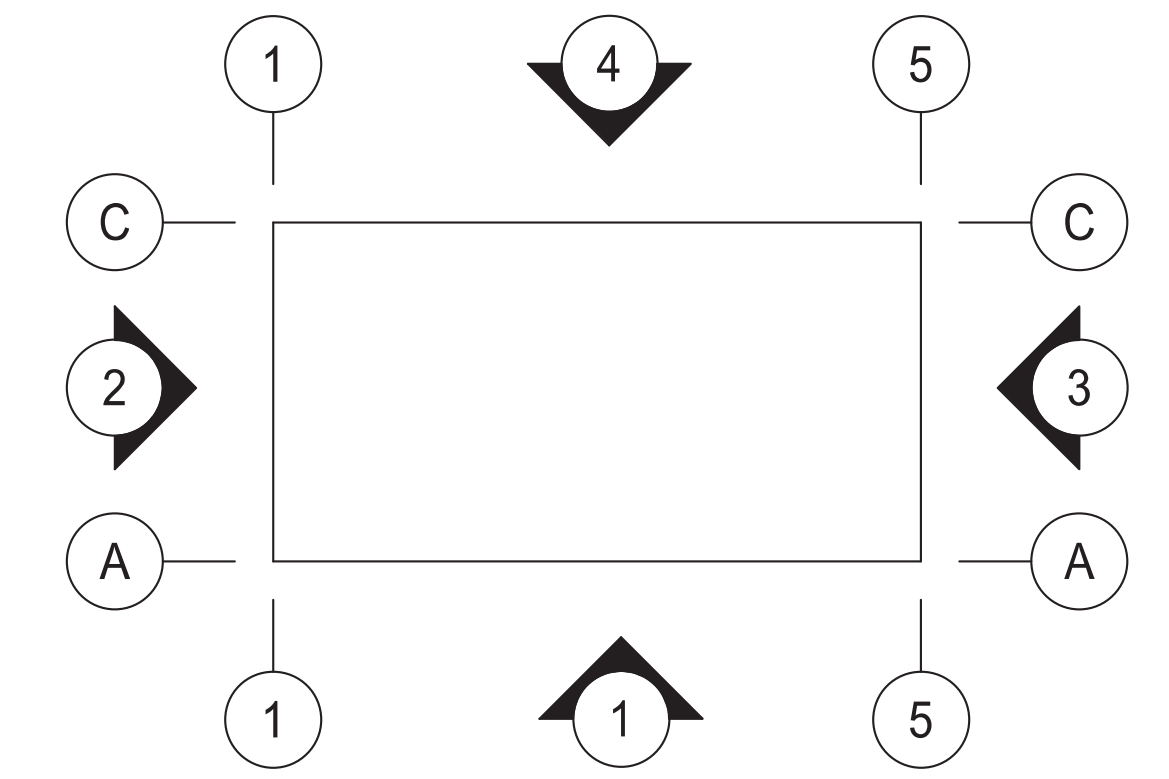
COLORS:

- A BASE COLOR: BRICK LIGHT TONE
- B BASE COLOR: BRICK MIDDLE TONE
- C BASE COLOR: BRICK DARK TONE
- D SECONDARY COLOR: GRAY STONE
- E ACCENT COLOR: SOLDIER COURSE PATTERN
- F ACCENT COLOR: BLACK PAINT
- G ACCENT COLOR: WOOD VENEER

KEYNOTES:

- 401 ALUMINUM STOREFRONT SYSTEM WITH 1" INSULATED GLASS.
- 402 METAL CANOPY, PAINTED.
- 403 FUTURE TENANT SIGNAGE, UNDER SEPARATE PERMIT.
- 404 FINISH GRADE VARIES.
- 405 LINE OF ROOF BEYOND.
- 406 PROVIDE SMOOTH EIFS FINISH FOR FUTURE MURALS.

KEY PLAN

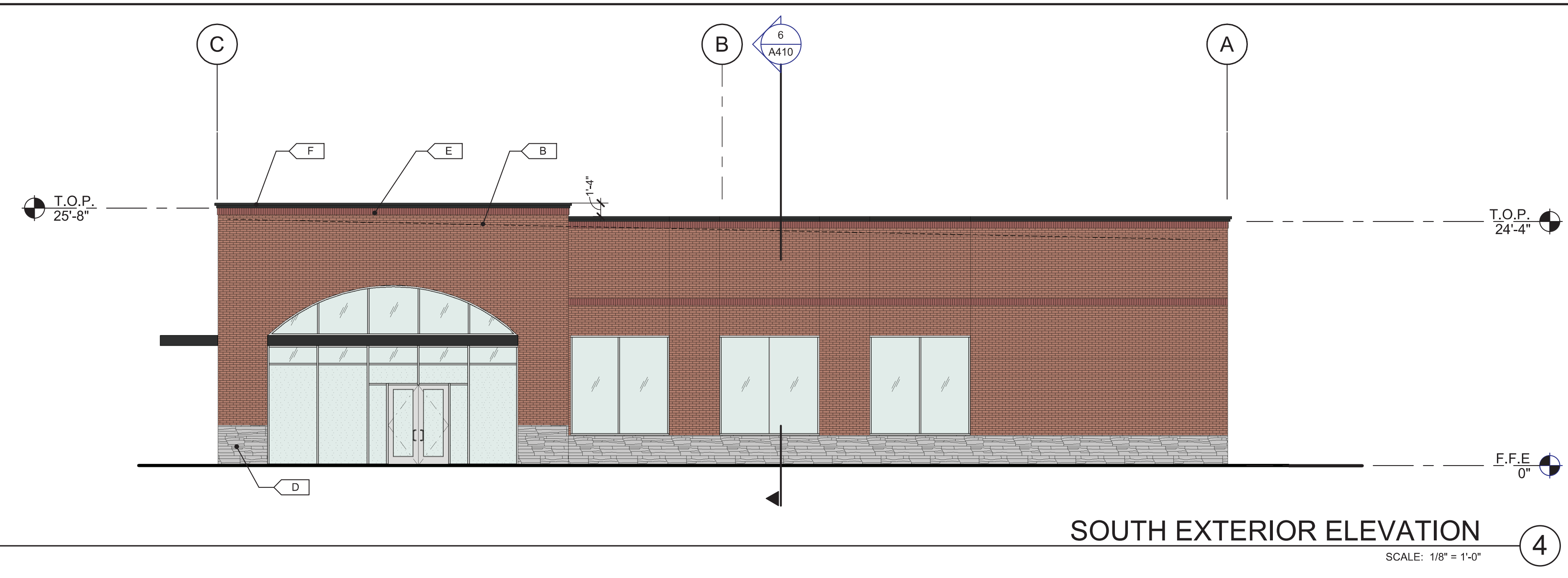
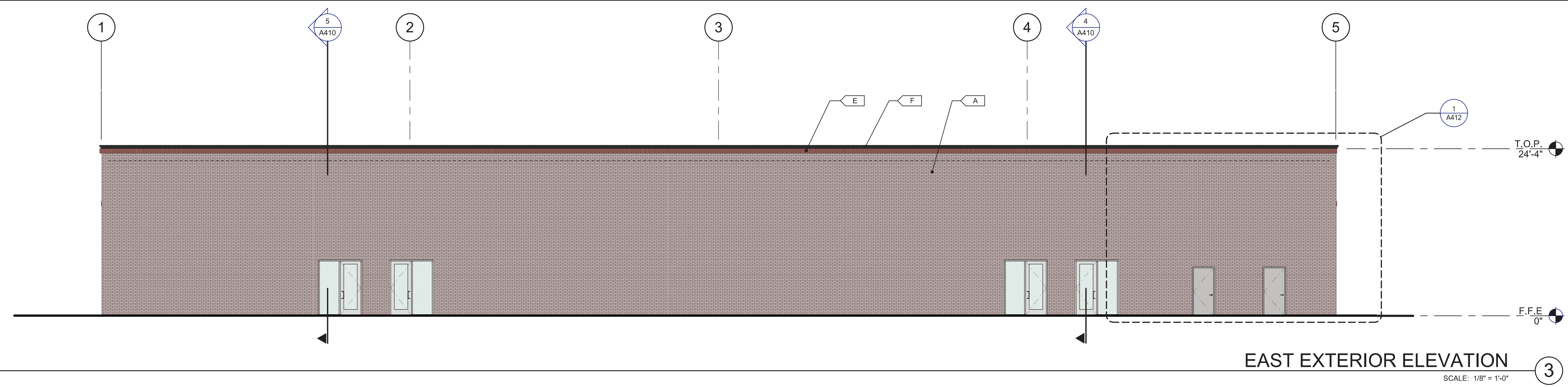
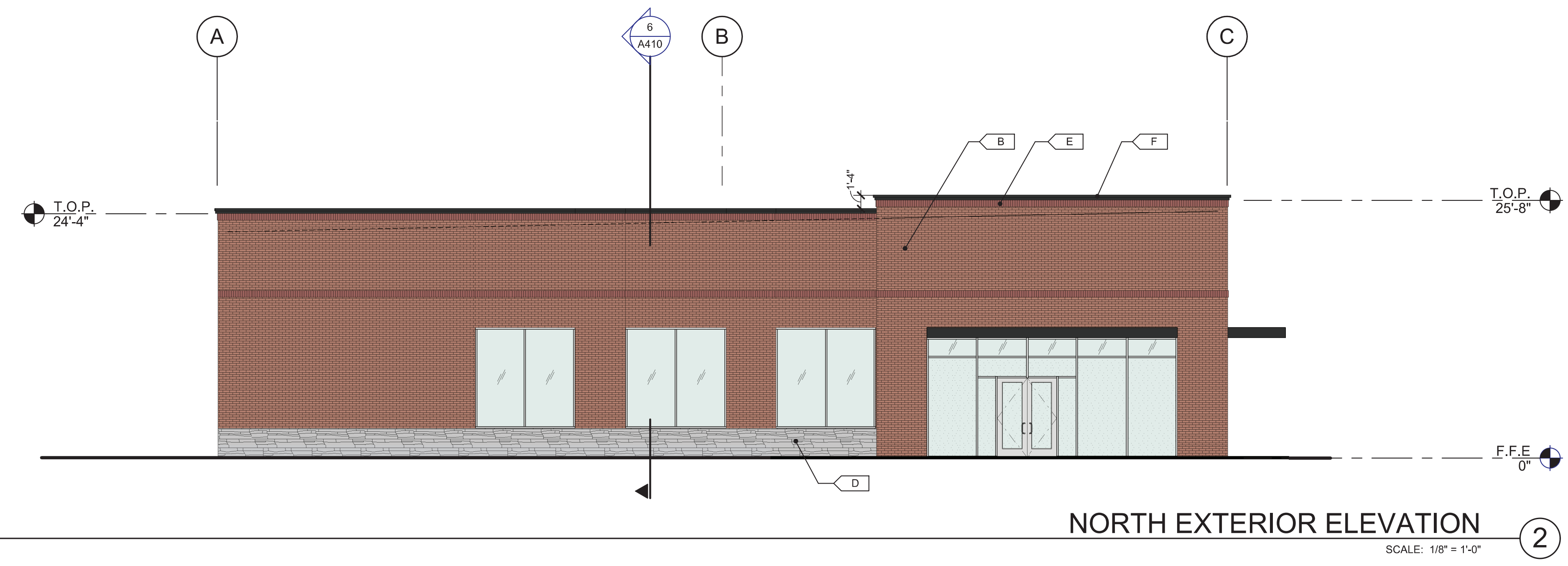


EXTERIOR ELEVATIONS

DATE	REVISIONS
01/12/2024	ISSUED FOR SPECIAL USE PERMIT & PUD SUBMITTAL

PA/PM:	N. EDWARDS
DRAWN BY:	S.R. / V.O.
JOB NO.:	CH23-0124-00

SHEET
A210



KEYNOTES:

- 401 ALUMINUM STOREFRONT SYSTEM WITH 1" INSULATED GLASS.
- 402 METAL CANOPY, PAINTED.
- 403 FUTURE TENANT SIGNAGE, UNDER SEPARATE PERMIT.
- 404 FINISH GRADE VARIES.
- 405 LINE OF ROOF BEYOND.

LEGEND

MATERIALS:

- STONE VENEER
- BRICK RUNNING BOND PATTERN

GLASS:

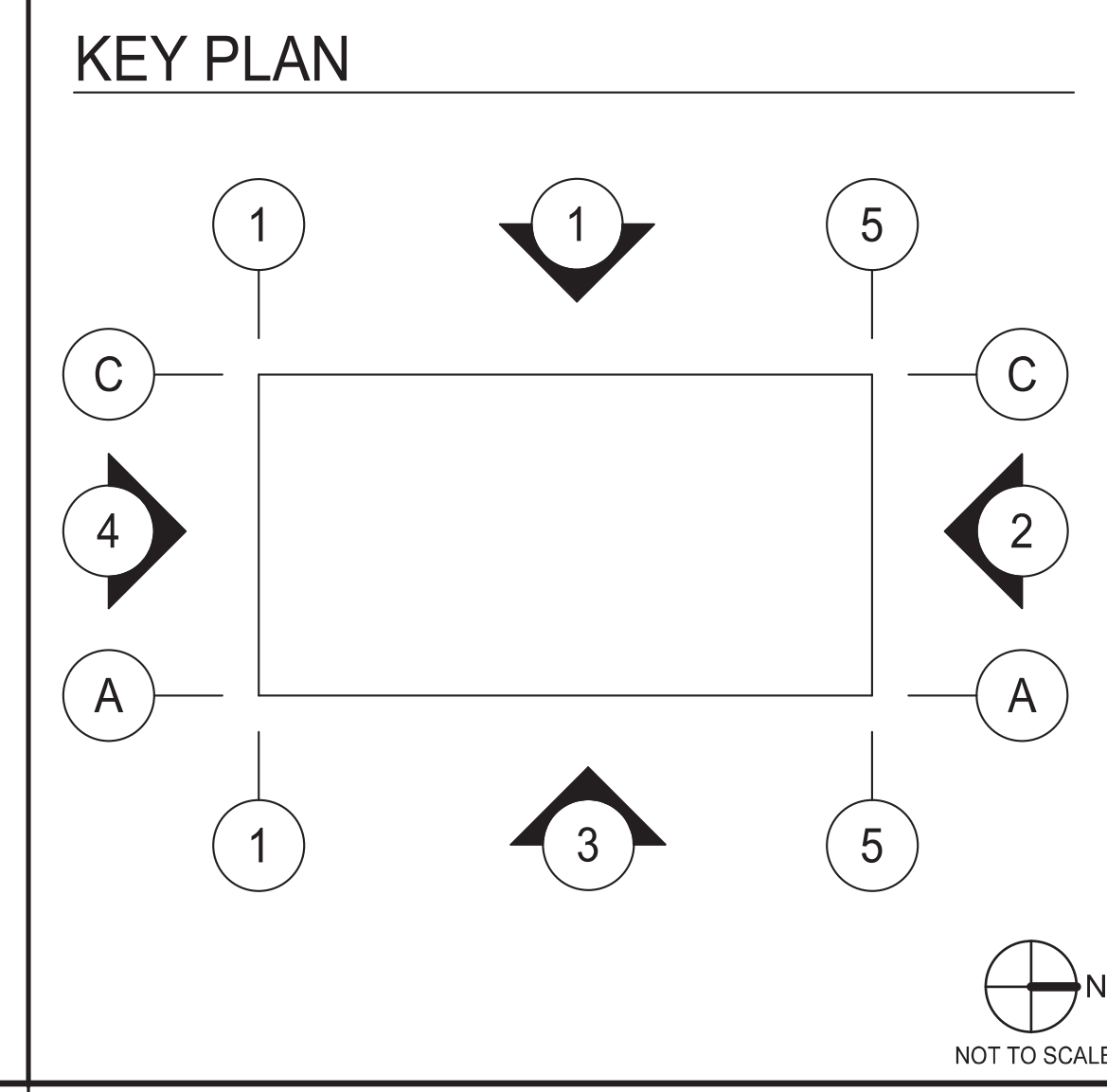
- TEMPERED GLASS
- VISION GLASS

ALL GLASS USED ON THE ENVELOPE OF THE BUILDING TO BE:
1" INSULATED
U FACTOR = 0.28 AND SHGC = 0.28
GLASS WIND LOAD RESISTANCE CALCULATIONS ARE UNDER SEPARATE PERMIT

COLORS:

PROVIDE 6'-0" WIDE PAINT COLOR MOCK-UP FULL HEIGHT OF BUILDING FOR OWNER/ARCHITECT REVIEW.

- A BASE COLOR: BRICK LIGHT TONE
- B BASE COLOR: BRICK MIDDLE TONE
- C BASE COLOR: BRICK DARK TONE
- D SECONDARY COLOR: GRAY STONE
- E ACCENT COLOR: SOLDIER COURSE PATTERN
- F ACCENT COLOR: BLACK PAINT



WARE MALCOMB
ARCHITECTURE
CIVIL ENGINEERING
PLANNING
BRANDING
INTERIORS
1312 E. 25th St. #410
Oak Brook, IL 60521
P: 630.218.0953
F: 630.218.0953
State of Illinois Design Firm Registration No. 04-004069

FOX HAVEN SQUARE - BLDG 2
N. KIRK RD.
ST. CHARLES, ILLINOIS 60174

EXTERIOR ELEVATIONS

DATE	REVISIONS
01-12-2024	ISSUED FOR SPECIAL USE PERMIT & PUD SUBMITTAL

PA/PM: N. EDWARDS
DRAWN BY: S.R. / V.O.
JOB NO.: CH23-0124-00

SHEET
A210

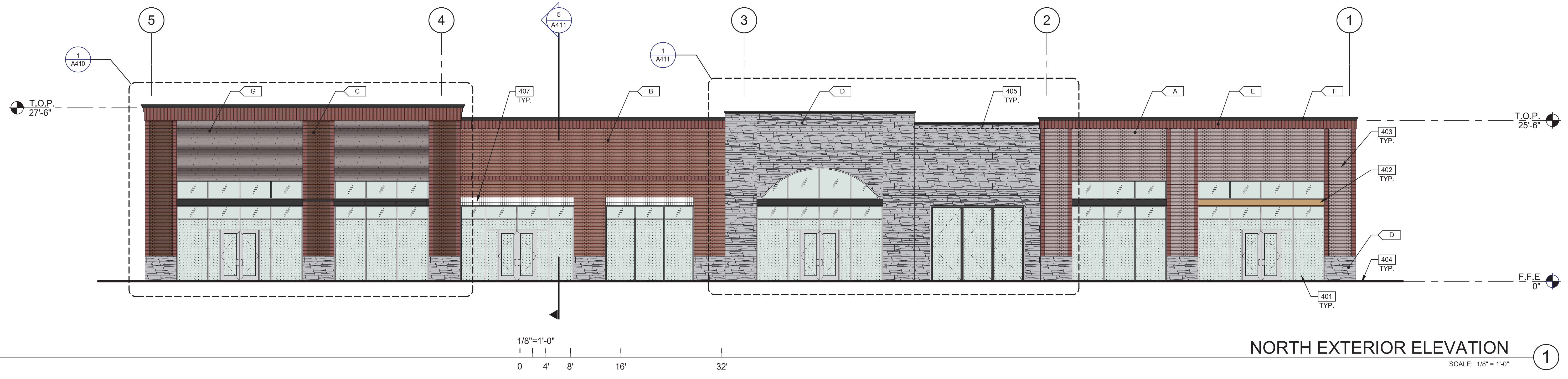
WARE MALCOMB
 CIVIL ENGINEERING
 ARCHITECTURE
 PLANNING
 BRANDING
 BUILDING MEASUREMENT
 INTERIORS
 1316 25th St. #410
 Oak Brook, IL 60521
 P: 630.218.0963
 F: 630.218.0963
 State of Illinois Design Firm Registration No. 04-00-0069

FOX HAVEN SQUARE - BLDG 3
 N. KIRK RD.
 ST. CHARLES, ILLINOIS 60174

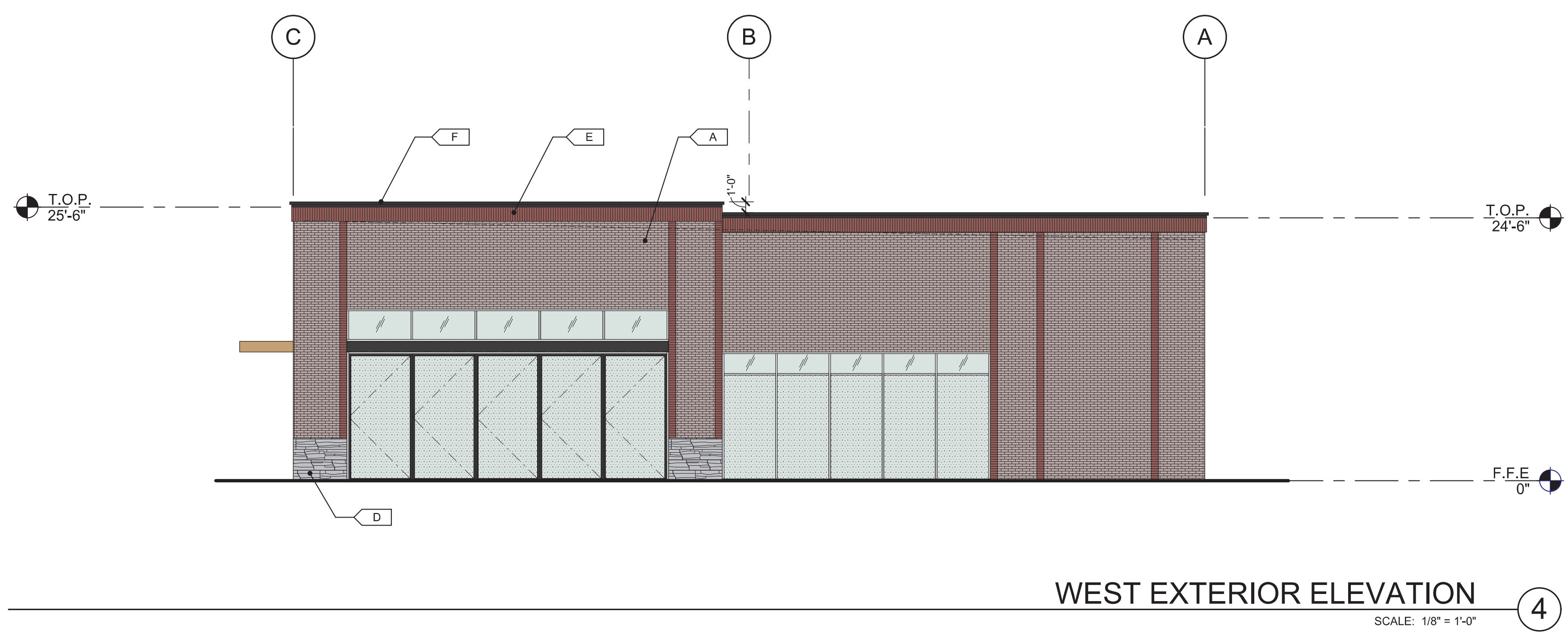
EXTERIOR ELEVATIONS	
DATE	REMARKS
01/12/2024	ISSUED FOR SPECIAL USE PERMIT & PLD SUBMITTAL

PA/PM: N. EDWARDS
 DRAWN BY: S.R. / V.O.
 JOB NO.: CH23-0124-00

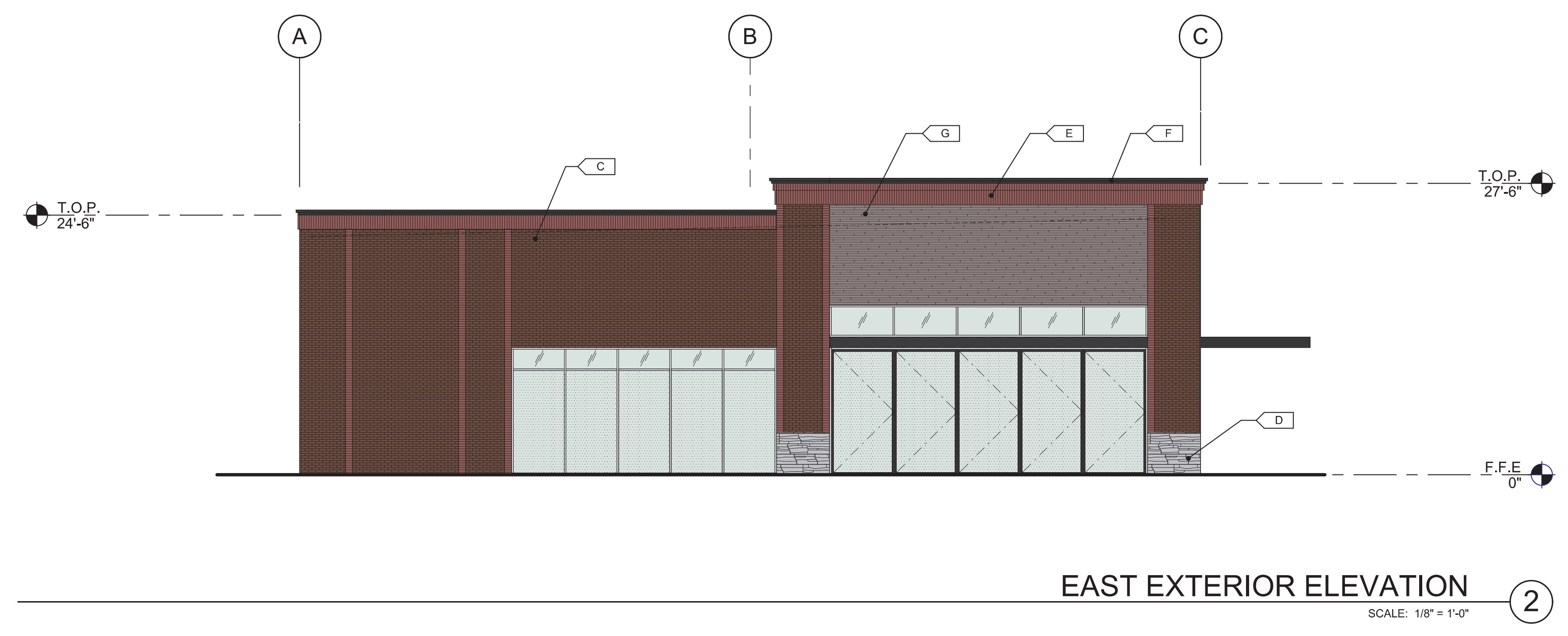
SHEET
A210



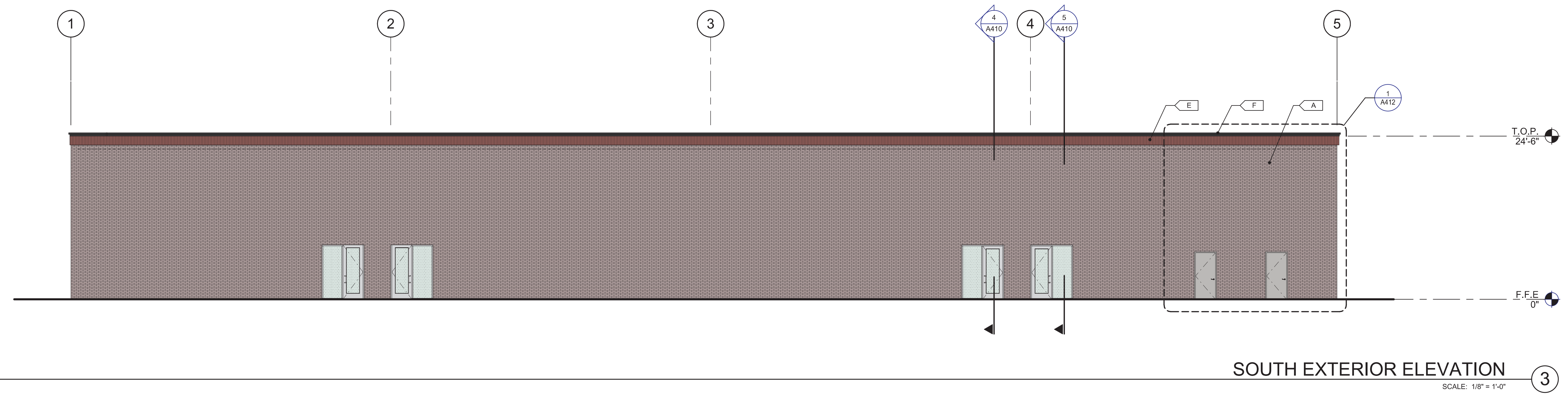
NORTH EXTERIOR ELEVATION
 SCALE: 1/8" = 1'-0"



WEST EXTERIOR ELEVATION
 SCALE: 1/8" = 1'-0"



EAST EXTERIOR ELEVATION
 SCALE: 1/8" = 1'-0"



SOUTH EXTERIOR ELEVATION
 SCALE: 1/8" = 1'-0"

LEGEND

- MATERIALS:**
- STONE VENEER
 - BRICK RUNNING BOND PATTERN
- GLASS:**
- TEMPERED GLASS
- ALL GLASS USED ON THE ENVELOPE OF THE BUILDING TO BE:
 1" INSULATED
 U FACTOR = 0.28 AND SHGC = 0.28
 GLASS WIND LOAD RESISTANCE CALCULATIONS ARE UNDER SEPARATE PERMIT

- COLORS:**
- PROVIDE 6'-0" WIDE PAINT COLOR MOCK-UP FULL HEIGHT OF BUILDING FOR OWNER/ARCHITECT REVIEW.
 - A: BASE COLOR: BRICK LIGHT TONE
 - B: BASE COLOR: BRICK MIDDLE TONE
 - C: BASE COLOR: BRICK DARK TONE
 - D: SECONDARY COLOR: GRAY STONE
 - E: ACCENT COLOR: SOLDIER COURSE PATTERN
 - F: ACCENT COLOR: BLACK PAINT
 - G: ACCENT COLOR: WOOD VENEER

KEYNOTES:

- 401 ALUMINUM STOREFRONT SYSTEM WITH 1" INSULATED GLASS.
- 402 METAL CANOPY, PAINTED.
- 403 FUTURE TENANT SIGNAGE, UNDER SEPARATE PERMIT.
- 404 FINISH GRADE VARIES.
- 405 LINE OF ROOF BEYOND.
- 407 COMMERCIAL FABRIC AWNING.

KEY PLAN

