



**HAEGER ENGINEERING**  
 CONSULTING ENGINEERS • LAND SURVEYORS  
 100 East State Parkway, Schaumburg, IL 60197 • Tel: 815.291.6600 Fax: 815.291.6008  
 Illinois Professional Design Firm License No. 184-000152  
 www.haegerengineering.com

**GEOMETRY & PAVING PLAN**  
**LOTS 7 - 12 IN THE OAKS OF ST CHARLES**  
 ST CHARLES, ILLINOIS

Project Manager: M.L.A.  
 Engineer: M.L.A.  
 Date: 02.16.2024  
 Project No. 24-007  
 Sheet **C3.0**



### PROPOSED PLANT SCHEDULE

SYMBOL	KEY	COMMON/LATIN NAME	SIZE	CONDITION*	SPACING	QUANTITY
<b>SHADE TREES</b> [NOTE: ALL PLANT MATERIAL TO BE SELECTED FROM THIS LIST]						
AL	REDMOND AMERICAN LINDEN	TILIA AMERICANA	25" CAL.	B & B	SPECIMEN	0
DC	SHINING BRAKE BALL CYPRESS	TAXODIUM DISTICHUM	25" CAL.	B & B	SPECIMEN	0
GP	PRINCETON BENTLEY GINKGO	GINKGO BILBOA	25" CAL.	B & B	SPECIMEN	0
HL	BOUYLINE HONEYLOCUST	GLIEDIA TRICANTHOS VAR. NERIAS	25" CAL.	B & B	SPECIMEN	0
KC	KENTUCKY COFFEE TREE	STYMPHOLOPS ODORATA	25" CAL.	B & B	SPECIMEN	0
<b>ORNAMENTAL TREES</b>						
ER	EASTERN REDBUD	CERCIS CANADENSIS	6" HT.	B & B	SPECIMEN	0
FC	RED JEWEL FLOWERING CRABAPPLE	MALUS SPECIES	6" HT.	B & B	SPECIMEN	0
RB	RIVER BIRCH	BETULA NIGRA	6" HT.	B & B	SPECIMEN	0
SB	ALLEGHENY SERVICEBERRY	AMELANCHIER LEWIS	6" HT.	B & B	SPECIMEN	0
<b>EVERGREEN SHRUBS</b>						
DY	DENSE YEW	TAXUS MEDIA DENIFORMIS	24"	B & B	3.0 C.	0
EA	EMERALD GREEN ARBORVITAE	THUJA OCCIDENTALIS (BARBAD)	9" HT.	B & B	4.5" O.C.	0
KJ	KALLAY JUNIPER	JUNIPERUS CHINENSIS VAR. KALLAY'S COMPACT	24"	B & B	3.0 C.	0
<b>DECIDUOUS SHRUBS</b>						
AC	DWARF ALPINE CURRANT	RIBES ALPINA GREEN MOUND	24"	B & B	3.0 C.	0
AV	ARROWWOOD VIBURNUM	VIBURNUM DENTATUM CHICAGO LUSTRE	36"	B & B	4.5" O.C.	0
CI	ROCKY MOUNTAIN CHERRYBERRY	ARONIA MELANOCARPA MORTON	24"	B & B	3.0 C.	0
DK	KODIAK RED DIERVILLA	DIERSHIA COMPACTA	24"	B & B	3.0 C.	0
GS	GRASS-LOW SUMAC	Rhus AROMATICA	24"	B & B	3.0 C.	0
LH	LIME LIGHT HYDRANGEA	HYDRANGEA PANDICOLA	36"	B & B	4.5" O.C.	0
ML	MESSE KIM LILAC	SYRINA PATULA	24"	B & B	3.0 C.	0
SG	GOULDEN SPIREA	SPIREA X BURBALDIA	24"	B & B	3.0 C.	0
<b>GROUNDCOVERS AND PERENNIALS</b>						
IC	PURPLE LEAF WINTERGERANIUM	EUONYMUS FORTUNEI VAR. COLORATUS	01	CONTR.	1.0 C.	0
KG	KARL FOERSTER FEATHER REED GRASS	CLANADOIDEA ACUTIFLOA	3G	CONTR.	3.0 C.	0
PM1	PERENNIAL MIX #1	STELLA DE ORO DAYLILY / HELIOPSIS SCOPULORUM 60% / PULMONARIA SACCOBOLUS 40%	1G	CONTR.	1.5" O.C.	0
PM2	PERENNIAL MIX #2	AUTUMN MOOR GRASS / BEULARIA AUTUMNALIS 60% / KOT KAI CANTARY / NERITA FARGESII 40%	1G	CONTR.	1.5" O.C.	0
PM3	PERENNIAL MIX #3	DWARF PRAIRIE DROPSIDE / SPOROBOLUS HETEROLEPIS 70% / KODIAK FEATHERS / LUXURIA SPECIOSA 40%	1G	CONTR.	2.0 C.	0
RO	ROZANNE GERANIUM	GERANIUM GERANI	1G	CONTR.	2.0 C.	0
SOD	SOD (BLUEGRASS VARIETY)		S.Y.			0

\*IF B & B PLANTS ARE NOT AVAILABLE DUE TO TIME OF SEASON, CONTAINER PLANTS MAY BE SUBSTITUTED AS APPROVED BY THE LANDSCAPE ARCHITECT.

### LANDSCAPE PLAN NOTES

- ALL PROPOSED SHRUB BEDS AND TREE RINGS TO RECEIVE 3" THICK SHREDDED HARDWOOD MULCH (PERENNIAL BEDS UNLESS OTHERWISE NOTED).
- REPAIR ALL EXISTING TURF AREAS DISTURBED DURING CONSTRUCTION (SOD).
- LIMIT OF SOD = PROPERTY LINE UNLESS OTHERWISE NOTED.
- THE CONTRACTOR SHALL LOCATE THE EXISTENCE OF UTILITIES PRIOR TO STARTING WORK.
- THE CONTRACTOR SHALL SUPPLY ALL PLANT MATERIALS IN QUANTITIES SUFFICIENT TO COMPLETE THE PLANTING SHOWN ON THE DRAWINGS. PLANT MATERIAL QUANTITIES SHOWN ON PLAN TAKE PRECEDENCE TO THOSE OF THE PLANT LIST.
- ALL PLANT MATERIALS SHALL CONFORM TO THE GUIDELINES ESTABLISHED BY THE CURRENT AMERICAN STANDARDS FOR NURSERY STOCK, PUBLISHED BY THE AMERICAN ASSOCIATION OF NURSERYMEN OR EQUIVALENT. NO "RAIN GRADE" MATERIAL SHALL BE ACCEPTED.
- ALL PLANT MATERIAL SHALL BEAT THE SAME RELATIONSHIP TO FINISHED GRADE AS THE PLANT'S ORIGINAL GRADE BEFORE DIGGING.
- ALL PLANTS SHALL BE BALLED AND WRAPPED OR CONTAINER GROWN AS SPECIFIED. NO CONTAINER GROWN STOCK SHALL BE ACCEPTED IF IT IS ROOT BOUND. ALL WRAPPING MATERIAL MADE OF SYNTHETIC TIES OR PLASTICS SHALL BE REMOVED AT THE TIME OF PLANTING.
- ALL PLANTINGS SHALL BE WATERED DURING THE FIRST 24 HOUR PERIOD AFTER PLANTING. WATER THROUGHOUT TO ENSURE ALL AIR POCKETS ARE REMOVED AROUND ROOT BALL.
- CONTRACTOR IS RESPONSIBLE FOR WATERING SOD UNTIL TIME OF FINISHING.
- IMPORTED TOPSOIL AND SPREADING BY EXCAVATING CONTRACTOR.
- ALL PROPOSED TREES OUTSIDE PLANTING BED AREAS SHALL RECEIVE 6" DIA. MULCH RING AROUND TRUNK.
- ALL PLANTS AND STAKES SHALL BE SET PLUMB, UNLESS OTHERWISE NOTED. IT IS THE CONTRACTOR'S OBLIGATION TO STAKE, BUT HIS RESPONSIBILITY TO ASSURE PLANTS REMAIN PLUMB UNTIL END OF GUARANTEE PERIOD. IF STAKING OF TREES IS NOT PERFORMED, REMOVAL OF TOP 12" OF BULFUP AND HOLES IS UNNECESSARY REMOVE ALL NON-BIODEGRADABLE MATERIAL.
- INFORMATION CONTAINED IN "PLAN NOTES" TAKES PRECEDENCE OVER INFORMATION IN DETAILS.
- VERIFY SITE CONDITIONS AND INFORMATION ON DRAWINGS. PROMPTLY REPORT ANY DISCREPANCIES AND/OR CHANGES FROM THE INFORMATION SHOWN ON THE PLAN. THE OWNER IS NOT RESPONSIBLE FOR UNAUTHORIZED CHANGES OR EXTRA WORK REQUIRED TO CORRECT UNAUTHORIZED DISCREPANCIES.
- ALL PLANTING BED EDGES TO BE CULTIVATED.
- AMEND ALL GROUNDCOVER BEDS WITH 3" THICK SAND AND COMPOST MIX PRIOR TO PLANTING. MIX INTO THE EXIST. TOPSOIL TO A 12" DEPTH.
- PAVINGWAY TREES UNLESS TO BE NO LOWER THAN 4' ABOVE GRADE.



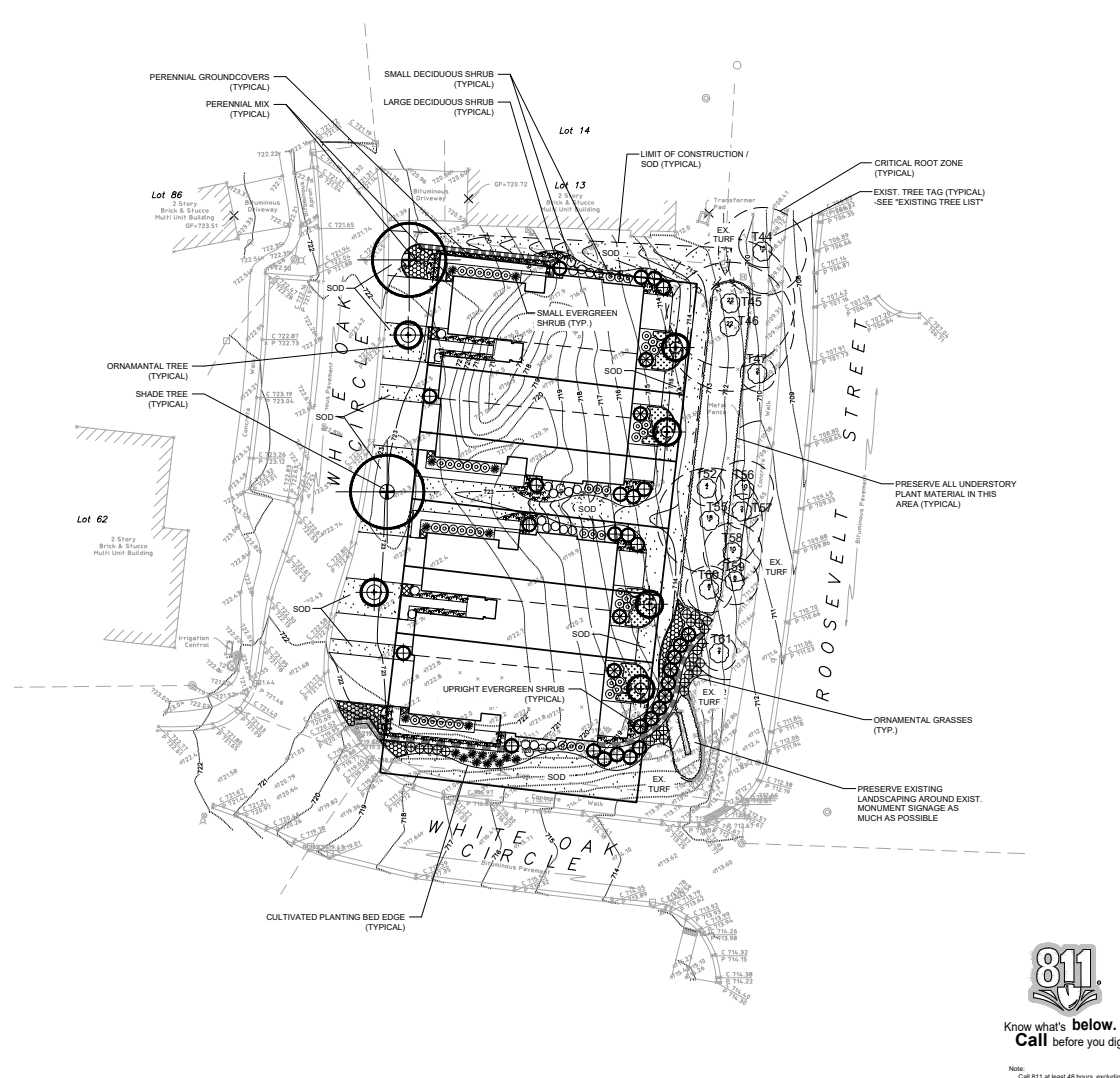
Know what's below. Call before you dig.

Note: Call 811 at least 48 hours, excluding weekends and holidays, before you dig.



**J. DAVITO DESIGN, INC.**  
LANDSCAPE ARCHITECTURAL DESIGN  
7735 KINGSTON DRIVE  
ISLAND LAKE, IL 60042  
(847) 469-8797  
WWW.JDAVITODESIGN.COM

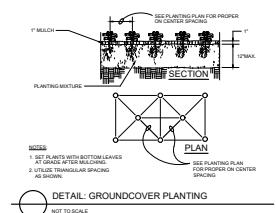
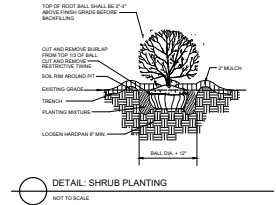
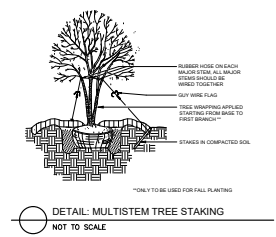
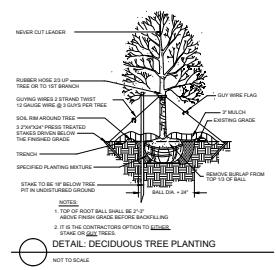
Project Manager: M.L.A.  
Engineer: M.L.A.  
Date: 02.05.2024  
Project No. 24-007  
Sheet **L1.0** of 12



### LANDSCAPE DATA

PROPOSED SITE AREA	15,864 S.F.
PROPOSED LANDSCAPE AREA	5,240 S.F. (33%)
REQUIRED LANDSCAPE AREA	2,350 S.F. (15%)

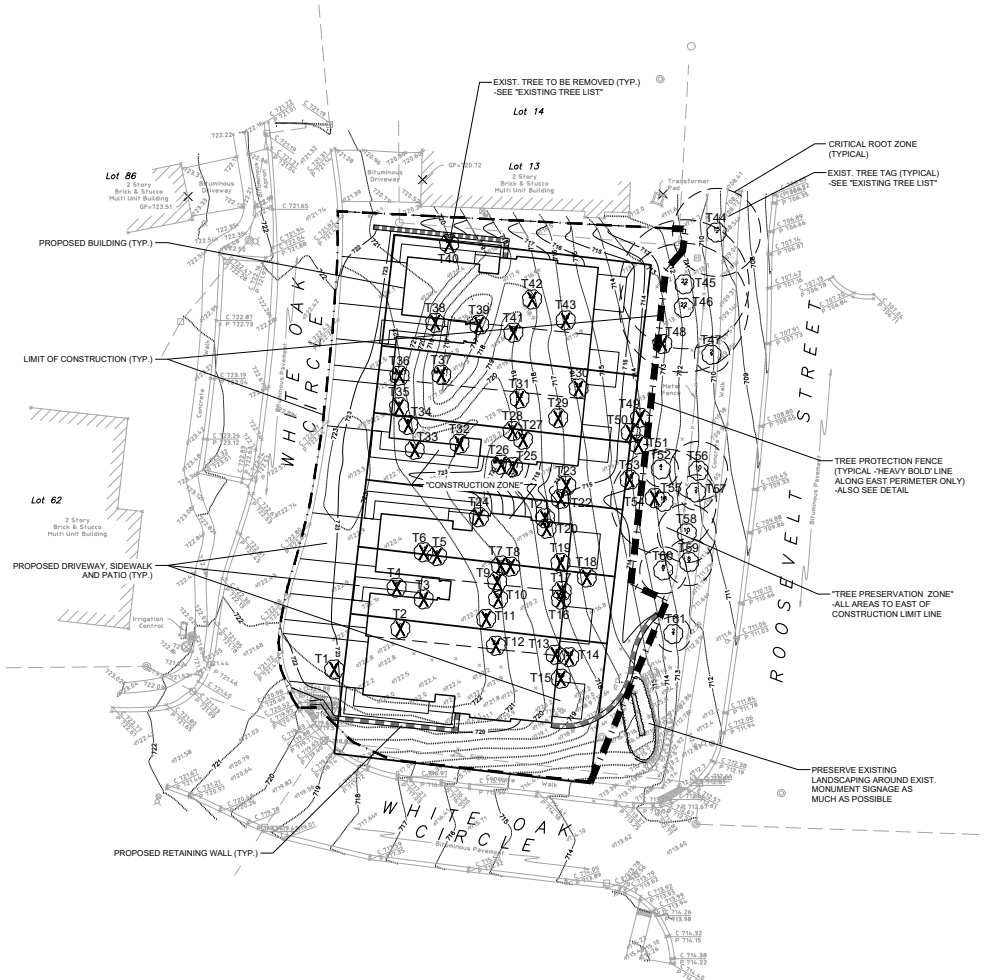
NOTE: FOR "EXISTING TREE LIST" SEE "TREE SURVEY & PRESERVATION PLAN", SHEET L2.0



# EXISTING TREE LIST

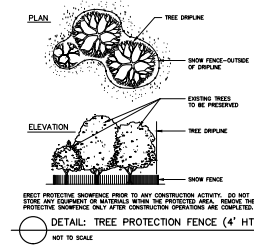
TREE #	COMMON NAME	BOTANICAL NAME	SIZE (DBH/INCHES)	PRESERVATION METHOD
1	PEAR	PYRUS SPECIES	14	REMOVE - CONSTRUCTION CONFLICT
2	ELM	ULMUS SPECIES	9	REMOVE - CONSTRUCTION CONFLICT
3	ELM	ULMUS SPECIES	13	REMOVE - CONSTRUCTION CONFLICT
4	ELM	ULMUS SPECIES	6	REMOVE - CONSTRUCTION CONFLICT
5	COMMON HACKBERRY	CELTIS OCCIDENTALIS	6	REMOVE - CONSTRUCTION CONFLICT
6	ELM	ULMUS SPECIES	12	REMOVE - CONSTRUCTION CONFLICT
7	WHITE OAK	QUERCUS ALBA	22	REMOVE - CONSTRUCTION CONFLICT
8	COMMON HACKBERRY	CELTIS OCCIDENTALIS	9	REMOVE - CONSTRUCTION CONFLICT
9	COMMON HACKBERRY	CELTIS OCCIDENTALIS	8	REMOVE - CONSTRUCTION CONFLICT
10	BLACK WALNUT	JUGLANS NGRA	21	REMOVE - CONSTRUCTION CONFLICT
11	BLACK WALNUT	JUGLANS NGRA	8	REMOVE - CONSTRUCTION CONFLICT
12	MALBERRY	MORUS SPECIES	24	REMOVE - CONSTRUCTION CONFLICT
13	BOWELDER	ACER NEGUNDO	18	REMOVE - CONSTRUCTION CONFLICT
14	ELM	ULMUS SPECIES	20	REMOVE - CONSTRUCTION CONFLICT
15	BOWELDER	ACER NEGUNDO	30	REMOVE - CONSTRUCTION CONFLICT
16	WHITE OAK	QUERCUS ALBA	18	REMOVE - CONSTRUCTION CONFLICT
17	COMMON HACKBERRY	CELTIS OCCIDENTALIS	9	REMOVE - CONSTRUCTION CONFLICT
18	COMMON HACKBERRY	CELTIS OCCIDENTALIS	14	REMOVE - CONSTRUCTION CONFLICT
19	BLACK WALNUT	JUGLANS NGRA	18	REMOVE - CONSTRUCTION CONFLICT
20	BUR OAK	QUERCUS MACROCARPA	11	REMOVE - CONSTRUCTION CONFLICT
21	BLACK CHERRY	PRUNUS SEROTINA	8	REMOVE - CONSTRUCTION CONFLICT
22	BOWELDER	ACER NEGUNDO	18	REMOVE - CONSTRUCTION CONFLICT
23	BLACK CHERRY	PRUNUS SEROTINA	13	REMOVE - CONSTRUCTION CONFLICT
24	BLACK CHERRY	PRUNUS SEROTINA	9	REMOVE - CONSTRUCTION CONFLICT
25	NORTHERN RED OAK	QUERCUS RUBRA	7	REMOVE - CONSTRUCTION CONFLICT
26	NORTHERN RED OAK	QUERCUS RUBRA	14	REMOVE - CONSTRUCTION CONFLICT
27	COMMON HACKBERRY	CELTIS OCCIDENTALIS	7	REMOVE - CONSTRUCTION CONFLICT
28	COMMON HACKBERRY	CELTIS OCCIDENTALIS	8	REMOVE - CONSTRUCTION CONFLICT
29	BOWELDER	ACER NEGUNDO	13	REMOVE - CONSTRUCTION CONFLICT
30	BOWELDER	ACER NEGUNDO	20	REMOVE - DEAD
31	COMMON HACKBERRY	CELTIS OCCIDENTALIS	22	REMOVE - CONSTRUCTION CONFLICT
32	BLACK WALNUT	JUGLANS NGRA	20	REMOVE - CONSTRUCTION CONFLICT
33	MALBERRY	MORUS SPECIES	11	REMOVE - CONSTRUCTION CONFLICT
34	MALBERRY	MORUS SPECIES	8	REMOVE - CONSTRUCTION CONFLICT
35	MALBERRY	MORUS SPECIES	6	REMOVE - CONSTRUCTION CONFLICT
36	MALBERRY	MORUS SPECIES	MULTI 8	REMOVE - CONSTRUCTION CONFLICT
37	BOWELDER	ACER NEGUNDO	MULTI 8, 19	REMOVE - CONSTRUCTION CONFLICT
38	MALBERRY	MORUS SPECIES	9	REMOVE - CONSTRUCTION CONFLICT
39	COMMON HACKBERRY	CELTIS OCCIDENTALIS	7	REMOVE - CONSTRUCTION CONFLICT
40	BOWELDER	ACER NEGUNDO	24	REMOVE - CONSTRUCTION CONFLICT
41	BLACK WALNUT	JUGLANS NGRA	25	REMOVE - CONSTRUCTION CONFLICT
42	COMMON HACKBERRY	CELTIS OCCIDENTALIS	24	REMOVE - CONSTRUCTION CONFLICT
43	BLACK WALNUT	JUGLANS NGRA	10	REMOVE - CONSTRUCTION CONFLICT
44	MALBERRY	MORUS SPECIES	15	PRESERVE
45	BLACK WALNUT	JUGLANS NGRA	22	PRESERVE
46	COMMON HACKBERRY	CELTIS OCCIDENTALIS	22	PRESERVE
47	THORNLESS HONEYSUCKER	LIGULASTRA TRICANTHOS VAR. NERMS	2	PRESERVE
48	BLACK WALNUT	JUGLANS NGRA	24	REMOVE - CONSTRUCTION CONFLICT
49	COMMON HACKBERRY	CELTIS OCCIDENTALIS	10	REMOVE - CONSTRUCTION CONFLICT
50	COMMON HACKBERRY	CELTIS OCCIDENTALIS	12	REMOVE - CONSTRUCTION CONFLICT
51	COMMON HACKBERRY	CELTIS OCCIDENTALIS	8	REMOVE - CONSTRUCTION CONFLICT
52	ELM	ULMUS SPECIES	4	REMOVE - CONSTRUCTION CONFLICT
53	BLACK CHERRY	PRUNUS SEROTINA	10	REMOVE - DEAD
54	BOWELDER	ACER NEGUNDO	10	REMOVE - 1/2 DEAD
55	BLACK WALNUT	JUGLANS NGRA	18	PRESERVE
56	COMMON HACKBERRY	CELTIS OCCIDENTALIS	10	PRESERVE
57	NORTHERN CATALPA	CATALPA SPECIOSA	2	PRESERVE
58	COMMON HACKBERRY	CELTIS OCCIDENTALIS	10	PRESERVE
59	COMMON HACKBERRY	CELTIS OCCIDENTALIS	8	PRESERVE
60	BUR OAK	QUERCUS MACROCARPA	8	PRESERVE
61	RED MAPLE	ACER RUBRUM	2	PRESERVE

Tree Survey Performed by J. Davito 2022/4



## TREE PRESERVATION NOTES

- TREE PRESERVATION PLAN NOTES
  - ALL GRADING AND CONSTRUCTION EQUIPMENT SHALL BE FORBIDDEN FROM ENCRoACHING WITHIN THE ROOT ZONE OF A TREE TO BE PRESERVED. NO EXCESS SOIL, ADDITIONAL FILL, LOGS OR CONSTRUCTION DEBRIS SHALL BE PLACED WITHIN THE ROOT ZONE OF ANY TREE THAT IS REQUIRED TO BE PRESERVED.
  - CRUSHED LIMESTONE HYDROCARBONS AND OTHER MATERIALS DETRIMENTAL TO TREES SHALL NOT BE DUMPED WITHIN THE ROOT ZONE OF ANY TREE NOR AT ANY HIGHER LOCATION WHERE DRAINAGE TOWARD THE TREE COULD CONCEIVABLY EFFECT THE HEALTH OF THE TREE.
  - APPROPRIATE FENCING (SEE DETAIL) SHALL TEMPORARILY BE INSTALLED AT THE PERIPHERY OF THE ROOT ZONE OF TREES AND PLANT MATERIAL EXCAVATED FOR PRESERVATION AS INDICATED ON THE PLAN. IN AREAS OF WHERE PLANTINGS ARE ADJACENT TO EX-CORING THAT IS TO REMAIN, INSTALL FENCING ALONG TO BACK OF CURB AS POSSIBLE.
  - ALL REQUIRED FENCING SHALL BE IN PLACE PRIOR TO CONSTRUCTION ACTIVITY. THE FENCING SHALL REMAIN IN PLACE DURING THE ENTIRE CONSTRUCTION PERIOD. ALL FENCING MUST BE SECURED TO ITS HORIZONTAL PROFILES INTO THE GROUND AND BRACED NO FURTHER THAN 7' APART, OR CLOSER AS NECESSARY. NOTE IF SILT FENCE IS NOT LOCATED AT PROPERTY LINE, EXISTING FENCING OFF SITE TO ADJACENT CURB IN ORDER TO PROTECT ALL LANDSCAPE AREAS BELOW THE TREE'S CRITICAL ROOT ZONE.
  - NO ATTACHMENTS, FENCES OR WIRES, OTHER THAN APPROVED MATERIALS FOR BRACING, OUTING OR WRAPPING SHALL BE ATTACHED TO ANY VEGETATION DURING THE CONSTRUCTION PERIOD.
  - URING CONSTRUCTION, ALL REASONABLE STEPS NECESSARY TO PREVENT THE DESTRUCTION OR DAMAGE OF TREES (OTHER THAN THOSE SPECIFIC TO BE REMOVED) SHALL BE TAKEN.
  - NO SOIL IS TO BE REMOVED FROM WITHIN THE ROOT ZONE OF ANY TREE THAT IS TO REMAIN.
  - TREE PROTECTION FENCE TO BE EXTRUDED POLYETHYLENE. COLOR TO BE BRIGHT SAFETY ORANGE.
  - IN AREAS OF GRADING ACTIVITY (EXCAVATION ONLY), WHERE CRITICAL ROOT ZONES OF OFF SITE TREES CROSS THE PROPERTY LINE, A 4" DEEP TRENCH SHOULD BE EXCAVATED PARALLEL TO THE PROPERTY LINE TO HELP CLEANLY CUT THE ROOTS.



DETAIL: TREE PROTECTION FENCE (4' HT.) NOT TO SCALE



**J. DAVITO DESIGN, INC.**  
LANDSCAPE ARCHITECTURAL DESIGN  
2725 KNOXSTON DRIVE  
ISLAND LAKE, IL 60042  
(847) 468-8797  
WWW.DAVITODESIGN.COM



Scale 1" = 20'

Revision

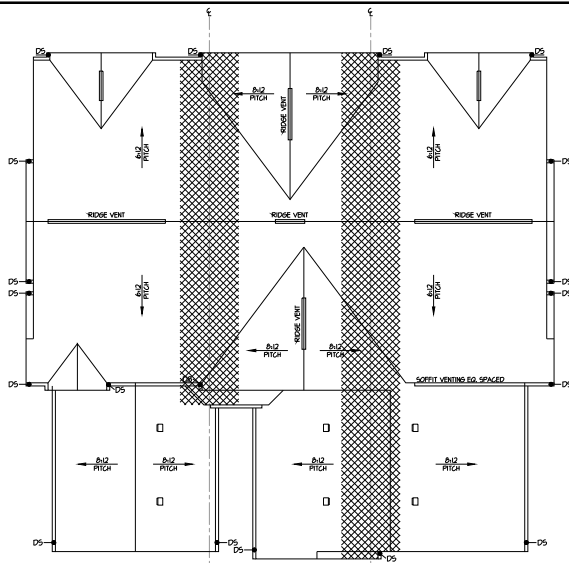
Date

No.

**HAFGER ENGINEERING**  
CONSULTANTS  
100 East Park Ave., Schaumburg, IL 60196 • Tel. 815.391.6600 Fax. 815.391.6005  
www.hafgerengineering.com

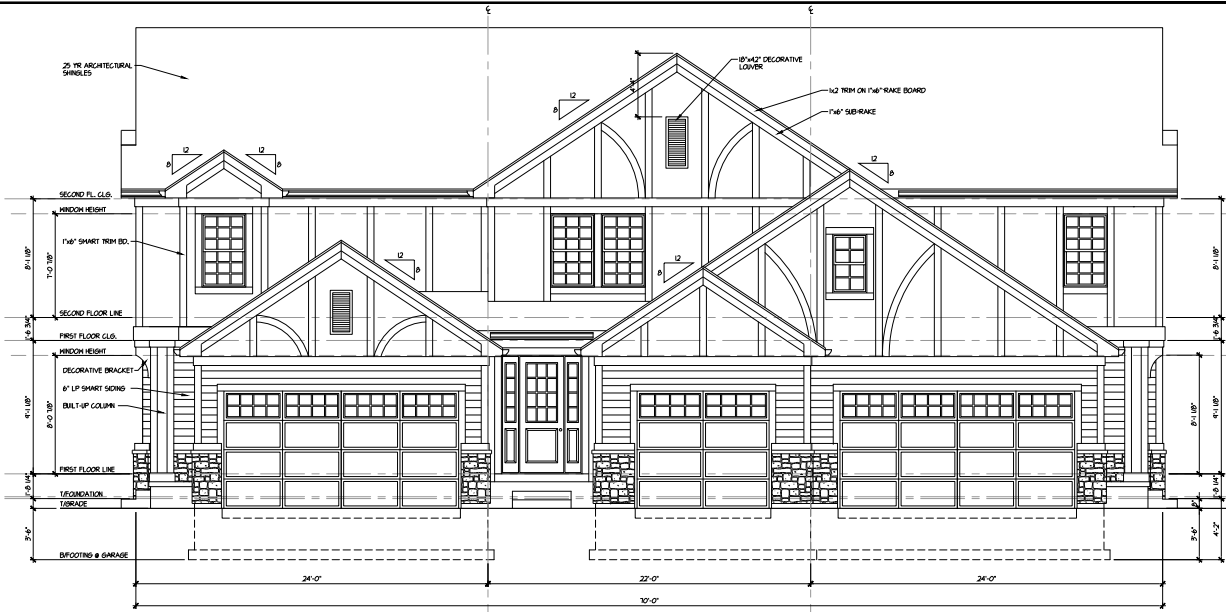
**TREE SURVEY & PRESERVATION PLAN**  
**LOTS 7-12 IN THE OAKS OF ST. CHARLES, ILLINOIS**

Project Manager: M.L.A.  
Engineer: M.L.A.  
Date: 02.05.2024  
Project No. 24-007  
Sheet **L2.0**



**ROOF ASSEMBLY PLAN**  
SCALE: 1/8" = 1'-0"

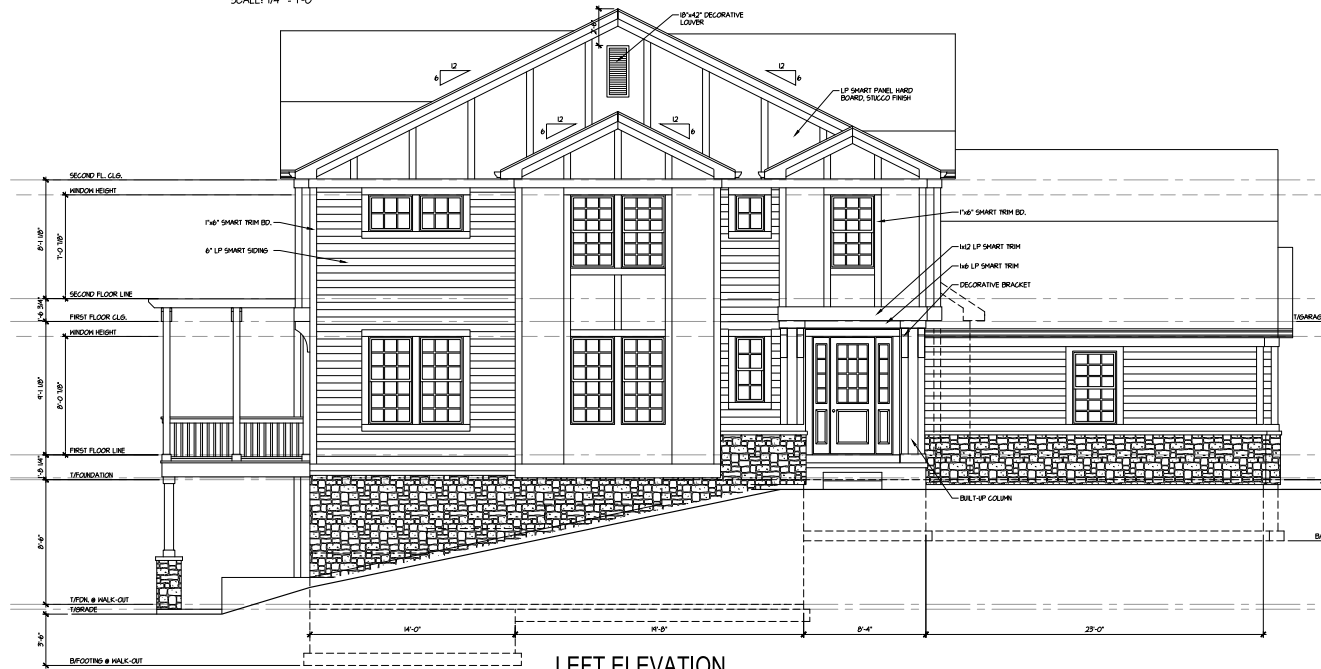
DOWNSPOUTS MUST NOT  
DRAIN INTO OR TOWARD  
ADJACENT PROPERTIES -  
SEE ENGINEERING PLANS



**FRONT ELEVATION**  
SCALE: 1/4" = 1'-0"

AREA	ATTIC VENTILATION SCHEDULE (2012 IRC)						MINIMUM VENTILATION REQUIRED					
	AREA	AREA	AREA	AREA	AREA	AREA	AREA	AREA	AREA	AREA	AREA	
END UNIT 1	496	416	294	281	250	25	44	298	228	0	0	
BARNDROP ROOF	288	281	124	124	124	12	88	124	0	0	0	
WINDOZ MET	454	450	224	224	200	20	188	224	206	0	0	
GARAGE ROOF	331	342	0	41	40	4	84	0	0	100	2	
END UNIT 2	400	410	226	204	200	20	184	226	228	0	0	
GARAGE ROOF	456	391	124	124	124	12	88	124	0	0	0	

NOTES:  
1. THIS VENTILATION SCHEDULE IS BASED ON THE ASSUMPTION THAT THE ROOF IS A GABLE OR A GABLE WITH A HALF-PITCH OF 12:12 OR GREATER. IF THE ROOF IS A FLAT OR A LOW-PITCH ROOF, THE VENTILATION SCHEDULE SHOULD BE ADJUSTED TO REFLECT THE DIFFERENCE IN AIR FLOW CHARACTERISTICS.  
2. ALL VENTILATION AREAS MUST BE CALCULATED BY DIVIDING THE SQUARE FOOTAGE OF THE ROOF BY THE SQUARE FOOTAGE OF THE VENTILATION AREA.  
3. ALL VENTILATION AREAS MUST BE CALCULATED BY DIVIDING THE SQUARE FOOTAGE OF THE ROOF BY THE SQUARE FOOTAGE OF THE VENTILATION AREA.  
4. ALL VENTILATION AREAS MUST BE CALCULATED BY DIVIDING THE SQUARE FOOTAGE OF THE ROOF BY THE SQUARE FOOTAGE OF THE VENTILATION AREA.  
5. ALL VENTILATION AREAS MUST BE CALCULATED BY DIVIDING THE SQUARE FOOTAGE OF THE ROOF BY THE SQUARE FOOTAGE OF THE VENTILATION AREA.  
6. ALL VENTILATION AREAS MUST BE CALCULATED BY DIVIDING THE SQUARE FOOTAGE OF THE ROOF BY THE SQUARE FOOTAGE OF THE VENTILATION AREA.  
7. ALL VENTILATION AREAS MUST BE CALCULATED BY DIVIDING THE SQUARE FOOTAGE OF THE ROOF BY THE SQUARE FOOTAGE OF THE VENTILATION AREA.  
8. ALL VENTILATION AREAS MUST BE CALCULATED BY DIVIDING THE SQUARE FOOTAGE OF THE ROOF BY THE SQUARE FOOTAGE OF THE VENTILATION AREA.  
9. ALL VENTILATION AREAS MUST BE CALCULATED BY DIVIDING THE SQUARE FOOTAGE OF THE ROOF BY THE SQUARE FOOTAGE OF THE VENTILATION AREA.  
10. ALL VENTILATION AREAS MUST BE CALCULATED BY DIVIDING THE SQUARE FOOTAGE OF THE ROOF BY THE SQUARE FOOTAGE OF THE VENTILATION AREA.



**LEFT ELEVATION**  
SCALE: 1/4" = 1'-0"

- TYPICAL ROOF NOTES**
- TYPICAL ROOF PITCHES  
12:12 TYP. FRONT TO BACK | 12:12 TYP. SIDE TO SIDE
- TYPICAL RAKE & EAVE OVERHANGS  
12" SIDE RAKES | 12" FRONT RAKES | 12" ALL EAVES  
UNLESS NOTED OTHERWISE
- NOTES:  
1. ADJUST RAFTERS AS REQUIRED TO MAINTAIN SPECIFIED SLOPE/RISE LOCATIONS. SEE FLOOR PLAN FOR LOCATIONS. (N/A)  
2. INSTALL AIR BARRIERS BETWEEN ROOFES IN THE ATTIC. ABOVE ALL SOFFIT VENTS AND AT TRANSITIONS FROM LOWER LEVELS. ATTIC SPACES TO UPPER LEVEL ATTIC SPACES.  
3. CARPENTERS MUST GET VENTILATION OPENINGS IN UNDERLAYER ROOF SHEATHING WHERE SECONDARY ROOF STRUCTURES OVERLAY LOWER ROOF PLANS TO PROMOTE AIRFLOW AND PROTECT CARPENTERS AIR. MIN. OPENING 27" X 36".  
4. PROVIDE 2" X 4" WATER SHIELD FROM EAVE TO 24 INCHES INSIDE EXTERIOR SIDING WALL & AT ALL VALLEYS.  
5. VALLEY FLASHING TO SOFFIT WITH THE UNDERLAYER.  
6. PROVIDE MINIMUM NET FREE CROSS VENTILATION AREA FOR ATTIC ABOVE HABITABLE SPACES OF 1/10 SQ. FT. PER LOCAL BUILDING CODES. VENTING SHOULD BE BALANCED AT SOFFIT/ROOF WALL. ATTEND THE RIDGE LINES AND ARCHES. SOFFIT WALL IN THE SOFFITS. SEE ROOF PLAN FOR SPECIFIC QUANTITY OF RIDGE VENT, SOFFIT VENT, OR SOFFIT VENTS REQUIRED.  
A. SOFFIT AND RIDGE VENTING LISTED IS NOT THE TOTAL AVAILABLE IN ALL CASES.  
B. WHERE SOFFIT VENTING REQUIRED IS LESS THAN TOTAL AVAILABLE, EQUALLY SPACE VENTING SOFFIT.  
1. SOFFIT VENT PRODUCT TO BE # 1154 1/2" X 12" 5/8" I.D.  
2. RIDGE VENT PRODUCT TO BE # 1154 1/2" X 12" 5/8" I.D. OR APPROVED EQUAL. PROVIDE POT VENTS WHERE CALLED FOR. # 50 5/8" INVENT

Design Firm License # 184-000073  
**TLH ARCHITECTS & DEVELOPERS LTD.**  
ARCHITECT  
1100 W. WILSON  
LONG GROVE, ILLINOIS  
PH: (815) 772-8443

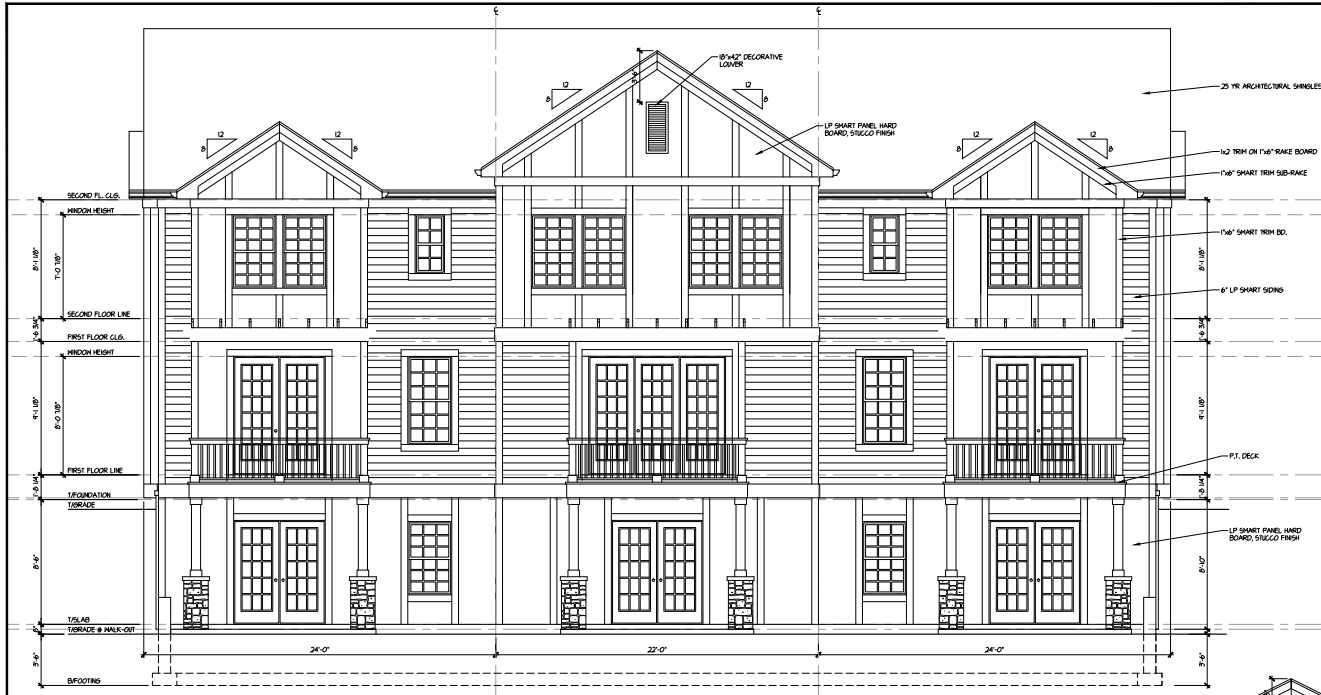
MD. DATE BY ISSUED FOR  
1 02/23/24 TH END PLAN EVALUATION

**The Oaks of St. Charles TH**  
7-12 White Oak Circle  
St. Charles, Illinois  
Elevations and Roof Plan

DATE: 02/23/2024  
DRAWN BY: K.K.  
CHECKED BY: T.H.  
PROJECT NO: ---

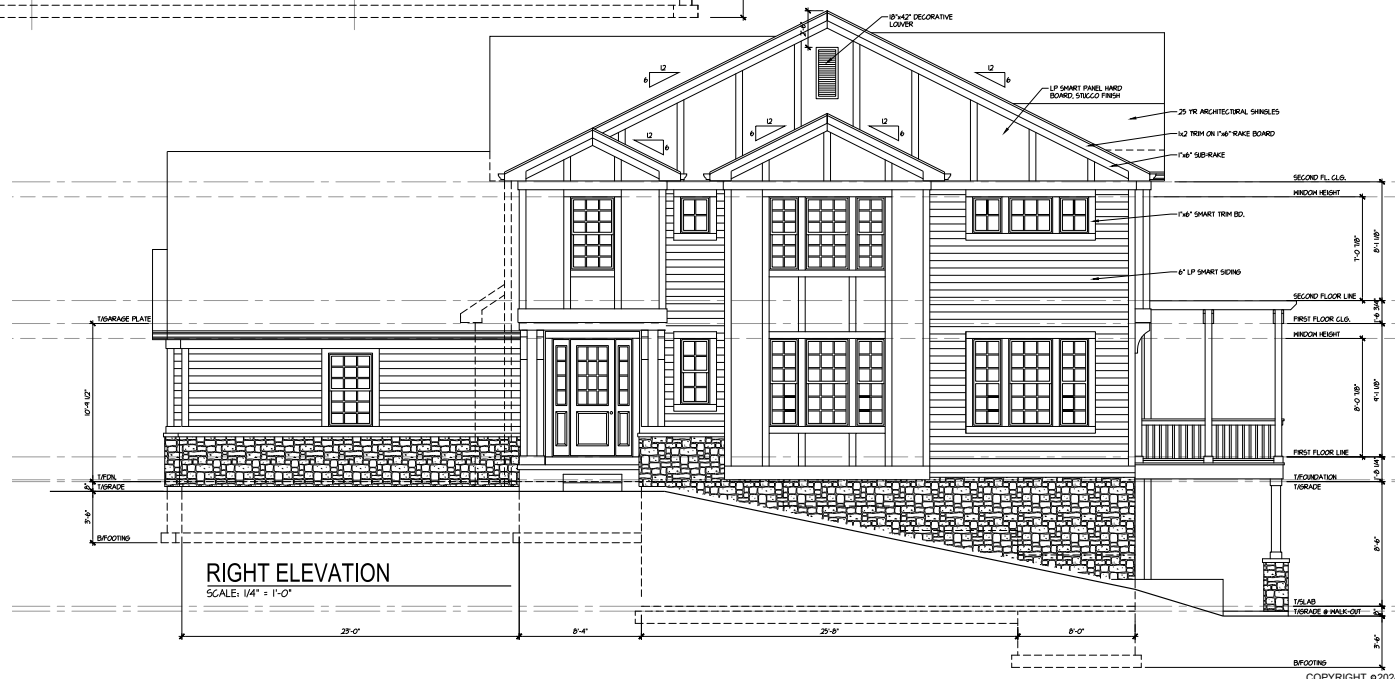
Sheet No.  
**A1.1**

COPYRIGHT ©2024



**REAR ELEVATION**

SCALE: 1/4" = 1'-0"



**RIGHT ELEVATION**

SCALE: 1/4" = 1'-0"

Design Firm License # 184-000073

**TLH ARCHITECTS & DEVELOPERS LTD.**  
 TERRY L. HEDGECOCK  
 ARCHITECT  
 LONG GROVE ILLINOIS  
 PH: (815) 772-8443

NO.	DATE	BY	ISSUED FOR
1	02/23/24	TH	FINAL ELEVATIONS

**The Oaks of St. Charles TH**  
 7-12 White Oak Circle  
 St. Charles, Illinois  
 Elevations

DATE:	02/23/2024
DRAWN BY:	K.K.
CHECKED BY:	T.H.
PROJECT NO.:	---

Sheet No.  
**A1.2**