

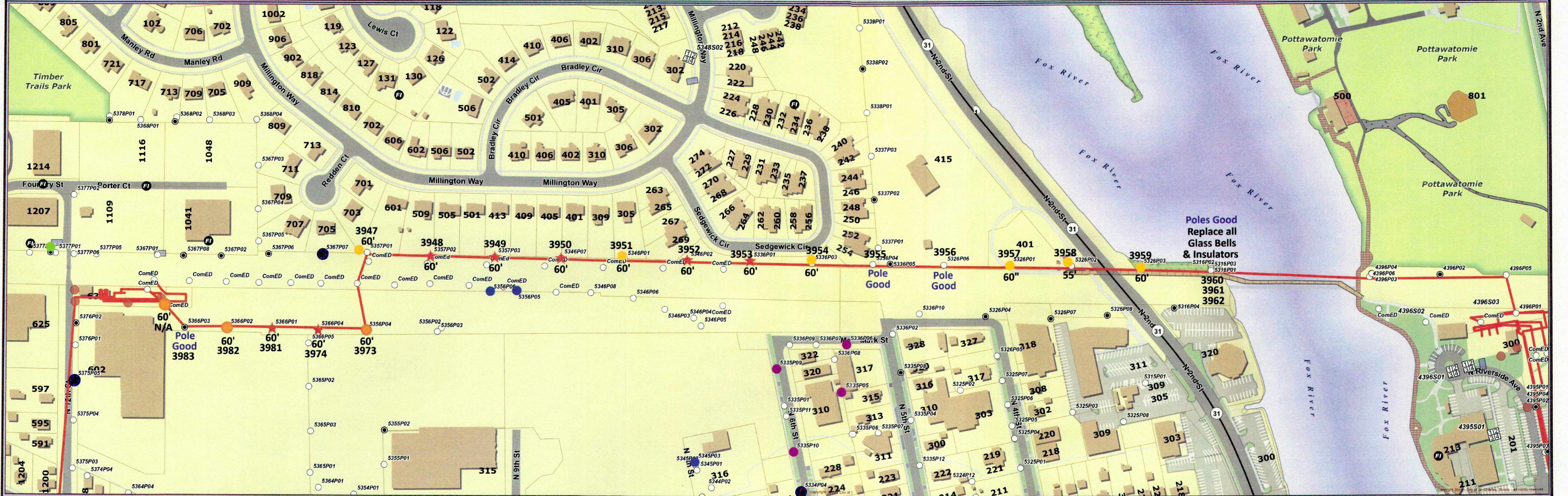


### 34kV Wood Pole Replacement - Line 30012

RAYMOND ROGE  
MARK KOENEN

### 34kV Wood Pole Replacement - Line 30012

RAYMOND ROGINA Mayor  
MARK KOENEN City Administrator



**Poles Good  
Replace all  
Glass Bells  
& Insulators**

**Pole Good**

**Pole Good**

**60"**

**55'**

**60'**

**60'**

**60'**

**60'**

**60'**

**60'**

**60'**

Data Source:  
City of St. Charles, Illinois  
Kane County, Illinois  
DuPage County, Illinois

Coordinate System: Illinois State Plane East  
Projection: Transverse Mercator  
North American Datum 1983

Printed On: March 26, 2019 09:25

Replace (16) Wood 34kV Poles between the Fox River and Sub. #2 on 12th Street with 60' Poles  
Poles are Located on the NS of the Railroad R.O.W. crossing over to the SS of the R.O.W. near Sub. #2  
All New 34kV Poles will be Tangent Poles with some 12kV Underbuild except (2) Corner Poles.  
34kV Pole Located inside fence at Sub. #2 (No Tag) will require St. Charles Watchman during Replacement.

This work was created for planning purposes only and is provided as is, without warranty of any kind, either expressed or implied. The information represented may contain proprietary and confidential property of the City of St. Charles, Illinois. Under United States Copyright protection laws you may not use, reproduce, or distribute any part of this document without prior written permission. To obtain written permission please contact the City of St. Charles at Two East Main Street, St. Charles, IL 60174.

Replace (16) Wood 34kV Poles between the Fox River and Sub. #2 on 12th Street with 60' Poles  
Poles are Located on the NS of the Railroad R.O.W. crossing over to the SS of the R.O.W. near Sub. #2

This work was created for planning purposes only and is provided as is, without warranty of any kind, either expressed or implied. The information represented may contain proprietary and confidential property of the City of St. Charles, Illinois. Under United States Copyright protection laws you may not use, reproduce, or distribute any part of this document without prior written permission. To obtain written permission please contact the City of St. Charles at Two East Main Street, St. Charles, IL 60174.