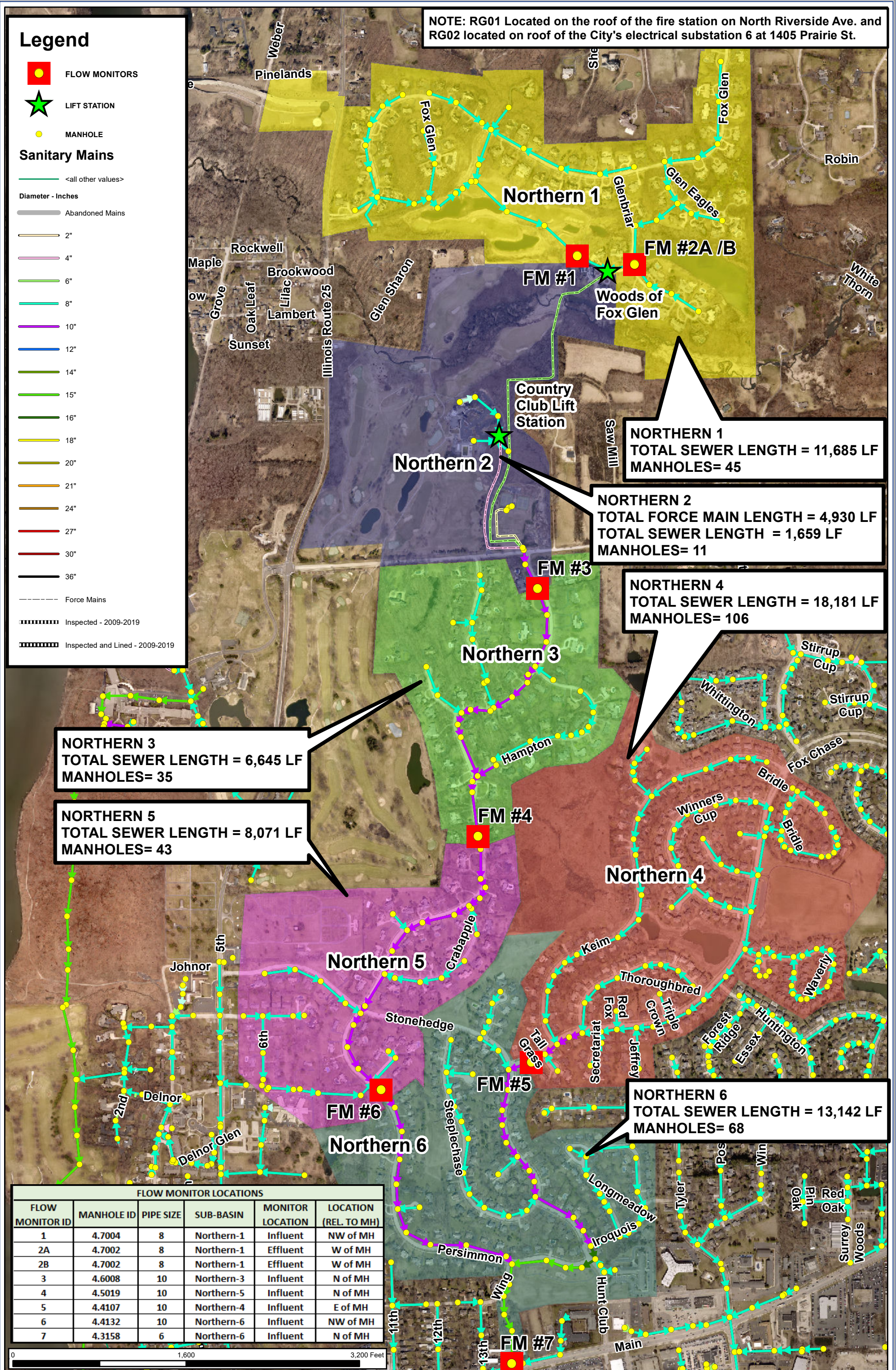


NOTE: RG01 Located on the roof of the fire station on North Riverside Ave. and RG02 located on roof of the City's electrical substation 6 at 1405 Prairie St.

### Legend

- FLOW MONITORS
  - ★ LIFT STATION
  - MANHOLE
- Sanitary Mains**
- <all other values>
- Diameter - Inches
- Abandoned Mains
  - 2"
  - 4"
  - 6"
  - 8"
  - 10"
  - 12"
  - 14"
  - 15"
  - 16"
  - 18"
  - 20"
  - 21"
  - 24"
  - 27"
  - 30"
  - 36"
- Force Mains
- Inspected - 2009-2019
  - Inspected and Lined - 2009-2019



**NORTHERN 1**  
TOTAL SEWER LENGTH = 11,685 LF  
MANHOLES= 45

**NORTHERN 2**  
TOTAL FORCE MAIN LENGTH = 4,930 LF  
TOTAL SEWER LENGTH = 1,659 LF  
MANHOLES= 11

**NORTHERN 4**  
TOTAL SEWER LENGTH = 18,181 LF  
MANHOLES= 106

**NORTHERN 3**  
TOTAL SEWER LENGTH = 6,645 LF  
MANHOLES= 35

**NORTHERN 5**  
TOTAL SEWER LENGTH = 8,071 LF  
MANHOLES= 43

**NORTHERN 6**  
TOTAL SEWER LENGTH = 13,142 LF  
MANHOLES= 68

FLOW MONITOR LOCATIONS					
FLOW MONITOR ID	MANHOLE ID	PIPE SIZE	SUB-BASIN	MONITOR LOCATION	LOCATION (REL. TO MH)
1	4.7004	8	Northern-1	Influent	NW of MH
2A	4.7002	8	Northern-1	Effluent	W of MH
2B	4.7002	8	Northern-1	Effluent	W of MH
3	4.6008	10	Northern-3	Influent	N of MH
4	4.5019	10	Northern-5	Influent	N of MH
5	4.4107	10	Northern-4	Influent	E of MH
6	4.4132	10	Northern-6	Influent	NW of MH
7	4.3158	6	Northern-6	Influent	N of MH

