

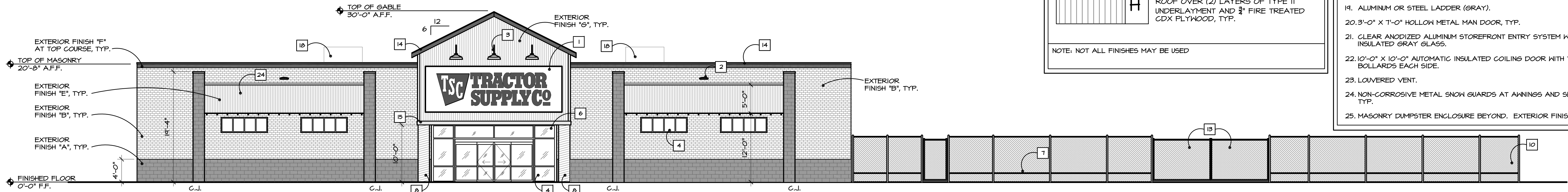
COLOR SCHEDULE	
<b>PAINTING SPECIFICATIONS</b>	
<b>PIPE BOLLARDS AND LIGHTING POLE BASES</b>	
GLOSS FINISH - COLOR TO BE S940B4 SAFETY YELLOW	
1ST COAT:	S-H KEM KROMIK UNIVERSAL METAL PRIMER, B50Z SERIES
2ND COAT:	S-H POLY-LON 1900, B65V525 PART A / B65V525 PART B
3RD COAT:	S-H POLY-LON 1900, B65V525 PART A / B65V525 PART B (APPLY AS NEEDED FOR COMPLETE COVERAGE) (PRODUCT IS PACKAGE SAFETY YELLOW; COLOR ACCEPTANCE SHOULD BE APPROVED BY TRACTOR SUPPLY)
<b>LOADING DOCK GUARDRAILS AND HOLLOW METAL DOOR/FRAMES</b>	
GLOSS FINISH - COLOR TO MATCH S910Z POWHER GREY	
1ST COAT:	S-H KEM KROMIK UNIVERSAL METAL PRIMER, B50Z SERIES (6.0 - 8.0 MILS WET / 3.0 - 4.0 MILS DRY PER COAT)
2ND COAT:	S-H INDUSTRIAL ENAMEL H5, B54Z400 SERIES
3RD COAT:	S-H INDUSTRIAL ENAMEL H5, B54Z400 SERIES (2.0 - 4.0 MILS DRY PER COAT)
(APPLY AS NEEDED FOR COMPLETE COVERAGE)	
<b>NOTES:</b>	
1) NOT ALL COLORS / PAINTS MAY BE USED	
2) SEE TSC CRITERIA PLANS FOR ALTERNATE PPS PAINT SPECIFICATIONS	
3) GENERAL CONTRACTOR, OR THE OWNERS TESTING COMPANY SHALL PROVIDE MOISTURE TESTING OF ALL CMU AND CONCRETE EXTERIOR WALL PER ASTM D4263 PRIOR TO APPLICATION OF PAINT. TSC PROJECT MANAGER MUST APPROVE THE APPLICATION OF PAINT IN WRITING, IF THE MOISTURE CONTENT IS ABOVE 15%.	

**GENERAL NOTES:**

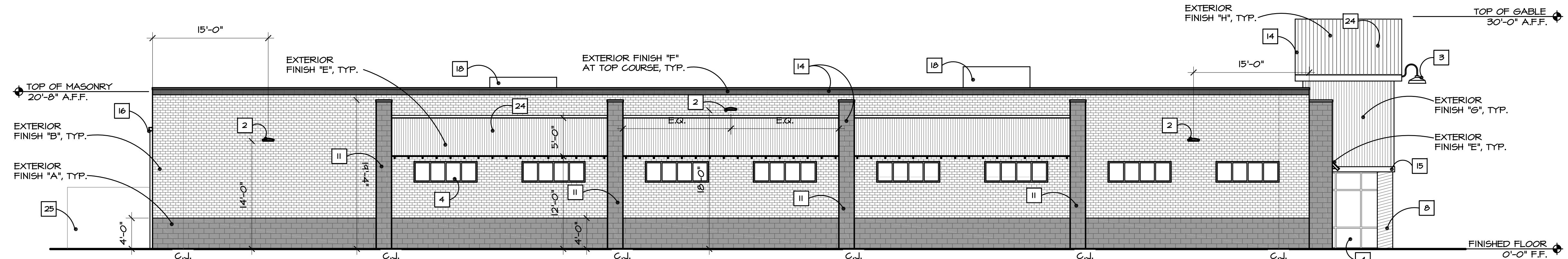
- ALL PAINTING APPLICATIONS MAY UTILIZE BRUSH, ROLLER OR AIRLESS SPRAYER; HOWEVER, ALL COATS MUST BE BACK-ROLLED. SEE SHERWIN WILLIAMS DATA SHEET APPLICATION RECOMMENDATIONS
- COORDINATE WITH MECHANICAL, PLUMBING, AND ELECTRICAL DRAWINGS FOR ALL PENETRATIONS IN THE EXTERIOR FACADES.

EXTERIOR FINISH SCHEDULE	
<b>A</b>	8" SPLIT FACE CMU WITH INTEGRAL COLOR TO MATCH PAINT S910Z - SANDERLING, TYP. BELOW 4'-0" A.F.F. TYP.
<b>B</b>	ECHOLON QUICKBRICK CMU - FOUNDER FINISH COLOR - BONE (OR APPROVED EQUAL), ABOVE 4'-0" A.F.F. TYP.
<b>C</b>	NOT USED
<b>D</b>	NOT USED
<b>E</b>	22 GA. GALVANIZED CORRUGATED STEEL METAL AWNING (3'-11" DEEP) WITH 'MATTE' FINISH ATTACHED TO STEEL PAINTED SAFETY RED, TYP.
<b>F</b>	8" SPLIT FACE CMU WITH INTEGRAL COLOR TO MATCH PAINT SAFETY RED, TYP.
<b>G</b>	22 GA. GALVANIZED STEEL PANEL WITH 'MATTE' FINISH OVER TYVEK COMMERCIAL WRAP AND 3/8" FIRE TREATED APA RATED SHEATHING, TYP.
<b>H</b>	GALVANIZED STANDING SEAM METAL ROOF OVER (2) LAYERS OF TYPE II UNDERLAYMENT AND 3/8" FIRE TREATED CDX PLYWOOD, TYP.
NOTE: NOT ALL FINISHES MAY BE USED	

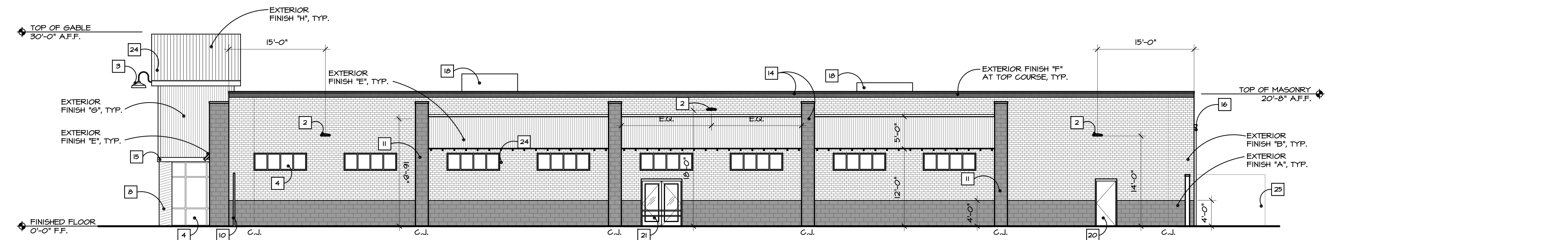
- KEYED NOTES:**
- NEW SIGNAGE PROVIDED AND INSTALLED BY OTHERS. G.C. TO PROVIDE AND INSTALL JUNCTION BOX AND CIRCUIT TO PANEL.
  - EXTERIOR WALL PACK FIXTURE, TYP.
  - THREE (3) RED GOOSENECK FIXTURES MOUNTED AT 21'-6" AFF. TO BOTTOM OF FIXTURE, TYP.
  - ALUMINUM STOREFRONT WITH GRAY TINTED GLASS. SEE DOOR/WINDOW SCHEDULE ON SHEET A-11 FOR ADDITIONAL INFORMATION.
  - 4'-0" SWING GATE WITH EXIT DEVICE. DH FACE TO PROVIDE EGRESS HARDWARE AS NECESSARY.
  - PROVIDE 4" TALL BLOCK STYLE NUMBERS FOR ADDRESS IN CONTRASTING COLOR. COORDINATE WITH LOCAL FIRE MARSHAL.
  - BOTTOM RAIL AT 18" ABOVE GRADE, TYP.
  - 24" DIAMETER CORRUGATED GALVANIZED PIPE ANCHORED TO STRUCTURAL PIPE COLUMN, TYP.
  - DOOR BELL LOCATION.
  - 8'-0" HIGH BLACK VINYL COATED CHAIN LINK FENCE, TYP.
  - 24"x24" COLUMN WITH EXTERIOR FINISH 'A', TYP.
  - 36" X 36" ACCESS DOOR TO BE FIELD LOCATED WHERE THERE IS NOT INTERRUPTION OF TRUSS FRAMING.
  - TWO (2) 10'-0" ROLLING SWING GATES, TYP.
  - ALL PRE-FINISHED FASCIA AND COPING AT FRONT FACADE TO MATCH SAFETY RED FINISH, TYP.
  - POP SOLUTIONS RED STRIPE FROM 10'-0" TO 10'-8" A.F.F. AT FRONT TOWER, TYP.
  - PRE-FINISHED METAL GUTTERS AND 6" DOWNSPOUTS TO MATCH UNICLAD ALMOND, TYP. CONNECT DOWNSPOUT TO STORM SEWER WITH 6" SCHEDULE 40 PVC PIPE STUB CUTS WITH FITTINGS. SEE CIVIL DRAWINGS FOR MORE INFORMATION, TYP.
  - BARRYCRAFT B25A DOWNSPOUT BOOT OR APPROVED EQUAL, TYP.
  - ROOFTOP MECHANICAL UNITS TO BE SCREENED WITH CITYSCAPE ENVISOR SCREENS TO MATCH EXTERIOR FINISH 'B' BELOW. SEE STRUCTURAL AND MECHANICAL PLANS FOR MORE INFORMATION, TYP.
  - ALUMINUM OR STEEL LADDER (GRAY).
  - 3'-0" X 7'-0" HOLLOW METAL MAN DOOR, TYP.
  - CLEAR ANODIZED ALUMINUM STOREFRONT ENTRY SYSTEM WITH TEMP. INSULATED GRAY GLASS.
  - 10'-0" X 10'-0" AUTOMATIC INSULATED COILING DOOR WITH TWO (2) BOLLARDS EACH SIDE.
  - LOUVERED VENT.
  - NON-CORROSIVE METAL SNOW GUARDS AT AWNINGS AND SLOPES ROOF, TYP.
  - MASONRY DUMPSTER ENCLOSURE BEYOND. EXTERIOR FINISH 'A', TYP.



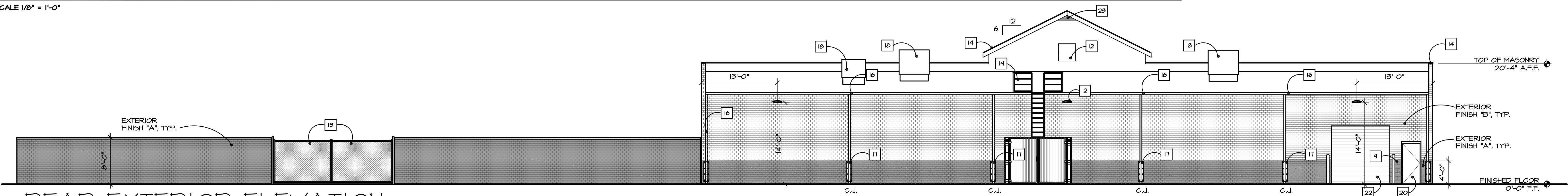
**1**  
A-2  
FRONT EXTERIOR ELEVATION  
SCALE 1/8" = 1'-0"



**2**  
A-2  
LEFT EXTERIOR ELEVATION  
SCALE 1/8" = 1'-0"



**3**  
A-2  
RIGHT EXTERIOR ELEVATION  
SCALE 1/8" = 1'-0"



**4**  
A-2  
REAR EXTERIOR ELEVATION  
SCALE 1/8" = 1'-0"

UNLESS NOTED AND SEALED THIS DRAWING IS A PRELIMINARY AND NOT A LEGAL DOCUMENT.