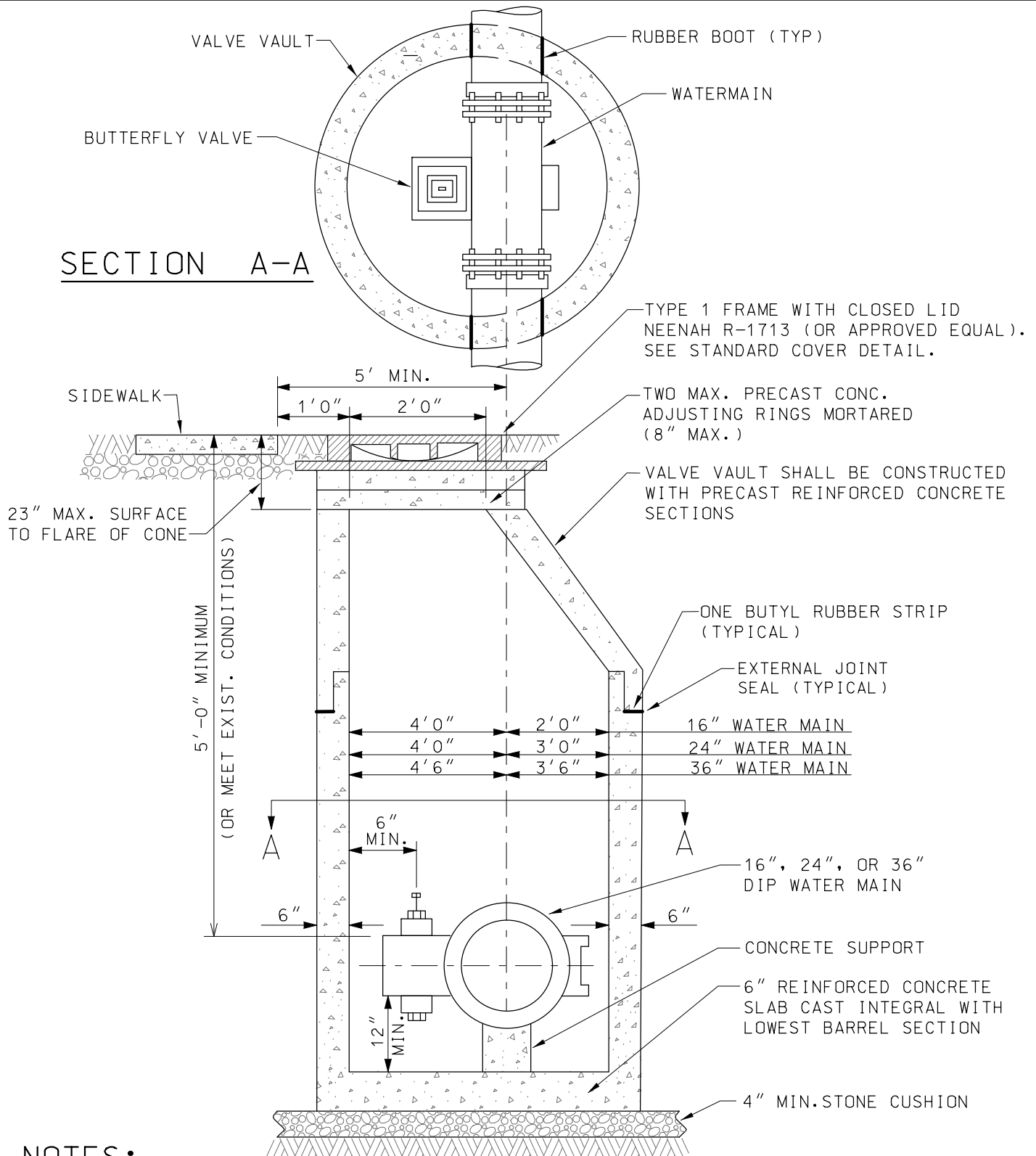
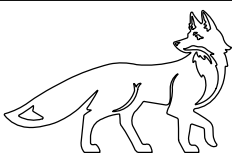


SECTION A-A



NOTES:

1. VALVE VAULT MUST CONFORM TO ASTM C-478, VALVE TO CONFORM TO AWWA C504.
2. USE ECCENTRIC/OFFSET CONE ONLY.
3. VAULT SECTIONS TO BE TONGUE AND GROOVED.
4. ALL NON-PRECAST PIPE OPENINGS TO BE CORED AND RUBBER BOOTED.
5. BACKFILL MATERIAL SHALL BE IDOT CA-7.
6. ALL BOLTS, NUTS & WASHERS SHALL BE COMPOSED OF 304 GRADE STAINLESS STEEL.
7. FRAMES LOCATED WITHIN PAVED AREAS SHALL BE SET ACCORDING TO FRAME AND LID ADJUSTMENT DETAIL.



CITY OF ST. CHARLES
 ILLINOIS • SINCE 1834
Pride of the Fox

BUTTERFLY VALVE VAULT

DATE: 9-10-2021

NOT TO SCALE

REVISED:

DRAWING NO. B-02