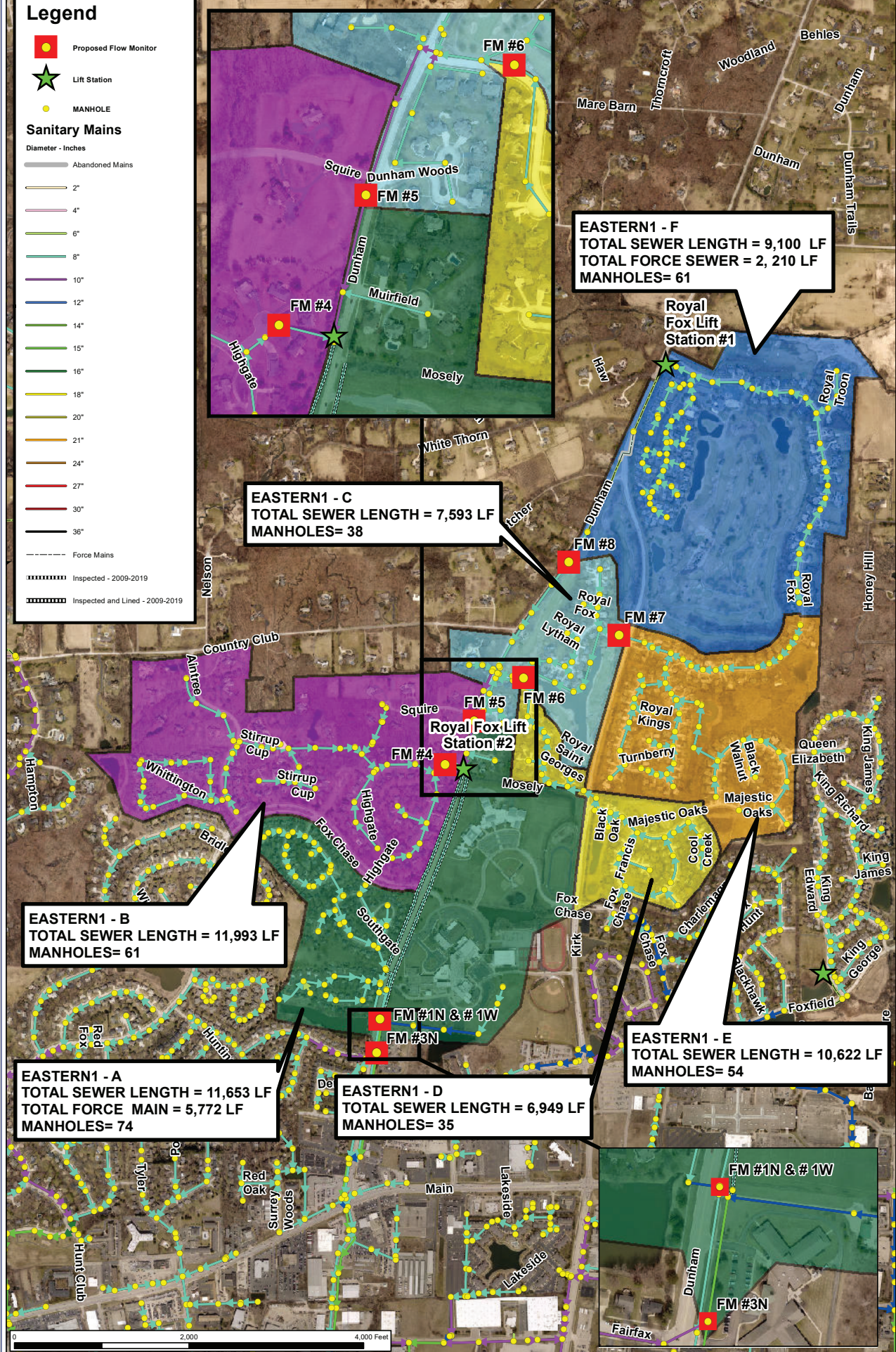
 <p>CITY OF ST. CHARLES ILLINOIS • 1834</p>	<b>AGENDA ITEM EXECUTIVE SUMMARY</b>		Agenda Item number: *6.G
	Title:	<b>Recommendation to Approve a Resolution Awarding an Agreement for Engineering Services for Capacity, Management, Operations and Maintenance (CMOM) Phase 1 Flow Monitoring</b>	
Presenter:	<b>Tim Wilson, Environmental Services Division</b>		
<b>Meeting:</b> Government Services Committee		<b>Date:</b> April 1, 2024	
<b>Proposed Cost:</b> \$ 86,578		<b>Budgeted Amount:</b> \$ 110,000	<b>Not Budgeted:</b> <input type="checkbox"/>
<b>TIF District:</b> Choose an item.			
<b>Executive Summary</b> (if not budgeted, please explain):			
<p>The approach of the EPA approved Capacity, Management, Operations, and Maintenance (CMOM) Program was to divide the sewer collection system into 12 sub-basins. Each sub-basin was divided into three phases, each phase lasting one year. The first year for this sub-basin consists of infiltration and inflow sewer flow monitoring; the second year of the project would include a sewer system evaluation survey; the final year of the sub-basin would include rehabilitation.</p> <p>As detailed in the CMOM Plan, City Staff is requesting to continue the Flow Monitoring Program in Eastern 1 (see map). These Basins were selected as the area this year due to the age of the infrastructure. The CMOM goal is to reduce the amount of infiltration and inflow.</p> <p>The Eastern 1 basin is generally located on the northeast side of the community. It is generally bound by Royal Fox Country Club to the north, corporate to the east, St. Charles East High School to the south and the Fox Chase Subdivision to the west.</p> <p>Flow monitoring will include 7 flow monitors for an eight-week period of time while local weather data is collected. At the completion of Phase I (flow monitoring), recommendations will be made for Phase II, which is the Sewer System Evaluation Survey.</p>			
<b>Attachments</b> (please list):			
*Area Map			
<b>Recommendation/Suggested Action</b> (briefly explain):			
Recommendation to approve a Resolution awarding an Agreement for Engineering Services for Eastern 1 Basin Phase 1 Flow Monitoring to Engineering Enterprises Inc. for the amount of \$86,578.			

### Legend

- Proposed Flow Monitor
- ★ Lift Station
- MANHOLE

- #### Sanitary Mains
- Diameter - Inches
- Abandoned Mains
  - 2"
  - 4"
  - 6"
  - 8"
  - 10"
  - 12"
  - 14"
  - 15"
  - 16"
  - 18"
  - 20"
  - 21"
  - 24"
  - 27"
  - 30"
  - 36"
- Force Mains
- ▬ Inspected - 2009-2019
- ▬ Inspected and Lined - 2009-2019



**EASTERN1 - F**  
 TOTAL SEWER LENGTH = 9,100 LF  
 TOTAL FORCE SEWER = 2, 210 LF  
 MANHOLES= 61

**EASTERN1 - C**  
 TOTAL SEWER LENGTH = 7,593 LF  
 MANHOLES= 38

**EASTERN1 - B**  
 TOTAL SEWER LENGTH = 11,993 LF  
 MANHOLES= 61

**EASTERN1 - A**  
 TOTAL SEWER LENGTH = 11,653 LF  
 TOTAL FORCE MAIN = 5,772 LF  
 MANHOLES= 74

**EASTERN1 - D**  
 TOTAL SEWER LENGTH = 6,949 LF  
 MANHOLES= 35

**EASTERN1 - E**  
 TOTAL SEWER LENGTH = 10,622 LF  
 MANHOLES= 54

