 <p>CITY OF ST. CHARLES ILLINOIS • 1834</p>	AGENDA ITEM EXECUTIVE SUMMARY		Agenda Item number: *5.L
	Title:	Recommendation to Approve a Resolution to Award Agreement for Engineering Services for Capacity, Management, Operations and Maintenance (CMOM) Phase 1 Flow Monitoring	
Presenter:	Tim Wilson		
Meeting: Government Services Committee		Date: April 24, 2023	
Proposed Cost: \$ 84,434		Budgeted Amount: \$100,000	Not Budgeted: <input type="checkbox"/>
TIF District: Choose an item.			
<p>Executive Summary (if not budgeted, please explain):</p> <p>The approach of the EPA approved Capacity, Management, Operations, and Maintenance (CMOM) Program was to divide the sewer collection system into 12 sub-basins. Each sub-basin was divided into three phases, each phase lasting one year. The first year for this sub-basin consists of infiltration and inflow sewer flow monitoring; the second year of the project would include a sewer system evaluation survey; the final year of the sub-basin would include rehabilitation.</p> <p>As detailed in the CMOM Plan, City Staff is requesting to continue the Flow Monitoring Program in Northern Central and Second-Place Basins (see map). These Basins were selected as the area this year due to the age of the infrastructure. The CMOM goal is to reduce the amount of infiltration and inflow.</p> <p>The Northern Central basin is generally located on the east side of the river and north of Main Street. It is generally bound by Country Club Road to the north, Rte. 25 to the east, the old railroad near State Street to the south and the Fox River to the west.</p> <p>The Second-Place basin is generally located on the east side of the river and near the City of Geneva. It is generally bound by Public Works building to the north, Kirk Road to the east, Division Street to the south and the Fox River to the west.</p> <p>Flow monitoring will include 13 flow monitors for an eight-week period of time while local weather data is collected. At the completion of Phase I (flow monitoring), recommendations will be made for Phase II, which is the Sewer System Evaluation Survey.</p>			
<p>Attachments (please list):</p> <ul style="list-style-type: none"> • Area Maps 			
<p>Recommendation/Suggested Action (briefly explain):</p> <p>Recommendation to approve a Resolution to award Agreement for Engineering Services for Northern Central and Second-Place Basins Phase 1 Flow Monitoring to Engineering Enterprises Inc. for the amount of \$84,834.</p>			

Legend

- Proposed Flow Monitor Locations
- ★ Lift Station
- MANHOLE

Sanitary Mains

Diameter - Inches

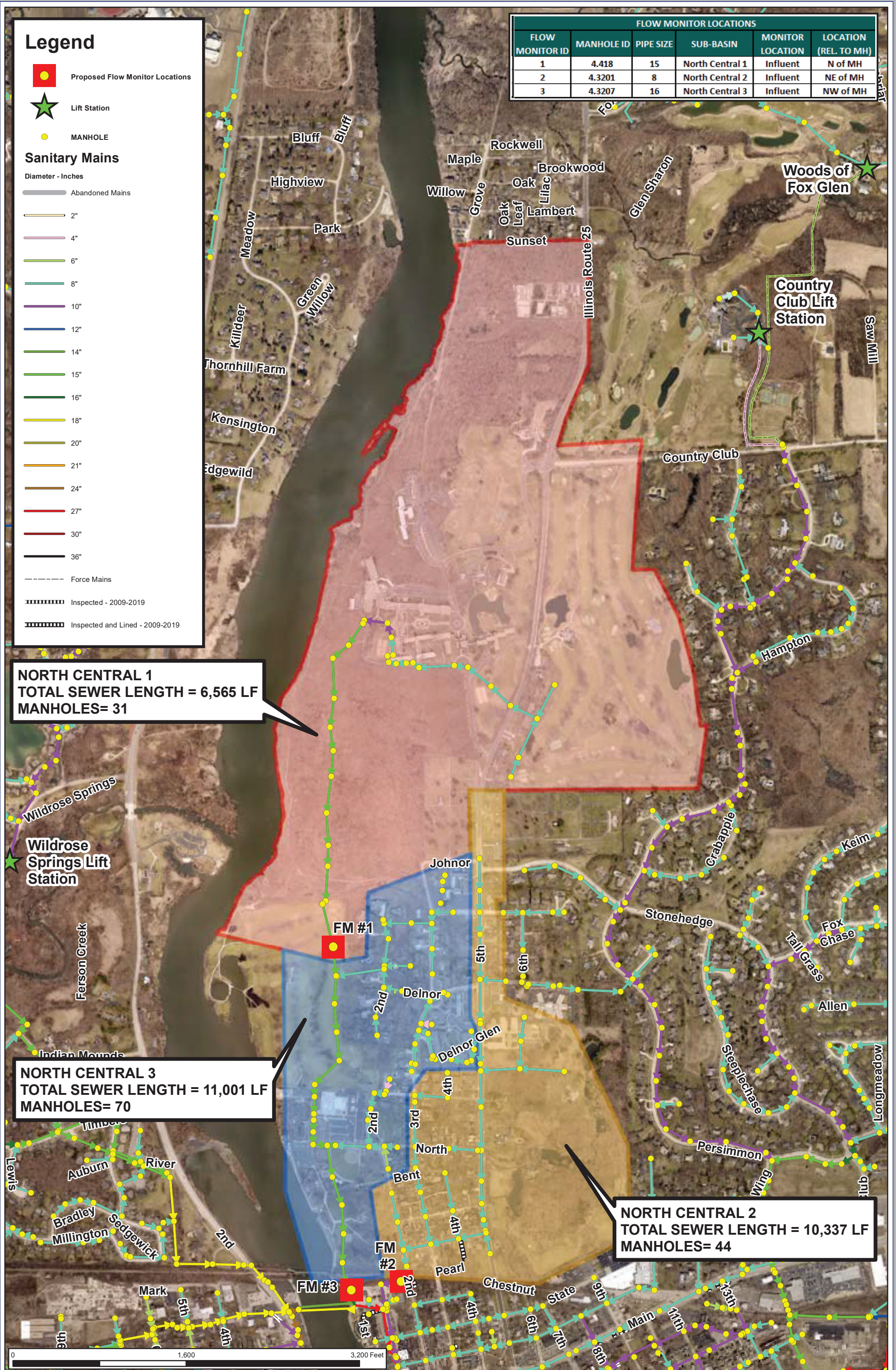
- Abandoned Mains
- 2"
- 4"
- 6"
- 8"
- 10"
- 12"
- 14"
- 15"
- 16"
- 18"
- 20"
- 21"
- 24"
- 27"
- 30"
- 36"
- - - Force Mains
- ▬▬▬▬▬ Inspected - 2009-2019
- ▬▬▬▬▬▬▬ Inspected and Lined - 2009-2019

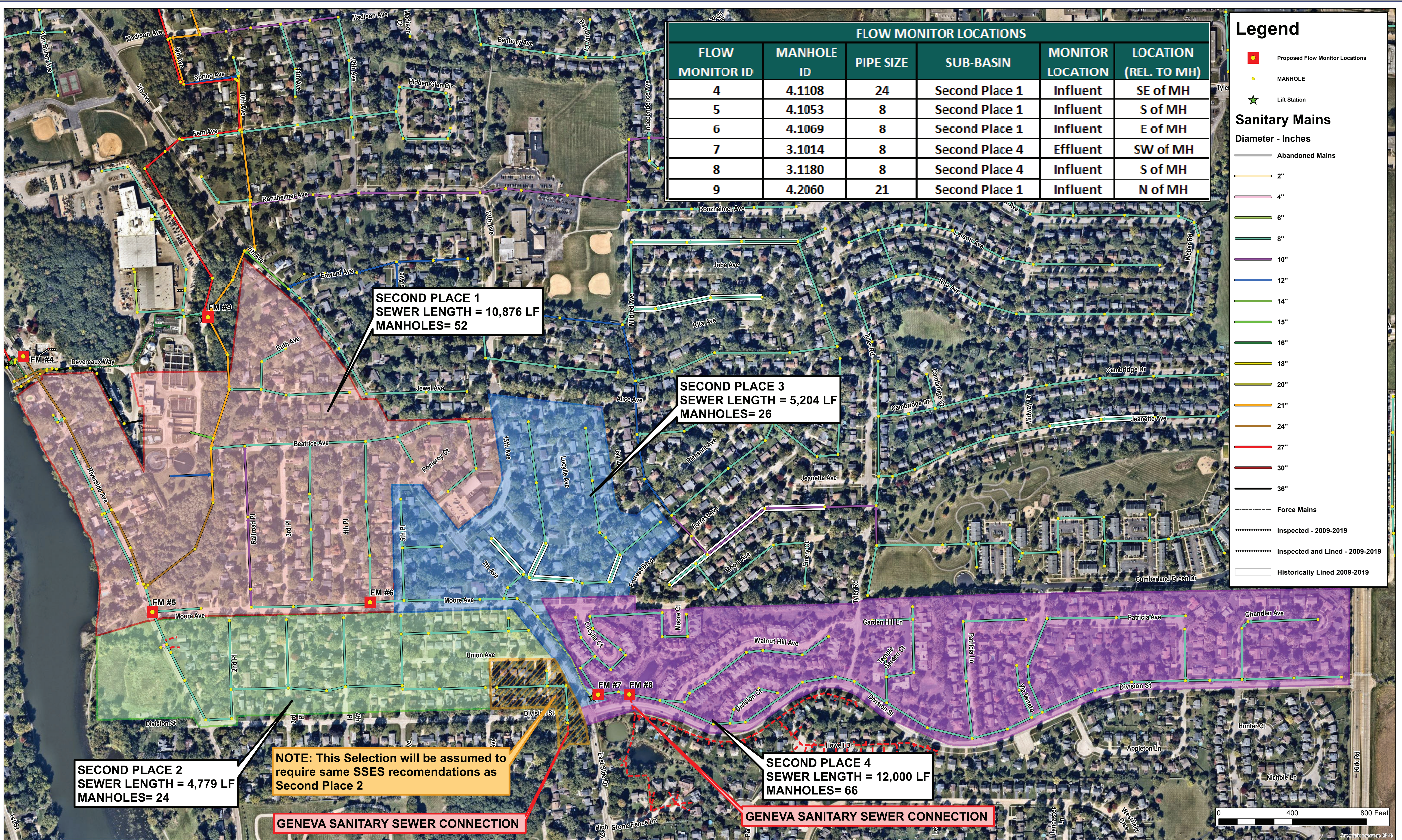
FLOW MONITOR LOCATIONS					
FLOW MONITOR ID	MANHOLE ID	PIPE SIZE	SUB-BASIN	MONITOR LOCATION	LOCATION (REL. TO MH)
1	4.418	15	North Central 1	Influent	N of MH
2	4.3201	8	North Central 2	Influent	NE of MH
3	4.3207	16	North Central 3	Influent	NW of MH

NORTH CENTRAL 1
TOTAL SEWER LENGTH = 6,565 LF
MANHOLES= 31

NORTH CENTRAL 3
TOTAL SEWER LENGTH = 11,001 LF
MANHOLES= 70

NORTH CENTRAL 2
TOTAL SEWER LENGTH = 10,337 LF
MANHOLES= 44





FLOW MONITOR LOCATIONS					
FLOW MONITOR ID	MANHOLE ID	PIPE SIZE	SUB-BASIN	MONITOR LOCATION	LOCATION (REL. TO MH)
4	4.1108	24	Second Place 1	Influent	SE of MH
5	4.1053	8	Second Place 1	Influent	S of MH
6	4.1069	8	Second Place 1	Influent	E of MH
7	3.1014	8	Second Place 4	Effluent	SW of MH
8	3.1180	8	Second Place 4	Influent	S of MH
9	4.2060	21	Second Place 1	Influent	N of MH

**SECOND PLACE 1
SEWER LENGTH = 10,876 LF
MANHOLES= 52**

**SECOND PLACE 3
SEWER LENGTH = 5,204 LF
MANHOLES= 26**

**SECOND PLACE 2
SEWER LENGTH = 4,779 LF
MANHOLES= 24**

NOTE: This Selection will be assumed to require same SSES recommendations as Second Place 2

**SECOND PLACE 4
SEWER LENGTH = 12,000 LF
MANHOLES= 66**

GENEVA SANITARY SEWER CONNECTION

GENEVA SANITARY SEWER CONNECTION

Legend

- Proposed Flow Monitor Locations
- MANHOLE
- Lift Station

Sanitary Mains
Diameter - Inches

- Abandoned Mains
- 2"
- 4"
- 6"
- 8"
- 10"
- 12"
- 14"
- 15"
- 16"
- 18"
- 20"
- 21"
- 24"
- 27"
- 30"
- 36"

Force Mains

- Inspected - 2009-2019
- Inspected and Lined - 2009-2019
- Historically Lined 2009-2019

