



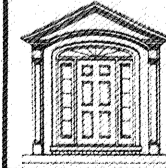
PROPOSED NORTH ELEVATION $\frac{1}{4}'' = 1'-0''$

WITH NEW IRON RAILINGS AND SUNBURST PANEL IN GABLE. 2 NEW SIGNS WITH LIGHTS. STRAIGHT FRIEZE TRIM REPLACES OLD WOOD ARCHES. CURVED STONE WALL IS TOPPED WITH COPPER GUTTER ON NEW FRIEZE TRIM THAT MATCHES THE GABLE FRIEZE TRIM.



PROPOSED WEST ELEVATION $\frac{1}{4}'' = 1'-0''$

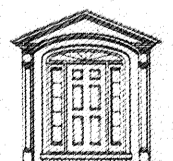
WITH NEW IRON RAILINGS AND SUNBURST PANEL IN GABLE. 2 NEW SIGNS WITH LIGHTS. CURVED STONE WALL IS TOPPED WITH COPPER GUTTER ON NEW FRIEZE TRIM THAT MATCHES THE GABLE FRIEZE TRIM.

 Ronald T. Haas & Associates, Inc. Wheaton, IL 60189 (630) 221-0240 architects	
REMODELING FOR MOSS FUNERAL HOME 100 S. THIRD ST. ST. CHARLES, IL	
project number: 1903 prepared by: RTH date: 5-24-19 sheet number:	■ PROPOSED NORTH ELEVATION ■ PROPOSED WEST ELEVATION



PROPOSED SOUTH ELEVATION 1/4" = 1'-0"

WITH NEW 2-STORY COLUMN PILASTERS AND NEW 4'-0" X 8'-0" SIGN WITH 3 LIGHTS.

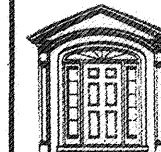
 Ronald T. Haas & Associates, Inc. Wheaton, IL 60189 (630) 221-0240 architects	
REMODELING FOR MOSS FUNERAL HOME 100 S. THIRD ST. ST. CHARLES, IL	project number: 1903 prepared by: RTH date: 5-24-19
■ PROPOSED SOUTH ELEVATION	sheet number: 2

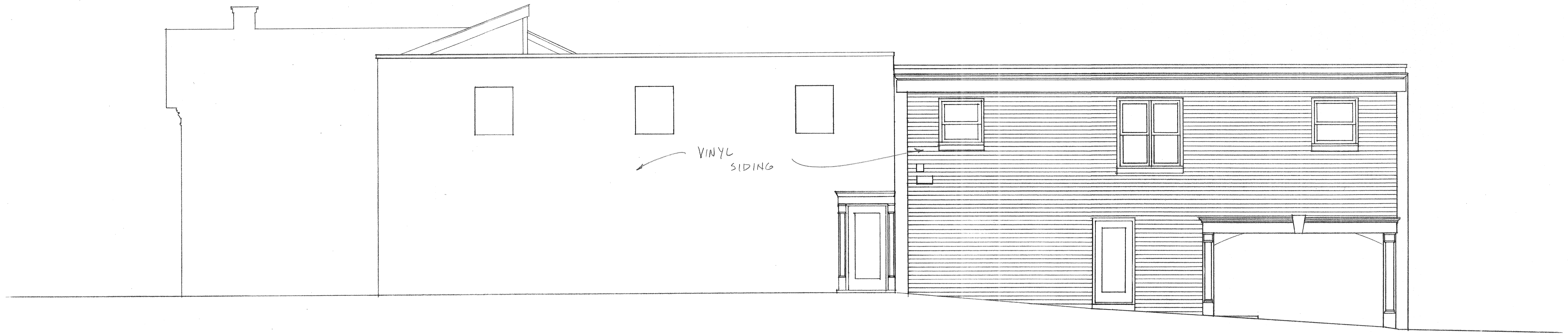


EXISTING NORTH ELEVATION 1/4" = 1'-0"

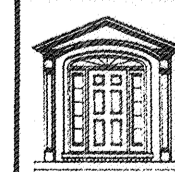


EXISTING WEST ELEVATION 1/4" = 1'-0"

 Ronald T. Haas & Associates, Inc. Wheaton, IL 60189 (630) 221-0240 architects	
REMODELING FOR MOSS FUNERAL HOME 100 S. THIRD ST. ST. CHARLES, IL	
project number: 1903 prepared by: RTH date: 5-24-19 sheet number:	3
■ EXIST. NORTH ELEVATION ■ EXIST. WEST ELEVATION	



EXISTING SOUTH ELEVATION 1/4"=1'-0"



Ronald T. Haas & Associates, Inc.

Wheaton, IL 60189 (630) 221-0240

architects

REMODELING FOR
 MOSS FUNERAL HOME
 100 S. THIRD ST. ST. CHARLES, IL

project number: 1903

prepared by: RTH

date: 5-24-19

■ EXIST. SOUTH ELEVATION

sheet number:

4