



AGENDA ITEM EXECUTIVE SUMMARY

Agenda Item number: 4b

Title:

Presentation of a Concept Layout for the First Street Riverwalk and East Plaza

Presenter:

Russell Colby

Meeting: Planning & Development Committee

Date: November 12, 2018

Proposed Cost: TBD

Budgeted Amount: \$1,300,000
(approximate)

Not Budgeted: ☐

First Street Building #2 (Riverloft) is currently under construction. Per the Redevelopment Agreement for the project, the City is to complete improvement of the remaining bi-level Riverwalk and East Plaza at the time of completion of Building #2, which is expected by late summer 2019.

Staff has developed the attached conceptual layout for the Riverwalk and East Plaza improvements and is presenting the plan for feedback. The final plans will be brought back for approval at a later date.

The Conceptual Layout generally continues the same design theme as the completed Riverwalk improvement along Building #3.

Significant features of the plan:

- Along the Riverwalk, curvilinear planting islands with integrated seating.
- For the East Plaza, a larger central open space for events or performances.
- Use of consistent decorative lighting, railings, brick paver patterns and accents.
- A green edge/buffer as an interim condition for potential future connection/transition to the vacant parcel to the north (former Manor lot- not owned by the City).
- Opportunities for fixed and interactive public art exhibits/displays .

Plan Commission reviewed the concept on 10/16/18 and primarily provided feedback on details of the plans that will be addressed in the final design:

- Consider how the East Plaza aligns geometrically with the existing West Plaza.
- Importance of pedestrian connections/routes/crossings.
- Importance of lighting, use of decorative fixtures, accent lighting; wall lighting for lower walk
- Potential for a water feature or other central focal point at the East Plaza stairs
- Shift performance structure to the south to be more centrally located in the plaza.
- Use of plants other than perennials for year round appearance; consider movable planters.
- Questions about grading within the plaza, building finished floor level, and transitions to the Riverwalk.

At the Plan Commission meeting, the Downtown St. Charles Partnership presented concepts for public art installations. An excerpt of the presentation materials is attached.

Attachments *(please list):*

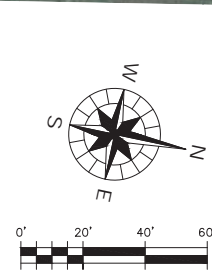
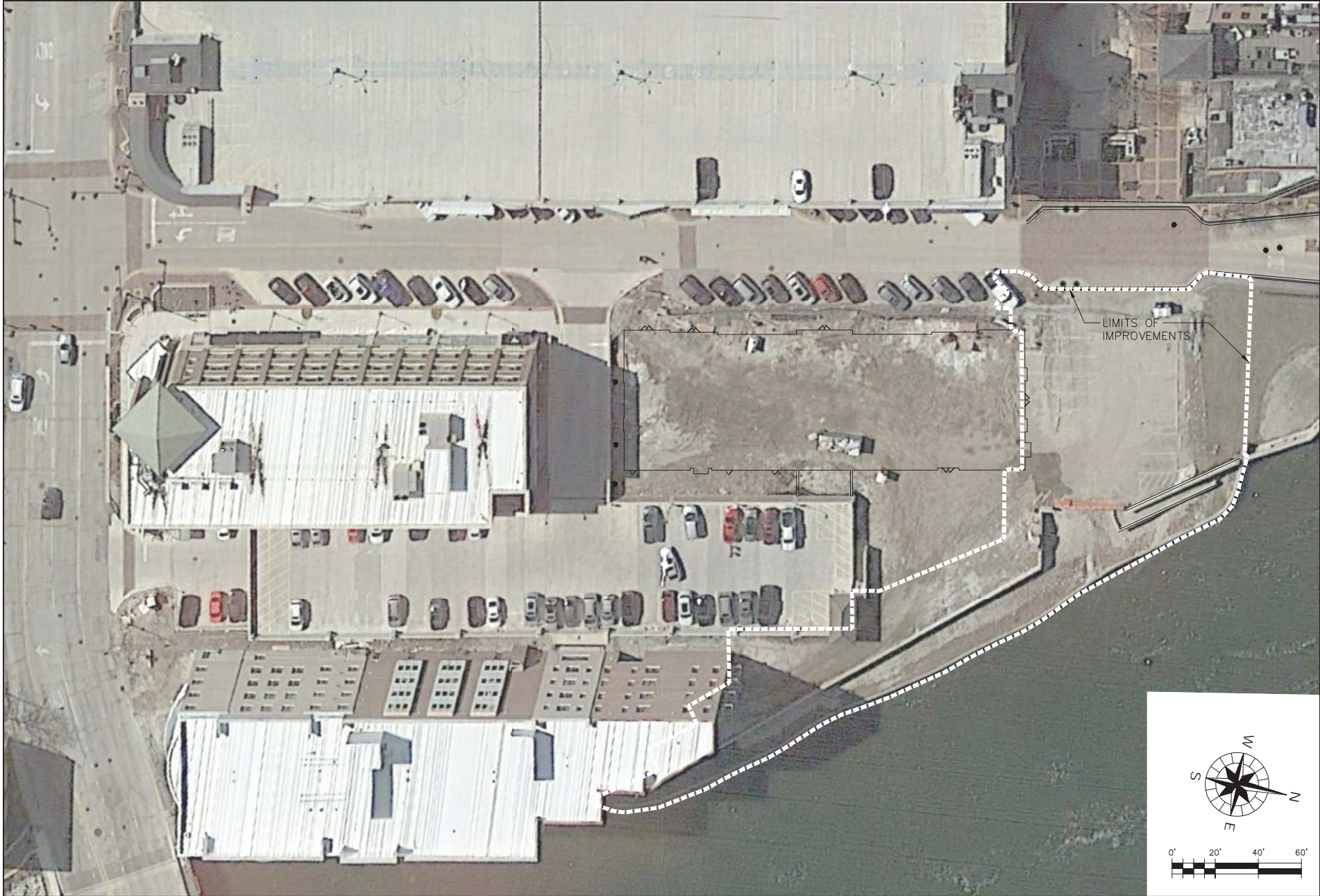
Aerial photos, Concept layout, Slides from DSCP

Recommendation/Suggested Action *(briefly explain):*

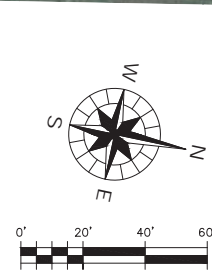
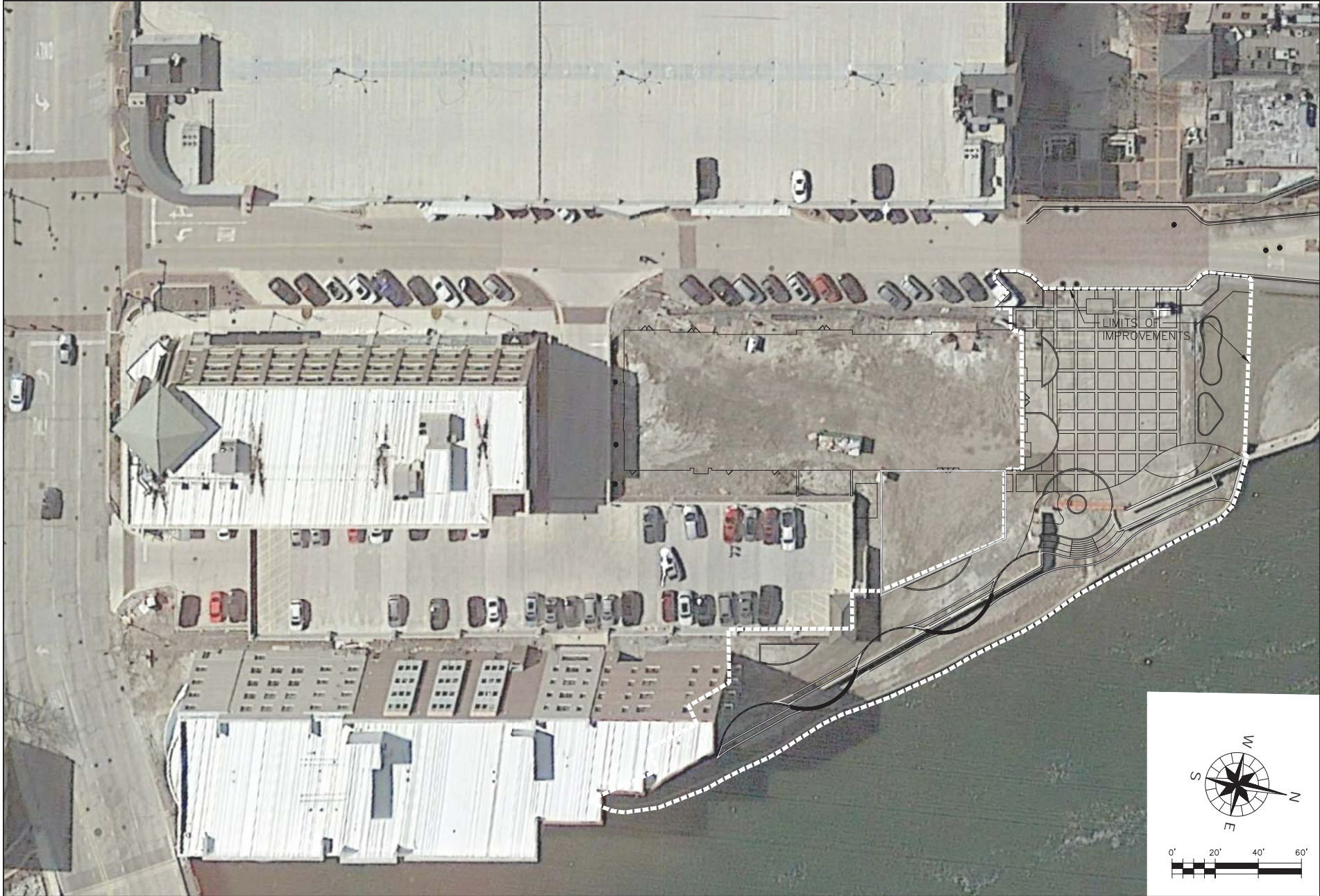
Provide feedback and comments on the Concept Layout.



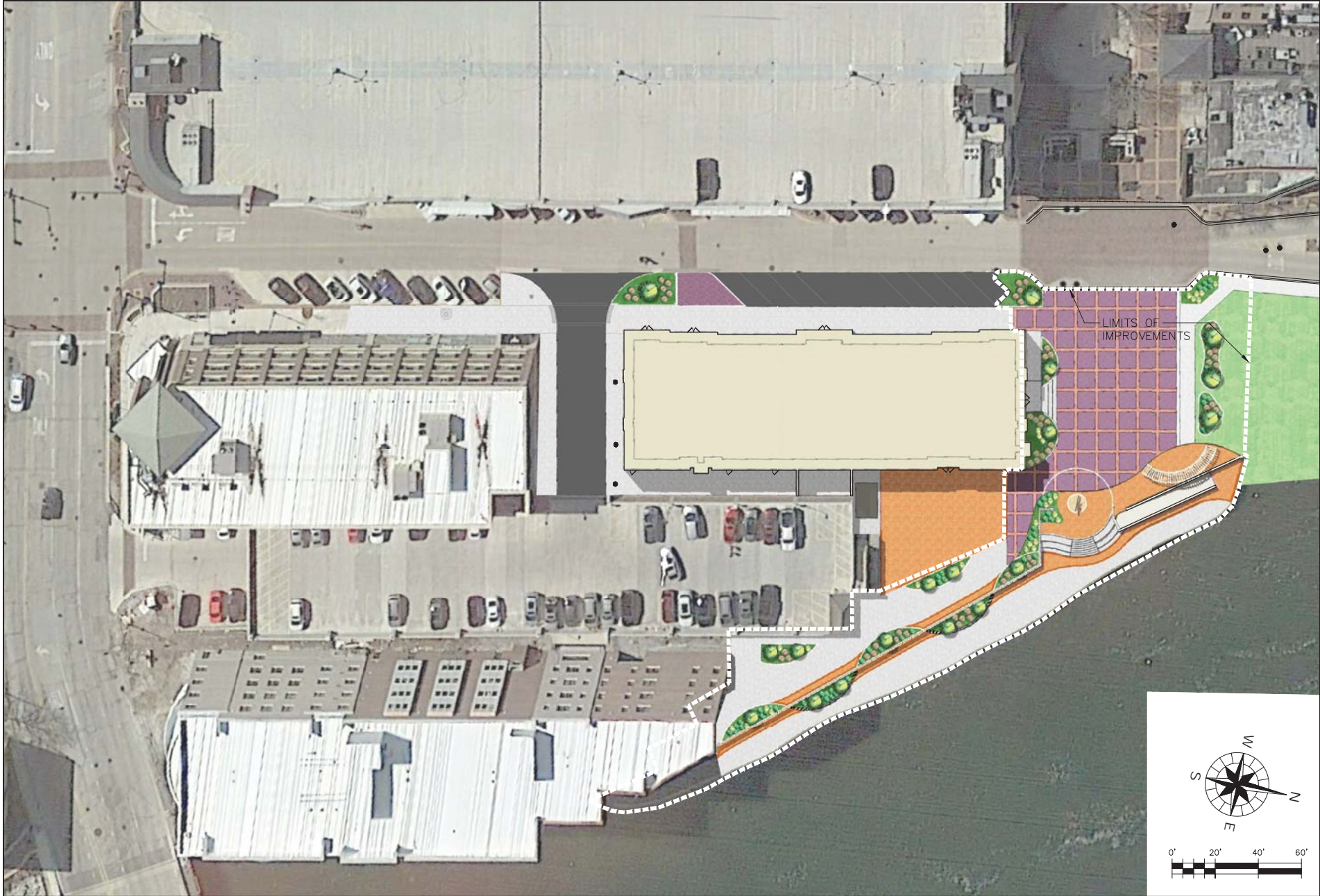




PROJECT NO. 180254		DATE : 10/26/2018		DRAWING NO. EX		SHEET:		1 OF 3	
 WBK ENGINEERING, LLC 115 WEST MAIN STREET SUITE 201 ST. CHARLES, ILLINOIS 60174 (630) 443-7755		CLIENT :		CITY OF ST. CHARLES 2 E. MAIN STREET ST. CHARLES, IL 60174		TITLE:		ST. CHARLES RIVERWALK	
						DSGN.		ARR	
						DWG.		ARR	
						CHGD.		ARR	
						SCALE: 1" = 20'			
				</					



PROJECT NO. 180254		CLIENT :		CITY OF ST. CHARLES 2 E. MAIN STREET ST. CHARLES, IL 60174				TITLE:		ST. CHARLES RIVERWALK	
DATE : 10/26/2018		WBK ENGINEERING, LLC 115 WEST MAIN STREET SUITE 201 ST. CHARLES, ILLINOIS 60174 (630) 443-7755									
DRAWING NO. EX								DSGN.		DSGN.	
SHEET:								DWG.		DWG.	
2 OF 3								CHRD.		CHRD.	
								SCALE: N/A			



WBK engineering WBK ENGINEERING, LLC 115 WEST MAIN STREET SUITE 201 ST. CHARLES, ILLINOIS 60174 (630) 443-7755		PROJECT NO. 180254 DATE : 10/26/2018 DRAWING NO. EX SHEET:		CLIENT : CITY OF ST. CHARLES 2 E. MAIN STREET ST. CHARLES, IL 60174		TITLE : ST. CHARLES RIVERWALK EAST PLAZA CONCEPT PLAN	
DESIGN	DATE	DESIGN	DATE	DESIGN	DATE	DESIGN	DATE
DRAWN	DATE	DRAWN	DATE	DRAWN	DATE	DRAWN	DATE
CHECKED	DATE	CHECKED	DATE	CHECKED	DATE	CHECKED	DATE
SCALE	DATE	SCALE	DATE	SCALE	DATE	SCALE	DATE
NATURE OF REVISION		NATURE OF REVISION		NATURE OF REVISION		NATURE OF REVISION	
NO.		NO.		NO.		NO.	
DATE		DATE		DATE		DATE	



Landscape Planter
typical

ADA Ramp
along building facade

Landscape Planter
coordinated with
door location

PROPOSED BUILDING
(UNDER CONSTRUCTION)

Public Art
with landscape planter

Transformer
maintain access

Outdoor Patio
with movable fencing

Performance Area
with open air structure

Existing ADA Ramp
access to lower riverwalk

Steps
with tiered seating area
for river views

Existing Wall
use existing wall and tiered
seating to transition grade

PARKING GARAGE
(EXISTING)

Landscape Planter
typical

Landscape Planter
typical

EXISTING
BUILDING #3

Upper Level Riverwalk
Lower Level Riverwalk

Landscape Planter
with integrated bench
typical

Steps
with tiered seating area
for river views



NOT TO SCALE

FIRST STREET RIVERWALK & EAST PLAZA

CITY OF ST. CHARLES

CLIENT:

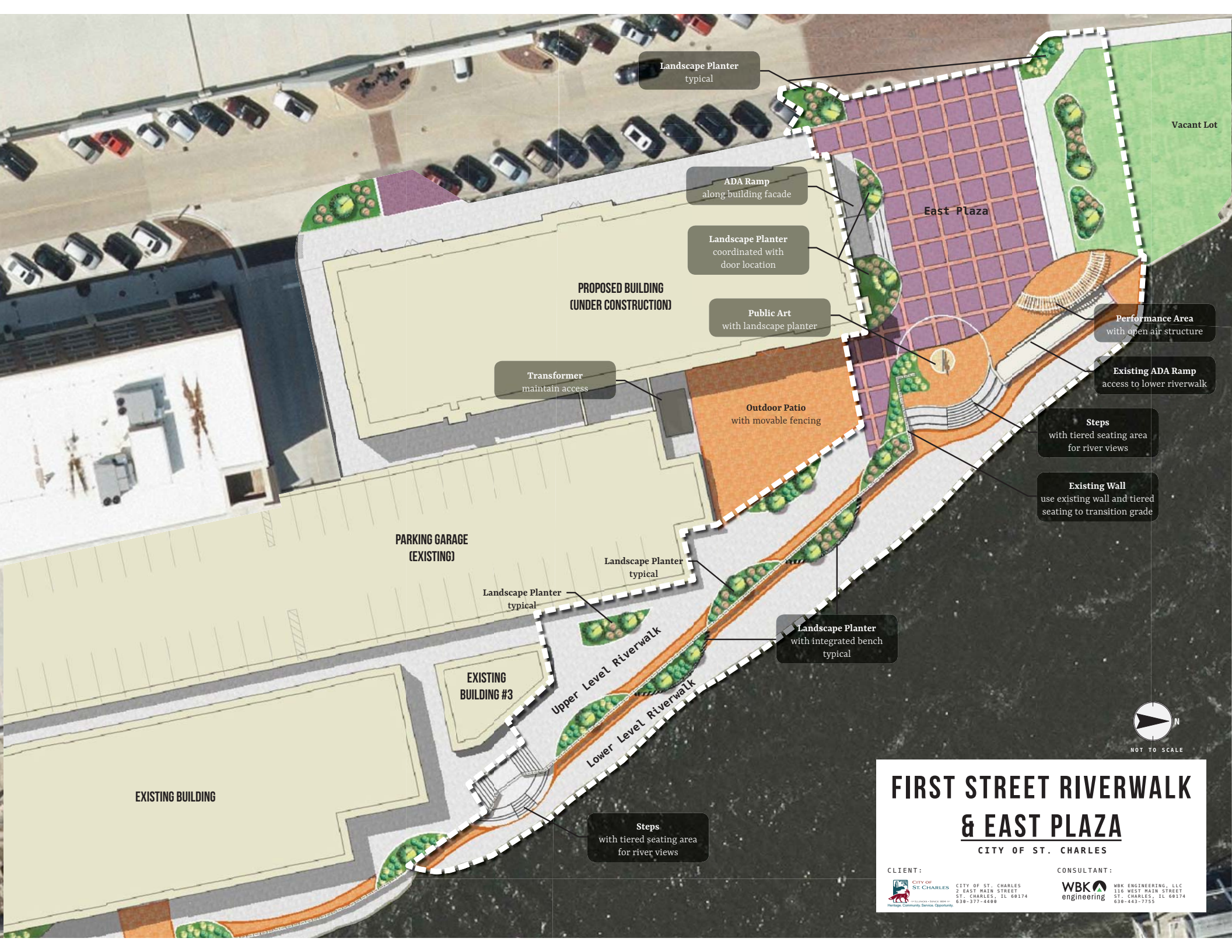


CITY OF ST. CHARLES
2 EAST MAIN STREET
ST. CHARLES, IL 60174
630-377-4400

CONSULTANT:



WBK ENGINEERING, LLC
116 WEST MAIN STREET
ST. CHARLES, IL 60174
630-443-7755



Landscape Planter
typical

ADA Ramp
along building facade

Landscape Planter
coordinated with
door location

Public Art
with landscape planter

PROPOSED BUILDING
(UNDER CONSTRUCTION)

Transformer
maintain access

Outdoor Patio
with movable fencing

East Plaza

Performance Area
with open air structure

Existing ADA Ramp
access to lower riverwalk

Steps
with tiered seating area
for river views

Existing Wall
use existing wall and tiered
seating to transition grade

PARKING GARAGE
(EXISTING)

Landscape Planter
typical

Landscape Planter
typical

EXISTING
BUILDING #3

Upper Level Riverwalk
Lower Level Riverwalk

Landscape Planter
with integrated bench
typical

Steps
with tiered seating area
for river views

EXISTING BUILDING



NOT TO SCALE

FIRST STREET RIVERWALK & EAST PLAZA

CITY OF ST. CHARLES

CLIENT:



CITY OF ST. CHARLES
2 EAST MAIN STREET
ST. CHARLES, IL 60174
630-377-4400

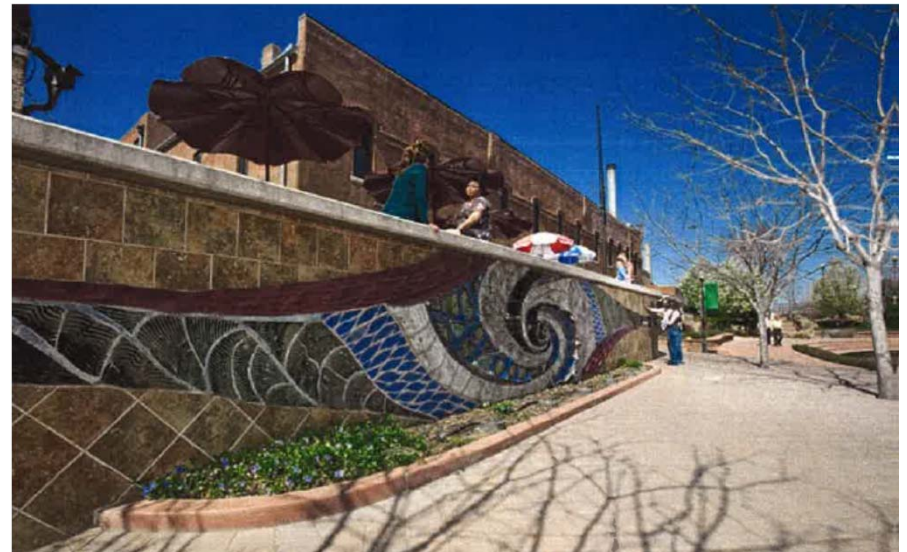
CONSULTANT:



WBK ENGINEERING, LLC
116 WEST MAIN STREET
ST. CHARLES, IL 60174
630-443-7755

DSCP Slide Excerpts

Along the 6 foot wall along the river





Design esthetics along Riverwalk

On-trend ideas or timeless art pieces
to create modern social space.



Interactive Public Art

Brings all demographics out to see interactive art

