



AGENDA ITEM EXECUTIVE SUMMARY

Agenda Item number: 5.a

Title:

Recommendation to Amend Title 10 “Vehicles and Traffic” of the City Ordinance

Presenter:

Police Chief Keegan

Meeting: Government Services Committee

Date: September 24, 2018

Proposed Cost: N/A

Budgeted Amount: \$

Not Budgeted:

Executive Summary *(if not budgeted please explain):*

In an effort to bring the City Ordinance up to date to reflect what is currently posted in City of St. Charles downtown parking lots and decks, the Police Department recommends the attached revisions be made to Title 10 “Vehicles and Traffic”, Chapter 10.40 “Stopping, Standing and Parking”, Section 10.40.010 “Parking Time Limits” of the City of St. Charles City Code.

Included in these recommended amendments are several parking lot and deck exhibits. Please see the attached documents which highlight these requested modifications.

Attachments *(please list):*

* Ordinance and Exhibits with proposed changes

Recommendation/Suggested Action *(briefly explain):*

Recommendation to approve updates to Title 10 “Vehicles and Traffic” of the City Ordinance.

Proposed changes to City Code 10.40.010:

Note: these proposed changes reflect the way in which City lots are currently signed.

10.40.010 – Parking time limits

- A. City-owned, -leased, or -operated parking lots:
1. It is unlawful for any person to cause, allow, or permit any vehicle to be parked in any City-owned, -leased, or -operated parking lot for a period of time exceeding the time limits set forth in Exhibits A through ~~WZ~~ during the period of time between the hours set forth in Municipal Parking Lot Exhibits A through ~~WZ~~.
 2. It is unlawful for any person to cause, allow, or permit any vehicle to be parked in a parking space designated as a leased, permitted, or reserved parking space during the period of time between the hours set forth for leased, permitted, or reserved parking space in each City-owned, -leased, or -operated parking lot in Municipal Parking Lot Exhibits A through ~~WZ~~. (Ord. 2005-M-2 § 1; Ord. 2004-M-17 § 1; Ord. 2003-M-26 § 1; Ord. 1998-M-21 § 1; Ord. 1998-M-14 § 1; Ord. 1997-M-41 § 1; Ord. 1996-M-28 § 1; Ord. 1995-M-35 § 1; Ord. 1991-M-54 § 1; Ord. 1987-M-61 § 1; Ord. 1987-M-29 § 1.)

Please see attached maps for additional changes. If approved, these changes will be formally made to the schematics for the Government Services meeting.

Recommended map changes include the following exhibits:

PL-I – Municipal Parking Lot I; Plaza building, first level – see proposed changes

PL-I – Municipal Parking Lot I; Plaza building, second level – no changes; remain the same

PL-I – Municipal Parking Lot I; Plaza building, third level – no changes; remain the same

PL-I – Municipal Parking Lot I; Plaza building, fourth level – see proposed changes

PL-I – Municipal Parking Lot I; Plaza building, fifth level – see proposed changes

Remove existing Exhibit PL-V – Municipal Parking Lot V diagram and replace with proposed new Exhibit PL-V – Municipal Parking Lot V (attached).

Add the following Exhibits (parking lot maps) to City Code:

Exhibit PL-V – Municipal Parking Lot V

Exhibit PL-X – Municipal Parking Lot X

Exhibit PL-Y – Municipal Parking Lot Y

Exhibit PL-Z – Municipal Parking Lot Z

City of St. Charles, Illinois
Ordinance No. 2018-M-_____

**An Ordinance Amending Title 10 “Vehicles and Traffic”;
Chapter 10.40 “Stopping, Standing and Parking”; Section 10.40.010 “Parking Time
Limits” of the St. Charles Municipal Code**

BE IT ORDAINED by the City Council of the City of St. Charles, Kane and DuPage Counties, Illinois, as follows:

SECTION ONE: That Title 10, “Vehicles and Traffic,” Chapter 10.40, “Stopping, Standing and Parking”, Section 10.40.010, “Parking Time Limits”, of the St. Charles Municipal Code, be and is hereby amended as follows:

- A. City-owned, -leased, or -operated parking lots:
1. It is unlawful for any person to cause, allow, or permit any vehicle to be parked in any City-owned, -leased, or -operated parking lot for a period of time exceeding the time limits set forth in Exhibits A through Z during the period of time between the hours set forth in Municipal Parking Lot Exhibits A through Z.
 2. It is unlawful for any person to cause, allow, or permit any vehicle to be parked in a parking space designated as a leased, permitted, or reserved parking space during the period of time between the hours set forth for leased, permitted, or reserved parking space in each City-owned, -leased, or -operated parking lot in Municipal Parking Lot Exhibits A through Z.

SECTION TWO: That Title 10, “Vehicles and Traffic,” Chapter 10.40, “Stopping, Standing and Parking”, Section 10.40.010, “Parking Time Limits”, of the St. Charles Municipal Code, be and is hereby amended as follows:

Exhibits: Title 10 Chapter 40 PL-G thru Z Exhibits.pdf

SECTION THREE: That Title 10, “Vehicles and Traffic,” Chapter 10.40, “Stopping, Standing and Parking”, Section 10.40.010, “Parking Time Limits”, of the St. Charles Municipal Code, be and is hereby amended as follows:

That Exhibit PL-I – Municipal Parking Lot I; Plaza building, first level be removed and replaced with the amended PL-I – Municipal Parking Lot I; Plaza building, first level.

SECTION FOUR: That Title 10, “Vehicles and Traffic,” Chapter 10.40, “Stopping, Standing and Parking”, Section 10.40.010, “Parking Time Limits”, of the St. Charles Municipal Code, be and is hereby amended as follows:

That Exhibit PL-I – Municipal Parking Lot I; Plaza building, fourth level be removed and replaced with the amended PL-I – Municipal Parking Lot I; Plaza building, fourth level.

SECTION FIVE: That Title 10, “Vehicles and Traffic,” Chapter 10.40, “Stopping, Standing and Parking”, Section 10.40.010, “Parking Time Limits”, of the St. Charles Municipal Code, be and is hereby amended as follows:

That Exhibit PL-I – Municipal Parking Lot I; Plaza building, fifth level be removed and replaced with the amended PL-I – Municipal Parking Lot I; Plaza building, fifth level.

SECTION SIX: That Title 10, “Vehicles and Traffic,” Chapter 10.40, “Stopping, Standing and Parking”, Section 10.40.010, “Parking Time Limits”, of the St. Charles Municipal Code, be and is hereby amended as follows:

That Exhibit PL-V – Municipal Parking Lot V, Indiana Street Parking Lot; be removed and replaced with the amended PL-V – Municipal Parking Lot V, Indiana Street Parking Lot.

SECTION SEVEN: That Title 10, “Vehicles and Traffic,” Chapter 10.40, “Stopping, Standing and Parking”, Section 10.40.010, “Parking Time Limits”, of the St. Charles Municipal Code, be and is hereby amended by adding the following:

Exhibit PL-X – Municipal Parking Lot X

Exhibit PL-Y – Municipal Parking Lot Y

Exhibit PL-Z – Municipal Parking Lot Z, Susan L. Klinkhamer Parking Deck

SECTION EIGHT: That after the adoption and approval hereof this Ordinance shall (i) be printed or published in book or pamphlet form, published by the authority of the Council, or (ii) within thirty (30) days after the adoption and approval hereof, be published in a newspaper published in and with a general circulation within the City of St. Charles.

SECTION NINE: This Ordinance shall be in full force and effect ten (10) days from and after its passage by a vote of the majority of the corporate authorities now holding office, approval and publication in the manner provided by law.

PRESENTED to the City Council of the city of St. Charles, Illinois, this _____ day of _____, 2018.

PASSED by the City Council of the city of St. Charles, Illinois, this _____ day of _____, 2018.

APPROVED by the Mayor of the city of St. Charles, Illinois, this _____ day of _____, 2018.

Raymond P. Rogina, Mayor

ATTEST:

City Clerk

COUNCIL VOTE:

Ayes: _____

Nays: _____

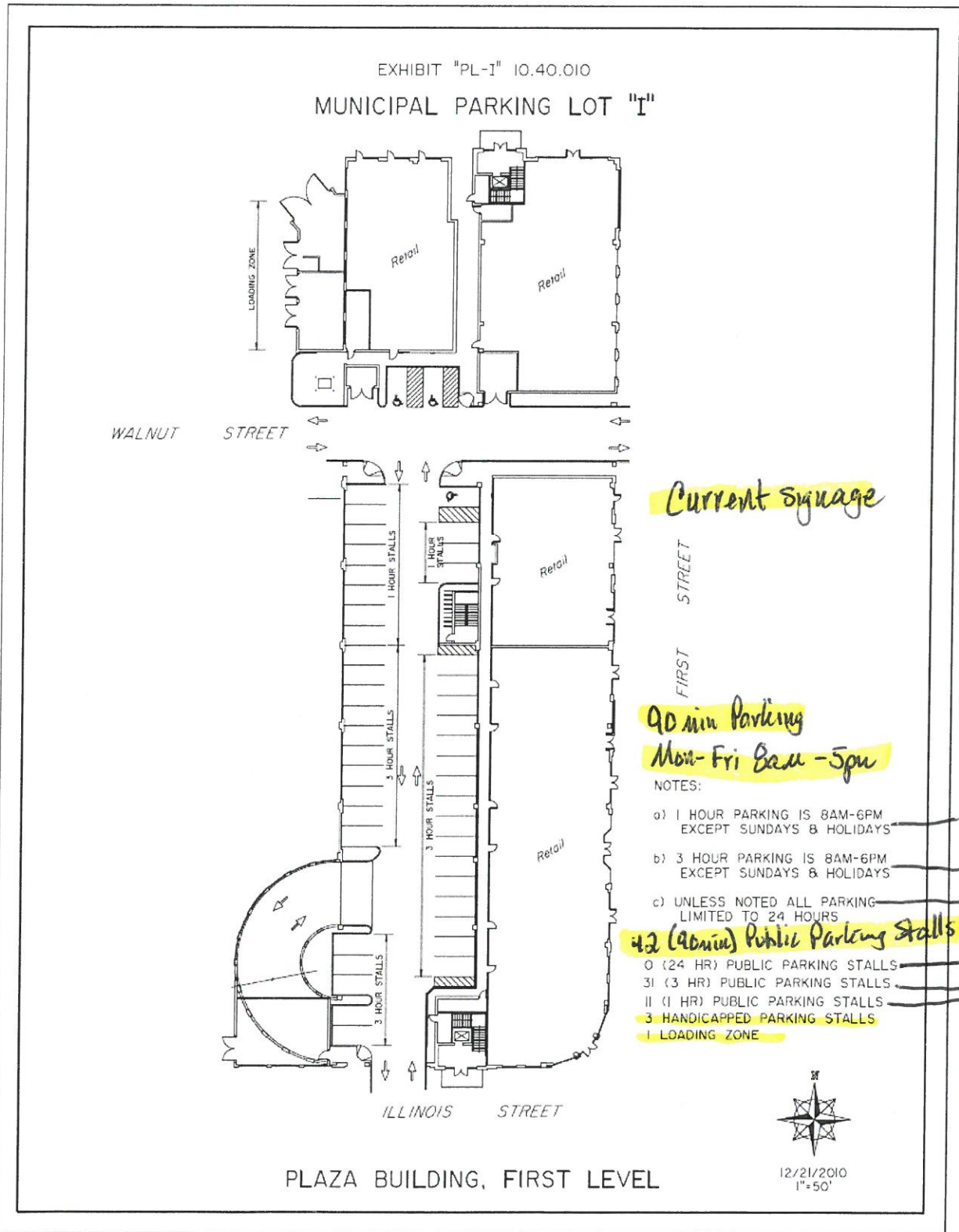
Absent: _____

APPROVED AS TO FORM:

City Attorney

DATE: _____

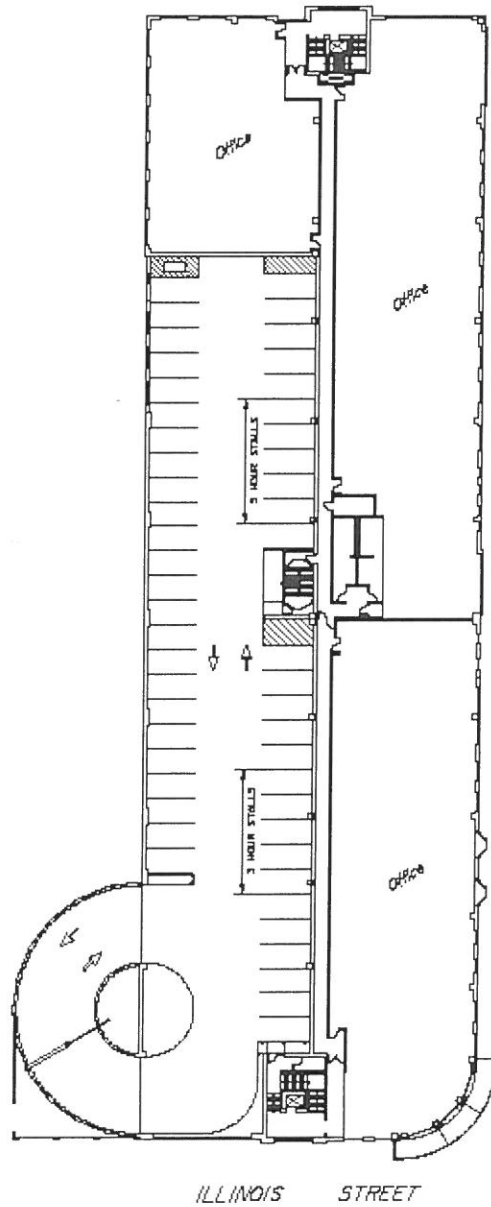
STOPPING, STANDING AND PARKING



(Ord. 2011-M-11 § 1; Ord. 2008-M-62 § 1; Ord. 2006-M-57 § 1; Ord. 2005-M-2 § 3; Ord. 2002-M-71 § 1; Ord. 1997-M-41 § 2.)

STOPPING, STANDING AND PARKING

EXHIBIT "PL-I" 10.40.010
MUNICIPAL PARKING LOT "I"



FIRST STREET

Sable

NOTE:

3 HOUR PARKING IS 8AM-6PM
EXCEPT SUNDAYS & HOLIDAYS

- 41 (24 HR) PUBLIC PARKING STALLS
- 10 (3 HR) PUBLIC PARKING STALLS
- 0 (1 HR) PUBLIC PARKING STALLS
- 0 HANDICAPPED PARKING STALLS

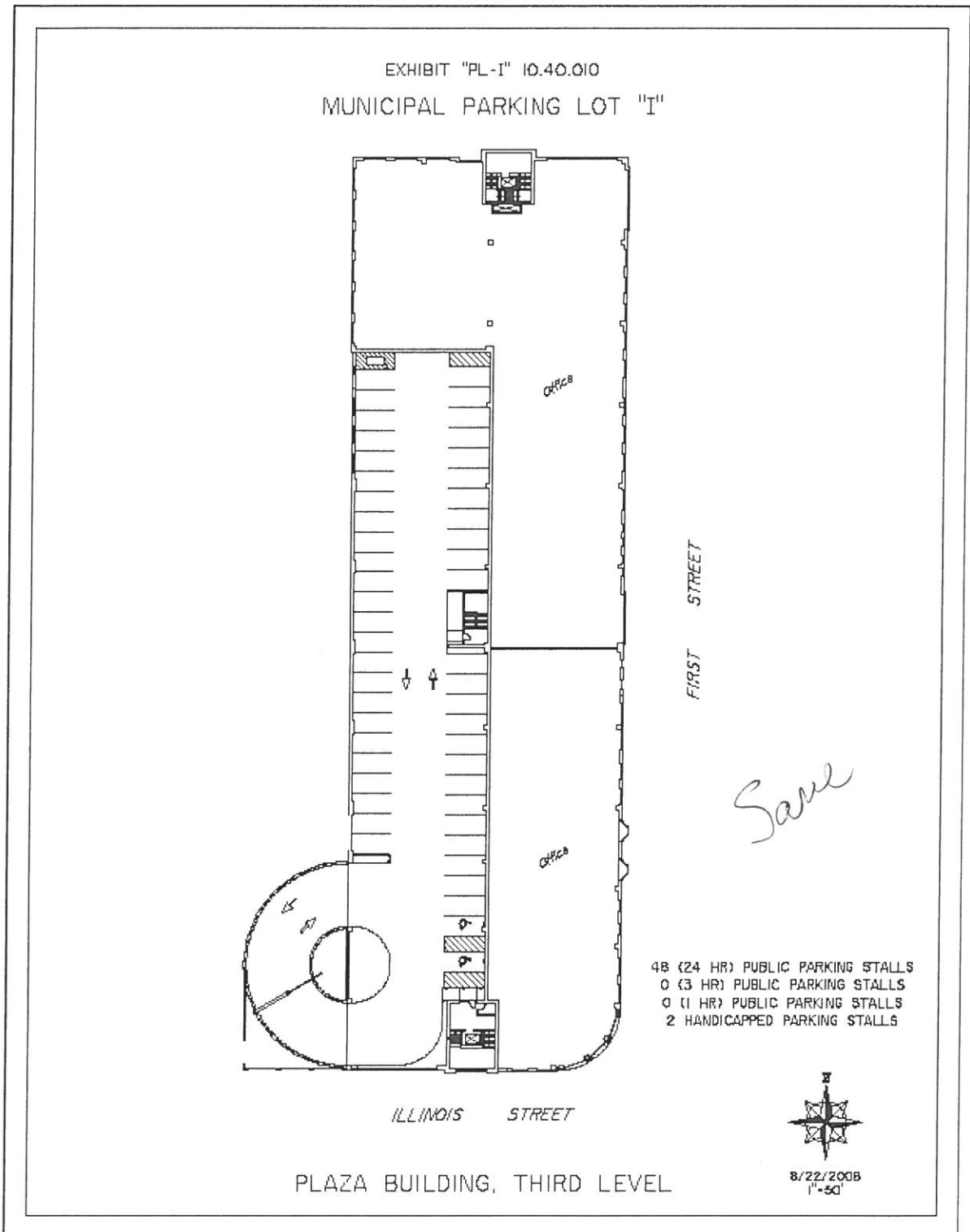


8/22/2008
1"=50'

PLAZA BUILDING, SECOND LEVEL

(Ord. 2008-M-62 § 1.)

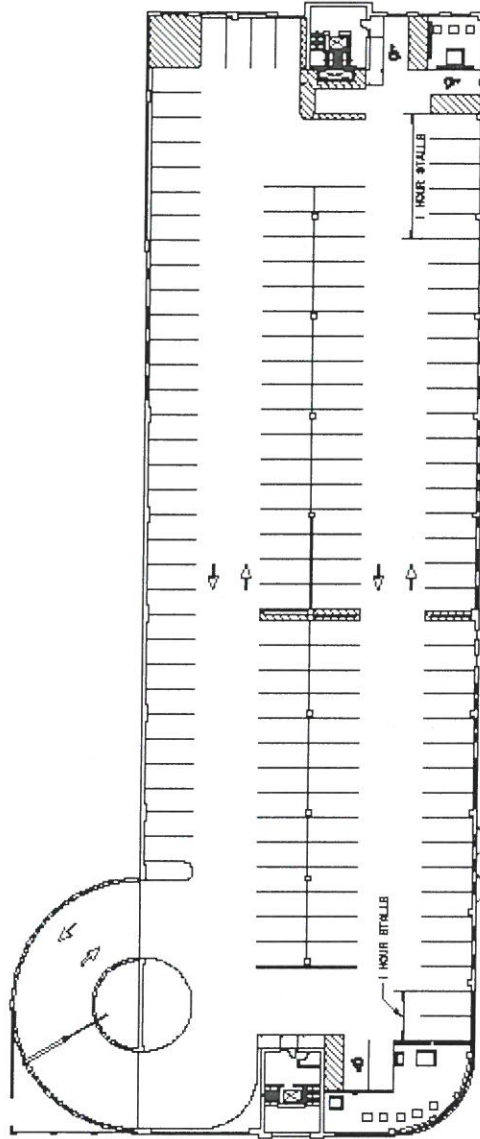
STOPPING, STANDING AND PARKING



(Ord. 2008-M-62 § 1.)

STOPPING, STANDING AND PARKING

EXHIBIT "PL-1" 10.40.010
MUNICIPAL PARKING LOT "I"



FIRST STREET

ILLINOIS STREET

Current Signage

NOTE:
1 HOUR PARKING 15 8AM-5PM
EXCEPT SUNDAYS & HOLIDAYS

- 120* (24 HR) PUBLIC PARKING STALLS
- 0 (3 HR) PUBLIC PARKING STALLS
- 7 (1 HR) PUBLIC PARKING STALLS
- 3 HANDICAPPED PARKING STALLS
- 2 (2HR) Electric Car only*

*OK
no
change
to this
section*



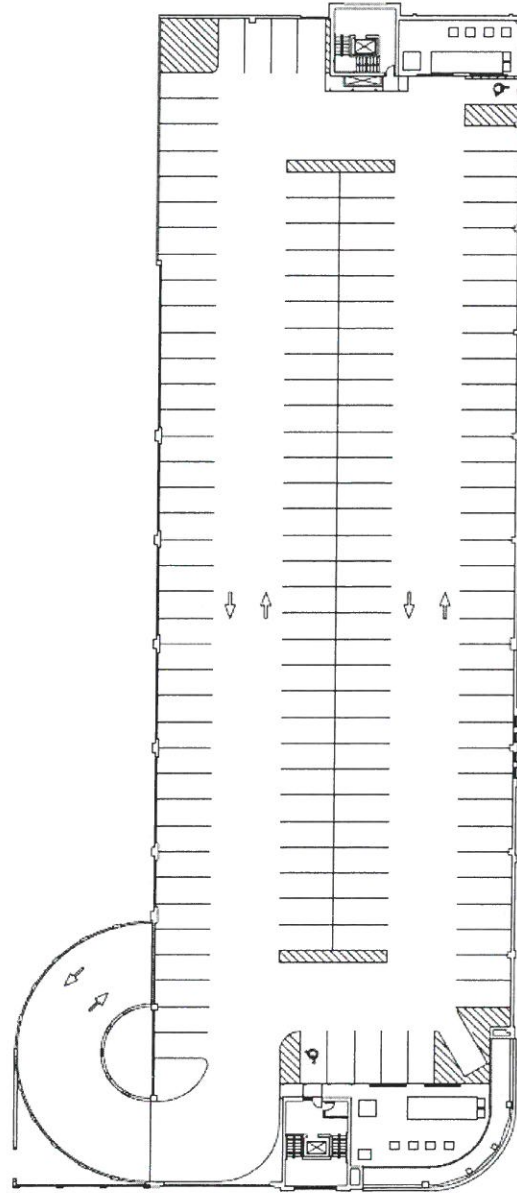
8/22/2008
1"=50'

PLAZA BUILDING, FORTH LEVEL

(Ord. 2008-M-62 § 1.)

STOPPING, STANDING AND PARKING

EXHIBIT "PL-I" 10.40.010
MUNICIPAL PARKING LOT "I"



FIRST STREET

Current Signage

NOTE:

- a) PARKING NOT TO EXCEED ~~SEVEN~~ **24 hours** ~~DAYS~~
- 141 PUBLIC PARKING STALLS
- 0 (3 HR) PUBLIC PARKING STALLS
- 0 (1 HR) PUBLIC PARKING STALLS
- 2 HANDICAPPED PARKING STALLS

"NO PARKING OVER 2" SNOW"
OR UNTIL CLEARED

ILLINOIS STREET



12/21/2010
1"=50'

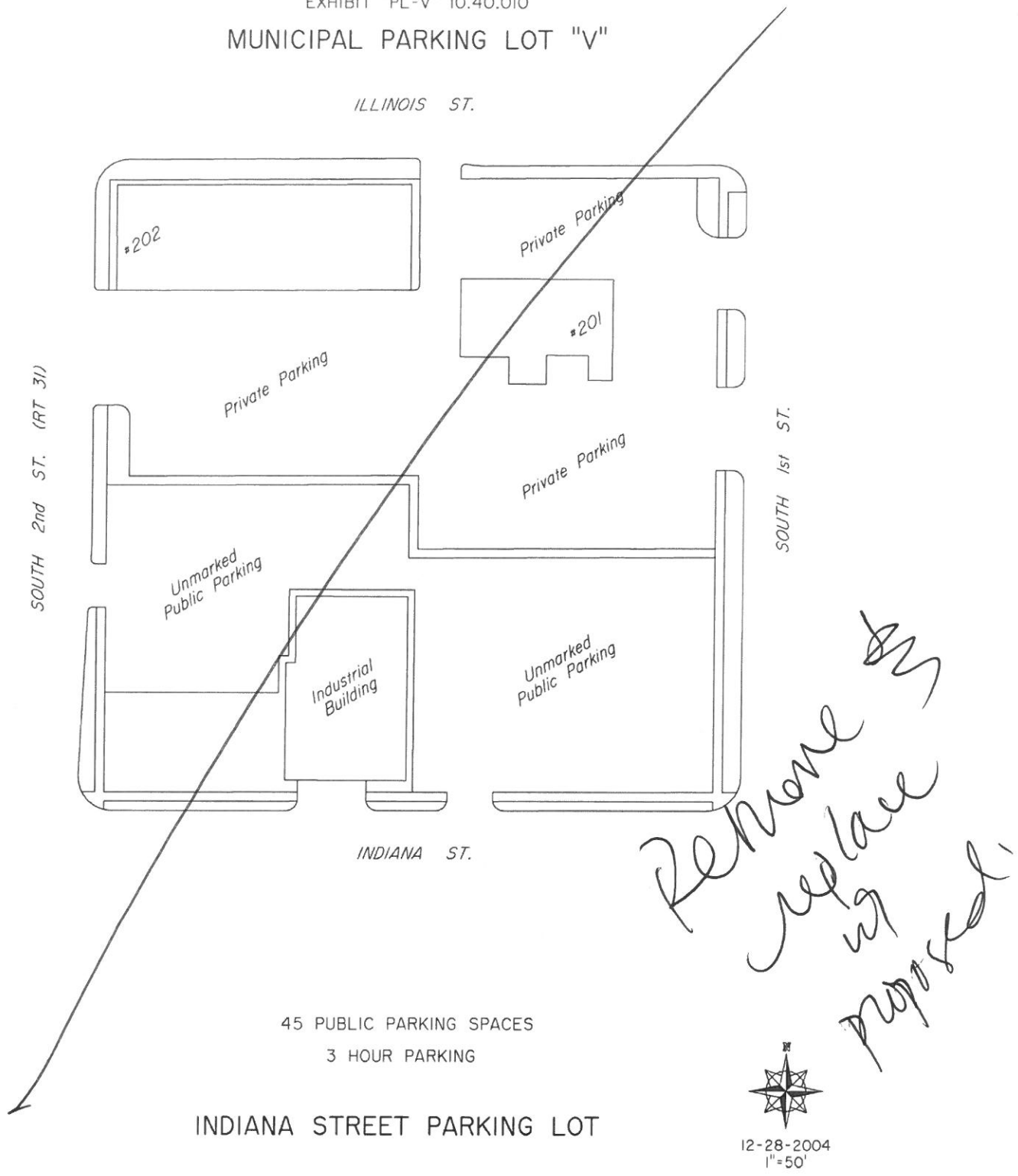
PLAZA BUILDING, FIFTH LEVEL

(Ord. 2011-M-11 § 1; Ord. 2008-M-62 § 1.)

STOPPING, STANDING AND PARKING

EXHIBIT "PL-V" 10.40.010

MUNICIPAL PARKING LOT "V"



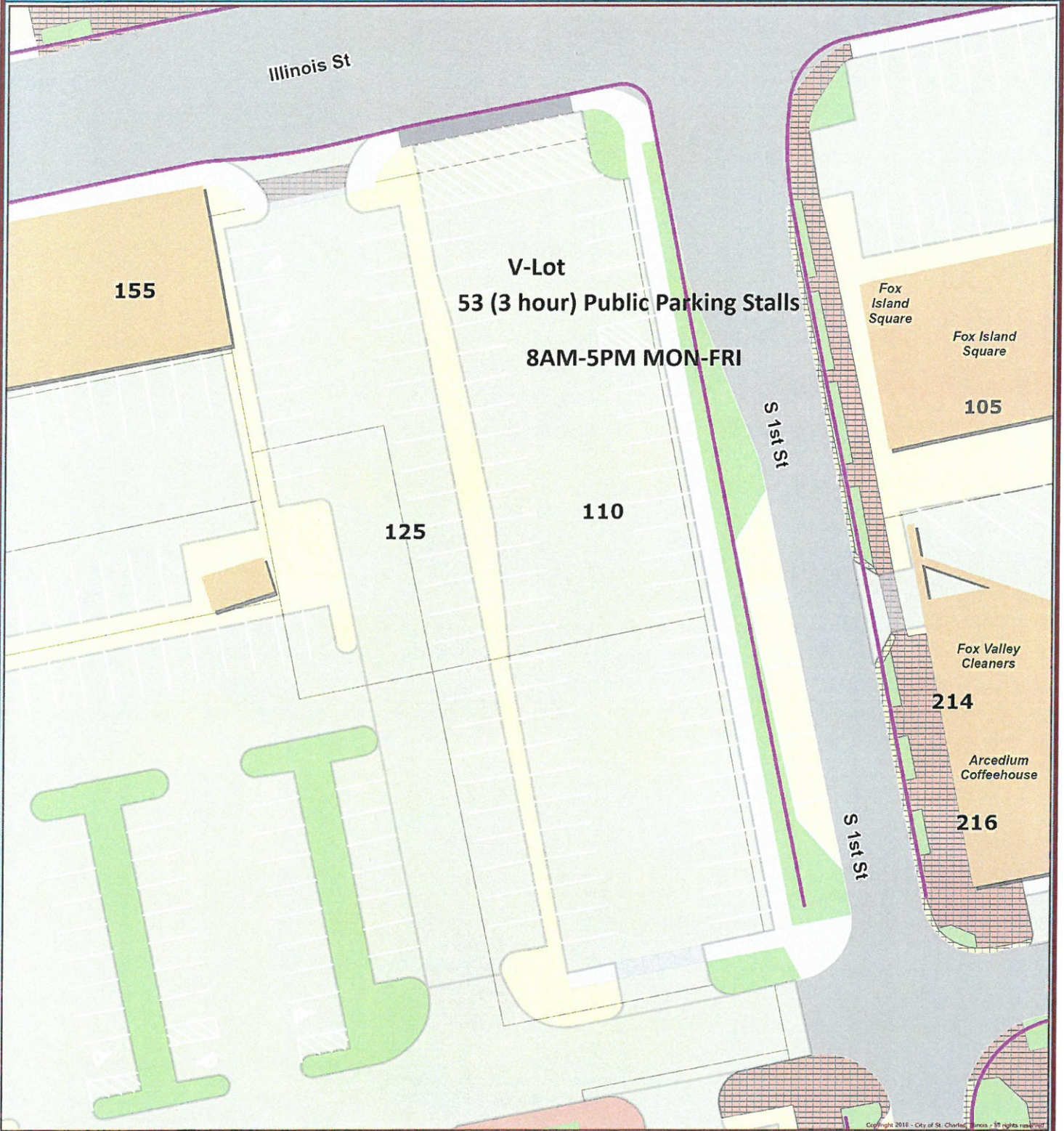
45 PUBLIC PARKING SPACES
3 HOUR PARKING

INDIANA STREET PARKING LOT



12-28-2004
1"=50'

(Ord. 2005-M-2 § 3; Ord. 2003-M-26 § 2.)



Copyright 2018 - City of St. Charles, Illinois - All rights reserved.



Data Source:
City of St. Charles, Illinois
Kane County, Illinois
DuPage County, Illinois
Coordinate System: Illinois State Plane East
Projection: Transverse Mercator
North American Datum 1983
Printed on: September 12, 2018 04:56 PM

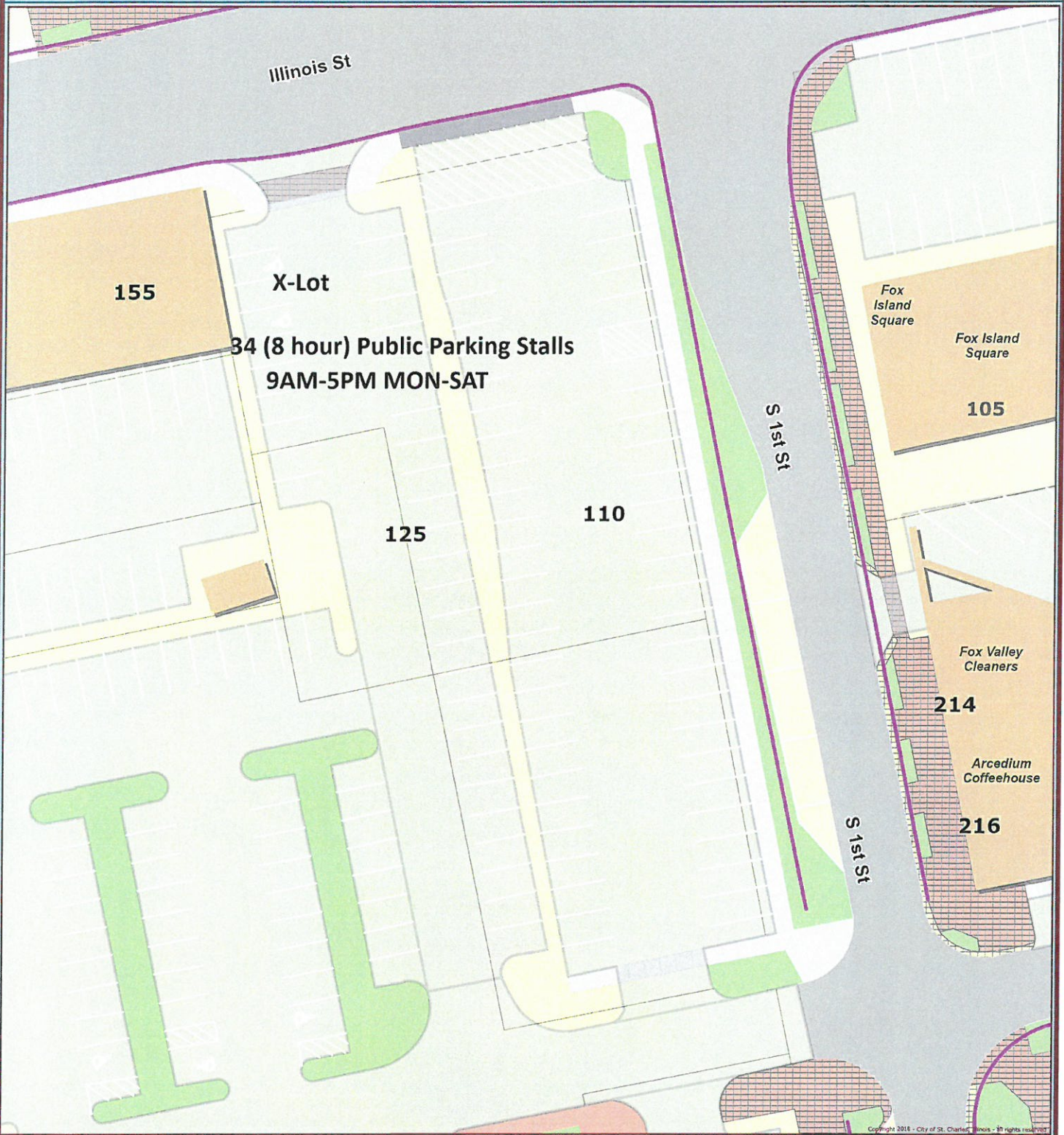


0 21 42 Feet

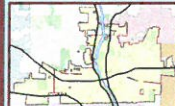
Municipal Parking Lot "V"

This work was created for planning purposes only and is provided as is, without warranty of any kind, either expressed or implied. The information represented may contain proprietary and confidential property of the City of St. Charles, Illinois. Under United States Copyright protection laws you may not use, reproduce, or distribute any part of this document without prior written permission. To obtain written permission please contact: The City of St. Charles at Two East Main Street, St. Charles, IL 60174.

RAYMOND ROGINA



Copyright 2016 - City of St. Charles, Illinois - All rights reserved.



Data Source:
 City of St. Charles, Illinois
 Kane County, Illinois
 DuPage County, Illinois
 Coordinate System: Illinois State Plane East
 Projection: Transverse Mercator
 North American Datum 1983
 Printed on: September 12, 2018 04:59 PM



0 21 42 Feet

Municipal Parking Lot "X"

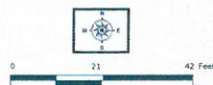
This work was created for planning purposes only and is provided as is, without warranty of any kind, either expressed or implied. The information represented may contain proprietary and confidential property of the City of St. Charles, Illinois. Under United States Copyright protection laws you may not use, reproduce, or distribute any part of this document without prior written permission. To obtain written permission please contact the City of St. Charles at Two East Main Street, St. Charles, IL 60174.



Copyright © 2018 - City of St. Charles, Illinois - all rights reserved.

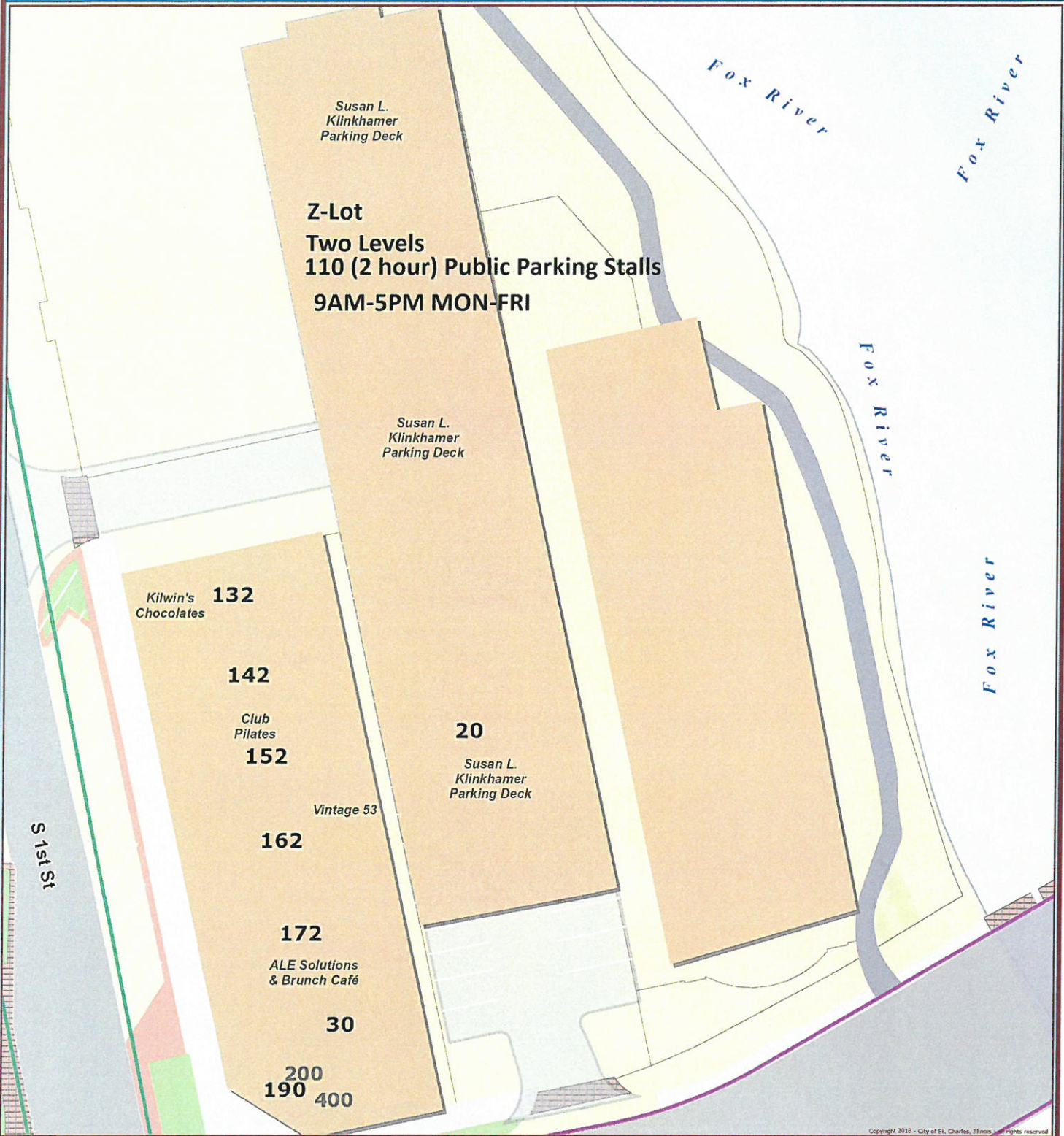


Data Source:
City of St. Charles, Illinois
Kane County, Illinois
DuPage County, Illinois
Coordinate System: Illinois State Plane East
Projection: Transverse Mercator
North American Datum 1983
Printed on: September 12, 2018 05:03 PM



Municipal Parking Lot "Y"

This work was created for planning purposes only and is provided as is, without warranty of any kind, either expressed or implied. The information represented may contain proprietary and confidential property of the City of St. Charles, Illinois. Under United States Copyright protection laws you may not use, reproduce, or distribute any part of this document without prior written permission. To obtain written permission please contact the City of St. Charles at Two East Main Street, St. Charles, IL 60174.



Copyright 2018 - City of St. Charles, Illinois. All rights reserved.



Data Source:
City of St. Charles, Illinois
Kane County, Illinois
DuPage County, Illinois
Coordinate System: Illinois State Plane East
Projection: Transverse Mercator
North American Datum 1983
Printed on: September 12, 2018 05:10 PM

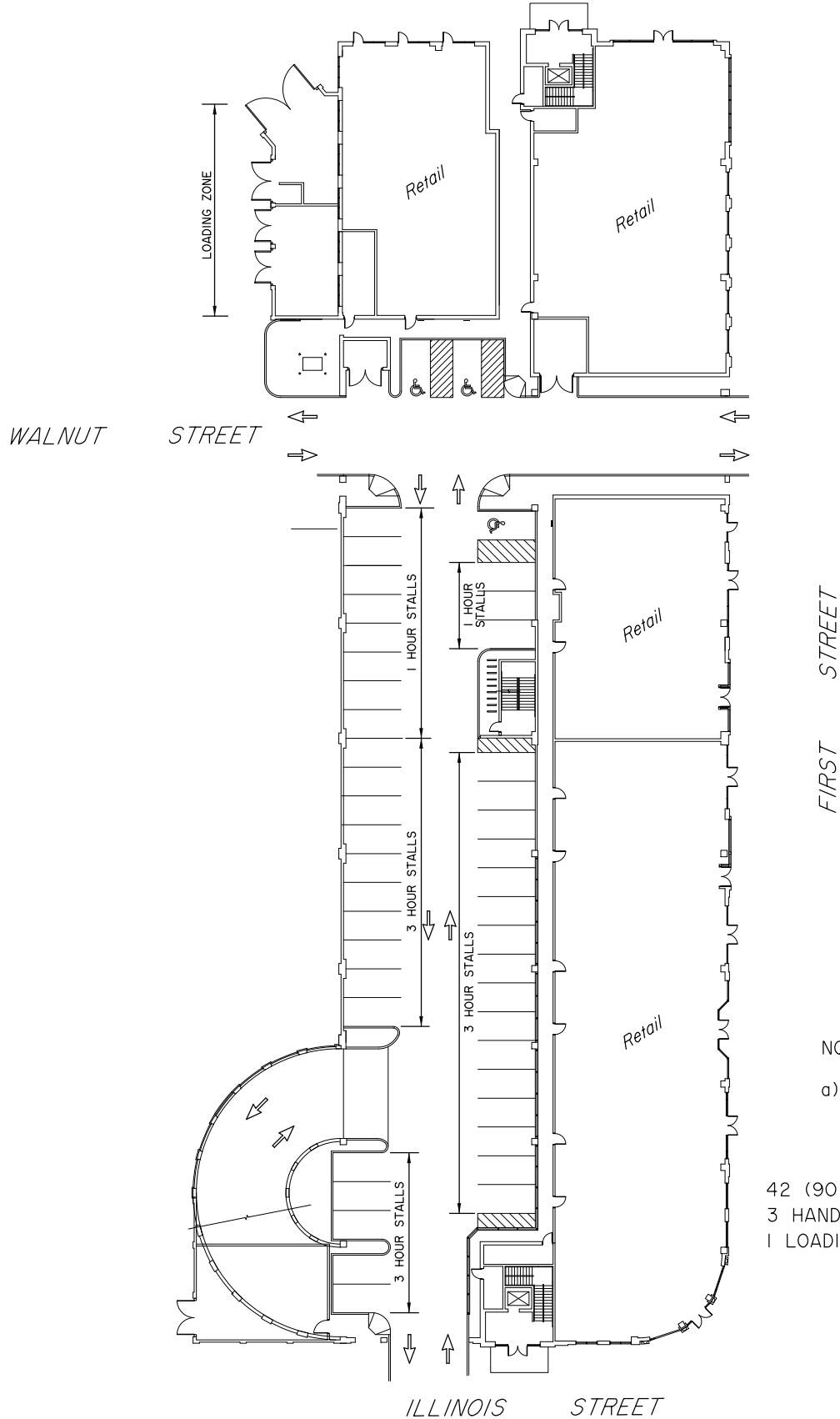


Municipal Parking Lot "Z"

This work was created for planning purposes only and is provided as is, without warranty of any kind, either expressed or implied. The information represented may contain proprietary and confidential property of the City of St. Charles, Illinois. Under United States Copyright protection laws you may not use, reproduce, or distribute any part of this document without prior written permission. To obtain written permission please contact the City of St. Charles at Two East Main Street, St. Charles, IL 60174.

EXHIBIT "PL-I" 10.40.010

MUNICIPAL PARKING LOT "I"



NOTE:

a) 90 MINUTE PARKING
8AM-5PM, MON-FRI

42 (90 MIN) PUBLIC PARKING STALLS
3 HANDICAPPED PARKING STALLS
1 LOADING ZONE

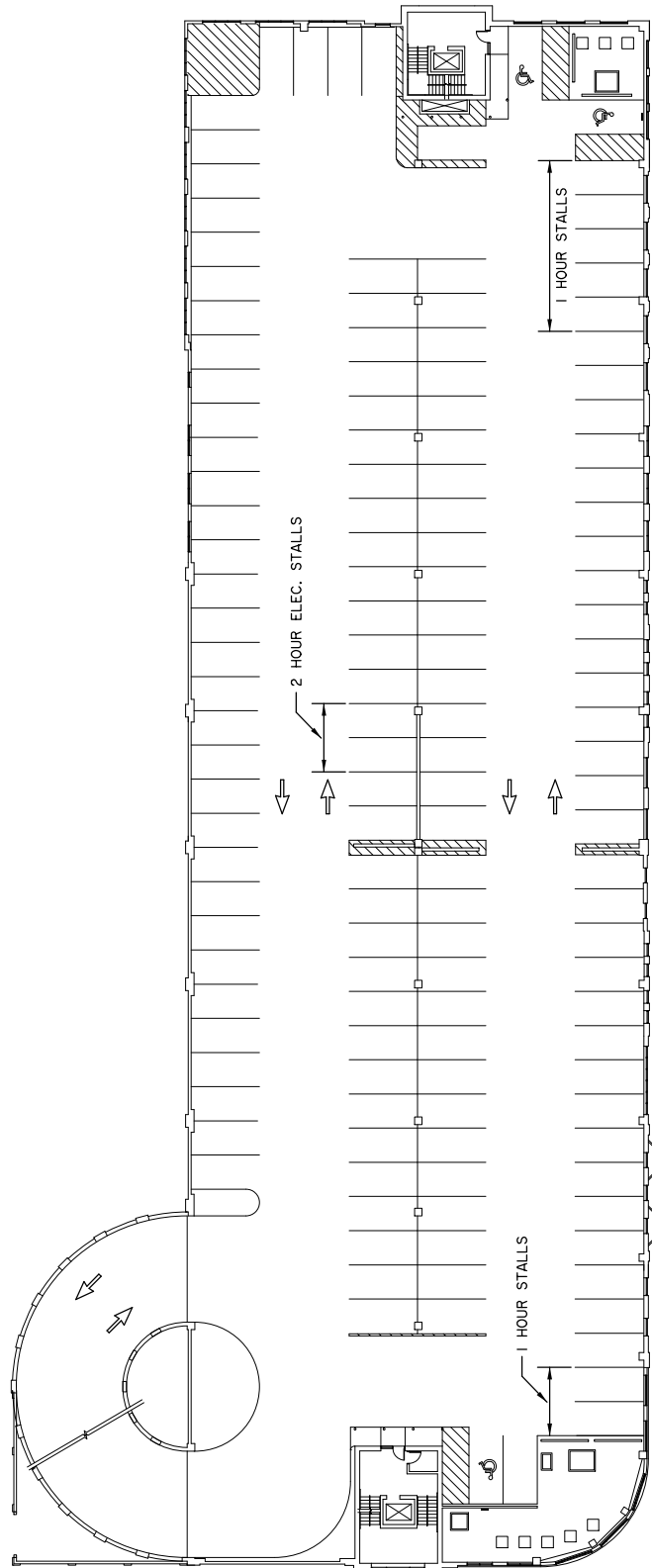


9/17/2018
1" = 50'

PLAZA BUILDING, FIRST LEVEL

EXHIBIT "PL-I" 10.40.010

MUNICIPAL PARKING LOT "I"



FIRST STREET

ILLINOIS STREET

NOTE:

a) 1 HOUR PARKING IS 8AM-6PM EXCEPT SUNDAYS & HOLIDAYS

- 128 (24 HR) PUBLIC PARKING STALLS
- 7 (1 HR) PUBLIC PARKING STALLS
- 3 HANDICAPPED PARKING STALLS
- 2 (2 HR) ELECTRIC CAR ONLY

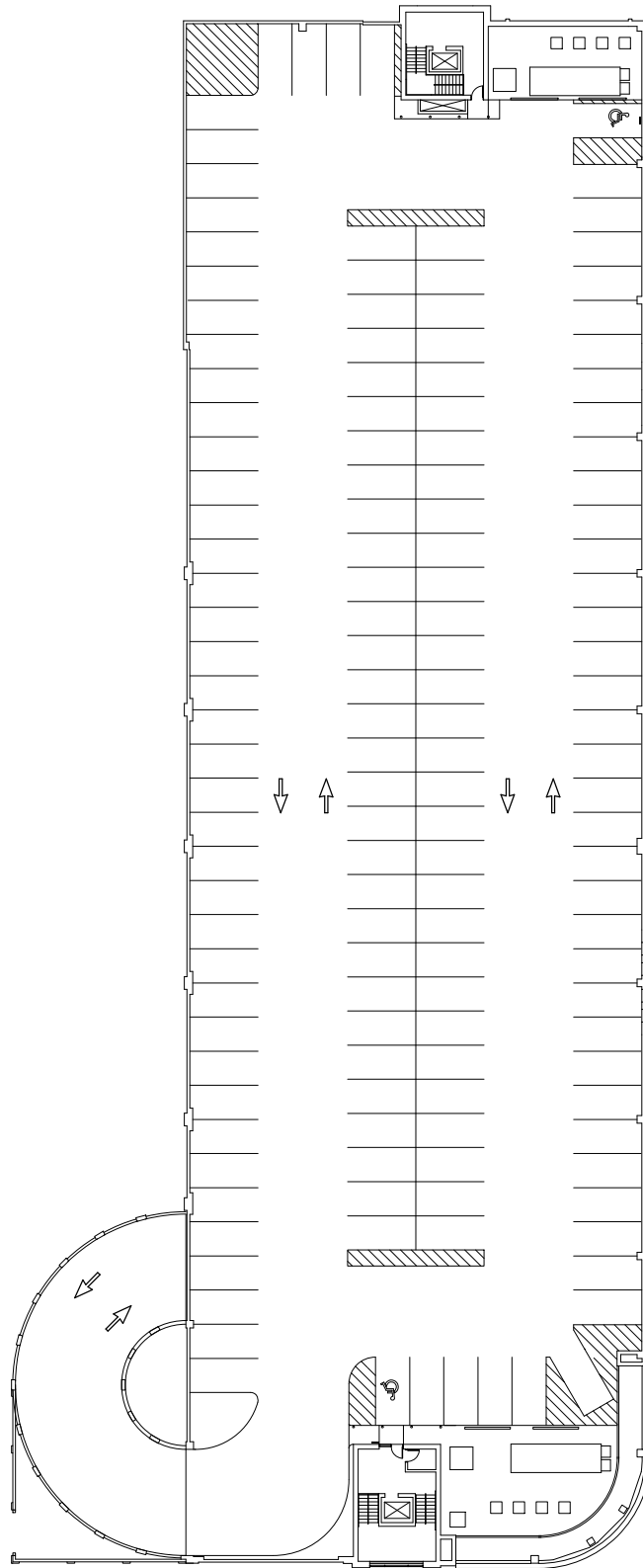


PLAZA BUILDING, FOURTH LEVEL

9/17/2018
1"=50'

EXHIBIT "PL-I" 10.40.010

MUNICIPAL PARKING LOT "I"



NOTE:

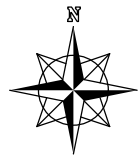
a) PARKING NOT TO EXCEED 24 HOURS.

141 (24 HR) PUBLIC PARKING STALLS
2 HANDICAPPED PARKING STALLS

"NO PARKING OVER 2" SNOW"
OR UNTIL CLEARED

ILLINOIS STREET

PLAZA BUILDING, FIFTH LEVEL

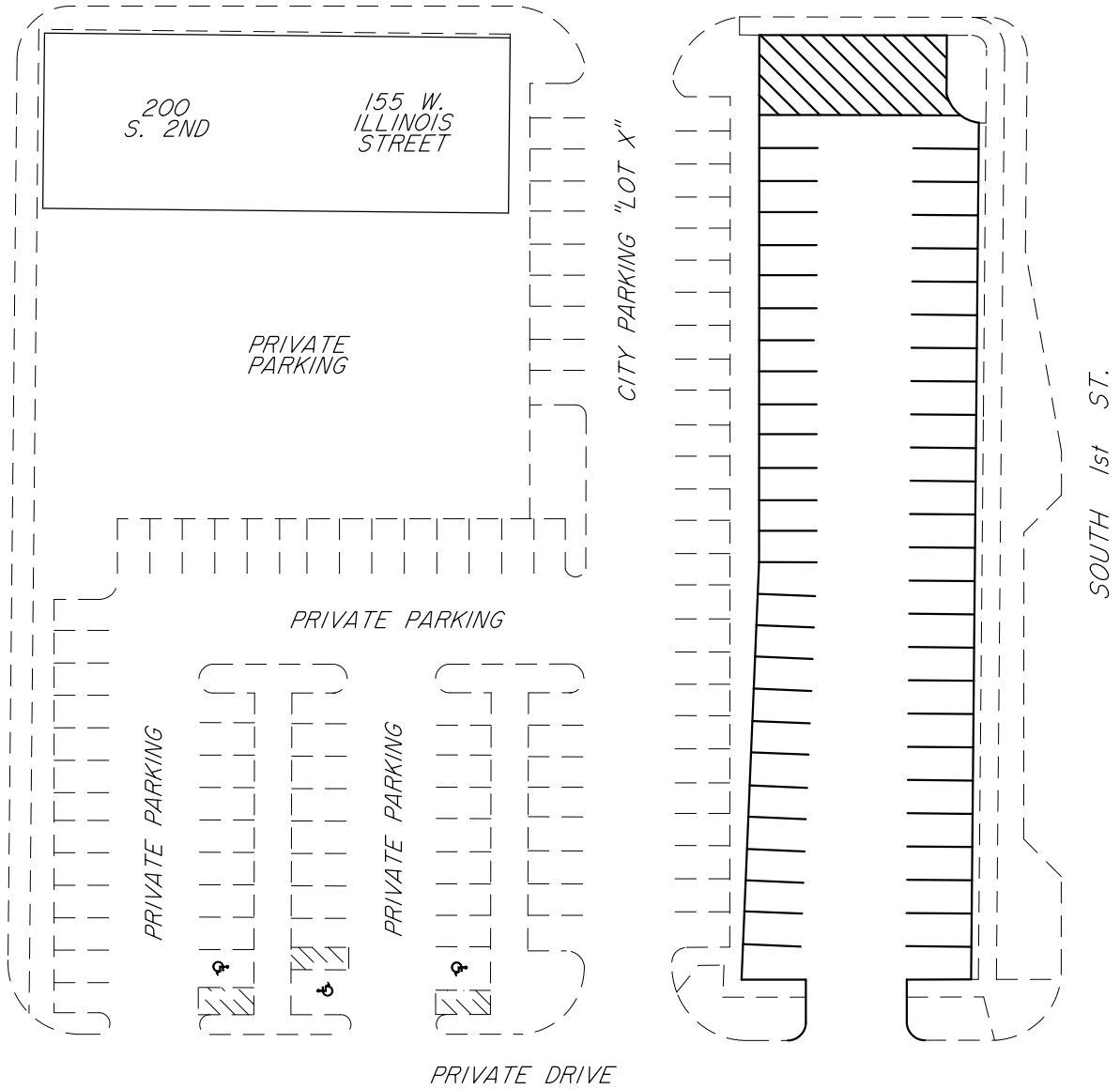


9/17/2018
1"=50'

MUNICIPAL PARKING LOT "V"

ILLINOIS ST.

SOUTH 2nd ST. (RT 31)



54 (3 HR) PUBLIC PARKING SPACES
8 AM - 5 PM, MON - FRI

INDIANA STREET PARKING LOT

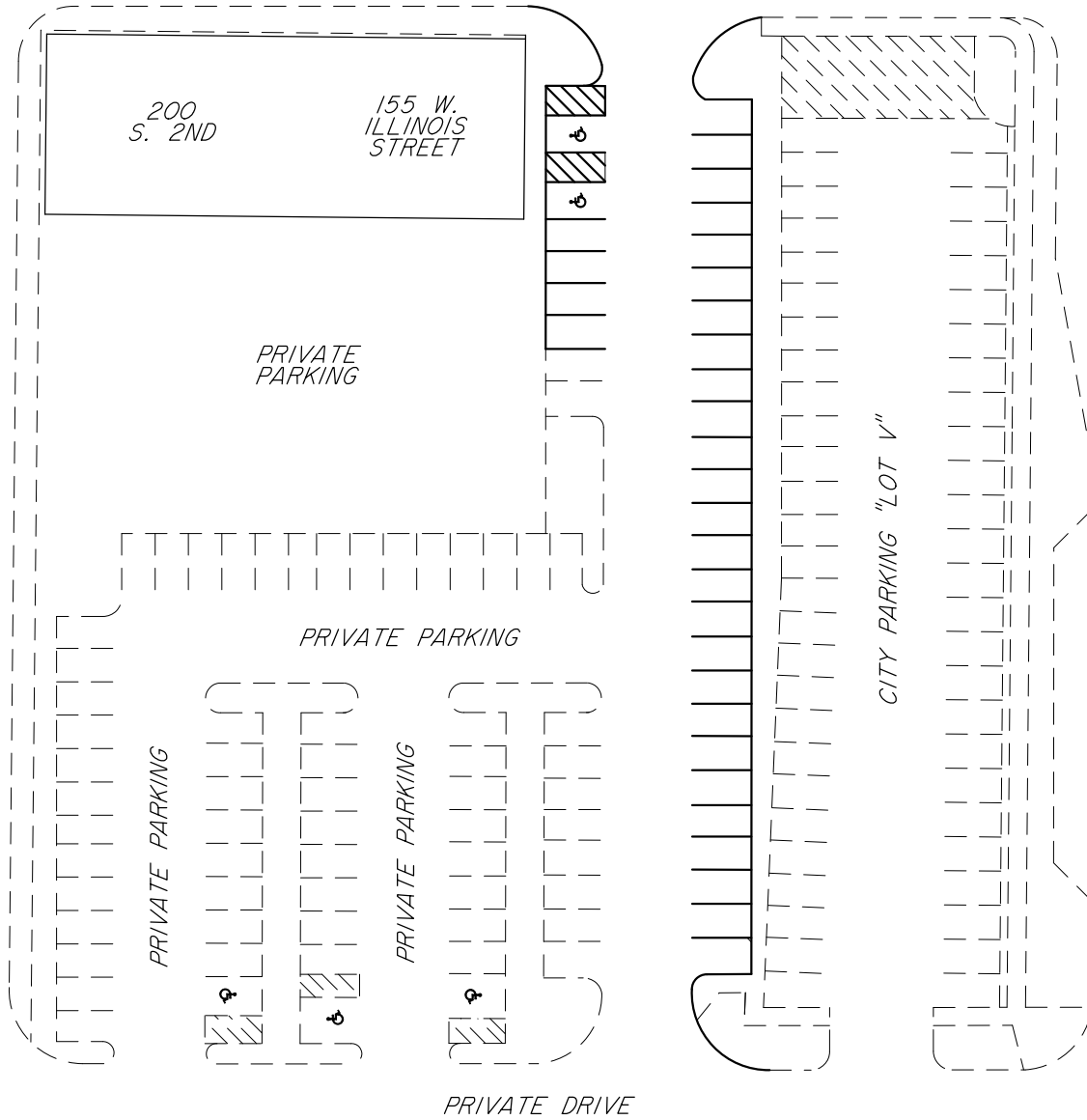


9-17-2018
1"=50'

EXHIBIT "PL-X" 10.40.010
MUNICIPAL PARKING LOT "X"

ILLINOIS ST.

SOUTH 2nd ST. (RT 31)



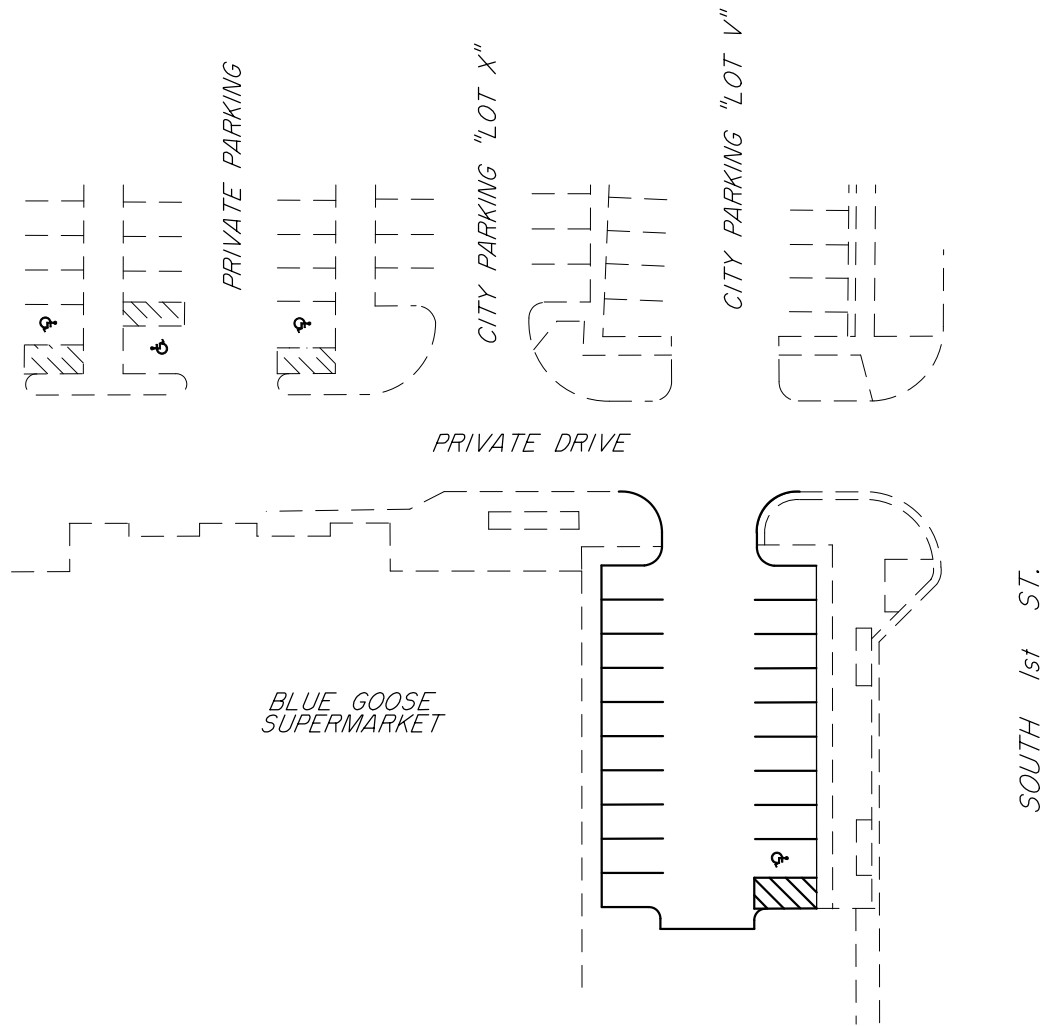
30 (8 HR) PUBLIC PARKING SPACES
2 (8 HR) HANDICAPPED STALLS
9 AM - 5 PM, MON - SAT

INDIANA STREET PARKING LOT



9-17-2018
1"=50'

MUNICIPAL PARKING LOT "Y"



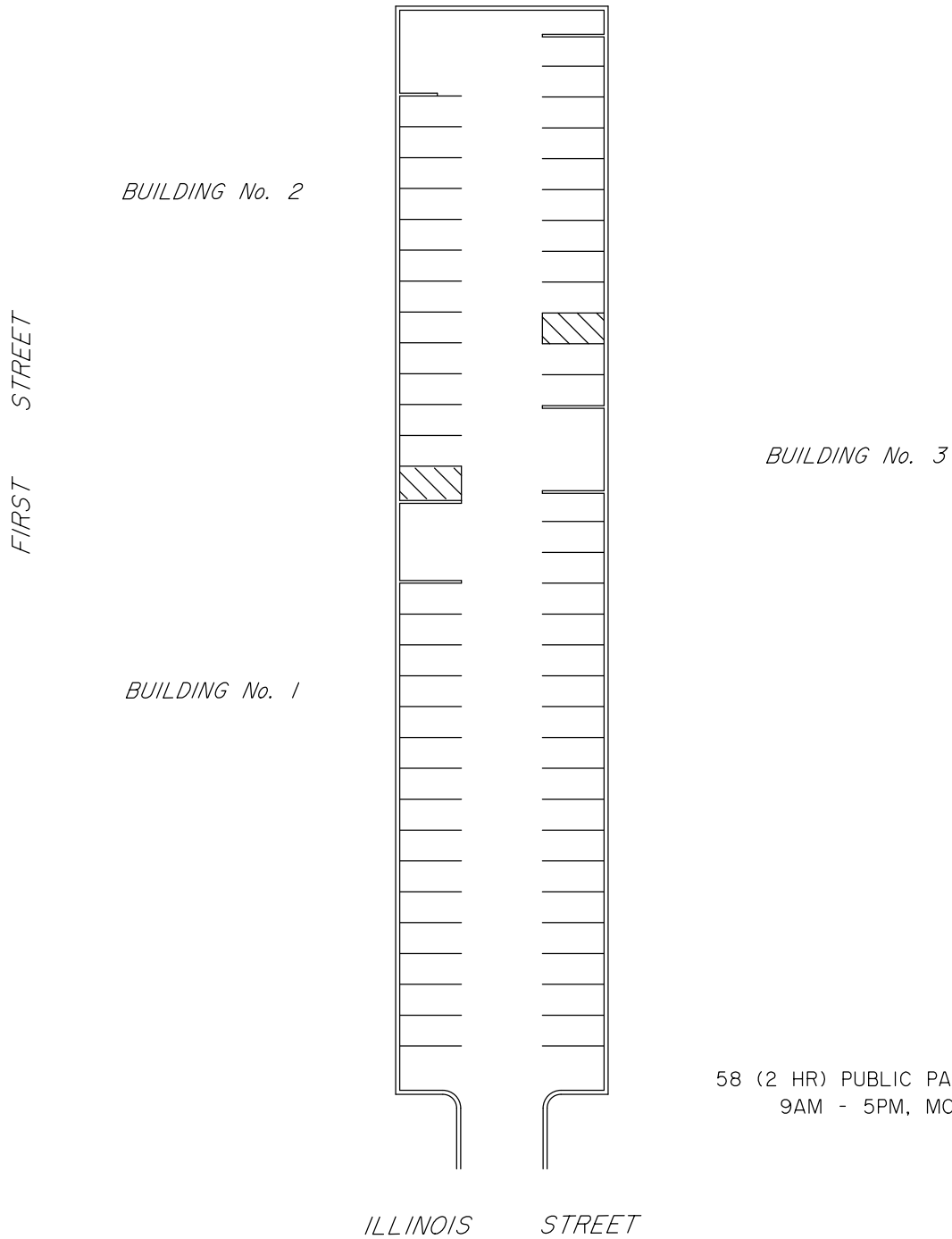
18 (12 HR) PARKING SPACES
1 (12 HR) HANDICAPPED STALL
EXCLUDES SAT - SUN & HOLIDAYS

INDIANA STREET PARKING LOT



9-17-2018
1"=50'

EXHIBIT "PL-Z" 10.40.010
MUNICIPAL PARKING LOT "Z"



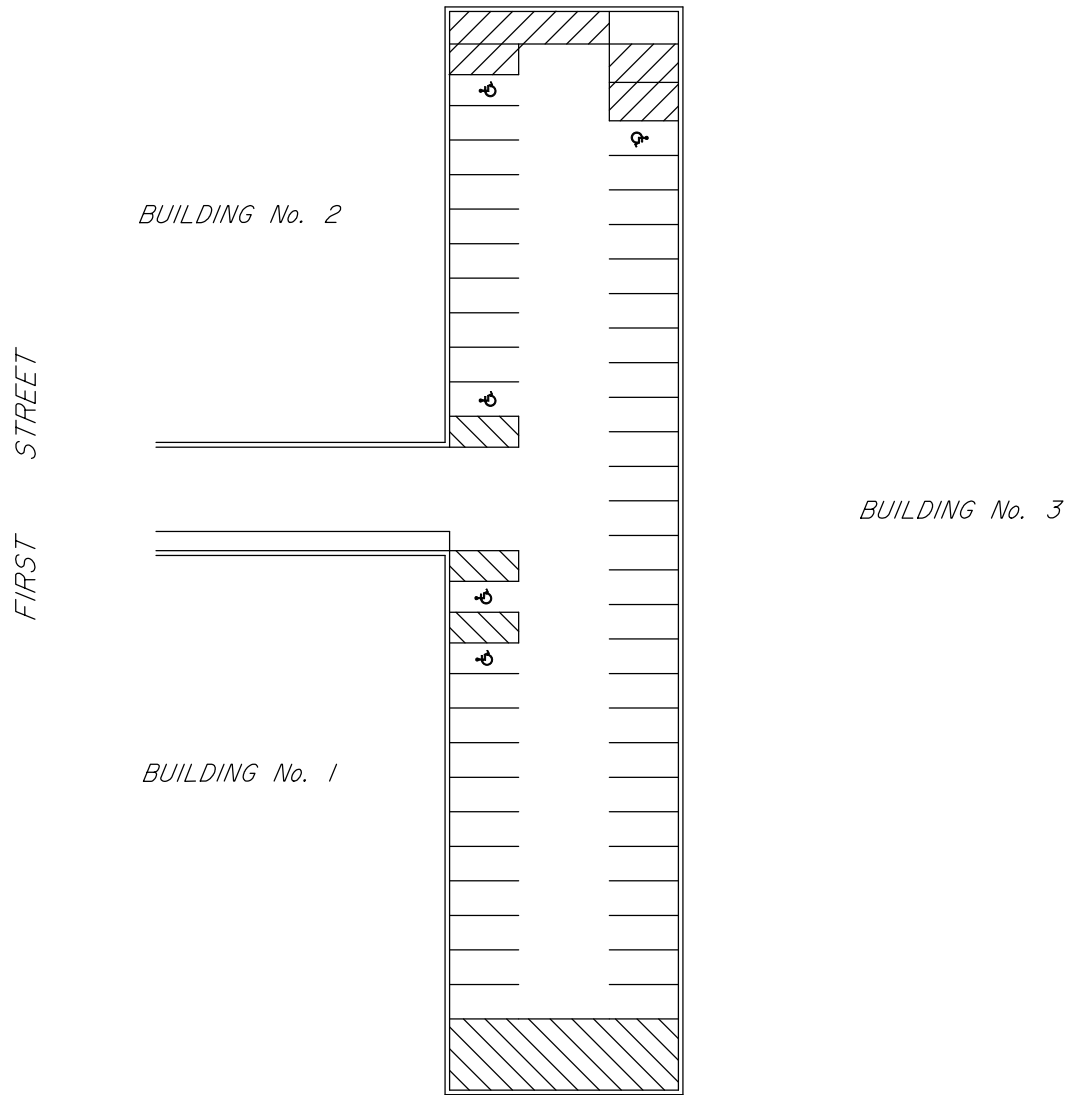
58 (2 HR) PUBLIC PARKING SPACES
9AM - 5PM, MON - FRI

SUSAN L. KLINKHAMER PARKING DECK
LOWER LEVEL



9/17/2018
1"=50'

EXHIBIT "PL-Z" 10.40.010
MUNICIPAL PARKING LOT "Z"



43 (2 HR) PUBLIC PARKING SPACES
5 (2 HR) HANDICAPPED SPACES
9AM - 5PM, MON - FRI

ILLINOIS STREET

SUSAN L. KLINKHAMER PARKING DECK
UPPER LEVEL



9/17/2018
1" = 50'