

**AGENDA ITEM EXECUTIVE SUMMARY**Agenda Item number: **6a**

Title:

Recommendation to Approve a Resolution Authorizing the Mayor and the City Clerk of the City of St. Charles to Approve the Award of Ford F-150 XL 4x2 Pickup to Zimmerman Ford and Sell Replaced Vehicle #1982

Presenter:

Christopher Minick

Meeting: Government Operations Committee

Date: September 19, 2016

Proposed Cost: \$30,798

Budgeted Amount: \$40,000

Not Budgeted: ☐**Executive Summary**

We are seeking approval to purchase Ford F-150 XL 4x2 Pickup. Two quotes have been received: Zimmerman Ford (local vendor); and Roesch Ford Commercial Truck Center [Suburban Purchasing (SP) Cooperative]. Based on the quotes received, we would like to award Zimmerman Ford the low quote of \$30,798. The vehicle was budgeted and approved in the FY 16/17 budget and approved by the City Fleet Committee.

Roesch Ford Commercial Truck Center Fleet SP Cooperative	\$31,305
Zimmerman Ford Local vendor	\$30,798

We are also seeking approval to sell replaced vehicle #1982 (2005 Ford F-350 SD) via the online auction site.

Attachments

Quotes & Resolution

Recommendation/Suggested Action:

Recommendation to Approve a Resolution Authorizing the Mayor and the City Clerk of the City of St. Charles to Approve the Award of Ford F-150 XL 4x2 Pickup to Zimmerman Ford and Sell Replaced Vehicle #1982.



1982

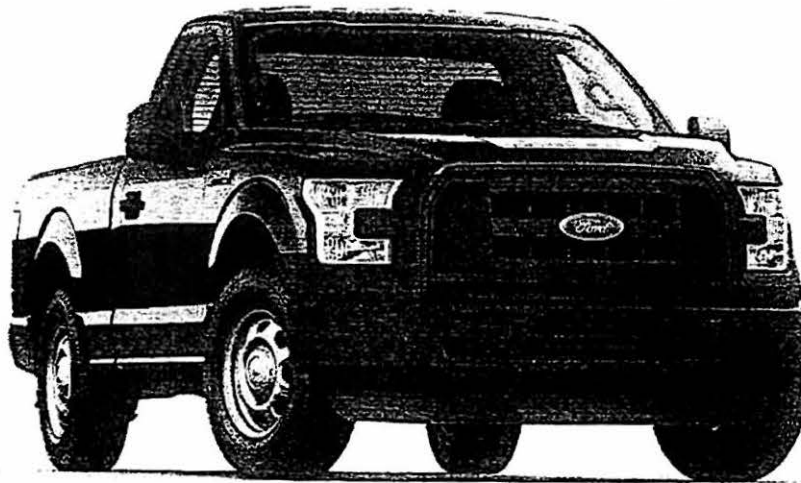
EL 2011

2525 East Main Street • St. Charles, IL 60174 • Phone: 630-584-1800 • Fax: 630-584-9886

\$ 30,798

2017 FORD F-150 XL 4x2 PICKUP

MUNICIPAL PRICING



Bill Wackerlin

630-584-1800

billatzimmerman@yahoo.com

2017 F-150
REGULAR CAB / SUPERCAB / SUPERCREW® – XL SERIES
STANDARD EQUIPMENT

MECHANICAL

- 3.5L V6 Ti-VCT with Flex-Fuel Capability (std. 4x2/4x4; NA with 157" or 163.7" WB)
- 2.7L V6 EcoBoost® with Auto Start/Stop Technology System (std. 4x2 with 157" or 163.7" WB)
- 5.0L V8 with Flex-Fuel Capability (std. 4x4 with 157" or 163.7" WB)
- 4x4 Electronic-Shift-On-the-Fly (ESOF) with Neutral Towing Capability
- Axle, Front – Independent Front Suspension (IFS)
- Brakes – 4-Wheel Disc with ABS
- Electronic Six-Speed Automatic Transmission with Tow/Haul and Sport Mode (NA ★w/3.5L V6 EcoBoost®; std w/3.5L V6 Ti-VCT, 2.7L V6 EcoBoost® & 5.0L V8 engines)
- ★ Electronic Ten-Speed Automatic Transmission with Tow/Haul and Sport Mode (std w/3.5L V6 EcoBoost® engine)
- Fail-Safe Cooling
- Jack
- Parking Brake
 - Mechanical (with 5.0L V8 or 3.5L EcoBoost® engine)
 - Electric (with 3.5L Ti-VCT or 2.7L EcoBoost® engine)
- SelectShift® Automatic Transmission with Progressive Range Select (NA 3.5L Ti-VCT engine)
- Shock Absorbers, Gas – Heavy-Duty, Outboard Mounted (front/rear)
- Springs, Front – Coil
- Springs, Rear – Leaf, Two-Stage Variable Rate
- Stabilizer Bar, Front
- Steering – Power, Rack-and-Pinion

EXTERIOR

- 170 Degree Rear-Door (SuperCab)
- Bumper and Fascia, Front – Black
- Bumper, Rear – Black
- Cargo Lamp – Integrated with Center High-mounted Stop Lamp (CHMSL)
- Daytime Running Lamps (DRL) (On/Off Cluster Controllable)
- Easy Fuel® Capless Fuel-Filler
- Exhaust – Single Rear
- F-150 Fender Badge
- Fuel Tank – Standard Range 23 Gallon
- Fully Boxed Steel Frame
- Grille – Black Three Bar Style with Black Nostrils and Black Surround
- Handles, Black – Door and Tailgate with Black Bezel
- Hooks – Pickup Box Tie-Down, four (4)
- Hooks – Front Tow 4x4, two (2)
- Mirrors, Sideview – Manual-folding, Manual Glass with Black Skull Caps
- Spare Tire Carrier – Rear Under Frame
- Spare Tire/Wheel Lock
- Stone Cuffs, Front & Rear
- Tailgate – removable with key lock
- Tires
 - 245/70R 17 BSW all-season tires (A/S) BSW 4x2
 - 265/70R 17 OWL all-season/all-terrain tires (A/S A/T) 4x4
- Trailer Sway Control
- Trailer Towing – 4-pin wiring, ball mounting provisions in rear bumper
- Wheels – 17" Silver Steel
- Wipers – Intermittent speed

INTERIOR/COMFORT

- 1st Row Manual Windows
- 2nd Row Fixed Windows (SuperCab)
- 2nd Row Manual Windows (SuperCrew®)
- 2.3" Productivity Screen in Instrument Cluster
- 4.2" Center-stack Screen w/Audio Controls

INTERIOR/COMFORT (continued)

- Air Conditioning Registers – Black Vanes with Chrome Knob
- Auxiliary Audio Input Jack (NA w/SYNC®)
- Black Vinyl Floor Covering
- Cupholder, deployable – under 20% seat
- Dome Light
- Fade-to-Off Interior Lighting
- Gauges and Meters – Fuel, Oil Pressure, Transmission Temperature and Engine Coolant Temperature Gauges; Speedometer, Odometer and Tachometer
- Grab Handles
 - Front – A-Pillar, Driver and Passenger Side
 - Rear – B-Pillar (SuperCrew®)
- Horn – Dual-Note
- Illuminated Entry
- Manual Air Conditioning, Single Zone
- Manual Locks
- Outside Temperature Display
- Powerpoint 12V – Front
- Rear-window with Fixed Glass and Solar Tint
- Rearview Mirror, Day/Night
- Scuff Plate, Driver and Front-Passenger Doors
- Seat, Front
 - Cloth 40/20/40
 - 2-Way manual driver/passenger
 - Armrest
- Seat, Rear
 - Cloth
 - 60/40 flip-up split seat (SuperCab)
 - 60/40 flip-up split seat with elongated cushion (SuperCrew®)
- Steering Wheel, Black Urethane – Manual Tilt/Telescoping and Manual Locking
- Visor, Driver Side; Visor with Mirror, Passenger-Side

SAFETY/SECURITY

- AdvanceTrac® w/RSC® (Roll Stability Control™)
- Airbags
 - Driver and Passenger Front Airbags
 - Driver and Passenger Seat-Mounted Side Airbags
 - Safety Canopy® Side-Curtain Airbags (1st and 2nd row coverage)
- Curve Control
- Halogen Headlamps
- Rainlamp Wiper Activated Headlamps
- Seat Belts, Active Restraint System (ARS). Three-point Manual Lap/Shoulder Belts with Height Adjusters, Pretensioners & Energy Mgmt Retractors on Outside Front Positions. Includes Autolock Features for Child Seats
- SecuriLock® Passive Anti-Theft System (PATS)
- SOS Post-Crash Alert System™
- Tire Pressure Monitoring System (TPMS)

DRIVER ASSIST

- AutoLamp – Auto On/Off Headlamps

FUNCTIONAL

- AM/FM Stereo (speakers; four (4) with Regular Cab, six (6) with SuperCab and SuperCrew®)
- Hill Start Assist

2017 FORD F150 regular cab 4x2 pick up 6.5' box

Base price.....\$19935

OPTION LIST FOR F150

Upgrade to supercab.....	400
Upgrade to 4x4 (inc shift on the fly).....	3100
5.0L V8 engine.....	1470
3:31 Electronic locking rear axle.....	388
101A package includes: power group, CD, Cruise, Sync & 4.2" screen	1585
Vinyl floor covering.....	N/C
Rubber floor mats.....	90
Chrome package.....	355
Spray in bedliner.....	455
Molded running boards in black.....	232
Back up alarm.....	115
Reverse sensing.....	255
Trailer brake controller.....	255
Trailer tow package.....	825
Daytime running lights.....	41
4 corner strobes LED (whelen)	695
Delivery.....	inc
1 Extra key without remote.....	75
Rustproofing & undercoating	399
Municipal license & title	128
TOTAL	\$30798

Please call me with any questions
Bill Wackerlin
Commercial sales
630-584-1800

2016 FORD F-150 XL 4X2

PICK UP

\$ 31,305

CONTRACT # 148



veh
1982



ROESCH FORD COMMERCIAL TRUCK CENTER

Brian Kilduff

briankilduff@roeschtrucks.com

630-279-6000 x2245

www.roeschford.com

REGULAR CAB / SUPERCAB / SUPERCREW® – XL SERIES STANDARD EQUIPMENT

MECHANICAL

- 3.5L V6 Ti-VCT with Flex-Fuel Capability (std. 4x2/4x4; NA with 157" or 163.7" WB)
- 2.7L V6 EcoBoost® with Auto Start/Stop Technology System (std. 4x2 with 157" or 163.7" WB)
- 5.0L V8 with Flex-Fuel Capability (std. 4x4 with 157" or 163.7" WB)
- 4x4 Electronic Shift-On-the-Fly (ESOF) with Neutral Towing Capability
- AdvanceTrac® w/RSC® (Roll Stability Control™)
- Axle, Front – Independent Front Suspension (IFS)
- Brakes – 4-Wheel Disc with ABS
- Curve Control
- Electronic Six-Speed Automatic Transmission with Tow/Haul Mode
- Fail Safe Cooling
- Hill Start Assist
- Jack
- Parking Brake
 - Mechanical (with 5.0L V8 or 3.5L EcoBoost® engine)
 - Electric (with 3.5L Ti-VCT or 2.7L EcoBoost® engine)
- SelectShift® Automatic Transmission with Progressive Range Select (NA 3.5L Ti-VCT engine)
- Shock Absorbers, Gas – Heavy-Duty, Outboard Mounted (front/rear)
- Spare Tire Carrier – Rear Under Frame
- Springs, Front – Coil
- Springs, Rear – Leaf, Two-Stage Variable Rate
- Stabilizer Bar, Front
- Steering – Power, Rack-and-Pinion
- Trailer Sway Control
- Trailer Towing – 4-pin wiring, ball mounting provisions in rear bumper

EXTERIOR

- 170 Degree Rear Door (SuperCab)
- ★ Autolamp – Auto On/Off Headlamps
- Bumper and Fascia, Front – Black
- Bumper, Rear – Black
- Cargo Lamp – integrated with Center High-mounted Stop Lamp (CHMSL)
- ★ Daytime Running Lamps (DRL) (On/Off Cluster Controllable)
- Easy Fuel® Capless Fuel-Filler
- Exhaust – Single Rear
- F-150 Fender Badge
- Fully Boxed Steel Frame
- Grille – Black Three Bar Style with Black Nostrils and Black Surround
- Halogen Headlamps
- Handles, Black – Door and Tailgate with Black Bezel
- Hooks – Pickup Box Tie-Down, four (4)
- Hooks – Front Tow 4x4, two (2)
- Mirrors, Sideview – Manual-folding, Manual Glass with Black Skull Caps
- ★ Rainlamp Wiper Activated Headlamps
- Spare Tire/Wheel Lock
- Stone Cuffs, Front & Rear
- Tailgate – removable with key lock
- Tires
 - 245/70R 17 BSW all-season tires (A/S) BSW 4x2
 - 265/70R 17 OWL all-terrain tires (A/T) 4x4
- Wheels – 17" Silver Steel
- Wipers – Intermittent speed

INTERIOR/COMFORT

- 1st Row Manual Windows
- 2nd Row Fixed Windows (SuperCab)
- 2nd Row Manual Windows (SuperCrew®)
- 2.3" Productivity Screen in Instrument Cluster
- 4.2" Center-stack Screen w/Audio Controls
- Airbags
 - Driver and Passenger Front Airbags
 - Driver and Passenger Seat-Mounted Side Airbags
 - Safety Canopy® Side-Curtain Airbags (1st and 2nd row coverage)
- Air Conditioning Registers – Black Vanes with Chrome Knob
- AM/FM Stereo (speakers; four (4) with Regular Cab, six (6) with SuperCab and SuperCrew®)
- Auxiliary Audio Input Jack (NA w/SYNC)
- Black Vinyl Floor Covering
- Cupholder, deployable – under 20% seat
- Dome Light
- Fade-to-Off Interior Lighting
- Gauges and Meters – Fuel, Oil Pressure, Transmission Temperature and Engine Coolant Temperature Gauges; Speedometer, Odometer and Tachometer
- Grab Handles
 - Front – A-Pillar, Driver and Passenger Side
 - Rear – B-Pillar (SuperCrew®)
- Horn – Dual-Note
- Illuminated Entry
- Manual Air Conditioning, Single Zone
- Manual Locks
- Outside Temperature Display
- Powerpoint 12V – Front
- Rear Window with Fixed Glass and Solar Tint
- Rearview Mirror, Day/Night
- Scuff Plate, Driver and Front-Passenger Doors
- Seat, Front
 - Cloth 40/20/40
 - 2-Way manual driver/passenger
 - Armrest
- Seat, Rear
 - Cloth
 - 60/40 flip-up split seat (SuperCab)
 - 60/40 flip-up split seat with elongated cushion (SuperCrew®)
- Seat Belts, Active Restraint System (ARS). Three-point Manual Lap/Shoulder Belts with Height Adjusters, Pretensioners & Energy Mgmt Retractors on Outside Front Positions. Includes Autolock Features for Child Seats
- SecuriLock® Passive Anti-Theft System (PATS)
- SOS Post-Crash Alert System™
- Steering Wheel, Black Urethane – Manual Tilt/Telescoping and Manual Locking
- Tire Pressure Monitoring System (TPMS)
- Visor, Driver Side; Visor with Mirror, Passenger-Side

FUEL TANKS

- Standard Range 23-Gallon

SUBURBAN PURCHASING COOPERATIVE
CONTRACT # 148
2016 FORD F150 XL REGULAR CAB 4X2 PICK UP
PRICING WORKSHEET

2016 MY F150 4x2 REGULAR CAB PICKUP 6.5' BOX - BASE VEHICLE \$19,137.00



OPTIONS - CAB STYLE

UPGRADE TO SUPERCAB	\$2,240.00
UPGRADE TO SUPERCREW	\$4,388.00
UPGRADE TO LONG BED (SuperCrew requires 5.0L V8)	\$362.00
UPGRADE TO 4X4	\$2,752.00



OPTIONS - POWERTRAIN

99P 2.7L V6 ECOBOOST (NA on 4x4 with 157" or 163.7" WB)	\$718.00
99F 5.0L V8	\$1,440.00
99G 3.5L V6 ECOBOOST (NA 122" WB)	\$1,981.00
XL? LIMITED SLIP REAR AXLE	\$515.00



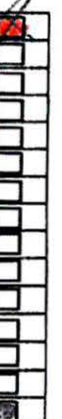
AVAILABLE FUNCTIONAL OPTIONS

66P SNOW PLOW PREP (4X4 Only req's 5.0L)	\$47.00
413 SKID PLATES (4x4 Only)	\$145.00
627 HEAVY DUTY PAYLOAD (Req's 53A with 5.0L or 53C with 3.5L)	\$1,354.00
53B CLASS IV TRAILER HITCH	\$166.00
53A TRAILER TOW	\$808.00
53C MAX TRAILER TOW (Req's 3.5L)	\$1,079.00
67T TRAILER BRAKE CONTROLLER (Req's 53A & 53B)	\$248.00
655 36 GAL. FUEL TANK (N/A 122" WB)	\$357.00
59R REMOTE START (Req's XLT Package)	\$325.00
64H 18 SILVER HD PAYLOAD REG WHEEL - XL	\$357.00



AVAILABLE EXTERIOR OPTIONS

861 XL SPORT PACKAGE	\$700.00
86A XL DECOR	\$700.00
301 XLT PACKAGE	\$4,363.00
54M TELESOPING TRAILER TOW MIRRORS (MANUAL GLASS)	\$82.00
54Y TELESOPING TRAILER TOW MIRRORS (POWER GLASS, HEATED) (Req's 85A)	\$357.00
18E RUNNING BOARDS - BLACK TUBULAR OR PLATFORM	\$271.00
63T TAILGATE STEP	\$339.00
59S FOG LAMPS	\$126.00
63E STOWABLE BED EXTENDER	\$227.00
76R REVERSE SENSING (Req's 53B or 53A)	\$248.00
90D BED DIVIDER (Req's 55B Box Link)	\$320.00



AVAILABLE INTERIOR OPTIONS

85A POWER EQUIPMENT GROUP	\$1,057.00
52G SYNC (Req's 50S)	\$585.00
58B AM/FM STERO CLOCK W/ SINGLE CD W/ AUX INPUT JACK	\$263.00
50S CRUISE CONTROL	\$203.00
76C BACK UP CAMERA	\$227.00
924 FIXED REAR WINDOW PRIVACY GLASS	\$90.00
57Q REAR WINDOW DEFROSTER	\$199.00
435 POWER SLIDING REAR WINDOW (Includes 57Q & 924)	\$408.00
47C CREW CHIEF TELEMATICS (N/A W/ SYNC)	\$722.00
55A* OFF ROAD PACKAGE	\$696.00
68G* CNG/PROPANE GASEOUS PREP PKG	\$284.00
66S* SSV PACKAGE	\$47.00
50N* NAVIGATION (XLT ONLY)	\$775.00
47E* PRO TRAILER BACK UP ASSIST	\$357.00
101A* PACKAGE INCLUDES POWER GROUP, CD, SYNC, CRUISE, 4.2" SCREEN	\$2,036.00

No

AVAILABLE DEALER INSTALLED OPTIONS		
<input type="checkbox"/>	96P	BEDLINER - PLASTIC DROP IN \$317.00
<input checked="" type="checkbox"/>	96W	BEDLINER - SPRAY IN \$447.00
<input type="checkbox"/>	942	DAYTIME RUNNING LIGHTS \$47.00
<input type="checkbox"/>	41H	ENGINE BLOCK HEATER \$82.00
<input type="checkbox"/>		BUG SHEILD \$195.00
<input type="checkbox"/>	85H	BACKUP ALARM \$125.00
<input type="checkbox"/>	96L	WHEEL WELL LINERS \$185.00
<input type="checkbox"/>	96T	TONNEAU COVER - SOFT \$475.00
<input type="checkbox"/>	96X	TONNEAU COVER - HARD \$950.00
<input type="checkbox"/>		MUD GUARDS \$150.00
<input checked="" type="checkbox"/>	RP	RUST PROOFING \$325.00
<input type="checkbox"/>	SM	DETAILED SHOP MANUAL (CD ROM) \$275.00
<input checked="" type="checkbox"/>		UNDERCOATING \$150.00
<input checked="" type="checkbox"/>		LICENSE AND TITLE "M" PLATES (NEW) \$103.00

INTERIOR SEAT OPTIONS		
<input checked="" type="checkbox"/>		EARTH GRAY
<input type="checkbox"/>		LIGHT CAMEL
<input type="checkbox"/>		CLOTH or VINYL 40/Console/40 \$267.00
<input type="checkbox"/>	168	CARPET FLOOR COVERING \$123.00
<input checked="" type="checkbox"/>	47R	RUBBER FLOOR MATS \$86.00

EXTERIOR PAINT COLORS		
<input type="checkbox"/>	H7	BROZE FIRE METALLIC (XLT ONLY) \$0.00
<input type="checkbox"/>	N1	BLUE JEANS METALLIC \$0.00
<input type="checkbox"/>	G1*	SHADOW BLACK \$0.00
<input type="checkbox"/>	UX	INGOT SILVER \$0.00
<input checked="" type="checkbox"/>	YZ	OXFORD WHITE \$0.00
<input type="checkbox"/>	H5	CARIBOU METALLIC \$0.00
<input type="checkbox"/>	HN	GUARD METALLIC \$0.00
<input type="checkbox"/>	PQ*	RACE RED \$0.00
<input type="checkbox"/>	SZ*	BLUE FLAME \$0.00
<input type="checkbox"/>	W6*	GREEN GEM \$0.00
<input type="checkbox"/>	RR*	RUBY RED METALLIC (XLT ONLY) \$0.00
<input type="checkbox"/>	TB*	LITHIUM GRAY (XLT ONLY OR SPORT APPEARANCE PKG) \$0.00
<input type="checkbox"/>	J7	MAGNETIC METALLIC \$0.00
<input type="checkbox"/>	XX	SCHOOL BUS YELLOW \$700.00
<input type="checkbox"/>	XX	SPECIAL PAINT (Minimum 5 Units Req'd) \$675.00

OPTIONS - WARRANTY		
<input type="checkbox"/>		6 YEAR 100,000 - 2WD BASE CARE \$1,600.00
<input type="checkbox"/>		6 YEAR 100,000 - 4WD BASE CARE \$2,100.00

VEHICLE TOTAL PRICE \$ _____

QUANTITY _____

ORDER TOTAL \$ _____

*NEW OR REVISED OPTIONS

Please enter the following:

Agency Name & Address

Contact Name

Phone Number

Purchase Order Number

Total Dollar Amount

Total Number of Units

Delivery Address

Ford Fleet Code

Please Submit P.O. & Tax Exempt Letter with Vehicle Order:

Roesch Ford Commercial Truck Center

333 W. Grand Ave.

Bensenville, IL 60106

Phone: (630)279-6000

Fax: (630)451-3509

Contact:

Brian Kilduff briankilduff@roeschtrucks.com

Fred Seng fredseng@roeschtrucks.com

Patti Ferrarini pattiferrarini@roeschtrucks.com

If We Have Missed An Option, Please Contact Our Office.

City of St. Charles, Illinois
Resolution No. _____

**A Resolution Authorizing the Mayor and the City Clerk of the City of St.
Charles to Approve the Award of Ford F-150 XL 4x2 Pickup to
Zimmerman Ford and Sell Replaced Vehicle #1982**

**Presented & Passed by the
City Council on _____, 2016**

BE IT RESOLVED by the Mayor and City Council of the City of St. Charles, Kane and DuPage Counties, Illinois, that the Mayor and City Clerk be and the same are hereby authorized to approve the award of a Ford F-150 XL 4x2 Pickup to Zimmerman Ford and Sell Replaced Vehicle #1982.

PRESENTED to the City Council of the City of St. Charles, Illinois,
this _____ day of September, 2016

PASSED by the City Council of the City of St. Charles, Illinois this _____ day of
September, 2016

APPROVED by the Mayor of the City of St. Charles, Illinois, this _____ day of
September, 2016

Raymond P. Rogina, Mayor

ATTEST:

City Clerk

COUNCIL VOTE:

Ayes:

Nays:

Absent:

Abstain: