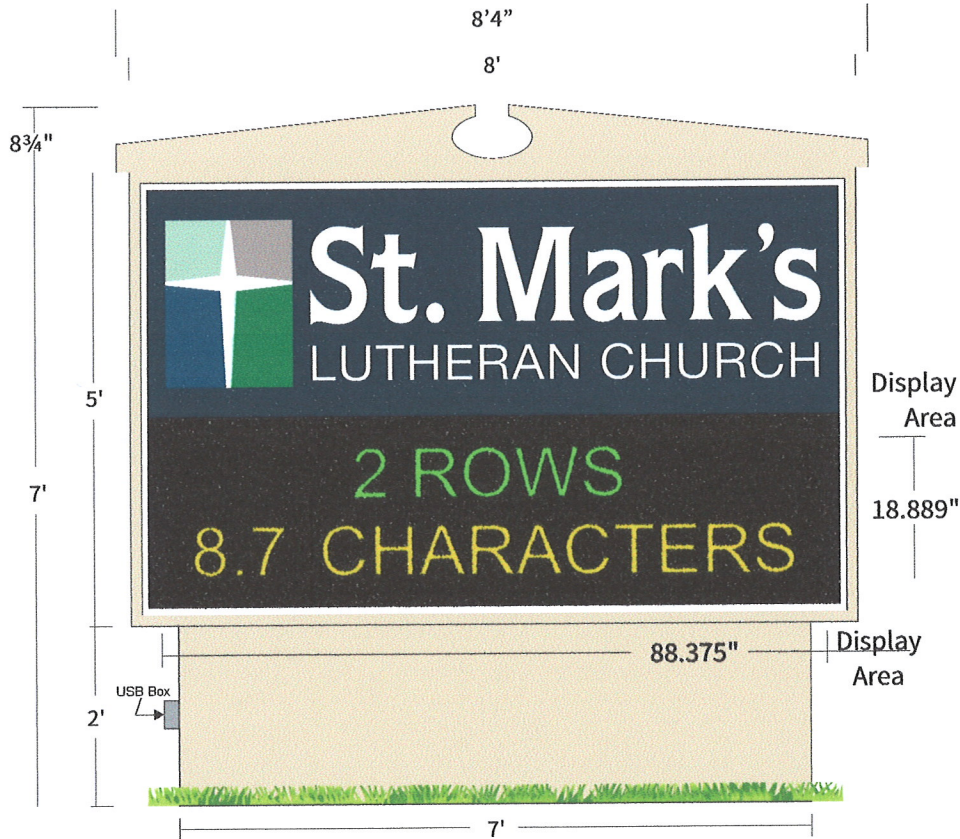
 <b>ST. CHARLES</b> <small>SINCE 1834</small>	<b>HISTORIC PRESERVATION COMMISSION AGENDA ITEM EXECUTIVE SUMMARY</b>			
	<b>Agenda Item Title/Address:</b>	COA: 101 S. 6 <sup>th</sup> Ave.		
	<b>Proposal:</b>	Sign		
	<b>Petitioner:</b>	Herman Gruebner		
<b>Please check appropriate box (x)</b>				
	<b>PUBLIC HEARING</b>		<b>MEETING 4/6/16</b>	<b>X</b>
<b>AGENDA ITEM CATEGORY:</b>				
<input checked="" type="checkbox"/>	Certificate of Appropriateness (COA)		Façade Improvement Plan	
	Preliminary Review		Landmark/District Designation	
	Discussion Item		Commission Business	
<b>ATTACHMENTS:</b>				
Sign renderings Plat of Survey showing sign location Streetview of sign location				
<b>EXECUTIVE SUMMARY:</b>				
Proposed is a monument sign for St. Mark's Lutheran Church. The sign includes an electronic reader board.				
<b>RECOMMENDATION / SUGGESTED ACTION:</b>				
Provide feedback and recommendations on approval of the COA.				



TekStar Capabilities

18.9"

For Full Capabilities go to [stewartsigns.com](http://stewartsigns.com)

TekStar Full Color  
20mm 24x112  
CABINET SIZE: 5'x8'

Header Vinyl: Royal Blue	Paint Color: Almond	Approved as shown
Text Color: White	Draft: White	_____
Cowling Text Vinyl:	SIGN DESIGN #	Date _____
<p><b>GRAPHICS DISCLAIMER:</b> This custom artwork is not intended to provide an exact match between ink, vinyl, paint, or LED color. Brickwork, masonry and landscaping is not included in the proposal. Measurements shown are approximations; dimensions of final product may vary. LED images shown are simulated to replicate optimum viewing distance. Sign is designed to be illuminated at all times. Sketches are based off of this premise.</p>		Approved with listed changes
		Date _____



5/8"=1'

Sk: 810641-2k-s

Cust: 1826238

4/5/2016

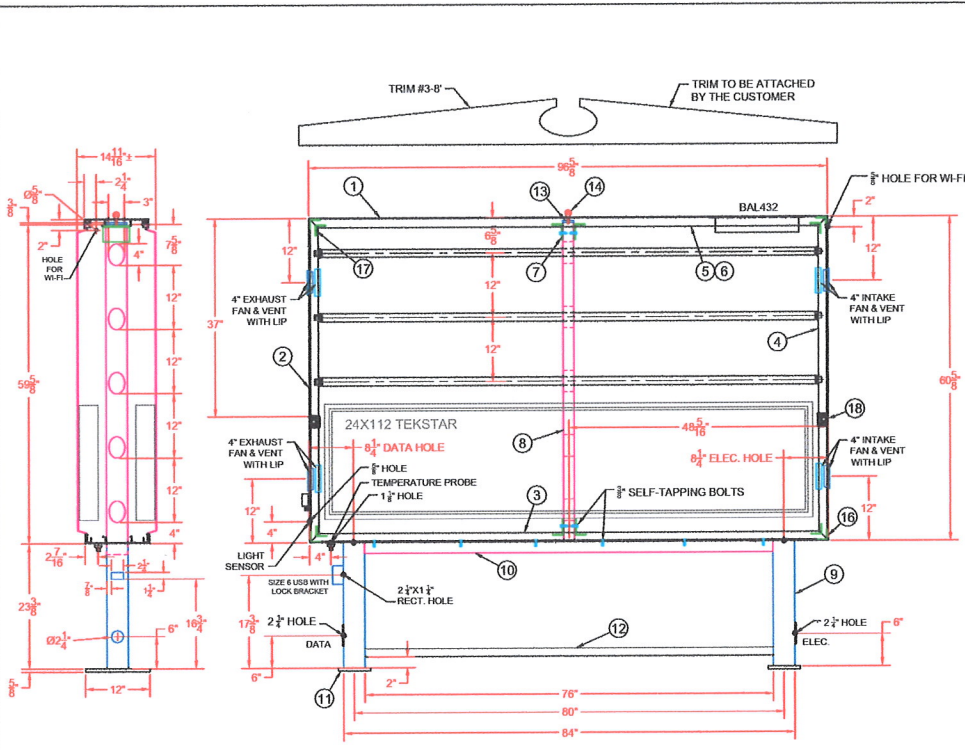
Ca/sMurphy

SOLD

**ORIGINAL DESIGN DO NOT DUPLICATE**


PH. 1-800-237-3928 - FAX 1-800-485-4280

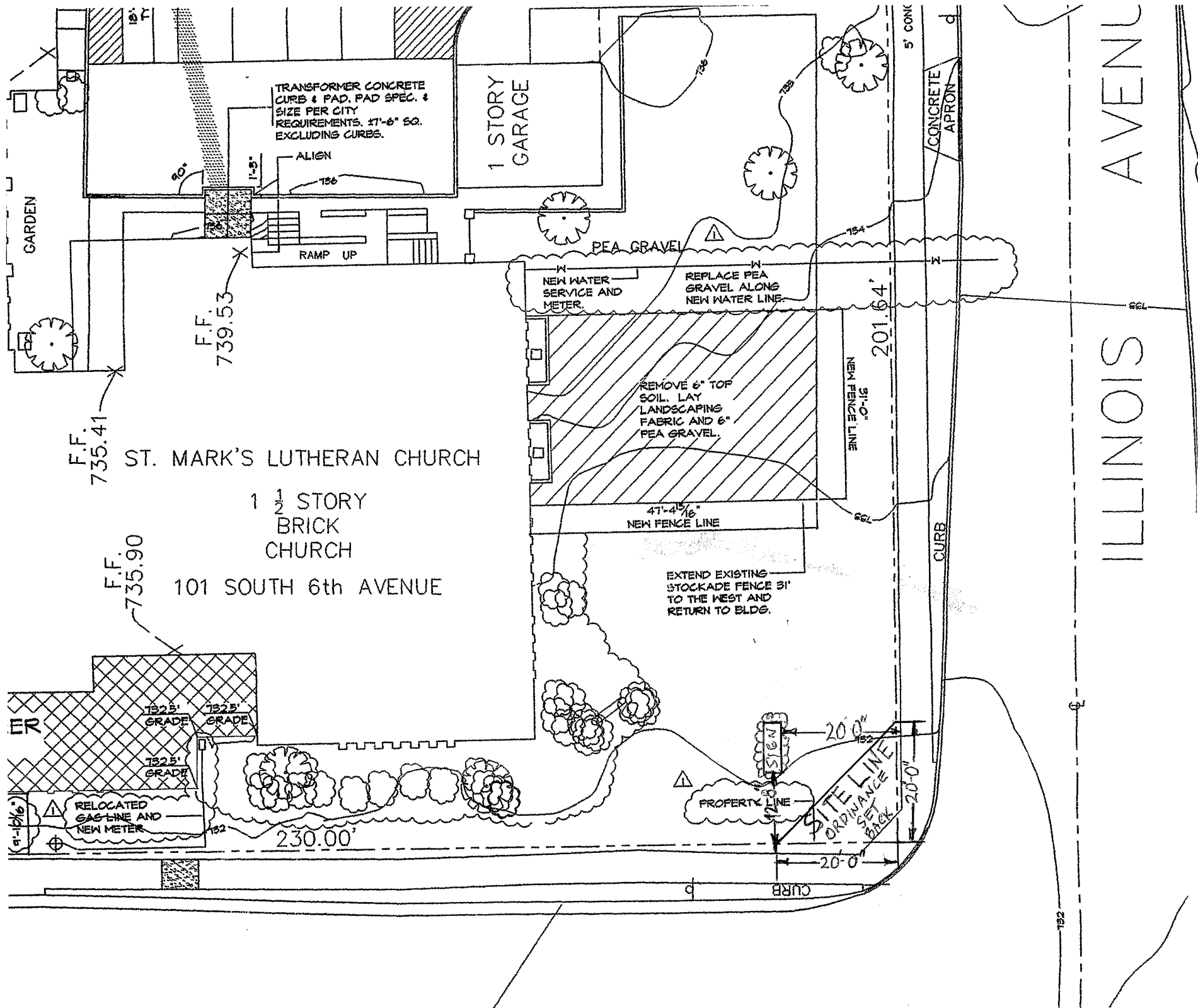




ITEM	QTY.	DESCRIPTION
①	2	12" HINGE EXTRUSION
②	2	12" HINGE EXTRUSION
③	2	1 1/2"X 1" "F" RETAINER
④	4	1 1/2"X 1" "F" RETAINER
⑤	2	1 1/2" HINGE RETAINER
⑥	10	HINGE BRACKET
⑦	4	2" X 3" X 3/16" ALUMINUM ANGLE
⑧	1	2" X 4" X 3/16" STEEL TUBE
⑨	2	4" X 4" X 11 GAUGE STEEL SQUARE TUBE
⑩	1	2" X 4" X 3/16" STEEL TUBE
⑪	2	6" X 12" X 3/8" STEEL BASE PLATE
⑫	1	1 1/2" X 1 1/2" X 1/8" STEEL ANGLE
⑬	1	2" X 4" X 3/8" STEEL CAP
⑭	1	1/2" EYEBOLT
⑮	1	REPLACEMENT BOLT FOR EYEBOLT
⑯	4	2" X 2" X 3/16" ALUMINUM ANGLE
⑰	4	2" X 2" X 3/16" ALUMINUM ANGLE
⑱	4	1 1/2"X1 1/2"X1/8"X28" ALUMINUM PROP ROD BRACKET
⑲	4	1 1/2"X1 1/2"X1/8"X28" ALUMINUM PROP ROD BRACKET
⑳	2	1 1/2"X1 1/2"X1/8"X48" ALUMINUM PROP ROD BRACKET

DRAWING DESIGNED TO BE PRINTED ON 8 1/2"x14" PAPER

 <p>EBSCO Sign Group 2201 CANTON COURT, SUITE 213 MARIETTA, GA 30067 PH 1-800-337-3033 FAX 1-800-485-4300</p>	Date: 04-05-16 Drawn by: JRM	<b>J.M.S. TEMPLATE MUST BE USED TO SET THREADED RODS INTO CONCRETE</b>	Sign Model: TEKSTAR 58, 24x112	Page 1 OF 3
	Drawing #: TEK-20mm-C-24x112		Sketch #: 810641-2J-S	Customer #: 1826238



TRANSFORMER CONCRETE CURB & PAD, PAD SPEC. & SIZE PER CITY REQUIREMENTS. 27'-6" SQ. EXCLUDING CURBS.

1 STORY GARAGE

ST. MARK'S LUTHERAN CHURCH

1 1/2 STORY BRICK CHURCH

101 SOUTH 6th AVENUE

F.F. 739.53

F.F. 735.41

F.F. 735.90

7825' GRADE

7825' GRADE

7825' GRADE

RELOCATED GAS LINE AND NEW METER

230.00'

47'-4 1/16" NEW FENCE LINE

201.64'

EXTEND EXISTING STOCKADE FENCE 31' TO THE WEST AND RETURN TO BLDG.

PROPERTY LINE

SITE LINE ORDINANCE SET BACK

20'-0"

20'-0"

20'-0"

20'-0"

NEW FENCE LINE 31'-0"

CURB

CURB

CURB

CONCRETE APRON

5' CONC

ILLINOIS AVENUE

ILLINOIS AVENUE

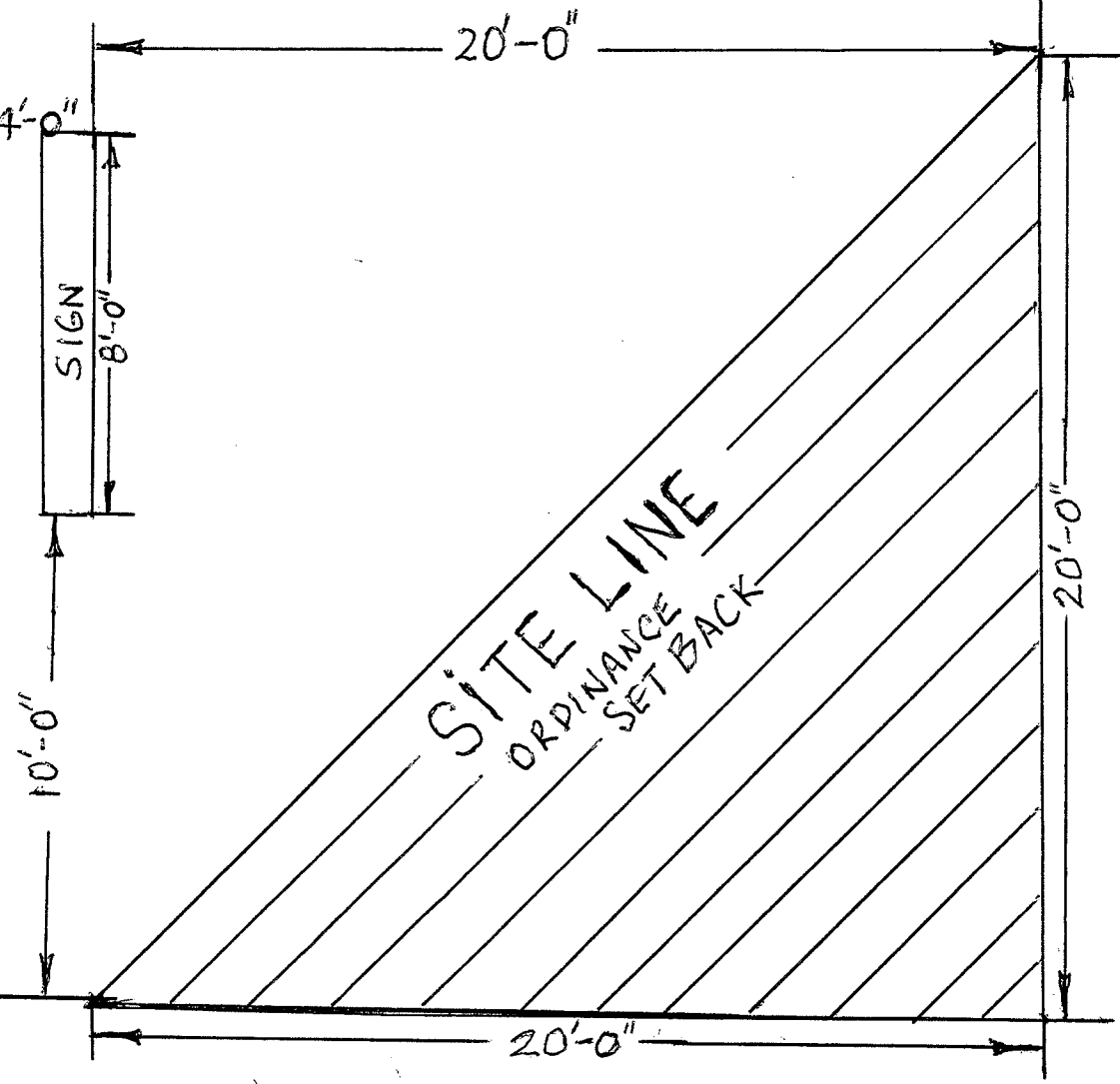
192

SCALE-1"=4'-0"

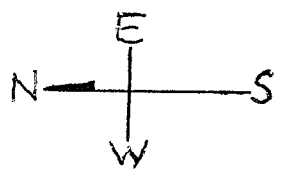
ST. MARK'S.  
LUTHERAN CHURCH  
101 S. 6TH. AVE,  
ST. CHARLES

PROPERTY  
LINE ?

PROPERTY  
LINE



ILLINOIS AVE.



5th. AVE.

