 <p><b>ST. CHARLES</b> SINCE 1834</p>	<b>HISTORIC PRESERVATION COMMISSION AGENDA ITEM EXECUTIVE SUMMARY</b>			
	<b>Agenda Item Title/Address:</b>	COA: 200 W. Main St.		
	<b>Proposal:</b>	Sign		
	<b>Petitioner:</b>	John Kuhn, Banner Up Signs		
<b>Please check appropriate box (x)</b>				
	<b>PUBLIC HEARING</b>		<b>MEETING 6/15/16</b>	<b>X</b>
<b>AGENDA ITEM CATEGORY:</b>				
<b>X</b>	Certificate of Appropriateness (COA)		Façade Improvement Plan	
	Preliminary Review		Landmark/District Designation	
	Discussion Item		Commission Business	
<b>ATTACHMENTS:</b>				
Sign rendering				
<b>EXECUTIVE SUMMARY:</b>				
Proposed is an aluminum sign cabinet with internally illuminated acrylic push-thru lettering. The sign will be placed between the first and second stories. The existing sign on the second story will be removed.				
<b>RECOMMENDATION / SUGGESTED ACTION:</b>				
Provide feedback and recommendations on approval of the COA.				

This lettering to be removed

This sign is 40 sq.ft.



64'

21'6"



MOORE & DIGIOVANNI  
6-30 524-9111

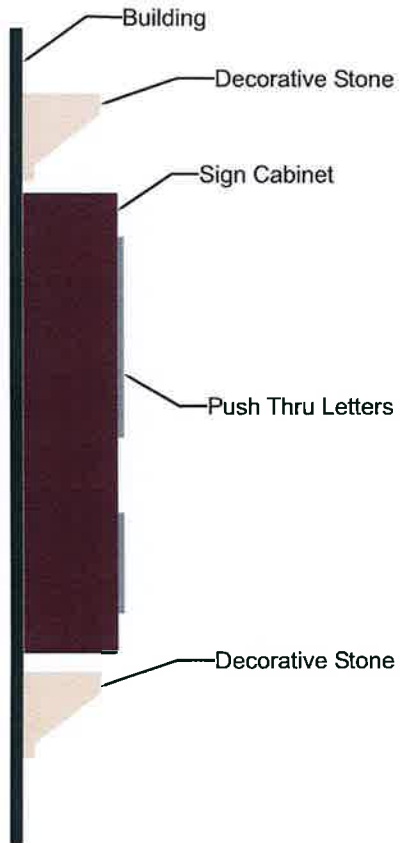
 **FORTHRIGHT**  
Financial Planning



**TIGHE, KRESS & ORR**  
*Certified Public Accountants*

23" tall x 200" wide x 6" deep internally lit sign cabinet. Cabinet to be painted equivalent of Benjamin Moore 2106-20 Auberge Brown. Solid aluminum face with acrylic letters that are pushed thru. Internally lit with white LED's. When lit, only letters/logo will light up. Sign cabinet UL certified.

Side View



Example of push thru acrylic letters

