



AGENDA ITEM EXECUTIVE SUMMARY

Agenda Item number: IIC1

Title:	Motion to Approve and Execute an Acceptance Resolution for Public Utilities for the Prairie Winds Development.
Presenter:	Rita Tungare

Meeting: City Council Date: November 19, 2018

Proposed Cost: N/A Budgeted Amount: N/A Not Budgeted:

Executive Summary *(if not budgeted please explain):*

Public watermain, sanitary sewer and appurtenances were constructed by the developer to service the improvements for the Prairie Winds development. Said utilities have undergone and passed all required testing.

Planning and Development Committee recommended conditional approval on November 13, 2017 contingent upon completion of the punchlist prior to final City Council action. Alderman Stellato abstained.

Developer has resolved punchlist items.

Attachments *(please list):*

- Acceptance Resolution
- Bill of Sale
- Exhibit

Recommendation/Suggested Action *(briefly explain):*

Staff recommends approval and execution of an acceptance resolution.

**City of St. Charles
Kane and DuPage Counties**

ACCEPTANCE RESOLUTION

Subdivision Name: Prairie Winds

Whereas Prairie Winds, LLC, the Developer of Prairie Winds, constructed public watermain, sanitary sewer and appurtenances in easements as described in the attached exhibits in the aforesaid Subdivision; and

Whereas, the Developer has constructed public watermain, sanitary sewer and appurtenances in accord with the plans and specifications, heretofore approved by the City of St. Charles; and

Whereas, the constructed public watermain, sanitary sewer and appurtenances have been inspected by the Engineer for the sub divider and by a representative for the City of St. Charles and are found to be satisfactory;

Now, Therefore, Be It Resolved by the City Council of St. Charles, that said Council hereby approves and accepts the constructed public watermain, sanitary sewer and appurtenances. It being understood that this acceptance and/or approval in no way relieves the Developer of his Surety of any obligation for maintenance for a period of one (1) year as provided for in said Contract.

Passed by the City Council of the City of St. Charles, this 19th day of November, 2018, and **APPROVED** by the Mayor of said City of St. Charles, this 19th day of November, 2018.

MAYOR

ATTEST:

CITY CLERK

BILL OF SALE

KNOW ALL MEN BY THESE PRESENTS, that Prairie Winds, LLC ("Seller"), in consideration of One (\$1.00) Dollar and other good and valuable consideration, does hereby grant, sell, transfer and deliver unto the CITY OF ST. CHARLES, an Illinois municipal corporation in Kane County, Illinois, ("City") the following goods, chattels or other items of personal property, to wit:

ONE: Each and every part of a Public Watermain, Sanitary Sewer & Appurtenances as fully described in a certain set of plans and specifications attached hereto and incorporated herein as Exhibit "A".

TWO: The object of this Bill of Sale is to grant, sell, transfer and deliver to the CITY, with the exceptions noted, the ownership in all items of personalty, which comprise the Public Watermain, Sanitary Sewer & Appurtenances by SELLER to date within the CITY.

SELLER does hereby covenant and warrant to the CITY that SELLER is the lawful owner of the aforescribed goods, chattels and personalty; that such items are free and clear from all encumbrances; that SELLER has the absolute right to sell the same as aforesaid; and that SELLER warrants and will defend the same against the claims and demands of all persons; and that the execution of this Bill of Sale is an authorized act of said SELLER.

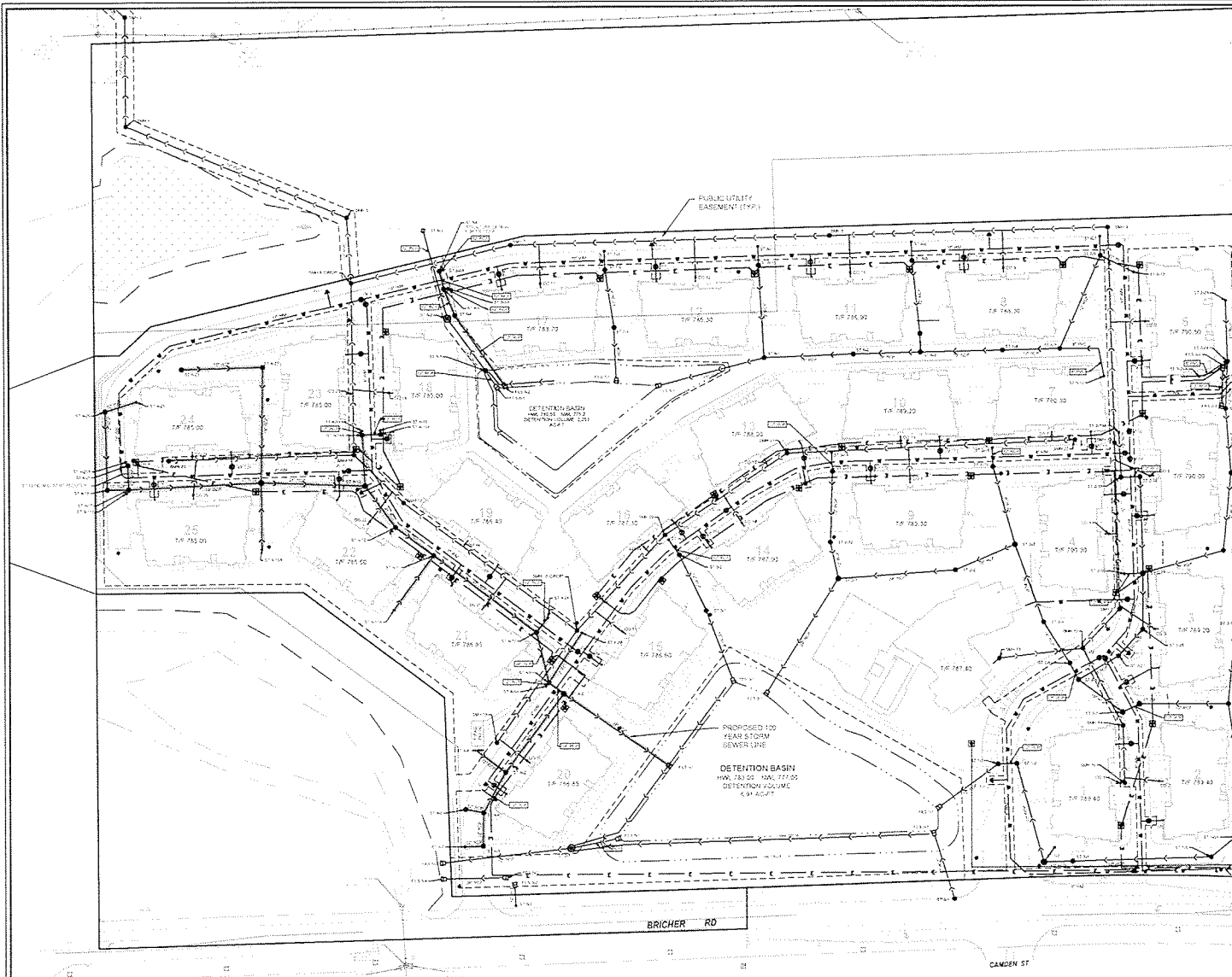
IN WITNESS WHEREOF, SELLER has signed and sealed this Bill of Sale at _____, this 2 day of November, 2017.

(SELLER)

BY: _____

ATTEST:

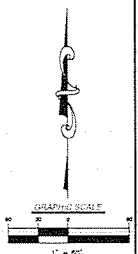
Deb O'Connor



- NOTES
1. ALL WATERMAIN SHALL BE 8" DUCTILE IRON PIPE UNLESS OTHERWISE NOTED.
 2. ALL SANITARY SEWER SHALL BE 8" PVC DSR 24 UNLESS OTHERWISE NOTED.
 3. ALL STORM SEWER SHALL BE 12" REINFORCED CONCRETE PIPE UNLESS OTHERWISE NOTED.
 4. SANITARY SEWER SHALL BE EXTENDED TO THE NORTH TO R. ROUTE 34.
 5. EACH BUILDING TO RECEIVE ONE 9" PVC SANITARY STEEL ONE 4" WATER STOP AND ONE VALVE BOX.
 6. STORM SEWER OUTSIDE THE PUBLIC ROW TO BE PRIVATELY OWNED AND MAINTAINED.
- PROPOSED 100 YEAR STORM SEWER LINE.

OUT IN PLACE 12" DUCTILE IRON PIPE AND CONNECT TO EXISTING 12" WATER MAIN.

REMOVE 12" WATER MAIN AND CONNECT TO EXISTING 12" WATER MAIN.



V3
 V3 Companies
 7325 James Avenue
 Woodridge, IL 60017
 630.724.9200 phone
 630.724.9202 fax
 www.v3co.com

REVISIONS			
NO.	DATE	DESCRIPTION	BY
1	10/20/17	REVISED PER CITY REVIEW	
2	10/24/17	REVISED PER CITY REVIEW	
3	07/18/17	REVISED PER CITY REVIEW	

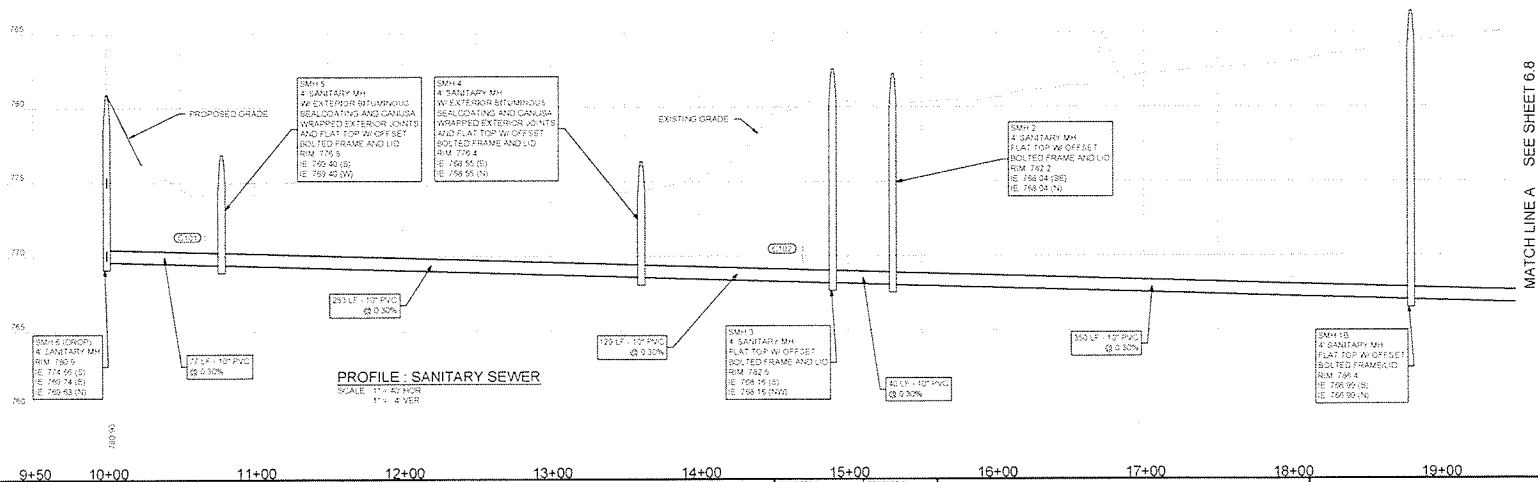
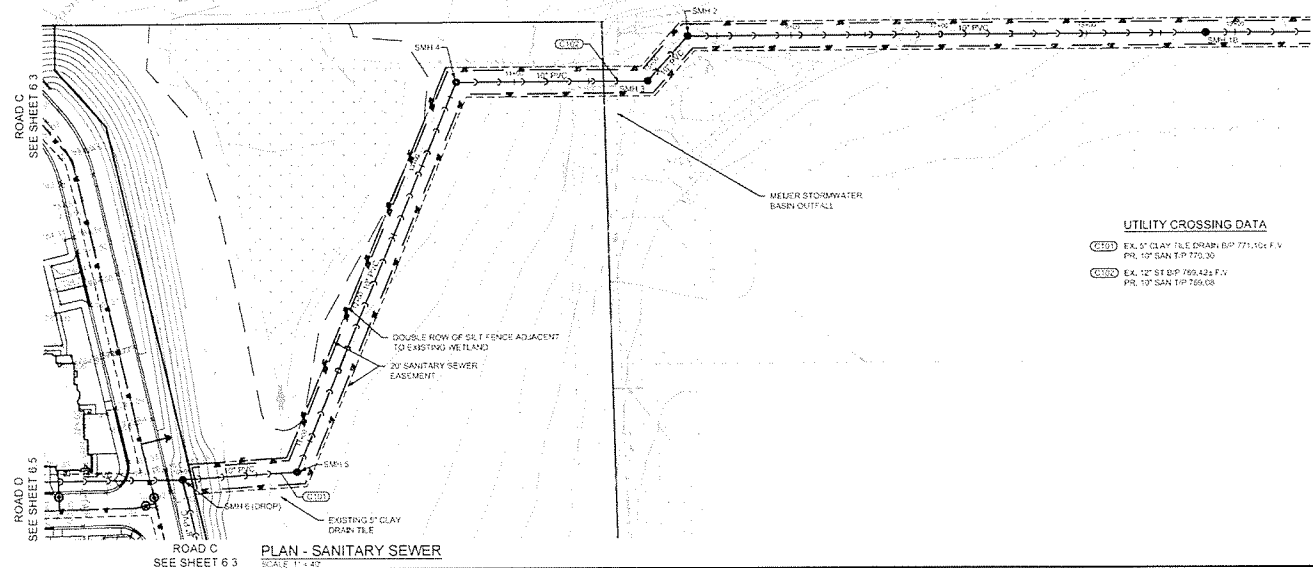
PROJECT NO.	18262	DESCRIPTION	MFB
DESIGNER	400 UTIL/16262 DWG	DRAWN BY	VRS
DESIGN SCALE	AS SHOWN	CHECKED BY	BCR
SCALE	AS SHOWN	PROJECT MANAGER	BCR

PRAIRIE WINDS
 ST. CHARLES FINAL ENGINEERING ILLINOIS

OVERALL UTILITY PLAN

DRAWING NO. **6.0**

18262 - OVERALL UTILITY PLAN



V3 Companies
7325 Jones Avenue
Woodridge, IL 60917
630-734-9200 phone
630-734-9212 fax
www.v3eng.com

NO.		DATE	DESCRIPTION	NO.	DATE	DESCRIPTION
1	PK-02-11		REVISED PER CITY REVIEW			
2	PK-05-11		REVISED PER CITY REVIEW			

PROJECT NO.	DATE	REVISION	BY
10262			
57 SAN15262 DWG			VRS
06/05/17			BCR
06/05/17			BCR

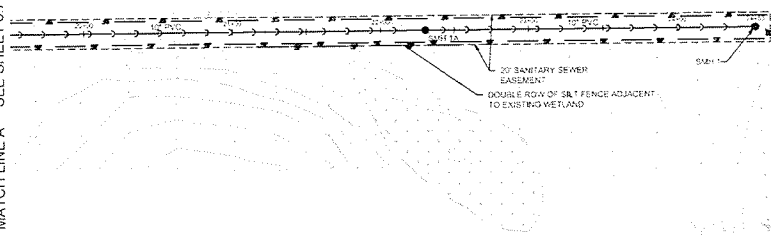
PRAIRIE WINDS
ST. CHARLES
FINAL ENGINEERING
ILLINOIS

PLAN AND PROFILE - SANITARY SEWER

DRAWING NO. **6.7**

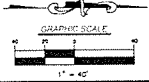
16262 - PLAN AND PROFILE - SANITARY SEWER

MATCH LINE A SEE SHEET 6.7

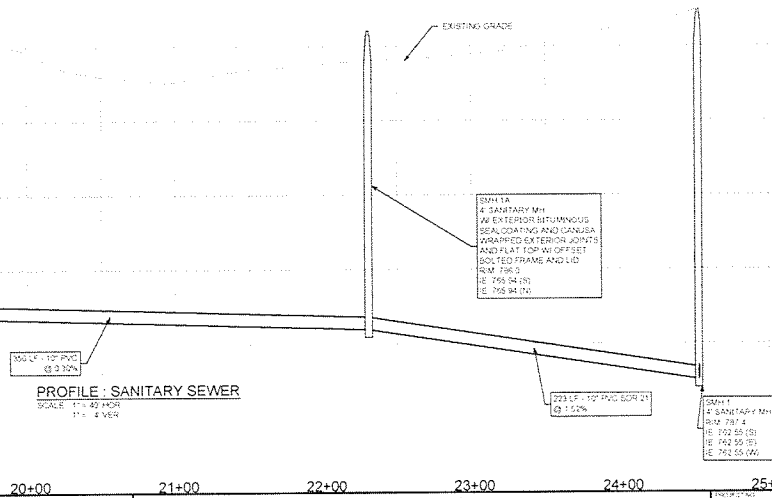


LINCOLN HIGHWAY (IL RT. 30)

PLAN - SANITARY SEWER
SCALE: 1" = 40'



MATCH LINE A SEE SHEET 6.7



PROFILE - SANITARY SEWER
SCALE: 1" = 40' HOR
1" = 4' VER

REVISIONS

NO.	DATE	DESCRIPTION	NO.	DATE	DESCRIPTION
1	02-22-17	REVISED PER CITY REVIEW			
2	05-29-17	REVISED PER CITY REVIEW			

PROJECT NO.	19262	ISSUANCE
DRAWN BY	BRN	DATE
CHECKED BY	BRN	DATE
PROJECT MANAGER		
SCALE	1" = 40'	DATE



V3 Companies
7395 Jones Avenue
Woodridge, IL 60917
630.724.9200 phone
630.724.9222 fax
www.v3co.com

PRAIRIE WINDS

PLAN AND PROFILE - SANITARY SEWER

6.8

ST. CHARLES FINAL ENGINEERING ILLINOIS

19262 - PLAN AND PROFILE - SANITARY SEWER