		<b>HISTORIC PRESERVATION COMMISSION AGENDA ITEM EXECUTIVE SUMMARY</b>			
		<b>Agenda Item Title/Address:</b>		Preliminary Review: 402 N 4 <sup>th</sup> Ave	
		<b>Proposal:</b>		New Construction	
		<b>Petitioner:</b>		Jim Dulaney	
		<b>Please check appropriate box (x)</b>			
		<b>PUBLIC HEARING</b>		<b>MEETING 2/6/19</b>	<b>X</b>
<b>AGENDA ITEM CATEGORY:</b>					
	Certificate of Appropriateness (COA)			Façade Improvement Plan	
X	Preliminary Review			Landmark/District Designation	
	Discussion Item			Commission Business	
<b>ATTACHMENTS:</b>					
Design Drawings					
<b>EXECUTIVE SUMMARY:</b>					
<p>Proposed is a new ranch home designed in the craftsman style, on a vacant lot off of N 4<sup>th</sup> Ave. The lot is located behind 407 N Park Ave. The road leading to the house is/ will be extended and the House will face N. 4th Ave.</p>					
<b>RECOMMENDATION / SUGGESTED ACTION:</b>					
Provide feedback and recommendations on the preliminary designs					





# City of St. Charles, Illinois

Two East Main Street St. Charles, IL 60174-1984  
Phone: 630-377-4400 Fax: 630-377-4440 - [www.stcharlesil.gov](http://www.stcharlesil.gov)

## Precision GIS

RAYMOND ROGINA  
MARK KOENEN

Mayor  
City Administrator



Data Source:  
City of St. Charles, Illinois  
Kane County, Illinois  
DuPage County, Illinois  
Coordinate System: Illinois State Plane East  
Projection: Transverse Mercator  
North American Datum 1983  
Printed on: February 1, 2019 04:03 PM

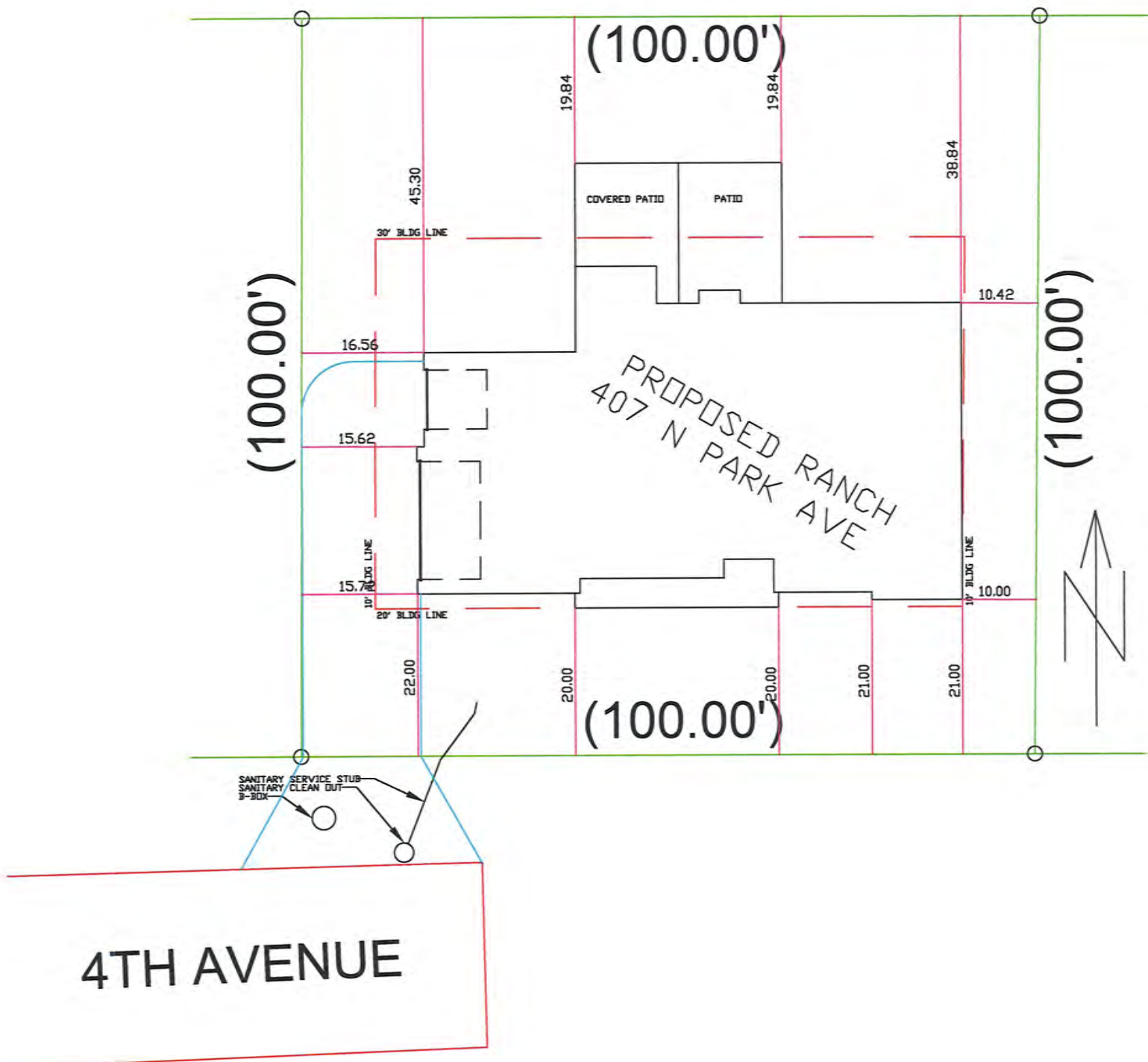


0 42 83 Feet

This work was created for planning purposes only and is provided as is, without warranty of any kind, either expressed or implied. The information represented may contain proprietary and confidential property of the City of St. Charles, Illinois. Under United States Copyright protection laws you may not use, reproduce, or distribute any part of this document without prior written permission. To obtain written permission please contact the City of St. Charles at Two East Main Street, St. Charles, IL 60174.

Revised by Precision GIS







FIRST FLOOR SQUARE FOOTAGE: 2025 SF  
 BASEMENT SQUARE FOOTAGE: 2046 SF  
 GARAGE SQUARE FOOTAGE: 880 SF

[illegible]

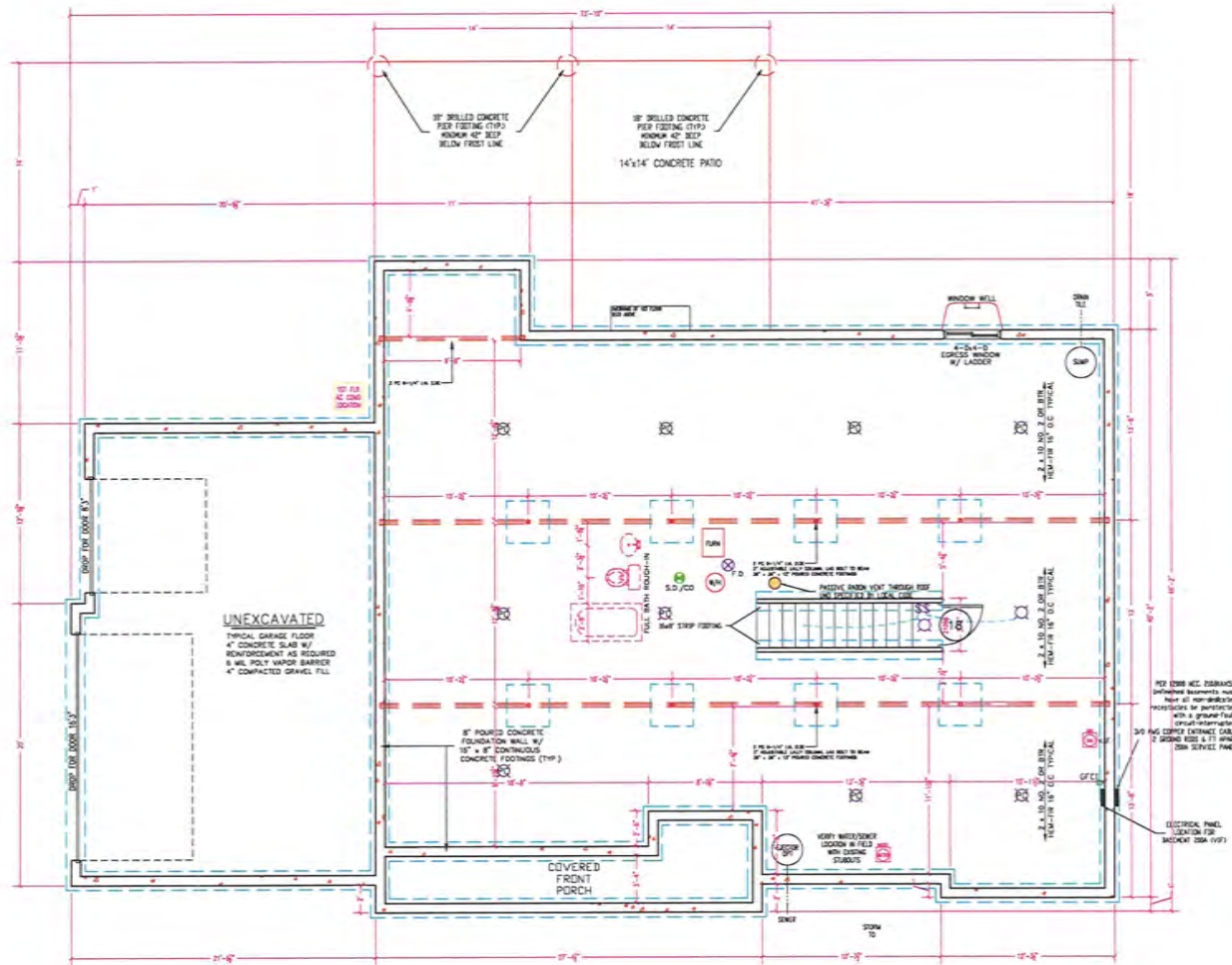
2012 INTERNATIONAL RESIDENTIAL CODE  
2011 NATIONAL ELECTRIC CODE (NEC)  
2014 STATE OF ILLINOIS PLUMBING CODE  
2015 ILLINOIS ENERGY CONSERVATION CODE  
2006 INTERNATIONAL MECHANICAL CODE

[illegible]

A1

[illegible]

A2



147111 - NCDA - 404 (2) 1  
DESIGN: 4/2015  
Project: 404-404 (2) 1  
Date: 4/20/15  
NCDG: 404-404 (2) 1  
City: 404

404 (2) 1

## ASHBURY MOD. DULANEY PLAN

Project Number

Sheet

Drawn by

Checked by

01/11

01/11

01/11

A3