 <p><b>CITY OF ST. CHARLES</b> ILLINOIS • 1834</p>	<b>HISTORIC PRESERVATION COMMISSION AGENDA ITEM EXECUTIVE SUMMARY</b>			
	<b>Agenda Item Title/Address:</b>	Preliminary Review: First St. Parking Deck screen		
	<b>Significance:</b>	Non-contributing		
	<b>Petitioner:</b>	AJ Reineking, City of St. Charles		
	<b>Project Type:</b>	Louvered screen wall		
<b>PUBLIC HEARING</b>			<b>MEETING 7/1/20</b>	<b>X</b>
<b>Agenda Item Category:</b>				
X	Preliminary Review		Grant	
	Certificate of Appropriateness (COA)		Other Commission Business	
	Landmark/District Designation		Commission Business	
<b>Attached Documents:</b>			<b>Additional Requested Documents:</b>	
Photos, photo illustrations, screen detail			None	
<b>Project Description:</b>				
<ul style="list-style-type: none"> <li>• Install an aluminum louvered screen along a portion of the parapet wall on the west elevation of the First Street parking deck.</li> <li>• The portion of the parapet wall where the screen is proposed is lower than the parapet walls around the rest of the parking deck. Due to the shorter wall height, there have been several instances where items have been dropped or thrown off the parking deck and onto the private parking lot below.</li> <li>• The screen is intended to act as both a visual and physical barrier.</li> </ul>				
<b>Staff Comments:</b>				
<b>Recommendation / Suggested Action:</b>				
<ul style="list-style-type: none"> <li>• Provide feedback on the proposed project.</li> </ul>				









#### STANDARD CONSTRUCTION

- Material: Extruded Aluminum 6063-T6
- Vertical Supports: 5" x 2" x .125" Aluminum Support Channels
- Blades 6" (152mm) deep, .081" (2.1mm) nominal wall thickness
- Blade Spacing: 6.875" (175mm) on center
- Finish: Mill

#### OPTIONAL ACCESSORIES

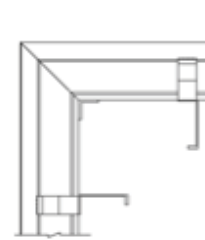
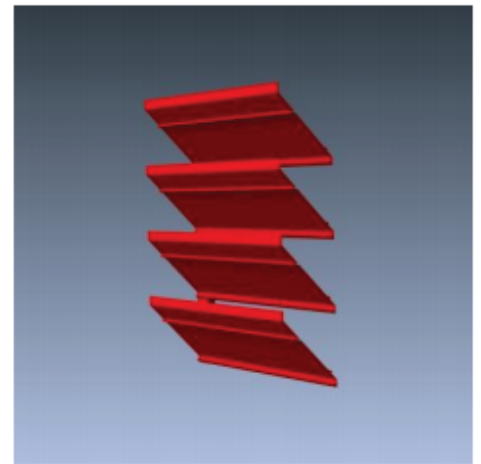
- Cap Flashing
- Hinged Access Panels
- Visible Mullions
- Invisible Mullions for continuous blade appearance

#### FINISHES

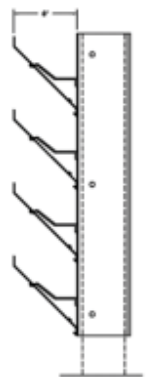
- 2 coat fluoropolymer: Kynar<sup>®</sup> 500 / Hylar<sup>®</sup> 5000 custom colors available in 70% PVDF (AAMA 2605) or 50% PVDF (AAMA 2604) formulas.
- 3 coat fluoropolymer: Kynar 500 / Hylar 5000 custom colors available in 70% PVDF (AAMA 2605) formulas.
- Anodic finishes: Class I and Class II in Clear, Light/Medium/Dark Bronze, Champagne, and Black.
- Prime coat
- Mill

#### SUGGESTED SPECIFICATIONS

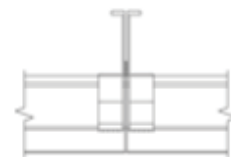
- General: Furnish and install where indicated on drawings 6" (152mm) Extruded Aluminum
- 
- Material: Extruded aluminum supports and blades shall be one piece 6063-T6 alloy. Vertical supports shall have a material thickness of .125" (3.2mm). Fixed inverted blades shall have a material thickness of .081" (2.1mm). Supports and blades shall be joined by stainless steel mechanical fastener.



Corner View



Vertical Section



Invisible Vertical Mullion