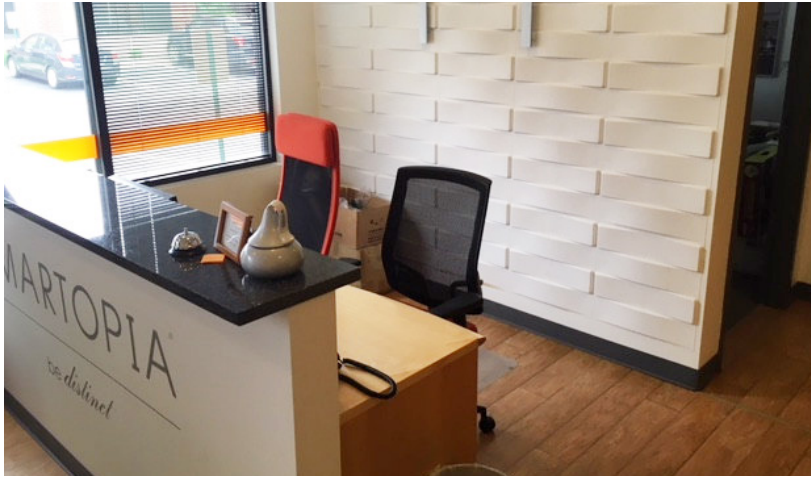


## FOR LEASE

3805 E. Main Street /// Suite H /// St. Charles, IL 60174



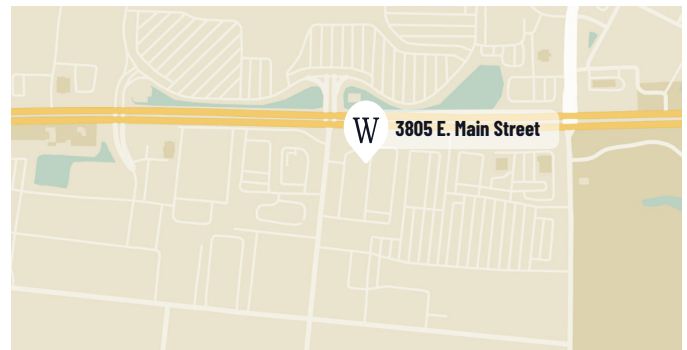
### PROPERTY OVERVIEW

This Class A, high-visibility office space is conveniently located off Route 64 and close to retail, restaurants and hotels. There's a mix of private and open bull pen style offices. Also features a large reception area, kitchenette, large conference and men's/women's washrooms.

### PROPERTY SUMMARY

Lease Rate	\$11.00 SF/YR
Available SF	3,258 SF
Lease Type	NNN
Lease Term	Negotiable
Property Type	Office

### LOCATION



### GALLERY



## CONTACT DON WICKMAN DIRECT!

If you're thinking about relocating or looking for the perfect office space, contact Wickman Properties today. What makes us different is that we think of creative ways to get your business into the perfect space. Whether it's a graduated rent, free rent or other structures, we'll find the right solution!

**DON WICKMAN**  
**PROPERTY OWNER**

**Mobile 630.319.7447**

**Office 630.377.1333**

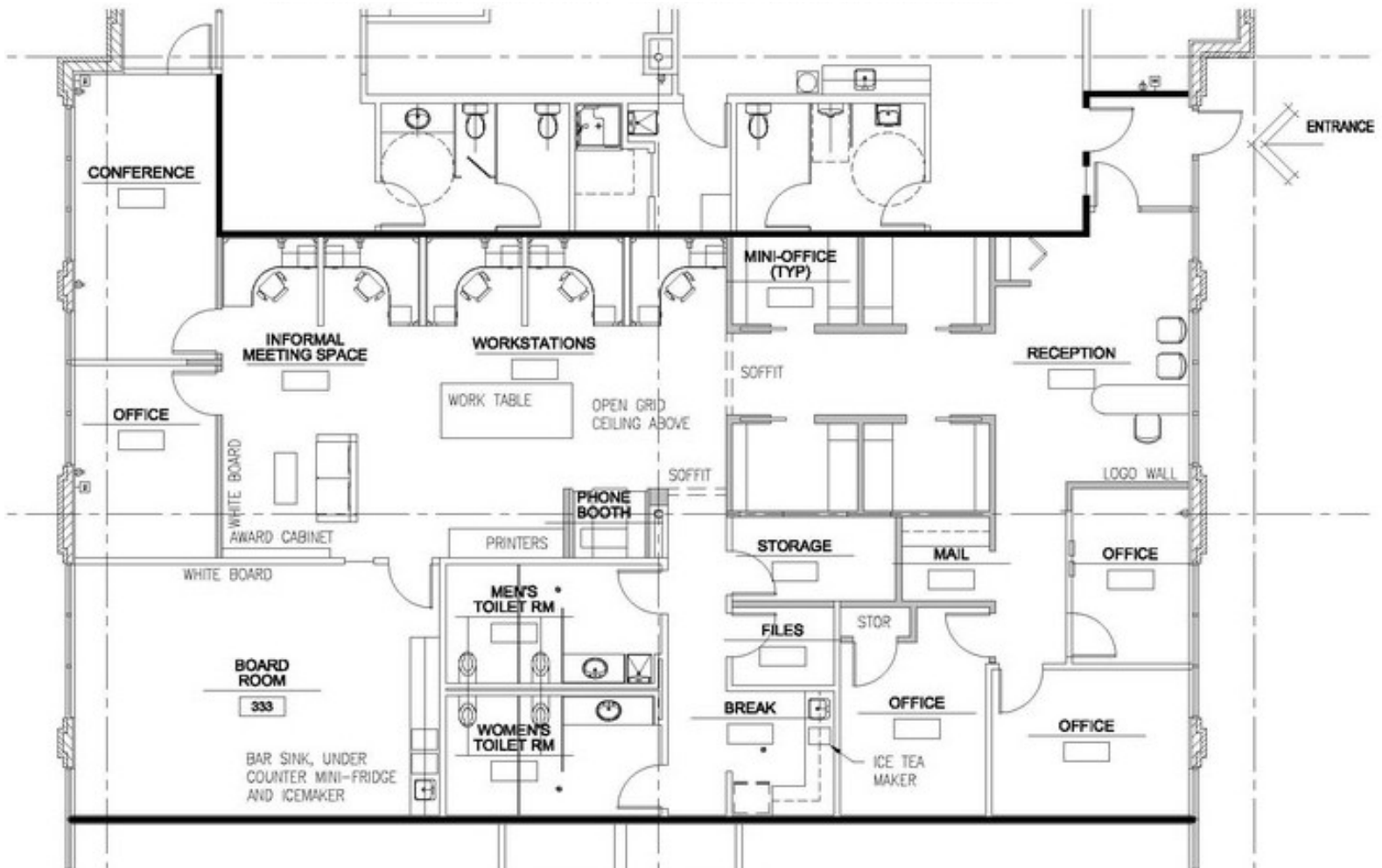
[don@wickmanproperties.com](mailto:don@wickmanproperties.com)



FOR LEASE

3805 E. Main Street /// Suite H /// St. Charles, IL 60174

## PROPERTY LAYOUT



## CONTACT DON WICKMAN DIRECT!

If you're thinking about relocating or looking for the perfect office space, contact Wickman Properties today. What makes us different is that we think of creative ways to get your business into the perfect space. Whether it's a graduated rent, free rent or other structures, we'll find the right solution!

**DON WICKMAN**  
**PROPERTY OWNER**

**Mobile 630.319.7447**

**Office 630.377.1333**

[don@wickmanproperties.com](mailto:don@wickmanproperties.com)

