

# FOR LEASE - OFFICE

425 W. MAIN STREET, ST. CHARLES, ILLINOIS 60174



REAL ESTATE BROKERAGE &  
ASSET MANAGEMENT



## TURN-KEY OFFICE SPACE AVAILABLE

- ◆ 3,268 SF SUITE AVAILABLE
- ◆ HIGH VISIBILITY AND TRAFFIC ON MAIN STREET
- ◆ CLASS "A" BUILD OUT
- ◆ WALKING DISTANCE TO DOWNTOWN RESTAURANTS AND SHOPPING
- ◆ AMPLE ON-SITE PARKING
- ◆ FURNITURE AVAILABLE
- ◆ PRIVATE RESTROOMS AND KITCHENETTE



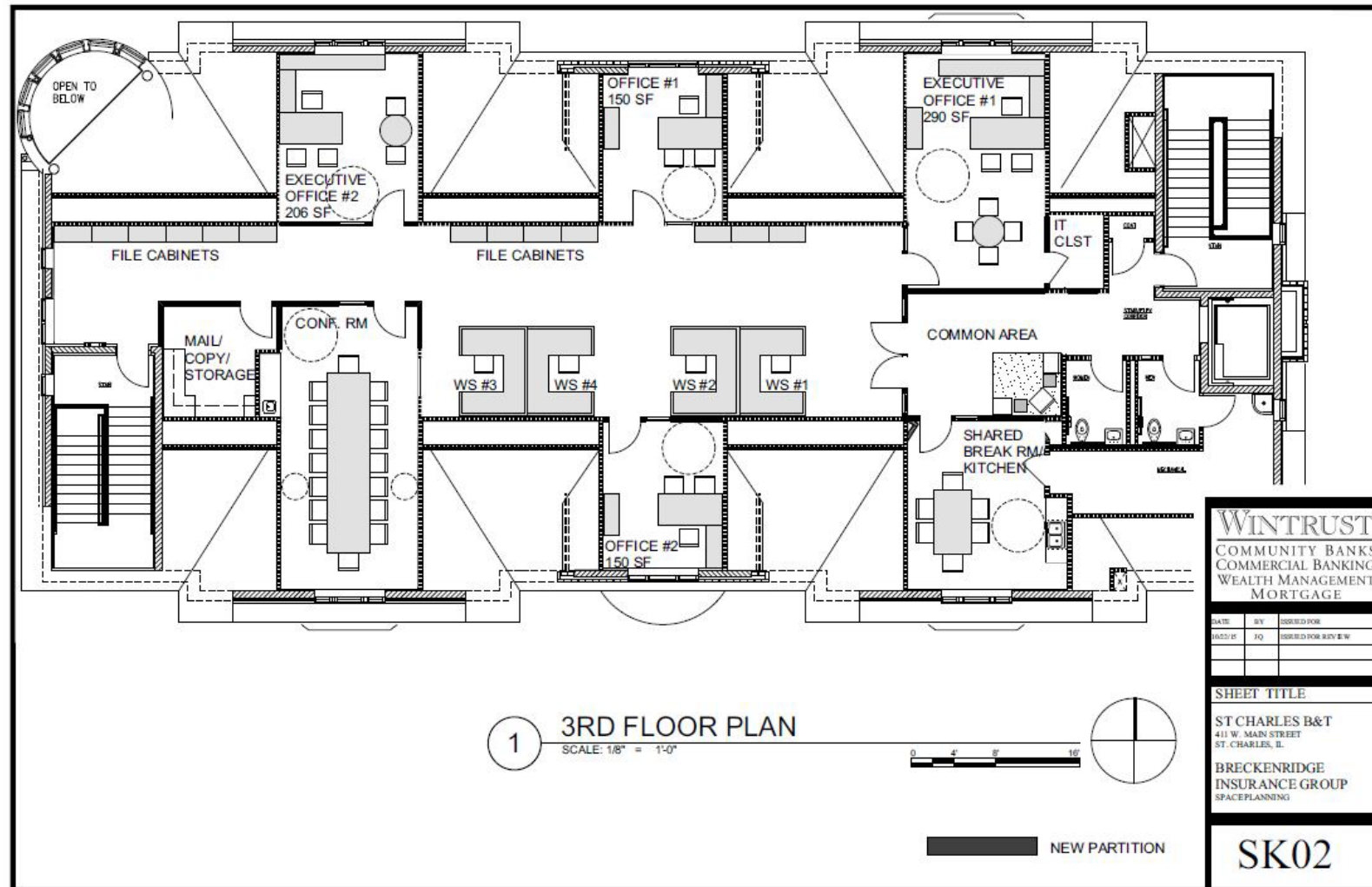
FOR MORE INFORMATION, PLEASE CONTACT:  
SHARON O'LEARY AT 630.513.0173 OR VISIT [WWW.MURRAYCOMMERCIAL.COM](http://WWW.MURRAYCOMMERCIAL.COM)

# FOR LEASE - OFFICE

425 W. MAIN STREET, ST. CHARLES, ILLINOIS 60174



REAL ESTATE BROKERAGE &  
ASSET MANAGEMENT



Third Floor Office - 3,268 SF

AGENCY DISCLOSURE: Thank you for allowing Murray Commercial the opportunity to share this information and/or show you the above-referenced property. This activity does not result in the Sales Associate acting as your agent. The Sales Associate is acting as the Designated Agent for the Owner. As a result, the Sales Associate will NOT act as a Dual Agent or will NOT be acting as an agent on your behalf. The information contained herein was obtained from sources believed to be reliable; however, Murray Commercial makes no guarantees, warranties, or representations as to the completeness or accuracy thereof. The presentation of this property is submitted subject to errors, omissions, change of price or conditions prior to sale, lease, or withdrawal without notice.

FOR MORE INFORMATION, PLEASE CONTACT:  
SHARON O'LEARY AT 630.513.0173 OR VISIT [WWW.MURRAYCOMMERCIAL.COM](http://WWW.MURRAYCOMMERCIAL.COM)