



ST. CHARLES  
SINCE 1834

## AGENDA ITEM EXECUTIVE SUMMARY

Title: EAB Control Efforts – Information Only

Presenter: Peter Suhr

*Please check appropriate box:*

<input type="checkbox"/>	Government Operations	<input checked="" type="checkbox"/>	Government Services 02.27.2012
<input type="checkbox"/>	Planning & Development	<input type="checkbox"/>	City Council
<input type="checkbox"/>	Public Hearing	<input type="checkbox"/>	

Estimated Cost:		Budgeted:	YES	<input checked="" type="checkbox"/>	NO	<input type="checkbox"/>
-----------------	--	-----------	-----	-------------------------------------	----	--------------------------

If NO, please explain how item will be funded:

**Executive Summary:**

Monthly update on EAB activities for February 2012. This update provides detailed information about the EAB infestation including; ash trees Confirmed with EAB in December 2011 & January 2012 and ash trees Proposed to be removed in the upcoming month.

**Attachments:** *(please list)*

Summary Sheet

**Recommendation / Suggested Action** *(briefly explain):*

For Information Only

<i>For office use only:</i>	<i>Agenda Item Number: 3.b</i>
-----------------------------	--------------------------------

# Emerald Ash Borer Monthly Summary Sheet

February 2012

The Emerald Ash Borer Monthly Summary Sheet is prepared each month by the Public Services Staff for each Government Services Meeting. This summary documents the Spread of EAB (Confirmed Trees), Control Measures (Removed & Treated Trees) and Planting Efforts (New Trees). Unless noted otherwise, all data listed below reflects One (1) month starting on the 1st and ending on the last day of each month. EAB Maps and an address list of Proposed Removals will be attached to this report.

## Confirmed Trees

- **217** Ash Trees were confirmed with EAB in **December 2011 & January 2012** including:
  1. 2 in the NW Quadrant
  2. 21 in the SW Quadrant
  3. 162 in the SE Quadrant
  4. 28 in the NE Quadrant
  5. 4 in the Far West

## Proposed Tree Removals

- We are proposing to remove **61** Ash Trees this upcoming month including:
  1. 1 in the NW Quadrant
  2. 41 in the SW Quadrant
  3. 7 in the SE Quadrant
  4. 12 in the NE Quadrant
  5. 0 in the Far West

## Treating & Planting Notes

None

## Additional Comments

None

# Summary Report

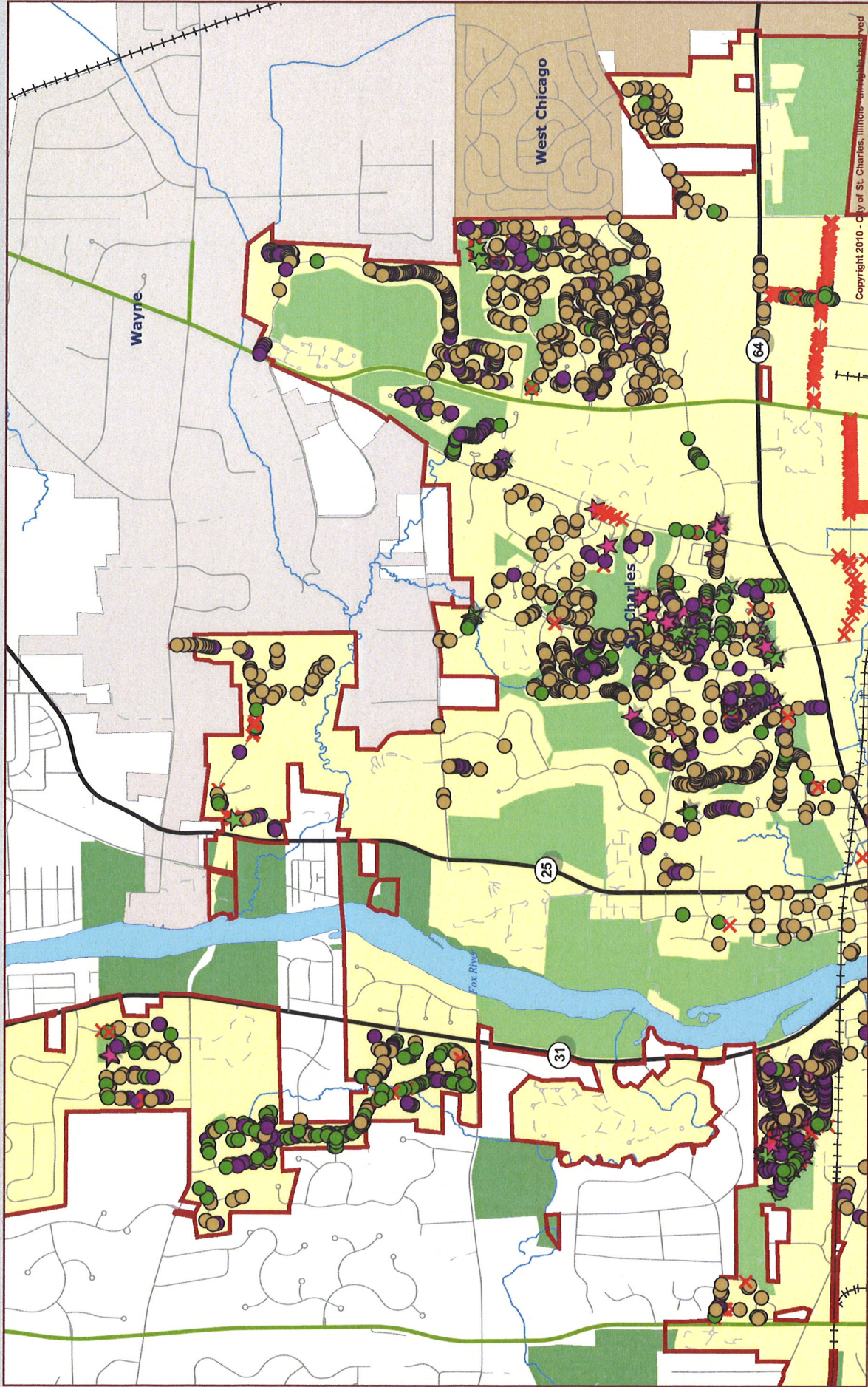
## EAB Proposed Removals, February 2012

Quadrant	Address	Street	Side	Site	Count
NE	541	Longmeadow Cir	Front	2	1
NE	600	Dunham Rd	Side	5	1
NE	600	Dunham Rd	Side	7	1
NE	600	Dunham Rd	Side	8	1
NE	1113	Keim Tr	Front	2	1
NE	1711	Allen Ln	Side	1	1
NE	1717	Waverly Cir	Front	3	1
NE	1719	Waverly Cir	Front	1	1
NE	1803	Cumberland Grn Dr	Front	1	1
NE	1813	Waverly Cir	Front	1	1
NE	2008	Waverly Cir	Front	1	1
NE	1002	Keim Tr	Front	1	1
NW	521	N. Meadow View Dr.	Front	2	1
SE	619	5th Ave /S	Side	1	1
SE	1560	Adams Ave	Front	1	1
SE	1570	Adams Ave	Front	1	1
SE	1705	Larson Ave	Front	1	1
SE	1905	Ronzheimer Ave	Front	2	1
SE	1209	Nicholas Ave	Front	1	1
SE	2006	Cambridge Dr	Front	2	1
SW	114	3rd St /S	Front	1	1
SW	119	3rd St /N	Side	3	1
SW	221	2nd St /S	Side	1	1
SW	504	Fellows St	Front	1	1
SW	504	Fellows St	Front	2	1
SW	509	Fellows St	Front	1	1
SW	509	Indiana St	Front	2	1
SW	534	14th St /S	Rear	1	1
SW	705	Fellows St	Side	2	1
SW	800	Westfield Dr	Front	2	1
SW	800	Westfield Dr	Front	3	1
SW	805	Westfield Dr	Front	2	1
SW	809	Westfield Dr	Front	1	1
SW	813	Westfield Dr	Side	1	1
SW	816	Howard St	Front	1	1
SW	816	Howard St	Front	2	1
SW	820	Fellows St	Front	1	1
SW	1003	3rd St /S	Front	1	1
SW	1003	Charleston Dr	Front	2	1
SW	1010	Charleston Dr	Front	1	1
SW	1016	Charleston Dr	Front	1	1
SW	1016	Charleston Dr	Front	2	1
SW	1031	Howard St	Front	2	1
SW	1101	Charleston Dr	Front	1	1

# Summary Report

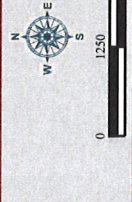
## EAB Confirmed, February 2012

Quadrant	Address	Street	Side	Site	Count
FW	503	Heritage Ct.	Side	2	1
FW	503	Valley View Dr	Side	4	1
FW	3039	Langston Circle	Front	1	1
FW	3040	Langston Circle	Side	3	1
NE	502	Longmeadow Cir	Front	2	1
NE	508	Longmeadow Cir	Front	1	1
NE	509	Longmeadow Cir	Front	2	1
NE	524	Longmeadow Cir	Front	2	1
NE	525	Longmeadow Cir	Front	2	1
NE	529	Longmeadow Cir	Front	3	1
NE	529	Longmeadow Cir	Front	4	1
NE	529	Longmeadow Cir	Front	5	1
NE	533	Longmeadow Cir	Front	1	1
NE	533	Longmeadow Cir	Front	2	1
NE	534	Longmeadow Cir	Front	1	1
NE	534	Longmeadow Cir	Front	2	1
NE	536	Longmeadow Cir	Front	1	1
NE	536	Longmeadow Cir	Front	2	1
NE	537	Longmeadow Cir	Median	5	1
NE	537	Longmeadow Cir	Median	9	1
NE	541	Longmeadow Cir	Front	1	1
NE	541	Longmeadow Cir	Front	3	1
NE	545	Longmeadow Cir	Front	2	1
NE	548	Longmeadow Cir	Front	1	1
NE	549	Longmeadow Cir	Front	1	1
NE	549	Longmeadow Cir	Front	2	1
NE	1490	Allen Ln	Front	1	1
NE	1490	Allen Ln	Front	2	1
NE	1490	Iroquois Ave	Side	2	1
NE	1502	Iroquois Ave	Front	1	1
NE	1502	Iroquois Ave	Front	4	1
NE	1002	Keim Tr	Front	1	1
NW	503	Timbers Trail	Front	1	1
NW	507	Timbers Trail	Front	1	1
SE	158	Division Ct	Front	1	1
SE	715	Lexington Ave	Front	2	1
SE	720	Lexington Ave	Front	1	1
SE	725	Lexington Ave	Front	1	1
SE	745	Lexington Ave	Front	1	1
SE	825	Lexington Ave	Side	1	1
SE	915	Lexington Ave	Front	2	1
SE	920	Lexington Ave	Front	2	1
SE	922	Liberty Ave	Side	1	1
SE	923	Spring Ave	Front	1	1



Copyright 2010 - City of St. Charles, Illinois

City of St. Charles, Illinois  
 Kane County, Illinois  
 DuPage County, Illinois  
 Projection: Transverse Mercator  
 Coordinate System: Illinois State Plane East  
 North American Datum 1983  
 Printed on February 28, 2012 12:08:18 PM CST

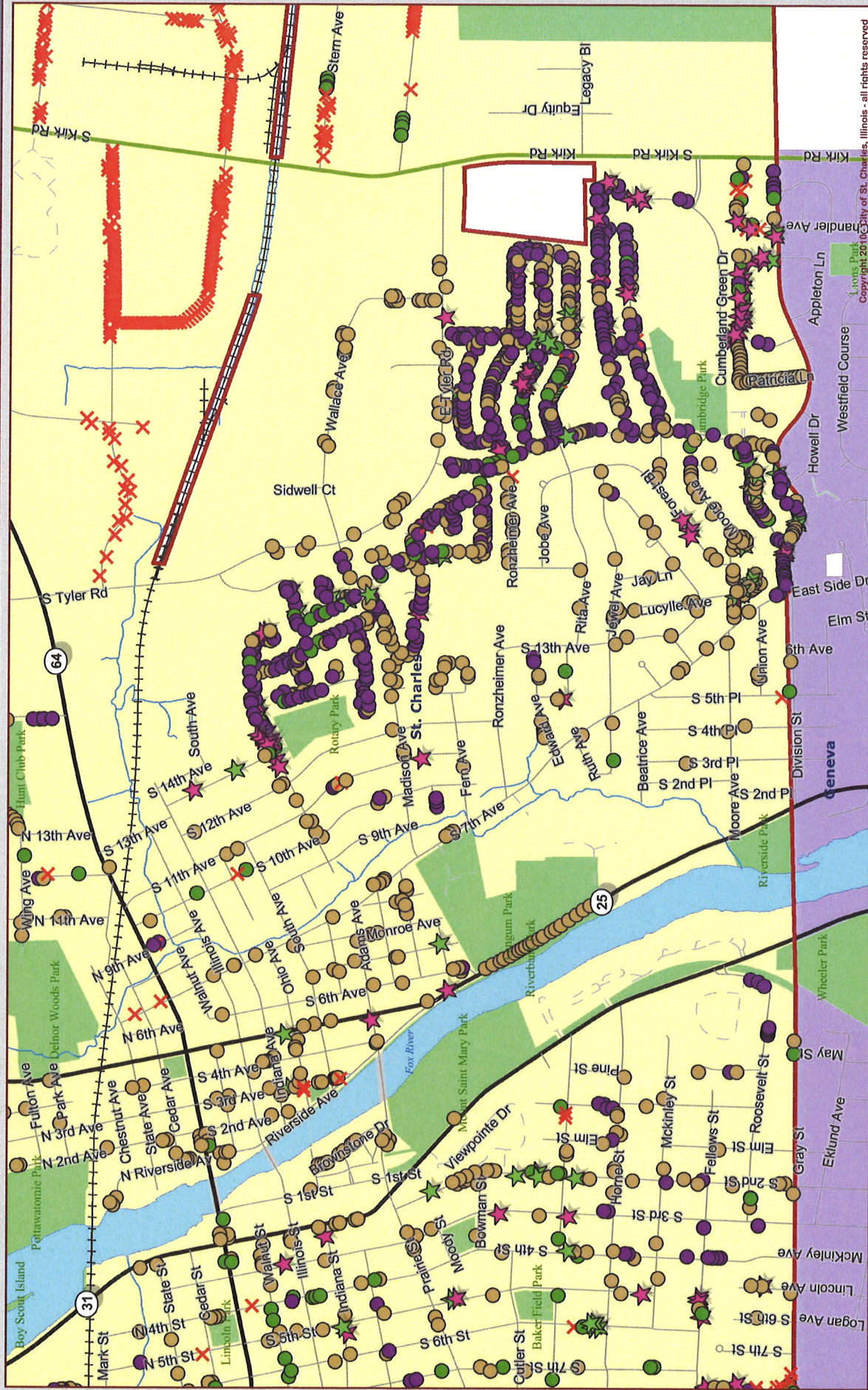


- EAB Confirmed
- ★ Proposed Removal
- Replanted
- ★ Approved Removal
- ✕ Removed
- Ash Trees

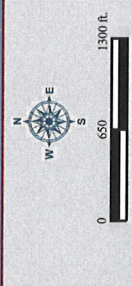
Notes: February 2012 GSC EAB Map - NE & NW Area 1

This work was created for planning purposes only and does not constitute a warranty. The information represented may contain proprietary and confidential information. The information is provided under United States Copyright protection laws you may not use, reproduce, or distribute any part of this document without prior written permission to obtain from the City of St. Charles, IL 60174, at Two East Main Street, St. Charles, IL 60174.

# Emerald Ash Borer Status



Map Source: St. Charles, Illinois  
 Kane County, Illinois  
 DuPage County, Illinois  
 Projection: Transverse Mercator  
 Coordinate System: Illinois State Plane East  
 North American Datum 1983  
 Printed on February 4, 2012 12:52:23 PM CST

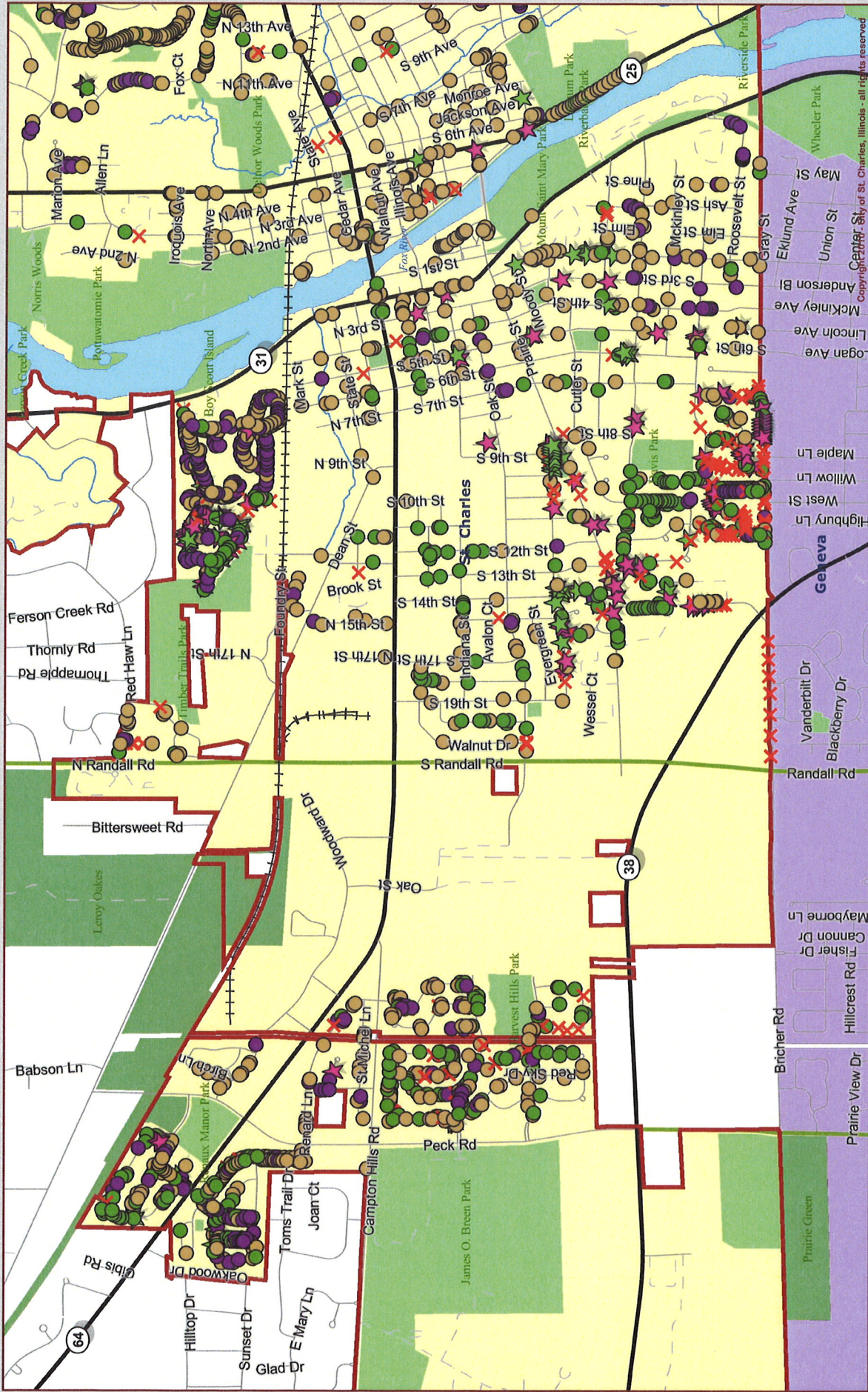


- EAB Confirmed
- ★ Proposed Removal
- ★ Approved Removal
- ✕ Removed
- Replanted
- Ash Trees

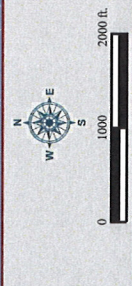
Notes: February 2012 GSC EAB Map - SE Area  
 2

This work was created for planning purposes only and is provided as is, without warranty of any kind, represented by the City of St. Charles, Illinois. The City of St. Charles, Illinois, and its employees do not use, reproduce, or distribute any part of this document without prior written permission. To obtain written permission please contact the City of St. Charles at: 100 East Main Street, St. Charles, IL 60171.

# Emerald Ash Borer Status



Data Source: St. Charles, Illinois  
 Kane County, Illinois  
 DuPage County, Illinois  
 Projection: Transverse Mercator  
 Coordinate System: Illinois State Plane East  
 North American Datum 1983  
 Printed on February 9, 2012 12:26:13 PM CST



- EAB Confirmed
- Proposed Removal
- ★ Replanted
- ★ Ash Trees
- ✕ Removed
- Approved Removal

Notes: February 2012 GSC EAB Map - SW Area  
 3

This work was created for planning purposes only, and is not intended to be used as a legal document. It is provided as a service to the community and does not represent any official action of the City of St. Charles, Illinois. It may not be used, reproduced, or distributed in any form without the prior written permission of the City of St. Charles, Illinois. For more information, contact the City of St. Charles, Illinois at Two East Main Street, St. Charles, IL 60174.