



ST. CHARLES  
SINCE 1834

## AGENDA ITEM EXECUTIVE SUMMARY

Title: EAB Control Efforts – Information Only

Presenter: Peter Suhr

*Please check appropriate box:*

<input type="checkbox"/>	Government Operations	<input checked="" type="checkbox"/>	Government Services 05.29.2012
<input type="checkbox"/>	Planning & Development	<input type="checkbox"/>	City Council
<input type="checkbox"/>	Public Hearing	<input type="checkbox"/>	

Estimated Cost:		Budgeted:	YES	<input checked="" type="checkbox"/>	NO	
-----------------	--	-----------	-----	-------------------------------------	----	--

If NO, please explain how item will be funded:

### Executive Summary:

Monthly update on EAB activities for May 2012. This update provides detailed information about the EAB infestation including; any ash tree confirmed with EAB in February, March and April 2012 and ash trees proposed to be removed in the upcoming month.

### Attachments: *(please list)*

Summary Sheet

### Recommendation / Suggested Action *(briefly explain):*

For Information Only

<i>For office use only:</i>	<i>Agenda Item Number: 3.c</i>
-----------------------------	--------------------------------

# Emerald Ash Borer Monthly Summary Sheet

May 2012

The Emerald Ash Borer Monthly Summary Sheet is prepared each month by the Public Services Staff for each Government Services Meeting. This summary documents the Spread of EAB (Confirmed Trees), Control Measures (Removed & Treated Trees) and Planting Efforts (New Trees). Unless noted otherwise, all data listed below reflects One (1) month starting on the 1st and ending on the last day of each month. EAB Maps and an address list of Proposed Removals will be attached to this report.

## Confirmed Trees

- **561** Ash Trees were confirmed with EAB in **February, March & April 2012** including:
  1. 0 in the NW Quadrant
  2. 5 in the SW Quadrant
  3. 60 in the SE Quadrant
  4. 486 in the NE Quadrant
  5. 10 in the Far West

## Proposed Tree Removals

- We are proposing to remove **126** Ash Trees this upcoming month including:
  1. 1 in the NW Quadrant
  2. 10 in the SW Quadrant
  3. 31 in the SE Quadrant
  4. 75 in the NE Quadrant
  5. 9 in the Far West

## Treating & Planting Notes

Spring planting will be complete by June 1<sup>st</sup> with over 600 new trees.

## Additional Comments

None

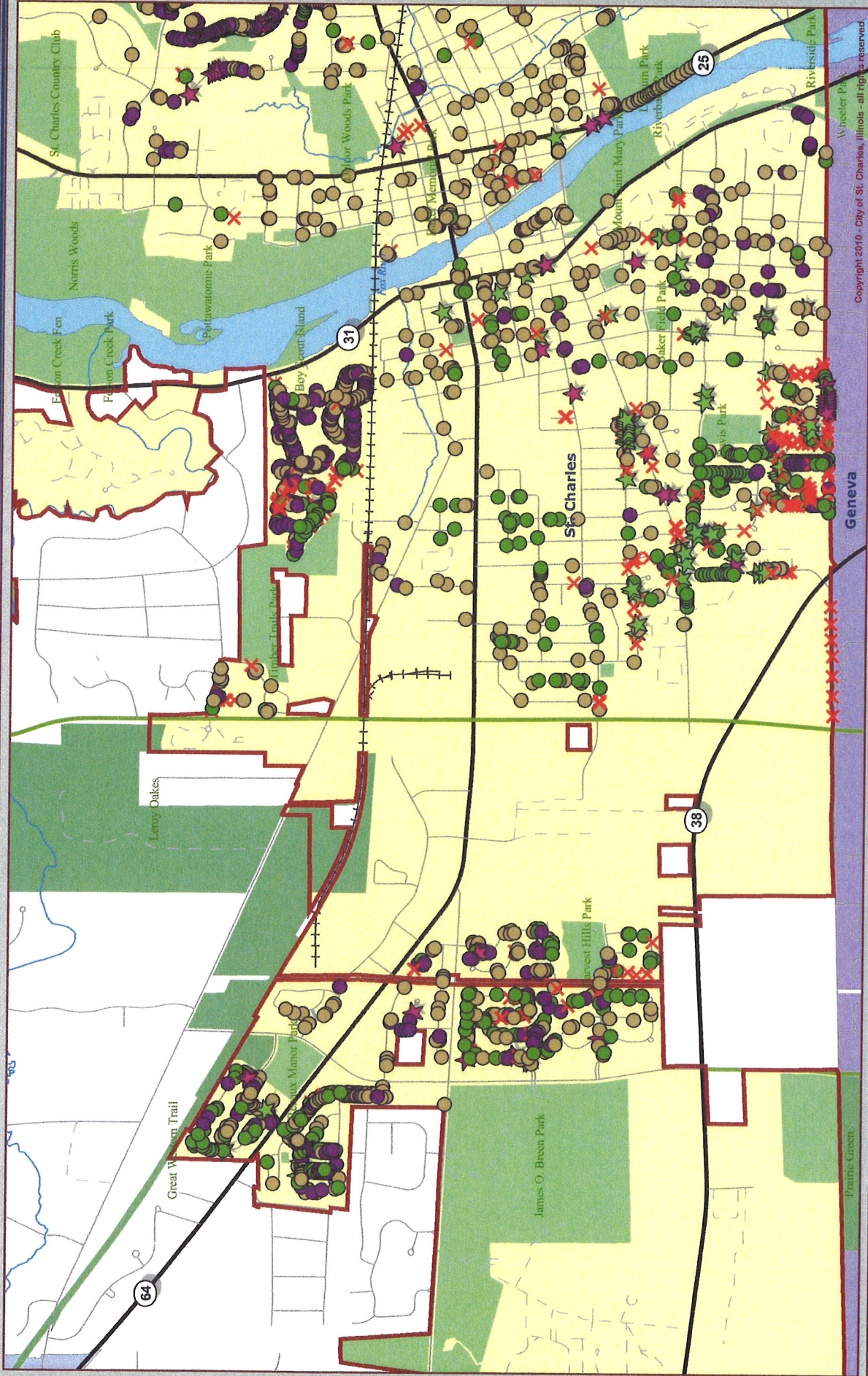




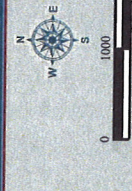
**City of St. Charles, Illinois**  
 120 East Main Street, St. Charles, IL 60174-0841  
 Phone: 630-537-5400 Fax: 630-537-4140 www.stcharles.gov

# Precision GIS

**DONALD P. DEWITTE** Mayor  
**BRIAN TOWNSEND** City Administrator



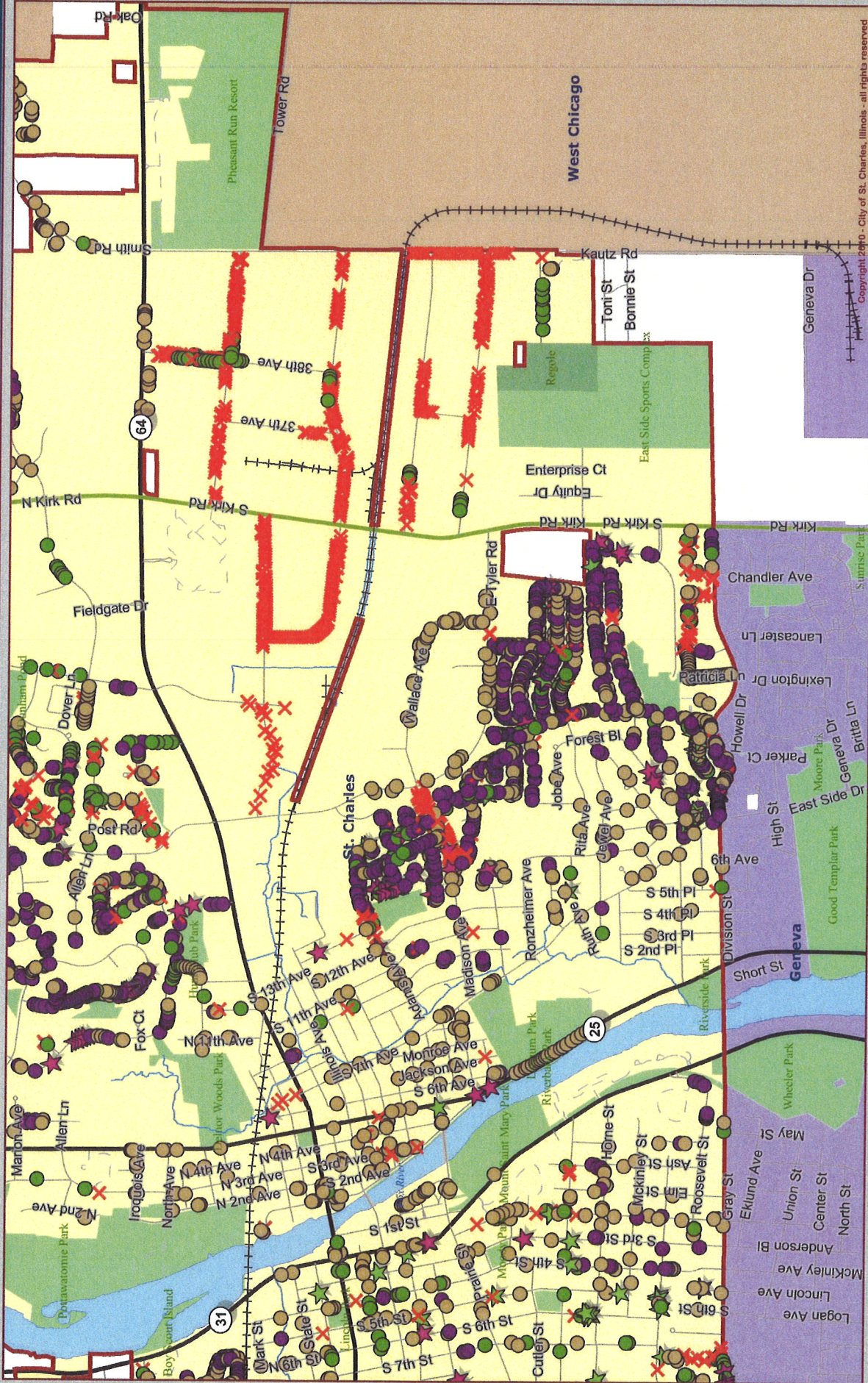
**Data Source:**  
 City of St. Charles, Illinois  
 Kane County, Illinois  
 DuPage County, Illinois  
**Projection:** Transverse Mercator  
**Coordinate System:** Illinois State Plane East  
**Coordinate System Datum:** 1983  
 Modification: May 16, 2012 10:46:02 AM CEST



**Notes:** May 2012 GSC EAB Map - SW & FW  
 Area 1

**Copyright 2010 - City of St. Charles, Illinois - all rights reserved**  
 This work was created for planning purposes only and is provided as is, without warranty of any kind, expressed or implied. The information contained herein is the property of the City of St. Charles, Illinois. The information is not to be used for any other purpose without the written permission of the City of St. Charles. For more information, please contact the City of St. Charles at: Two East Main Street, St. Charles, IL 60174.



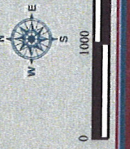


Copyright 2010 - City of St. Charles, Illinois - all rights reserved

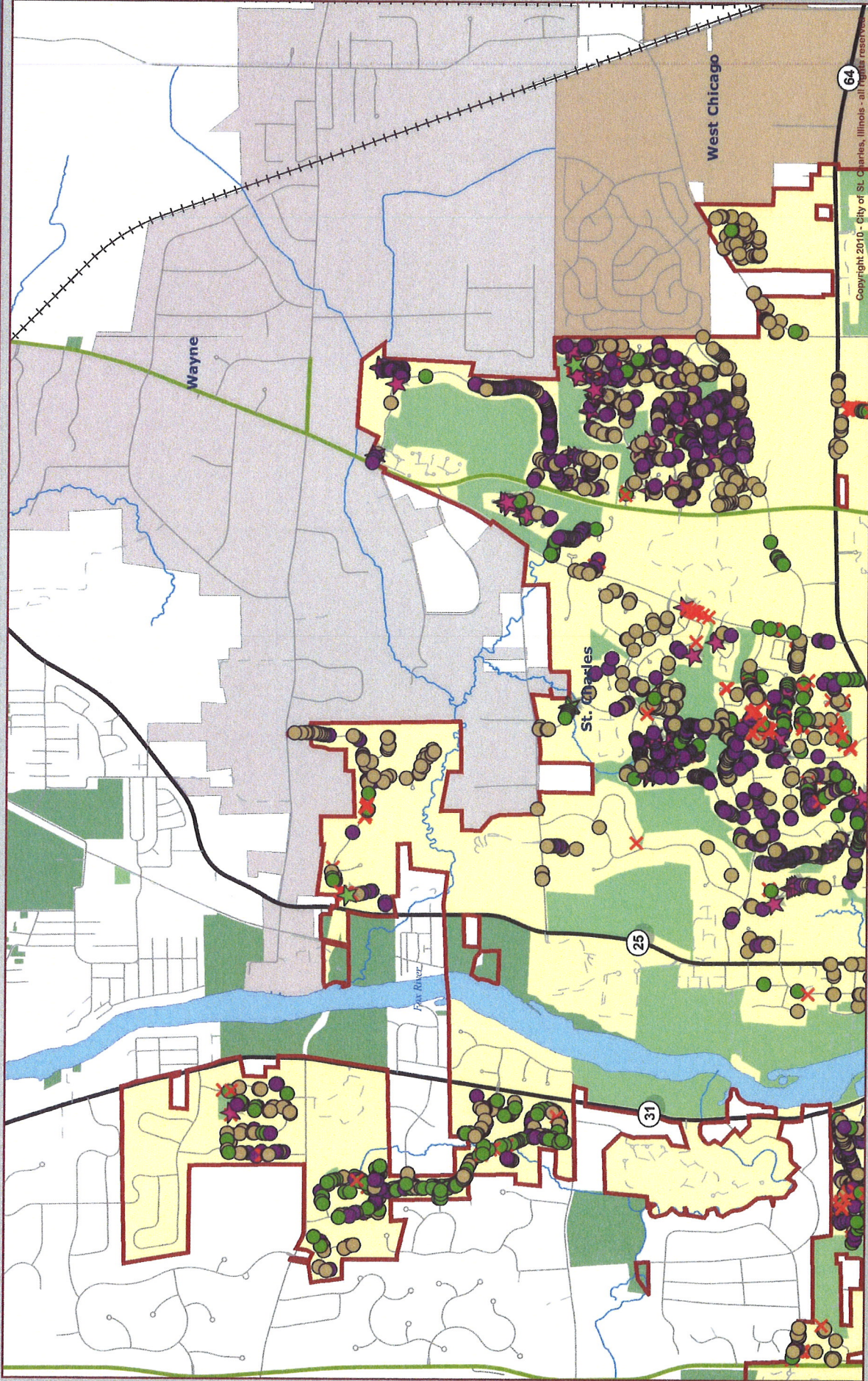
Notes: May 2012 GSC EAB Map - SE Area 2

This work was created for planning purposes only and is provided as is, without warranty of any kind, either expressed or implied. The information contained herein is the property of the City of St. Charles, Illinois. Under United States Copyright protection laws you may not reproduce or distribute this information without the written permission of the City of St. Charles. For more information or to obtain written permission please contact the City of St. Charles at: Two East Main Street, St. Charles, IL 60174.

City of St. Charles, Illinois  
Kane County, Illinois  
DuPage County, Illinois  
Projection: Transverse Mercator  
Coordinate System: Illinois State Plane East  
North American Datum: 1983  
Printed on May 16, 2012 10:38 AM CDT







Copyright 2010 - City of St. Charles, Illinois - all rights reserved.

Notes: May 2012 GSC EAB Map - NW & NE Area 3

This work was created for planning purposes only and is provided as is, without warranty of any kind. The information contained herein is for informational purposes only and is not intended to be used for any other purpose. The information is the property of the City of St. Charles, Illinois. Under United States Copyright protection, laws you may not reproduce, distribute, or otherwise use the information without prior written permission. To obtain written permission please contact the City of St. Charles at: Two East Main Street, St. Charles, IL 60174.

City of St. Charles, Illinois  
 Kane County, Illinois  
 DuPage County, Illinois

Projection: Transverse Mercator  
 Coordinate System: Illinois State Plane East  
 North American Datum: 1983  
 Printed on May 16, 2012 10:54:59 AM CDT



Summary Report

EAB Proposed Removals, February thru April, 2012

Quadrant	Address	Street	Side	Site	Condition	Maintenance	DBH	Species
FW	200	Grand Ridge Rd	Side	2	EAB	Proposed Removal-FW	3	Ash
FW	322	Grand Ridge Rd	Front	1	EAB	Proposed Removal-FW	3	Ash
FW	446	Horizon Dr. West	Front	1	EAB	Proposed Removal-FW	3	Ash
FW	3207	Raphael Ct	Front	1	EAB FW	Proposed Removal-FW	5	Ash
FW	202	Sunbury Dr	Front	2	EAB	Proposed Removal-FW	3	Ash
FW	223	Sunbury Dr	Front	1	EAB	Proposed Removal-FW	3	Ash
FW	272	Valley View Dr	Front	1	EAB	Proposed Removal-FW	6	Ash
FW	3428	Voltaire Ln	Side	1	EAB	Proposed Removal-FW	3	Ash
FW	3428	Voltaire Ln	Side	2	EAB	Proposed Removal-FW	3	Ash
NE	3101	Blackhawk Tr	Front	3	EAB	Proposed Removal-NE	12	Ash
NE	3208	Charlemagne Ln	Median	2	EAB	Proposed Removal-NE	10	Ash
NE	1940	Cool Creek Dr	Front	1	EAB	Proposed Removal-NE	3	Ash
NE	1940	Cool Creek Dr	Front	2	EAB	Proposed Removal-NE	3	Ash
NE	1965	Cool Creek Dr	Front	1	EAB	Proposed Removal-NE	2	Ash
NE	1975	Cool Creek Dr	Front	1	EAB	Proposed Removal-NE	2	Ash
NE	24	Dunham Pl	Front	1	EAB	Proposed Removal-NE	18	Ash
NE	3001	E. Francis Cir	Front	2	EAB	Proposed Removal-NE	3	Ash
NE	1725	Forest Ridge Rd	Front	1	EAB	Proposed Removal-NE	10	Ash
NE	3210	Fox Hunt Ln	Front	2	EAB	Proposed Removal-NE	8	Ash
NE	87	Foxwood Ln	Front	1	EAB	Proposed Removal-NE	13	Ash
NE	1302	Hawkins Ct	Front	3	EAB	Proposed Removal-NE	12	Ash
NE	1306	Hawkins Ct	Front	1	EAB	Proposed Removal-NE	13	Ash
NE	1306	Hawkins Ct	Front	2	EAB	Proposed Removal-NE	14	Ash
NE	1306	Hawkins Ct	Front	3	EAB	Proposed Removal-NE	12	Ash
NE	1308	Hawkins Ct	Front	1	EAB	Proposed Removal-NE	9	Ash
NE	1308	Hawkins Ct	Front	3	EAB	Proposed Removal-NE	11	Ash
NE	1310	Hawkins Ct	Front	1	EAB	Proposed Removal-NE	12	Ash
NE	1311	Hawkins Ct	Front	3	EAB	Proposed Removal-NE	11	Ash
NE	139	Hunt Club Dr	Front	1	EAB	Proposed Removal-NE	4	Ash
NE	139	Hunt Club Dr	Front	7	EAB	Proposed Removal-NE	6	Ash
NE	1501	Keim Ct	Front	1	EAB	Proposed Removal-NE	6	Ash
NE	1501	Keim Ct	Front	2	EAB	Proposed Removal-NE	7	Ash

Summary Report  
EAB Proposed Removals, February thru April, 2012

Quadrant	Address	Street	Side	Site	Condition	Maintenance	DBH	Species
NE	1501	Keim Ct	Side	3	EAB	Proposed Removal-NE	10	Ash Cimmaron
NE	3101	King Alford Ct	Front	1	EAB	Proposed Removal-NE	3	Ash Marshall Seedless Green
NE	3101	King Alford Ct	Front	2	EAB	Proposed Removal-NE	3	Ash Marshall Seedless Green
NE	2702	King Richard Cir	Front	1	EAB	Proposed Removal-NE	5	Ash Marshall Seedless Green
NE	3006	King Richard Cir	Front	3	EAB	Proposed Removal-NE	5	Ash Patmore
NE	3013	King Richard Cir	Front	1	EAB	Proposed Removal-NE	5	Ash Patmore
NE	3013	King Richard Cir	Front	2	EAB	Proposed Removal-NE	5	Ash Patmore
NE	520	Longmeadow Cir	Front	1	EAB	Proposed Removal-NE	10	Ash Cimmaron
NE	3434	Majestic Oaks Dr	Front	1	EAB	Proposed Removal-NE	3	Ash Summit Green
NE	3434	Majestic Oaks Dr	Front	3	EAB	Proposed Removal-NE	3	Ash Summit Green
NE	3510	Majestic Oaks Dr	Front	1	EAB	Proposed Removal-NE	2	Ash Windy City White
NE	3525	Majestic Oaks Dr	Side	1	EAB	Proposed Removal-NE	3	Ash Autumn Purple
NE	3525	Majestic Oaks Dr	Side	2	EAB	Proposed Removal-NE	3	Ash Autumn Purple
NE	3525	Majestic Oaks Dr	Side	3	EAB	Proposed Removal-NE	3	Ash Autumn Purple
NE	3525	Majestic Oaks Dr	Side	5	EAB	Proposed Removal-NE	3	Ash Autumn Purple
NE	3020	Majestic Oaks Ln	Front	1	EAB	Proposed Removal-NE	6	Ash Marshall Seedless Green
NE	3020	Majestic Oaks Ln	Front	2	EAB	Proposed Removal-NE	6	Ash Marshall Seedless Green
NE	765	Persimmon Dr	Front	1	EAB	Proposed Removal-NE	12	Ash Cimmaron
NE	765	Persimmon Dr	Front	2	EAB	Proposed Removal-NE	12	Ash Cimmaron
NE	765	Persimmon Dr	Front	3	EAB	Proposed Removal-NE	12	Ash Cimmaron
NE	765	Persimmon Dr	Front	4	EAB	Proposed Removal-NE	11	Ash Cimmaron
NE	925	Persimmon Dr	Front	2	EAB	Proposed Removal-NE	14	Ash Cimmaron
NE	3703	Queen Elizabeth Ct	Front	3	EAB	Proposed Removal-NE	5	Ash Patmore
NE	3705	Queen Elizabeth Ct	Front	2	EAB	Proposed Removal-NE	4	Ash Marshall Seedless Green
NE	2607	Royal Fox Dr	Front	1	EAB	Proposed Removal-NE	3	Ash Marshall Seedless Green
NE	2607	Royal Fox Dr	Front	2	EAB	Proposed Removal-NE	6	Ash Marshall Seedless Green
NE	2607	Royal Fox Dr	Side	1	EAB	Proposed Removal-NE	3	Ash Marshall Seedless Green
NE	4202	Royal Fox Dr	Front	1	EAB	Proposed Removal-NE	6	Ash Cimmaron
NE	4315	Royal Fox Dr	Median	4	EAB	Proposed Removal-NE	12	Ash Cimmaron
NE	2704	Royal Kings Ct	Side	3	EAB	Proposed Removal-NE	7	Ash Cimmaron
NE	2701	Royal Lytham Dr	Side	1	EAB	Proposed Removal-NE	5	Ash Cimmaron
NE	2709	Royal Lytham Dr	Front	1	EAB	Proposed Removal-NE	3	Ash Cimmaron

Summary Report  
EAB Proposed Removals, February thru April, 2012

Quadrant	Address	Street	Side	Site	Condition	Maintenance	DBH	Species
NE	2711	Royal Lytham Dr	Side	1	EAB	Proposed Removal-NE	5	Ash Cimmaron
NE	4117	Royal Troon Ct	Front	1	EAB	Proposed Removal-NE	8	Ash Cimmaron
NE	4119	Royal Troon Ct	Front	1	EAB	Proposed Removal-NE	8	Ash Cimmaron
NE	517	Steeplechase Rd	Front	2	EAB	Proposed Removal-NE	9	Ash Cimmaron
NE	610	Steeplechase Rd	Front	1	EAB	Proposed Removal-NE	7	Ash Cimmaron
NE	610	Steeplechase Rd	Front	2	EAB	Proposed Removal-NE	8	Ash Cimmaron
NE	610	Steeplechase Rd	Front	3	EAB	Proposed Removal-NE	7	Ash Cimmaron
NE	3106	Turnberry Rd	Front	3	EAB	Proposed Removal-NE	5	Ash Rosehill White
NE	3108	Turnberry Rd	Front	2	EAB	Proposed Removal-NE	7	Ash Rosehill White
NE	616	Tyler Rd /N	Front	1	EAB	Proposed Removal-NE	8	Ash Cimmaron
NE	616	Tyler Rd /N	Front	2	EAB	Proposed Removal-NE	8	Ash Cimmaron
NE	1301	W. Francis Cir	Front	1	EAB	Proposed Removal-NE	3	Ash Rosehill White
NE	1217	Winners Cup Cir	Side	2	EAB	Proposed Removal-NE	7	Ash Cimmaron
NE	1319	Winners Cup Cir	Front	1	EAB	Proposed Removal-NE	9	Ash Cimmaron
NE	1319	Winners Cup Cir	Front	2	EAB	Proposed Removal-NE	7	Ash Cimmaron
NE	1401	Winners Cup Cir	Front	1	EAB	Proposed Removal-NE	10	Ash Cimmaron
NE	1402	Winners Cup Cir	Front	2	EAB	Proposed Removal-NE	9	Ash Cimmaron
NE	1509	Winners Cup Cir	Front	1	EAB	Proposed Removal-NE	9	Ash Cimmaron
NE	1605	Winners Cup Cir	Front	1	EAB	Proposed Removal-NE	8	Ash Cimmaron
NE	1606	Winners Cup Cir	Front	3	EAB	Proposed Removal-NE	9	Ash Cimmaron
SE	2002	Cumberland Grn Dr	Front	1	EAB NE	Proposed Removal-NE	11	Ash Cimmaron
NW	110	Carrol Rd	Front	1	EAB	Proposed Removal-NW	16	Ash Cimmaron
SE	822	5th Ave /S	Front	1	EAB	Proposed Removal-SE	28	Ash Cimmaron
SE	1216	Adams Ave	Side	1	EAB	Proposed Removal-SE	3	Ash Patmore
SE	1904	Cambridge Dr	Front	2	EAB	Proposed Removal-SE	13	Ash Cimmaron
SE	1801	Cumberland Grn Dr	Front	2	EAB SE	Proposed Removal-SE	16	Ash Cimmaron
SE	1802	Cumberland Grn Dr	Front	1	EAB SE	Proposed Removal-SE	10	Ash Cimmaron
SE	1908	Forrest Blvd	Front	1	EAB	Proposed Removal-SE	17	Ash Cimmaron
SE	1913	Forrest Blvd	Front	1	EAB	Proposed Removal-SE	14	Ash Cimmaron
SE	1921	Forrest Blvd	Front	1	EAB SE	Proposed Removal-SE	18	Ash Cimmaron
SE	1137	Hidden Glen Circle	Front	1	EAB	Proposed Removal-SE	3	Ash Rosehill White
SE	922	Independence Ave	Front	1	EAB SE	Proposed Removal-SE	25	Ash Cimmaron

Summary Report  
EAB Proposed Removals, February thru April, 2012

Quadrant	Address	Street	Side	Site	Condition	Maintenance	DBH	Species
SE	1336	Lancaster Ave	Front	1	EAB SE	Proposed Removal-SE	21	Ash Cimmarron
SE	1703	Larson Ave	Front	2	EAB	Proposed Removal-SE	16	Ash Cimmarron
SE	1704	Larson Ave	Front	2	EAB FW	Proposed Removal-SE	16	Ash Cimmarron
SE	1708	Larson Ave	Front	2	EAB	Proposed Removal-SE	16	Ash Cimmarron
SE	705	Liberty Ave	Front	1	EAB	Proposed Removal-SE	16	Ash Cimmarron
SE	720	Liberty Ave	Front	1	EAB	Proposed Removal-SE	16	Ash Cimmarron
SE	725	Liberty Ave	Front	1	EAB	Proposed Removal-SE	25	Ash Cimmarron
SE	730	Liberty Ave	Front	1	EAB	Proposed Removal-SE	22	Ash Cimmarron
SE	735	Liberty Ave	Front	3	EAB	Proposed Removal-SE	19	Ash Cimmarron
SE	740	Liberty Ave	Front	1	EAB	Proposed Removal-SE	20	Ash Cimmarron
SE	802	Liberty Ave	Front	1	EAB	Proposed Removal-SE	16	Ash Cimmarron
SE	802	Liberty Ave	Front	2	EAB	Proposed Removal-SE	16	Ash Cimmarron
SE	812	Liberty Ave	Front	1	EAB	Proposed Removal-SE	15	Ash Cimmarron
SE	1449	Liberty Ct	Front	2	EAB	Proposed Removal-SE	16	Ash Cimmarron
SE	1819	Lucille Ct	Front	1	EAB	Proposed Removal-SE	4	Ash Cimmarron
SE	1414	Madison Ave	Front	1	EAB	Proposed Removal-SE	12	Ash Cimmarron
SE	914	Riverside Ave	Front	1	EAB	Proposed Removal-SE	30	Ash Cimmarron
SE	1700	Ronzheimer Ave	Front	1	EAB	Proposed Removal-SE	15	Ash Cimmarron
SE	608	State Ave	Front	2	EAB	Proposed Removal-SE	10	Ash Cimmarron
SE	1454	Weber Rd	Front	1	EAB	Proposed Removal-SE	13	Ash Cimmarron
SW	404	13th Ave /S	Front	1	EAB	Proposed Removal-SE	13	Ash Cimmarron
SW	345	2nd St /S	Front	1	EAB	Proposed Removal-SW	8	Ash Cimmarron
SW	345	2nd St /S	Front	2	EAB	Proposed Removal-SW	9	Ash Cimmarron
SW	815	3rd St /S	Front	1	EAB SW	Proposed Removal-SW	10	Ash Cimmarron
SW	1414	5th St /S	Front	1	EAB SW	Proposed Removal-SW	8	Ash Cimmarron
SW	1301	Horne St	Side	3	EAB SW	Proposed Removal-SW	20	Ash Cimmarron
SW	521	Indiana St	Side	6	EAB	Proposed Removal-SW	13	Ash Cimmarron
SW	610	Katherine St	Front	1	EAB	Proposed Removal-SW	14	Ash Cimmarron
SW	610	Katherine St	Side	1	EAB	Proposed Removal-SW	2	Ash Cimmarron
SW	725	Oak St	Side	1	EAB	Proposed Removal-SW	31	Ash Summit Green
<b>Total EAB Proposed Removals (February thru April, 2012):</b>							<b>126</b>	



Summary Report

EAB Confirmed, February through April, 2012

Quadrant	Address	Street	Side	Site	Confirmed Date			Condition	Maintenance	DBH	Species	
					MM	DD	YV					
NE	3201	Charlemagne Ln	Side	1	2	15	2012	EAB NE	EAB TREATING	12	Ash	Cimmaron
NE	3201	Charlemagne Ln	Side	3	2	15	2012	EAB NE	EAB TREATING	13	Ash	Cimmaron
NE	3518	Charlemagne Ln	Front	1	2	15	2012	EAB	EAB TREATING	7	Ash	Cimmaron
NE	1701	Essex Ct	Side	3	2	15	2012	EAB NE	EAB TREATING	12	Ash	Rosehill White
NE	1315	Fox Chase Blvd	Front	2	2	15	2012	EAB NE	EAB TREATING	7	Ash	Cimmaron
NE	3301	Fox Hunt Ln	Front	1	2	15	2012	EAB NE	EAB TREATING	9	Ash	Cimmaron
NE	1201	Keim Tr	Front	1	2	15	2012	EAB	EAB TREATING	8	Ash	Cimmaron
NE	1201	Keim Tr	Front	2	2	15	2012	EAB	EAB TREATING	8	Ash	Cimmaron
NE	1201	Keim Tr	Front	3	2	15	2012	EAB	EAB TREATING	8	Ash	Cimmaron
NE	1201	Keim Tr	Front	4	2	15	2012	EAB	EAB TREATING	9	Ash	Cimmaron
NE	665	Persimmon Dr	Front	1	2	15	2012	EAB	EAB TREATING	11	Ash	Cimmaron
NE	665	Persimmon Dr	Front	2	2	15	2012	EAB	EAB TREATING	12	Ash	Cimmaron
NE	3301	Royal Fox Dr	Front	1	2	15	2012	EAB	EAB TREATING	9	Ash	Cimmaron
NE	3301	Royal Fox Dr	Front	2	2	15	2012	EAB	EAB TREATING	9	Ash	Cimmaron
NE	3301	Royal Fox Dr	Front	3	2	15	2012	EAB	EAB TREATING	9	Ash	Cimmaron
NE	3014	Royal Queens Ct	Front	1	2	15	2012	EAB	EAB TREATING	12	Ash	Autumn Purple
NE	902	Secretariat Ct	Side	2	2	15	2012	EAB NE	EAB TREATING	7	Ash	Cimmaron
NE	901	Tall Grass Ct	Front	1	2	15	2012	EAB NE	EAB TREATING	8	Ash	Cimmaron
NE	901	Tall Grass Ct	Front	2	2	15	2012	EAB NE	EAB TREATING	8	Ash	Cimmaron
NE	901	Tall Grass Ct	Front	3	2	15	2012	EAB NE	EAB TREATING	7	Ash	Cimmaron
NE	901	Tall Grass Ct	Side	1	2	15	2012	EAB NE	EAB TREATING	6	Ash	Cimmaron
NE	901	Tall Grass Ct	Side	2	2	15	2012	EAB NE	EAB TREATING	6	Ash	Cimmaron
NE	901	Tall Grass Ct	Side	3	2	15	2012	EAB NE	EAB TREATING	6	Ash	Cimmaron
NE	901	Tall Grass Ct	Side	4	2	15	2012	EAB NE	EAB TREATING	7	Ash	Cimmaron
NE	1117	Thoroughbred Cir	Front	2	2	15	2012	EAB NE	EAB TREATING	12	Ash	Cimmaron
NE	3100	Turnberry Rd	Side	1	2	15	2012	EAB	EAB TREATING	11	Ash	Autumn Purple
NE	3100	Turnberry Rd	Side	3	2	15	2012	EAB	EAB TREATING	12	Ash	Autumn Purple
NE	1230	Wing Ave	Front	1	2	15	2012	EAB	EAB TREATING	5	Ash	Cimmaron
NE	1305	Winners Cup Cir	Front	1	2	15	2012	EAB NE	EAB TREATING	16	Ash	Cimmaron
NE	1305	Winners Cup Cir	Front	2	2	15	2012	EAB NE	EAB TREATING	12	Ash	Cimmaron
NE	1409	Winners Cup Cir	Front	1	2	15	2012	EAB NE	EAB TREATING	14	Ash	Cimmaron
NE	1409	Winners Cup Cir	Front	2	2	15	2012	EAB NE	EAB TREATING	11	Ash	Cimmaron



Summary Report

EAB Confirmed, February through April, 2012

Quadrant	Address	Street	Side	Site	Confirmed Date			Condition	Maintenance	DBH	Species	
					MM	DD	YY					
NE	1413	Winners Cup Cir	Front	1	2	15	2012	EAB NE	EAB TREATING	9	Ash	Cimmaron
NE	1413	Winners Cup Cir	Front	2	2	15	2012	EAB NE	EAB TREATING	10	Ash	Cimmaron
SE	908	10th Ave /S	Front	1	2	15	2012	EAB SE	EAB TREATING	12	Ash	Cimmaron
SE	1560	Ronzheimer Ave	Front	1	2	15	2012	EAB SE	EAB TREATING	9	Ash	Cimmaron
SE	1560	Ronzheimer Ave	Front	2	2	15	2012	EAB SE	EAB TREATING	13	Ash	Cimmaron
NE	718	Arrowhead Ln	Front	1	2	15	2012	EAB	Monitor	11	Ash	Rosehill White
NE	3122	Blackhawk Tr	Front	2	2	15	2012	EAB	Monitor	9	Ash	Cimmaron
NE	3210	Blackhawk Tr	Front	1	2	15	2012	EAB	Monitor	10	Ash	Rosehill White
NE	2716	Royal Kings Ct	Front	1	2	15	2012	EAB	Monitor	9	Ash	Cimmaron
NE	4113	Royal Troon Ct	Front	3	2	15	2012	EAB	Monitor	8	Ash	Cimmaron
NE	701	Indian Way	Side	2	2	15	2012	EAB	Prune - Train	7	Ash	Cimmaron
NE	287	Shires Ln	Front	1	2	15	2012	EAB	Prune - Train	0	Ash	Autumn Purple
NE	6	Aintree Rd	Front	1	2	15	2012	EAB NE	Prune - Routine	12	Ash	Cimmaron
NE	6	Aintree Rd	Front	2	2	15	2012	EAB NE	Prune - Routine	12	Ash	Cimmaron
NE	6	Aintree Rd	Front	3	2	15	2012	EAB NE	Prune - Routine	12	Ash	Cimmaron
NE	14	Aintree Rd	Front	1	2	15	2012	EAB NE	Prune - Routine	12	Ash	Cimmaron
NE	14	Aintree Rd	Front	2	2	15	2012	EAB NE	Prune - Routine	12	Ash	Cimmaron
NE	801	Arrowhead Ln	Front	2	2	15	2012	EAB NE	Prune - Routine	10	Ash	Cimmaron
NE	806	Arrowhead Ln	Front	1	2	15	2012	EAB NE	Prune - Routine	10	Ash	Cimmaron
NE	810	Arrowhead Ln	Front	1	2	15	2012	EAB NE	Prune - Routine	11	Ash	Cimmaron
NE	3101	Blackhawk Tr	Front	2	2	15	2012	EAB NE	Prune - Routine	11	Ash	Cimmaron
NE	3118	Blackhawk Tr	Front	1	2	15	2012	EAB NE	Prune - Routine	10	Ash	Cimmaron
NE	3305	Blackhawk Tr	Front	1	2	15	2012	EAB NE	Prune - Routine	8	Ash	Cimmaron
NE	3418	Blackhawk Tr	Front	1	2	15	2012	EAB NE	Prune - Routine	9	Ash	Rosehill White
NE	1908	Bluegrass Ct	Front	2	2	15	2012	EAB NE	Prune - Routine	16	Ash	Cimmaron
NE	3002	Charlemagne Ln	Side	1	2	15	2012	EAB NE	Prune - Routine	8	Ash	Rosehill White
NE	3114	Charlemagne Ln	Front	1	2	15	2012	EAB NE	Prune - Routine	8	Ash	Cimmaron
NE	3118	Charlemagne Ln	Front	1	2	15	2012	EAB NE	Prune - Routine	5	Ash	Cimmaron
NE	3118	Charlemagne Ln	Front	3	2	15	2012	EAB NE	Prune - Routine	7	Ash	Cimmaron
NE	3122	Charlemagne Ln	Front	1	2	15	2012	EAB NE	Prune - Routine	7	Ash	Cimmaron
NE	3122	Charlemagne Ln	Front	2	2	15	2012	EAB NE	Prune - Routine	8	Ash	Cimmaron
NE	3205	Charlemagne Ln	Front	1	2	15	2012	EAB NE	Prune - Routine	10	Ash	Cimmaron

Summary Report

EAB Confirmed, February through April, 2012

Quadrant	Address	Street	Side	Site	Confirmed Date		Condition	Maintenance	DBH	Species	
					MM	DD YY					
NE	3206	Charlemagne Ln	Front	1	2	15 2012	EAB NE	Prune - Routine	10	Ash	Cimmaron
NE	3208	Charlemagne Ln	Median	1	2	15 2012	EAB NE	Prune - Routine	11	Ash	Cimmaron
NE	3218	Charlemagne Ln	Front	4	2	15 2012	EAB NE	Prune - Routine	10	Ash	Cimmaron
NE	3218	Charlemagne Ln	Front	5	2	15 2012	EAB NE	Prune - Routine	10	Ash	Cimmaron
NE	3300	Charlemagne Ln	Median	1	2	15 2012	EAB NE	Prune - Routine	9	Ash	Cimmaron
NE	3300	Charlemagne Ln	Median	2	2	15 2012	EAB NE	Prune - Routine	8	Ash	Cimmaron
NE	3300	Charlemagne Ln	Median	3	2	15 2012	EAB NE	Prune - Routine	8	Ash	Cimmaron
NE	3301	Charlemagne Ln	Front	1	2	15 2012	EAB NE	Prune - Routine	7	Ash	Cimmaron
NE	3301	Charlemagne Ln	Front	2	2	15 2012	EAB NE	Prune - Routine	8	Ash	Cimmaron
NE	3301	Charlemagne Ln	Front	3	2	15 2012	EAB NE	Prune - Routine	8	Ash	Cimmaron
NE	3306	Charlemagne Ln	Front	1	2	15 2012	EAB NE	Prune - Routine	8	Ash	Cimmaron
NE	3310	Charlemagne Ln	Front	1	2	15 2012	EAB NE	Prune - Routine	9	Ash	Cimmaron
NE	3405	Charlemagne Ln	Front	2	2	15 2012	EAB NE	Prune - Routine	8	Ash	Cimmaron
NE	3410	Charlemagne Ln	Front	1	2	15 2012	EAB NE	Prune - Routine	8	Ash	Cimmaron
NE	3410	Charlemagne Ln	Front	2	2	15 2012	EAB NE	Prune - Routine	10	Ash	Cimmaron
NE	3418	Charlemagne Ln	Front	1	2	15 2012	EAB NE	Prune - Routine	9	Ash	Cimmaron
NE	3501	Charlemagne Ln	Front	1	2	15 2012	EAB NE	Prune - Routine	9	Ash	Cimmaron
NE	3502	Charlemagne Ln	Front	1	2	15 2012	EAB NE	Prune - Routine	7	Ash	Cimmaron
NE	3610	Charlemagne Ln	Front	3	2	15 2012	EAB NE	Prune - Routine	9	Ash	Cimmaron
NE	1704	Essex Ct	Side	1	2	15 2012	EAB NE	Prune - Routine	11	Ash	Cimmaron
NE	1615	Forest Ridge Rd	Front	1	2	15 2012	EAB NE	Prune - Routine	10	Ash	Cimmaron
NE	1700	Forest Ridge Rd	Front	1	2	15 2012	EAB NE	Prune - Routine	10	Ash	Cimmaron
NE	1855	Forest Ridge Rd	Side	2	2	15 2012	EAB NE	Prune - Routine	9	Ash	Cimmaron
NE	1925	Forest Ridge Rd	Front	2	2	15 2012	EAB NE	Prune - Routine	11	Ash	Cimmaron
NE	1925	Forest Ridge Rd	Front	1	2	15 2012	EAB NE	Prune - Routine	9	Ash	Cimmaron
NE	1930	Forest Ridge Rd	Front	1	2	15 2012	EAB NE	Prune - Routine	11	Ash	Cimmaron
NE	2005	Forest Ridge Rd	Front	1	2	15 2012	EAB NE	Prune - Routine	12	Ash	Rosehill White
NE	903	Fox Chase Ct	Front	2	2	15 2012	EAB NE	Prune - Routine	10	Ash	Cimmaron
NE	3002	Fox Chase Dr	Side	2	2	15 2012	EAB NE	Prune - Routine	8	Ash	Cimmaron
NE	3106	Fox Chase Dr	Side	1	2	15 2012	EAB NE	Prune - Routine	11	Ash	Cimmaron
NE	3206	Fox Hunt Ln	Front	3	2	15 2012	EAB NE	Prune - Routine	9	Ash	Cimmaron

Summary Report  
EAB Confirmed, February through April, 2012

Quadrant	Address	Street	Side	Site	Confirmed Date		Condition	Maintenance	DBH	Species	
					MM	DD YY					
NE	3225	Fox Hunt Ln	Front	2	2	15 2012	EAB NE	Prune - Routine	9	Ash	Cimmaron
NE	3300	Fox Hunt Ln	Median	1	2	15 2012	EAB NE	Prune - Routine	10	Ash	Cimmaron
NE	3300	Fox Hunt Ln	Median	2	2	15 2012	EAB NE	Prune - Routine	9	Ash	Cimmaron
NE	3300	Fox Hunt Ln	Median	3	2	15 2012	EAB NE	Prune - Routine	9	Ash	Cimmaron
NE	701	Foxfield Ct	Front	2	2	15 2012	EAB NE	Prune - Routine	6	Ash	Cimmaron
NE	702	Foxfield Ct	Front	1	2	15 2012	EAB NE	Prune - Routine	7	Ash	Cimmaron
NE	1640	Huntington Rd	Front	2	2	15 2012	EAB NE	Prune - Routine	10	Ash	Cimmaron
NE	709	Indian Way	Front	1	2	15 2012	EAB NE	Prune - Routine	9	Ash	Cimmaron
NE	710	Indian Way	Front	1	2	15 2012	EAB NE	Prune - Routine	9	Ash	Cimmaron
NE	710	Indian Way	Front	2	2	15 2012	EAB NE	Prune - Routine	10	Ash	Cimmaron
NE	1501	Keim Ct	Side	1	2	15 2012	EAB NE	Prune - Routine	8	Ash	Cimmaron
NE	1501	Keim Ct	Side	2	2	15 2012	EAB NE	Prune - Routine	8	Ash	Cimmaron
NE	1501	Keim Ct	Side	4	2	15 2012	EAB NE	Prune - Routine	8	Ash	Cimmaron
NE	1010	Keim Tr	Front	2	2	15 2012	EAB NE	Prune - Routine	8	Ash	Cimmaron
NE	1018	Keim Tr	Front	3	2	15 2012	EAB NE	Prune - Routine	9	Ash	Cimmaron
NE	1105	Keim Tr	Front	1	2	15 2012	EAB NE	Prune - Routine	8	Ash	Cimmaron
NE	1105	Keim Tr	Front	2	2	15 2012	EAB NE	Prune - Routine	8	Ash	Cimmaron
NE	1105	Keim Tr	Front	3	2	15 2012	EAB NE	Prune - Routine	8	Ash	Cimmaron
NE	1130	Keim Tr	Front	1	2	15 2012	EAB NE	Prune - Routine	10	Ash	Cimmaron
NE	1130	Keim Tr	Front	2	2	15 2012	EAB NE	Prune - Routine	9	Ash	Cimmaron
NE	1130	Keim Tr	Front	3	2	15 2012	EAB NE	Prune - Routine	9	Ash	Cimmaron
NE	1130	Keim Tr	Front	4	2	15 2012	EAB NE	Prune - Routine	9	Ash	Cimmaron
NE	1199	Keim Tr	Front	1	2	15 2012	EAB NE	Prune - Routine	8	Ash	Cimmaron
NE	1199	Keim Tr	Front	2	2	15 2012	EAB NE	Prune - Routine	7	Ash	Cimmaron
NE	1199	Keim Tr	Front	3	2	15 2012	EAB NE	Prune - Routine	10	Ash	Cimmaron
NE	1199	Keim Tr	Front	4	2	15 2012	EAB NE	Prune - Routine	9	Ash	Cimmaron
NE	1205	Keim Tr	Front	1	2	15 2012	EAB NE	Prune - Routine	9	Ash	Cimmaron
NE	1205	Keim Tr	Front	2	2	15 2012	EAB NE	Prune - Routine	7	Ash	Cimmaron
NE	1205	Keim Tr	Front	3	2	15 2012	EAB NE	Prune - Routine	8	Ash	Cimmaron
NE	1302	Keim Tr	Front	2	2	15 2012	EAB NE	Prune - Routine	8	Ash	Cimmaron
NE	1315	Keim Tr	Front	1	2	15 2012	EAB NE	Prune - Routine	10	Ash	Cimmaron
NE	1402	Keim Tr	Front	3	2	15 2012	EAB NE	Prune - Routine	9	Ash	Cimmaron

Summary Report  
EAB Confirmed, February through April, 2012

Quadrant	Address	Street	Side	Site	Confirmed Date	Condition	Maintenance	DBH	Species			
NE	1499	Keim Tr	Front	1	2	15	2012	EAB NE	Prune - Routine	9	Ash	Cimmaron
NE	1499	Keim Tr	Front	2	2	15	2012	EAB NE	Prune - Routine	9	Ash	Cimmaron
NE	1499	Keim Tr	Front	3	2	15	2012	EAB NE	Prune - Routine	10	Ash	Cimmaron
NE	1499	Keim Tr	Front	4	2	15	2012	EAB NE	Prune - Routine	10	Ash	Cimmaron
NE	1501	Keim Tr	Front	3	2	15	2012	EAB NE	Prune - Routine	10	Ash	Cimmaron
NE	1506	Keim Tr	Front	1	2	15	2012	EAB NE	Prune - Routine	9	Ash	Cimmaron
NE	1506	Keim Tr	Front	2	2	15	2012	EAB NE	Prune - Routine	9	Ash	Cimmaron
NE	1506	Keim Tr	Front	3	2	15	2012	EAB NE	Prune - Routine	10	Ash	Cimmaron
NE	1510	Keim Tr	Front	1	2	15	2012	EAB NE	Prune - Routine	9	Ash	Cimmaron
NE	1510	Keim Tr	Front	2	2	15	2012	EAB NE	Prune - Routine	11	Ash	Cimmaron
NE	1510	Keim Tr	Front	3	2	15	2012	EAB NE	Prune - Routine	11	Ash	Cimmaron
NE	1514	Keim Tr	Front	1	2	15	2012	EAB NE	Prune - Routine	10	Ash	Cimmaron
NE	1514	Keim Tr	Front	2	2	15	2012	EAB NE	Prune - Routine	11	Ash	Cimmaron
NE	1514	Keim Tr	Front	3	2	15	2012	EAB NE	Prune - Routine	9	Ash	Cimmaron
NE	2501	Muirfield Ct	Front	1	2	15	2012	EAB NE	Prune - Routine	12	Ash	Rosehill White
NE	2502	Muirfield Ct	Side	1	2	15	2012	EAB NE	Prune - Routine	5	Ash	Cimmaron
NE	2502	Muirfield Ct	Side	3	2	15	2012	EAB NE	Prune - Routine	5	Ash	Cimmaron
NE	2502	Muirfield Ct	Side	4	2	15	2012	EAB NE	Prune - Routine	6	Ash	Cimmaron
NE	2502	Muirfield Ct	Side	5	2	15	2012	EAB NE	Prune - Routine	5	Ash	Cimmaron
NE	3406	Oxbow Ln	Front	2	2	15	2012	EAB NE	Prune - Routine	9	Ash	Cimmaron
NE	3407	Oxbow Ln	Front	11	2	15	2012	EAB NE	Prune - Routine	6	Ash	Cimmaron
NE	215	Persimmon Dr	Front	1	2	15	2012	EAB NE	Prune - Routine	9	Ash	Cimmaron
NE	215	Persimmon Dr	Front	3	2	15	2012	EAB NE	Prune - Routine	6	Ash	Cimmaron
NE	215	Persimmon Dr	Front	6	2	15	2012	EAB NE	Prune - Routine	4	Ash	Cimmaron
NE	325	Persimmon Dr	Front	2	2	15	2012	EAB NE	Prune - Routine	8	Ash	Cimmaron
NE	375	Persimmon Dr	Front	2	2	15	2012	EAB NE	Prune - Routine	9	Ash	Cimmaron
NE	375	Persimmon Dr	Front	3	2	15	2012	EAB NE	Prune - Routine	10	Ash	Cimmaron
NE	395	Persimmon Dr	Front	1	2	15	2012	EAB NE	Prune - Routine	11	Ash	Cimmaron
NE	2900	Royal Fox Dr	Median	3	2	15	2012	EAB NE	Prune - Routine	12	Ash	Cimmaron
NE	2900	Royal Fox Dr	Median	6	2	15	2012	EAB NE	Prune - Routine	10	Ash	Cimmaron
NE	3203	Royal Fox Dr	Front	1	2	15	2012	EAB NE	Prune - Routine	8	Ash	Cimmaron
NE	3204	Royal Fox Dr	Front	2	2	15	2012	EAB NE	Prune - Routine	6	Ash	Cimmaron



Summary Report

EAB Confirmed, February through April, 2012

Quadrant	Address	Street	Side	Site	Confirmed Date			Condition	Maintenance	DBH	Species	
					MM	DD	YY					
NE	3205	Royal Fox Dr	Front	3	2	15	2012	EAB NE	Prune - Routine	7	Ash	Cimmaron
NE	3205	Royal Fox Dr	Front	2	2	15	2012	EAB NE	Prune - Routine	8	Ash	Cimmaron
NE	3303	Royal Fox Dr	Front	1	2	15	2012	EAB NE	Prune - Routine	9	Ash	Cimmaron
NE	3303	Royal Fox Dr	Front	2	2	15	2012	EAB NE	Prune - Routine	7	Ash	Cimmaron
NE	3305	Royal Fox Dr	Front	1	2	15	2012	EAB NE	Prune - Routine	6	Ash	Cimmaron
NE	3305	Royal Fox Dr	Front	2	2	15	2012	EAB NE	Prune - Routine	8	Ash	Cimmaron
NE	3305	Royal Fox Dr	Front	3	2	15	2012	EAB NE	Prune - Routine	6	Ash	Cimmaron
NE	3401	Royal Fox Dr	Front	1	2	15	2012	EAB NE	Prune - Routine	6	Ash	Cimmaron
NE	3401	Royal Fox Dr	Front	3	2	15	2012	EAB NE	Prune - Routine	6	Ash	Cimmaron
NE	3403	Royal Fox Dr	Front	3	2	15	2012	EAB NE	Prune - Routine	6	Ash	Cimmaron
NE	3503	Royal Fox Dr	Front	5	2	15	2012	EAB NE	Prune - Routine	7	Ash	Cimmaron
NE	3503	Royal Fox Dr	Front	1	2	15	2012	EAB NE	Prune - Routine	10	Ash	Cimmaron
NE	3601	Royal Fox Dr	Front	1	2	15	2012	EAB NE	Prune - Routine	7	Ash	Cimmaron
NE	3601	Royal Fox Dr	Front	3	2	15	2012	EAB NE	Prune - Routine	7	Ash	Cimmaron
NE	3605	Royal Fox Dr	Front	1	2	15	2012	EAB NE	Prune - Routine	7	Ash	Cimmaron
NE	3605	Royal Fox Dr	Front	4	2	15	2012	EAB NE	Prune - Routine	7	Ash	Cimmaron
NE	3605	Royal Fox Dr	Front	5	2	15	2012	EAB NE	Prune - Routine	7	Ash	Cimmaron
NE	3701	Royal Fox Dr	Front	1	2	15	2012	EAB NE	Prune - Routine	8	Ash	Cimmaron
NE	3701	Royal Fox Dr	Front	4	2	15	2012	EAB NE	Prune - Routine	7	Ash	Cimmaron
NE	3705	Royal Fox Dr	Front	1	2	15	2012	EAB NE	Prune - Routine	7	Ash	Cimmaron
NE	3705	Royal Fox Dr	Front	2	2	15	2012	EAB NE	Prune - Routine	7	Ash	Cimmaron
NE	3705	Royal Fox Dr	Front	3	2	15	2012	EAB NE	Prune - Routine	7	Ash	Cimmaron
NE	3705	Royal Fox Dr	Front	4	2	15	2012	EAB NE	Prune - Routine	7	Ash	Cimmaron
NE	3705	Royal Fox Dr	Front	5	2	15	2012	EAB NE	Prune - Routine	7	Ash	Cimmaron
NE	3805	Royal Fox Dr	Front	1	2	15	2012	EAB NE	Prune - Routine	7	Ash	Cimmaron
NE	3805	Royal Fox Dr	Front	2	2	15	2012	EAB NE	Prune - Routine	7	Ash	Cimmaron
NE	3805	Royal Fox Dr	Front	3	2	15	2012	EAB NE	Prune - Routine	7	Ash	Cimmaron
NE	4105	Royal Fox Dr	Side	1	2	15	2012	EAB NE	Prune - Routine	7	Ash	Cimmaron
NE	4105	Royal Fox Dr	Side	2	2	15	2012	EAB NE	Prune - Routine	7	Ash	Cimmaron
NE	4105	Royal Fox Dr	Side	3	2	15	2012	EAB NE	Prune - Routine	7	Ash	Cimmaron
NE	3004	Royal Queens Ct	Front	1	2	15	2012	EAB NE	Prune - Routine	16	Ash	Cimmaron
NE	2606	Royal St Georges Ct	Front	1	2	15	2012	EAB NE	Prune - Routine	18	Ash	Cimmaron

Summary Report  
EAB Confirmed, February through April, 2012

Quadrant	Address	Street	Side	Site	Confirmed Date			Condition	Maintenance	DBH	Species	
					MM	DD	YY					
NE	4109	Royal Troon Ct	Front	3	2	15	2012	EAB NE	Prune - Routine	8	Ash	Cimmaron
NE	4113	Royal Troon Ct	Front	2	2	15	2012	EAB NE	Prune - Routine	8	Ash	Cimmaron
NE	4113	Royal Troon Ct	Front	4	2	15	2012	EAB NE	Prune - Routine	8	Ash	Cimmaron
NE	4123	Royal Troon Ct	Front	1	2	15	2012	EAB NE	Prune - Routine	7	Ash	Cimmaron
NE	4125	Royal Troon Ct	Front	5	2	15	2012	EAB NE	Prune - Routine	7	Ash	Cimmaron
NE	4127	Royal Troon Ct	Front	1	2	15	2012	EAB NE	Prune - Routine	7	Ash	Cimmaron
NE	4127	Royal Troon Ct	Front	2	2	15	2012	EAB NE	Prune - Routine	7	Ash	Cimmaron
NE	4127	Royal Troon Ct	Front	3	2	15	2012	EAB NE	Prune - Routine	7	Ash	Cimmaron
NE	4127	Royal Troon Ct	Front	4	2	15	2012	EAB NE	Prune - Routine	7	Ash	Cimmaron
NE	275	Shires Ln	Front	1	2	15	2012	EAB NE	Prune - Routine	15	Ash	Cimmaron
NE	275	Shires Ln	Front	2	2	15	2012	EAB NE	Prune - Routine	15	Ash	Cimmaron
NE	285	Shires Ln	Front	1	2	15	2012	EAB NE	Prune - Routine	8	Ash	Cimmaron
NE	812	Steeplechase Ct	Front	1	2	15	2012	EAB NE	Prune - Routine	8	Ash	Cimmaron
NE	812	Steeplechase Ct	Front	2	2	15	2012	EAB NE	Prune - Routine	7	Ash	Cimmaron
NE	812	Steeplechase Ct	Front	3	2	15	2012	EAB NE	Prune - Routine	8	Ash	Cimmaron
NE	812	Steeplechase Ct	Front	4	2	15	2012	EAB NE	Prune - Routine	8	Ash	Cimmaron
NE	814	Steeplechase Ct	Front	1	2	15	2012	EAB NE	Prune - Routine	9	Ash	Cimmaron
NE	814	Steeplechase Ct	Front	2	2	15	2012	EAB NE	Prune - Routine	9	Ash	Rosehill White
NE	816	Steeplechase Ct	Front	1	2	15	2012	EAB NE	Prune - Routine	5	Ash	Cimmaron
NE	513	Steeplechase Rd	Front	1	2	15	2012	EAB NE	Prune - Routine	6	Ash	Cimmaron
NE	601	Steeplechase Rd	Front	1	2	15	2012	EAB NE	Prune - Routine	8	Ash	Cimmaron
NE	602	Steeplechase Rd	Front	3	2	15	2012	EAB NE	Prune - Routine	8	Ash	Cimmaron
NE	602	Steeplechase Rd	Front	4	2	15	2012	EAB NE	Prune - Routine	8	Ash	Cimmaron
NE	605	Steeplechase Rd	Front	1	2	15	2012	EAB NE	Prune - Routine	6	Ash	Cimmaron
NE	606	Steeplechase Rd	Front	2	2	15	2012	EAB NE	Prune - Routine	9	Ash	Cimmaron
NE	606	Steeplechase Rd	Front	4	2	15	2012	EAB NE	Prune - Routine	8	Ash	Cimmaron
NE	609	Steeplechase Rd	Front	1	2	15	2012	EAB NE	Prune - Routine	8	Ash	Cimmaron
NE	609	Steeplechase Rd	Front	2	2	15	2012	EAB NE	Prune - Routine	8	Ash	Cimmaron
NE	609	Steeplechase Rd	Front	3	2	15	2012	EAB NE	Prune - Routine	5	Ash	Cimmaron
NE	614	Steeplechase Rd	Front	1	2	15	2012	EAB NE	Prune - Routine	9	Ash	Cimmaron
NE	614	Steeplechase Rd	Front	3	2	15	2012	EAB NE	Prune - Routine	10	Ash	Cimmaron
NE	614	Steeplechase Rd	Front	4	2	15	2012	EAB NE	Prune - Routine	12	Ash	Cimmaron

Summary Report  
EAB Confirmed, February through April, 2012

Quadrant	Address	Street	Side	Site	Confirmed Date	Condition	Maintenance	DBH	Species		
				MM	DD	YY					
NE	621	Steeplechase Rd	Front	2	2	15 2012	EAB NE	Prune - Routine	7	Ash	Cimmaron
NE	718	Steeplechase Rd	Front	2	2	15 2012	EAB NE	Prune - Routine	11	Ash	Cimmaron
NE	718	Steeplechase Rd	Front	3	2	15 2012	EAB NE	Prune - Routine	6	Ash	Cimmaron
NE	799	Steeplechase Rd	Front	2	2	15 2012	EAB NE	Prune - Routine	5	Ash	Cimmaron
NE	799	Steeplechase Rd	Front	3	2	15 2012	EAB NE	Prune - Routine	5	Ash	Cimmaron
NE	799	Steeplechase Rd	Front	4	2	15 2012	EAB NE	Prune - Routine	6	Ash	Cimmaron
NE	799	Steeplechase Rd	Front	5	2	15 2012	EAB NE	Prune - Routine	5	Ash	Cimmaron
NE	799	Steeplechase Rd	Front	6	2	15 2012	EAB NE	Prune - Routine	6	Ash	Cimmaron
NE	802	Steeplechase Rd	Front	1	2	15 2012	EAB NE	Prune - Routine	10	Ash	Cimmaron
NE	802	Steeplechase Rd	Front	2	2	15 2012	EAB NE	Prune - Routine	12	Ash	Cimmaron
NE	802	Steeplechase Rd	Front	3	2	15 2012	EAB NE	Prune - Routine	12	Ash	Cimmaron
NE	805	Steeplechase Rd	Front	1	2	15 2012	EAB NE	Prune - Routine	8	Ash	Cimmaron
NE	806	Steeplechase Rd	Front	2	2	15 2012	EAB NE	Prune - Routine	11	Ash	Cimmaron
NE	806	Steeplechase Rd	Front	3	2	15 2012	EAB NE	Prune - Routine	7	Ash	Cimmaron
NE	806	Steeplechase Rd	Front	1	2	15 2012	EAB NE	Prune - Routine	10	Ash	Cimmaron
NE	901	Steeplechase Rd	Front	2	2	15 2012	EAB NE	Prune - Routine	9	Ash	Cimmaron
NE	905	Steeplechase Rd	Front	1	2	15 2012	EAB NE	Prune - Routine	9	Ash	Cimmaron
NE	905	Steeplechase Rd	Front	2	2	15 2012	EAB NE	Prune - Routine	9	Ash	Cimmaron
NE	909	Steeplechase Rd	Front	1	2	15 2012	EAB NE	Prune - Routine	7	Ash	Cimmaron
NE	909	Steeplechase Rd	Front	2	2	15 2012	EAB NE	Prune - Routine	8	Ash	Cimmaron
NE	1804	Sterling Ct	Front	1	2	15 2012	EAB NE	Prune - Routine	9	Ash	Cimmaron
NE	1804	Sterling Ct	Front	2	2	15 2012	EAB NE	Prune - Routine	11	Ash	Cimmaron
NE	1014	Sutton Pl	Front	1	2	15 2012	EAB NE	Prune - Routine	5	Ash	Cimmaron
NE	1014	Sutton Pl	Front	2	2	15 2012	EAB NE	Prune - Routine	5	Ash	Cimmaron
NE	1210	Thoroughbred Cir	Front	2	2	15 2012	EAB NE	Prune - Routine	11	Ash	Cimmaron
NE	1512	Triple Crown Ct	Front	1	2	15 2012	EAB NE	Prune - Routine	12	Ash	Cimmaron
NE	1518	Triple Crown Ct	Side	2	2	15 2012	EAB NE	Prune - Routine	10	Ash	Cimmaron
NE	1518	Triple Crown Ct	Side	3	2	15 2012	EAB NE	Prune - Routine	10	Ash	Cimmaron
NE	2602	Turnberry Rd	Front	1	2	15 2012	EAB NE	Prune - Routine	6	Ash	Rosehill White
NE	2702	Turnberry Rd	Front	2	2	15 2012	EAB NE	Prune - Routine	6	Ash	Cimmaron
NE	2702	Turnberry Rd	Front	1	2	15 2012	EAB NE	Prune - Routine	6	Ash	Cimmaron
NE	2703	Turnberry Rd	Front	2	2	15 2012	EAB NE	Prune - Routine	6	Ash	Rosehill White

Summary Report  
EAB Confirmed, February through April, 2012

Quadrant	Address	Street	Side	Site	Confirmed Date	Condition	Maintenance	DBH	Species			
NE	2804	Turnberry Rd	Front	2	2	15	2012	EAB NE	Prune - Routine	5	Ash	Cimmaron
NE	3106	Turnberry Rd	Front	1	2	15	2012	EAB NE	Prune - Routine	5	Ash	Rosehill White
NE	3106	Turnberry Rd	Front	2	2	15	2012	EAB NE	Prune - Routine	6	Ash	Rosehill White
NE	3112	Turnberry Rd	Front	4	2	15	2012	EAB NE	Prune - Routine	19	Ash	Rosehill White
NE	1502	Winners Cup Cir	Front	1	2	15	2012	EAB NE	Prune - Routine	10	Ash	Cimmaron
NE	1601	Winners Cup Cir	Front	2	2	15	2012	EAB NE	Prune - Routine	7	Ash	Cimmaron
NE	1602	Winners Cup Cir	Front	1	2	15	2012	EAB NE	Prune - Routine	9	Ash	Cimmaron
NE	1602	Winners Cup Cir	Front	2	2	15	2012	EAB NE	Prune - Routine	8	Ash	Cimmaron
NE	1606	Winners Cup Cir	Front	2	2	15	2012	EAB NE	Prune - Routine	8	Ash	Cimmaron
SE	909	10th Ave /S	Front	2	2	15	2012	EAB SE	Prune - Routine	11	Ash	Cimmaron
SE	803	11th Ave /S	Front	3	2	15	2012	EAB SE	Prune - Routine	10	Ash	Rosehill White
SE	932	12th Ave /S	Front	1	2	15	2012	EAB SE	Prune - Routine	12	Ash	Cimmaron
SE	1604	13th Ave /S	Front	2	2	15	2012	EAB SE	Prune - Routine	7	Ash	Cimmaron
SE	1609	7th Ave /S	Side	1	2	15	2012	EAB SE	Prune - Routine	18	Ash	Cimmaron
SE	1544	Concord Ct	Front	1	2	15	2012	EAB SE	Prune - Routine	10	Ash	Rosehill White
SE	1547	Concord Ct	Front	2	2	15	2012	EAB SE	Prune - Routine	18	Ash	Cimmaron
SE	1461	Cranbrook Ave	Front	1	2	15	2012	EAB SE	Prune - Routine	10	Ash	Cimmaron
SE	1013	Fern Ave	Front	1	2	15	2012	EAB SE	Prune - Routine	16	Ash	Cimmaron
SE	975	Independence Ave	Front	1	2	15	2012	EAB SE	Prune - Routine	16	Ash	Rosehill White
SE	1045	Independence Ave	Side	2	2	15	2012	EAB SE	Prune - Routine	12	Ash	Rosehill White
SE	1055	Independence Ave	Front	1	2	15	2012	EAB SE	Prune - Routine	24	Ash	Cimmaron
SE	1060	Independence Ave	Front	1	2	15	2012	EAB SE	Prune - Routine	18	Ash	Cimmaron
SE	1060	Independence Ave	Side	1	2	15	2012	EAB SE	Prune - Routine	14	Ash	Rosehill White
SE	1121	Independence Ave	Front	1	2	15	2012	EAB SE	Prune - Routine	11	Ash	Cimmaron
SE	1141	Independence Ave	Front	1	2	15	2012	EAB SE	Prune - Routine	21	Ash	Cimmaron
SE	1602	Jeanette Ave	Front	2	2	15	2012	EAB SE	Prune - Routine	19	Ash	Cimmaron
SE	1602	Jeanette Ave	Front	3	2	15	2012	EAB SE	Prune - Routine	12	Ash	Cimmaron
SE	1814	Lucylle Ct	Side	4	2	15	2012	EAB NE	Prune - Routine	4	Ash	Rosehill White
SE	1924	Moore Ave	Front	1	2	15	2012	EAB SE	Prune - Routine	14	Ash	Cimmaron
SE	1928	Moore Ave	Front	1	2	15	2012	EAB SE	Prune - Routine	15	Ash	Cimmaron
SE	1936	Moore Ave	Front	1	2	15	2012	EAB SE	Prune - Routine	12	Ash	Cimmaron
SE	1940	Moore Ave	Front	1	2	15	2012	EAB SE	Prune - Routine	12	Ash	Cimmaron



Summary Report  
EAB Confirmed, February through April, 2012

Quadrant	Address	Street	Side	Site	Confirmed Date		Condition	Maintenance	DBH	Species	
					MM	DD YY					
SE	1940	Moore Ave	Front	2	2	15 2012	EAB SE	Prune - Routine	13	Ash	Cimmaron
SE	1809	Moore Ct	Side	6	2	15 2012	EAB NE	Prune - Routine	6	Ash	Autumn Purple
SE	1748	Pleasant Ave	Side	2	2	15 2012	EAB SE	Prune - Routine	12	Ash	Cimmaron
SE	1957	Pleasant Ave	Side	1	2	15 2012	EAB SE	Prune - Routine	8	Ash	Cimmaron
SE	1502	Ronzheimer Ave	Front	2	2	15 2012	EAB SE	Prune - Routine	12	Ash	Cimmaron
SE	1508	Ronzheimer Ave	Front	1	2	15 2012	EAB SE	Prune - Routine	13	Ash	Cimmaron
SE	1508	Ronzheimer Ave	Front	2	2	15 2012	EAB SE	Prune - Routine	12	Ash	Cimmaron
SE	1517	Ronzheimer Ave	Front	1	2	15 2012	EAB SE	Prune - Routine	10	Ash	Cimmaron
SE	1521	Ronzheimer Ave	Front	1	2	15 2012	EAB SE	Prune - Routine	14	Ash	Cimmaron
SE	1521	Ronzheimer Ave	Front	2	2	15 2012	EAB SE	Prune - Routine	12	Ash	Cimmaron
SW	1438	10th St /S	Front	2	2	15 2012	EAB SW	Prune - Routine	15	Ash	Cimmaron
SW	1444	10th St /S	Front	2	2	15 2012	EAB SW	Prune - Routine	14	Ash	Cimmaron
SW	1020	4th St /S	Front	1	2	15 2012	EAB SW	Prune - Routine	3	Ash	Cimmaron
NE	701	Arrowhead Ln	Front	1	2	15 2012	EAB NE	Prune - Train	9	Ash	Cimmaron
NE	701	Arrowhead Ln	Front	2	2	15 2012	EAB NE	Prune - Train	8	Ash	Cimmaron
NE	701	Arrowhead Ln	Front	3	2	15 2012	EAB NE	Prune - Train	8	Ash	Cimmaron
NE	701	Arrowhead Ln	Side	4	2	15 2012	EAB NE	Prune - Train	7	Ash	Cimmaron
NE	701	Arrowhead Ln	Side	5	2	15 2012	EAB NE	Prune - Train	8	Ash	Cimmaron
NE	717	Arrowhead Ln	Front	1	2	15 2012	EAB NE	Prune - Train	9	Ash	Rosehill White
NE	802	Arrowhead Ln	Front	1	2	15 2012	EAB NE	Prune - Train	10	Ash	Cimmaron
NE	2922	Black Walnut Ln	Front	1	2	15 2012	EAB NE	Prune - Train	3	Ash	Summit Green
NE	2922	Black Walnut Ln	Front	2	2	15 2012	EAB NE	Prune - Train	3	Ash	Summit Green
NE	3101	Blackhawk Ct	Front	2	2	15 2012	EAB NE	Prune - Train	10	Ash	Rosehill White
NE	3118	Blackhawk Tr	Front	2	2	15 2012	EAB NE	Prune - Train	9	Ash	Cimmaron
NE	3122	Blackhawk Tr	Front	1	2	15 2012	EAB NE	Prune - Train	10	Ash	Rosehill White
NE	3201	Blackhawk Tr	Front	1	2	15 2012	EAB NE	Prune - Train	9	Ash	Cimmaron
NE	3201	Blackhawk Tr	Front	2	2	15 2012	EAB NE	Prune - Train	9	Ash	Rosehill White
NE	3201	Blackhawk Tr	Front	3	2	15 2012	EAB NE	Prune - Train	8	Ash	Rosehill White
NE	3202	Blackhawk Tr	Front	2	2	15 2012	EAB NE	Prune - Train	9	Ash	Cimmaron
NE	3205	Blackhawk Tr	Front	2	2	15 2012	EAB NE	Prune - Train	8	Ash	Rosehill White
NE	3213	Blackhawk Tr	Front	1	2	15 2012	EAB NE	Prune - Train	8	Ash	Cimmaron
NE	3213	Blackhawk Tr	Front	2	2	15 2012	EAB NE	Prune - Train	9	Ash	Cimmaron

Summary Report  
EAB Confirmed, February through April, 2012

Quadrant	Address	Street	Side	Site	Confirmed Date		Condition	Maintenance	DBH	Species		
					MM	DD YY						
NE	3214	Blackhawk Tr	Front	1	2	15	2012	EAB NE	Prune - Train	8	Ash	Rosehill White
NE	3305	Blackhawk Tr	Front	2	2	15	2012	EAB NE	Prune - Train	6	Ash	Cimmaron
NE	3306	Blackhawk Tr	Front	1	2	15	2012	EAB NE	Prune - Train	8	Ash	Cimmaron
NE	3309	Blackhawk Tr	Front	1	2	15	2012	EAB NE	Prune - Train	9	Ash	Cimmaron
NE	3310	Blackhawk Tr	Front	1	2	15	2012	EAB NE	Prune - Train	9	Ash	Cimmaron
NE	3314	Blackhawk Tr	Front	1	2	15	2012	EAB NE	Prune - Train	10	Ash	Rosehill White
NE	3314	Blackhawk Tr	Front	2	2	15	2012	EAB NE	Prune - Train	9	Ash	Rosehill White
NE	3401	Blackhawk Tr	Front	1	2	15	2012	EAB NE	Prune - Train	8	Ash	Cimmaron
NE	3401	Blackhawk Tr	Front	2	2	15	2012	EAB NE	Prune - Train	9	Ash	Cimmaron
NE	3405	Blackhawk Tr	Front	1	2	15	2012	EAB NE	Prune - Train	9	Ash	Cimmaron
NE	3409	Blackhawk Tr	Front	1	2	15	2012	EAB NE	Prune - Train	8	Ash	Cimmaron
NE	3410	Blackhawk Tr	Front	1	2	15	2012	EAB NE	Prune - Train	11	Ash	Cimmaron
NE	3414	Blackhawk Tr	Front	1	2	15	2012	EAB NE	Prune - Train	8	Ash	Cimmaron
NE	3417	Blackhawk Tr	Front	1	2	15	2012	EAB NE	Prune - Train	10	Ash	Cimmaron
NE	3417	Blackhawk Tr	Front	2	2	15	2012	EAB NE	Prune - Train	9	Ash	Cimmaron
NE	3418	Blackhawk Tr	Front	2	2	15	2012	EAB NE	Prune - Train	8	Ash	Rosehill White
NE	3418	Blackhawk Tr	Front	3	2	15	2012	EAB NE	Prune - Train	8	Ash	Rosehill White
NE	1908	Bluegrass Ct	Front	1	2	15	2012	EAB NE	Prune - Train	9	Ash	Cimmaron
NE	1908	Bluegrass Ct	Front	3	2	15	2012	EAB NE	Prune - Train	10	Ash	Cimmaron
NE	1908	Bluegrass Ct	Front	3	2	15	2012	EAB NE	Prune - Train	10	Ash	Cimmaron
NE	1908	Bluegrass Ct	Side	3	2	15	2012	EAB NE	Prune - Train	11	Ash	Cimmaron
NE	3101	Charlemagne Ln	Front	1	2	15	2012	EAB NE	Prune - Train	8	Ash	Cimmaron
NE	3101	Charlemagne Ln	Front	2	2	15	2012	EAB NE	Prune - Train	11	Ash	Cimmaron
NE	3101	Charlemagne Ln	Front	3	2	15	2012	EAB NE	Prune - Train	7	Ash	Cimmaron
NE	3101	Charlemagne Ln	Side	3	2	15	2012	EAB NE	Prune - Train	6	Ash	Cimmaron
NE	3125	Charlemagne Ln	Side	2	2	15	2012	EAB NE	Prune - Train	9	Ash	Rosehill White
NE	217	Chasse Cir	Front	1	2	15	2012	EAB NE	Prune - Train	3	Ash	Marshall Seedless Gre
NE	3120	E. Francis Cir	Front	1	2	15	2012	EAB NE	Prune - Train	3	Ash	Summit Green
NE	3136	E. Francis Cir	Front	1	2	15	2012	EAB NE	Prune - Train	3	Ash	Rosehill White
NE	3147	E. Francis Cir	Side	1	2	15	2012	EAB NE	Prune - Train	2	Ash	Marshall Seedless Gre
NE	3147	E. Francis Cir	Side	2	2	15	2012	EAB NE	Prune - Train	2	Ash	Marshall Seedless Gre
NE	3147	E. Francis Cir	Side	3	2	15	2012	EAB NE	Prune - Train	2	Ash	Marshall Seedless Gre
NE	1014	Fire Fox Ct	Front	1	2	15	2012	EAB NE	Prune - Train	3	Ash	Autumn Purple

Summary Report  
EAB Confirmed, February through April, 2012

Quadrant	Address	Street	Side	Site	Confirmed Date			Condition	Maintenance	DBH	Species	
					MM	DD	YY					
NE	1022	Fire Fox Ct	Side	1	2	15	2012	EAB NE	Prune - Train	3	Ash	Autumn Purple
NE	1022	Fire Fox Ct	Side	2	2	15	2012	EAB NE	Prune - Train	3	Ash	Autumn Purple
NE	1500	Forest Ridge Rd	Front	2	2	15	2012	EAB NE	Prune - Train	11	Ash	Cimmaron
NE	1500	Forest Ridge Rd	Side	1	2	15	2012	EAB NE	Prune - Train	9	Ash	Cimmaron
NE	1500	Forest Ridge Rd	Side	2	2	15	2012	EAB NE	Prune - Train	12	Ash	Cimmaron
NE	1305	Fox Chase Blvd	Front	1	2	15	2012	EAB NE	Prune - Train	5	Ash	Cimmaron
NE	1309	Fox Chase Blvd	Front	3	2	15	2012	EAB NE	Prune - Train	4	Ash	Cimmaron
NE	1517	Fox Chase Blvd	Front	1	2	15	2012	EAB NE	Prune - Train	5	Ash	Cimmaron
NE	3106	Fox Chase Dr	Front	2	2	15	2012	EAB NE	Prune - Train	8	Ash	Cimmaron
NE	3306	Fox Chase Dr	Side	1	2	15	2012	EAB NE	Prune - Train	11	Ash	Cimmaron
NE	3306	Fox Chase Dr	Side	3	2	15	2012	EAB NE	Prune - Train	12	Ash	Cimmaron
NE	3209	Fox Hunt Ln	Front	1	2	15	2012	EAB NE	Prune - Train	6	Ash	Cimmaron
NE	3214	Fox Hunt Ln	Front	1	2	15	2012	EAB NE	Prune - Train	10	Ash	Cimmaron
NE	3218	Fox Hunt Ln	Front	1	2	15	2012	EAB NE	Prune - Train	6	Ash	Cimmaron
NE	3305	Fox Hunt Ln	Front	1	2	15	2012	EAB NE	Prune - Train	9	Ash	Cimmaron
NE	3305	Fox Hunt Ln	Front	2	2	15	2012	EAB NE	Prune - Train	9	Ash	Cimmaron
NE	3309	Fox Hunt Ln	Front	1	2	15	2012	EAB NE	Prune - Train	9	Ash	Cimmaron
NE	3309	Fox Hunt Ln	Front	2	2	15	2012	EAB NE	Prune - Train	9	Ash	Cimmaron
NE	3309	Fox Hunt Ln	Side	1	2	15	2012	EAB NE	Prune - Train	10	Ash	Cimmaron
NE	3309	Fox Hunt Ln	Side	2	2	15	2012	EAB NE	Prune - Train	9	Ash	Cimmaron
NE	3309	Fox Hunt Ln	Side	3	2	15	2012	EAB NE	Prune - Train	8	Ash	Cimmaron
NE	3310	Fox Hunt Ln	Front	1	2	15	2012	EAB NE	Prune - Train	6	Ash	Cimmaron
NE	705	Foxfield Ct	Front	1	2	15	2012	EAB NE	Prune - Train	6	Ash	Marshall Seedless Gre
NE	3001	Glacier Ct	Front	1	2	15	2012	EAB NE	Prune - Train	7	Ash	Cimmaron
NE	3001	Glacier Ct	Front	2	2	15	2012	EAB NE	Prune - Train	4	Ash	Cimmaron
NE	3001	Glacier Ct	Front	3	2	15	2012	EAB NE	Prune - Train	5	Ash	Cimmaron
NE	1301	Hawkins Ct	Front	3	2	15	2012	EAB NE	Prune - Train	9	Ash	Cimmaron
NE	1301	Hawkins Ct	Side	1	2	15	2012	EAB NE	Prune - Train	8	Ash	Cimmaron
NE	1301	Hawkins Ct	Side	2	2	15	2012	EAB NE	Prune - Train	7	Ash	Cimmaron
NE	1301	Hawkins Ct	Side	3	2	15	2012	EAB NE	Prune - Train	7	Ash	Cimmaron
NE	1304	Hawkins Ct	Front	2	2	15	2012	EAB NE	Prune - Train	12	Ash	Cimmaron
NE	405	Hunt Club Dr	Front	1	2	15	2012	EAB NE	Prune - Train	4	Ash	Cimmaron

Summary Report  
EAB Confirmed, February through April, 2012

Quadrant	Address	Street	Side	Site	Confirmed Date		Condition	Maintenance	DBH	Species	
					MM	DD YY					
NE	405	Hunt Club Dr	Front	2	2	15 2012	EAB NE	Prune - Train	4	Ash	Cimmaron
NE	405	Hunt Club Dr	Front	3	2	15 2012	EAB NE	Prune - Train	4	Ash	Cimmaron
NE	405	Hunt Club Dr	Front	4	2	15 2012	EAB NE	Prune - Train	4	Ash	Cimmaron
NE	705	Indian Way	Front	2	2	15 2012	EAB NE	Prune - Train	9	Ash	Rosehill White
NE	709	Indian Way	Front	2	2	15 2012	EAB NE	Prune - Train	9	Ash	Cimmaron
NE	714	Indian Way	Front	1	2	15 2012	EAB NE	Prune - Train	9	Ash	Cimmaron
NE	714	Indian Way	Front	2	2	15 2012	EAB NE	Prune - Train	7	Ash	Cimmaron
NE	717	Indian Way	Front	3	2	15 2012	EAB NE	Prune - Train	8	Ash	Cimmaron
NE	718	Indian Way	Front	1	2	15 2012	EAB NE	Prune - Train	10	Ash	Cimmaron
NE	718	Indian Way	Front	4	2	15 2012	EAB NE	Prune - Train	9	Ash	Cimmaron
NE	718	Indian Way	Front	6	2	15 2012	EAB NE	Prune - Train	9	Ash	Cimmaron
NE	718	Indian Way	Front	7	2	15 2012	EAB NE	Prune - Train	8	Ash	Cimmaron
NE	718	Indian Way	Front	8	2	15 2012	EAB NE	Prune - Train	7	Ash	Cimmaron
NE	805	Indian Way	Front	1	2	15 2012	EAB NE	Prune - Train	7	Ash	Cimmaron
NE	809	Indian Way	Front	1	2	15 2012	EAB NE	Prune - Train	11	Ash	Cimmaron
NE	813	Indian Way	Front	1	2	15 2012	EAB NE	Prune - Train	8	Ash	Cimmaron
NE	813	Indian Way	Front	2	2	15 2012	EAB NE	Prune - Train	5	Ash	Cimmaron
NE	813	Indian Way	Front	3	2	15 2012	EAB NE	Prune - Train	6	Ash	Cimmaron
NE	1314	Keim Tr	Front	1	2	15 2012	EAB NE	Prune - Train	9	Ash	Cimmaron
NE	1314	Keim Tr	Front	2	2	15 2012	EAB NE	Prune - Train	9	Ash	Cimmaron
NE	1405	Keim Tr	Front	1	2	15 2012	EAB NE	Prune - Train	12	Ash	Cimmaron
NE	3117	King Alford Ct	Front	2	2	15 2012	EAB NE	Prune - Train	3	Ash	Cimmaron
NE	908	King Edward Ave	Front	2	2	15 2012	EAB NE	Prune - Train	10	Ash	Summit Green
NE	908	King Edward Ave	Front	3	2	15 2012	EAB NE	Prune - Train	11	Ash	Summit Green
NE	1101	King Edward Ave	Front	1	2	15 2012	EAB NE	Prune - Train	4	Ash	Windy City White
NE	2002	King Edward Ave	Side	1	2	15 2012	EAB NE	Prune - Train	3	Ash	Summit Green
NE	2002	King Edward Ave	Side	2	2	15 2012	EAB NE	Prune - Train	7	Ash	Summit Green
NE	901	King James Ave	Front	2	2	15 2012	EAB NE	Prune - Train	8	Ash	Cimmaron
NE	901	King James Ave	Front	3	2	15 2012	EAB NE	Prune - Train	10	Ash	Cimmaron
NE	902	King James Ave	Front	1	2	15 2012	EAB NE	Prune - Train	8	Ash	Cimmaron
NE	902	King James Ave	Front	2	2	15 2012	EAB NE	Prune - Train	6	Ash	Cimmaron
NE	902	King James Ave	Front	3	2	15 2012	EAB NE	Prune - Train	4	Ash	Cimmaron



Summary Report  
EAB Confirmed, February through April, 2012

Quadrant	Address	Street	Side	Site	Confirmed Date			Condition	Maintenance	DBH	Species	
					MM	DD	YY					
NE	905	King James Ave	Front	2	2	15	2012	EAB NE	Prune - Train	5	Ash	Cimmaron
NE	1001	King James Ave	Front	1	2	15	2012	EAB NE	Prune - Train	8	Ash	Cimmaron
NE	1004	King James Ave	Front	1	2	15	2012	EAB NE	Prune - Train	10	Ash	Summit Green
NE	1004	King James Ave	Front	2	2	15	2012	EAB NE	Prune - Train	9	Ash	Summit Green
NE	1102	King James Ave	Front	2	2	15	2012	EAB NE	Prune - Train	9	Ash	Cimmaron
NE	1104	King James Ave	Front	1	2	15	2012	EAB NE	Prune - Train	8	Ash	Summit Green
NE	1104	King James Ave	Front	2	2	15	2012	EAB NE	Prune - Train	8	Ash	Summit Green
NE	1104	King James Ave	Side	1	2	15	2012	EAB NE	Prune - Train	8	Ash	Cimmaron
NE	1204	King James Ave	Front	1	2	15	2012	EAB NE	Prune - Train	6	Ash	Cimmaron
NE	1204	King James Ave	Front	2	2	15	2012	EAB NE	Prune - Train	4	Ash	Patmore
NE	1302	King James Ave	Front	1	2	15	2012	EAB NE	Prune - Train	6	Ash	Rosehill White
NE	2502	King Richard Cir	Front	1	2	15	2012	EAB NE	Prune - Train	3	Ash	Marshall Seedless Gre
NE	2702	King Richard Cir	Front	2	2	15	2012	EAB NE	Prune - Train	3	Ash	Marshall Seedless Gre
NE	3012	Majestic Oaks Dr	Front	1	2	15	2012	EAB NE	Prune - Train	8	Ash	Summit Green
NE	3025	Majestic Oaks Dr	Front	2	2	15	2012	EAB NE	Prune - Train	3	Ash	Cimmaron
NE	3425	Majestic Oaks Dr	Front	1	2	15	2012	EAB NE	Prune - Train	3	Ash	Autumn Purple
NE	3502	Majestic Oaks Dr	Front	3	2	15	2012	EAB NE	Prune - Train	3	Ash	Autumn Purple
NE	2821	Majestic Oaks Ln	Front	2	2	15	2012	EAB NE	Prune - Train	3	Ash	Autumn Purple
NE	3031	Majestic Oaks Ln	Front	1	2	15	2012	EAB NE	Prune - Train	3	Ash	Autumn Purple
NE	3406	Oxbow Ln	Front	1	2	15	2012	EAB NE	Prune - Train	10	Ash	Cimmaron
NE	3407	Oxbow Ln	Front	6	2	15	2012	EAB NE	Prune - Train	6	Ash	Cimmaron
NE	3407	Oxbow Ln	Front	7	2	15	2012	EAB NE	Prune - Train	7	Ash	Cimmaron
NE	3407	Oxbow Ln	Front	8	2	15	2012	EAB NE	Prune - Train	9	Ash	Cimmaron
NE	3414	Oxbow Ln	Side	3	2	15	2012	EAB NE	Prune - Train	8	Ash	Cimmaron
NE	215	Persimmon Dr	Front	2	2	15	2012	EAB NE	Prune - Train	5	Ash	Cimmaron
NE	355	Persimmon Dr	Front	1	2	15	2012	EAB NE	Prune - Train	7	Ash	Cimmaron
NE	355	Persimmon Dr	Front	2	2	15	2012	EAB NE	Prune - Train	7	Ash	Cimmaron
NE	375	Persimmon Dr	Front	1	2	15	2012	EAB NE	Prune - Train	10	Ash	Cimmaron
NE	3756	Queen Anne Ct	Front	1	2	15	2012	EAB NE	Prune - Train	6	Ash	Summit Green
NE	3701	Queen Elizabeth Ct	Side	2	2	15	2012	EAB NE	Prune - Train	5	Ash	Marshall Seedless Gre
NE	3702	Queen Elizabeth Ct	Front	1	2	15	2012	EAB NE	Prune - Train	3	Ash	Patmore
NE	3706	Queen Elizabeth Ct	Front	1	2	15	2012	EAB NE	Prune - Train	3	Ash	Patmore

Summary Report  
EAB Confirmed, February through April, 2012

Quadrant	Address	Street	Side	Site	Confirmed Date	Condition	Maintenance	DBH	Species
NE	3503	Royal Fox Dr	Front	3	2 15 2012	EAB NE	Prune - Train	3	Ash Cimmaron
NE	3605	Royal Fox Dr	Front	2	2 15 2012	EAB NE	Prune - Train	6	Ash Cimmaron
NE	3008	Royal Queens Ct	Front	1	2 15 2012	EAB NE	Prune - Train	4	Ash Patmore
NE	4107	Royal Troon Ct	Front	1	2 15 2012	EAB NE	Prune - Train	6	Ash Cimmaron
NE	4109	Royal Troon Ct	Front	1	2 15 2012	EAB NE	Prune - Train	6	Ash Cimmaron
NE	4109	Royal Troon Ct	Front	2	2 15 2012	EAB NE	Prune - Train	7	Ash Cimmaron
NE	4115	Royal Troon Ct	Front	1	2 15 2012	EAB NE	Prune - Train	7	Ash Cimmaron
NE	905	Secretariat Ct	Front	1	2 15 2012	EAB NE	Prune - Train	9	Ash Cimmaron
NE	1961	Shenandoah Ln.	Front	1	2 15 2012	EAB NE	Prune - Train	3	Ash Cimmaron
NE	1981	Shenandoah Ln.	Front	1	2 15 2012	EAB NE	Prune - Train	3	Ash Cimmaron
NE	1991	Shenandoah Ln.	Side	1	2 15 2012	EAB NE	Prune - Train	3	Ash Autumn Purple
NE	812	Steeplechase Ct	Side	1	2 15 2012	EAB NE	Prune - Train	7	Ash Cimmaron
NE	812	Steeplechase Ct	Side	2	2 15 2012	EAB NE	Prune - Train	7	Ash Cimmaron
NE	812	Steeplechase Ct	Side	3	2 15 2012	EAB NE	Prune - Train	6	Ash Cimmaron
NE	710	Steeplechase Rd	Front	3	2 15 2012	EAB NE	Prune - Train	6	Ash Cimmaron
NE	718	Steeplechase Rd	Front	1	2 15 2012	EAB NE	Prune - Train	7	Ash Cimmaron
NE	799	Steeplechase Rd	Front	1	2 15 2012	EAB NE	Prune - Train	5	Ash Cimmaron
NE	16	Stirrup Cup Ct	Front	4	2 15 2012	EAB NE	Prune - Train	6	Ash Cimmaron
NE	16	Stirrup Cup Ct	Front	5	2 15 2012	EAB NE	Prune - Train	5	Ash Cimmaron
NE	37	Stirrup Cup Ct	Front	1	2 15 2012	EAB NE	Prune - Train	10	Ash Autumn Purple
NE	909	Stonehedge Rd	Front	1	2 15 2012	EAB NE	Prune - Train	4	Ash Cimmaron
NE	1006	Thoroughbred Cir	Front	2	2 15 2012	EAB NE	Prune - Train	10	Ash Cimmaron
NE	1009	Thoroughbred Cir	Front	2	2 15 2012	EAB NE	Prune - Train	8	Ash Cimmaron
NE	2705	Turnberry Rd	Front	1	2 15 2012	EAB NE	Prune - Train	5	Ash Rosehill White
NE	2806	Turnberry Rd	Front	2	2 15 2012	EAB NE	Prune - Train	4	Ash Cimmaron
NE	3117	Turnberry Rd	Front	1	2 15 2012	EAB NE	Prune - Train	17	Ash Cimmaron
NE	3117	Turnberry Rd	Front	2	2 15 2012	EAB NE	Prune - Train	17	Ash Cimmaron
NE	1201	Winners Cup Cir	Front	1	2 15 2012	EAB NE	Prune - Train	12	Ash Cimmaron
NE	1201	Winners Cup Cir	Front	2	2 15 2012	EAB NE	Prune - Train	9	Ash Cimmaron
NE	1201	Winners Cup Cir	Side	1	2 15 2012	EAB NE	Prune - Train	6	Ash Cimmaron
NE	1201	Winners Cup Cir	Side	2	2 15 2012	EAB NE	Prune - Train	6	Ash Cimmaron
NE	1201	Winners Cup Cir	Side	12	2 15 2012	EAB NE	Prune - Train	4	Ash Cimmaron

Summary Report

EAB Confirmed, February through April, 2012

Quadrant	Address	Street	Side	Site	Confirmed Date			Condition	Maintenance	DBH	Species	
					MM	DD	YY					
NE	1202	Winners Cup Cir	Side	1	2	15	2012	EAB NE	Prune - Train	3	Ash	Cimmaron
NE	1202	Winners Cup Cir	Side	2	2	15	2012	EAB NE	Prune - Train	4	Ash	Cimmaron
NE	1202	Winners Cup Cir	Side	3	2	15	2012	EAB NE	Prune - Train	3	Ash	Cimmaron
NE	1217	Winners Cup Cir	Side	1	2	15	2012	EAB NE	Prune - Train	8	Ash	Cimmaron
NE	1222	Winners Cup Cir	Front	1	2	15	2012	EAB NE	Prune - Train	9	Ash	Cimmaron
NE	1222	Winners Cup Cir	Front	2	2	15	2012	EAB NE	Prune - Train	7	Ash	Cimmaron
NE	1222	Winners Cup Cir	Front	3	2	15	2012	EAB NE	Prune - Train	11	Ash	Cimmaron
NE	1302	Winners Cup Cir	Front	1	2	15	2012	EAB NE	Prune - Train	9	Ash	Cimmaron
NE	1401	Winners Cup Cir	Front	2	2	15	2012	EAB NE	Prune - Train	12	Ash	Cimmaron
NE	1402	Winners Cup Cir	Front	3	2	15	2012	EAB NE	Prune - Train	12	Ash	Cimmaron
NE	1405	Winners Cup Cir	Front	1	2	15	2012	EAB NE	Prune - Train	9	Ash	Cimmaron
NE	1406	Winners Cup Cir	Front	3	2	15	2012	EAB NE	Prune - Train	7	Ash	Cimmaron
NE	1410	Winners Cup Cir	Front	1	2	15	2012	EAB NE	Prune - Train	14	Ash	Cimmaron
NE	1410	Winners Cup Cir	Front	2	2	15	2012	EAB NE	Prune - Train	9	Ash	Cimmaron
NE	1410	Winners Cup Cir	Front	3	2	15	2012	EAB NE	Prune - Train	8	Ash	Cimmaron
NE	1501	Winners Cup Cir	Front	1	2	15	2012	EAB NE	Prune - Train	13	Ash	Cimmaron
NE	1601	Winners Cup Cir	Front	1	2	15	2012	EAB NE	Prune - Train	7	Ash	Cimmaron
NE	1606	Winners Cup Cir	Front	1	2	15	2012	EAB NE	Prune - Train	10	Ash	Cimmaron
NE	1610	Winners Cup Cir	Front	2	2	15	2012	EAB NE	Prune - Train	11	Ash	Cimmaron
SE	809	11th Ave /S	Front	1	2	15	2012	EAB SE	Prune - Train	2	Ash	Cimmaron
SE	1137	Hidden Glen Circle	Side	1	2	15	2012	EAB SE	Prune - Train	3	Ash	Rosehill White
SE	1813	Lucyille Ct	Side	1	2	15	2012	EAB SE	Prune - Train	2	Ash	Cimmaron
SE	1813	Lucyille Ct	Side	3	2	15	2012	EAB SE	Prune - Train	4	Ash	Rosehill White
SE	1813	Lucyille Ct	Side	4	2	15	2012	EAB SE	Prune - Train	4	Ash	Rosehill White
SE	1813	Lucyille Ct	Side	5	2	15	2012	EAB SE	Prune - Train	4	Ash	Rosehill White
SE	1814	Lucyille Ct	Side	5	2	15	2012	EAB SE	Prune - Train	4	Ash	Rosehill White
SE	1831	Lucyille Ct	Front	1	2	15	2012	EAB SE	Prune - Train	4	Ash	Rosehill White
SE	1832	Lucyille Ct	Front	1	2	15	2012	EAB SE	Prune - Train	9	Ash	Rosehill White
SE	1835	Lucyille Ct	Front	1	2	15	2012	EAB SE	Prune - Train	4	Ash	Rosehill White
SE	1839	Lucyille Ct	Front	1	2	15	2012	EAB SE	Prune - Train	4	Ash	Rosehill White
SE	1840	Lucyille Ct	Median	2	2	15	2012	EAB SE	Prune - Train	4	Ash	Rosehill White
SE	1811	Moore Ct	Front	1	2	15	2012	EAB SE	Prune - Train	4	Ash	Cimmaron

Summary Report

EAB Confirmed, February through April, 2012

Quadrant	Address	Street	Side	Site	Confirmed Date		Condition	Maintenance	DBH	Species	
					MM	DD YY					
SE	1823	Moore Ct	Front	1	2	15 2012	EAB SE	Prune - Train	4	Ash	Rosehill White
SE	1827	Moore Ct	Front	1	2	15 2012	EAB SE	Prune - Train	4	Ash	Cimmaron
SE	1835	Moore Ct	Front	1	2	15 2012	EAB SE	Prune - Train	4	Ash	Cimmaron
SE	1839	Moore Ct	Front	1	2	15 2012	EAB SE	Prune - Train	4	Ash	Cimmaron
SE	1840	Moore Ct	Median	1	2	15 2012	EAB SE	Prune - Train	4	Ash	Rosehill White
SE	1840	Moore Ct	Median	2	2	15 2012	EAB SE	Prune - Train	4	Ash	Rosehill White
SE	1843	Moore Ct	Front	1	2	15 2012	EAB SE	Prune - Train	4	Ash	Cimmaron
SE	1463	Liberty Ct	Front	1	2	15 2012	EAB SE	Remove	11	Ash	Cimmaron
NE	3102	Blackhawk Ct	Front	2	2	15 2012	EAB	Treating with Safari	11	Ash	Cimmaron
NE	902	Fox Chase Cir	Front	2	2	15 2012	EAB	Treating with Safari	8	Ash	Cimmaron
NE	904	Fox Chase Cir	Front	1	2	15 2012	EAB	Treating with Safari	8	Ash	Rosehill White
NE	902	Fox Chase Ct	Front	1	2	15 2012	EAB	Treating with Safari	11	Ash	Cimmaron
NE	3801	King Richard Ct	Side	1	2	15 2012	EAB	Treating with Safari	7	Ash	Summit Green
NE	3501	Royal Fox Dr	Front	1	2	15 2012	EAB	Treating with Safari	9	Ash	Cimmaron
NE	3501	Royal Fox Dr	Front	2	2	15 2012	EAB	Treating with Safari	11	Ash	Cimmaron
NE	3503	Royal Fox Dr	Front	2	2	15 2012	EAB	Treating with Safari	10	Ash	Cimmaron
NE	3605	Royal Fox Dr	Front	3	2	15 2012	EAB	Treating with Safari	12	Ash	Cimmaron
NE	1114	Thoroughbred Cir	Front	1	2	15 2012	EAB	Treating with Safari	13	Ash	Cimmaron
NE	1114	Thoroughbred Cir	Front	2	2	15 2012	EAB	Treating with Safari	14	Ash	Cimmaron
NE	1213	Thoroughbred Cir	Front	2	2	15 2012	EAB	Treating with Safari	17	Ash	Cimmaron
NE	3102	Turnberry Rd	Front	2	2	15 2012	EAB	Treating with Safari	4	Ash	Rosehill White
NE	3108	Turnberry Rd	Front	1	2	15 2012	EAB	Treating with Safari	15	Ash	Rosehill White
NE	3110	Turnberry Rd	Front	2	2	15 2012	EAB	Treating with Safari	13	Ash	Rosehill White
SE	1505	Banbury Ave	Front	2	2	15 2012	EAB SE	Treating with Safari	19	Ash	Rosehill White
SE	1534	Banbury Ave	Front	2	2	15 2012	EAB SE	Treating with Safari	16	Ash	Rosehill White
NE	1510	Keim Ct	Front	3	2	18 2012	EAB	Prune - Routine	6	Ash	Cimmaron
NE	1506	Keim Ct	Front	4	2	18 2012	EAB	Prune - Train	6	Ash	Cimmaron
SW	800	Westfield Dr	Front	2	2	27 2012	EAB	EAB TREATING	17	Ash	Cimmaron
SW	800	Westfield Dr	Front	3	2	27 2012	EAB	EAB TREATING	20	Ash	Cimmaron
NE	3301	Oxbow Ln	Front	2	2	28 2012	EAB NE	EAB TREATING	9	Ash	Cimmaron
SE	1216	Adams Ave	Side	2	2	28 2012	EAB	Prune - Train	3	Ash	Summit Green
FW	315	Valley View Dr	Front	3	3	15 2012	EAB FW	EAB TREATING	7	Ash	Autumn Purple



Summary Report  
EAB Confirmed, February through April, 2012

Quadrant	Address	Street	Side	Site	Confirmed Date	Condition	Maintenance	DBH	Species
FW	319	Valley View Dr	Side	3	3 15 2012	EAB FW	Prune - Routine	8	Autumn Purple
NE	451	Dunham Rd	Front	1	3 15 2012	EAB NE	Prune - Routine	6	Windy City White
NE	451	Dunham Rd	Front	2	3 15 2012	EAB NE	Prune - Routine	6	Windy City White
NE	451	Dunham Rd	Front	3	3 15 2012	EAB NE	Prune - Routine	6	Windy City White
NE	451	Dunham Rd	Front	4	3 15 2012	EAB NE	Prune - Routine	6	Windy City White
NE	613	Steeplechase Rd	Front	1	3 15 2012	EAB NE	Prune - Routine	9	Cimmaron
NE	613	Steeplechase Rd	Front	2	3 15 2012	EAB NE	Prune - Routine	9	Cimmaron
NE	801	Steeplechase Rd	Front	3	3 15 2012	EAB NE	Prune - Routine	6	Cimmaron
FW	202	Grand Ridge Rd	Front	1	3 15 2012	EAB FW	Prune - Train	3	Marshall Seedless Gre
FW	209	Grand Ridge Rd	Front	1	3 15 2012	EAB FW	Prune - Train	3	Rosehill White
FW	281	Grand Ridge Rd	Front	1	3 15 2012	EAB FW	Prune - Train	3	Autumn Purple
FW	318	Grand Ridge Rd	Front	1	3 15 2012	EAB FW	Prune - Train	3	Autum Purple
FW	319	Grand Ridge Rd	Front	1	3 15 2012	EAB FW	Prune - Train	15	Cimmaron
FW	323	Grand Ridge Rd	Front	1	3 15 2012	EAB FW	Prune - Train	3	Autum Purple
FW	267	Sunbury Dr	Front	1	3 15 2012	EAB FW	Prune - Train	3	Cimmaron
FW	407	Valley View Dr	Front	1	3 15 2012	EAB FW	Prune - Train	8	Rosehill White
NE	799	Steeplechase Rd	Front	11	3 15 2012	EAB NE	Prune - Train	15	Cimmaron
<b>Total EAB Confirmed Sites (February thru April, 2012):</b>							<b>561</b>		