



AGENDA ITEM EXECUTIVE SUMMARY

Title:	Recommendation to approve Ordinance Redistricting the City of St. Charles
Presenter:	Brian Townsend

Please check appropriate box:

	Government Operations		Government Services
	Planning & Development	X	City Council (5/7/12)
	Public Hearing		

Estimated Cost:		Budgeted:	YES		NO	
-----------------	--	-----------	-----	--	----	--

If NO, please explain how item will be funded:

Executive Summary:

The City of St. Charles is divided into five districts, or wards, for the purpose of electing aldermen to the City Council. As a result of the 2010 census, the City of St. Charles is required to review its ward boundaries and make changes to balance population.

A ward map was previously approved by the City Council, subject to legal review. The approved map split census block 2000 between wards 3 and 4. Legal counsel advises against splitting census blocks because those are the lowest level of geometry used for redistricting. In addition, taking a special census of this area today could be problematic because the city would be using 2012 data for block 2000 and 2010 census data for the balance of the city. Finally, the population data indicates that if block 2000 stays in ward 3, the population deviations will remain within the 1% threshold that has been recognized as the standard to follow. Therefore, block 2000 will remain in ward 3.

Attached is an ordinance prepared by legal counsel to formally approve and enact the new ward map for the City of St. Charles.

Attachments: *(please list)*

Ordinance approving ward map (w/ Exhibits 1 and 2)
Map showing location of Block 2000

Recommendation / Suggested Action *(briefly explain):*

Recommend that the City Council approve an Ordinance Redistricting the City of St. Charles.

<i>For office use only:</i>	<i>Agenda Item Number:</i> IC
-----------------------------	-------------------------------

City of St. Charles, Illinois
Ordinance 2012-M- _____

An Ordinance Redistricting the City of St. Charles

WHEREAS, the Illinois Municipal Code requires that the City of St. Charles (the "City") redistrict the City to ensure that the wards have population that are nearly as equal as practicable and that the wards be contiguous and compact as practicable (65 ILCS 5/5-2-4); and

WHEREAS, the City has studied the issue of redistricting its wards and drawn a new ward map in compliance with the Illinois Municipal Code.

NOW, THEREFORE, BE IT ORDAINED BY THE CITY COUNCIL OF THE CITY OF ST. CHARLES, KANE AND DUPAGE COUNTIES, ILLINOIS, AS FOLLOWS:

SECTION ONE: That the ward map attached hereto as Exhibit 1 and the census tract delineation attached hereto as Exhibit 2, which are made a part hereof, are hereby adopted.

SECTION TWO: That a certified copy of this Ordinance shall be transmitted to the election authorities for Kane and DuPage Counties.

SECTION THREE: That this Ordinance shall be in full force and effect from and after its passage, approval and publication in pamphlet form as provided by law.

PRESENTED to the City Council of the City of St. Charles, Illinois, this ____ day of _____, 2012.

PASSED by the City Council of the City of St. Charles, Illinois, this ____ day of _____, 2012.

APPROVED by the Mayor of the City of St. Charles, Illinois, this ____ day of _____, 2012.

Donald P. DeWitte, Mayor

ATTEST:

City Clerk

COUNCIL VOTE:
Ayes:
Nays

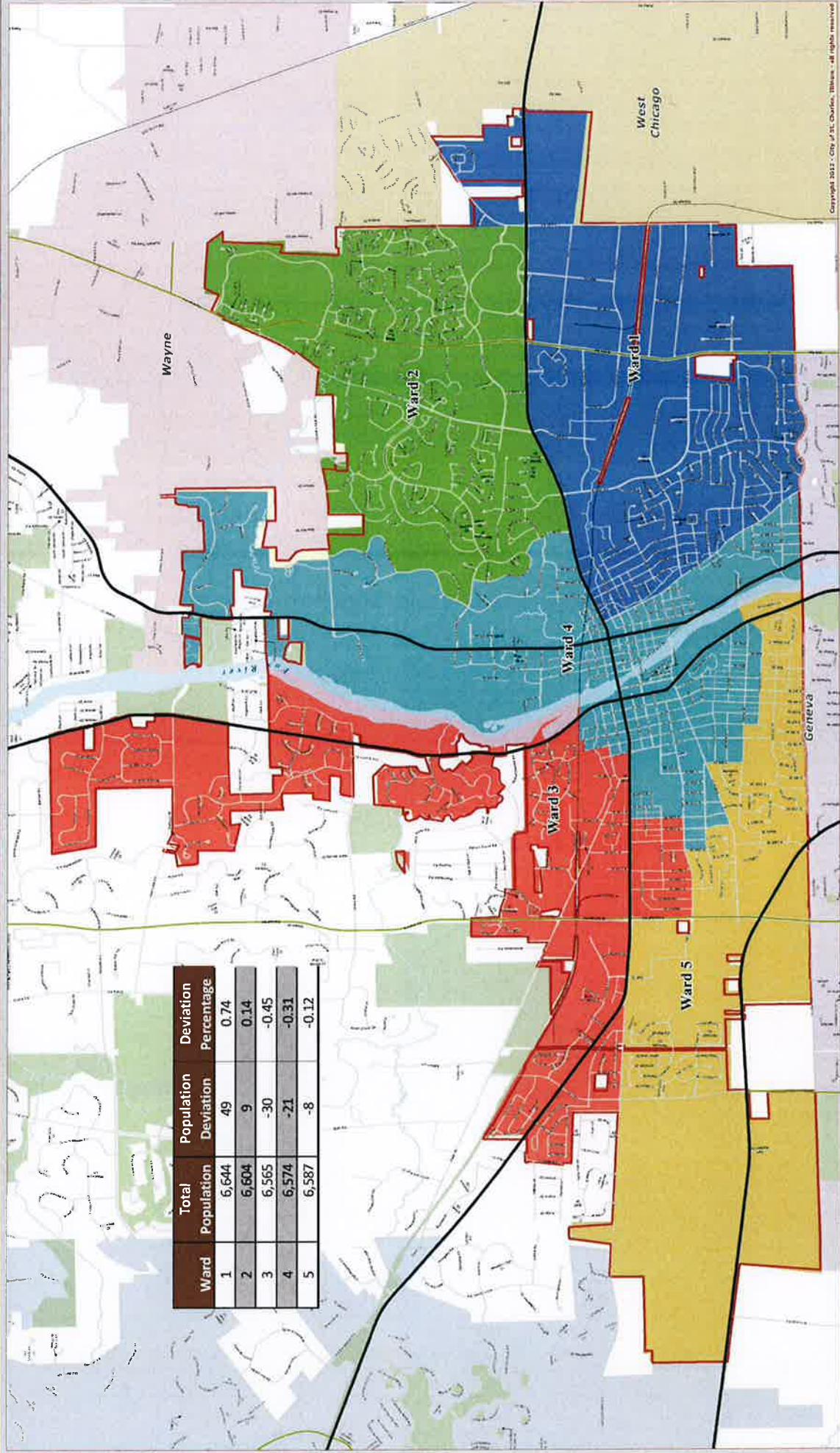
Absent:
Abstain:

APPROVED AS TO FORM:

City Attorney

DATE: _____

Approved Ward Boundaries



Ward	Total Population	Population Deviation	Deviation Percentage
1	6,644	49	0.74
2	6,604	9	0.14
3	6,565	-30	-0.45
4	6,574	-21	-0.31
5	6,587	-8	-0.12

Wards

- 1 (Blue)
- 2 (Green)
- 3 (Red)
- 4 (Teal)
- 5 (Yellow)

Copyright 2017 - City of St. Charles, Illinois - All rights reserved.

Plan Last Edited on:

District: 1

Total Population: 6,644 Ideal: 6,594 Deviation: 0.8%

1	Counties and Cities	Population
	DuPage County	543

98	Counties and Cities	Population
	Kane County (Part)	6,101

8520.02		
170898520021000 (Block 1000)		289
170898520021001 (Block 1001)		11
170898520021002 (Block 1002)		32
170898520021003 (Block 1003)		110
170898520021004 (Block 1004)		85
170898520021005 (Block 1005)		107
170898520021006 (Block 1006)		70
170898520021007 (Block 1007)		97
170898520021008 (Block 1008)		20
170898520021009 (Block 1009)		39
170898520021010 (Block 1010)		110
170898520021011 (Block 1011)		70
170898520021012 (Block 1012)		56
170898520021013 (Block 1013)		42
170898520021014 (Block 1014)		60
170898520021015 (Block 1015)		38
170898520021016 (Block 1016)		190
170898520021017 (Block 1017)		4
170898520021018 (Block 1018)		5
170898520021019 (Block 1019)		73
170898520021020 (Block 1020)		65
170898520021021 (Block 1021)		21
170898520021022 (Block 1022)		11
170898520021023 (Block 1023)		0
170898520023000 (Block 3000)		341
170898520023001 (Block 3001)		60
170898520023002 (Block 3002)		86
170898520023003 (Block 3003)		65
170898520023004 (Block 3004)		72
170898520023005 (Block 3005)		68
170898520023006 (Block 3006)		318
170898520023007 (Block 3007)		76
170898520023008 (Block 3008)		90
170898520023009 (Block 3009)		86
170898520023011 (Block 3011)		458
170898520023012 (Block 3012)		47
170898520023013 (Block 3013)		136
170898520023014 (Block 3014)		0
170898520023015 (Block 3015)		0
170898520023016 (Block 3016)		48
170898520023017 (Block 3017)		19
170898520024000 (Block 4000)		0
170898520024001 (Block 4001)		0
170898520024003 (Block 4003)		83
170898520024004 (Block 4004)		28
170898520024005 (Block 4005)		29

170898520024006 (Block 4006)	0
170898520024007 (Block 4007)	0
170898520024008 (Block 4008)	4
170898520024009 (Block 4009)	0
170898520024010 (Block 4010)	467
170898520024011 (Block 4011)	43
170898520024012 (Block 4012)	199
170898520024013 (Block 4013)	78
170898520024014 (Block 4014)	0
170898520024016 (Block 4016)	0
170898520024017 (Block 4017)	0
170898520024018 (Block 4018)	0
170898520024019 (Block 4019)	0
170898520024020 (Block 4020)	0
170898520024021 (Block 4021)	110
170898520024022 (Block 4022)	236
170898520024023 (Block 4023)	90
170898520024024 (Block 4024)	59
170898520024025 (Block 4025)	66
170898520024026 (Block 4026)	53
170898520024027 (Block 4027)	46
170898520024028 (Block 4028)	32
170898520024029 (Block 4029)	15
170898520024030 (Block 4030)	78
170898520024031 (Block 4031)	22
170898520024032 (Block 4032)	25
170898520024033 (Block 4033)	40
170898520024034 (Block 4034)	41
170898520024035 (Block 4035)	42
170898520024036 (Block 4036)	0
170898520024038 (Block 4038)	0
170898520024039 (Block 4039)	79
170898520024040 (Block 4040)	111
170898520024041 (Block 4041)	0
170898520024042 (Block 4042)	38
170898520024043 (Block 4043)	83
170898520024044 (Block 4044)	0
170898520024045 (Block 4045)	0
170898520024046 (Block 4046)	0
170898520024053 (Block 4053)	71
8523	
170898523001000 (Block 1000)	12
170898523001017 (Block 1017)	8
170898523001018 (Block 1018)	15
170898523001019 (Block 1019)	9
170898523001020 (Block 1020)	11
170898523001021 (Block 1021)	6
170898523001022 (Block 1022)	7
170898523001041 (Block 1041)	39
170898523001042 (Block 1042)	7
170898523001043 (Block 1043)	20
170898523001048 (Block 1048)	102
170898523001049 (Block 1049)	22

District: 2

Total Population: 6,604 Ideal: 6,594 Deviation: 0.2%

72

Kane County (Part)

Population

6,604

8520.03	
170898520031002 (Block 1002)	159
170898520031003 (Block 1003)	77
170898520031004 (Block 1004)	235

170898520031007 (Block 1007)	23
170898520031009 (Block 1009)	134
170898520031023 (Block 1023)	133
170898520031024 (Block 1024)	52
170898520031025 (Block 1025)	110
170898520031026 (Block 1026)	23
170898520031027 (Block 1027)	13
170898520031028 (Block 1028)	78
170898520032000 (Block 2000)	215
170898520032001 (Block 2001)	61
170898520032004 (Block 2004)	349
170898520032005 (Block 2005)	43
170898520032006 (Block 2006)	0
170898520032007 (Block 2007)	41
170898520032008 (Block 2008)	36
170898520032009 (Block 2009)	0
170898520032010 (Block 2010)	9
170898520032011 (Block 2011)	238
170898520032012 (Block 2012)	27
170898520032013 (Block 2013)	16
170898520032014 (Block 2014)	1
170898520032015 (Block 2015)	9
170898520032016 (Block 2016)	414
170898520032017 (Block 2017)	54
170898520032018 (Block 2018)	104
170898520032019 (Block 2019)	28
170898520032020 (Block 2020)	153
170898520032021 (Block 2021)	29
170898520032022 (Block 2022)	36
170898520032023 (Block 2023)	308
170898520032024 (Block 2024)	38
170898520032025 (Block 2025)	0
170898520032026 (Block 2026)	336
170898520033002 (Block 3002)	406
170898520033003 (Block 3003)	0
170898520033006 (Block 3006)	215
170898520033007 (Block 3007)	102
170898520033008 (Block 3008)	84
170898520033014 (Block 3014)	530
170898520033015 (Block 3015)	18
170898520033016 (Block 3016)	86
170898520033017 (Block 3017)	62
170898520033018 (Block 3018)	103
170898520033019 (Block 3019)	47
170898520033020 (Block 3020)	92
170898520033021 (Block 3021)	139
170898520033022 (Block 3022)	59
170898520033023 (Block 3023)	29
170898520033024 (Block 3024)	0
170898520033025 (Block 3025)	216
170898520033026 (Block 3026)	3
170898520033027 (Block 3027)	0
170898520033028 (Block 3028)	52
170898520033029 (Block 3029)	179
170898520033030 (Block 3030)	124
170898520033031 (Block 3031)	174
170898520033032 (Block 3032)	0
170898520033033 (Block 3033)	2
170898520033034 (Block 3034)	0
170898520033035 (Block 3035)	0
170898520033036 (Block 3036)	73
170898520033037 (Block 3037)	97
170898520033038 (Block 3038)	61
170898520033039 (Block 3039)	45
170898520033040 (Block 3040)	0

170898520033041 (Block 3041)	0
170898520033042 (Block 3042)	0
170898520033043 (Block 3043)	15
170898520033044 (Block 3044)	9

District: 3

Total Population: 6,565 Ideal: 6,594 Deviation: -0.4%

54

Population

Kane County (Part)

4,179

8522.02

170898522021000 (Block 1000)	175
170898522021001 (Block 1001)	0
170898522021002 (Block 1002)	0
170898522021003 (Block 1003)	82
170898522021005 (Block 1005)	47
170898522021006 (Block 1006)	7
170898522021007 (Block 1007)	54
170898522021008 (Block 1008)	150
170898522021009 (Block 1009)	121
170898522021010 (Block 1010)	70
170898522021019 (Block 1019)	185
170898522021020 (Block 1020)	49
170898522021021 (Block 1021)	38
170898522021022 (Block 1022)	82
170898522021023 (Block 1023)	56
170898522021024 (Block 1024)	0
170898522021025 (Block 1025)	0
170898522021026 (Block 1026)	3
170898522021027 (Block 1027)	75
170898522021028 (Block 1028)	171
170898522021029 (Block 1029)	80
170898522021031 (Block 1031)	80
170898522021032 (Block 1032)	57
170898522021033 (Block 1033)	85
170898522021034 (Block 1034)	37
170898522021044 (Block 1044)	53
170898522021045 (Block 1045)	21
170898522021047 (Block 1047)	368
170898522021048 (Block 1048)	48
170898522021049 (Block 1049)	47
170898522021050 (Block 1050)	85
170898522021051 (Block 1051)	65
170898522021052 (Block 1052)	53
170898522021053 (Block 1053)	95
170898522021054 (Block 1054)	149
170898522022000 (Block 2000)	55
170898522022001 (Block 2001)	72
170898522022002 (Block 2002)	90
170898522022004 (Block 2004)	38
170898522022005 (Block 2005)	280
170898522022006 (Block 2006)	126
170898522022007 (Block 2007)	19
170898522022008 (Block 2008)	37
170898522022009 (Block 2009)	12
170898522022010 (Block 2010)	91
170898522022011 (Block 2011)	48
170898522022032 (Block 2032)	37
170898522022033 (Block 2033)	101
170898522022034 (Block 2034)	26
170898522023000 (Block 3000)	130
170898522023001 (Block 3001)	78
170898522023002 (Block 3002)	46

170898522023003 (Block 3003)	62
170898522023004 (Block 3004)	143

2

Kane County (Part)

Population

2,386

17089852101 (8521.01)	116
17089852102 (8521.02)	2,270

District: 4

Total Population: 6,574 Ideal: 6,594 Deviation: -0.3%

249

Kane County (Part)

Population

6,574

8520.01	
170898520012059 (Block 2059)	75
170898520012060 (Block 2060)	91
170898520012068 (Block 2068)	81
170898520012072 (Block 2072)	2
170898520014023 (Block 4023)	2
170898520014025 (Block 4025)	0
170898520014036 (Block 4036)	0
170898520014038 (Block 4038)	0
170898520014039 (Block 4039)	0
170898520014040 (Block 4040)	64
170898520014042 (Block 4042)	0
170898520014043 (Block 4043)	0
170898520014044 (Block 4044)	0
8520.02	
170898520022000 (Block 2000)	9
170898520022001 (Block 2001)	30
170898520022002 (Block 2002)	15
170898520022003 (Block 2003)	15
170898520022004 (Block 2004)	12
170898520022005 (Block 2005)	7
170898520022006 (Block 2006)	17
170898520022007 (Block 2007)	3
170898520022008 (Block 2008)	13
170898520022009 (Block 2009)	19
170898520022010 (Block 2010)	20
170898520022011 (Block 2011)	16
170898520022012 (Block 2012)	16
170898520022013 (Block 2013)	13
170898520022014 (Block 2014)	13
170898520022015 (Block 2015)	24
170898520022016 (Block 2016)	177
170898520022017 (Block 2017)	26
170898520022018 (Block 2018)	68
170898520022019 (Block 2019)	23
170898520022020 (Block 2020)	25
170898520022021 (Block 2021)	0
170898520022022 (Block 2022)	0
170898520022023 (Block 2023)	0
170898520022024 (Block 2024)	0
170898520022025 (Block 2025)	0
170898520022026 (Block 2026)	75
170898520022027 (Block 2027)	42
170898520022028 (Block 2028)	78
170898520022029 (Block 2029)	36
170898520022030 (Block 2030)	40
170898520022031 (Block 2031)	31
170898520022032 (Block 2032)	18
170898520022033 (Block 2033)	1

170898520022034 (Block 2034)	11
170898520022035 (Block 2035)	2
170898520022036 (Block 2036)	7
170898520022037 (Block 2037)	46
170898520022038 (Block 2038)	38

8520.03

170898520031006 (Block 1006)	45
170898520031008 (Block 1008)	151
170898520031010 (Block 1010)	176
170898520031011 (Block 1011)	255
170898520031012 (Block 1012)	57
170898520031013 (Block 1013)	24
170898520031014 (Block 1014)	35
170898520031015 (Block 1015)	0
170898520031016 (Block 1016)	0
170898520031017 (Block 1017)	19
170898520031018 (Block 1018)	64
170898520031019 (Block 1019)	50
170898520031020 (Block 1020)	58
170898520031021 (Block 1021)	32
170898520031022 (Block 1022)	16
170898520031029 (Block 1029)	15
170898520031030 (Block 1030)	27
170898520031031 (Block 1031)	5
170898520031032 (Block 1032)	10
170898520031033 (Block 1033)	15
170898520031034 (Block 1034)	11
170898520031035 (Block 1035)	21
170898520031036 (Block 1036)	16
170898520031037 (Block 1037)	8
170898520031038 (Block 1038)	8
170898520031039 (Block 1039)	0
170898520031040 (Block 1040)	123

8522.01

170898522011009 (Block 1009)	50
170898522012000 (Block 2000)	39
170898522012001 (Block 2001)	27
170898522012002 (Block 2002)	45
170898522012003 (Block 2003)	54
170898522012004 (Block 2004)	52
170898522012005 (Block 2005)	47
170898522012006 (Block 2006)	77
170898522012007 (Block 2007)	27
170898522012008 (Block 2008)	30
170898522012009 (Block 2009)	45
170898522012010 (Block 2010)	31
170898522012011 (Block 2011)	74
170898522012012 (Block 2012)	41
170898522012017 (Block 2017)	33
170898522012018 (Block 2018)	24
170898522014000 (Block 4000)	21
170898522014001 (Block 4001)	69
170898522014002 (Block 4002)	17
170898522014003 (Block 4003)	0
170898522014004 (Block 4004)	63
170898522014005 (Block 4005)	57
170898522014006 (Block 4006)	26
170898522014007 (Block 4007)	38
170898522014008 (Block 4008)	75
170898522014009 (Block 4009)	33
170898522014010 (Block 4010)	49
170898522014011 (Block 4011)	37
170898522014012 (Block 4012)	13
170898522014013 (Block 4013)	45

170898522014014 (Block 4014)	35
170898522014015 (Block 4015)	42
170898522014018 (Block 4018)	58
170898522014019 (Block 4019)	31
170898522014020 (Block 4020)	33
170898522014021 (Block 4021)	51
170898522014022 (Block 4022)	66
170898522014023 (Block 4023)	50
170898522014024 (Block 4024)	17
170898522014025 (Block 4025)	0
170898522014026 (Block 4026)	144
170898522014027 (Block 4027)	39
170898522014028 (Block 4028)	63
170898522014029 (Block 4029)	73

8522.02

170898522022012 (Block 2012)	21
170898522022013 (Block 2013)	24
170898522022014 (Block 2014)	39
170898522022015 (Block 2015)	20
170898522022016 (Block 2016)	0
170898522022017 (Block 2017)	22
170898522022018 (Block 2018)	62
170898522022019 (Block 2019)	0
170898522022020 (Block 2020)	9
170898522022021 (Block 2021)	26
170898522022022 (Block 2022)	5
170898522022023 (Block 2023)	21
170898522022024 (Block 2024)	17
170898522022025 (Block 2025)	2
170898522022026 (Block 2026)	25
170898522022027 (Block 2027)	14
170898522022028 (Block 2028)	25
170898522022029 (Block 2029)	24
170898522022030 (Block 2030)	38
170898522022031 (Block 2031)	31

8523

170898523001001 (Block 1001)	0
170898523001002 (Block 1002)	4
170898523001003 (Block 1003)	10
170898523001004 (Block 1004)	24
170898523001005 (Block 1005)	9
170898523001006 (Block 1006)	7
170898523001007 (Block 1007)	0
170898523001008 (Block 1008)	16
170898523001009 (Block 1009)	16
170898523001010 (Block 1010)	21
170898523001011 (Block 1011)	26
170898523001012 (Block 1012)	17
170898523001013 (Block 1013)	17
170898523001014 (Block 1014)	0
170898523001015 (Block 1015)	15
170898523001016 (Block 1016)	0
170898523001023 (Block 1023)	0
170898523001024 (Block 1024)	6
170898523001025 (Block 1025)	0
170898523001026 (Block 1026)	0
170898523001027 (Block 1027)	16
170898523001028 (Block 1028)	0
170898523001029 (Block 1029)	0
170898523001030 (Block 1030)	1
170898523001031 (Block 1031)	0
170898523001032 (Block 1032)	0
170898523001033 (Block 1033)	5
170898523001034 (Block 1034)	1

170898523001035 (Block 1035)	9
170898523001036 (Block 1036)	0
170898523001037 (Block 1037)	25
170898523001038 (Block 1038)	0
170898523001039 (Block 1039)	3
170898523001040 (Block 1040)	0
170898523001044 (Block 1044)	12
170898523001045 (Block 1045)	19
170898523001046 (Block 1046)	6
170898523001047 (Block 1047)	34
170898523001050 (Block 1050)	28
170898523001051 (Block 1051)	18
170898523001052 (Block 1052)	11
170898523001053 (Block 1053)	0
170898523001054 (Block 1054)	0
170898523001055 (Block 1055)	16
170898523001056 (Block 1056)	16
170898523001057 (Block 1057)	19
170898523001058 (Block 1058)	24
170898523001059 (Block 1059)	17
170898523001060 (Block 1060)	12
170898523001061 (Block 1061)	45
170898523001062 (Block 1062)	56
170898523001063 (Block 1063)	31
170898523001064 (Block 1064)	17
170898523001065 (Block 1065)	10
170898523001066 (Block 1066)	0
170898523001067 (Block 1067)	0
170898523001068 (Block 1068)	12
170898523001069 (Block 1069)	39
170898523001070 (Block 1070)	16
170898523001071 (Block 1071)	0
170898523001072 (Block 1072)	0
170898523001073 (Block 1073)	0
170898523001074 (Block 1074)	0
170898523002000 (Block 2000)	0
170898523002001 (Block 2001)	108
170898523002002 (Block 2002)	25
170898523002003 (Block 2003)	42
170898523002004 (Block 2004)	8
170898523002005 (Block 2005)	8
170898523002006 (Block 2006)	0
170898523002007 (Block 2007)	0
170898523002008 (Block 2008)	0
170898523002009 (Block 2009)	0
170898523002010 (Block 2010)	0
170898523002011 (Block 2011)	0
170898523002012 (Block 2012)	75
170898523002013 (Block 2013)	10
170898523002014 (Block 2014)	8
170898523002015 (Block 2015)	0
170898523002016 (Block 2016)	8
170898523002017 (Block 2017)	0
170898523002018 (Block 2018)	31
170898523002019 (Block 2019)	16
170898523002020 (Block 2020)	0
170898523002021 (Block 2021)	0
170898523002022 (Block 2022)	0
170898523002023 (Block 2023)	0
170898523002024 (Block 2024)	55
170898523002025 (Block 2025)	14
170898523002026 (Block 2026)	0
170898523002027 (Block 2027)	0
170898523002028 (Block 2028)	22
170898523002029 (Block 2029)	39

170898523002030 (Block 2030)	12
170898523002031 (Block 2031)	17
170898523002032 (Block 2032)	17
170898523002033 (Block 2033)	23
170898523002034 (Block 2034)	29
170898523002035 (Block 2035)	20
170898523002036 (Block 2036)	47
170898523002037 (Block 2037)	22
170898523002038 (Block 2038)	24
170898523002039 (Block 2039)	17
170898523002040 (Block 2040)	263
170898523002041 (Block 2041)	0
170898523002042 (Block 2042)	0

District: 5

Total Population: 6,587 Ideal: 6,594 Deviation: -0.1%

84

Population

Kane County (Part)

6,587

8522.01	
170898522011000 (Block 1000)	91
170898522011001 (Block 1001)	77
170898522011002 (Block 1002)	167
170898522011003 (Block 1003)	190
170898522011004 (Block 1004)	187
170898522011005 (Block 1005)	66
170898522011006 (Block 1006)	265
170898522011007 (Block 1007)	121
170898522011008 (Block 1008)	86
170898522011010 (Block 1010)	2
170898522011011 (Block 1011)	58
170898522011012 (Block 1012)	65
170898522011013 (Block 1013)	60
170898522011014 (Block 1014)	0
170898522011015 (Block 1015)	0
170898522012013 (Block 2013)	162
170898522012014 (Block 2014)	47
170898522012015 (Block 2015)	4
170898522012016 (Block 2016)	24
170898522013000 (Block 3000)	46
170898522013001 (Block 3001)	32
170898522013002 (Block 3002)	36
170898522013003 (Block 3003)	31
170898522013004 (Block 3004)	40
170898522013005 (Block 3005)	54
170898522013006 (Block 3006)	237
170898522013007 (Block 3007)	80
170898522013008 (Block 3008)	33
170898522013009 (Block 3009)	36
170898522013010 (Block 3010)	25
170898522013011 (Block 3011)	87
170898522013012 (Block 3012)	21
170898522013013 (Block 3013)	31
170898522013014 (Block 3014)	59
170898522013015 (Block 3015)	62
170898522013016 (Block 3016)	34
170898522013017 (Block 3017)	23
170898522014016 (Block 4016)	68
170898522014017 (Block 4017)	74
8522.02	
170898522021042 (Block 1042)	9
170898522021043 (Block 1043)	0
170898522021055 (Block 1055)	0

170898522021056 (Block 1056)	0
170898522023005 (Block 3005)	88
170898522023006 (Block 3006)	307
170898522023007 (Block 3007)	160
170898522023008 (Block 3008)	210
170898522023009 (Block 3009)	259
170898522023010 (Block 3010)	136
170898522023012 (Block 3012)	146
170898522023016 (Block 3016)	169
170898522023018 (Block 3018)	179
170898522023019 (Block 3019)	103
170898522023020 (Block 3020)	138
170898522023021 (Block 3021)	93
170898522023022 (Block 3022)	100
170898522023024 (Block 3024)	54
170898522023025 (Block 3025)	124
170898522023026 (Block 3026)	80
170898522023027 (Block 3027)	0
170898522023028 (Block 3028)	0
170898522023030 (Block 3030)	0
170898522023031 (Block 3031)	0
170898522023032 (Block 3032)	0
170898522023033 (Block 3033)	0
170898522023034 (Block 3034)	699
170898522023035 (Block 3035)	0
170898522023036 (Block 3036)	261
170898522023037 (Block 3037)	0
170898522023038 (Block 3038)	0
170898522023039 (Block 3039)	0
170898522023040 (Block 3040)	0
170898522023043 (Block 3043)	74
170898522023044 (Block 3044)	138
170898522023045 (Block 3045)	46
170898522023046 (Block 3046)	0
170898522023047 (Block 3047)	55
170898522023048 (Block 3048)	100
170898522023049 (Block 3049)	0
170898522023052 (Block 3052)	0
8523	
170898523002043 (Block 2043)	0
170898523002044 (Block 2044)	61
170898523002045 (Block 2045)	3
170898523002046 (Block 2046)	14

1

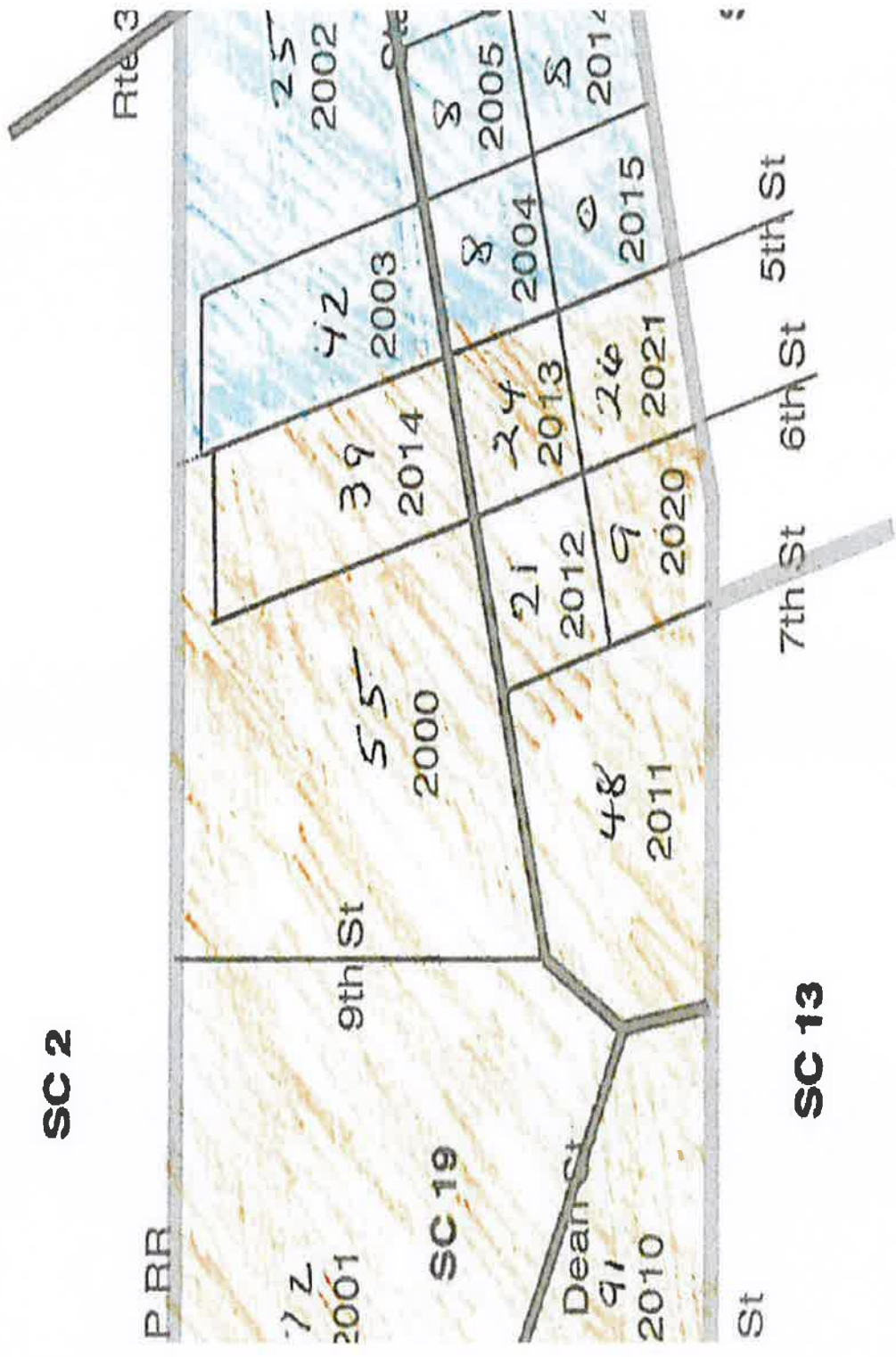
Kane County (Part)

17089852402 (8524.02)

Population

0

0



SC 2

SC 19

SC 13