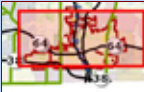
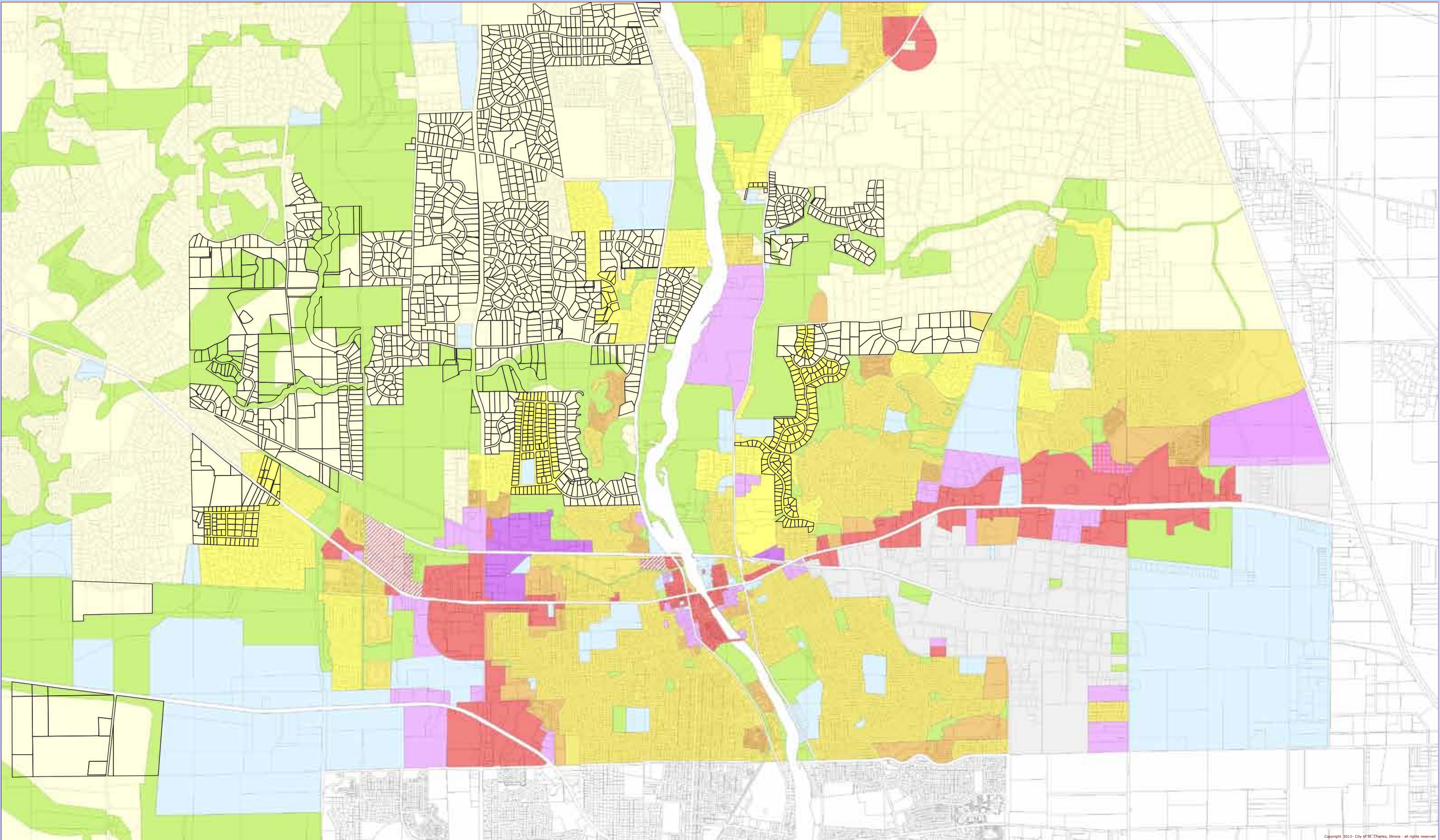




# EXISTING COMPREHENSIVE PLAN/2013 COMPREHENSIVE PLAN • LAND USE COMPARISON



Data Source:  
City of St. Charles, Illinois  
Kane County, Illinois  
DuPage County, Illinois  
Projection: Transverse Mercator  
Coordinate System: Illinois State  
North American Datum 1983  
Printed On: January 25, 2013 10:04



## RURAL SINGLE-FAMILY RESIDENTIAL

PREVIOUS PLAN DESIGNATIONS

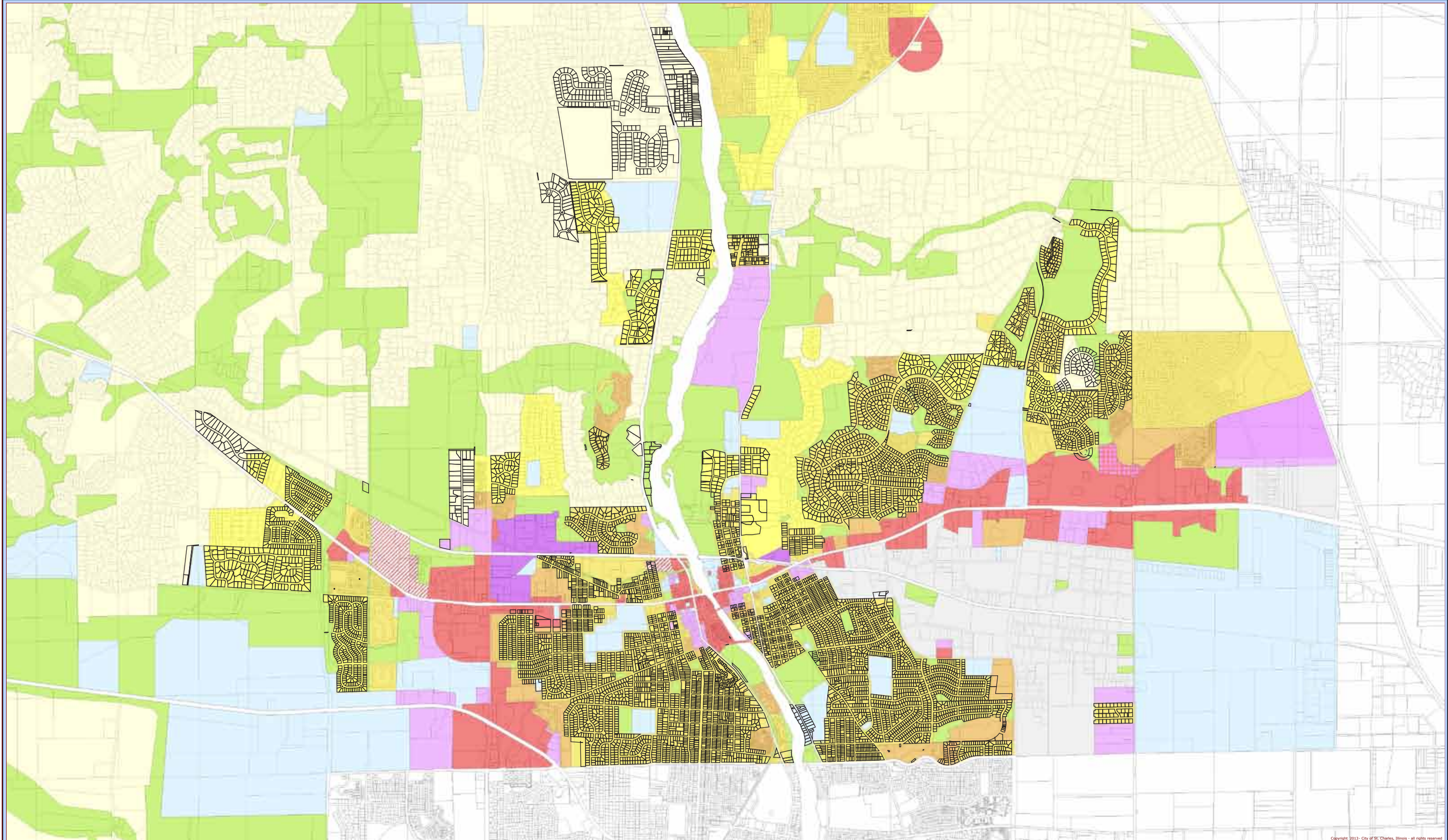
Rural Residential

Copyright 2013 - City of St. Charles, Illinois - all rights reserved  
This work was created for planning purposes only and is provided as is, without warranty of any kind, either expressed or implied. The information represented may contain proprietary and confidential property of the City of St. Charles, Illinois. Under United States Copyright protection laws you may not use, reproduce, or distribute any part of this document without prior written permission. To obtain written permission please contact the City of St. Charles at Two East Main Street, St. Charles, IL 60174.  
Powered by Precision GIS





# EXISTING COMPREHENSIVE PLAN/2013 COMPREHENSIVE PLAN • LAND USE COMPARISON



Data Source:  
City of St. Charles, Illinois  
Kane County, Illinois  
DuPage County, Illinois  
Projection: Transverse Mercator  
Coordinate System: Illinois State  
North American Datum 1983  
Printed On: January 25, 2013 10:04



## SINGLE-FAMILY DETACHED

PREVIOUS PLAN DESIGNATIONS

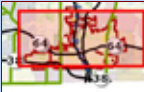
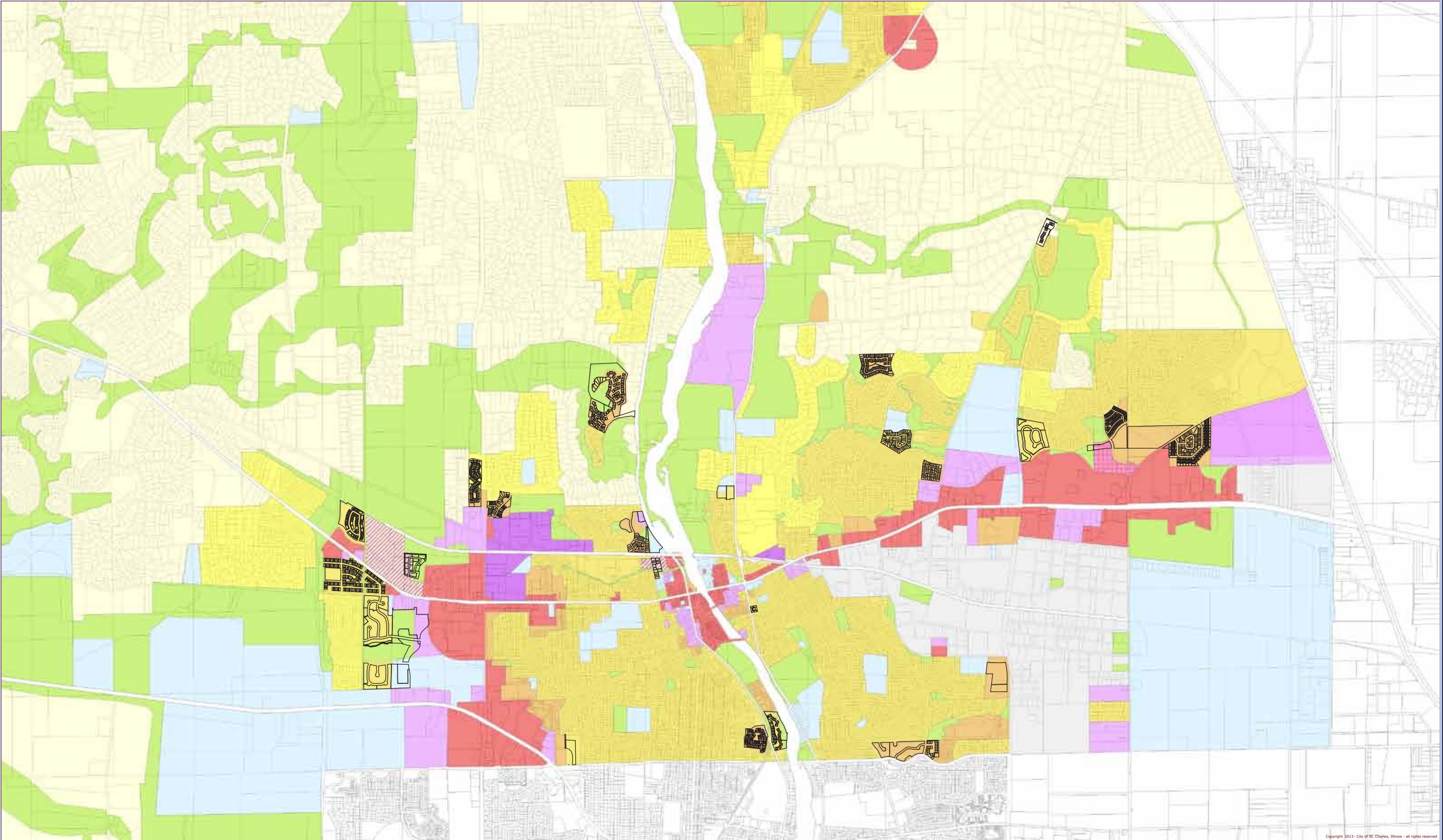
- Low Residential
- Medium Residential

Copyright 2013 - City of St. Charles, Illinois - all rights reserved  
This work was created for planning purposes only and is provided as is, without warranty of any kind, either expressed or implied. The information represented may contain proprietary and confidential property of the City of St. Charles, Illinois. Under United States Copyright protection laws you may not use, reproduce, or distribute any part of this document without prior written permission. To obtain written permission please contact the City of St. Charles at Two East Main Street, St. Charles, IL 60174.  
Powered by Precision GIS





# EXISTING COMPREHENSIVE PLAN/2013 COMPREHENSIVE PLAN • LAND USE COMPARISON



Data Source:  
City of St. Charles, Illinois  
Kane County, Illinois  
DuPage County, Illinois  
Projection: Transverse Mercator  
Coordinate System: Illinois State  
North American Datum 1983  
Printed On: January 25, 2013 10:04



## SINGLE-FAMILY ATTACHED

PREVIOUS PLAN DESIGNATIONS

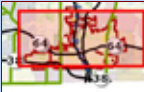
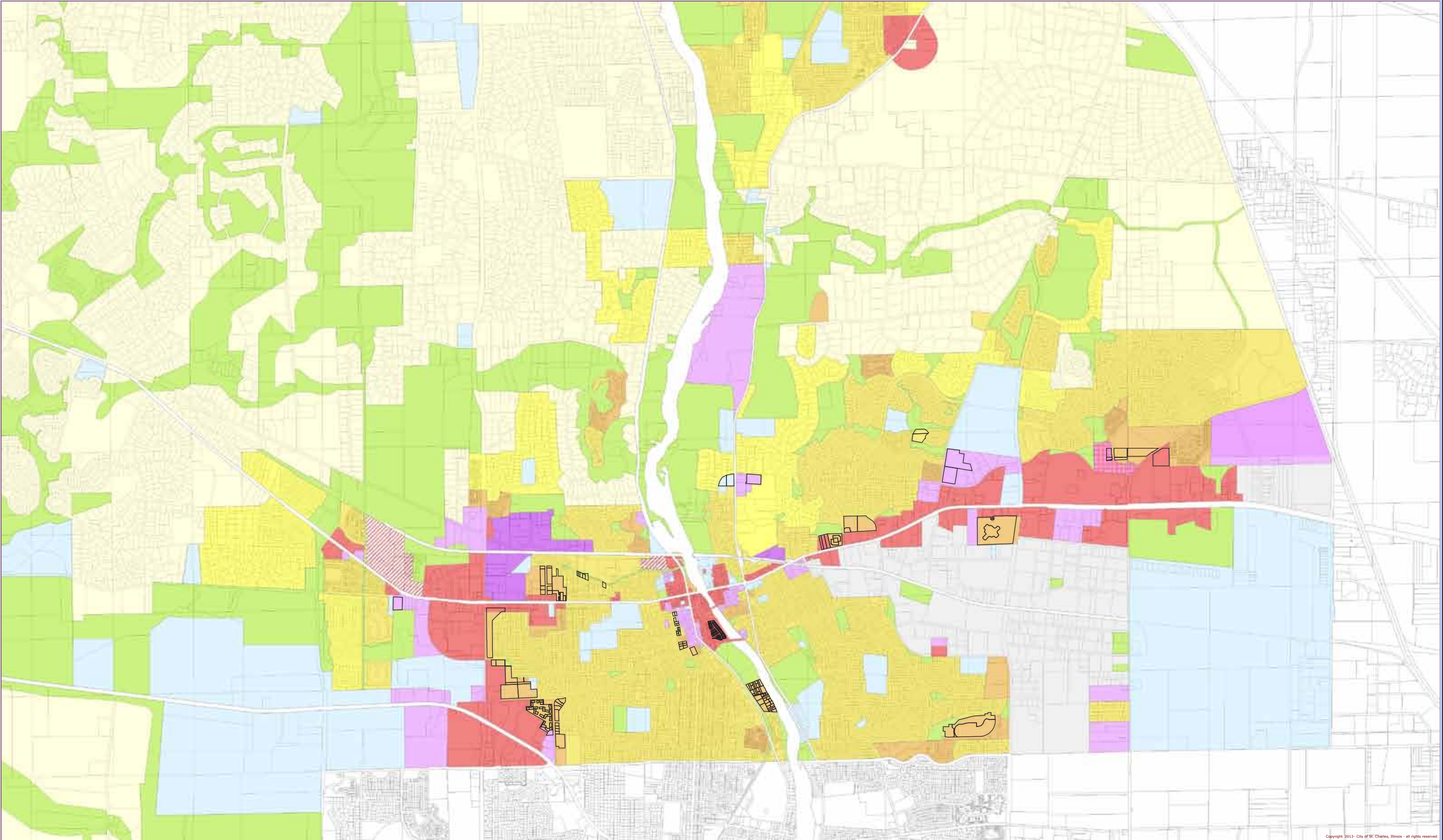
- Medium Residential
- Urban Residential

This work was created for planning purposes only and is provided as is, without warranty of any kind, either expressed or implied. The information represented may contain proprietary and confidential property of the City of St. Charles, Illinois. Under United States Copyright protection laws you may not use, reproduce, or distribute any part of this document without prior written permission. To obtain written permission please contact the City of St. Charles at Two East Main Street, St. Charles, IL 60174.  
Powered by Precision GIS





# EXISTING COMPREHENSIVE PLAN/2013 COMPREHENSIVE PLAN • LAND USE COMPARISON



Data Source:  
City of St. Charles, Illinois  
Kane County, Illinois  
DuPage County, Illinois  
Projection: Transverse Mercator  
Coordinate System: Illinois State  
North American Datum 1983  
Printed On: January 25, 2013 10:04



## MULTI-FAMILY RESIDENTIAL

PREVIOUS PLAN DESIGNATIONS

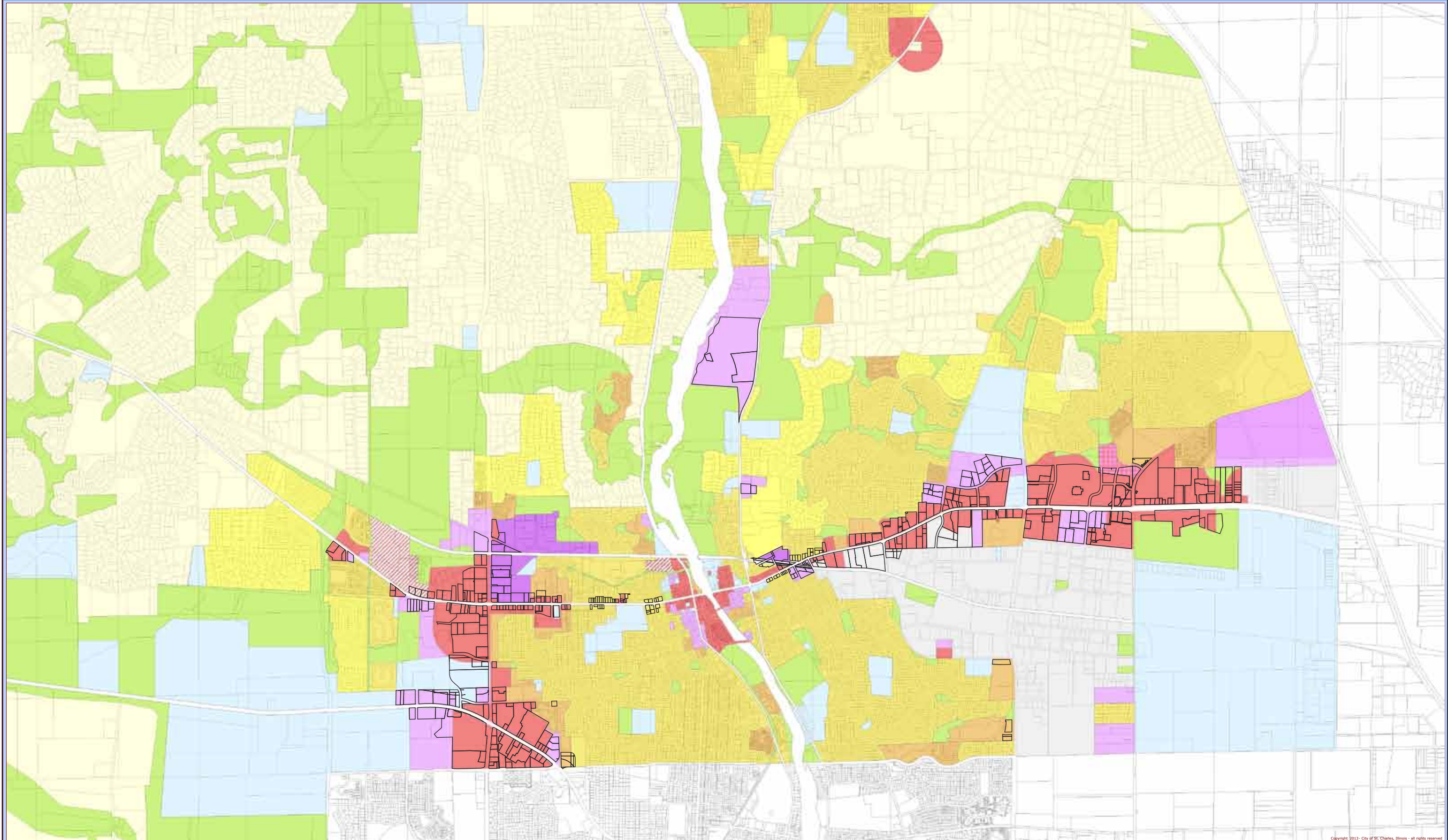
Urban Residential

This work was created for planning purposes only and is provided as is, without warranty of any kind, either expressed or implied. The information represented may contain proprietary and confidential property of the City of St. Charles, Illinois. Under United States Copyright protection laws you may not use, reproduce, or distribute any part of this document without prior written permission. To obtain written permission please contact the City of St. Charles at Two East Main Street, St. Charles, IL 60174. Powered by Precision GIS





# EXISTING COMPREHENSIVE PLAN/2013 COMPREHENSIVE PLAN • LAND USE COMPARISON



Data Source:  
City of St. Charles, Illinois  
Kane County, Illinois  
DuPage County, Illinois  
Projection: Transverse Mercator  
Coordinate System: Illinois State  
North American Datum 1983  
Printed On: January 25, 2013 10:04



## NEIGHBORHOOD & CORRIDOR COM.

PREVIOUS PLAN DESIGNATIONS

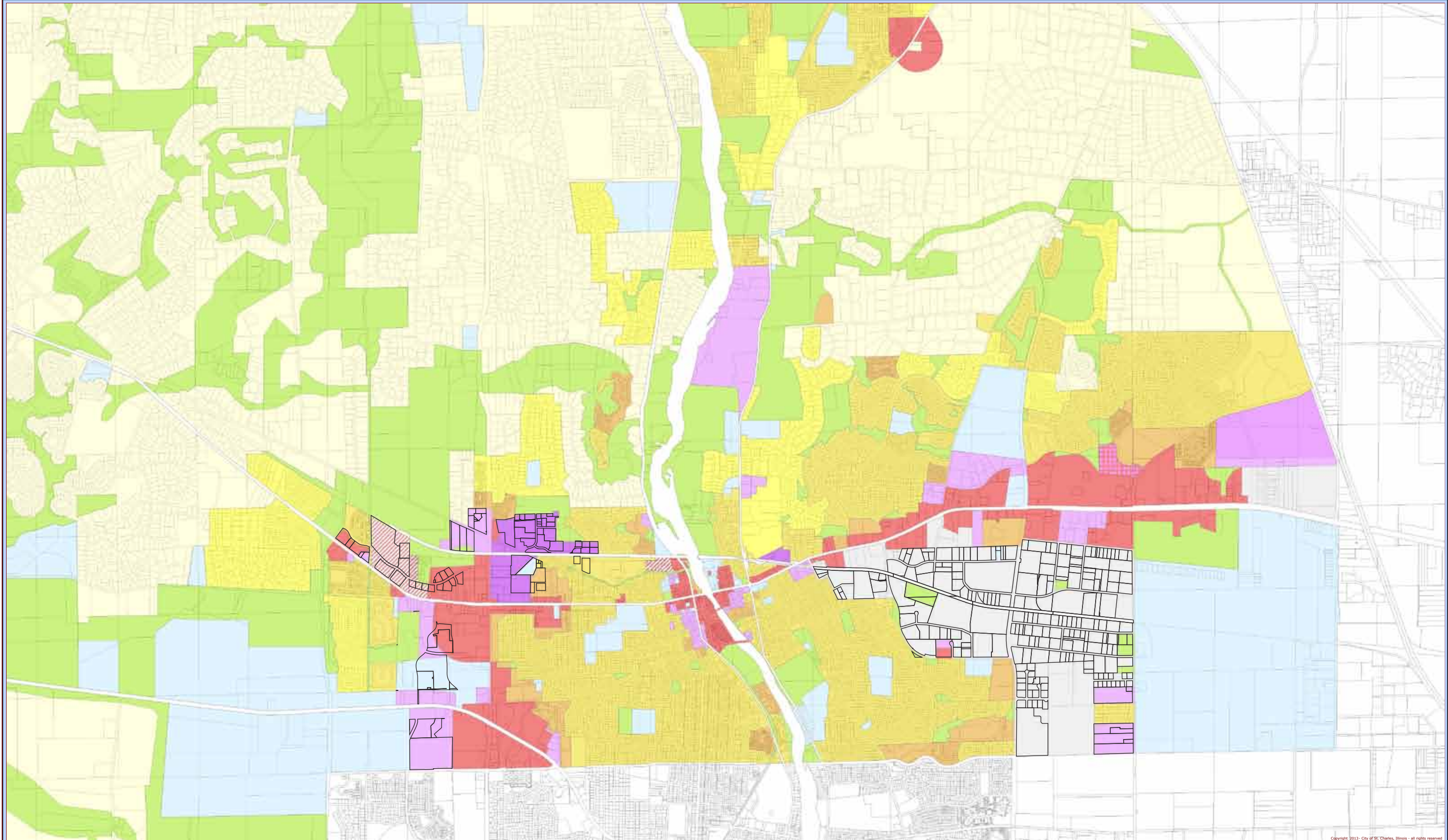
Retail and Service

Copyright 2013 - City of St. Charles, Illinois - all rights reserved  
This work was created for planning purposes only and is provided as is, without warranty of any kind, either expressed or implied. The information represented may contain proprietary and confidential property of the City of St. Charles, Illinois. Under United States Copyright protection laws you may not use, reproduce, or distribute any part of this document without prior written permission. To obtain written permission please contact the City of St. Charles at Two East Main Street, St. Charles, IL 60174.  
Powered by Precision GIS





# EXISTING COMPREHENSIVE PLAN/2013 COMPREHENSIVE PLAN • LAND USE COMPARISON



Data Source:  
City of St. Charles, Illinois  
Kane County, Illinois  
DuPage County, Illinois  
Projection: Transverse Mercator  
Coordinate System: Illinois State  
North American Datum 1983  
Printed On: January 25, 2013 10:04



## INDUSTRIAL/BUSINESS PARK

PREVIOUS PLAN DESIGNATIONS

- Manufacturing
- Special Manufacturing
- Office & Research

This work was created for planning purposes only and is provided as is, without warranty of any kind, either expressed or implied. The information represented may contain proprietary and confidential property of the City of St. Charles, Illinois. Under United States Copyright protection laws you may not use, reproduce, or distribute any part of this document without prior written permission. To obtain written permission please contact the City of St. Charles at Two East Main Street, St. Charles, IL 60174. Powered by Precision GIS