		<b>HISTORIC PRESERVATION COMMISSION AGENDA ITEM EXECUTIVE SUMMARY</b>			
		<b>Agenda Item Title/Address:</b>		COA: 200 W. Main Street	
		<b>Proposal:</b>		North and south walls signs	
		<b>Petitioner:</b>		Brice Soltys	
		<b>Please check appropriate box (x)</b>			
		<b>PUBLIC HEARING</b>		<b>MEETING 2/6/13</b>	<b>X</b>
<b>AGENDA ITEM CATEGORY:</b>					
<input checked="" type="checkbox"/>	Certificate of Appropriateness (COA)			Façade Improvement Plan	
	Preliminary Review			Landmark/District Designation	
	Discussion Item			Commission Business	
<b>ATTACHMENTS:</b>					
Photo illustrations of proposed signs					
Photos of the building					
<b>EXECUTIVE SUMMARY:</b>					
<p>The following changes are proposed to the signage for 200 W. Main Street:</p> <p>On the south elevation facing Main Street, the existing lettering for “Foote Meyers Mielke Flowers” will be removed. The replacement sign will be satin brass letters mounted on a bronze colored aluminum panel reading “Meyers &amp; Flowers Trial Attorneys.” The existing gooseneck lighting for the sign will not be changed.</p> <p>On the north elevation, a new sign will be placed above the third floor windows reading “Meyers &amp; Flowers Trial Attorneys”. The lettering will be dark bronze aluminum mounted directly to the building. An LED lighting panel is proposed to be installed above the lettering.</p> <p>The sign on the east elevation facing Rt. 31 for “Foote Meyers Mielke Flowers” will be removed and not replaced.</p>					
<b>RECOMMENDATION / SUGGESTED ACTION:</b>					
Provide feedback and recommendations for approval of the COA.					

# signpalace.com

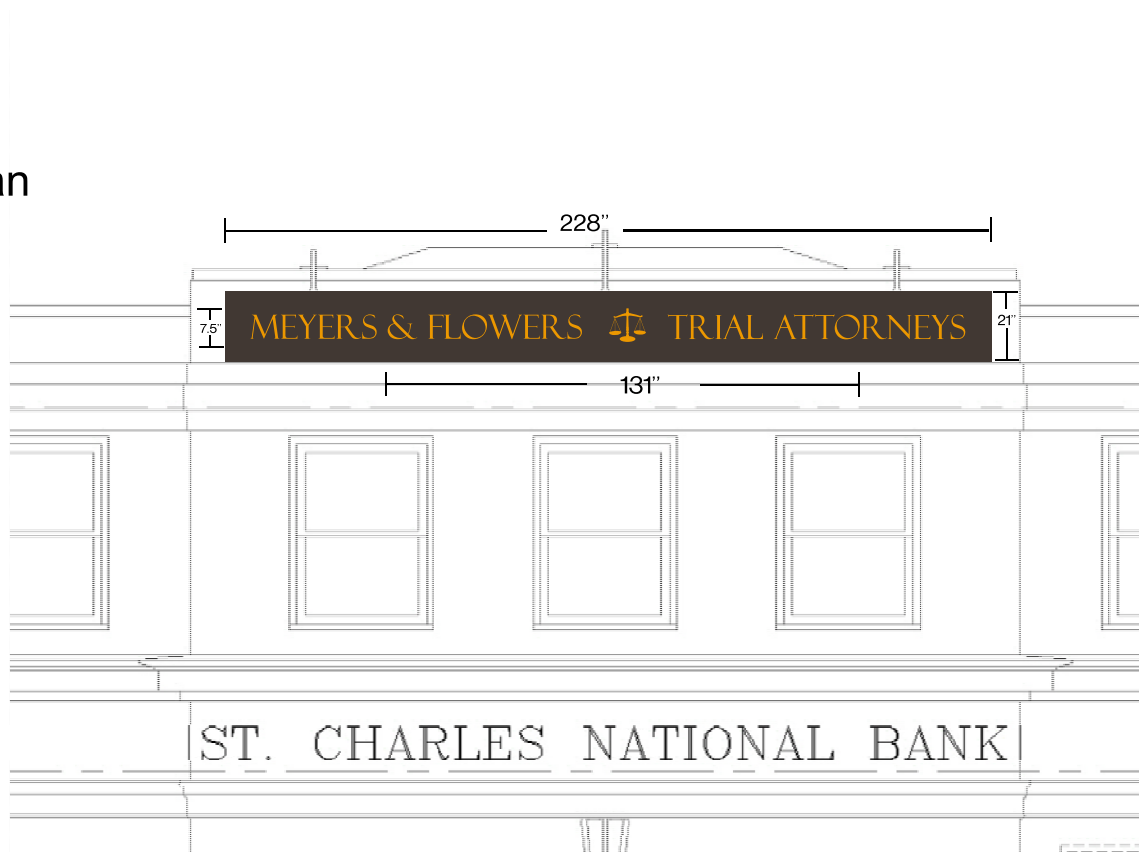
## option B

## JOB PROOF

CLIENT: Meyers and Flowers  
 FILE NAME: EXTERIOR SIGNS.plt  
 DATE: 1/7/13  
 REVISION: 01

Qty: 1 set  
 1/4" Satin brass letters  
 with 1/4" spacers  
 Pin mounted to aluminum pan  
 Size: 7.5" t x 212" w

Qty: 1  
 Bent aluminum pan sign  
 Painted architectural bronze  
 size: 21" x 228"



SOUTH SIDE ELEVATION

Customer: Please check for accuracy in design and spelling. The signage will be produced from design that you see. Some products are subject to final manufacturer and may vary from this proof. We make every effort to eliminate errors, but the customer has final responsibility of final review for correctness. Errors that require additional production and/or reprinting may be at customer's expense.

68 North Lively Boulevard Elk Grove Village, IL 60007

847.640.1335

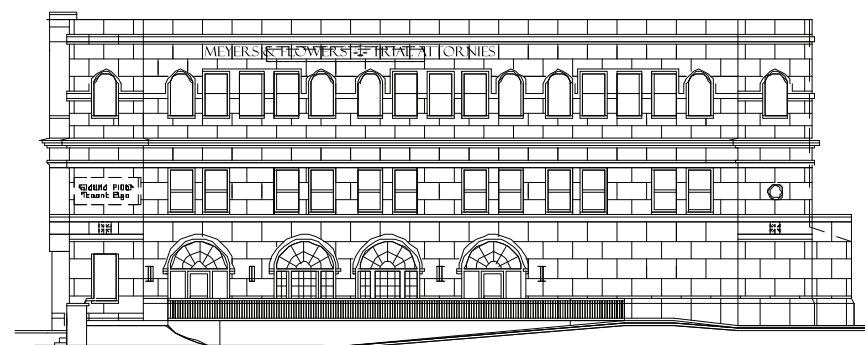
fax 847.640.1343

mrsign@signpalace.com

© Copyright 2008 The Sign Palace Inc. This Document is owned by, and the information contained in it is proprietary to, The Sign Palace Inc. By receipt hereof the holder agrees not to use the information, disclose it to any third party, nor reproduce this document without the prior written consent of The Sign Palace Inc. Holder also agrees to immediately return this document upon request of The Sign Palace Inc.



18" tall letters  
 3/8" flat cut out aluminum letters, 3130 Dark Bronze finish  
 with 1/4" spacers  
 Pin mounted with studs and silicone.



north elevation

**signpalace** inc.  
 design • build • install

68 North Lively Boulevard Elk Grove Village, IL 60007

CLIENT: Name  
 DATE: 00/00/00  
 REVISION: 00  
 FILE NAME: 00

Your Signature Authorizes Sign Palace Inc. to manufacture items as show above.

X \_\_\_\_\_ Date  
 Customer Approval  
 X \_\_\_\_\_ Date  
 Landlord Approval

**ARTWORK CHARGE INCLUDES 1 DRAWING AND 1 REVISION. Any subsequent revisions will be billed at \$75/hour.**

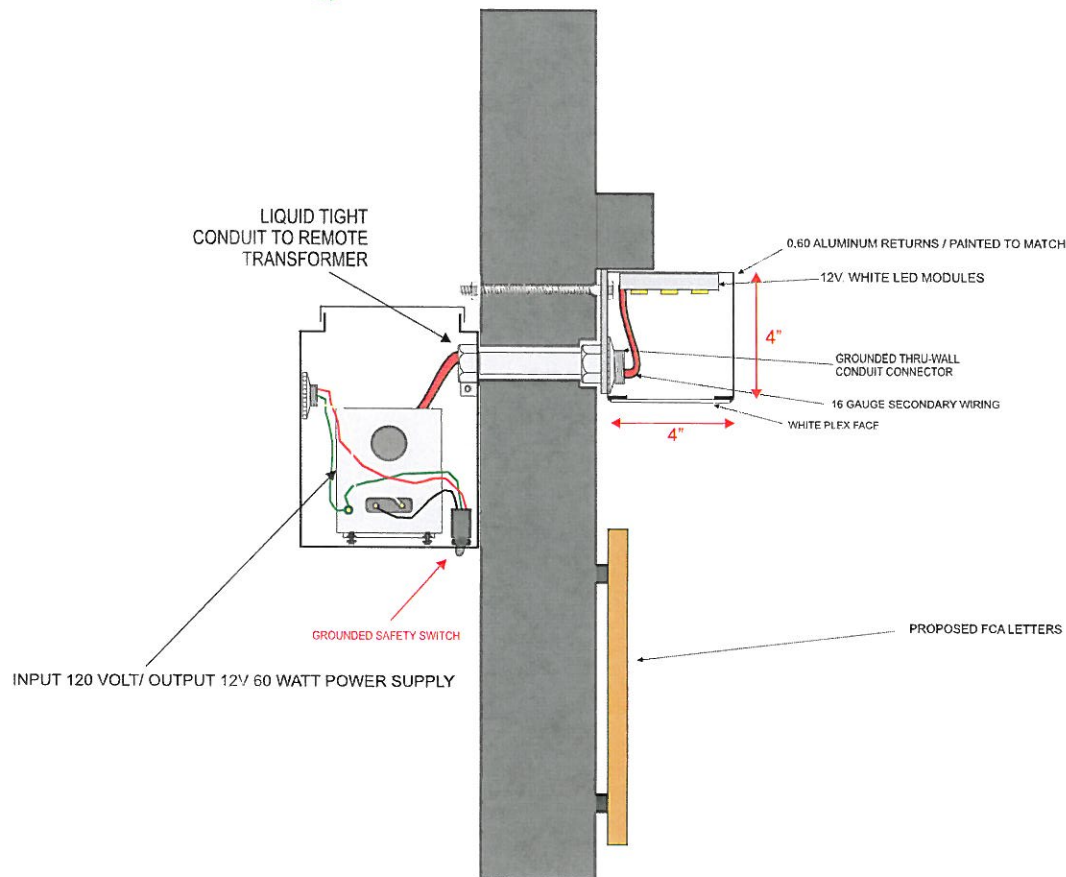
**Customer:** Please check for accuracy in design and spelling. The signage will be produced from design that you see. Some products are subject to final manufacturer and may vary from this proof. We make every effort to eliminate errors, but the customer has final responsibility of final review for correctness. Errors that require additional production and/or reprinting may be at customer's expense.

mrsign@signpalace.com  
 fax 847.640.1343  
 phone 847.640.1335

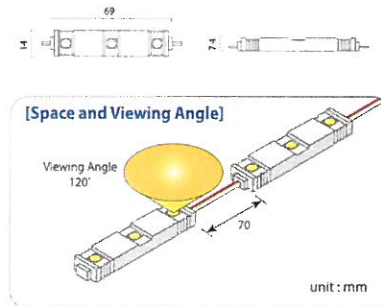
**JOB PROOF**  
 signpalace.com

# Typical U.L. Channel Letter Set Mounted on Raceway

## LED ILLUMINATION



Product No.	G00 3 LED			
Color	W	R	G	B
Operation Voltage	DC 12V			
Current Dissipation	0.06A		0.04A	
Power Dissipation	0.72W		0.48W	
Viewing Angle	120°			
Luminous Intensity(cd)	21,000mcd	2,100mcd	4,200mcd	900mcd
Luminous Flux(lm)	63lm	6.6lm	13.5lm	3.3lm
Working Temperature	-20~70°C			
Waterproofing	IP67			
Dimension	69L x 14W x 7.4H mm			
Weight	11.6g			



Customer: 200 W. MAIN ST. ST. CHARLES, IL

Drawing #

Location:

Date :

Scale 1/4" = 1'ft Approved by :

[pglsign@comcast.net](mailto:pglsign@comcast.net)

All sign designs and concepts shown here on drawing are confidential and are the property of PGL Signs and Service Inc. They are not to be distributed, exhibited or copied without our written authorized permission.



TEL. 847-298-5133 FAX. 847-298-5134 461 N. MT.PROSPECT RD. DES PLAINES, IL 60016

South Elevation



North Elevation

