



AGENDA ITEM EXECUTIVE SUMMARY

Title:	EAB Control Efforts – Information Only
Presenter:	

Please check appropriate box:

	Government Operations	X	Government Services 02.25.13
	Planning & Development		City Council
	Public Hearing		

Estimated Cost:		Budgeted:	YES		NO	
-----------------	--	-----------	-----	--	----	--

If NO, please explain how item will be funded:

Executive Summary:

This is a monthly update on EAB activities for February 2013. This update provides detailed information about the EAB infestation including EAB confirmation status and ash trees proposed to be removed beginning in the month of March, 2013.

Attachments: *(please list)*

Summary Sheet

Recommendation / Suggested Action *(briefly explain):*

For information only.

<i>For office use only:</i>	<i>Agenda Item Number: 3.b</i>
-----------------------------	--------------------------------

Emerald Ash Borer Monthly Summary Sheet

February 2013

The Emerald Ash Borer Monthly Summary Sheet is prepared each month by the Public Services Staff for each Government Services Meeting. This summary documents the Spread of EAB (Confirmed Trees), Control Measures (Removed & Treated Trees) and Planting Efforts (New Trees). Unless noted otherwise, all data listed below reflects One (1) month starting on the 1st and ending on the last day of each month. EAB Maps and an address list of Proposed Removals will be attached to this report.

Confirmed Trees

- As of June 1, 2012, all Ash trees in the City of St. Charles have been reviewed for EAB. Initially, 1,000 trees were confirmed with EAB in phase one of the current EAB program and have been removed as of the end of 2012. The second round of 1,000 trees have already been confirmed and identified for phase two of the program.

Proposed Tree Removals

- We are proposing to remove **179** Ash Trees starting in the month of March, 2013, including:
 1. 42 in the NW Quadrant
 2. 0 in the SW Quadrant
 3. 66 in the NE Quadrant
 4. 71 in the SE Quadrant
 5. 0 in the FW Quadrant

Treating & Planting Notes

- We are already organizing for the planting of over 700 tree replacements in the spring. Planting will begin in April, weather permitting.

Additional Comments

None

Summary Report
EAB Confirmed Sites February 25, 2013

Quadrant	Address	Suffix	Street	Side	Site	DBH	Condition	Maintenance	Species
Total February EAB Confirmations:									
								0	
Breakdown of Confirmations by Quadrant									
							NE:	0	
							SE:	0	
							NW:	0	
							SW:	0	
							FW:	0	

Summary Report

EAB Proposed Removals February 25, 2013

Quadrant	Address	Suffix	Street	Side	Site	DBH	Condition	Maintenance	Species	Notes
NE	703		Crossing Way	Front	2	6	EAB	Proposed Removal-NE	Ash Cimmarron	YR2 022513GSC
NE	707		Crossing Way	Front	1	8	EAB	Proposed Removal-NE	Ash Rosehill White	YR2 022513GSC
NE	713		Crossing Way	Front	1	10	EAB	Proposed Removal-NE	Ash Rosehill White	YR2 022513GSC
NE	731		Crossing Way	Front	1	7	EAB	Proposed Removal-NE	Ash Cimmarron	YR2 022513GSC
NE	803		Crossing Way	Front	1	7	EAB	Proposed Removal-NE	Ash Cimmarron	YR2 022513GSC
NE	804		Crossing Way	Side	2	7	EAB	Proposed Removal-NE	Ash Autumn Purple	YR2 022513GSC
NE	811		Crossing Way	Front	1	8	EAB	Proposed Removal-NE	Ash Autumn Purple	YR2 022513GSC
NE	814		Crossing Way	Front	1	5	EAB	Proposed Removal-NE	Ash Cimmarron	YR2 022513GSC
NE	818		Crossing Way	Front	1	7	EAB	Proposed Removal-NE	Ash Autumn Purple	YR2 022513GSC
NE	820		Crossing Way	Front	1	7	EAB	Proposed Removal-NE	Ash Autumn Purple	YR2 022513GSC
NE	825		Crossing Way	Front	1	7	EAB	Proposed Removal-NE	Ash Autumn Purple	YR2 022513GSC
NE	3691		E. Main St.	Front	1	15	EAB	Proposed Removal-NE	Ash Cimmarron	YR2 022513GSC
NE	3691		E. Main St.	Front	2	15	EAB	Proposed Removal-NE	Ash Cimmarron	YR2 022513GSC
NE	3691		E. Main St.	Front	3	15	EAB	Proposed Removal-NE	Ash Cimmarron	YR2 022513GSC
NE	3691		E. Main St.	Front	4	15	EAB	Proposed Removal-NE	Ash Cimmarron	YR2 022513GSC
NE	3691		E. Main St.	Front	5	15	EAB	Proposed Removal-NE	Ash Cimmarron	YR2 022513GSC
NE	3691		E. Main St.	Front	6	15	EAB	Proposed Removal-NE	Ash Cimmarron	YR2 022513GSC
NE	3691		E. Main St.	Front	7	15	EAB	Proposed Removal-NE	Ash Cimmarron	YR2 022513GSC
NE	902		Fox Chase Cir	Front	1	12	EAB	Proposed Removal-NE	Ash Cimmarron	YR3
NE	902		Fox Chase Cir	Front	2	13	EAB	Proposed Removal-NE	Ash Cimmarron	YR3
NE	902		Fox Chase Cir	Front	3	10	EAB	Proposed Removal-NE	Ash Cimmarron	YR3
NE	902		Fox Chase Cir	Side	2	13	EAB	Proposed Removal-NE	Ash Rosehill White	YR2 022513GSC
NE	902		Fox Chase Cir	Side	3	12	EAB	Proposed Removal-NE	Ash Cimmarron	YR2 022513GSC
NE	902		Fox Chase Cir	Side	4	12	EAB	Proposed Removal-NE	Ash Rosehill White	YR2 022513GSC
NE	902		Fox Chase Cir	Side	5	13	EAB	Proposed Removal-NE	Ash Cimmarron	YR2 022513GSC
NE	903		Fox Chase Cir	Front	1	11	EAB	Proposed Removal-NE	Ash Rosehill White	YR2 022513GSC
NE	904		Fox Chase Cir	Front	1	8	EAB	Proposed Removal-NE	Ash Rosehill White	YR2 022513GSC
NE	905		Fox Chase Cir	Front	1	14	EAB	Proposed Removal-NE	Ash Cimmarron	YR2 022513GSC
NE	905	X	Fox Chase Cir	Median	1	10	EAB	Proposed Removal-NE	Ash Cimmarron	YR2 022513GSC
NE	905	X	Fox Chase Cir	Median	2	12	EAB	Proposed Removal-NE	Ash Cimmarron	YR2 022513GSC
NE	905	X	Fox Chase Cir	Median	3	11	EAB	Proposed Removal-NE	Ash Cimmarron	YR2 022513GSC
NE	721		Fox Glen Dr	Front	2	12	EAB	Proposed Removal-NE	Ash Rosehill White	YR2 022513GSC

Summary Report

EAB Proposed Removals February 25, 2013

Quadrant	Address	Suffix	Street	Side	Site	DBH	Condition	Maintenance	Species	Notes
NE	721		Fox Glen Dr	Front	3	13	EAB	Proposed Removal-NE	Ash Rosehill White	YR2 022513GSC
NE	721		Fox Glen Dr	Front	4	12	EAB	Proposed Removal-NE	Ash Rosehill White	YR2 022513GSC
NE	1021		Fox Glen Dr	Side	5	12	EAB	Proposed Removal-NE	Ash Summit	YR2 022513GSC
NE	1101		Fox Glen Dr	Side	3	12	EAB	Proposed Removal-NE	Ash Cimmarron	YR2 022513GSC
NE	3209		Fox Hunt Ln	Front	1	13	EAB	Proposed Removal-NE	Ash Cimmarron	YR2 022513GSC
NE	3021		Glen Eagles Ct	Front	1	12	EAB	Proposed Removal-NE	Ash Cimmarron	YR2 022513GSC
NE	3021		Glen Eagles Ct	Side	1	14	EAB	Proposed Removal-NE	Ash Rosehill White	YR2 022513GSC
NE	3021		Glen Eagles Ct	Side	2	12	EAB	Proposed Removal-NE	Ash Cimmarron	YR2 022513GSC
NE	2910		Glenbriar Dr	Front	1	10	EAB	Proposed Removal-NE	Ash Cimmarron	YR2 022513GSC
NE	2910		Glenbriar Dr	Front	5	10	EAB	Proposed Removal-NE	Ash Cimmarron	YR2 022513GSC
NE	3410	X	Majestic Oaks Dr	Front	14	8	EAB	Proposed Removal-NE	Ash Cimmarron	YR2 022513GSC
NE	3410	X	Majestic Oaks Dr	Front	15	8	EAB	Proposed Removal-NE	Ash Cimmarron	YR2 022513GSC
NE	3410	X	Majestic Oaks Dr	Front	16	8	EAB	Proposed Removal-NE	Ash Cimmarron	YR2 022513GSC
NE	735		Persimmon Dr	Front	1	14	EAB	Proposed Removal-NE	Ash Cimmarron	YR2 022513GSC
NE	4107		Royal Troon Ct	Front	1	12	EAB	Proposed Removal-NE	Ash Cimmarron	YR2 022513GSC
NE	4111		Royal Troon Ct	Front	2	13	EAB	Proposed Removal-NE	Ash Cimmarron	YR2 022513GSC
NE	4113		Royal Troon Ct	Front	1	10	EAB	Proposed Removal-NE	Ash Cimmarron	YR2 022513GSC
NE	4113		Royal Troon Ct	Front	2	12	EAB	Proposed Removal-NE	Ash Cimmarron	YR2 022513GSC
NE	4113		Royal Troon Ct	Front	4	13	EAB	Proposed Removal-NE	Ash Cimmarron	YR2 022513GSC
NE	4125		Royal Troon Ct	Front	1	12	EAB	Proposed Removal-NE	Ash Cimmarron	YR2 022513GSC
NE	4125		Royal Troon Ct	Front	2	13	EAB	Proposed Removal-NE	Ash Cimmarron	YR2 022513GSC
NE	4125		Royal Troon Ct	Front	3	12	EAB	Proposed Removal-NE	Ash Cimmarron	YR2 022513GSC
NE	703		Stuarts Dr	Side	1	6	EAB	Proposed Removal-NE	Ash Autumn Purple	YR2 022513GSC
NE	704		Stuarts Dr	Side	4	12	EAB	Proposed Removal-NE	Ash Rosehill White	YR2 022513GSC
NE	729		Stuarts Dr	Front	1	5	EAB	Proposed Removal-NE	Ash Rosehill White	YR2 022513GSC
NE	823		Stuarts Dr	Front	1	8	EAB	Proposed Removal-NE	Ash Autumn Purple	YR2 022513GSC
NE	824		Stuarts Dr	Front	1	8	EAB	Proposed Removal-NE	Ash Rosehill White	YR2 022513GSC
NE	826		Stuarts Dr	Front	1	8	EAB	Proposed Removal-NE	Ash Rosehill White	YR2 022513GSC
NE	829		Stuarts Dr	Front	1	8	EAB	Proposed Removal-NE	Ash Autumn Purple	YR2 022513GSC
NE	830		Stuarts Dr	Front	1	7	EAB	Proposed Removal-NE	Ash Cimmarron	YR2 022513GSC
NE	833		Stuarts Dr	Front	2	8	EAB	Proposed Removal-NE	Ash Windy City White	YR2 022513GSC
NE	836		Stuarts Dr	Front	1	6	EAB	Proposed Removal-NE	Ash Cimmarron	YR2 022513GSC

Summary Report
EAB Proposed Removals February 25, 2013

Quadrant	Address	Suffix	Street	Side	Site	DBH	Condition	Maintenance	Species	Notes
NE	837		Stuarts Dr	Front	1	8	EAB	Proposed Removal-NE	Ash Windy City White	YR2 022513GSC
NE	839		Stuarts Dr	Front	1	6	EAB	Proposed Removal-NE	Ash Marshall Seedless	YR2 022513GSC
NW	201		Millington Way	Front	1	16	EAB	Proposed Removal-NW	Ash Cinnaron	YR2 022513GSC
NW	202		Millington Way	Front	1	16	EAB	Proposed Removal-NW	Ash Cinnaron	YR2 022513GSC
NW	202		Millington Way	Front	2	21	EAB	Proposed Removal-NW	Ash Cinnaron	YR2 022513GSC
NW	306		Millington Way	Front	2	14	EAB	Proposed Removal-NW	Ash Cinnaron	YR2 022513GSC
NW	309		Millington Way	Front	1	16	EAB	Proposed Removal-NW	Ash Cinnaron	YR2 022513GSC
NW	310		Millington Way	Front	1	14	EAB	Proposed Removal-NW	Ash Cinnaron	YR2 022513GSC
NW	401		Millington Way	Front	1	15	EAB	Proposed Removal-NW	Ash Cinnaron	YR2 022513GSC
NW	402		Millington Way	Front	1	15	EAB	Proposed Removal-NW	Ash Cinnaron	YR2 022513GSC
NW	402		Millington Way	Front	2	15	EAB	Proposed Removal-NW	Ash Cinnaron	YR2 022513GSC
NW	405		Millington Way	Front	1	15	EAB	Proposed Removal-NW	Ash Cinnaron	YR2 022513GSC
NW	606		Millington Way	Front	2	16	EAB	Proposed Removal-NW	Ash Cinnaron	YR2 022513GSC
NW	702		Millington Way	Front	1	19	EAB	Proposed Removal-NW	Ash Cinnaron	YR2 022513GSC
NW	1102		Millington Way	Front	2	15	EAB	Proposed Removal-NW	Ash Cinnaron	YR2 022513GSC
NW	1102		Millington Way	Side	1	15	EAB	Proposed Removal-NW	Ash Cinnaron	YR2 022513GSC
NW	713		Redden Ct	Front	1	9	EAB	Proposed Removal-NW	Ash Autumn Purple	YR2 022513GSC // re
NW	235		Sedgewick Cir	Front	1	9	EAB	Proposed Removal-NW	Ash Cinnaron	YR2 022513GSC
NW	250		Sedgewick Cir	Front	1	16	EAB	Proposed Removal-NW	Ash Cinnaron	YR2 022513GSC
NW	606		Timbers Ct.	Front	2	16	EAB	Proposed Removal-NW	Ash Cinnaron	YR2 022513GSC
NW	618		Timbers Ct.	Front	1	17	EAB	Proposed Removal-NW	Ash Cinnaron	YR2 022513GSC
NW	622		Timbers Ct.	Front	2	21	EAB	Proposed Removal-NW	Ash Cinnaron	YR2 022513GSC
NW	622		Timbers Ct.	Side	1	14	EAB	Proposed Removal-NW	Ash Cinnaron	YR2 022513GSC
NW	622		Timbers Ct.	Side	2	18	EAB	Proposed Removal-NW	Ash Cinnaron	YR2 022513GSC
NW	205		Timbers Trail	Front	1	13	EAB	Proposed Removal-NW	Ash Cinnaron	YR2 022513GSC
NW	206		Timbers Trail	Front	3	15	EAB	Proposed Removal-NW	Ash Cinnaron	YR2 022513GSC
NW	306		Timbers Trail	Front	1	16	EAB	Proposed Removal-NW	Ash Blue	YR2 022513GSC
NW	306		Timbers Trail	Front	2	13	EAB	Proposed Removal-NW	Ash Rosehill White	YR2 022513GSC
NW	310		Timbers Trail	Front	1	16	EAB	Proposed Removal-NW	Ash Cinnaron	YR2 022513GSC
NW	310		Timbers Trail	Front	2	18	EAB	Proposed Removal-NW	Ash Cinnaron	YR2 022513GSC
NW	311		Timbers Trail	Front	1	18	EAB	Proposed Removal-NW	Ash Cinnaron	YR2 022513GSC
NW	311		Timbers Trail	Front	2	21	EAB	Proposed Removal-NW	Ash Blue	YR2 022513GSC

Summary Report
EAB Proposed Removals February 25, 2013

Quadrant	Address	Suffix	Street	Side	Site	DBH	Condition	Maintenance	Species	Notes
NW	503		Timbers Trail	Front	1	16	EAB	Proposed Removal-NW	Ash Cimmarron	YR2 022513GSC
NW	506		Timbers Trail	Front	3	11	EAB	Proposed Removal-NW	Ash Cimmarron	YR2 022513GSC
NW	515		Timbers Trail	Front	1	13	EAB	Proposed Removal-NW	Ash Cimmarron	YR2 022513GSC // DI
NW	415		Timbers Trail Cir	Front	1	13	EAB	Proposed Removal-NW	Ash Cimmarron	YR2 022513GSC // re
NW	415		Timbers Trail Cir	Side	1	15	EAB	Proposed Removal-NW	Ash Cimmarron	YR2 022513GSC // re
NW	415		Timbers Trail Cir	Side	2	11	EAB	Proposed Removal-NW	Ash Cimmarron	YR2 022513GSC // re
NW	415		Timbers Trail Cir	Side	3	11	EAB	Proposed Removal-NW	Ash Cimmarron	YR2 022513GSC // re
NW	402		Timbers Trail Pl	Front	1	13	EAB	Proposed Removal-NW	Ash Cimmarron	YR2 022513GSC
NW	402		Timbers Trail Pl	Front	2	19	EAB	Proposed Removal-NW	Ash Cimmarron	YR2 022513GSC // if
NW	418		Timbers Trail Pl	Front	1	15	EAB	Proposed Removal-NW	Ash Cimmarron	YR2 022513GSC
NW	418		Timbers Trail Pl	Side	1	13	EAB	Proposed Removal-NW	Ash Cimmarron	YR2 022513GSC
NW	418		Timbers Trail Pl	Side	4	7	EAB	Proposed Removal-NW	Ash Cimmarron	YR2 022513GSC
SE	1638		13th Ave /S	Front	1	26	EAB	Proposed Removal-SE	Ash Rosehill White	YR2 022513GSC
SE	1252		Midway Ave	Front	1	16	EAB	Proposed Removal-SE	Ash Cimmarron	YR2 022513GSC
SE	1254		Midway Ave	Front	1	15	EAB	Proposed Removal-SE	Ash Cimmarron	YR2 022513GSC
SE	1344		Midway Ave	Front	1	14	EAB	Proposed Removal-SE	Ash Cimmarron	YR2 022513GSC
SE	1412		Rita Ave	Side	2	11	EAB	Proposed Removal-SE	Ash Cimmarron	YR2 022513GSC
SE	1605		Rita Ave	Front	1	17	EAB	Proposed Removal-SE	Ash Rosehill White	YR2 022513GSC
SE	1605		Rita Ave	Front	2	20	EAB	Proposed Removal-SE	Ash Cimmarron	YR2 022513GSC
SE	1607		Rita Ave	Front	2	18	EAB	Proposed Removal-SE	Ash Cimmarron	YR2 022513GSC
SE	1609		Rita Ave	Front	1	16	EAB	Proposed Removal-SE	Ash Cimmarron	YR2 022513GSC
SE	1610		Rita Ave	Front	1	17	EAB	Proposed Removal-SE	Ash Cimmarron	YR2 022513GSC
SE	1611		Rita Ave	Front	1	12	EAB	Proposed Removal-SE	Ash Cimmarron	YR2 022513GSC
SE	1611		Rita Ave	Front	2	16	EAB	Proposed Removal-SE	Ash Cimmarron	YR2 022513GSC
SE	1701		Rita Ave	Front	1	17	EAB	Proposed Removal-SE	Ash Cimmarron	YR2 022513GSC
SE	1704		Rita Ave	Front	2	13	EAB	Proposed Removal-SE	Ash Cimmarron	YR2 022513GSC
SE	1709		Rita Ave	Front	3	16	EAB	Proposed Removal-SE	Ash Cimmarron	YR2 022513GSC
SE	1710		Rita Ave	Front	2	16	EAB	Proposed Removal-SE	Ash Cimmarron	YR2 022513GSC
SE	1711		Rita Ave	Front	1	17	EAB	Proposed Removal-SE	Ash Cimmarron	YR2 022513GSC
SE	1713		Rita Ave	Front	2	16	EAB	Proposed Removal-SE	Ash Cimmarron	YR2 022513GSC
SE	1802		Rita Ave	Front	2	15	EAB	Proposed Removal-SE	Ash Cimmarron	YR2 022513GSC
SE	1803		Rita Ave	Front	1	13	EAB	Proposed Removal-SE	Ash Cimmarron	YR2 022513GSC

Summary Report
EAB Proposed Removals February 25, 2013

Quadrant	Address	Suffix	Street	Side	Site	DBH	Condition	Maintenance	Species	Notes
SE	1806		Rita Ave	Front	1	11	EAB	Proposed Removal-SE	Ash Cinnmaron	YR2 022513GSC
SE	1807		Rita Ave	Front	2	14	EAB	Proposed Removal-SE	Ash Cinnmaron	YR2 022513GSC
SE	1809		Rita Ave	Front	1	14	EAB	Proposed Removal-SE	Ash Cinnmaron	YR2 022513GSC
SE	1811		Rita Ave	Front	2	15	EAB	Proposed Removal-SE	Ash Cinnmaron	YR2 022513GSC
SE	1813		Rita Ave	Front	1	17	EAB	Proposed Removal-SE	Ash Cinnmaron	YR2 022513GSC
SE	1901		Rita Ave	Front	1	17	EAB	Proposed Removal-SE	Ash Cinnmaron	YR2 022513GSC
SE	1902		Rita Ave	Front	1	14	EAB	Proposed Removal-SE	Ash Cinnmaron	YR2 022513GSC
SE	1903		Rita Ave	Front	2	15	EAB	Proposed Removal-SE	Ash Cinnmaron	YR2 022513GSC
SE	1905		Rita Ave	Front	2	18	EAB	Proposed Removal-SE	Ash Cinnmaron	YR2 022513GSC
SE	1909		Rita Ave	Front	2	15	EAB	Proposed Removal-SE	Ash Cinnmaron	YR2 022513GSC
SE	1910		Rita Ave	Front	3	10	EAB	Proposed Removal-SE	Ash Cinnmaron	YR2 022513GSC
SE	1910		Rita Ave	Side	1	16	EAB	Proposed Removal-SE	Ash Cinnmaron	YR2 022513GSC
SE	1913		Rita Ave	Front	1	14	EAB	Proposed Removal-SE	Ash Cinnmaron	YR2 022513GSC
SE	1401		Walnut Hill Ave	Side	2	12	EAB	Proposed Removal-SE	Ash Cinnmaron	YR2 022513GSC
SE	1401		Walnut Hill Ave	Side	3	10	EAB	Proposed Removal-SE	Ash Cinnmaron	YR2 022513GSC
SE	1401		Walnut Hill Ave	Side	4	13	EAB	Proposed Removal-SE	Ash Cinnmaron	YR2 022513GSC
SE	1402		Walnut Hill Ave	Front	1	13	EAB	Proposed Removal-SE	Ash Rosehill White	YR2 022513GSC
SE	1402		Walnut Hill Ave	Side	1	14	EAB	Proposed Removal-SE	Ash Rosehill White	YR2 022513GSC
SE	1406		Walnut Hill Ave	Front	1	10	EAB	Proposed Removal-SE	Ash Rosehill White	YR2 022513GSC
SE	1410		Walnut Hill Ave	Front	1	12	EAB	Proposed Removal-SE	Ash Rosehill White	YR2 022513GSC
SE	1425		Walnut Hill Ave	Front	1	13	EAB	Proposed Removal-SE	Ash Rosehill White	YR2 022513GSC
SE	1429		Walnut Hill Ave	Front	1	12	EAB	Proposed Removal-SE	Ash Rosehill White	YR2 022513GSC
SE	1430		Walnut Hill Ave	Front	1	10	EAB	Proposed Removal-SE	Ash Rosehill White	YR2 022513GSC
SE	1433		Walnut Hill Ave	Front	1	14	EAB	Proposed Removal-SE	Ash Rosehill White	YR2 022513GSC
SE	1434		Walnut Hill Ave	Front	1	12	EAB	Proposed Removal-SE	Ash Rosehill White	YR2 022513GSC
SE	1436		Walnut Hill Ave	Front	1	13	EAB	Proposed Removal-SE	Ash Rosehill White	YR2 022513GSC
SE	1437		Walnut Hill Ave	Front	2	6	EAB	Proposed Removal-SE	Ash Rosehill White	YR2 022513GSC
SE	1440		Walnut Hill Ave	Front	1	13	EAB	Proposed Removal-SE	Ash Cinnmaron	YR2 022513GSC
SE	1445		Walnut Hill Ave	Front	1	4	EAB	Proposed Removal-SE	Ash Rosehill White	YR2 022513GSC
SE	1446		Walnut Hill Ave	Front	1	13	EAB	Proposed Removal-SE	Ash Cinnmaron	YR2 022513GSC
SE	1449		Walnut Hill Ave	Front	1	13	EAB	Proposed Removal-SE	Ash Rosehill White	YR2 022513GSC
SE	1454		Walnut Hill Ave	Front	1	13	EAB	Proposed Removal-SE	Ash Cinnmaron	YR2 022513GSC

Summary Report
EAB Proposed Removals February 25, 2013

Quadrant	Address	Suffix	Street	Side	Site	DBH	Condition	Maintenance	Species	Notes
SE	1458		Walnut Hill Ave	Front	1	12	EAB	Proposed Removal-SE	Ash Rosehill White	YR2 022513GSC
SE	1468		Walnut Hill Ave	Front	1	6	EAB	Proposed Removal-SE	Ash Cimmarron	YR2 022513GSC
SE	1472		Walnut Hill Ave	Front	1	8	EAB	Proposed Removal-SE	Ash Cimmarron	YR2 022513GSC
SE	1474		Walnut Hill Ave	Front	1	12	EAB	Proposed Removal-SE	Ash Cimmarron	YR2 022513GSC
SE	1483		Walnut Hill Ave	Front	1	13	EAB	Proposed Removal-SE	Ash Cimmarron	YR2 022513GSC
SE	1483		Walnut Hill Ave	Front	2	12	EAB	Proposed Removal-SE	Ash Cimmarron	YR2 022513GSC
SE	1483		Walnut Hill Ave	Front	3	8	EAB	Proposed Removal-SE	Ash Cimmarron	YR2 022513GSC
SE	1486	X	Walnut Hill Ave	Front	1	12	EAB	Proposed Removal-SE	Ash Cimmarron	YR2 022513GSC
SE	1502		Weber Rd	Front	1	14	EAB	Proposed Removal-SE	Ash Cimmarron	YR2 022513GSC
SE	1506		Weber Rd	Front	2	14	EAB	Proposed Removal-SE	Ash Cimmarron	YR2 022513GSC
SE	1502		Williams Ave	Front	1	14	EAB	Proposed Removal-SE	Ash Cimmarron	YR2 022513GSC
SE	1504		Williams Ave	Front	1	18	EAB	Proposed Removal-SE	Ash Cimmarron	YR2 022513GSC
SE	1506		Williams Ave	Front	1	18	EAB	Proposed Removal-SE	Ash Cimmarron	YR2 022513GSC
SE	1506		Williams Ave	Front	2	14	EAB	Proposed Removal-SE	Ash Cimmarron	YR2 022513GSC
SE	1513		Williams Ave	Front	2	17	EAB	Proposed Removal-SE	Ash Cimmarron	YR2 022513GSC
SE	1515		Williams Ave	Front	1	16	EAB	Proposed Removal-SE	Ash Cimmarron	YR2 022513GSC
SE	1519		Williams Ave	Front	2	15	EAB	Proposed Removal-SE	Ash Cimmarron	YR2 022513GSC
SE	1526		Williams Ave	Front	1	15	EAB	Proposed Removal-SE	Ash Cimmarron	YR2 022513GSC
SE	1528		Williams Ave	Front	1	16	EAB	Proposed Removal-SE	Ash Cimmarron	YR2 022513GSC
Total February Approved EAB Removals:								179		
							NE:	66		
							SE:	71		
							NW:	42		
							SW:	0		
							FW:	0		

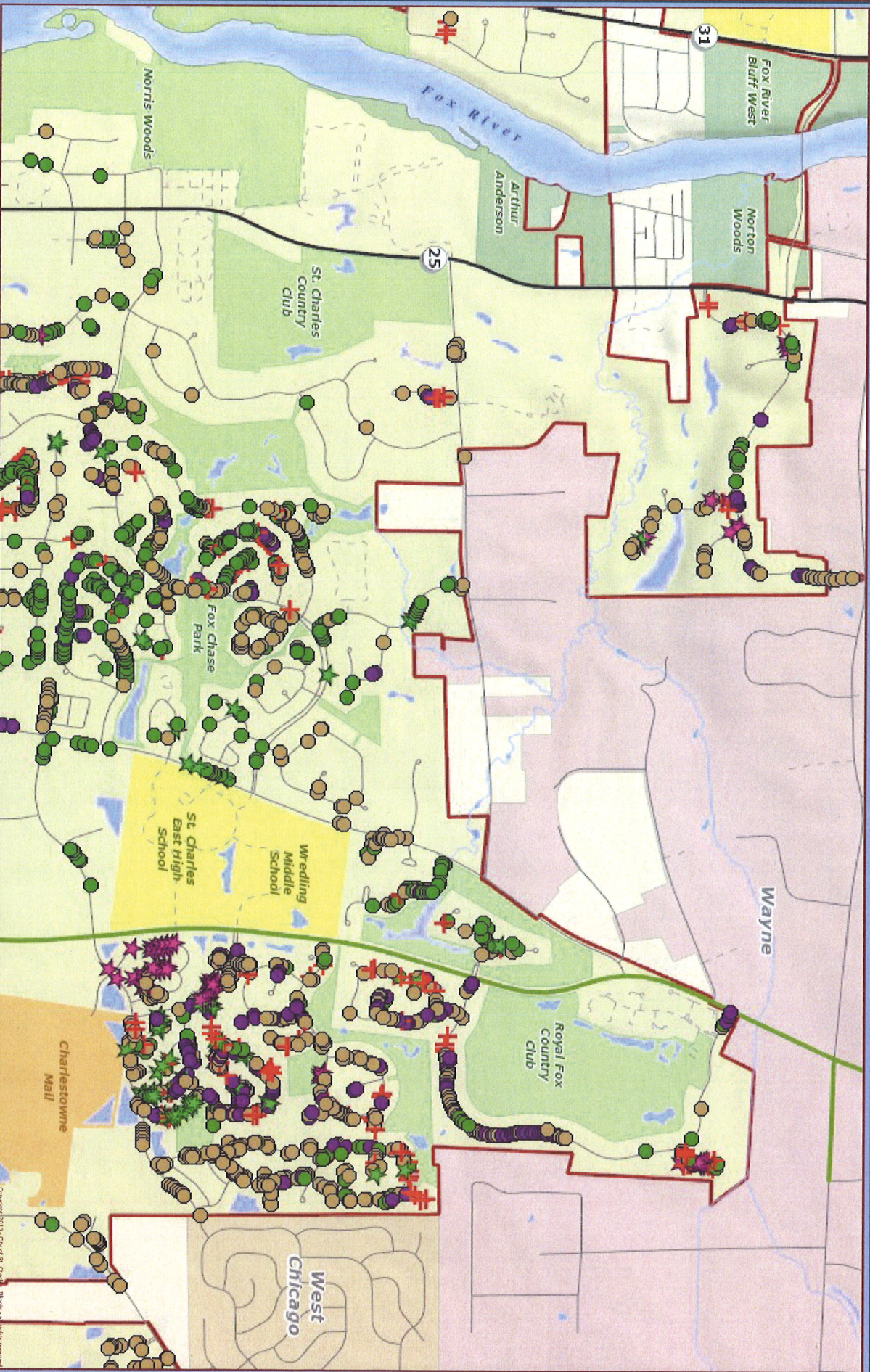


City of St. Charles, Illinois

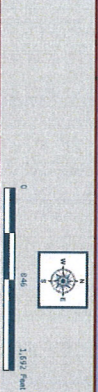
Two East Main Street, St. Charles, IL 60174-1981
 Phone: 630-577-4400 Fax: 630-577-4440 www.stcharles.il.gov

Precision GIS

DONALD P. DEWITTE Mayor
BRIAN TOWNSEND City Administrator



Map Source:
 City of St. Charles, Illinois
 Esri, Inc.
 Copyright 2011
 Projection: Transverse Mercator
 Coordinate System: Illinois State Plane East
 Printed on February 26, 2013 10:38 AM



EAB Proposed Removals NE Area 1

This map was created for planning purposes only and is not intended to be used for legal or financial purposes. The information represented on this map is for informational purposes only and does not constitute a warranty, representation, or guarantee of any kind. The City of St. Charles, Illinois, under United States Copyright laws, reserves the right to modify or discontinue this map at any time without notice. To obtain further information contact the City of St. Charles at 300 East Main Street, St. Charles, Illinois 60174-1981.

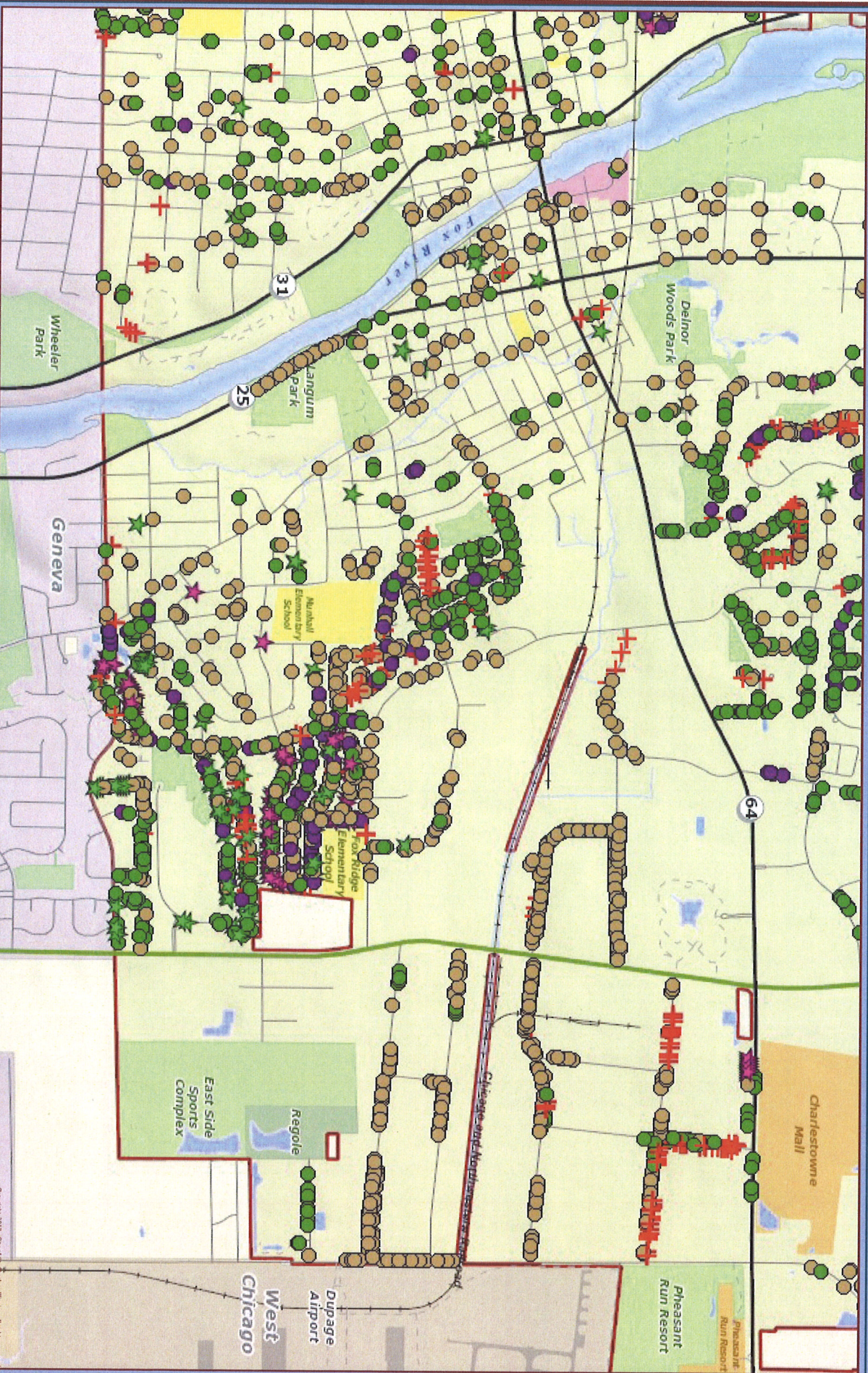


City of St. Charles, Illinois

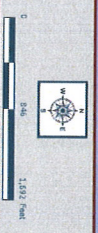
Two East Main Street, St. Charles, IL 60174-1981
 Phone: 630-577-4400 Fax: 630-577-4440 - www.stcharlesil.gov

Precision GIS

DONALD P. DEWITTE Mayor
 BRIAN TOWNSEND City Administrator



Map Source:
 City of St. Charles, Illinois
 Cook County, Illinois
 Aerial Imagery
 Projection: Transverse Mercator
 Coordinate System: Illinois State Plane East
 Map Date: 11/11/2013
 Printed on: February 20, 2013 10:46 AM



EAB Proposed Removals SE Area 2

Copyright 2013 - City of St. Charles, Illinois - all rights reserved.
 This work was created for planning purposes only and is not intended to be used for legal or financial purposes. It is not a guarantee of any kind. The information presented may be subject to change without notice. The information presented here is for informational purposes only and does not constitute a contract. To obtain written permission please contact the City of St. Charles at Two East Main Street, St. Charles, IL 60174.



City of St. Charles, Illinois

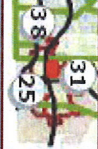
Two East Main Street, St. Charles, IL 60174-1084
Phone: (630) 577-4400 Fax: (630) 577-4440 - www.stcharles.il.gov

Precision GIS

DONALD P. DEWITTE Mayor
BRIAN TOWNSPOND City Administrator



EAB Proposed Removals Lower NW Area 3



Date Source: City of St. Charles, Illinois
Data Provider: Chicago Council of Business
Production: TreeViewa Inc.
Map Data Source: Esri, DeLorme, GeoEye, IGN, Aerotech, Earthstar, CNES, Swire, GEBCO, USDA, AeroGRID, IGN, Esri, Imagery
Printed on February 26, 2013 10:42 AM



This map is provided for informational purposes only and is not intended to be used as a legal document. The information presented may be subject to change without notice. The City of St. Charles, Illinois, is not responsible for any errors or omissions in this document. Copyright © 2013 TreeViewa Inc. All rights reserved. Printed on February 26, 2013 10:42 AM.