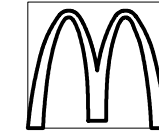
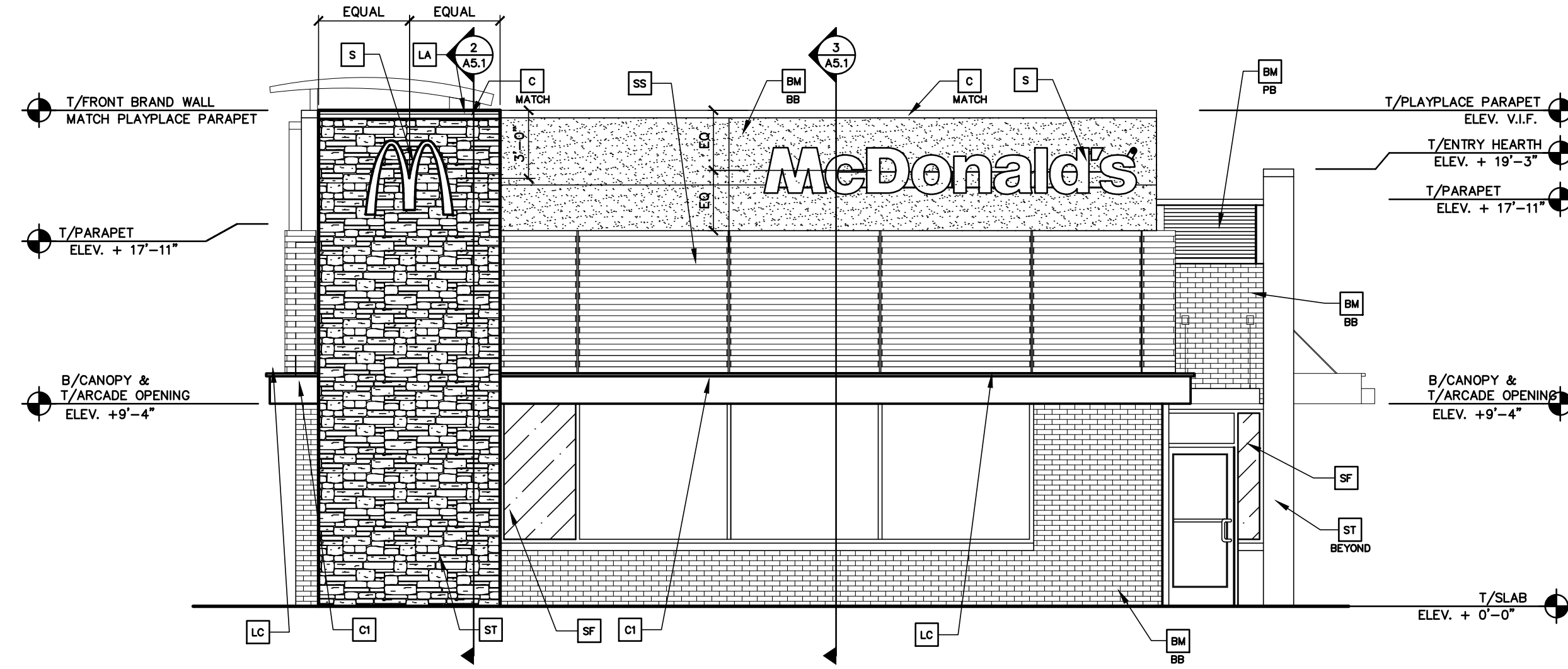


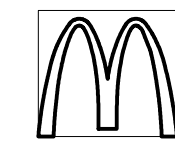
McDonald's



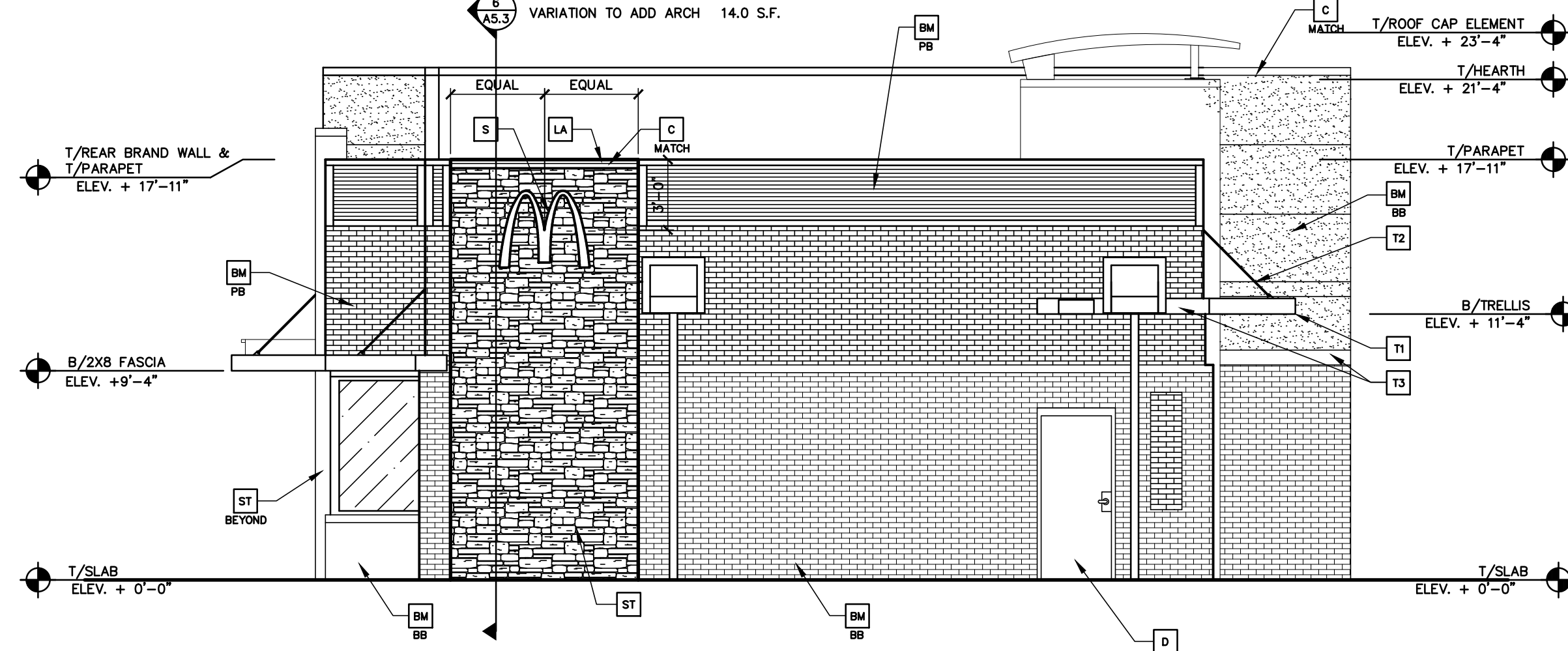
ALLOWED: 38'-0" x 1.5 = 57.0 S.F.  
 REQUESTED: 32.83 S.F.  
 VARIATION TO ADD ARCH 14.0 S.F.



A WEST (FRONT) ELEVATION  
 A2 3/16" = 1'-0"



ALLOWED: 0  
 REQUESTED: 14.0 S.F.  
 VARIATION TO ADD ARCH 14.0 S.F.



B EAST (REAR) ELEVATION  
 A2 3/16" = 1'-0"

KEY NOTES:

- |  |   |  |   |
|--|---|--|---|
| <p><b>BM</b> BUILDING MATERIAL<br/> <b>BB</b> COLOR:<br/>         BB = BASE BUILDING<br/>         DT = DRIVE THRU BANDING</p> <p><b>C1</b> ALUMINUM CANOPY (COLOR: YELLOW)<br/> <b>C2</b> ALUMINUM CANOPY TIE-BACK</p> | <p><b>C</b> METAL COPING -<br/>         COLOR TO MATCH SURROUNDING MATERIAL</p> <p><b>CJ</b> CONTROL JOINT</p> <p><b>D</b> HOLLOW METAL DOOR - PAINT TO MATCH COLOR OF SURROUNDING MATERIAL</p> <p><b>GR</b> GUARDRAIL</p> <p><b>L</b> LIGHT FIXTURE (WALL SCONCE) - SEE ELECTRICAL</p> <p><b>LA</b> LIGHT FIXTURE (ARCADE LIGHT) - SEE ELECTRICAL</p> <p><b>LC</b> LIGHT FIXTURE (CANOPY LIGHT) - SEE ELECTRICAL</p> | <p><b>ML</b> METAL LETTERING - BY OTHERS</p> <p><b>PB</b> PIPE BOLLARD - PAINTED YELLOW</p> <p><b>PT</b> PASS-THRU COIN COLLECTOR - OPTIONAL (RMHC)</p> <p><b>RE</b> ROOF CAP ELEMENT BY OTHERS</p> <p><b>RO</b> ROOF DRAIN OVERFLOW PIPE<br/>         PAINT TO MATCH SURROUNDING MATERIAL</p> <p><b>S</b> McDONALD'S SIGNAGE BY OTHERS - UNDER SEPARATE PERMIT. SEE SIGNAGE SUPPORT NOTE ON THIS SHEET.</p> <p><b>SF</b> NEW STOREFRONT AND GLAZING</p> <p><b>T</b> - T = TEMPERED GLASS</p> <p><b>SP</b> SPANDREL PANEL<br/>         COLOR TO MATCH SURROUNDING MATERIAL</p> | <p><b>SS</b> METAL LOUVER SUNSCREEN PANEL</p> <p><b>ST</b> CULTURED STONE</p> <p><b>T1</b> ALUMINUM TRELLIS</p> <p><b>T2</b> ALUMINUM TRELLIS TIE-BACK</p> <p><b>T3</b> ALUMINUM TRELLIS 2x8 WALL FASCIA</p> <p><b>W2</b> DRIVE-THRU WINDOW BY READY ACCESS CONFIRM MODEL, OPTIONS, AND SIZE WITH MCD PROJECT MANAGER OPTIONS INCLUDE: TRANSOM (SHOWN)</p> <p><b>XX</b> SLIDE DIRECTION: RL = RIGHT TO LEFT<br/>         LR = LEFT TO RIGHT</p> |
|--|---|--|---|

**NOTE:** EDIT PER SITE SPECIFIC REQUIREMENT

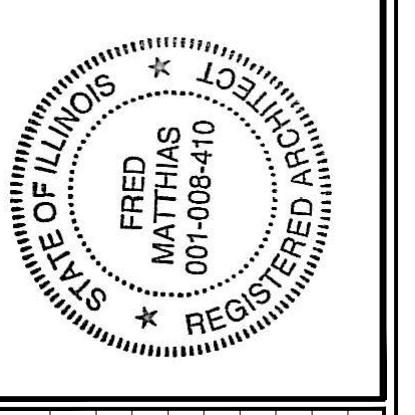
**COLOR LEGEND:** (ALL COLORS ARE PER BENJAMIN MOORE PAINTS, U.N.O.)

TERRA COTTA SCHEME	ARCADES & HEARTH	SOUTHWEST PRO-FIT LEDGESTONE PF-8019
	BASE BUILDING	EARTHY RUSSET #2173-10
	DRIVE THRU BANDING	AZTEC BRICK #2175-10
	PARAPET BAND	CORRUGATED METAL - 7/8" "S" PANEL 24 GAUGE COLOR: CITY SCAPE



ALL DRAWINGS AND WRITTEN MATERIAL CONTAINED HEREIN ARE THE PROPERTY OF LINGLE DESIGN GROUP, INC. THEY MAY NOT BE REVISED, COPIED, REPRODUCED, OR DISCLOSED IN ANY MANNER WITHOUT WRITTEN AUTHORIZATION FROM THE ARCHITECT.

PREPARED FOR:  
**McDonald's USA, LLC**  
 4320 WINFIELD ROAD  
 WARRENVILLE, IL 60555



DATE: MAY 17, 2013

NO.	REVISIONS DESCRIPTION	DATE

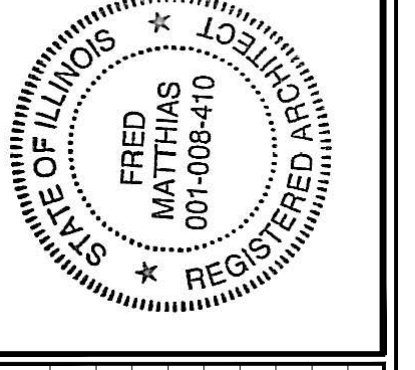
McDONALD'S RESTAURANT  
 3900 E. MAIN  
 St. Charles, IL

DRAWN BY: GLB  
 CHECKED BY: FTM  
 APPROVED BY: FTM

PROJ. NO.:  
 DATE: 5/13/13

SHEET NUMBER  
**A2.0**

ALL DRAWINGS AND WRITTEN MATERIAL CONTAINED HEREIN ARE THE PROPERTY OF LINGLE DESIGN GROUP, INC. THEY MAY NOT BE REPRODUCED, COPIED, REPRODUCED, OR DISCLOSED IN ANY MANNER WITHOUT WRITTEN AUTHORIZATION FROM THE ARCHITECT.



DATE: MAY 17, 2013

NO.	REVISIONS	DATE
	DESCRIPTION	

McDonald's RESTAURANT  
 3900 E. MAIN  
 St. Charles, IL

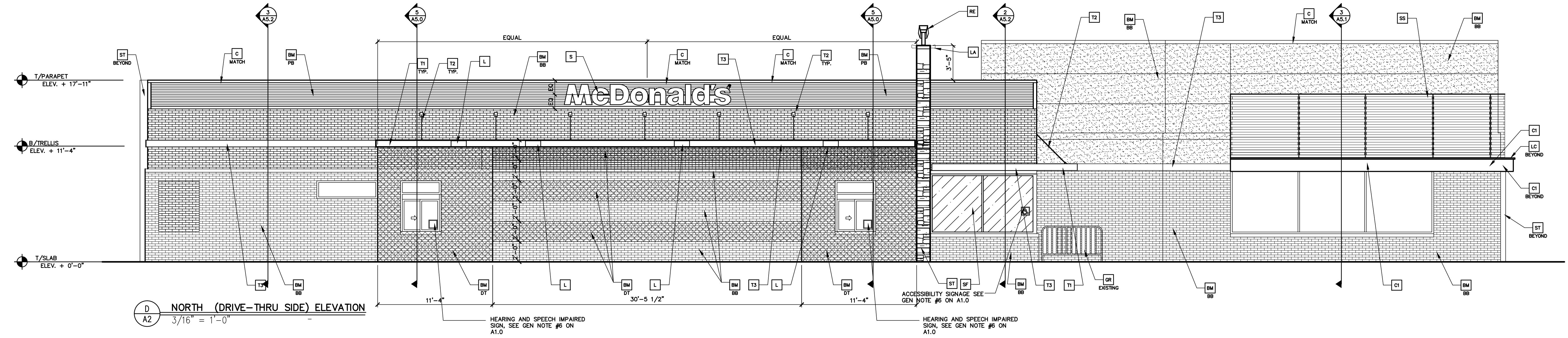
PROJ. NO.: -

DATE: 5/13/13

SHEET NUMBER  
**A2.1**

# McDonald's

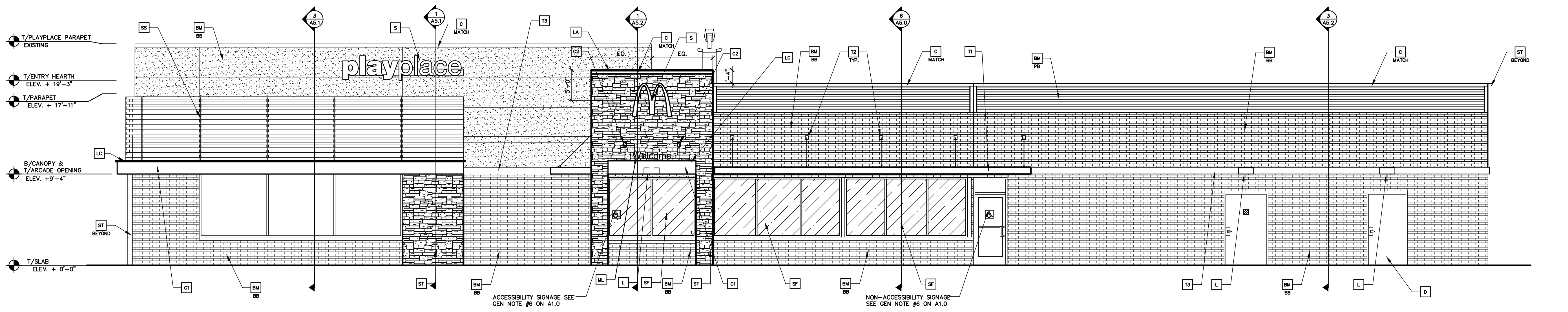
ALLOWED: 133'-7" X 1.5 = 200.0 S.F.  
 REQUESTED: 32,8317 S.F.



**D** NORTH (DRIVE-THRU SIDE) ELEVATION  
 A2 3/16" = 1'-0"

# playplace

ALLOWED: 133'-7" X 1.5 = 200.0 S.F.  
 REQUESTED: 194,996 S.F.



**C** SOUTH (NON-DRIVE THRU SIDE) ELEVATION  
 A2 3/16" = 1'-0"

**KEY NOTES:**

- |  |   |  |   |
|--|---|--|---|
| <p><b>BM</b> BUILDING MATERIAL</p> <p><b>BB</b> COLOR:<br/>         BB = BASE BUILDING<br/>         DT = DRIVE THRU BANDING</p> <p><b>C1</b> ALUMINUM CANOPY (COLOR: YELLOW)</p> <p><b>C2</b> ALUMINUM CANOPY TIE-BACK</p> | <p><b>C</b> METAL COPING -<br/>         COLOR TO MATCH SURROUNDING MATERIAL</p> <p><b>CJ</b> CONTROL JOINT</p> <p><b>D</b> HOLLOW METAL DOOR - PAINT TO MATCH COLOR OF SURROUNDING MATERIAL</p> <p><b>GR</b> GUARDRAIL</p> <p><b>L</b> LIGHT FIXTURE (WALL SCONCE) - SEE ELECTRICAL</p> <p><b>LA</b> LIGHT FIXTURE (ARCADE LIGHT) - SEE ELECTRICAL</p> <p><b>LC</b> LIGHT FIXTURE (CANOPY LIGHT) - SEE ELECTRICAL</p> | <p><b>ML</b> METAL LETTERING - BY OTHERS</p> <p><b>PB</b> PIPE BOLLARD - PAINTED YELLOW</p> <p><b>PT</b> PASS-THRU COIN COLLECTOR - OPTIONAL (RMHC)</p> <p><b>RE</b> ROOF CAP ELEMENT BY OTHERS</p> <p><b>RO</b> ROOF DRAIN OVERFLOW PIPE<br/>         PAINT TO MATCH SURROUNDING MATERIAL</p> <p><b>S</b> McDONALD'S SIGNAGE BY OTHERS - UNDER SEPARATE PERMIT. SEE SIGNAGE SUPPORT NOTE ON THIS SHEET.</p> <p><b>SF</b> NEW STOREFRONT AND GLAZING</p> <p><b>T</b> - T = TEMPERED GLASS</p> <p><b>SP</b> SPANDREL PANEL<br/>         COLOR TO MATCH SURROUNDING MATERIAL</p> | <p><b>SS</b> METAL LOUVER SUNSCREEN PANEL</p> <p><b>ST</b> CULTURED STONE</p> <p><b>T1</b> ALUMINUM TRELLIS</p> <p><b>T2</b> ALUMINUM TRELLIS TIE-BACK</p> <p><b>T3</b> ALUMINUM TRELLIS 2x8 WALL FASCIA</p> <p><b>W2</b> DRIVE-THRU WINDOW BY READY ACCESS CONFIRM MODEL, OPTIONS, AND SIZE WITH MCD PROJECT MANAGER OPTIONS INCLUDE: TRANSOM (SHOWN)</p> <p><b>XX</b> SLIDE DIRECTION: RL = RIGHT TO LEFT<br/>         LR = LEFT TO RIGHT</p> |
|--|---|--|---|

**NOTE:** EDIT PER SITE SPECIFIC REQUIREMENT

TERRA COTTA SCHEME	ARCADES & HEARTH	SOUTHWEST PRO-FIT LEDGESTONE PF-8019
BASE BUILDING	EARTHY RUSSET #2173-10	
DRIVE THRU BANDING	AZTEC BRICK #2175-10	
PARAPET BAND	CORRUGATED METAL - 7/8" 5" PANEL 24 GAUGE COLOR: CITY SCOPE	



Existing Images



Rear Elevation



Front Elevation



Drive-Thru Elevation



Non-Drive-Thru Elevation



Imagine

Create

Excite

IMAGINATE



McDonald's  
3900 E. Main St.  
St. Charles, IL