	AGENDA ITEM EXECUTIVE SUMMARY						
	Title:	EAB Control Efforts – Information Only					
	Presenter:						
<i>Please check appropriate box:</i>							
	Government Operations		X	Government Services 07.22.13			
	Planning & Development			City Council			
	Public Hearing						
Estimated Cost:		Budgeted:	YES		NO		
If NO, please explain how item will be funded:							
Executive Summary:							
<p>This is a monthly update on EAB activities for July 2013. This update provides detailed information about the EAB infestation including EAB confirmation status and ash trees proposed to be removed beginning in the month of August, 2013.</p>							
Attachments: <i>(please list)</i>							
Summary Sheet							
Recommendation / Suggested Action <i>(briefly explain):</i>							
For information only.							
<i>For office use only:</i>		<i>Agenda Item Number: 3.b</i>					



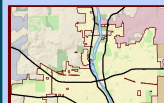
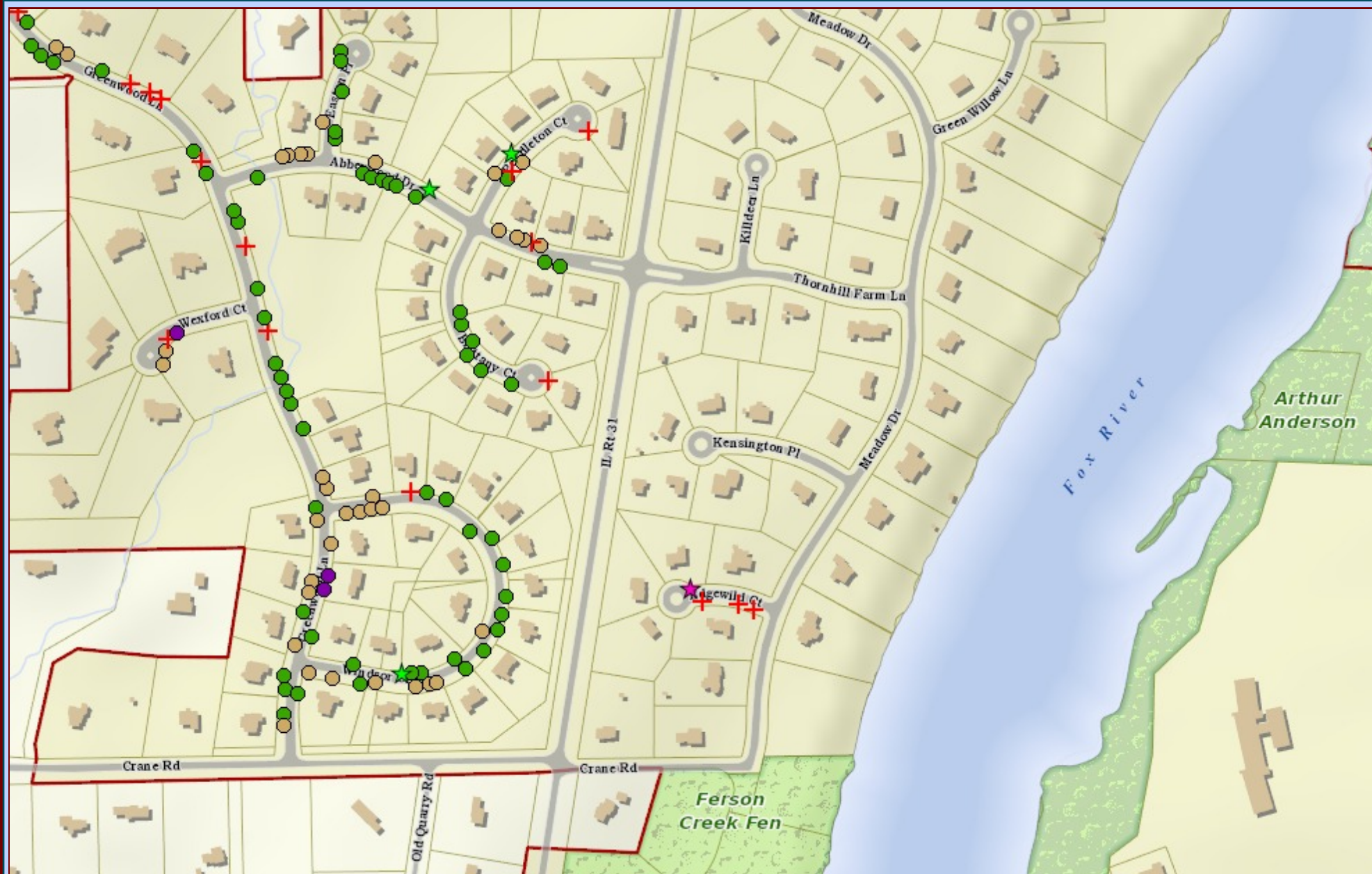
City of St. Charles, Illinois

Two East Main Street St. Charles, IL 60174-1984
Phone: 630-377-4400 Fax: 630-377-4440 - www.stcharlesil.gov

Precision GIS

RAYMOND ROGINA Mayor

BRIAN TOWNSEND City Administrator



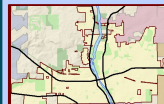
Data Source:
City of St. Charles, Illinois
Kane County, Illinois
DuPage County, Illinois
Projection: Transverse Mercator
Coordinate System: Illinois State Plane East
North American Datum 1983
Printed on: July 10, 2013 12:16 PM



0 205 410 Feet

EAB Proposed Removals - Upper NW

This work was created for planning purposes only and is provided as is, without warranty of any kind, either expressed or implied. The information represented may contain proprietary and confidential property of the City of St. Charles, Illinois. Under United States Copyright protection laws you may not use, reproduce, or distribute any part of this document without prior written permission. To obtain written permission please contact the City of St. Charles at Two East Main Street, St. Charles, IL 60174.
Powered by Precision GIS



Data Source:
City of St. Charles, Illinois
Kane County, Illinois
DuPage County, Illinois
Projection: Transverse Mercator
Coordinate System: Illinois State Plane East
North American Datum 1983
Printed on: July 10, 2013 12:19 PM



0 551 1,102 Feet

EAB Proposed Removals - Lower NW Area 2

This work was created for planning purposes only and is provided as is, without warranty of any kind, either expressed or implied. The information represented may contain proprietary and confidential property of the City of St. Charles, Illinois. Under United States Copyright protection laws you may not use, reproduce, or distribute any part of this document without prior written permission. To obtain written permission please contact the City of St. Charles at Two East Main Street, St. Charles, IL 60174.
Precision GIS

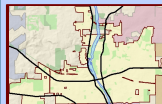
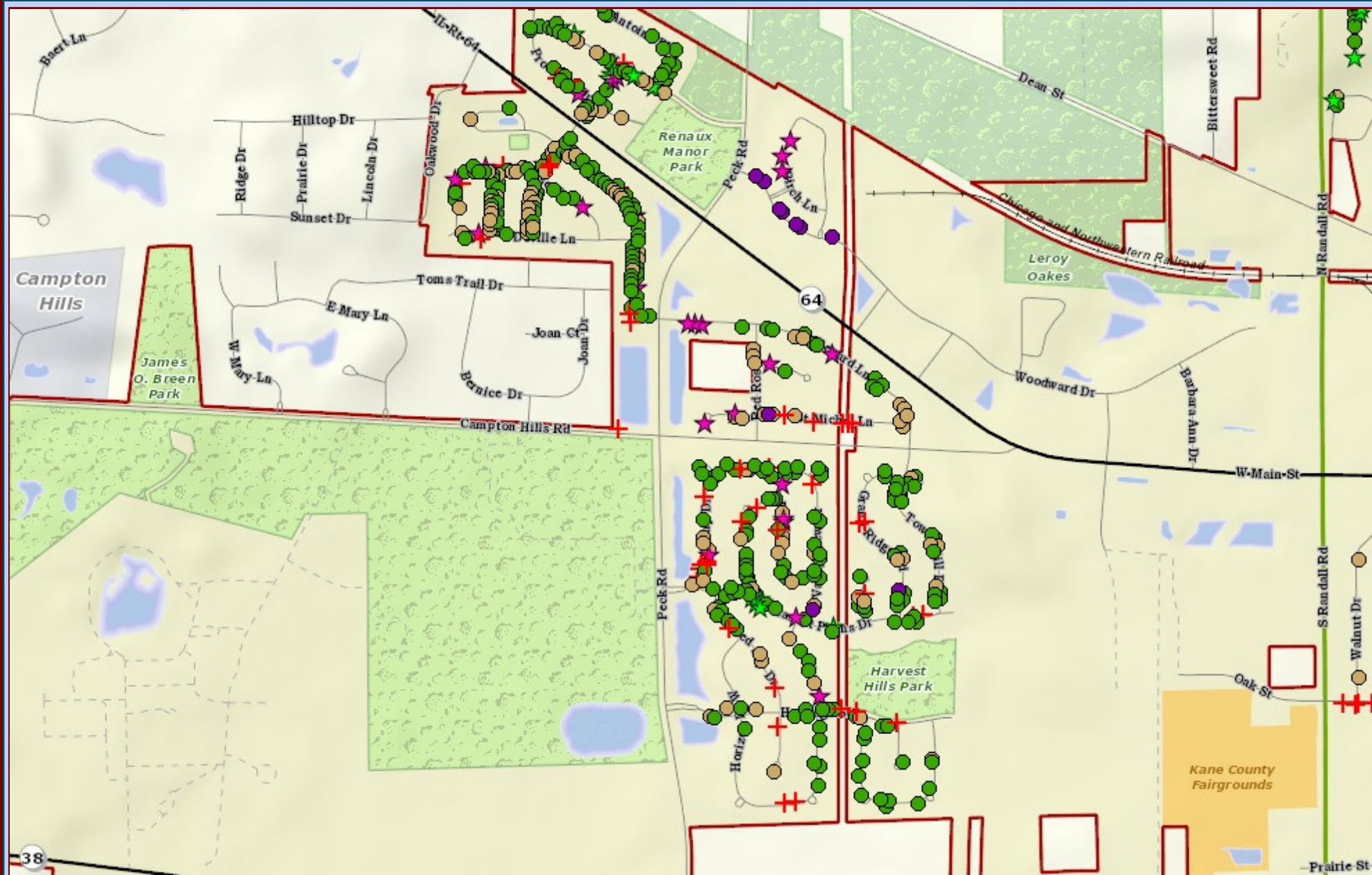


City of St. Charles, Illinois

Two East Main Street St. Charles, IL 60174-1984
Phone: 630-377-4400 Fax: 630-377-4440 - www.stcharlesil.gov

Precision GIS

RAYMOND ROGINA Mayor
BRIAN TOWNSEND City Administrator



Data Source:
City of St. Charles, Illinois
Kane County, Illinois
DuPage County, Illinois
Projection: Transverse Mercator
Coordinate System: Illinois State Plane East
North American Datum 1983
Printed on: July 10, 2013 12:20 PM



0 551 1,102 Feet

EAB Proposed Removals - FW Area 3

This work was created for planning purposes only and is provided as is, without warranty of any kind, either expressed or implied. The information represented may contain proprietary and confidential property of the City of St. Charles, Illinois. Under United States Copyright protection laws you may not use, reproduce, or distribute any part of this document without prior written permission. To obtain written permission please contact the City of St. Charles at Two East Main Street, St. Charles, IL 60174.
Powered by Precision GIS



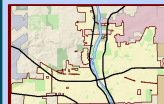
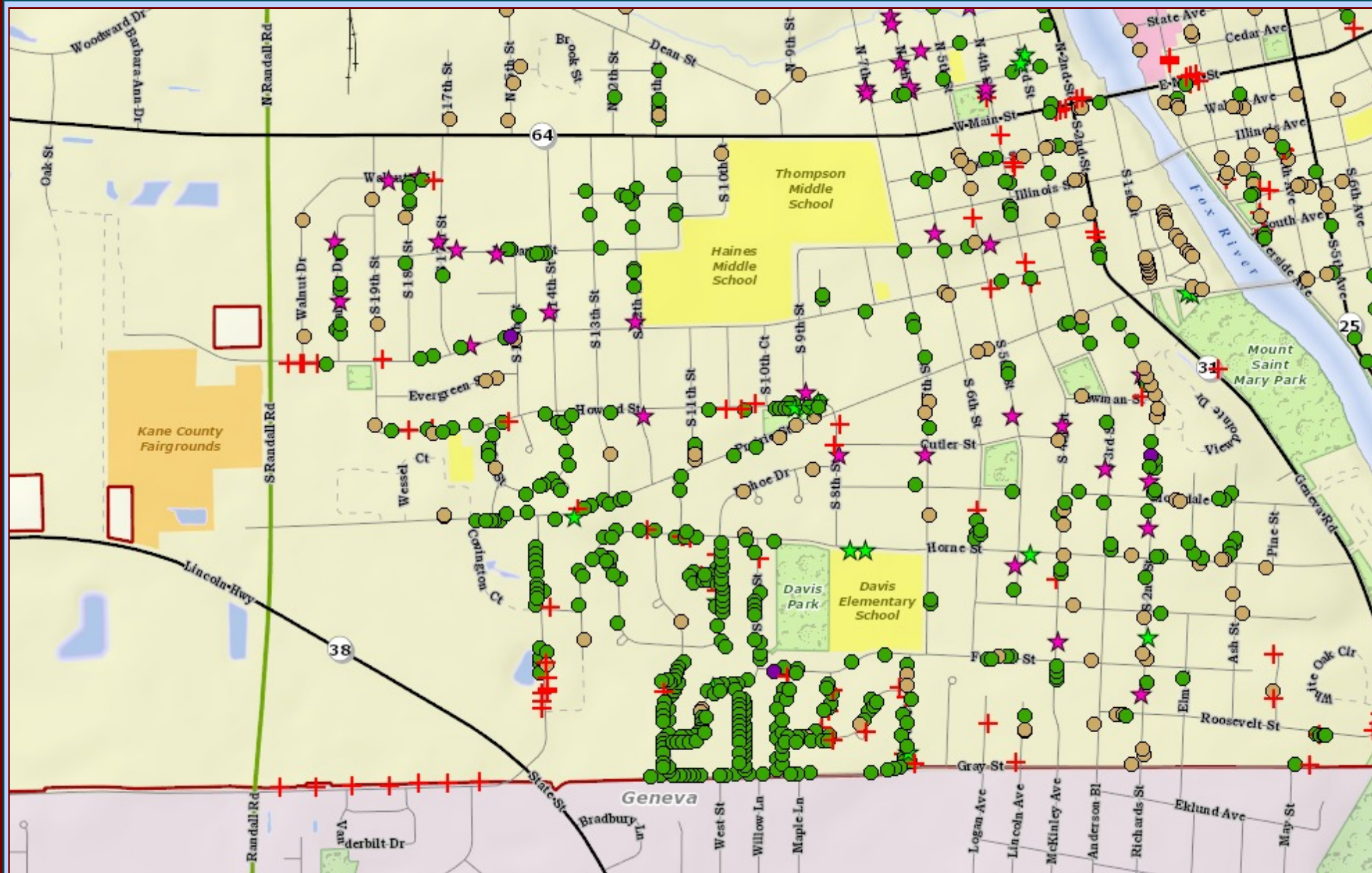
City of St. Charles, Illinois

Two East Main Street St. Charles, IL 60174-1984
Phone: 630-377-4400 Fax: 630-377-4440 - www.stcharlesil.gov

Precision GIS

RAYMOND ROGINA Mayor

BRIAN TOWNSEND City Administrator



Data Source:
City of St. Charles, Illinois
Kane County, Illinois
DuPage County, Illinois
Projection: Transverse Mercator
Coordinate System: Illinois State Plane East
North American Datum 1983
Printed on: July 10, 2013 12:23 PM



0 551 1,102 Feet

EAB Proposed Removals - SW Area 4

This work was created for planning purposes only and is provided as is, without warranty of any kind, either expressed or implied. The information represented may contain proprietary and confidential property of the City of St. Charles, Illinois. Under United States Copyright protection laws you may not use, reproduce, or distribute any part of this document without prior written permission. To obtain written permission please contact the City of St. Charles at Two East Main Street, St. Charles, IL 60174.
Powered by Precision GIS

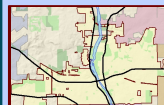
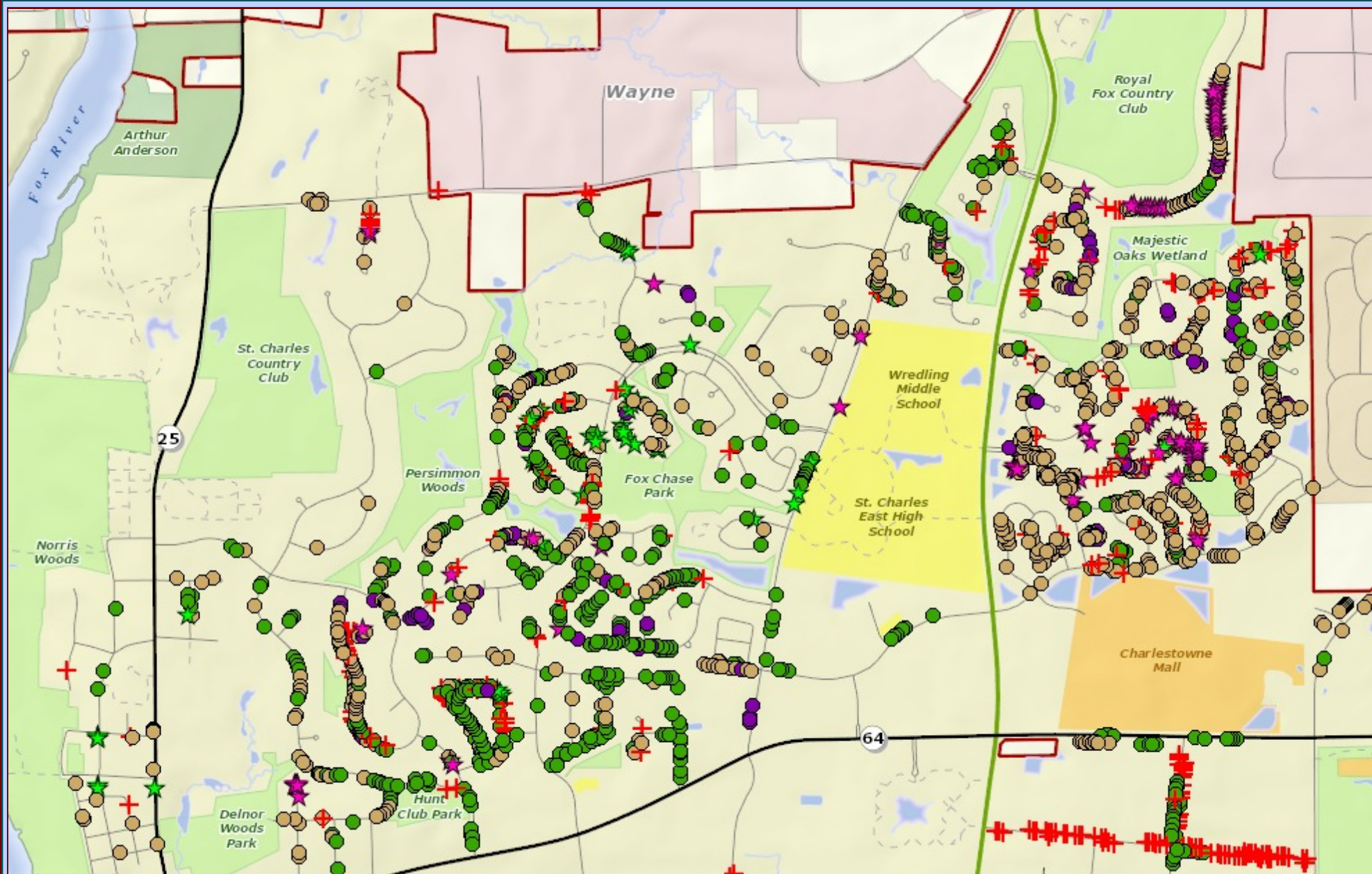


City of St. Charles, Illinois

Two East Main Street St. Charles, IL 60174-1984
Phone: 630-377-4400 Fax: 630-377-4440 - www.stcharlesil.gov

Precision GIS

RAYMOND ROGINA Mayor
BRIAN TOWNSEND City Administrator



Data Source:
City of St. Charles, Illinois
Kane County, Illinois
DuPage County, Illinois
Projection: Transverse Mercator
Coordinate System: Illinois State Plane East
North American Datum 1983
Printed on: July 10, 2013 12:25 PM



0 739 1,479 Feet

EAB Proposed Removals - NE Area 5

This work was created for planning purposes only and is provided as is, without warranty of any kind, either expressed or implied. The information represented may contain proprietary and confidential property of the City of St. Charles, Illinois. Under United States Copyright protection laws you may not use, reproduce, or distribute any part of this document without prior written permission. To obtain written permission please contact the City of St. Charles at Two East Main Street, St. Charles, IL 60174.
Powered by Precision GIS

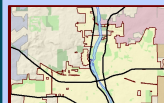
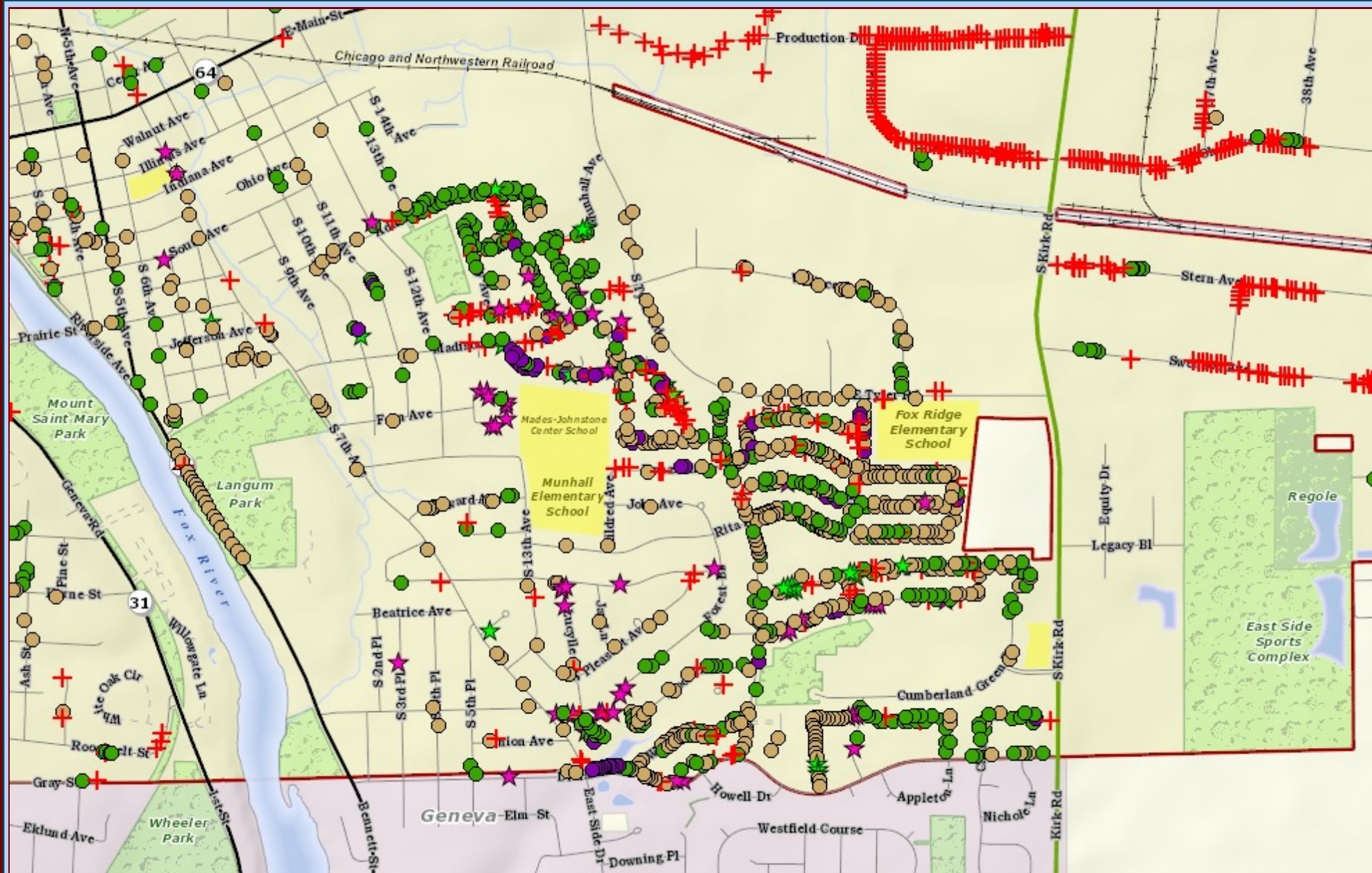


City of St. Charles, Illinois

Two East Main Street St. Charles, IL 60174-1984
Phone: 630-377-4400 Fax: 630-377-4440 - www.stcharlesil.gov

Precision GIS

RAYMOND ROGINA Mayor
BRIAN TOWNSEND City Administrator



Data Source:
City of St. Charles, Illinois
Kane County, Illinois
DuPage County, Illinois
Projection: Transverse Mercator
Coordinate System: Illinois State Plane East
North American Datum 1983
Printed on: July 10, 2013 12:28 PM



0 591 1,182 Feet

EAB Proposed Removals - SE Area 6

This work was created for planning purposes only and is provided as is, without warranty of any kind, either expressed or implied. The information represented may contain proprietary and confidential property of the City of St. Charles, Illinois. Under United States Copyright protection laws you may not use, reproduce, or distribute any part of this document without prior written permission. To obtain written permission please contact the City of St. Charles at Two East Main Street, St. Charles, IL 60174.
Powered by Precision GIS

Emerald Ash Borer Monthly Summary Sheet

July 2013

The Emerald Ash Borer Monthly Summary Sheet is prepared each month by the Public Services Staff for each Government Services Meeting. This summary documents the Spread of EAB (Confirmed Trees), Control Measures (Removed & Treated Trees) and Planting Efforts (New Trees). Unless noted otherwise, all data listed below reflects One (1) month starting on the 1st and ending on the last day of each month. EAB Maps and an address list of Proposed Removals will be attached to this report.

Confirmed Trees

- As of June 1, 2012, all Public Ash trees in the City of St. Charles have been reviewed for EAB. Initially, 1,000 trees were confirmed with EAB in phase one of the current EAB program and have been removed as of the end of 2012. The second round of 1,000 trees has already been confirmed and removal is almost complete for phase two of the program. Phase three began with the removals scheduled for May, 2013.

Proposed Tree Removals

- We are proposing to remove **220** Ash Trees starting in the month of August, 2013, including:
 1. 6 in the NW Quadrant
 2. 36 in the SW Quadrant
 3. 98 in the NE Quadrant
 4. 55 in the SE Quadrant
 5. 25 in the FW Quadrant

Treating & Planting Notes

- Spring planting of over 700 tree sites was completed as of June 7, 2013.

Additional Comments

None