	AGENDA ITEM EXECUTIVE SUMMARY						
	Title:	Recommendation to Prepare an Ordinance Approving Street Name Change for Charter One Avenue					
	Presenter:	Mark Koenen					
<i>Please check appropriate box:</i>							
	Government Operations		X	Government Services 07.22.13			
	Planning & Development			City Council			
	Public Hearing						
Estimated Cost:	\$NA	Budgeted:	YES		NO		
If NO, please explain how item will be funded:							
Executive Summary:							
<p>A request was received from US Bank to change the street name, Charter One Avenue, along their property at 135 Smith Road. As you may recall, this street name was selected when the subdivision was originally processed and Charter One Bank was located at 135 Smith Road. For your information, there are no improved lots with Charter One Avenue addresses presently (see attached drawing). In the long term, planning is in place for a street to extend from the intersection of Foxfield Dr. and King Edward Ave to the present dead end of Charter One Avenue. If the committee would elect to change the street name, King Edward Avenue would be a logical new name for the present Charter One Avenue.</p>							
Attachments: <i>(please list)</i>							
Drawing of the Charter One Avenue and King Edward Avenue area.							
Recommendation / Suggested Action <i>(briefly explain):</i>							
Recommendation to prepare an Ordinance approving street name change from Charter One Avenue to King Edward Avenue.							
<i>For office use only:</i>		<i>Agenda Item Number: 4.b</i>					

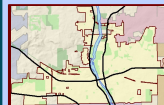
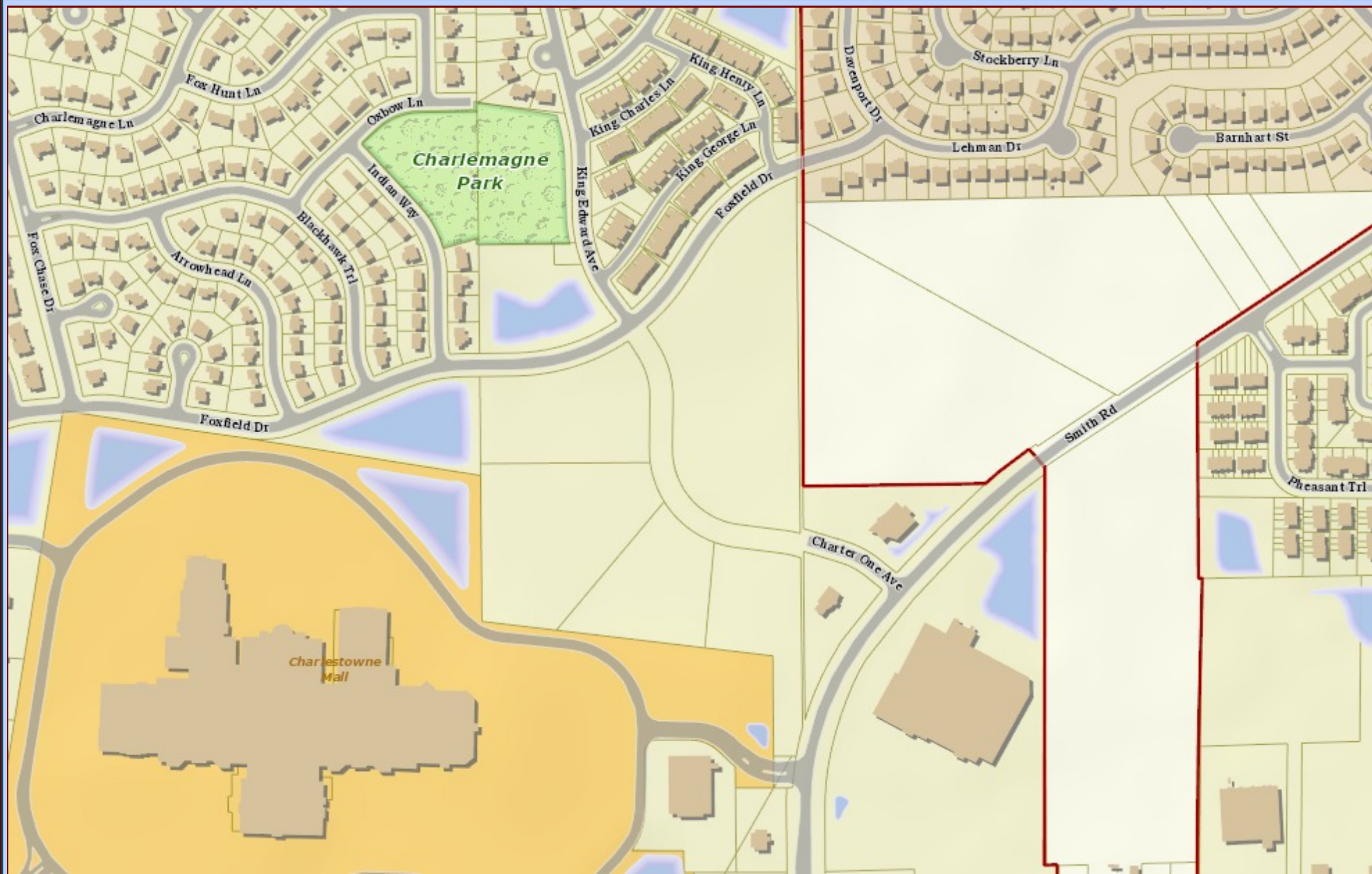


City of St. Charles, Illinois

Two East Main Street St. Charles, IL 60174-1984
Phone: 630-377-4400 Fax: 630-377-4440 - www.stcharlesil.gov

Precision GIS

RAYMOND ROGINA *Mayor*
BRIAN TOWNSEND *City Administrator*



Data Source:
City of St. Charles, Illinois
Kane County, Illinois
DuPage County, Illinois
Projection: Transverse Mercator
Coordinate System: Illinois State Plane East
North American Datum 1983
Printed on: July 10, 2013 07:45 AM



0 230 460 Feet

This work was created for planning purposes only and is provided as is, without warranty of any kind, either expressed or implied. The information represented may contain proprietary and confidential property of the City of St. Charles, Illinois. Under United States Copyright protection laws you may not use, reproduce, or distribute any part of this document without prior written permission. To obtain written permission please contact the City of St. Charles at Two East Main Street, St. Charles, IL 60174.
Powered by Precision GIS

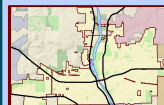
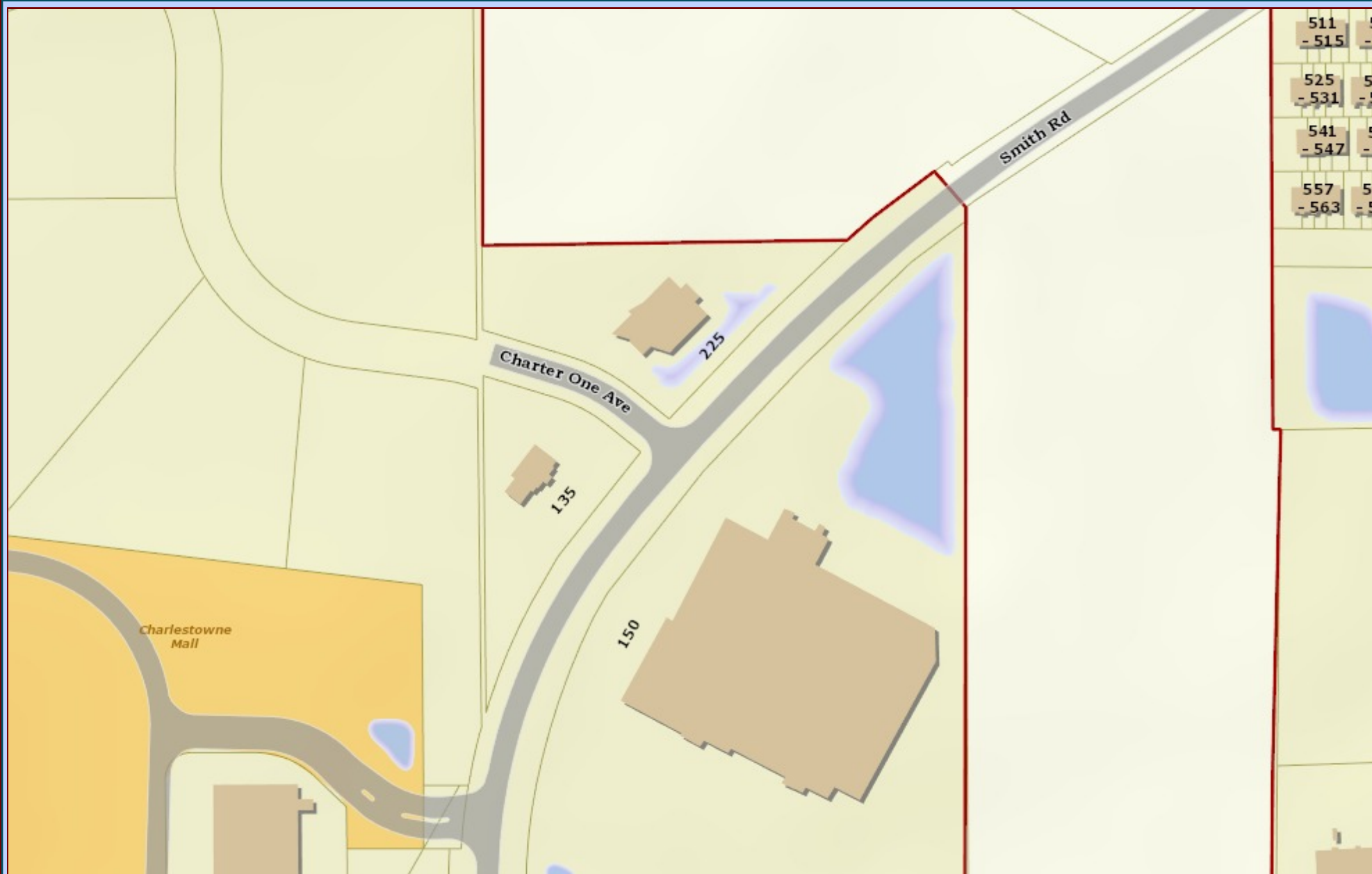


City of St. Charles, Illinois

Two East Main Street St. Charles, IL 60174-1984
Phone: 630-377-4400 Fax: 630-377-4440 - www.stcharlesil.gov

Precision GIS

RAYMOND ROGINA Mayor
BRIAN TOWNSEND City Administrator



Data Source:
City of St. Charles, Illinois
Kane County, Illinois
DuPage County, Illinois
Projection: Transverse Mercator
Coordinate System: Illinois State Plane East
North American Datum 1983
Printed on: July 10, 2013 08:27 AM



0 115 230 Feet

This work was created for planning purposes only and is provided as is, without warranty of any kind, either expressed or implied. The information represented may contain proprietary and confidential property of the City of St. Charles, Illinois. Under United States Copyright protection laws you may not use, reproduce, or distribute any part of this document without prior written permission. To obtain written permission please contact the City of St. Charles at Two East Main Street, St. Charles, IL 60174.
Powered by Precision GIS