		HISTORIC PRESERVATION COMMISSION AGENDA ITEM EXECUTIVE SUMMARY				
		Agenda Item Title/Address:		COA: 2 E. Main Street, Municipal Center		
		Proposal:		New exterior lighting plan		
		Petitioner:		City of St. Charles		
		Please check appropriate box (x)				
		PUBLIC HEARING			MEETING 7/22/13	X
AGENDA ITEM CATEGORY:						
X	Certificate of Appropriateness (COA)			Façade Improvement Plan		
	Preliminary Review			Landmark/District Designation		
	Discussion Item			Commission Business		
ATTACHMENTS:						
Presentation of Municipal Building Lighting Concept by KJWW						
EXECUTIVE SUMMARY:						
<p>The Municipal Center exterior renovation project is underway. As a part of the construction, existing flood lights sitting on wood structures on the lower canopy roofs on the south and west elevations have been dismantled and moved off of the roof. These flood lights were installed in the mid to late 1990s. The initial plan was to return the floodlights to their previous location when the construction was complete.</p> <p>The City is considering a new lighting scheme for the exterior of the building. Older photos and exterior fixture locations indicate that historically, the building was not flooded with light, but rather accent lighting was used in specific locations to highlight architectural details. Lighting was also provided under the first floor canopy. A photo from the early 1990s is attached. (The second floor Council Chambers portion of the building did not appear to be illuminated previously.)</p> <p>Information on the proposed lighting scheme was presented at the 7/17/13 meeting and is described in the attached presentation.</p> <p>The Commission asked for the different LED light tones to be displayed on the building. Sample lights will be set up for the Commission to view and vote on a preferred tone.</p>						
RECOMMENDATION / SUGGESTED ACTION:						
Provide feedback and recommendations for approval of the COA.						



St. Charles Municipal Building Lighting Concept



Shanna Olson, LC
Senior Lighting Designer

St. Charles Municipal Building Lighting Concept

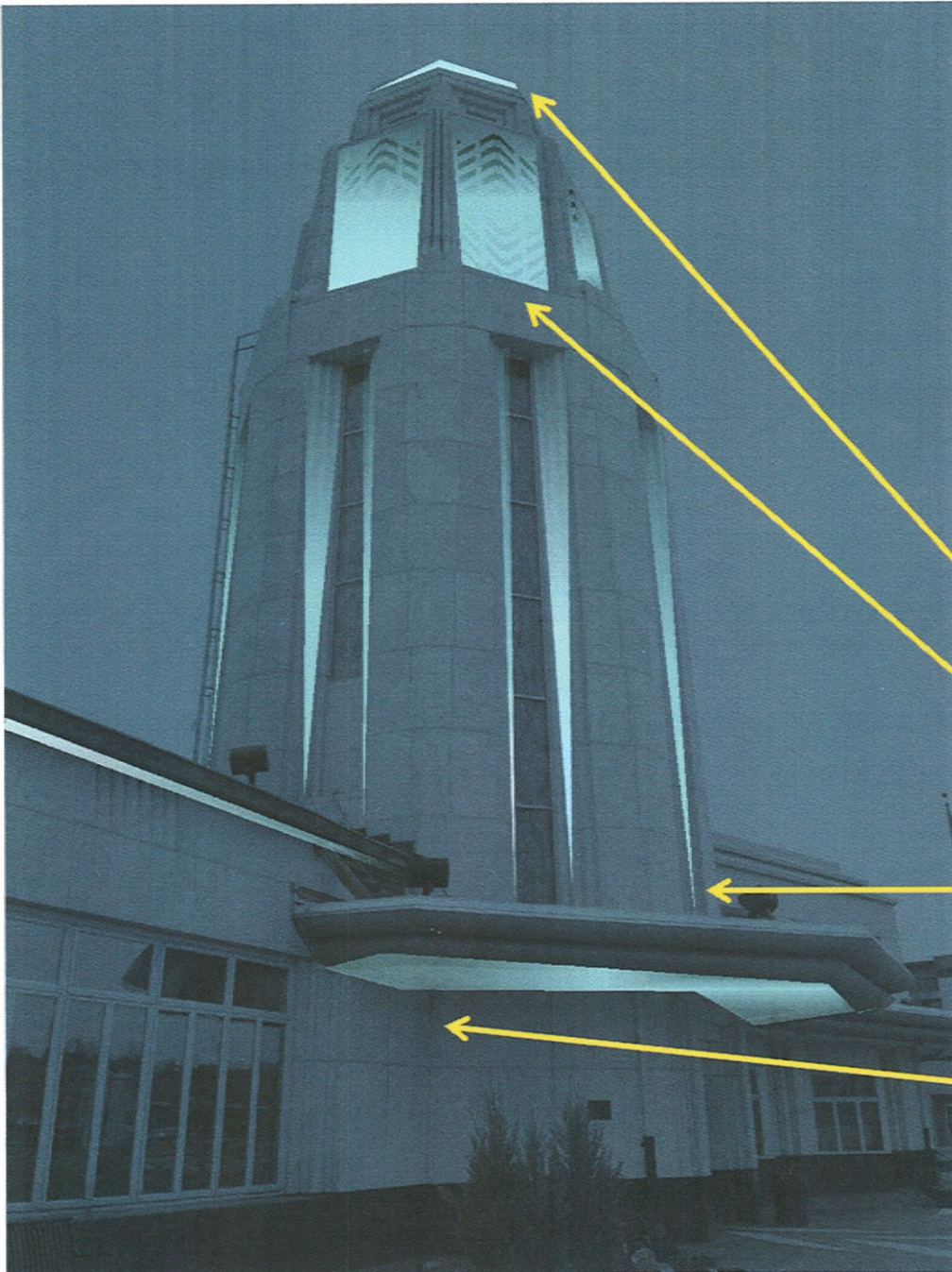
Concept: to provide a compositional Hierarchy that accentuates the architecture while creating balance

Existing lighting in dome to remain

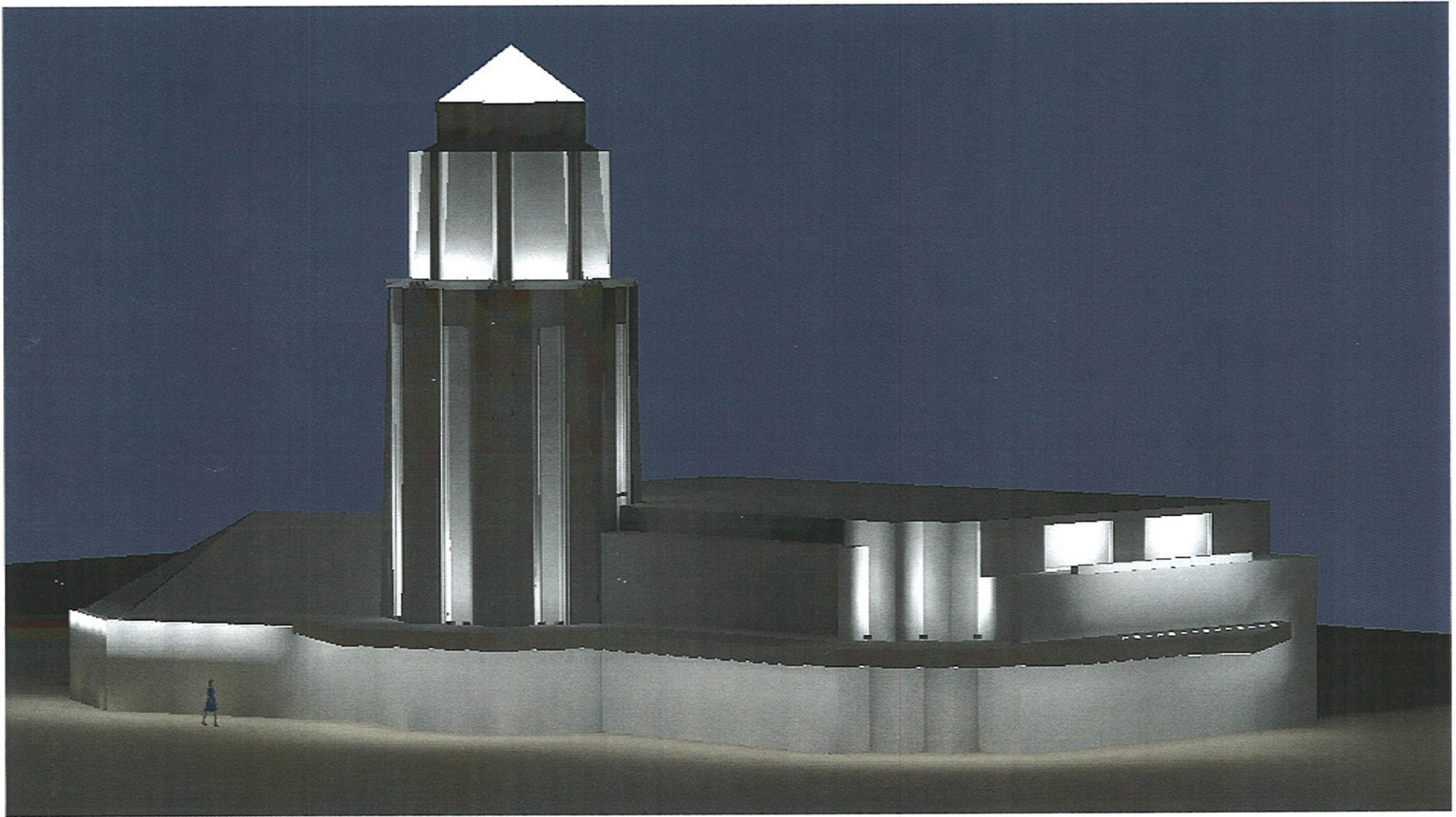
Linear grazing luminaire to accentuate and punch architectural relief

Directional spots with tight 7° beam spread to highlight the fluting and create interest

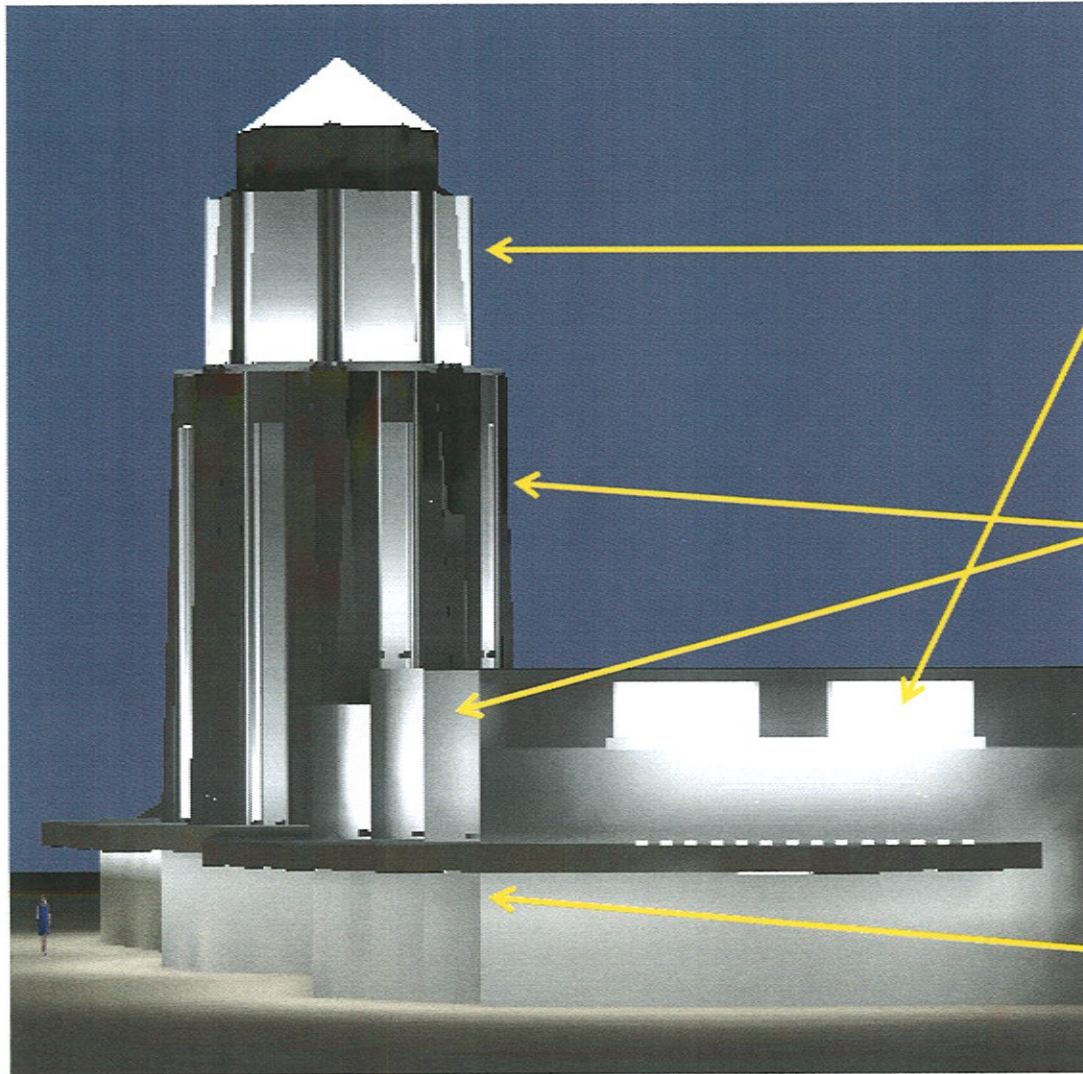
Hidden linear lighting to subtly add balance and illuminate the lower plane of the building



St. Charles Municipal Building Lighting Design



St. Charles Municipal Building Lighting Design



St. Charles Municipal Building

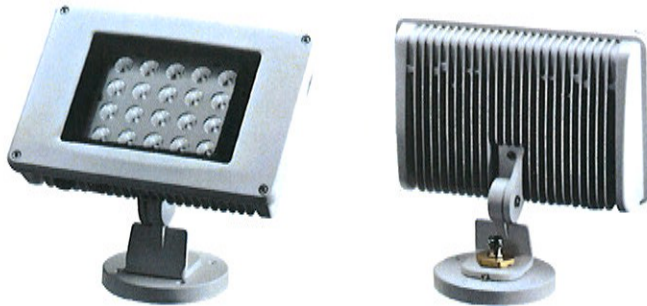
Additional Lighting Options and Concepts



- Add wall mount luminaires to East Entrance
- Add Landscape lighting in flower beds adjacent to entrance
- Color changing LED at top to allow for seasonal tones or shows.
- Illuminating diagonal shafts in lieu of fluted columns.
- Energy Code Note: IECC 2012 exempts lighting to highlight features of registered historic buildings

DynaFlood HO

Client:	
Project:	
Type:	
Order Code:	
Quantity:	



DynaFlood HO is a high powered flood fixture designed for exterior illumination and outdoor signage. It's integral power supply is universal voltage and can be dimmed via ELV or TRIAC. The head pivots 180° to help you get the exact angle needed for your application.

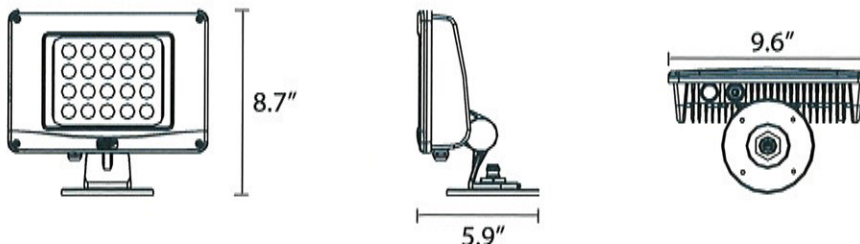
SPECIFICATIONS

Color Temperature	2700k, 3000K, 3500K, 4000k
Beam Angle	7° Standard, 20°, 40°, 10° x 60°, 70° via LSF Filter
Drive Current	500ma
Power Consumption	50W
Total Lumens	2455 @ 4000K, 7°
Efficacy (lm/W)	49
CRI	79
Lumen Maintenance	70% @ 50,000 hours
Housing	Die Cast Aluminum
Operating Temperature	-40°F to 122°F (-40°C to 50°C)
Operating Voltage	90-135VAC / 200-300VAC
Dimming	ELV, TRIAC
Fixture Connections	2 Conductor, Bare Wire Leads
Rating	IP 66, Wet Location
Warranty	5 Years
Weight	6 lbs (2.7 kg)
Dimensions	W 9.6" x H 13.9" x D 5.9" (245 mm x 221 mm x 149.5mm)

Certifications



DIMENSIONS



DynaFlood HO

Client:	
Project:	
Type:	
Order Code:	
Quantity:	

ORDER CODES *special order

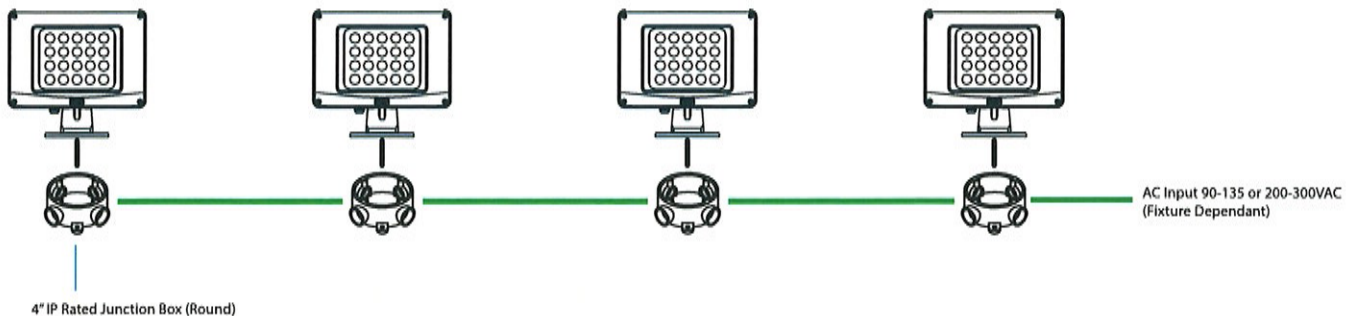
DFB.1 1.A

Housing	Beam	Color	Input Voltage
			U - 90-135VAC
			E - 200-300VAC
	A - 2700K*		
	B - 3000K		
	D - 3500K*		
	E - 4000K		
	B - 7°		
	E - 20°		
	H - 40°		
	P - 10° x 60°		
	W - 70°		
	1 - Black*		
	2 - White*		
	4 - Grey		

RELATED COMPONENTS

TBD	Dyna Flood Extender Bar 6"
TBD	Dyna Flood Extender Bar 12"
TBD	Dyna Flood Extender Bar 36"

WIRING





DynaGraze Exterior

Client:	
Project:	
Type:	
Order Code:	
Quantity:	



The **DynaGraze Exterior** is a high power, white LED, outdoor linear fixture. Available in 1' and 4' sections, it offers smooth linear dimming with ELV modules and 1-100% with most commercially available TRIAC dimmer. Featuring class-leading output, robust housing, LSF filter options, and a glare shield, it is the perfect option for any structure that calls for outdoor linear grazing

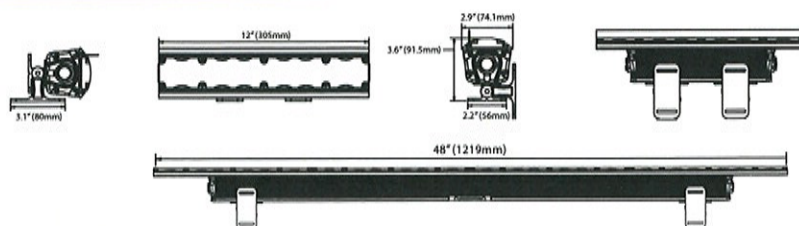
SPECIFICATIONS

Color Temperature	2,700K, 3000K, 3500K, 4000K
Beam Angle	10°, 40°, 10° x 60°, 30° x 60°
Max Fixture Runs	40' @ 120VAC / 80' @ 240VAC+
Power Consumption	20w (1') / 80w (4')
Total Lumens	834 (1') @ 2700k - (10x60) / 4,570 (4') @ 4000k - (30x60)
Efficacy (lm/W)	34 @ 2700k / 38 @ 3000k, 41 @ 3500k, 50 @ 4000k
CRI	87 @ 4000K
Lumen Maintenance	70% @ 50,000 Hours
Finish	Anodized Brushed Aluminum
Housing	Aluminum; Polycarbonate Lens
Operating & Storage Temp	-40°F to 122°F (-40°C to 50°C)
Operating Voltage	95-130VAC, 200-300VAC
Dimming	ELV or TRIAC
Fixture Connectors	Integral, 3 Pin Male & Female Connector
Rating	IP 66, Wet Location
Warranty	3 Years
Weight	1' 3 lbs (1.4 kg) 4' 12 lbs (5.4 kg)
Dimensions	W 2.9" x H 3.6" x L 12" / 48" (74.1 mm x 91.5 mm x 305 mm / 1,220 mm)

Certifications



DIMENSIONS



DynaGraze Exterior

Client:	
Project:	
Type:	
Order Code:	
Quantity:	

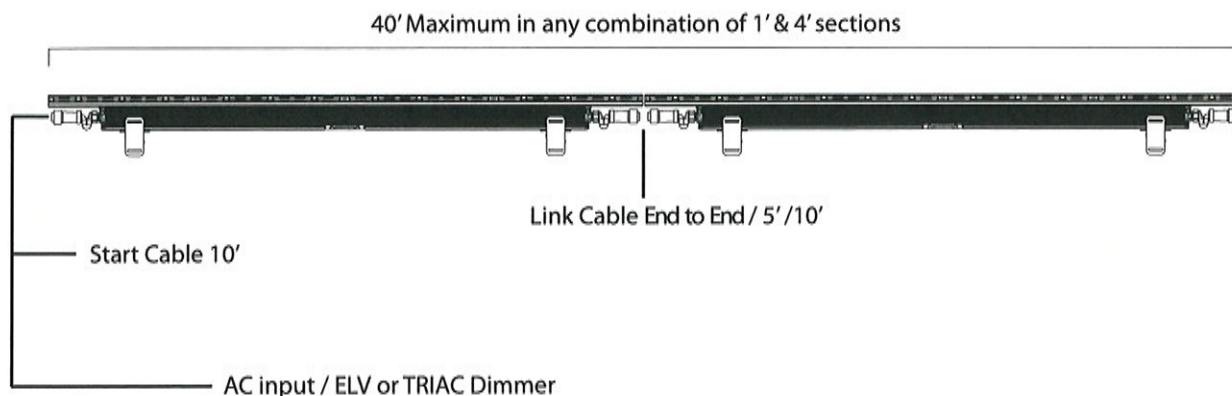
ORDER CODES

DGB . 141 .	U
LENGTH	COLOR
A - 1'	A - 2700K
D - 4'	B - 3000K
	D - 3500K
	E - 4000K
BEAM	
	B - 10°
	H - 40°
	P - 10° x 60°
	Q - 30° x 60°

RELATED COMPONENTS

CA-CBF-03050	Start Cable for DynaGraze Exterior 10'
CA-CBL-00000	Link Cable for DynaGraze Exterior, End to End
CA-CBL-00305	Link Cable for DynaGraze Exterior, 1'
CA-CBL-00150	Link Cable for DynaGraze Exterior 5'
CA-CBL-03050	Link Cable for DynaGraze Exterior 10'
TBD	Extender Bar for DynaGraze Exterior, 6"
TBD	Extender Bar for DynaGraze Exterior 12"
TBD	Extender Bar for DynaGraze Exterior 36"

WIRING





Flex II HO

Client:	
Project:	
Type:	
Order Code:	
Quantity:	



Flex II HO is a thin and flexible LED circuit strip, mounted inside a silicone, weatherproof housing. It can be cut every two inches to create the exact length needed for your specific application. The combination of its high output and low profile allows for a wide variety of cove, millwork, signage, and many other applications.

SPECIFICATIONS

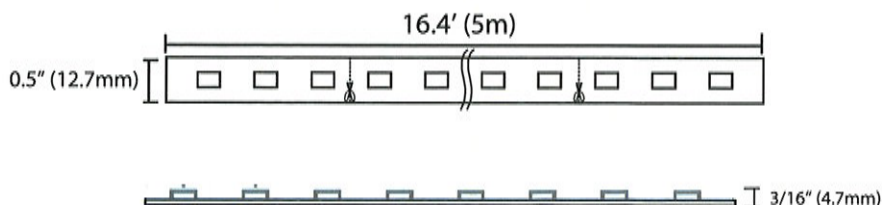
Color Temperature	2700K, 3000K, 4000K, 6000K
Beam Angle	120°
Max Fixture Runs	16.4 ft, 5m (1 Spool)
Power Consumption	50W / 3W Per Foot
Lumens Per Foot	127.8 @ 3000K, 134.1 @ 6000K
Efficacy (lm/W)	42.6 @ 3000K, 44.7 @ 6000K
CRI	67 @ 3000K, 81 @ 6000K
Cut & Solder Joints	Located Every 2"
Housing	Flexible Silicone Jacket
Operating Temperature	-40°F to 122°F (-40°C to 50°C)
Operating Voltage	12VDC
Dimming	TRIAC via M Series Transformers + Compatible LVM Dimmer
Fixture Connectors	5mm Plug With Bare Wire Adaptor Included
Rating	IP 68, Wet Location / Submersible Up To 3' (1m)
Warranty	3 Years
Weight	1 lbs (0.5 kg)
Dimensions	W 0.5" x H 0.18" x L 16.4' (12.7 mm x 4.7 mm x 5000mm)

Certifications



CE RoHS

DIMENSIONS



Client:	
Project:	
Type:	
Order Code:	
Quantity:	

ORDER CODES

FLEX2H : Flex II High Output 16.4 ft (5m) Spool

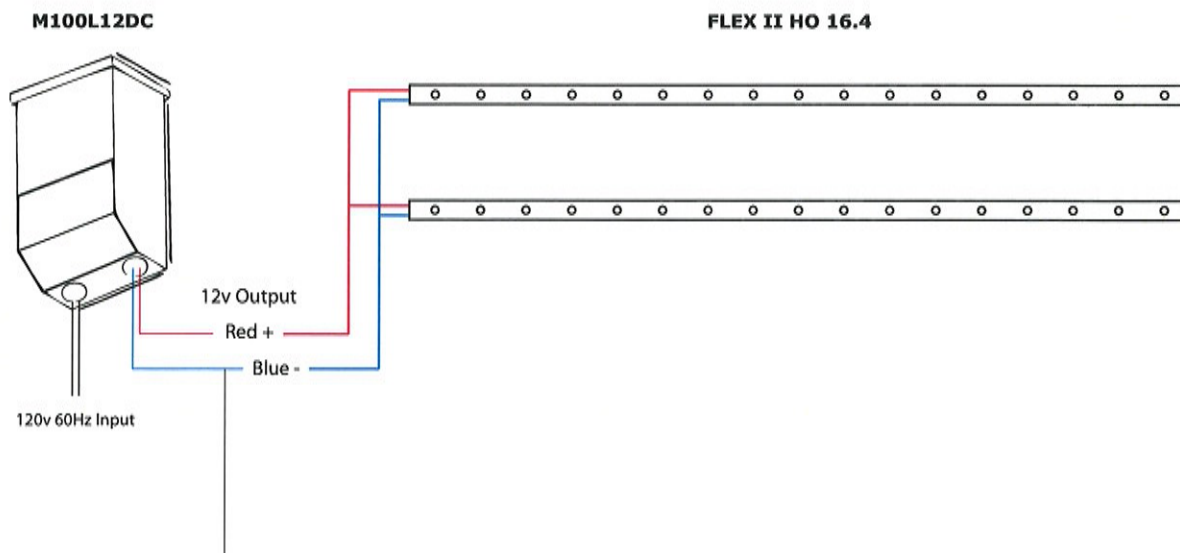
- 2 - 2700K
- 3 - 3000K
- 4 - 4000K
- 6 - 6000K

RELATED COMPONENTS

M60L12DC	12VDC 60W Dimmable Transformer, 120V AC Input / 1 Spool Maximum
M100L12DC	12VDC 100W Dimmable Transformer, 120V AC Input / 2 Spool Maximum
M150L12DC	12VDC 150W Dimmable Transformer, 120V AC Input / 3 Spool Maximum
FLX999	Aluminum Flex Channel 4'

Compatible dimmer list for M Series transformers can be found at www.acclaimlighting.com

WIRING (M Series Dimmable Transformers)



Maximum 25' with 18/2 solid cable or higher, to be provided by others.