 ST. CHARLES <small>S I N C E 1 8 3 4</small>	AGENDA ITEM EXECUTIVE SUMMARY					
	Title:		EAB Control Efforts – Information Only			
	Presenter:					
<i>Please check appropriate box:</i>						
	Government Operations		X		Government Services 09.23.13	
	Planning & Development				City Council	
	Public Hearing					
Estimated Cost:			Budgeted:	YES		NO
If NO, please explain how item will be funded:						
Executive Summary:						
<p>This is a monthly update on EAB activities for September 2013. This update provides detailed information about the EAB infestation including EAB confirmation status and ash trees proposed to be removed beginning in the month of October, 2013.</p>						
Attachments: <i>(please list)</i>						
Summary Sheet						
Recommendation / Suggested Action <i>(briefly explain):</i>						
For information only.						
For office use only:		Agenda Item Number: 3.d				

Emerald Ash Borer Monthly Summary Sheet

September 2013

The Emerald Ash Borer Monthly Summary Sheet is prepared each month by the Public Services Staff for each Government Services Meeting. This summary documents the Spread of EAB (Confirmed Trees), Control Measures (Removed & Treated Trees) and Planting Efforts (New Trees). Unless noted otherwise, all data listed below reflects One (1) month starting on the 1st and ending on the last day of each month. EAB Maps and an address list of Proposed Removals will be attached to this report.

Confirmed Trees

- As of June 1, 2012, all Public Ash trees in the City of St. Charles have been reviewed for EAB. Initially, 1,000 trees were confirmed with EAB in phase one of the current EAB program and have been removed as of the end of 2012. Moving forward, 1,000 trees confirmed with EAB in phase two have been removed as of the end of June, 2013. Phase three began with the removals scheduled for May, 2013.

Proposed Tree Removals

- We are proposing to remove 133 Ash Trees starting in the month of October, 2013, including:
 1. 0 in the NW Quadrant
 2. 0 in the SW Quadrant
 3. 51 in the NE Quadrant
 4. 65 in the SE Quadrant
 5. 17 in the FW Quadrant

Treating & Planting Notes

- Fall planting of 757 tree sites is currently under review. Graf Tree Care will be assisting with the placement and species selection again this fall. Planting will begin early to mid-October, weather permitting.

Additional Comments

None

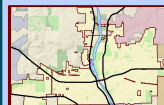
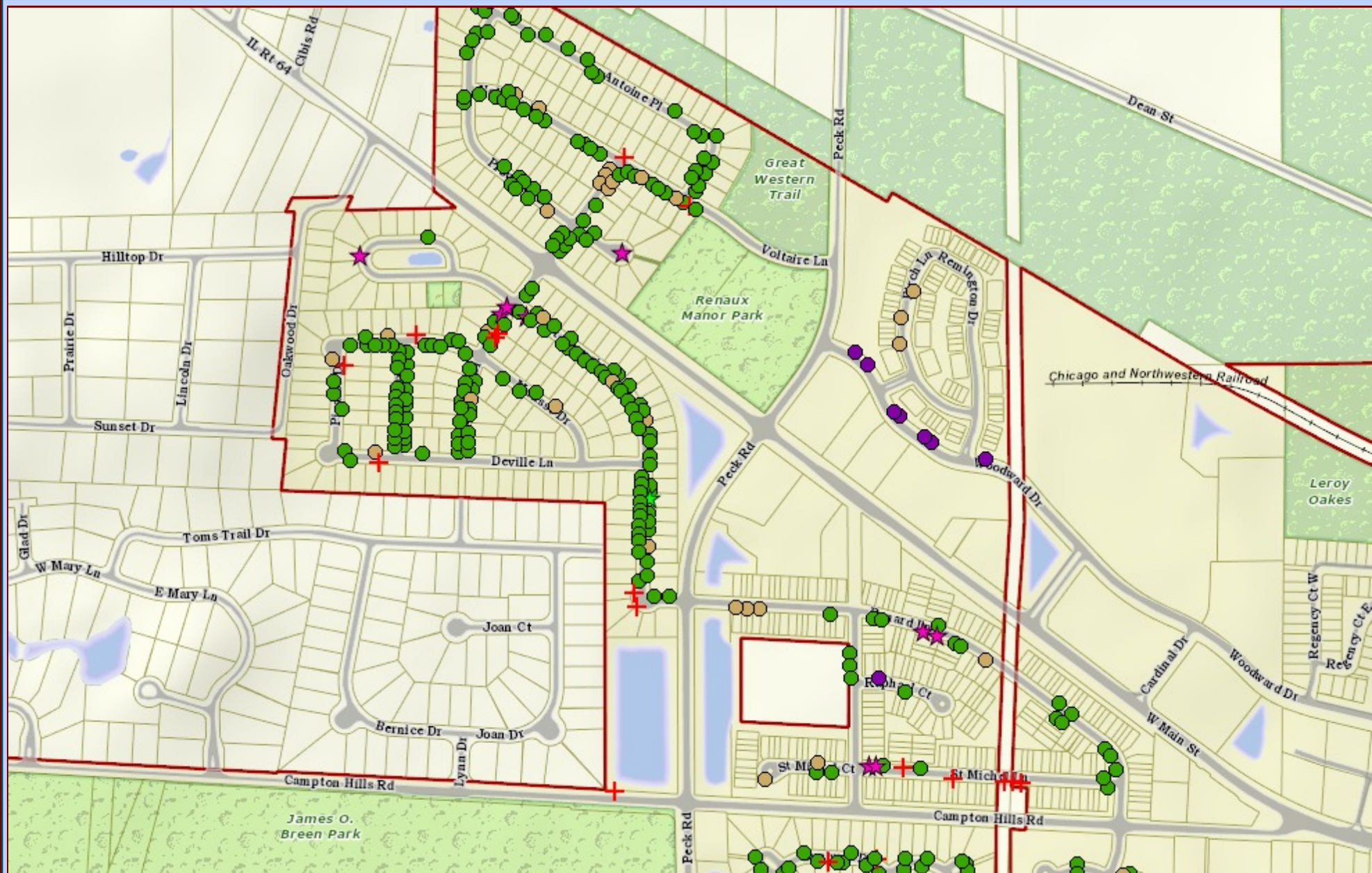


City of St. Charles, Illinois

Two East Main Street St. Charles, IL 60174-1984
Phone: 630-377-4400 Fax: 630-377-4440 - www.stcharlesil.gov

Precision GIS

RAYMOND ROGINA Mayor
MARK KOENEN City Administrator



Data Source:
City of St. Charles, Illinois
Kane County, Illinois
DuPage County, Illinois
Projection: Transverse Mercator
Coordinate System: Illinois State Plane East
North American Datum 1983
Printed on: September 9, 2013 12:31 PM



0 319 637 Feet

EAB Proposed Removal - FW Upper Area 1
September 23, 2013

This work was created for planning purposes only and is provided as is, without warranty of any kind, either expressed or implied. The information represented may contain proprietary and confidential property of the City of St. Charles, Illinois. Under United States Copyright protection laws you may not use, reproduce, or distribute any part of this document without prior written permission. To obtain written permission please contact the City of St. Charles at Two East Main Street, St. Charles, IL 60174.
Powered by Precision GIS

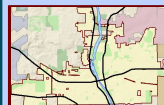
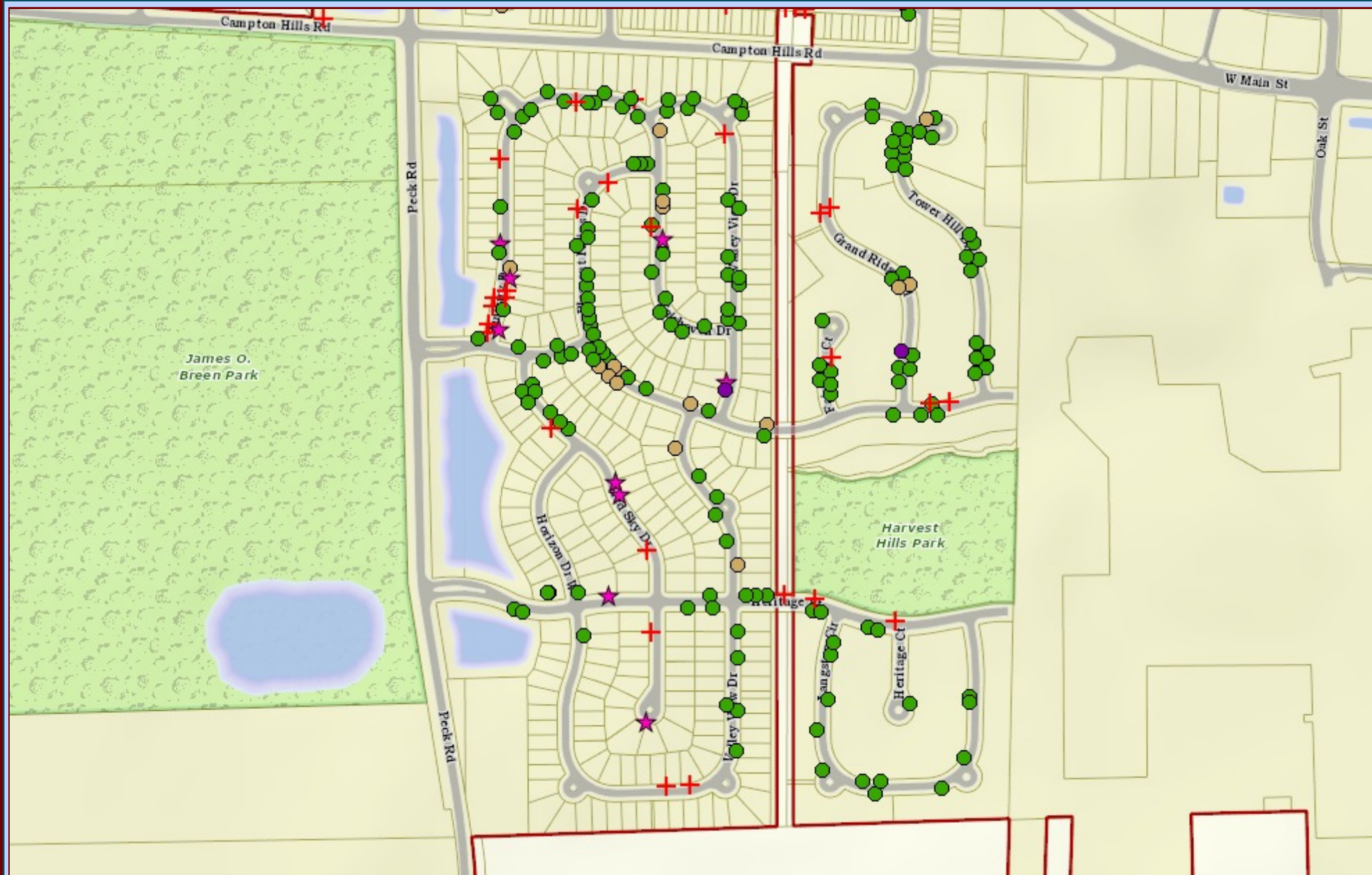


City of St. Charles, Illinois

Two East Main Street St. Charles, IL 60174-1984
Phone: 630-377-4400 Fax: 630-377-4440 - www.stcharlesil.gov

Precision GIS

RAYMOND ROGINA Mayor
MARK KOENEN City Administrator



Data Source:
City of St. Charles, Illinois
Kane County, Illinois
DuPage County, Illinois
Projection: Transverse Mercator
Coordinate System: Illinois State Plane East
North American Datum 1983
Printed on: September 9, 2013 12:33 PM



0 269 538 Feet

EAB Proposed Removal - FW Lower Area 2
September 23, 2013

This work was created for planning purposes only and is provided as is, without warranty of any kind, either expressed or implied. The information represented may contain proprietary and confidential property of the City of St. Charles, Illinois, Under United States Copyright protection laws you may not use, reproduce, or distribute any part of this document without prior written permission. To obtain written permission please contact the City of St. Charles at Two East Main Street, St. Charles, IL 60174.
Powered by Precision GIS

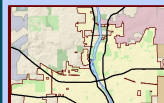
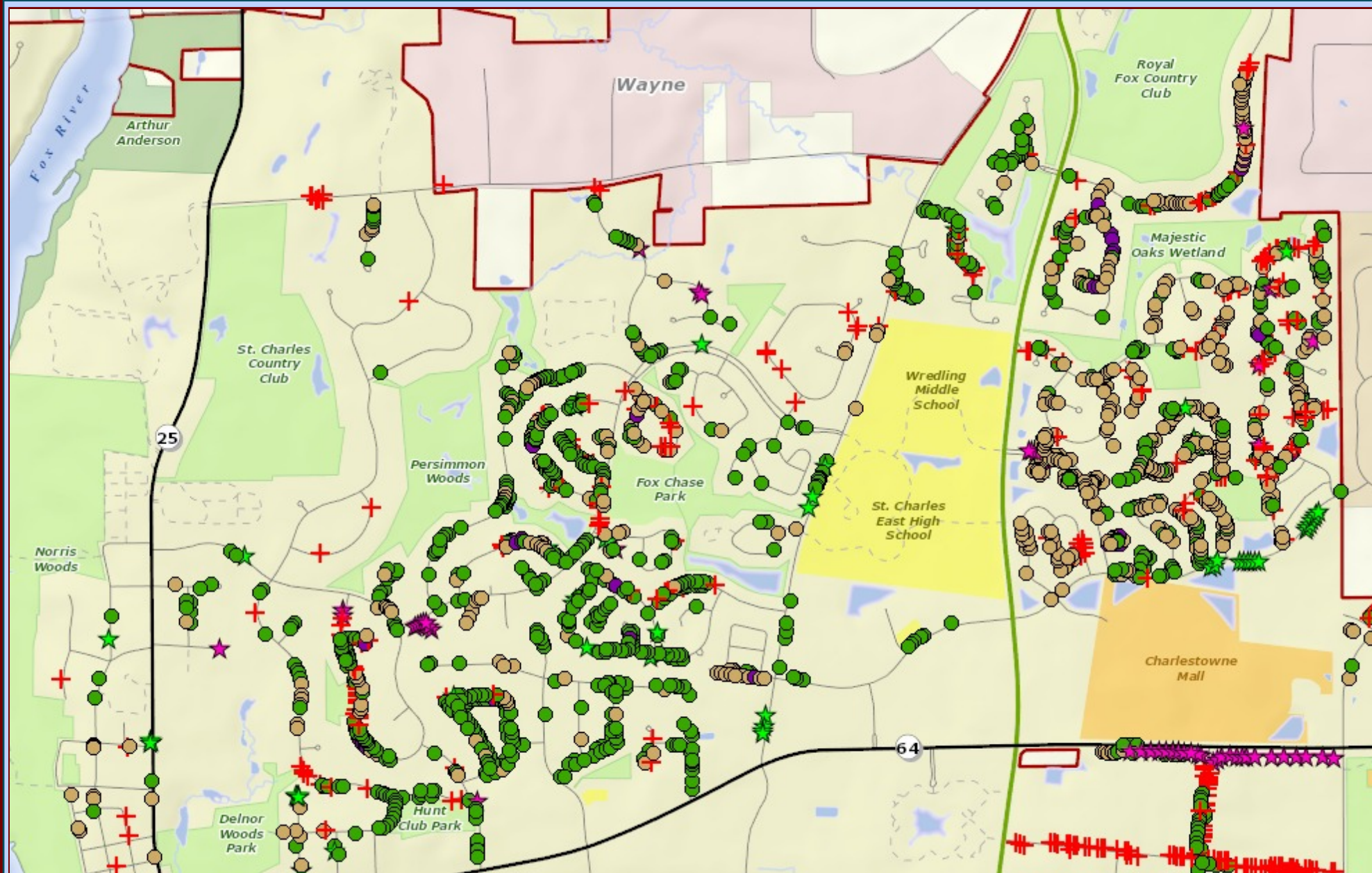


City of St. Charles, Illinois

Two East Main Street St. Charles, IL 60174-1984
Phone: 630-377-4400 Fax: 630-377-4440 - www.stcharlesil.gov

Precision GIS

RAYMOND ROGINA Mayor
MARK KOENEN City Administrator



Data Source:
City of St. Charles, Illinois
Kane County, Illinois
DuPage County, Illinois
Projection: Transverse Mercator
Coordinate System: Illinois State Plane East
North American Datum 1983
Printed on: September 9, 2013 12:35 PM



0 719 1,439 Feet

EAB Proposed Removal - NE Area 3
September 23, 2013

This work was created for planning purposes only and is provided as is, without warranty of any kind, either expressed or implied. The information represented may contain proprietary and confidential property of the City of St. Charles, Illinois. Under United States Copyright protection laws you may not use, reproduce, or distribute any part of this document without prior written permission. To obtain written permission please contact the City of St. Charles at Two East Main Street, St. Charles, IL 60174.
Powered by Precision GIS

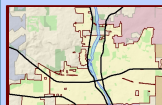
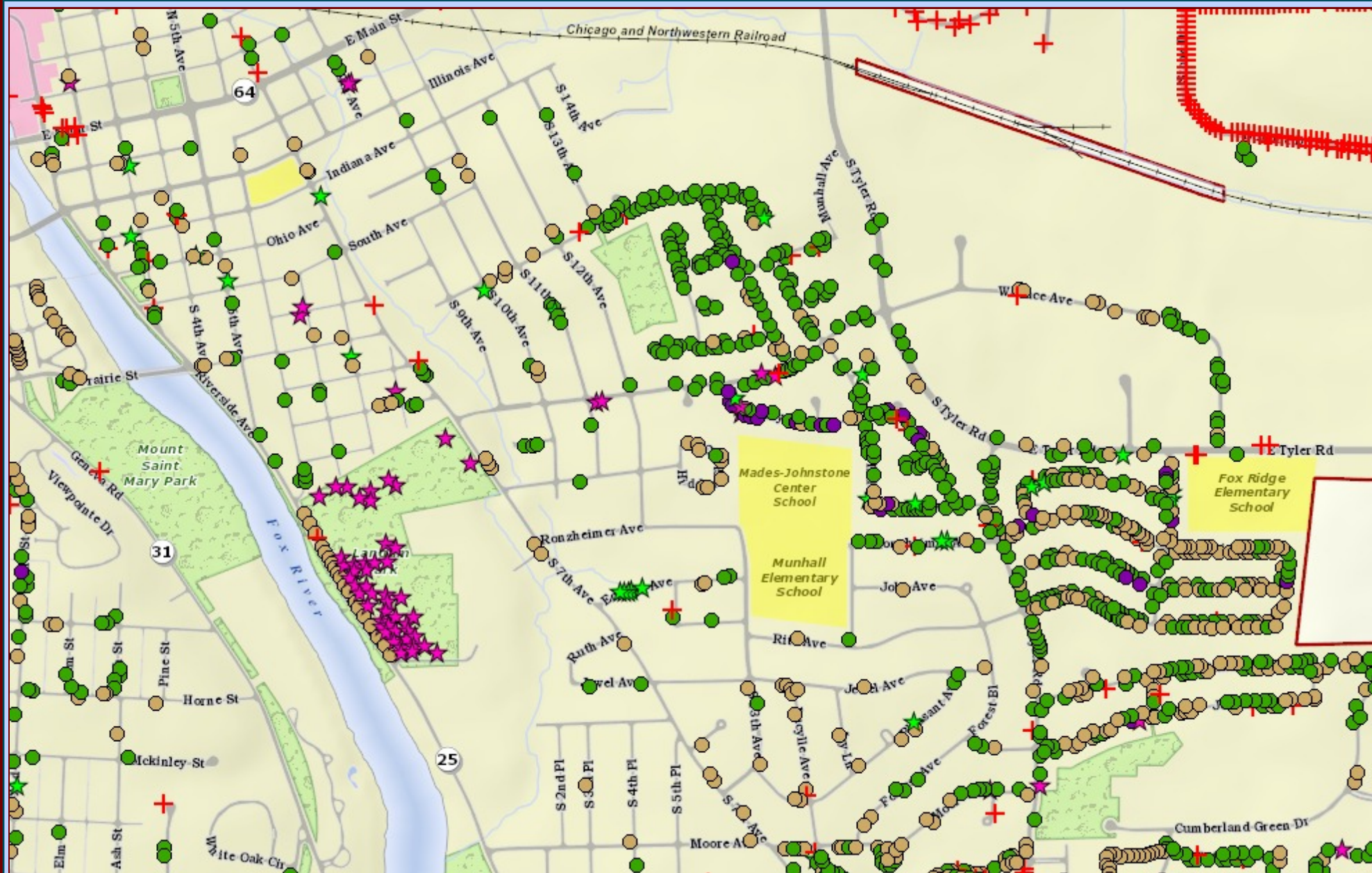


City of St. Charles, Illinois

Two East Main Street St. Charles, IL 60174-1984
Phone: 630-377-4400 Fax: 630-377-4440 - www.stcharlesil.gov

Precision GIS

RAYMOND ROGINA Mayor
MARK KOENEN City Administrator



Data Source:
City of St. Charles, Illinois
Kane County, Illinois
DuPage County, Illinois
Projection: Transverse Mercator
Coordinate System: Illinois State Plane East
North American Datum 1983
Printed on: September 9, 2013 12:37 PM



0 471 941 Feet

EAB Proposed Removal - SE Area 4
September 23, 2013

This work was created for planning purposes only and is provided as is, without warranty of any kind, either expressed or implied. The information represented may contain proprietary and confidential property of the City of St. Charles, Illinois. Under United States Copyright protection laws you may not use, reproduce, or distribute any part of this document without prior written permission. To obtain written permission please contact the City of St. Charles at Two East Main Street, St. Charles, IL 60174.
Powered by Precision GIS