



ST. CHARLES
SINCE 1834

AGENDA ITEM EXECUTIVE SUMMARY

Title: Recommendation to Approve Updates to the City Code to Require Resident Only Parking on School Days in the Area Surrounding Gray Street

Presenter: Chief Lamkin

Please check appropriate box:

<input checked="" type="checkbox"/>	Government Operations	X	Government Services 10.28.13
<input type="checkbox"/>	Planning & Development		City Council
<input type="checkbox"/>	Public Hearing		

Estimated Cost:	\$N/A	Budgeted:	YES	<input type="checkbox"/>	NO	<input type="checkbox"/>
-----------------	-------	-----------	-----	--------------------------	----	--------------------------

If NO, please explain how item will be funded:

Executive Summary:

The existing city code, under 10.40.043 (C) No Parking on School Days, restricts parking during the day, as outlined below from current:

Between the hours of 9:00 a.m. to 1:00 p.m. on all streets inside the area bordered by and including Gray Street on the south from 4th Street to 12th Street, 4th Street on the east from Gray Street to Fellows, Fellows Street on the north from 4th Street to 12th Street and 12th Street on the west from Fellows to Gray.

The language is requested to be deleted from this section of the code and inserted in section 10.40.044 Residential Parking Only on School Days.

This change will allow for residents to use the streets where they live on school days and, in the event they should have extra visitors, they can contact the Police Department in advance to avoid unnecessary enforcement. This change is intended to still allow for restrictions, but minimize the impact to those residents living in the area.

Attachments: *(please list)*

Ordinance; Map

Recommendation / Suggested Action *(briefly explain):*

Recommendation to approve updates to the City Code to Require Resident Only Parking on School Days in the Area Surrounding Gray Street.

For office use only: Agenda Item Number: 5.d

City of St. Charles, Illinois

ORDINANCE NO. 2013-M-_____

An Ordinance amending title 10 "Vehicles and Traffic", Section 10.40 "Stopping, Standing and Parking" of the St. Charles Municipal Code

BE IT ORDAINED BY THE CITY COUNCIL OF THE CITY OF ST. CHARLES, KANE AND DUPAGE COUNTIES, ILLINOIS, AS FOLLOWS:

SECTION ONE: That Title 10 "Vehicles and Traffic", Section 10.40 "Stopping, Standing and Parking", of the St. Charles Municipal Code, be and is hereby amended as follows:

“10.40.044 Residential parking only on school days.

- 15. Between the hours of 9:00 a.m. to 1:00 p.m. on all streets inside the area bordered by and including Gray Street on the south from 4th Street to 12th Street, 4th Street on the east from Gray Street to Fellows, Fellows Street on the north from 4th Street to 12th Street and 12th Street on the west from Fellows to Gray.”

SECTION TWO: That, after the adoption and approval hereof, this Ordinance shall (i) be printed or published in book or pamphlet form, published by the authority of the City Council of the City of St. Charles, or (ii) within thirty (30) days after the adoption and approval hereof, be published in a newspaper published in and with a general circulation within the City of St. Charles.

SECTION THREE: This Ordinance shall be in full force and effect ten (10) days from and after its passage by a vote of the majority of the corporate authorities now holding office, approval and publication in the manner provided by law.

PRESENTED to the City Council of the City of St. Charles, Illinois, this ___ day of _____, 2013.

PASSED by the City Council of the City of St. Charles, Illinois this ___ day of _____, 2013.

APPROVED by the Mayor of the City of St. Charles, Illinois, this ___ day of _____, 2013.

Raymond P. Rogina, Mayor

ATTEST:

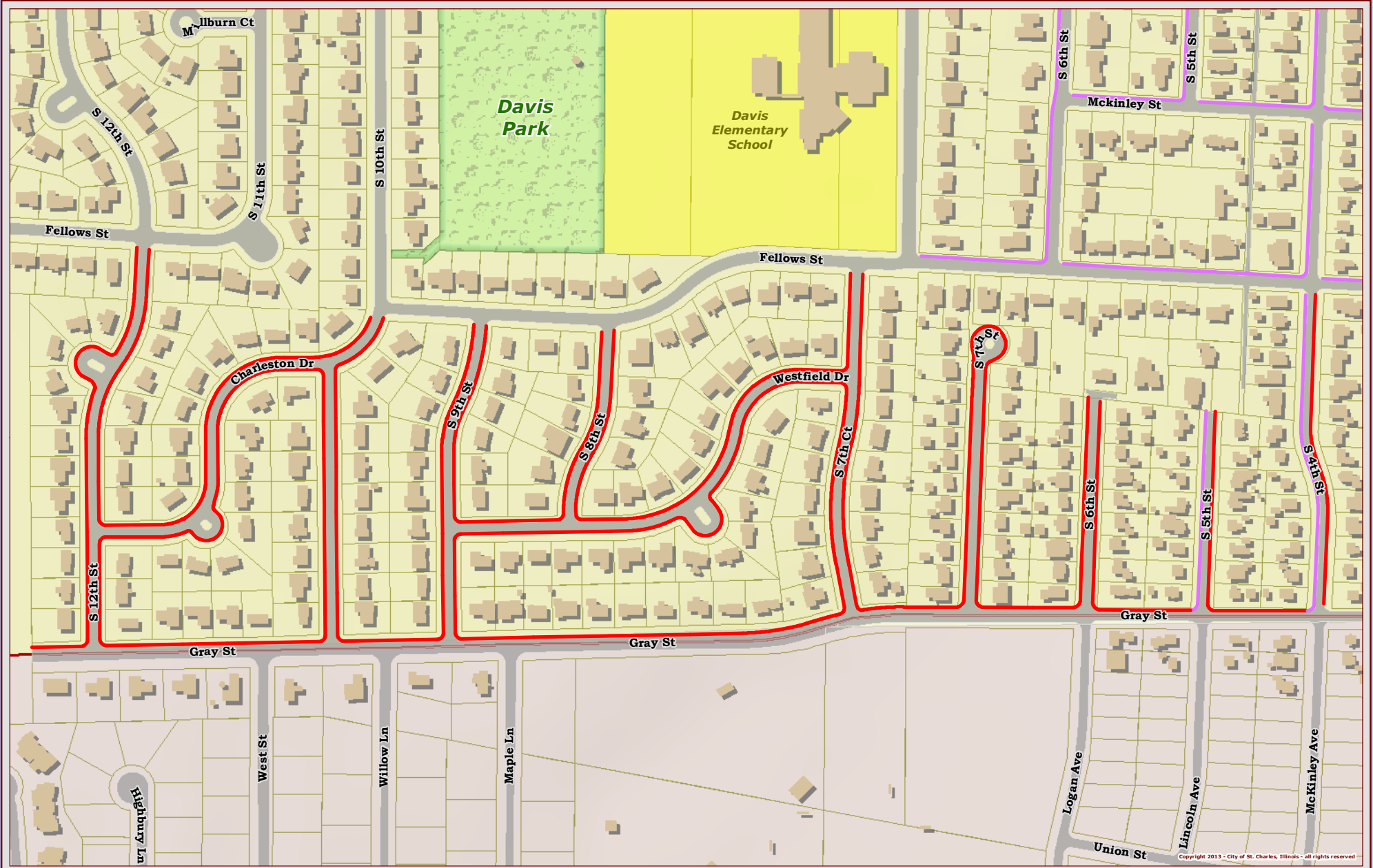
Nancy Garrison
City Clerk

COUNCIL VOTE:

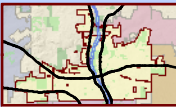
Ayes : _____
Nays : _____
Absent : _____



Gray Street Parking Restrictions



Copyright 2013 - City of St. Charles, Illinois - all rights reserved



Publication Date:
October 10, 2013
Data Source:
City of St. Charles, Illinois
Deane County, Illinois
Projection: Transverse Mercator
Coordinate System: Illinois State Plane East
North American Datum 1983
TIN #: 131007182702027



Parking Code Designation

- Residential Parking Only on School Days
- No Parking This Side of Street

This work was created for planning purposes only and is provided as is, without warranty of any kind, either expressed or implied. The information represented may contain proprietary and confidential property of the City of St. Charles, Illinois. Under United States Copyright protection laws you may not use, reproduce, or distribute any part of this document without prior written permission. To obtain written permission please contact the City of St. Charles at Two East Main Street, St. Charles, IL 60174.