

 ST. CHARLES <small>S I N C E 1 8 3 4</small>	AGENDA ITEM EXECUTIVE SUMMARY												
	Title:		Discussion of North Municipal Parking Lot Proposed Memorial Dedication Layout										
	Presenter:		James Bernahl										
<i>Please check appropriate box:</i>													
	Government Operations		X		Government Services – 02.24.14								
	Planning & Development				City Council								
	Public Hearing												
<table border="1" style="width: 100%;"> <tr> <td>Estimated Cost:</td> <td>\$0</td> <td>Budgeted:</td> <td>YES</td> <td></td> <td>NO</td> <td></td> </tr> </table>							Estimated Cost:	\$0	Budgeted:	YES		NO	
Estimated Cost:	\$0	Budgeted:	YES		NO								
If NO, please explain how item will be funded:													
Executive Summary:													
<p>As City staff moves forward with the final design of the North Municipal Parking Lot staff will be seeking acceptance from the City Council for the proposed memorial dedications within the complex.</p> <p>Staff will be presenting an overview of the approved parking lot concept from 2010 along with an update on the status of the current design. In addition to the final design of the north municipal parking lot staff has been working closely with the River Corridor Group specifically to this group's recommendation for memorial dedications. Staff will be presenting these recommendations and will be seeking final acceptance and approval of these memorial dedications. Final acceptance of these memorial dedications will assist staff in completing the final design.</p>													
Attachments: <i>(please list)</i>													
Copy of Approved Concept Plan from 2010													
Recommendation / Suggested Action:													
Recommendation for acceptance from the Committee to approve the proposed memorial dedication layout.													
For office use only:		Agenda Item Number: 5.b											



Municipal Parking Lot Redesign Project

City of St. Charles

Concept Plan



LEGEND

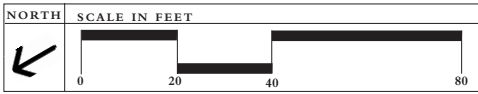
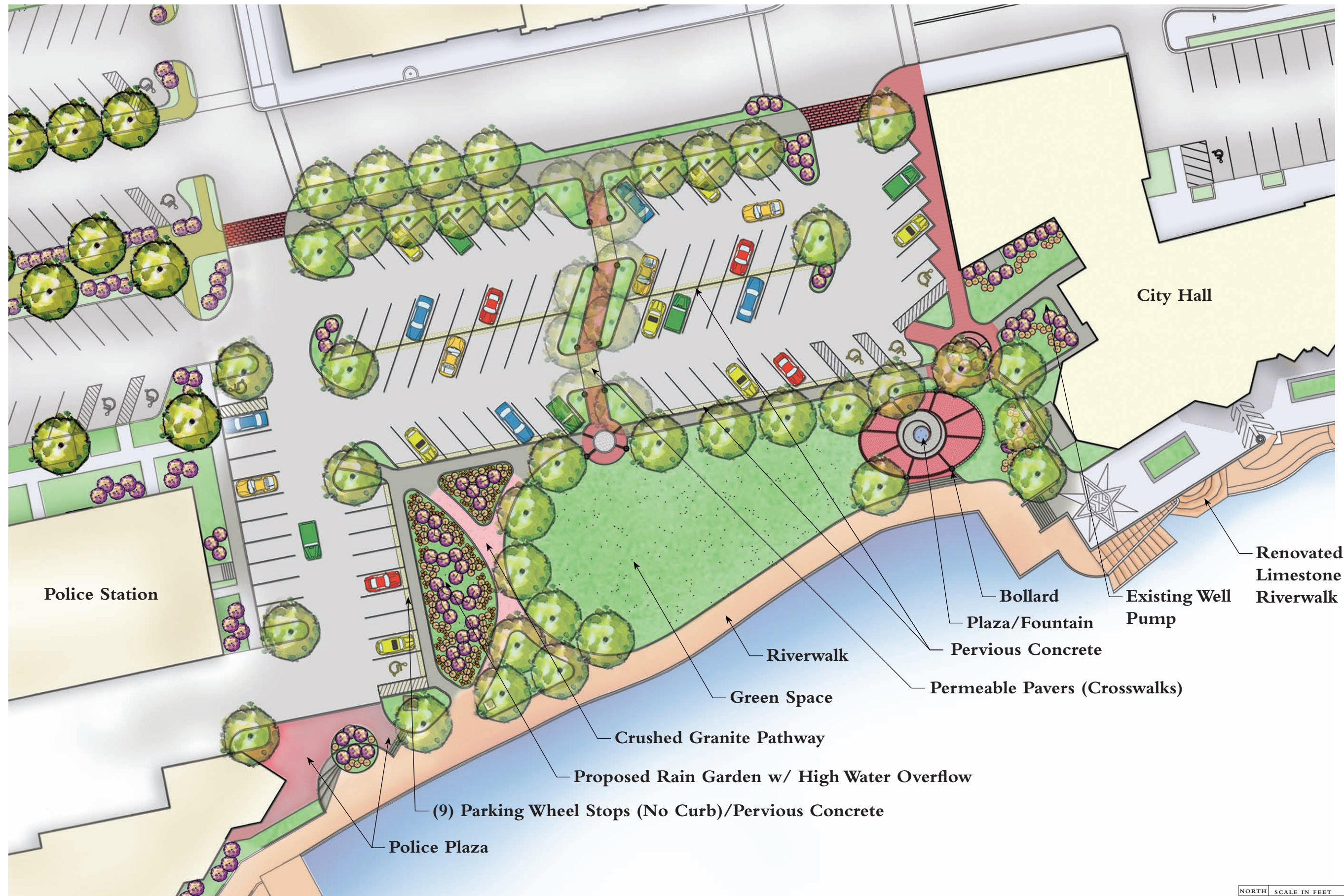
- A. Renovated Limestone River Wall
- B. Plaza/Fountain
- C. Green Space
- D. Crushed Granite Pathway
- E. Rain Garden
- F. Police Plaza
- G. Municipal Lot
- H. Bike Path



Municipal Parking Lot Redesign Project

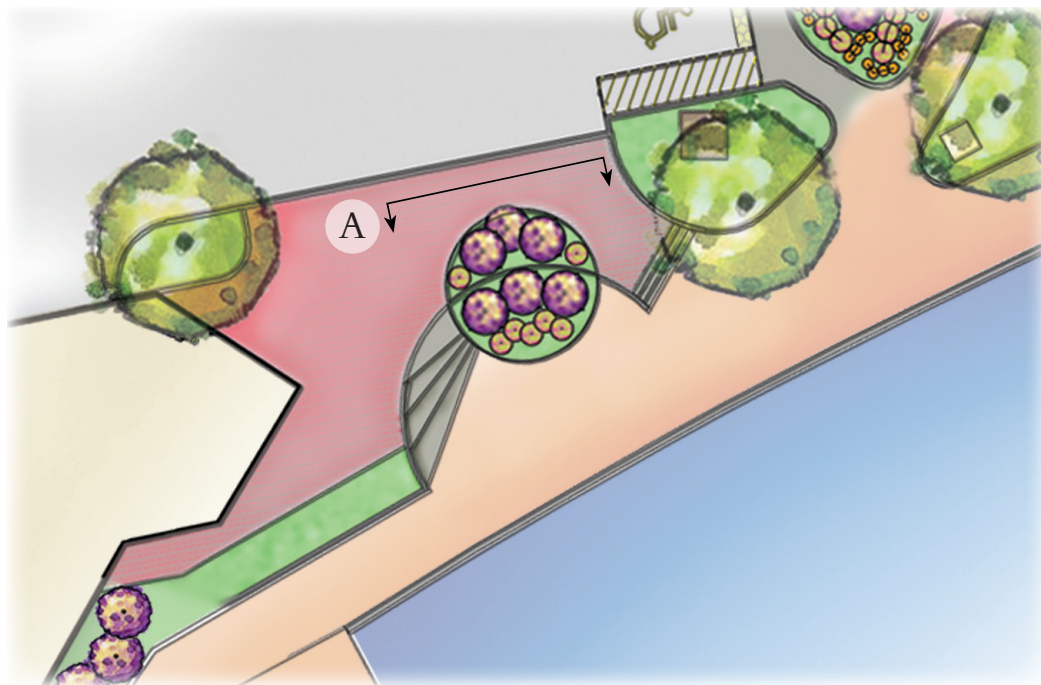
City of St. Charles

Municipal Lot - Concept Plan

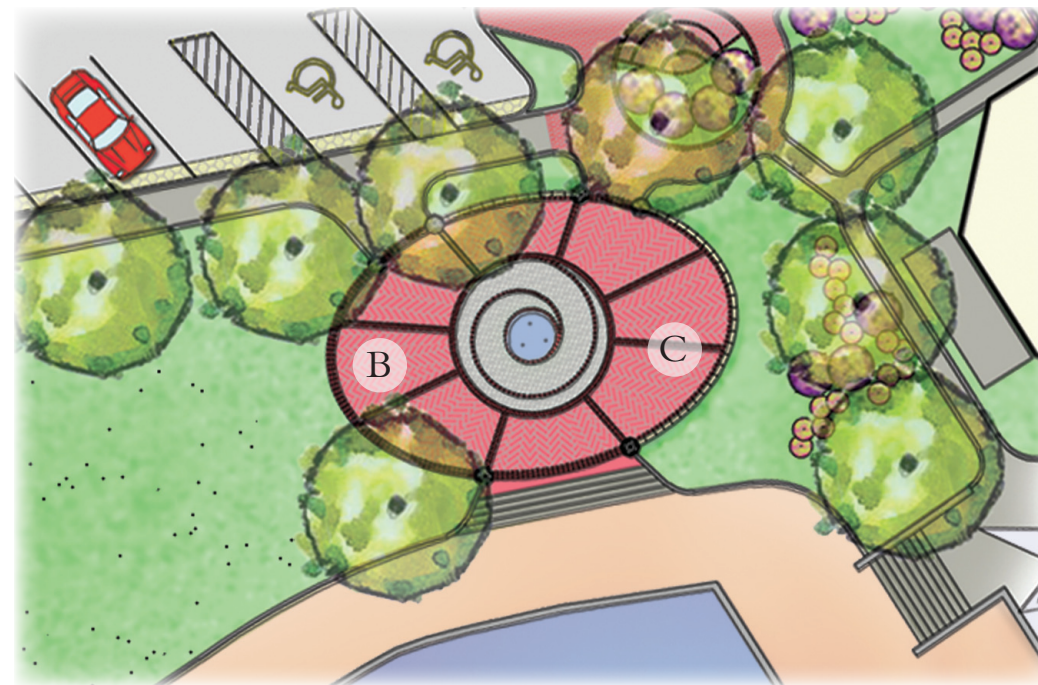


THOMPSON DYKE & ASSOCIATES

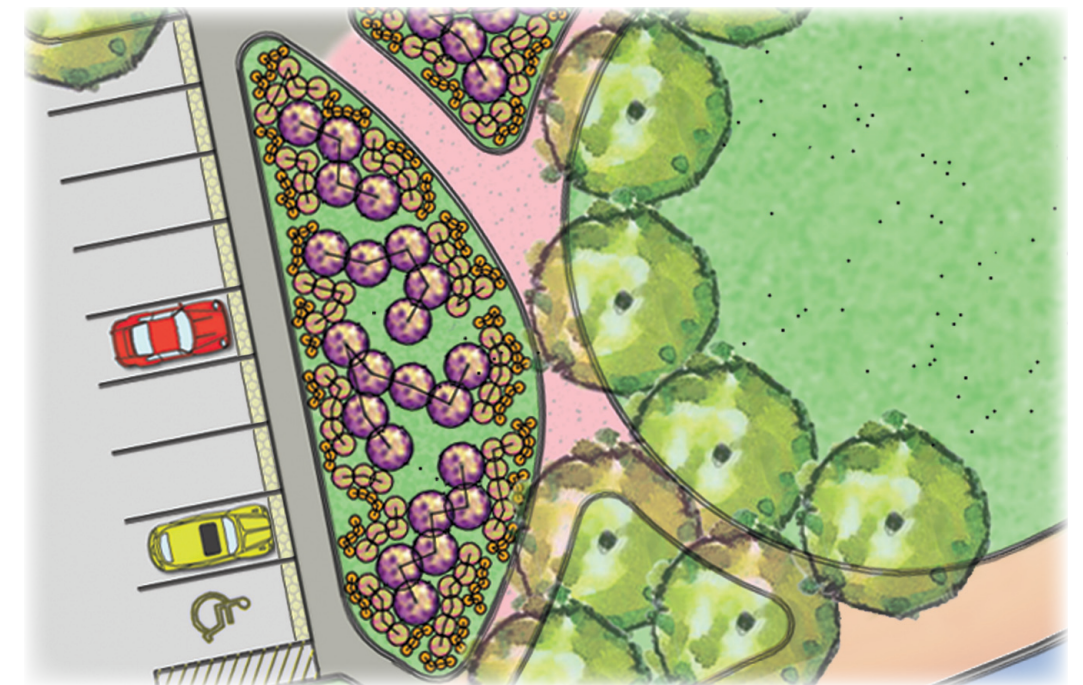
MARCH 2010



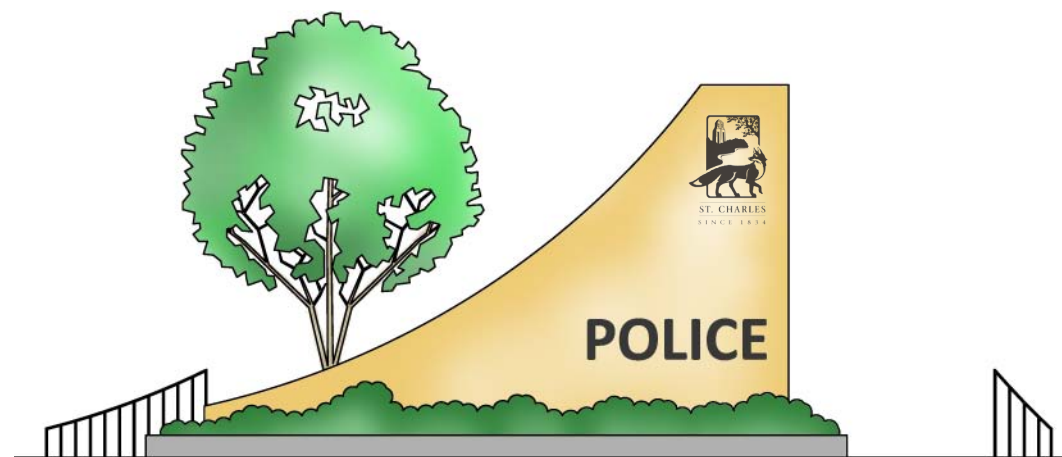
Police Plaza



City Hall Plaza



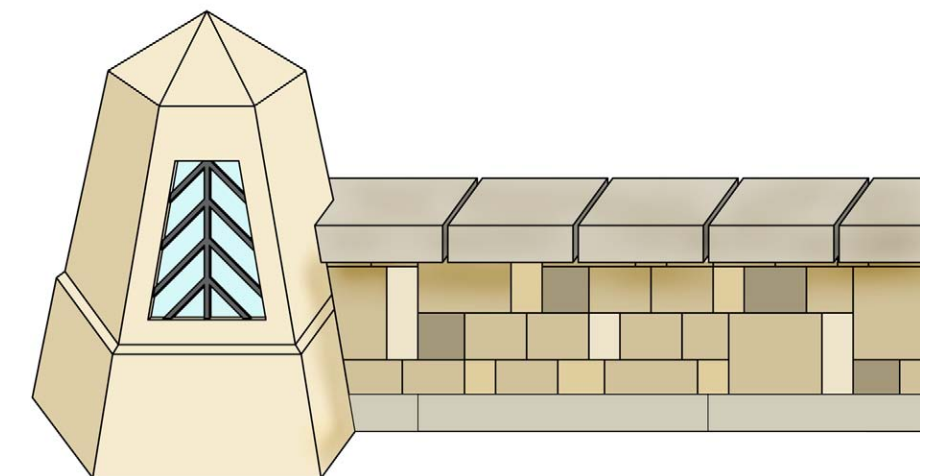
Proposed Rain Garden



A. Police Plaza Elevation



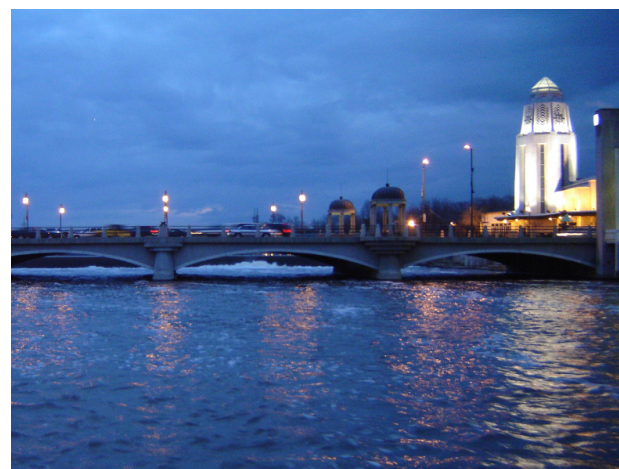
B., C. Paver Pattern Examples



Proposed Bollard with Seat Wall



Riverfront Wall



Fox River at Night



Clock Tower with Chevron Pattern



Existing Riverwalk



Existing CBD Planting Scheme

A Permeable Pavers



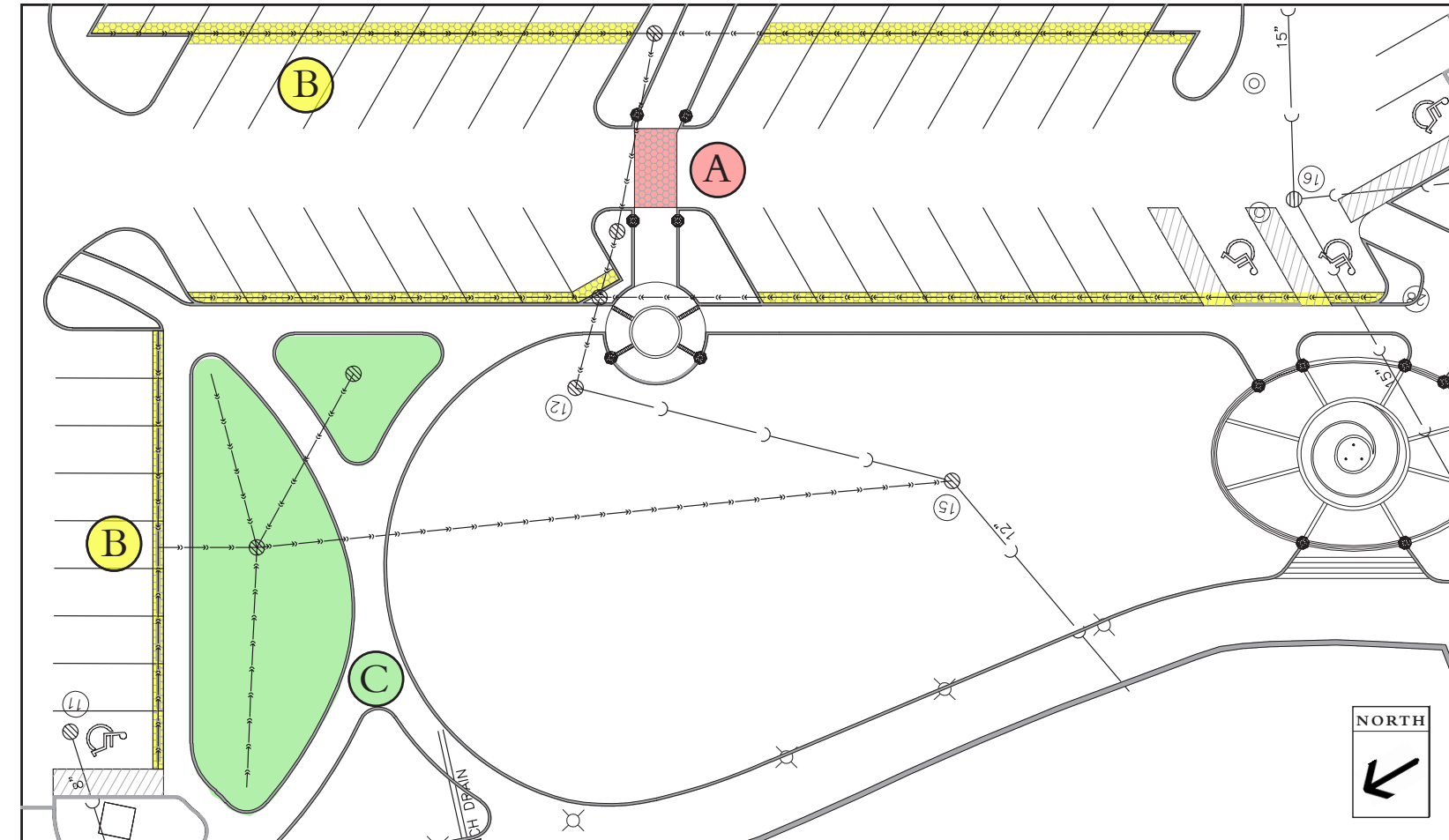
Installed Cost: \$10/s.f. (3x greater than traditional asphalt)
Traditional Asphalt/parking space: \$1,250
Permeable Pavers/ parking space: \$3,863

Maintenance: Sweep debris from paving and joints as needed. Biennially vacuum joints of sediment build up

Aesthetics: Variable colors and sizes available for flexibility of design

Benefits: Pavers offer the aesthetics of traditional pavers while reducing the number of storm sewer inlets required. Infiltration can decrease the volume of water entering storm sewer system and some patterns can be laid mechanically for faster installation.

Disadvantages: Larger spacing between pavers can cause some difficulty for a few pedestrians.



BMP Implementation Areas

B Pervious Concrete



Installed Cost: \$4/s.f. (10-20% more than traditional asphalt)
Traditional Concrete/parking space: \$1,250
Permeable Concrete/parking space: \$1,681

Maintenance: Debris and sediment needs to be removed and may need to be vacuumed semiannually.

Aesthetics: Looks like concrete

Benefits: Easy installation with the same equipment used as in traditional concrete applications. It is also more resistant to freeze-thaw cycles and may reduce the need for salt by 75%

Disadvantages: It can clog over time due to sediment build up in the pavement pore space and reduce permeability. It is not ideal for high traffic/high speed areas because it has a lower load bearing capacity. It also does not filter pollutants before infiltration.

C Rain Garden

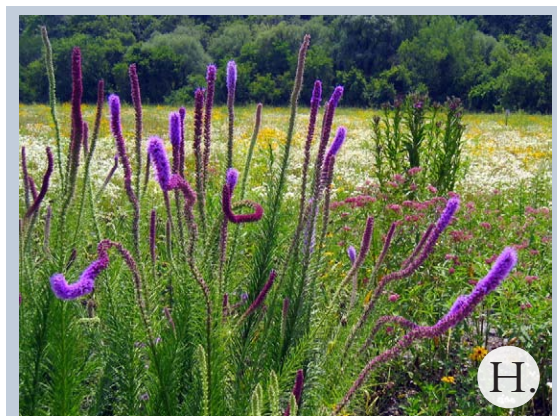
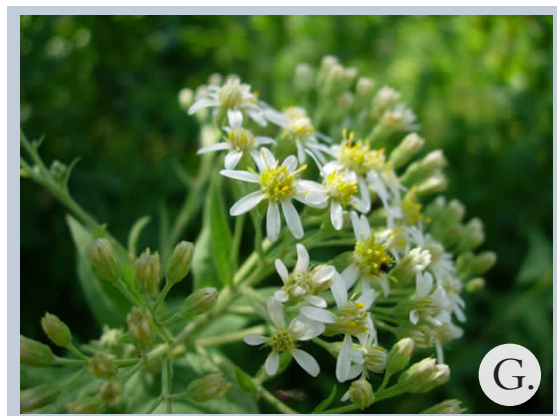


Installed Cost: Varies depending on size and materials used
Maintenance: Basic care is needed such as trimming, weeding, and mulching especially during the early years of plant establishment.

Aesthetics: Native plants can be used to brighten up sites and educate visitors.

Benefits: Rain gardens filter pollution in water runoff, recharge local groundwater, create natural wildlife habitats and remove standing water.

Disadvantages: Requires regular maintenance and can be an issue during extended periods of drought.



Common Name

Scientific Name

A. Astilbe

Astilbe chinensis

B. Black Eyed Susan

Rudbeckia subtomentosum

C. Broad Leaf Sedge

Carex platyphylla

D. Butterfly Weed

Asclepias tuberosa

E. Catmint

Nepeta

F. Little Bluestem

Schizachyrium scoparium

G. Prairie Aster

Symphotrichum turbinellum

H. Prairie Blazing Star

Liatris pycnostachya

I. Red Twig Dogwood

Cornus sericea



Common Name

- A. Aristocrat Pear
- B. Autumn Blaze Maple
- C. Cockspur Hawthorn
- D. Ginkgo
- E. Homestead Elm
- F. Skyline Honeylocust

Scientific Name

- Pyrus calleryana*
- Acer x freemannii* 'Autumn Blaze'
- Crataegus crus galli* var. *inermis*
- Ginkgo biloba*
- Ulmus x*
- Gleditsia triacanthos* 'inermis'