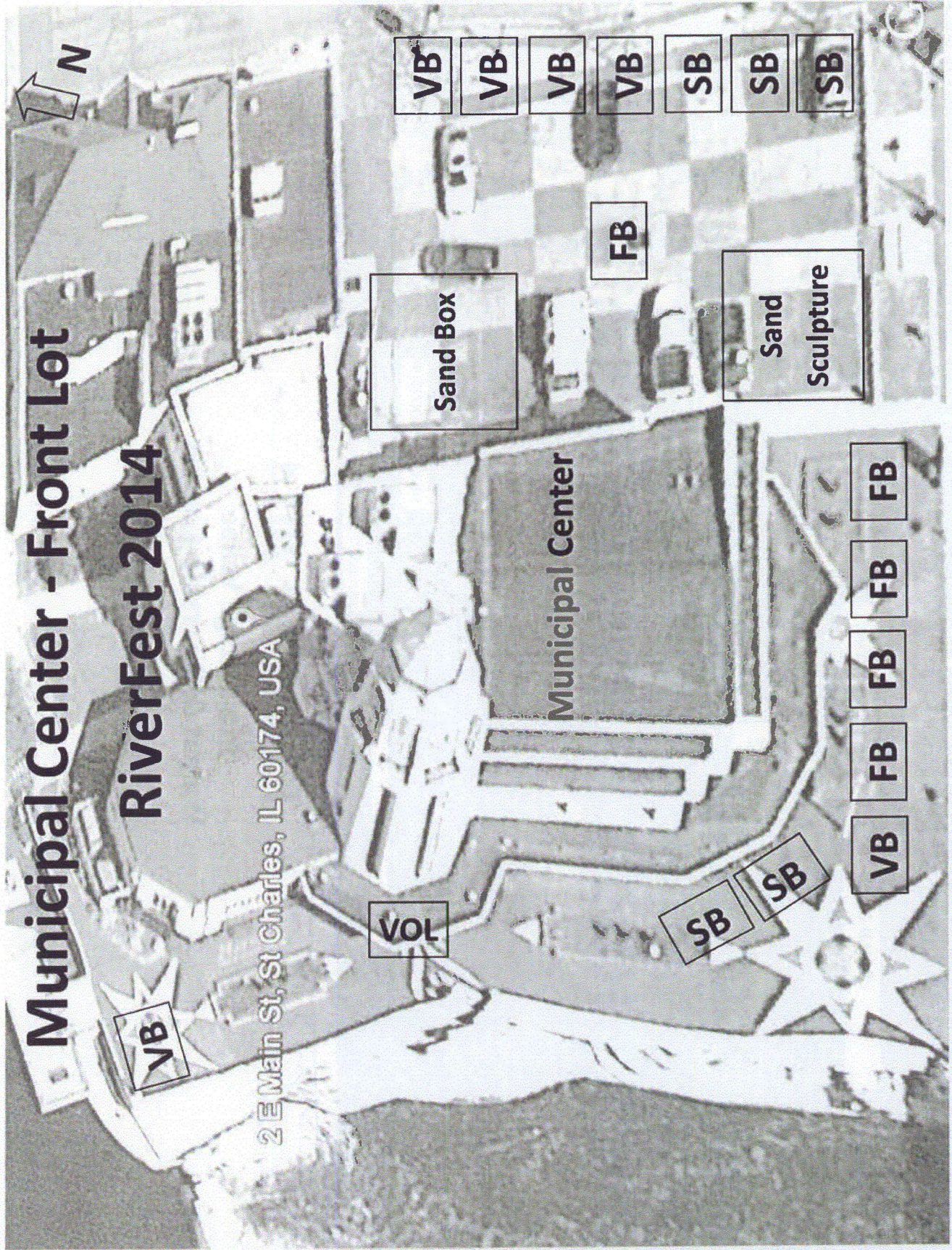
 ST. CHARLES <small>SINCE 1834</small>	AGENDA ITEM EXECUTIVE SUMMARY													
	Title:	Recommendation to Approve Street Closures, Use of Amplification Equipment and Class E-1 Liquor License for the Annual Pride of the Fox Riverfest												
	Presenter:	Interim Chief Huffman												
Please check appropriate box:														
	Government Operations	X	Government Services 04.28.14											
	Planning & Development		City Council											
	Public Hearing													
Estimated Cost:	\$24,878.75		Budgeted:	YES	X	NO								
If NO, please explain how item will be funded:														
Executive Summary:														
<p>The Pride of the Fox, Inc., sponsors of the 2014 River Fest event, are requesting a different layout for the main part of event this year. Noted from their complete detail are these items:</p> <ul style="list-style-type: none"> • 1st Street from W. Main St. to Illinois St. from Friday, June 6th at 4:00 a.m. until Sunday, June 8th at 10:00 p.m., or until everything is cleared, whichever is sooner. • The green space from the Fox River to 1st Street between W. Main St. and Illinois St. from Wednesday, June 4th at 4:00 a.m. until Monday, June 9th at 7:00 a.m., or until everything is cleared, whichever is sooner. • Use of the 1st Street Plaza from Thursday, June 5th at 4:00 a.m. until Monday, June 9th at 7:00 a.m. • Closure of the parking Lot "B" behind the River Rock House from Wednesday, June 4th at 5:00 p.m. until Monday, June 9th at 5:00 p.m., or until everything is cleared, whichever is sooner. • Additional closure requests include: closure of Riverside Ave. from E. Main St. to Illinois St.; closure of Walnut Ave. from Riverside Ave. to the entrance of the Walnut Ave. parking deck; closure of S. 2nd Ave. from Walnut Ave. to Illinois Ave. • A Class E-1 temporary liquor license. The alcohol service/main stage will be located at the corner of Walnut and Second Avenues. This will be the licensed premises and will be laid out in a manner similar to the past. (Diagram attached). • Alcohol service times requested are: <ul style="list-style-type: none"> Friday, June 6, 2014 starting at 6:00 p.m., last call 10:30 p.m., area cleared by 11:00 p.m. Saturday, June 7, 2014 starting at noon, last call 10:30 p.m., cleared by 11:00 p.m. Sunday, June 8, 2014 starting at noon and ending by 9:00 p.m. • Amplified music will end no later than 10:30 p.m. on Friday and Saturday, and 9:00 p.m. Sunday. • Use of parkways along roadways for directional signs to the event. <p>Following are the estimated costs from each department:</p> <table style="width: 100%; border: none;"> <tr> <td style="width: 15%;">Police Department</td> <td>\$14,617.20</td> </tr> <tr> <td>Public Works</td> <td>\$ 9,421.55</td> </tr> <tr> <td>EMA</td> <td>\$ 840.00</td> </tr> <tr> <td>TOTAL:</td> <td>\$24,878.75</td> </tr> </table>							Police Department	\$14,617.20	Public Works	\$ 9,421.55	EMA	\$ 840.00	TOTAL:	\$24,878.75
Police Department	\$14,617.20													
Public Works	\$ 9,421.55													
EMA	\$ 840.00													
TOTAL:	\$24,878.75													
Attachments: (please list)														
Event coordinator diagrams and detailed listing of event particulars														
Recommendation / Suggested Action (briefly explain):														
Recommendation to approve street closures, use of amplification equipment and Class E-1 Liquor License for the Annual Pride of the Fox Riverfest.														
For office use only:		Agenda Item Number: 7.b												

Municipal Center - Front Lot

RiverFest 2014

2 E Main St, St Charles, IL 60174, USA



VB

VOL

Sand Box

Municipal Center

VB

VB

VB

VB

SB

SB

SB

FB

Sand
Sculpture

SB

SB

VB

FB

FB

FB

FB

[illegible]

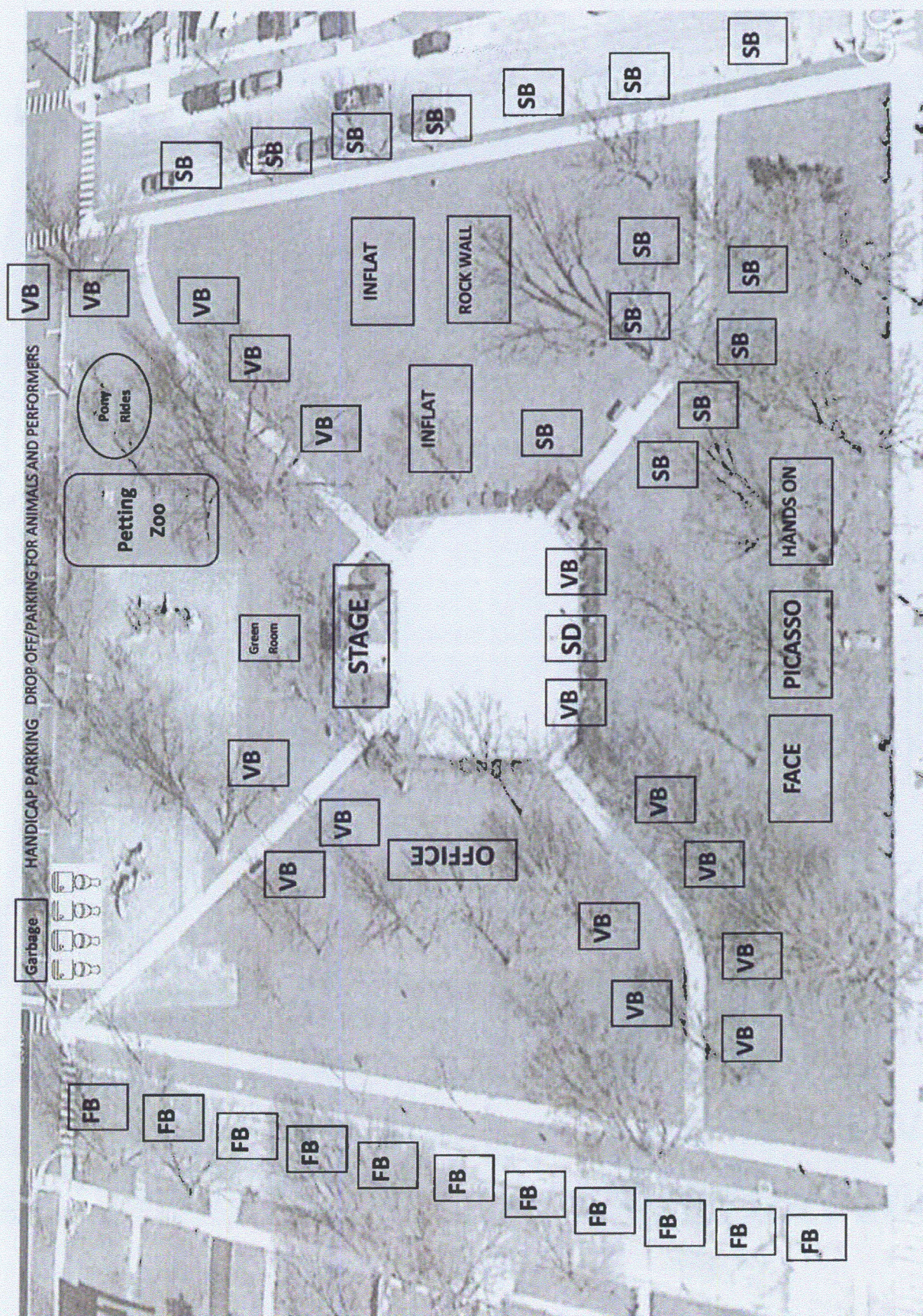
Parking Lot Grass Berm

SEA HAMSTERS

Fitness Challenge

TRASH

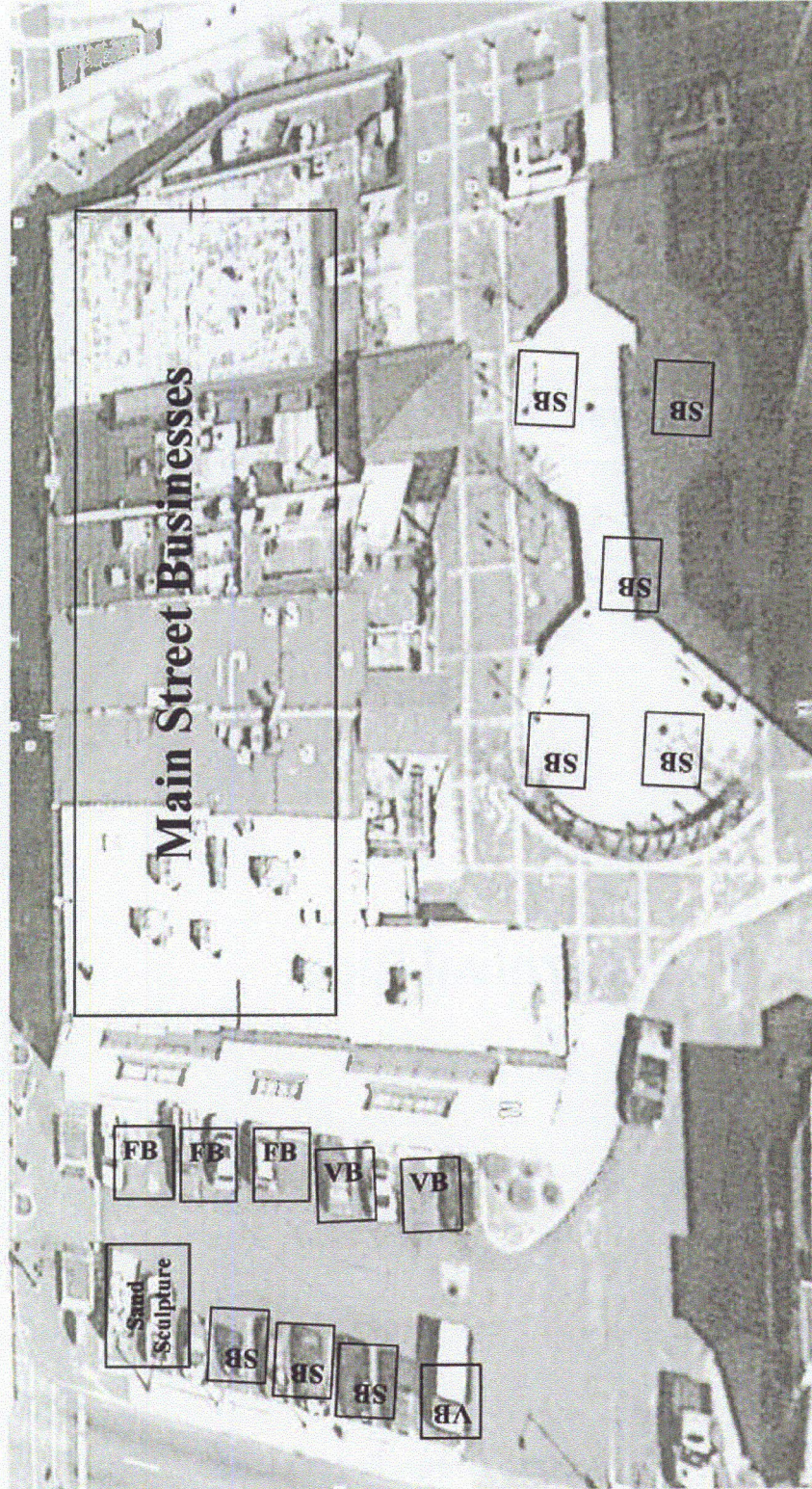




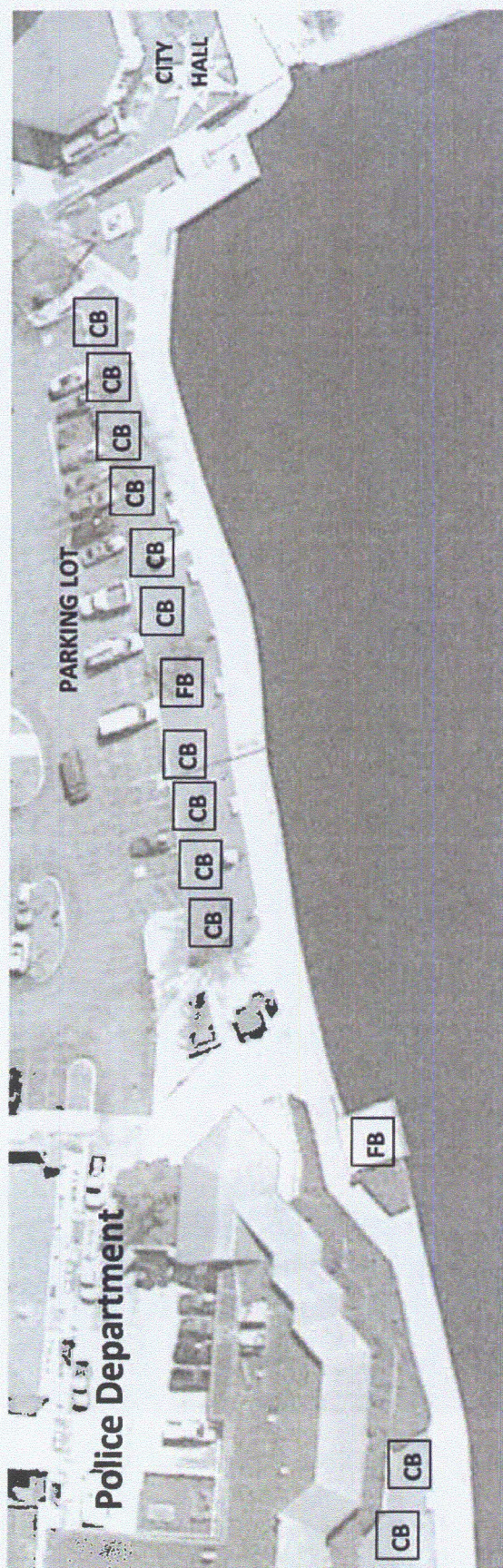
LINCOLN PARK

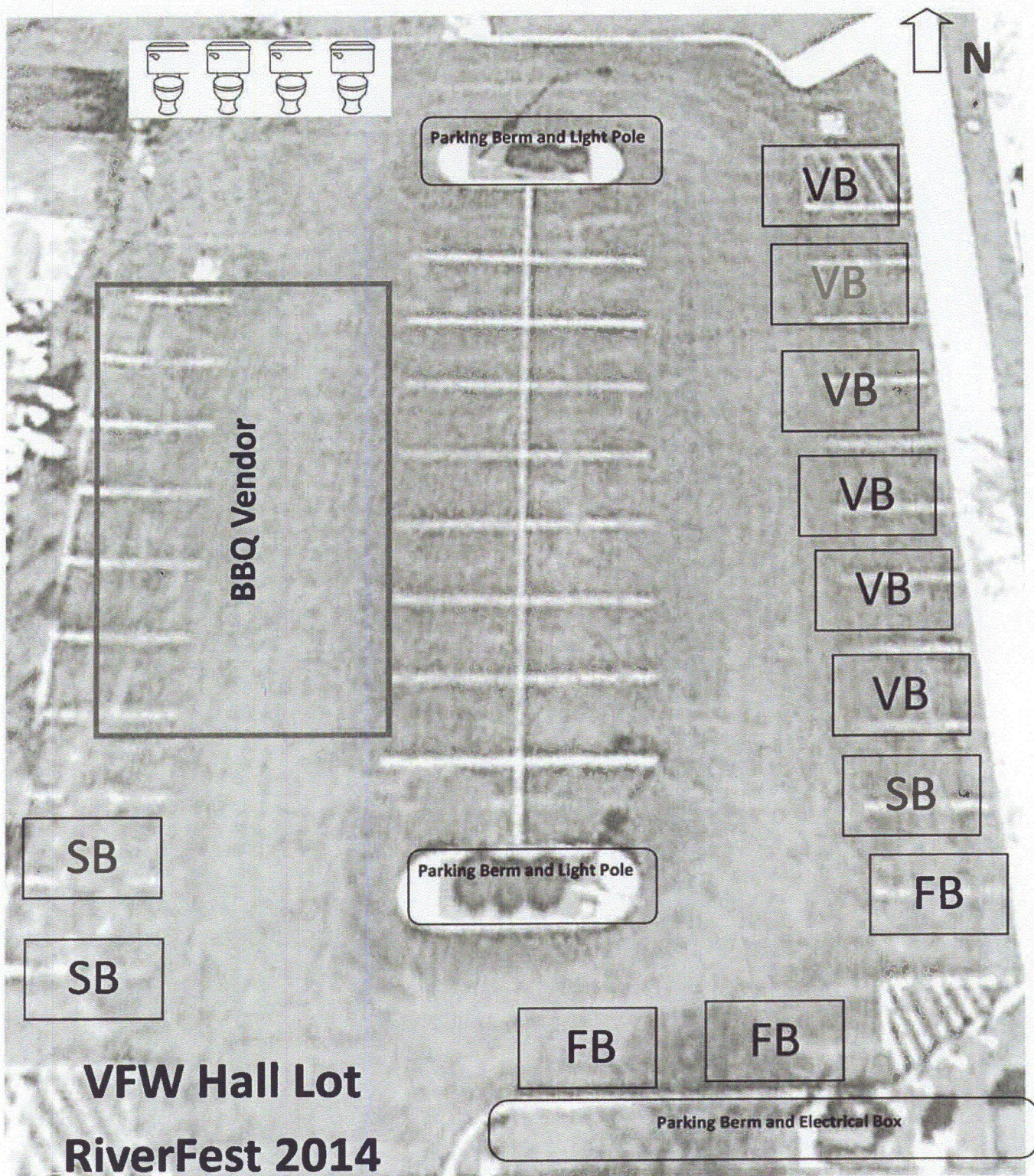
RIVERFEST 2014

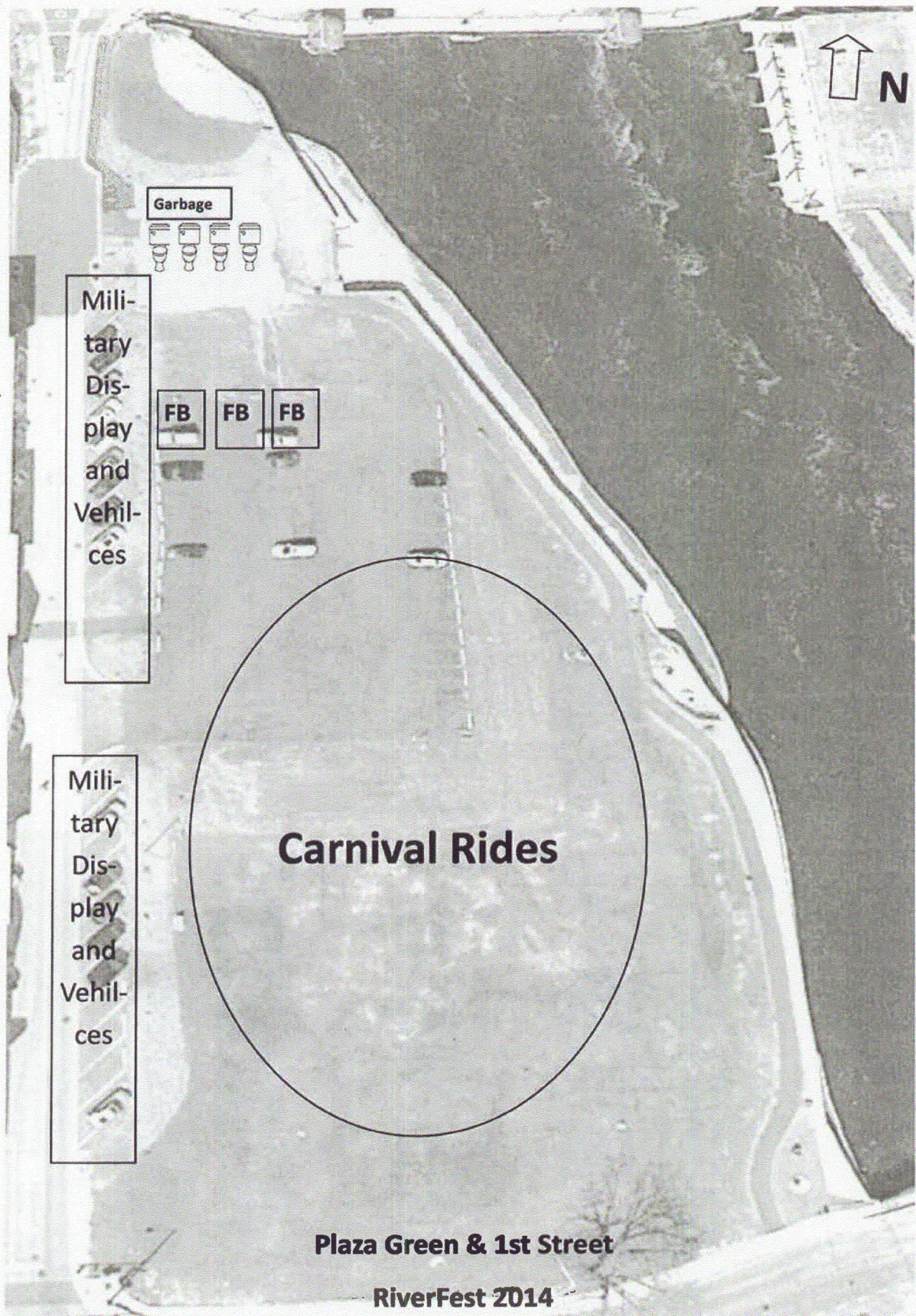
**The “Plaza” and Parking Lot at Route 31 & Main St.
RIVERFEST 2014**











Garbage



Military
Display
and
Vehicles

FB

FB

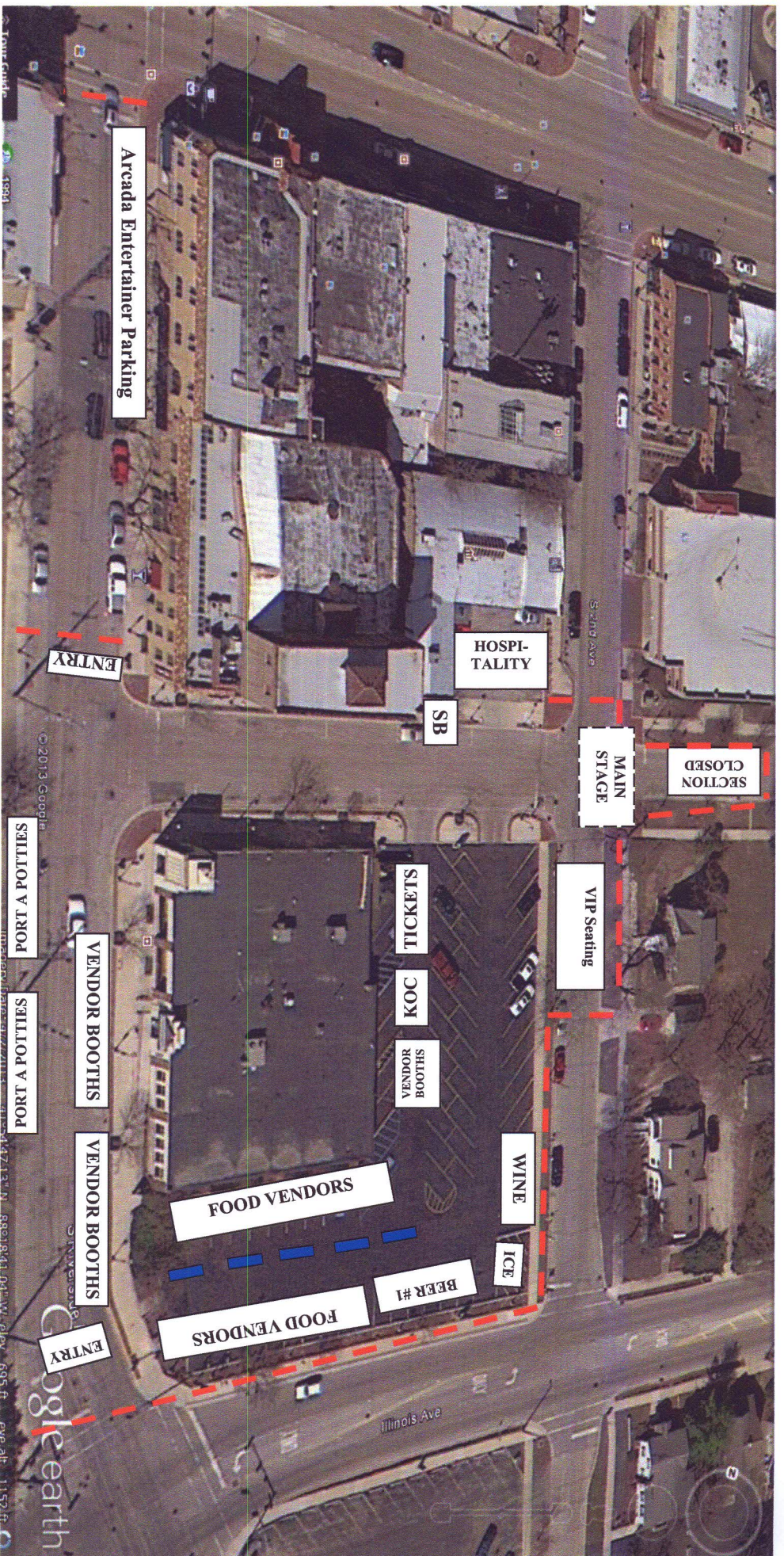
FB

Military
Display
and
Vehicles

Carnival Rides

Plaza Green & 1st Street

RiverFest 2014



RiverFest 2014

Main Stage Venue

Walnut, 2nd & Riverside Avenues

Street & Parking Lot Closing Requests

City of St. Charles RiverFest

June 6 -8, 2014

EASTSIDE

MUNICIPAL BUILDING AREA:

- Checkerboard Lot: close from Wed. 4am, 6/4 – Tues 7am, 6/10
- Back Parking Lot (North side of building, 1st lot): close from Thu 6:30am, 6/5 – Mon 7am, 6/9

RIVERWALK AREA:

- Grassy areas and closed parking lot (west side of old Fire Station) between the Municipal Building and trestle bridge and use of the "overlooks": Thu 6am, 6/5 – Mon 7am 6/9
- Parking Circle between Police Station and trestle: Fri 4am, 6/6 – Sat 10am, 6/7

SOUTHEAST SECTION:

- South Riverside Ave between Main and Illinois: Thur 4am, 6/6 – Mon 5pm, 6/10
- Parking Lot (Walnut & 2nd Avenues): Wed 5pm, 6/5 ~~4~~ Mon 5pm, 6/10 ~~9~~
- Walnut Ave between S. Riverside Ave and entrance to the parking lot east of 2nd Ave: Thur 4am, 6/5 – Mon 7am 6/9
- S. 2nd Ave from parking garage entrance to 1st driveway South of Walnut Ave: Thur 4am, 6/5 – Mon 7am 6/9
- No Parking except for festival delivers on 2nd Avenue between Walnut and Illinois: Friday 4am, 6/5 – Mon 7am 6/9
- To meet BMO Harris Bank's customer parking needs, 2 parking spaces on Main Street designated as "Bank Parking Only 8am – 5pm Friday and 8am – 12pm Saturday" 6/6 – 6/7. To ensure parking lot accessibility during business hours, we will situate fixed elements in the parking spaces so that Riverside Ave can be opened to traffic from 8am to 5:30pm weekdays and until 12:30pm on Saturday (while still maintaining no parking on both blocks)

WESTSIDE

OLD ST CHARLES AREA:

- River Plaza (Heritage Sq.) Parking Lot: Tues 4am, 6/3 – Mon 7am, 6/9
- 3rd Street between Cedar and State: Wed 4am, 6/4 – Mon 7am, 6/9
- No parking on Cedar Street from 2nd to 3rd Street for the duration of the event

VFW PARKING LOT:

- Parking Lot: close from Thur. 4am, 6/5 – Mon 7am, 6/9

LINCOLN PARK AREA:

- 4th Street between W. Main and Cedar: Thur 4am, 6/5 – Mon 7am, 6/9
- 5th Street between W. Main and Cedar: Thur 4am, 6/5 – Mon 7am, 6/9
- Festival parking (Animals & Entertainers) and unloading zones on west side of 4th St between W. Main and Cedar: Thur 4am, 6/5 – Mon 7am, 6/9

ROUTE 31 & MAIN STREET:

- Parking Lot: close from Wed. 4am, 6/4 – Tues 7am, 6/10 * Northwest corner shut down on Wed, rest of lot on Thursday.

1st STREET & PLAZA GREEN:

- 1st Street between Main and Illinois Streets: Fri 4am, 6/6 – Sun 10pm, 6/8
- Plaza Green: Wed 4am, 6/4 – Mon 7am, 6/9

THE PLAZA:

- Center area closed: Thur 4am, 6/5 – Mon 7am, 6/9

SIDEWALK SALES: We ask for approval for St. Charles merchants to bring their own merchandise and wares onto the sidewalks in front of their stores during festival activities.

OUTSIDE VENDORS: To maintain proper character of St. Charles, manage the festival and have appropriate income assessed to produce the festival and its free public events and attractions, we ask that requests for temporary sales locations by other merchants, street vendors, restaurants and not-for-profit groups be directed to us for approval and fee assessment.

SIGNS ON STREET PARKWAYS: We request permission to place RiverFest signage on the street parkways during festival weekend.