

Site Plan-Existing
1 - 2014

Existing Retail Building Remodeling to Randall Shoppes
 600-680 Randall Road
 St. Charles, Illinois

THE CONTRACTOR SHALL DETERMINE EXACT DIMENSIONS AND CONDITIONS AT THE SITE PRIOR TO SUBMITTING A BID. THE CONTRACTOR SHALL COORDINATE ALL UTILITIES WITH ACTUAL FIELD CONDITIONS PRIOR TO PROCEEDING WITH THE WORK AND NOTIFY THE ARCHITECT OF ANY DISCREPANCIES. THIS DRAWING IS THE PROPERTY OF MCCLELLAN BLAKEMORE ARCHITECTS AND MAY NOT BE REPRODUCED WITHOUT THE PRIOR WRITTEN PERMISSION OF THE ARCHITECT.

NO.	DATE	DESCRIPTION
1)	1-18-14	Building Survey
2)	1-14-14	Draft Survey
3)	1-21-14	Owner Review
4)	2-18-14	City of St. Charles Public Review

© COPYRIGHT McClellan Blakemore Architects 2014

Project No. 1406

Scale 1" = 20'-0"

Sheet Title SITE PLAN-EXISTING

Ref. North Sheet No. C100

PRELIMINARY

PRAIRIE STREET

N.87°-53'-15"E. 135.48'

GRASS

CONCRETE

GRASS

GRASS



S.00°-00'-00"E. 318.69'

GRASS

13,667 S.F.
TOTAL BUILDING
PARKING REQUIREMENTS AT 4 PER
1000 = 55 STALLS (58 SHOWN)

DUMPSTER AREA

60'

41.5'

7

18'-0"

24'-0"

6

RAMP

16

RAMP

16

RAMP

16

LANDSCAPING AREA

LINE OF EXISTING PARKING EDGE

EXISTING LIGHT POLE

SIGN

LANDSCAPING AREA

BUS STOP ENCLOSURE

N.00°-00'-00"W. 318.68'

PARKING FOR DEBILITY TO SOUTH

RANDALL ROAD

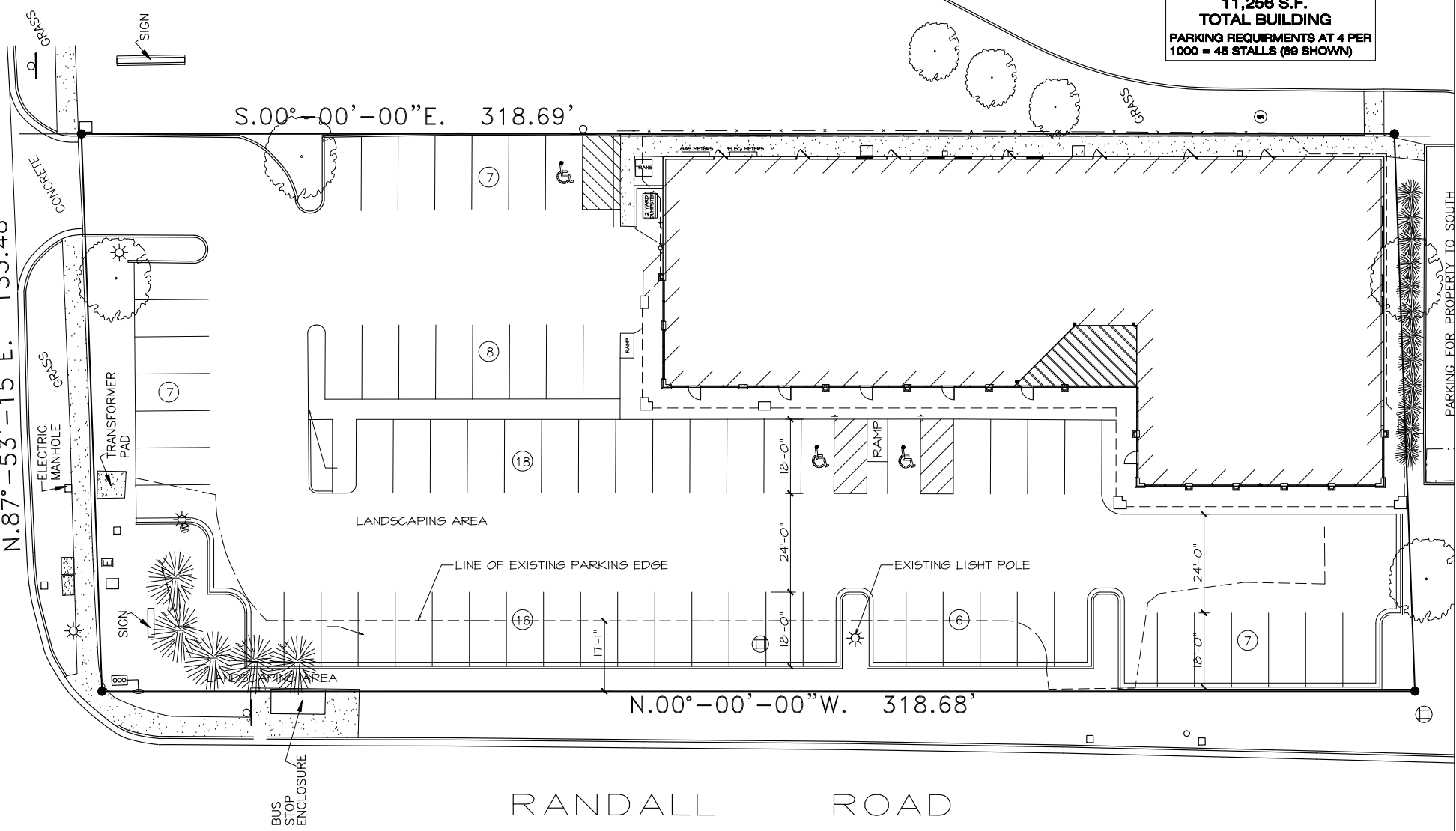
PRAIRIE STREET
N.87°-53'-15"E. 135.48'

S.00°-00'-00"E. 318.69'

N.00°-00'-00"W. 318.68'

RANDALL ROAD

11,256 S.F.
TOTAL BUILDING
PARKING REQUIREMENTS AT 4 PER
1000 = 45 STALLS (69 SHOWN)



Existing
 Retail Building
 Remodeling
 to
 Randall Shoppes
 600-660 Randall Road
 St. Charles, Illinois

THE CONTRACTOR SHALL DETERMINE EXACT
 DIMENSIONS AND CONDITIONS AT THE SITE PRIOR
 TO SUBMITTING A BID. THE CONTRACTOR SHALL
 COORDINATE ALL GRABBING WITH ACTUAL FIELD
 CONDITIONS PRIOR TO PROCEEDING WITH THE
 WORK AND NOTIFY THE ARCHITECT OF ANY
 DISCREPANCIES. THIS DRAWING IS THE PROPERTY
 OF MCCLELLAN BLAKEMORE ARCHITECTS AND
 MAY NOT BE REPRODUCED WITHOUT THE PRIOR
 WRITTEN PERMISSION OF THE ARCHITECT.

NO.	DATE	DESCRIPTION
1)	1-10-14	Building Survey
2)	1-14-14	Draft Survey
3)	1-21-14	Owner Review
4)	2-10-14	City of St. Charles Public Review

© COPYRIGHT McClellan Blakemore Architects 2014

Project No. _____

1406

Scale _____

3/32" = 1'-0"

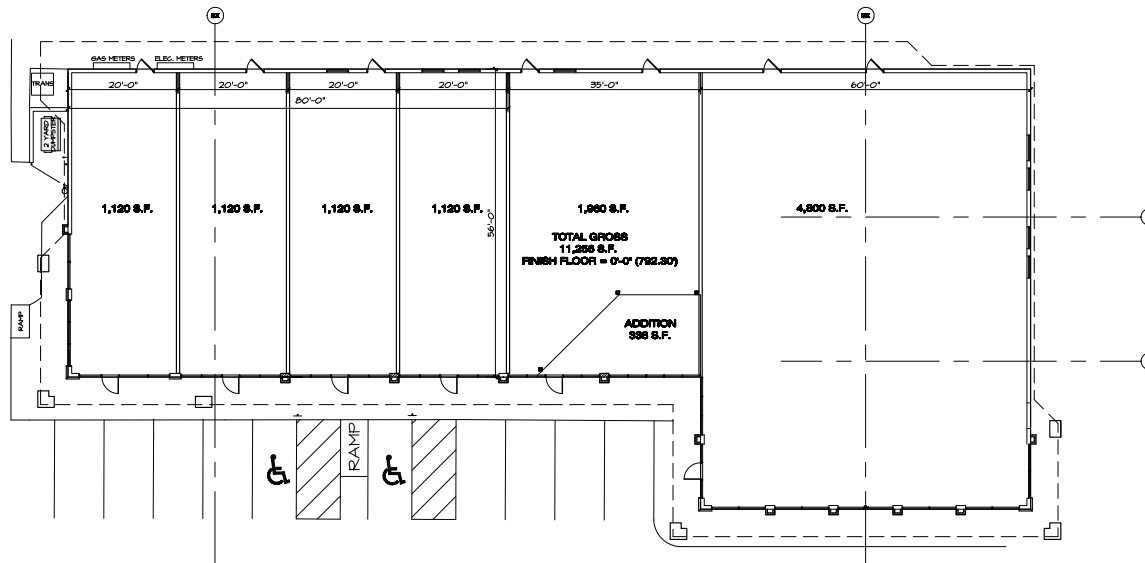
Sheet Title _____

FLOOR PLAN OPTION TWO

Ref. North _____ Sheet No. _____

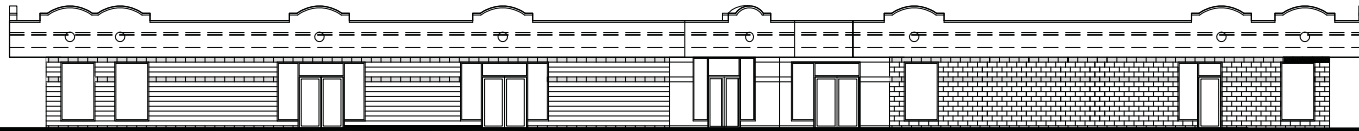
A101

PRELIMINARY



Floor Plan-Option 2
 3/32" = 1'-0"

↕ T.O. EXISTING COPING
 ELEV. = 14'-0"
 ↕ B.O. EXISTING CANOPY
 ELEV. = 8'-0"
 ↕ FINISH FLOOR
 ELEV. = 0'-0"



Conceptual West Elevation #1
 1/8" = 1'-0"

↕ T.O. COPING
 ELEV. = 17'-0"
 ↕ T.O. EXISTING COPING
 ELEV. = 14'-0"
 ↕ B.O. EXISTING CANOPY
 ELEV. = 8'-0"
 ↕ FINISH FLOOR
 ELEV. = 0'-0"



Conceptual West Elevation
 1/8" = 1'-0"

Existing
 Retail Building
 Remodeling
 to
 Randall Shoppes

600-660 Randall Road
 St. Charles, Illinois

THE CONTRACTOR SHALL DETERMINE EXACT DIMENSIONS AND CONDITIONS AT THE SITE PRIOR TO SUBMITTING A BID. THE CONTRACTOR SHALL COORDINATE ALL WORKING WITH ACTUAL FIELD CONDITIONS PRIOR TO PROCEEDING WITH THE WORK AND NOTIFY THE ARCHITECT OF ANY DISCREPANCIES. THIS DRAWING IS THE PROPERTY OF MCCLELLAN BLAKEMORE ARCHITECTS AND MAY NOT BE REPRODUCED WITHOUT THE PRIOR WRITTEN PERMISSION OF THE ARCHITECT.

NO.	DATE	DESCRIPTION
1)	1-10-14	Building Survey
2)	1-14-14	Draft Survey
3)	1-21-14	Owner Review
4)	2-18-14	City of St. Charles Public Review

© COPYRIGHT McClellan Blakemore Architects 2014

Project No.

1406

Scale

1/8" = 1'-0"

Sheet Title

CONCEPTUAL ELEVATIONS

Ref. North Sheet No.

A201

PRELIMINARY



Building Option One

RECEIVED
St. Charles, IL

MAY 22 2014

CDD
Planning Division



Conceptual Rendering
New Office/Retail Building

Randall Shoppes - St. Charles, Illinois

date: 2/10/14

1



Building Option One

RECEIVED
St. Charles, IL

MAY 22 2014

CDD
Planning Division



Conceptual Rendering
New Office/Retail Building

Randall Shoppes - St. Charles, Illinois

date: 2/10/14



RECEIVED
St. Charles, IL
MAY 22 2014
CDD
Planning Division



New Office/Retail Building

Randall Shoppes - St. Charles, Illinois

date: 2/10/14

3



Building Option Two

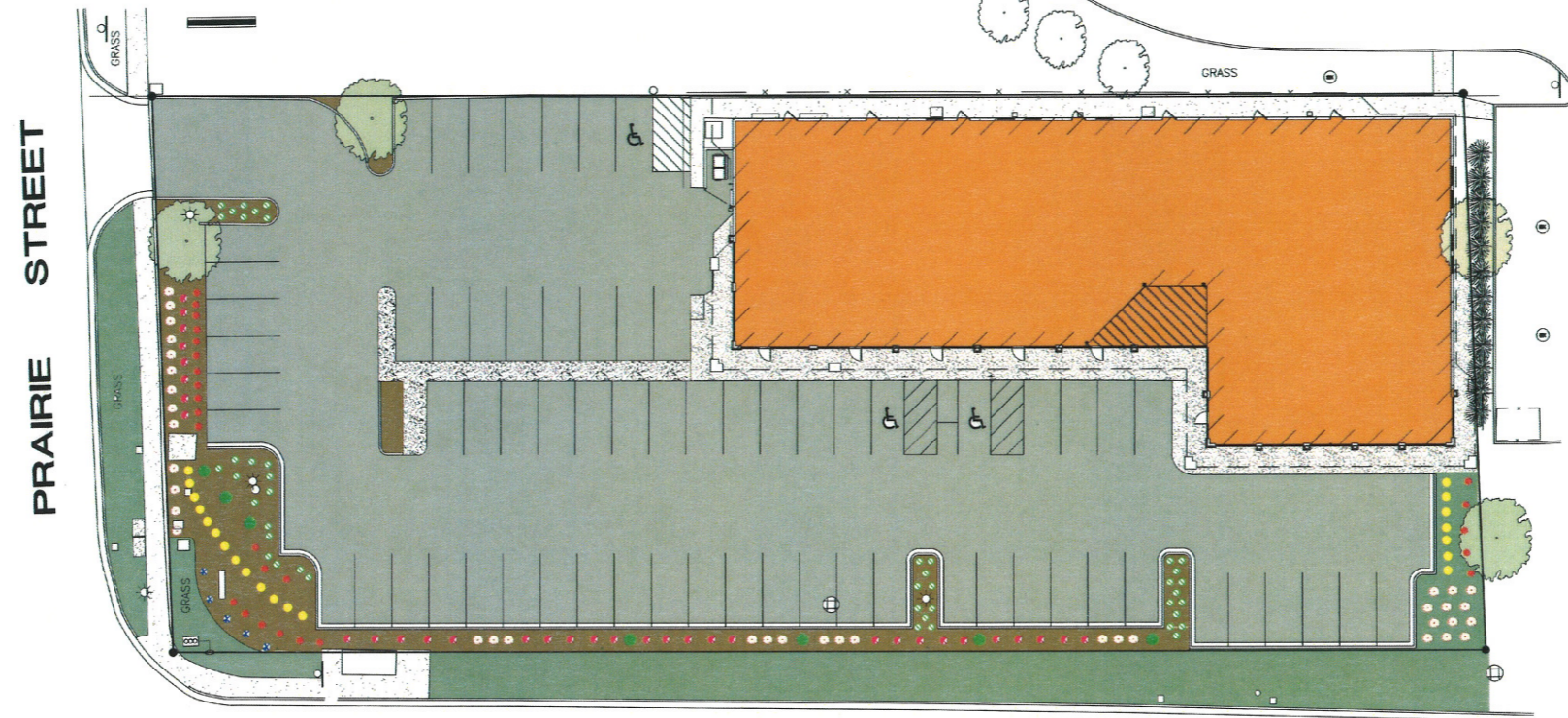
RECEIVED
St. Charles, IL
MAY 22 2014
CDD
Planning Division



Conceptual Rendering
New Office/Retail Building

Randall Shoppes - St. Charles, Illinois








date: 2/10/14



RANDALL ROAD

PRAIRIE STREET

 **LANDSCAPE PLAN**
SCALE: 1" = 20'-0"

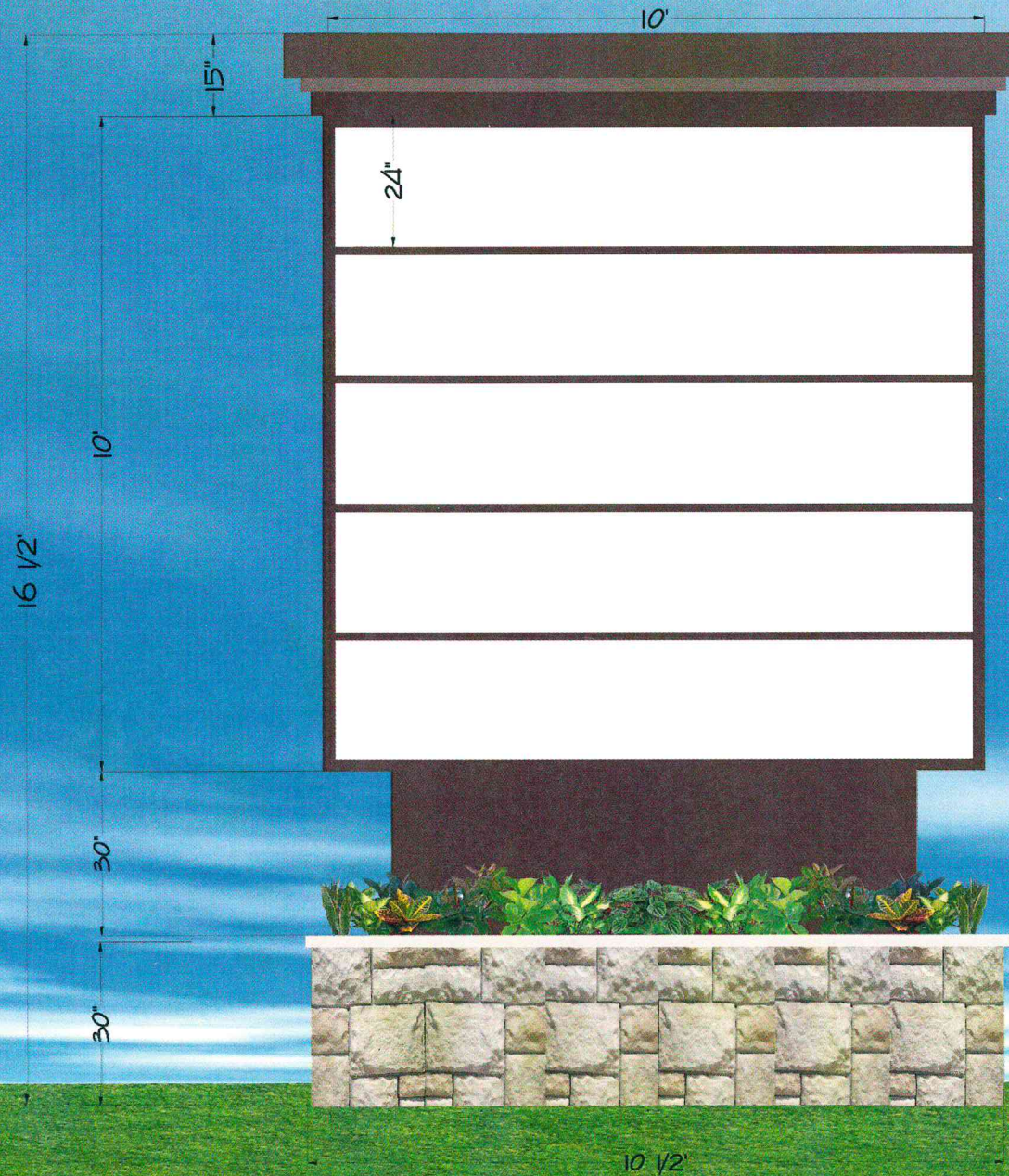
PLANT LIST			
KEY	BOTANNICAL NAME / COMMON NAME	QUANTITY	SIZE
	DENSE, YEW	33	24"
	TINA CRABAPPLE	7	2.5"
	KARL FOESTER GRASSES	20	1 GAL.
	CHICAGO FIRE BURNING BUSH	37	24"
	NEARLY WILD ROSES	25	18"
	GOLD MOUNT, SPIREA	44	18"
	BLUE RUG, JUNIPER	5	6"

REVISIONS	BY

A & T
LAWN CARE
AND
LANDSCAPING, INC

RANDALL RD.
ST. CHARLES, IL

DRAWN
JN
CHECKED
DATE
3-12-14
SCALE
1" = 20'-0"
JOB NO.
14010
SHEET
L-1
OF SHEETS



© Copyright Notice

This drawing and all reproductions thereof are the property of **IMAGE SIGNS** and may not be reproduced, published, changed or used in any way without written consent.

Company First Rockford Group

Date 03/05/14

Notes St. Charles Monument

Approval



ROCKFORD
PH: 282-4141
FAX: 282-4157