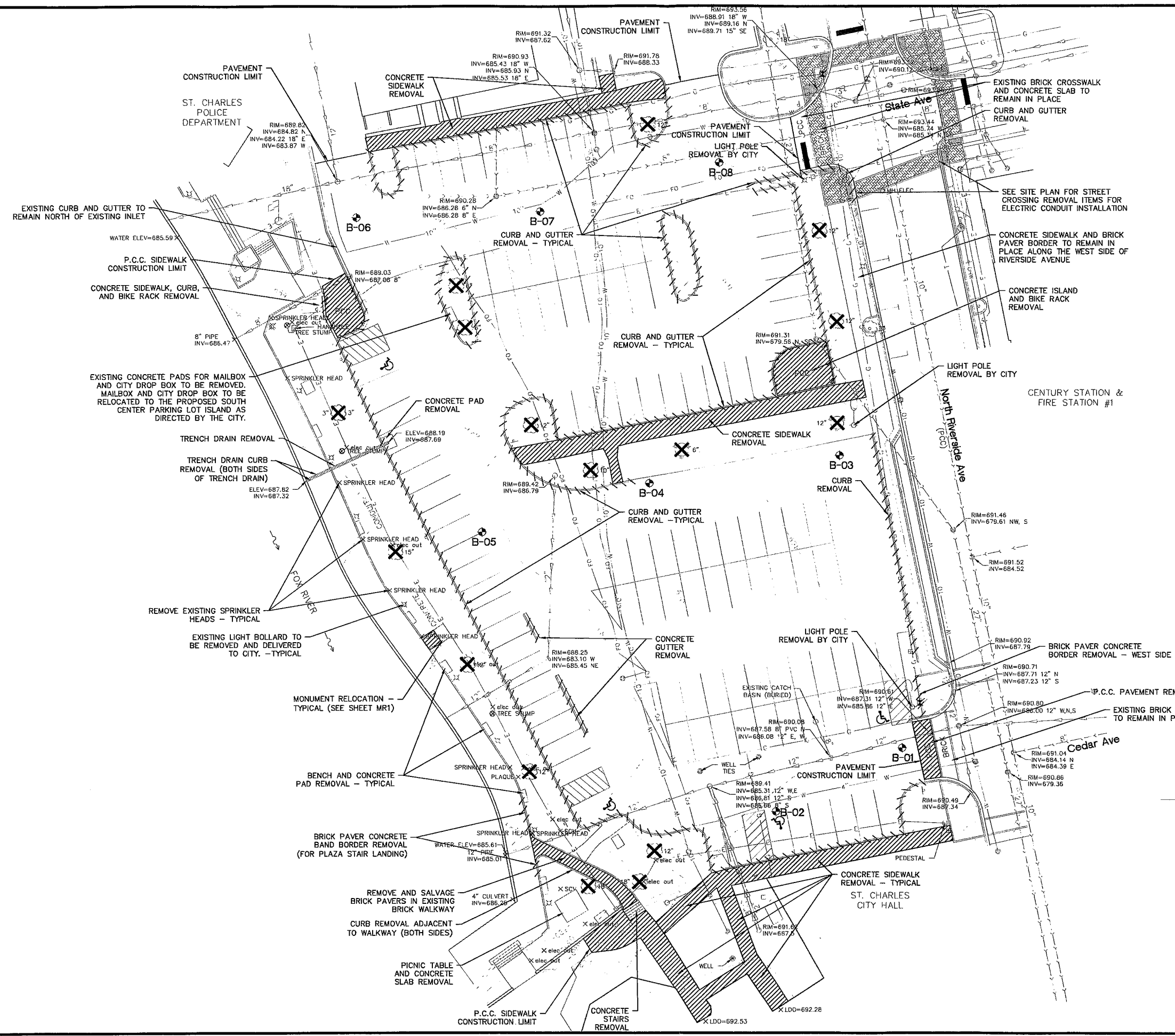


		<b>HISTORIC PRESERVATION COMMISSION AGENDA ITEM EXECUTIVE SUMMARY</b>				
		<b>Agenda Item Title/Address:</b>		COA: 2 E. Main St. (Municipal Campus parking lot)		
		<b>Proposal:</b>		Reconstruct parking lot located north of Municipal Center		
		<b>Petitioner:</b>		City of St. Charles		
		<b>Please check appropriate box (x)</b>				
		<b>PUBLIC HEARING</b>			<b>MEETING 6/18/14</b>	<b>X</b>
<b>AGENDA ITEM CATEGORY:</b>						
X	Certificate of Appropriateness (COA)			Façade Improvement Plan		
	Preliminary Review			Landmark/District Designation		
	Discussion Item			Commission Business		
<b>ATTACHMENTS:</b>						
Plans for proposed parking lot						
<b>EXECUTIVE SUMMARY:</b>						
<p>The City Council has approved a plan to reconstruct the parking lot north of the Municipal Center building. The parking lot will be redesigned to maximize the size of a greenspace along the riverwalk.</p> <p>New landscaping, pedestrian features and lighting will be installed.</p> <p>Existing monuments along the riverwalk will be relocated.</p>						
<b>RECOMMENDATION / SUGGESTED ACTION:</b>						
Provide feedback and recommendations for approval of the COA.						

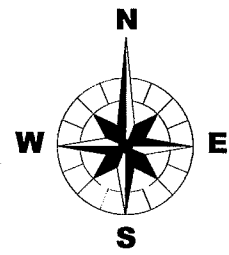


- NOTES:**
1. THE LUMP SUM PAY ITEM FOR "SITE DEMOLITION" SHALL INCLUDE BUT NOT BE LIMITED TO THE REMOVAL ITEMS SHOWN ON THIS PLAN SHEET. SITE DEMOLITION SHALL INCLUDE THE REMOVAL AND DISPOSAL OF ALL ITEMS WITHIN THE PROJECT LIMITS REQUIRED FOR THE CONSTRUCTION OF PROPOSED IMPROVEMENTS EXCEPT WHERE PAY ITEMS ARE PROVIDED FOR SPECIFIC REMOVAL ITEMS.
  2. REFER TO THE LIGHTING/ELECTRICAL PLAN FOR LIGHTING/ELECTRICAL DEMOLITION ITEMS.
  3. HOT MIX ASPHALT PAVEMENT REMOVAL WITHIN THE CONSTRUCTION LIMITS TO BE PAID FOR SEPARATELY.
  4. REMOVE ALL EXISTING CONCRETE SIDEWALK WITHIN THE CONSTRUCTION LIMITS AS DIRECTED BY THE CITY.
  5. REMOVE ALL EXISTING CONCRETE CURB AND GUTTER AND CONCRETE CURB WITHIN THE PROJECT LIMITS AS DIRECTED BY THE CITY.
  6. PROVIDE FULL DEPTH SAW-CUT AT LOCATIONS OF ITEMS TO BE REMOVED AND TO REMAIN IN PLACE - COST INCIDENTAL TO THE CONTRACT.
  7. SEE UTILITY PLAN FOR STORM SEWER AND WATERMAIN REMOVAL ITEMS.
  8. EARTH EXCAVATION FOR PARKING LOT CONSTRUCTION TO BE PAID FOR SEPARATELY.
  9. THE CONTRACTOR SHALL REMOVE AND SAVE EXISTING SIGNS & BIKE RACKS, BENCHES & TABLES AS DIRECTED BY THE CITY. THESE ITEMS SHALL BE DELIVERED TO THE CITY - COST INCIDENTAL TO THE CONTRACT.

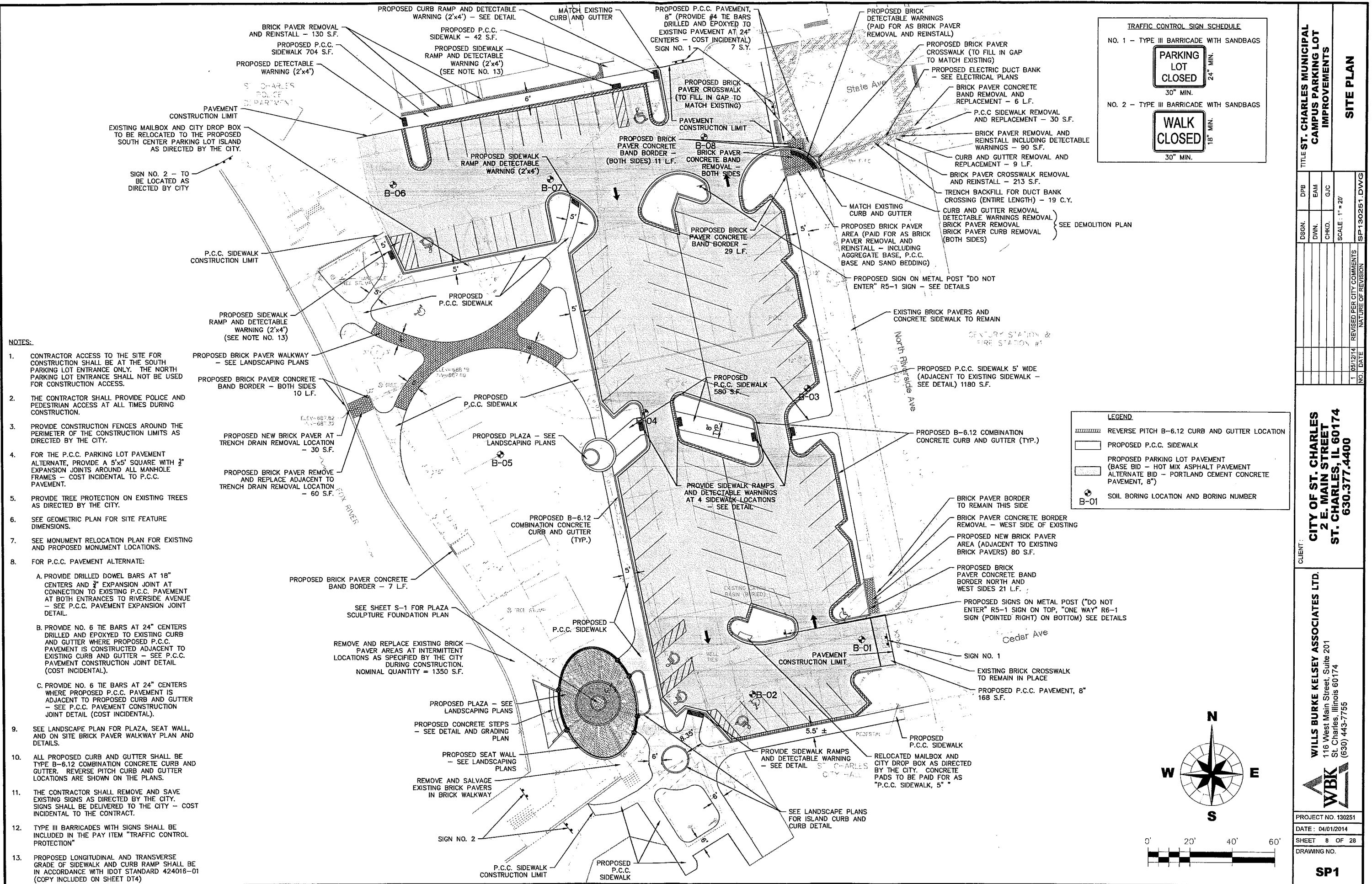
**LEGEND**

X = EXISTING TREE TO BE REMOVED

FO = EXISTING FIBER OPTIC LINE

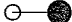
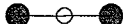
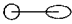
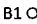
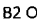
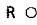








TITLE ST. CHARLES MUNICIPAL CAMPUS PARKING LOT IMPROVEMENTS			
DPB	EAM	GJC	SCALE: 1" = 20'
DSGN.	DWN.	CHKD.	REVISD PER CITY COMMENTS
NO. DATE			NATURE OF REVISION
1 05/12/14			
CITY OF ST. CHARLES 2 E. MAIN STREET ST. CHARLES, IL 60174 630.377.4400			
CLIENT: WILLS BURKE KELSEY ASSOCIATES LTD. 116 West Main Street, Suite 201 St. Charles, Illinois 60174 (630) 443-7755			
PROJECT NO. 130251			
DATE: 04/01/2014			
SHEET 4 OF 28			
DRAWING NO.			
EC1			





### LEGEND

-  PROPOSED LIGHT UNIT, 28FT MOUNTING HEIGHT, WITH 6FT MAST ARM AND 150W LED LUMINAIRE WITH FESTOON GFI OUTLETS (FURNISHED AND INSTALLED BY CITY, FOUNDATION BY CONTRACTOR)
-  PROPOSED LIGHT UNIT, 28FT MOUNTING HEIGHT, WITH TWO (2)- 6FT MAST ARMS AND 150W LED LUMINAIRES WITH FESTOON GFI OUTLETS (FURNISHED AND INSTALLED BY CITY, FOUNDATION BY CONTRACTOR )
- R  EXISTING LIGHT POLE TO BE REMOVED BY THE CITY
- B1  PROPOSED BOLLARD LIGHT (KIM\_VRB1\_LED)
- B2  PROPOSED SPECIALTY LIGHT BOLLARD (FURNISHED AND INSTALLED BY THE CITY, FOUNDATION BY THE CONTRACTOR)
- R  EXISTING BOLLARD LIGHT TO BE REMOVED BY THE CITY
-  EXISTING BOLLARD LIGHT TO REMAIN
- PROPOSED CONDUIT (SIZE AS INDICATED)
- E — PROPOSED LIGHTING CONDUIT AND ELECTRIC CABLE, PROPOSED CONDUIT NUMBER AND SIZE AS INDICATED
- E — EXISTING ELECTRIC CABLE TO REMAIN
-  PROPOSED LIGHTING CONTROLLER (DESIGNED, FURNISHED AND INSTALLED BY THE CITY, FOUNDATION BY CONTRACTOR)
- PP  PROPOSED POWER PEDESTAL, FURNISHED BY THE CITY AND INSTALLED BY THE CONTRACTOR
-  PROPOSED HOLIDAY OUTLET PEDESTAL WITH WATERPROOF GFCI RECEPTACLE
- HH  PROPOSED FIBERGLASS HANDHOLE TO BE FURNISHED BY THE CITY AND INSTALLED BY THE CONTRACTOR
-  GROUND ROD, 5/8"X10' COPPER CLAD

**ELECTRICAL NOTES:**

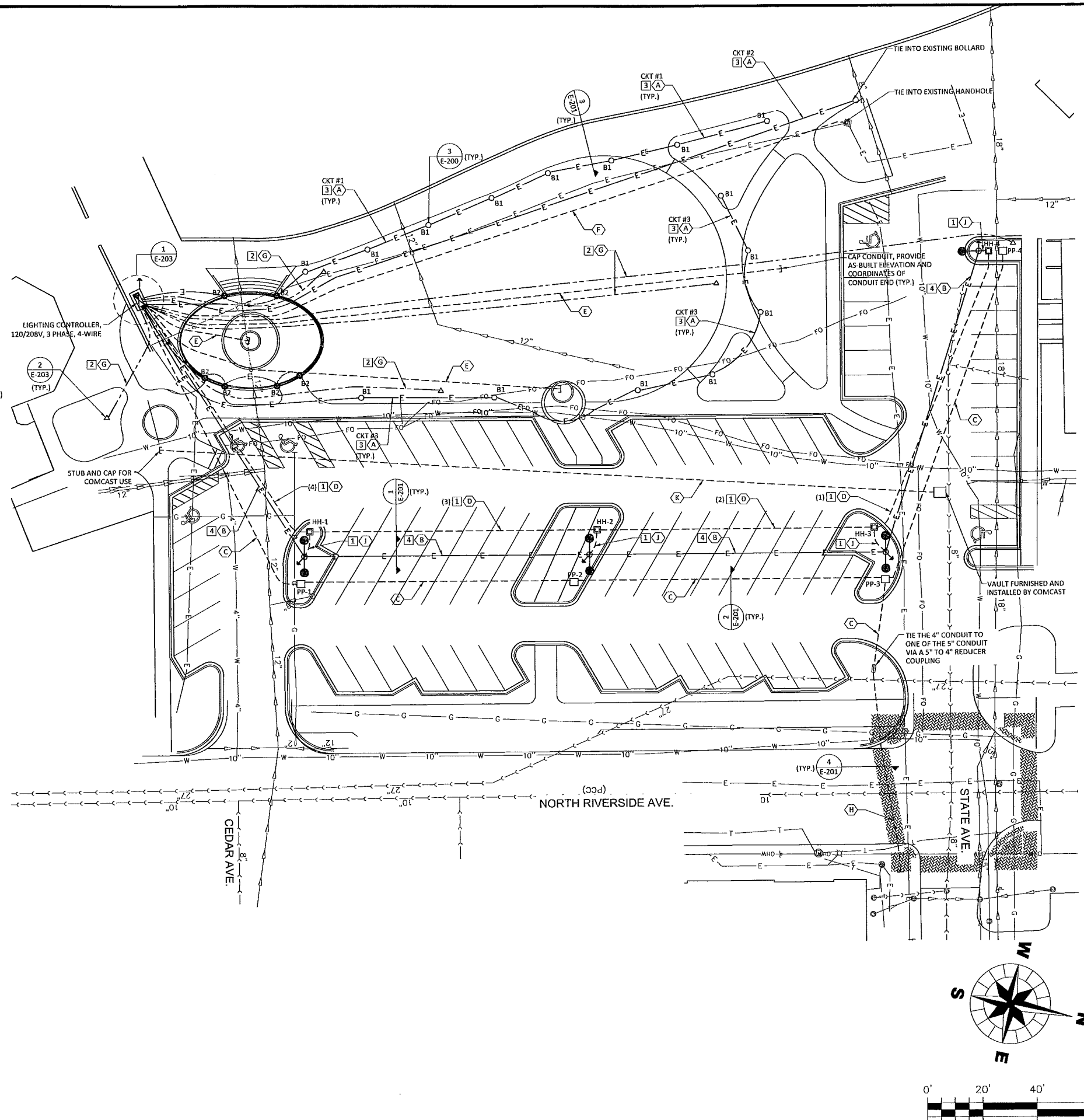
1. THE CONTRACTOR MUST COORDINATE WITH THE CITY OF ST. CHARLES AND ARRANGE TO INVENTORY, INSPECT AND TRANSPORT THE CITY FURNISHED 28FT LIGHT UNITS, LIGHTING CONTROLLER, POWER PEDESTALS TO THE PROJECT SITE. THE CONTRACTOR MUST USE EXTREME CAUTION NOT TO DAMAGE THE EQUIPMENT DURING THE DELIVERY AND INSTALLATION PROCESS. SHOULD ANY ITEM BE DAMAGED BY THE CONTRACTOR'S FORCES, IT MUST BE REPLACED IN KIND AT THE CONTRACTOR'S EXPENSE TO THE SATISFACTION OF THE ENGINEER.
2. ALL THE ELECTRICAL WORK MUST BE IN COMPLIANCE WITH THE MUNICIPAL ELECTRICAL CODE.
3. THE CONTRACTOR MUST COORDINATE WITH THE CITY THE LOCATIONS OF THE ELECTRIC SERVICE DUCT AND THE POWER PEDESTALS PRIOR TO INSTALLING ANY CONDUITS OR DUCTBANK.
4. THE EXISTING BOLLARD LIGHTS TO REMAIN MUST BE CONNECTING TO NEW CIRCUIT(S) IN THE PROPOSED LIGHTING CONTROLLER.
5. THE ELECTRICAL WORK MUST BE COORDINATED WITH THE PAVEMENT AND UTILITY WORK TO AVOID CONFLICTS. THE ELECTRICAL CONDUIT AND DUCTBANK MUST BE INSTALLED PRIOR THE PAVING AND LANDSCAPING WORK.

## CONDUIT SCHEDULE

- ☐ A 1" PVC CONDUIT IN TRENCH (BOLLARD LIGHT CIRCUITS)
- ☐ B 2" PVC CONDUIT ENCASED IN CONCRETE (PARKING LOT LIGHT POLE CIRCUIT)
- ☐ C 4" PVC CONDUIT ENCASED IN CONCRETE (FOR POWER PEDESTALS CIRCUITS)
- ☐ D 2" PVC CONDUIT ENCASED IN CONCRETE (FOR FESTOON CIRCUITS)
- ☐ E 2" PVC CONDUIT IN TRENCH (FOR FUTURE USE)
- ☐ F 4" PVC CONDUIT IN TRENCH (FOR CITY FIBER)
- ☐ G 1" PVC CONDUIT IN TRENCH (HOLIDAY OUTLET PEDESTALS)
- ☐ H (4) 5" PVC CONDUIT ENCASED IN CONCRETE (FOR CITY PRIMARY POWER CIRCUITS)
- ☐ K 4" PVC CONDUIT IN TRENCH (FOR COMCAST USE)
- ☐ J 1" PVC CONDUIT IN TRENCH (FESTOON CIRCUIT)

### CABLE SCHEDULE

- 0 CABLE BY OTHERS
- (3) 1 2 # 12 AWG, TYPE(EPR-RHW) AND 1 #12 INSULATED GREEN GROUND, "120V"  
FESTOON CIRCUITS.  
(THE NUMBER IN PARENTHESES DENOTES THE NUMBER OF CIRCUITS IN CONDUIT)
- 2 2 # 12 AWG, TYPE(EPR-RHW) AND 1 #12 INSULATED GREEN GROUND, "120V"  
HOLIDAY OUTLET PEDESTAL CIRCUITS.
- 3 2 # 10 AWG, TYPE(EPR-RHW) AND 1 #10 INSULATED GREEN GROUND, "120V"  
BOLLARD CIRCUITS.
- 4 2 # 10 AWG, TYPE(EPR-RHW) AND 1 #10 INSULATED GREEN GROUND, "208V"  
PARKING LOT LIGHT POLE CIRCUIT.



## FILE ST. CHARLES MUNICIPAL CAMPUS PARKING LOT IMPROVEMENTS

[illegible]

**CITY OF ST. CHARLES  
2 E. MAIN STREET  
ST. CHARLES, IL 60174  
630.377.4400**

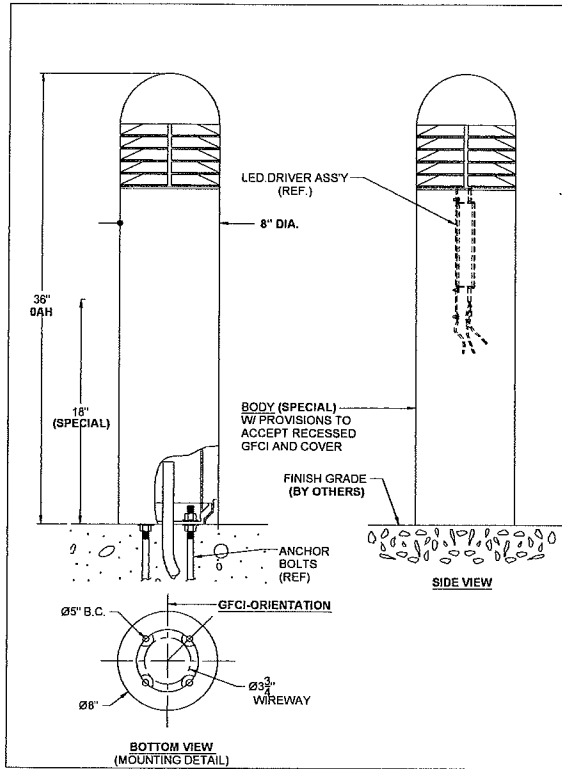
**ADO ENGINEERING, INC.**  
Consulting Engineers



PROJECT NO. 130251
DATE : 05/14/2014
SHEET 20 OF 28
DRAWING NO.

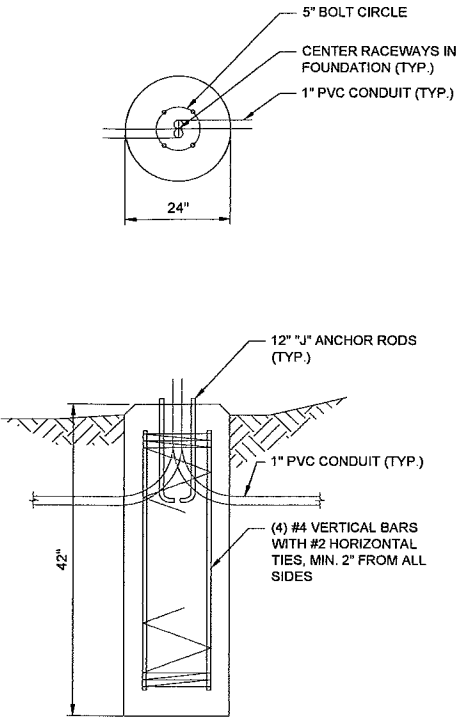
**E-100**



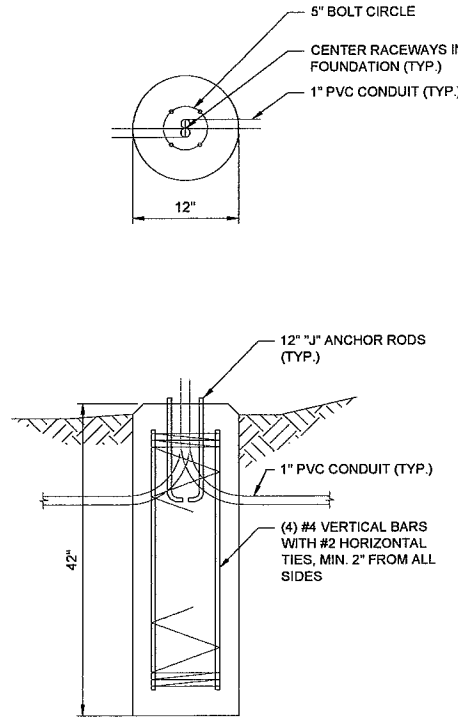


TYPE	SB
CATALOG NUMBER	VRB1/20L5KUV/HS
12A-1665	
FINISH: POLYESTER POWDER COAT.	
KIM COLOR: DB	
TO MATCH:	
PROVIDE A SAMPLE COLOR CHIP	
LAMPING	
LAMP TYPE	LED
SOCKET	LED
WATTAGE	20L5KUV
VOLTAGE	120 - 277
ANCHOR BOLTS	4
QTY	4
SIZE	3/8" X 10" + 2"
BOLT CIRCLE	5"
PROJECTION	1.5"
LEVELING NUTS AND WASHERS MUST BE INSTALLED UNDER ALL BASES	
ONE APPROVED DRAWING MUST BE RETURNED TO KIM BEFORE THIS PRODUCT CAN BE FABRICATED	
WARNING: THIS FIXTURE MUST BE GROUNDED IN ACCORDANCE WITH LOCAL CODES OR THE NATIONAL ELECTRICAL CODE FAILURE TO DO SO MAY RESULT IN SERIOUS PERSONAL INJURY	

3 BOLLARD (B1) DETAIL  
E-200 NTS


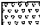
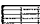
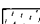

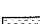
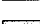




2 SPECIALTY BOLLARD FOUNDATION DETAIL  
E-200 NTS



1 BOLLARD FOUNDATION DETAIL  
E-200 NTS

TITLE: ST. CHARLES MUNICIPAL CAMPUS PARKING LOT IMPROVEMENTS			
DSGN.	ADD.	CP.	ADO.
DWN.	CHKD.	SCALE:	AS NOTED
E-200, DWG.			
CITY OF ST. CHARLES 2 E. MAIN STREET ST. CHARLES, IL 60174 630.377.4400			
CLIENT:			
ADO ENGINEERING, INC. Consulting Engineers 600 W. Fulton Street, 8th Floor Chicago, IL 60661			
PROJECT NO. 130251			
DATE: 05/14/2014			
SHEET 21 OF 28			
DRAWING NO.			
E-200			

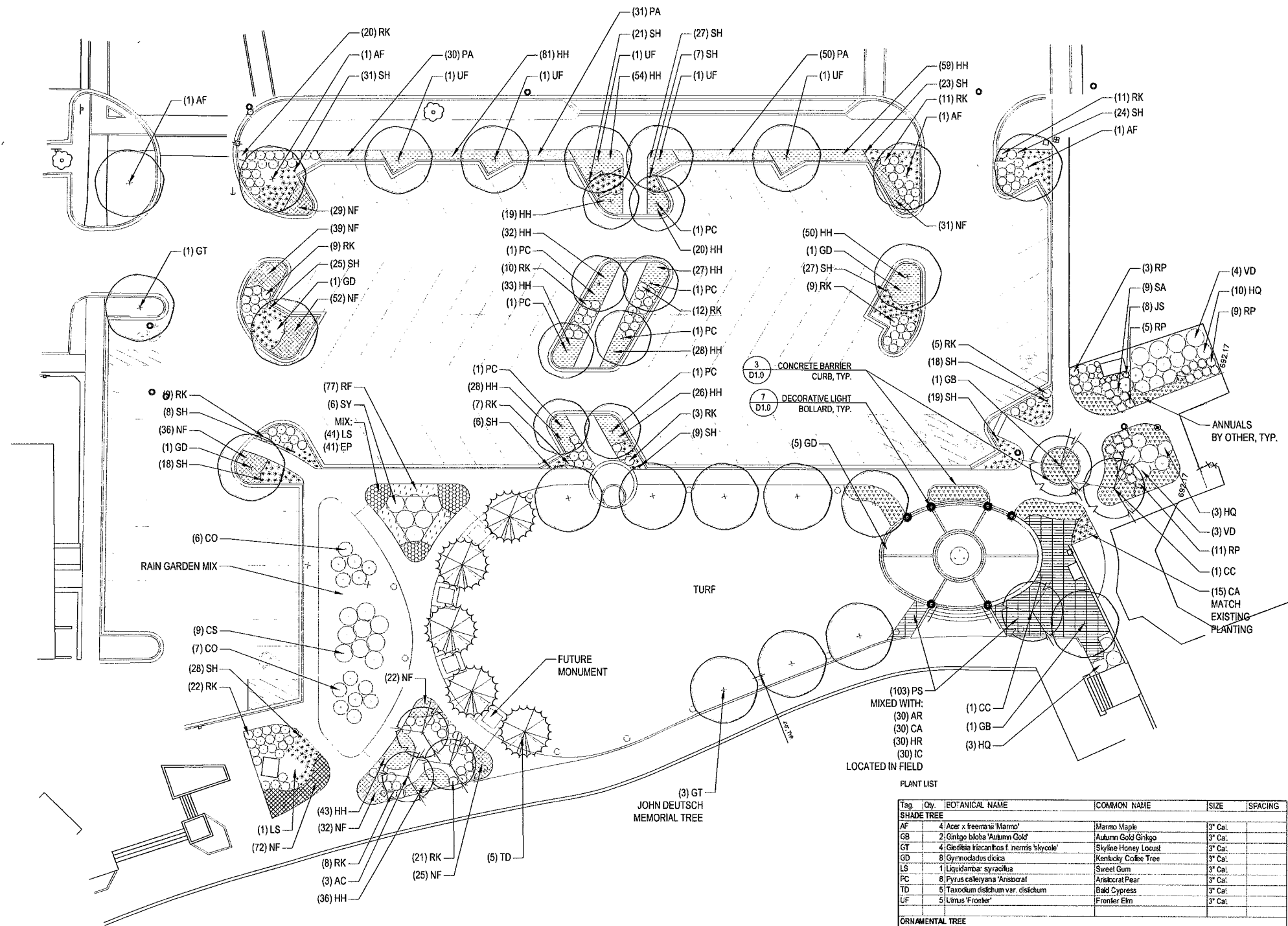
	NEPETA X FAASSERII 'WALKERS LOW'
	ANNUALS TO MATCH PLANTERS
	PHLOX SUBULATA, WHITE AND BLUE WITH: (30) ASTILBE 'RHEINLAND' (30) HOSTA 'ROYAL STANDARD' (30) IRIS 'CAESAR'S BROTHER' (30) CALAMAGROSTIS ACUTIFLORA 'KARL FOERSTER'
	RUDBECKIA FULGIDA 'GOLDSTRUM'
	50% LIATRIS SPICATA, 50% ECHINACEA PURPUREA
	HEMEROCALLIS 'HAPPY RETURNS'
	PEROVSKIA ATRIPLICIFOLIA 'LITTLE SPIRE'
	RAIN GARDEN MIX
	TURF

Botanical Name	Common Name	PLS Ounces/Acre
<b>Permanent Grasses/Sedges/Rushes:</b>		
<i>Carex crisatella</i>	Crested Oval Sedge	1.00
<i>Carex lurida</i>	Bottlebrush Sedge	2.00
<i>Carex vulpinoidea</i>	Brown Fox Sedge	6.00
<i>Elymus virginicus</i>	Virginia Wild Rye	12.00
<i>Glyceria striata</i>	Fowl Manna Grass	1.25
<i>Juncus effusus</i>	Common Rush	1.00
<i>Juncus torreyi</i>	Torney's Rush	0.25
<i>Leersia oryzoides</i>	Rice Cut Grass	8.00
<i>Panicum virgatum</i>	Switch Grass	1.00
<i>Scirpus atrovirens</i>	Dark Green Rush	1.00
<i>Scirpus cyperinus</i>	Wool Grass	0.50
<i>Scirpus fluviatilis</i>	River Bulrush	0.25
<i>Scirpus validus</i>	Great Bulrush	6.00
<b>Total</b>		<b>40.25</b>

<i>Avena sativa</i>	Common Oat	360.00
<i>Lolium multiflorum</i>	Annual Rye	100.00
	<b>Total</b>	<b>460.00</b>

<i>Alisma</i> spp.	Water Plantain (Various N)	4.25
<i>Asclepias incarnata</i>	Swamp Milkweed	1.50
<i>Bidens</i> spp.	Bidens (Various Mix)	2.00
<i>Helenium autumnale</i>	Sneezeweed	2.00
<i>Lycopus americanus</i>	Common Water Horehound	0.25
<i>Mimulus ringens</i>	Monkey Flower	1.00
<i>Penthorum sedoides</i>	Ditch Stonecrop	0.50
<i>Polygonum pensylvanicum</i>	Pinkweed	4.00
<i>Rudbeckia subtomentosa</i>	Sweet Black-Eyed Susan	1.00
<i>Sagittaria latifolia</i>	Common Arrowhead	1.00
<i>Senna hebecarpa</i>	Wild Senna	1.00
<i>Thalictrum dasycarpum</i>	Purple Meadow Rue	2.00
<b>Total</b>		<b>20.50</b>

<i>Asclepias incarnata</i>	Swamp Milkweed	plug (350)
<i>Ceropegia tritipes</i>	Tall Ceropegia	plug (350)
<i>Eupatorium maculatum</i>	Spotted Joe-Pye Weed	plug (350)
<i>Iris virginica</i>	Blue Flag	plug (350)
<i>Liatris spicata</i>	Marsh Blazing Star	plug (350)
<i>Lobelia cardinalis</i>	Cardinal Flower	plug (350)
<i>Lobelia siphilitica</i>	Great Blue Lobelia	plug (350)
<i>Silphium terebinthinaceu</i>	Prairie Dock	plug (350)
<i>Verbena hastata</i>	Blue Vervain	plug (350)



ALL PROPOSED TURF AREAS SHALL RECEIVE A MINIMUM 4" OF TOPSOIL, AND ALL PROPOSED PLANT BEDS SHALL RECEIVE A MINIMUM OF 12" OF TOPSOIL.

Tag	Qty	BOTANICAL NAME	COMMON NAME	SIZE	SPACING
<b>SHADE TREE</b>					
AF	4	Acer x freemansii 'Marmo'	Marmo Maple	3" Cal	
GB	2	Quercus bicolor 'Autumn Gold'	Autumn Gold Oak	3" Cal	
GT	4	Celastrus scandens 'F. nerris' 'skycole'	Skyline Honey Locust	3" Cal	
GD	8	Gynnodictyon dicalis	Kentucky Coffee Tree	3" Cal	
LS	1	Liquidambar styraciflua	Sweet Gum	3" Cal	
PC	8	Pyrus calleryana 'Anisocrat'	Anisocrat Pear	3" Cal	
TD	5	Taxodium distichum var. distichum	Bald Cypress	3" Cal	
UF	5	Ulmus 'Frontier'	Frontier Elm	3" Cal	
<b>ORNAMENTAL TREE</b>					
AG	3	Amelanchier x grandiflora 'Autumn Brilliance'	Apple Serviceberry	2" Cal	
CC	2	Cercis canadensis	Eastern Redbud	2" Cal	
<b>DECIDUOUS SHRUBS</b>					
CO	13	Cephalanthus occidentalis	Burton Bush	24"	60"
CS	8	Cornus sericea	Red Twigg Dogwood	36"	72"
HQ	16	Hydrangea quercifolia	Oakleaf Hydrangeas	36"	60"
RK	157	Rosa 'Redfin'	Double Knockout Rose	24"	36"
SA	9	Spiraea alba	Meadowsweet	24"	36"
SY	6	Syringa patula 'Miss Kim'	Miss Kim Lilac	36"	72"
VD	7	Viburnum dentatum	Arrowood Viburnum	36"	72"
<b>BROADLEAF AND EVERGREEN SHRUBS</b>					
JS	8	Juniperus scopulorum 'Seydotti'	Seydotti Juniper	#3	24"
RP	28	Rhododendron 'PJM'	PJM Rhododendron	24"	36"
<b>PERENNIALS AND ORNAMENTAL GRASSES</b>					
AR	30	Aster 'Rheinland'	Aster	#1	18"
CA	45	Calamagrostis canadensis 'Karl Foerster'	Festler Reed Grass	#3	24"
EP	41	Echinacea purpurea	Purple Cone Flower	#1	18"
HH	583	Hieracium 'Happy Returns'	Happy Returns Daylily	#1	18"
HR	30	Hosta 'Royal Standard'	Royal Standard Hosta	#1	36"
IC	30	Iris 'Caesar's Brother'	Caesar's Brother Iris	#1	30"
LS	41	Liatris spicata 'Kobold'	Spike Gayltheria	#1	18"
NF	538	Nepeta 'Fassenstein' 'Walker's Low'	Walker's Low Catmint	#1	18"
PA	111	Paroskia atriplicifolia 'Little Sprig'	Little Sprig Russian Sage	#1	18"
PS	103	Phlox subulata	Moss Phlox Blue and White	#1	18"
RF	77	Rudbeckia hirta 'Goldstrum'	Black-Eyed Susan	#1	18"
SH	264	Sporobolus heterolepis	Prairie Dropseed	#1	18"

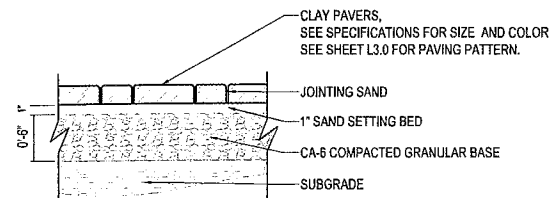
Land Design  
Collaborative  
incorporated

[illegible]

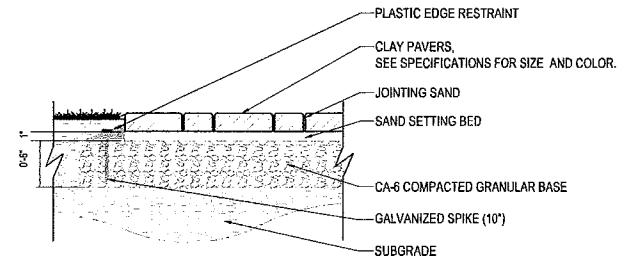
St. Charles Parking Lot

Drawing	Sheet
---------	-------

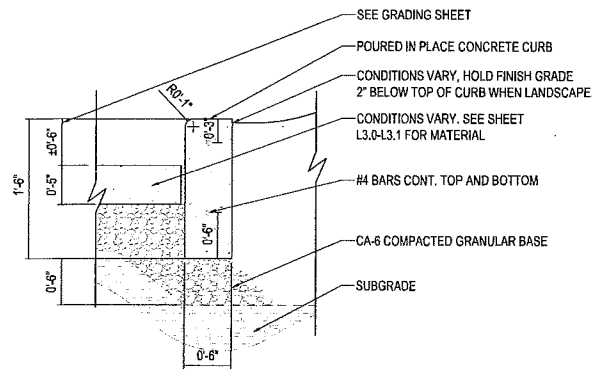
L1.0



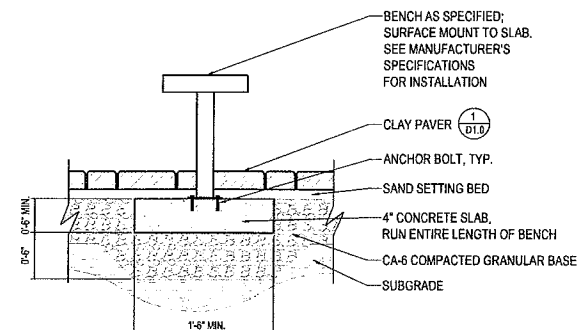
**1 Stone and Clay Paver on Granular Base**  
Scale: 1"=1'-0"



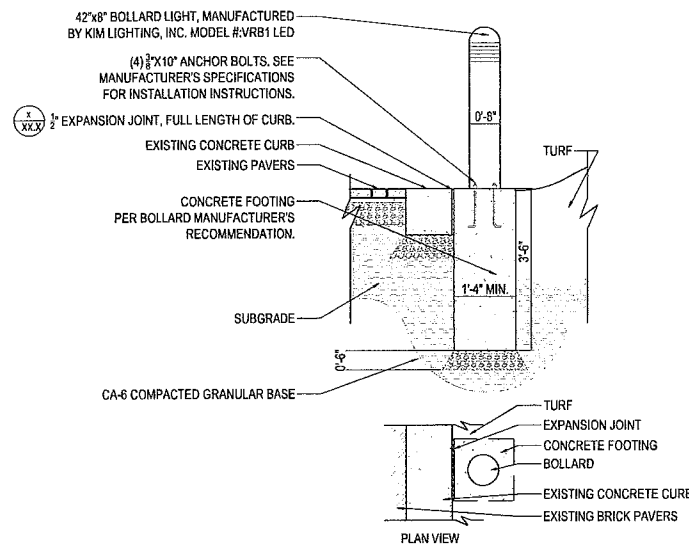
**2 Paver with Plastic Edge Restraint**  
Scale: 1"=1'-0"



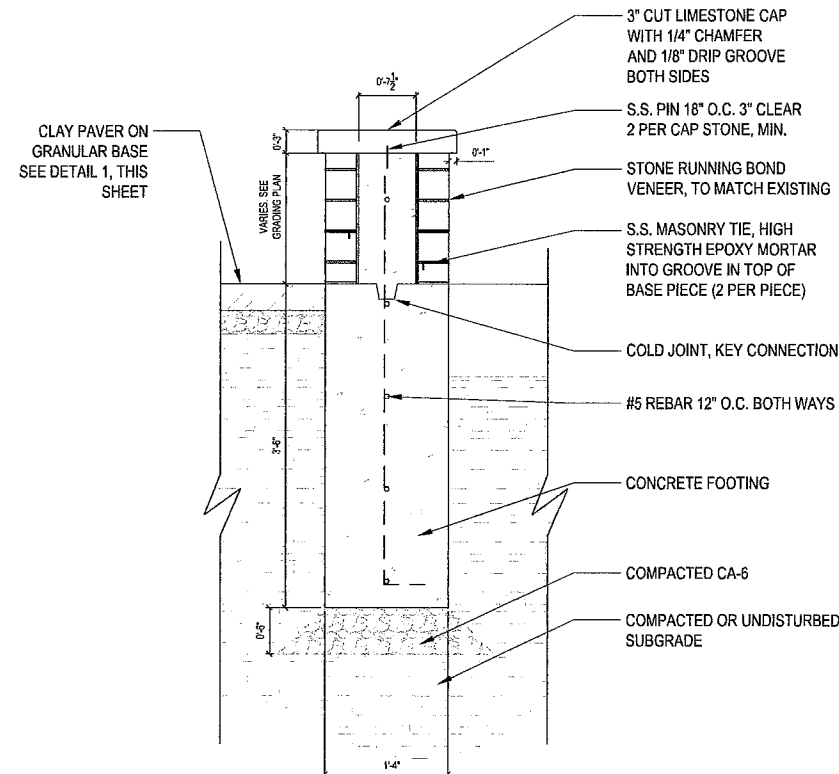
**3 Concrete Barrier Curb**  
Scale: 1"=1'-0"



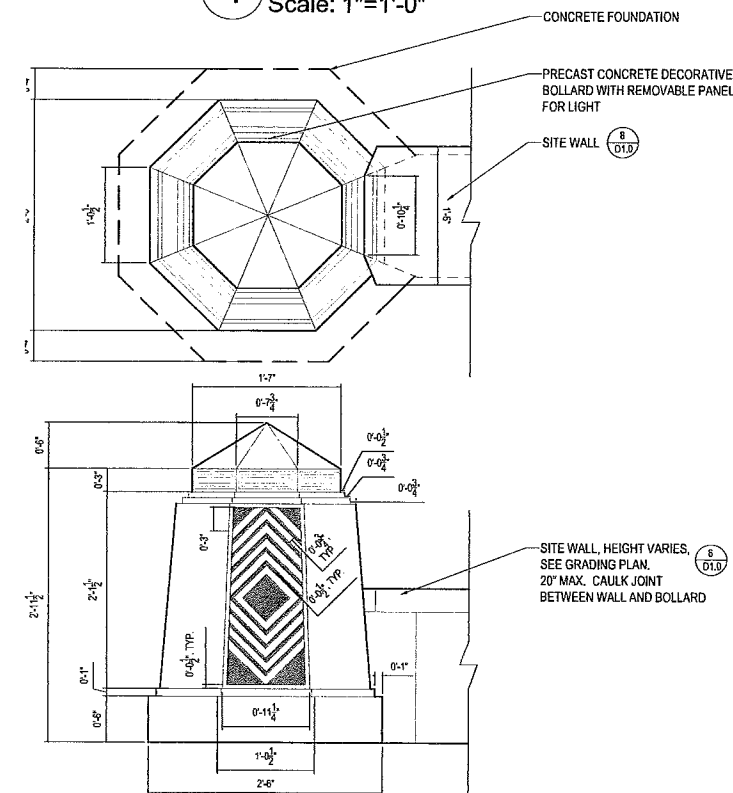
**4 Bench Setting in Pavers**  
Scale: 1"=1'-0"



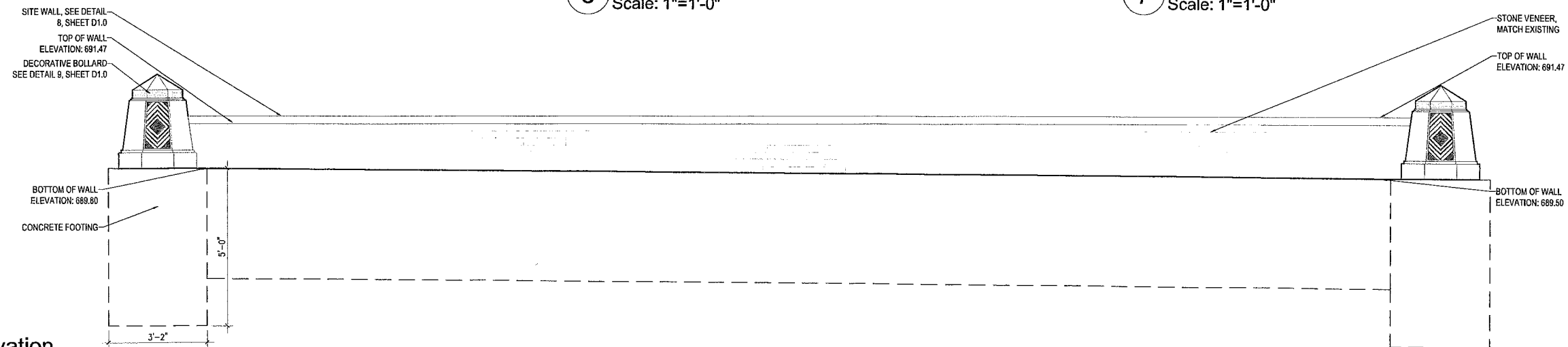
**5 Light Bollard**  
Scale: 1/2"=1'-0"



**6 Site Wall**  
Scale: 1"=1'-0"



**7 Decorative Light Bollard (Not In Contract)**  
Scale: 1"=1'-0"



**8 Wall Elevation**  
Scale: 1/2"=1'-0"



Land Design Collaborative  
incorporated  
301 S. 1st St., Suite 200  
St. Charles, MO 63301  
(636) 929-8770  
info@landdesigncollaborative.com

# St. Charles Parking Lot

## St. Charles, Illinois

### CONSTRUCTION DETAILS

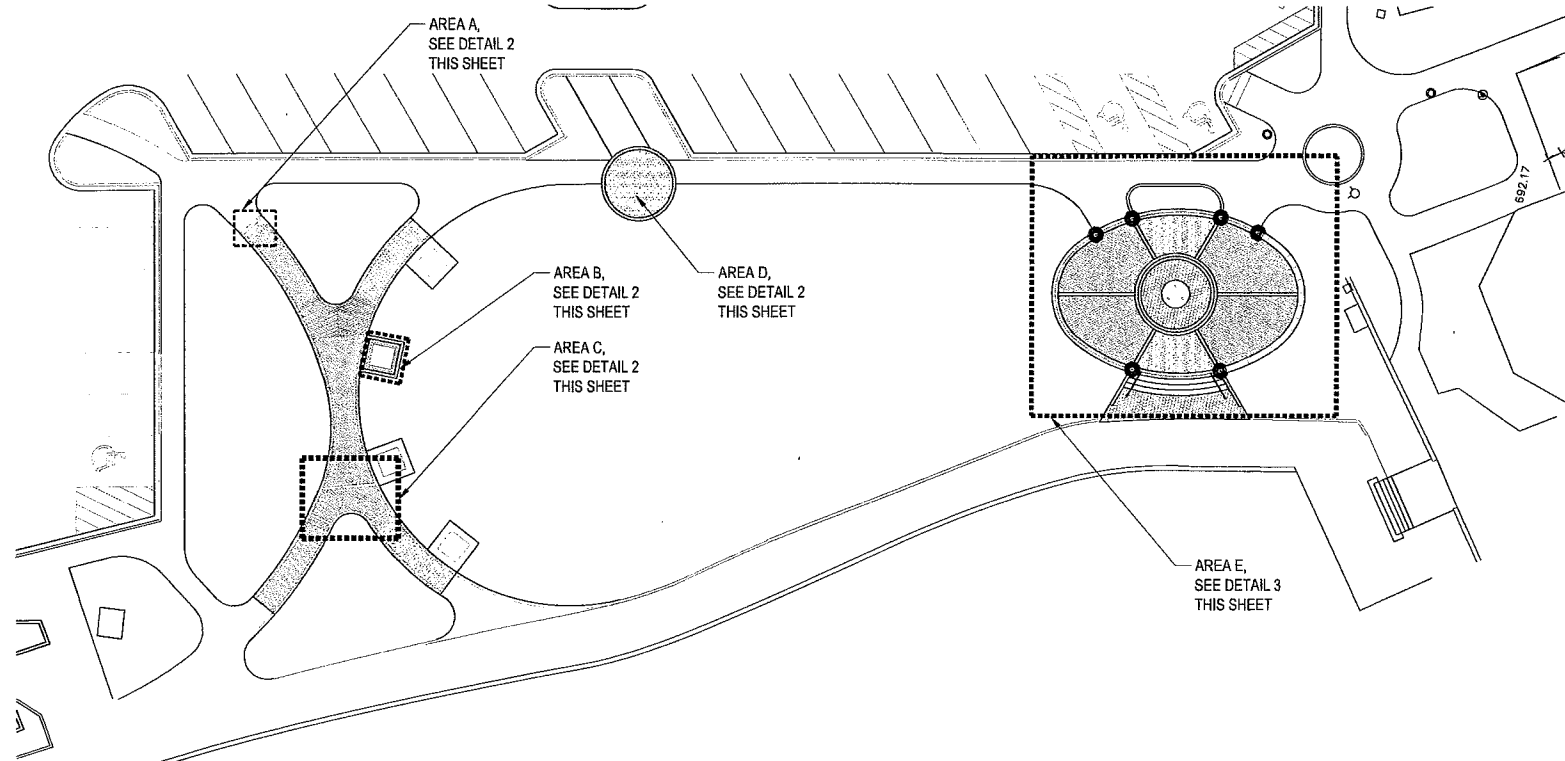
Date of Issue: 5/14/2014  
Project No:  
Designed By: Drawn By: Checked By:

Issued For:  
No: Date: By:  
Revision #1 3/27/14 ML

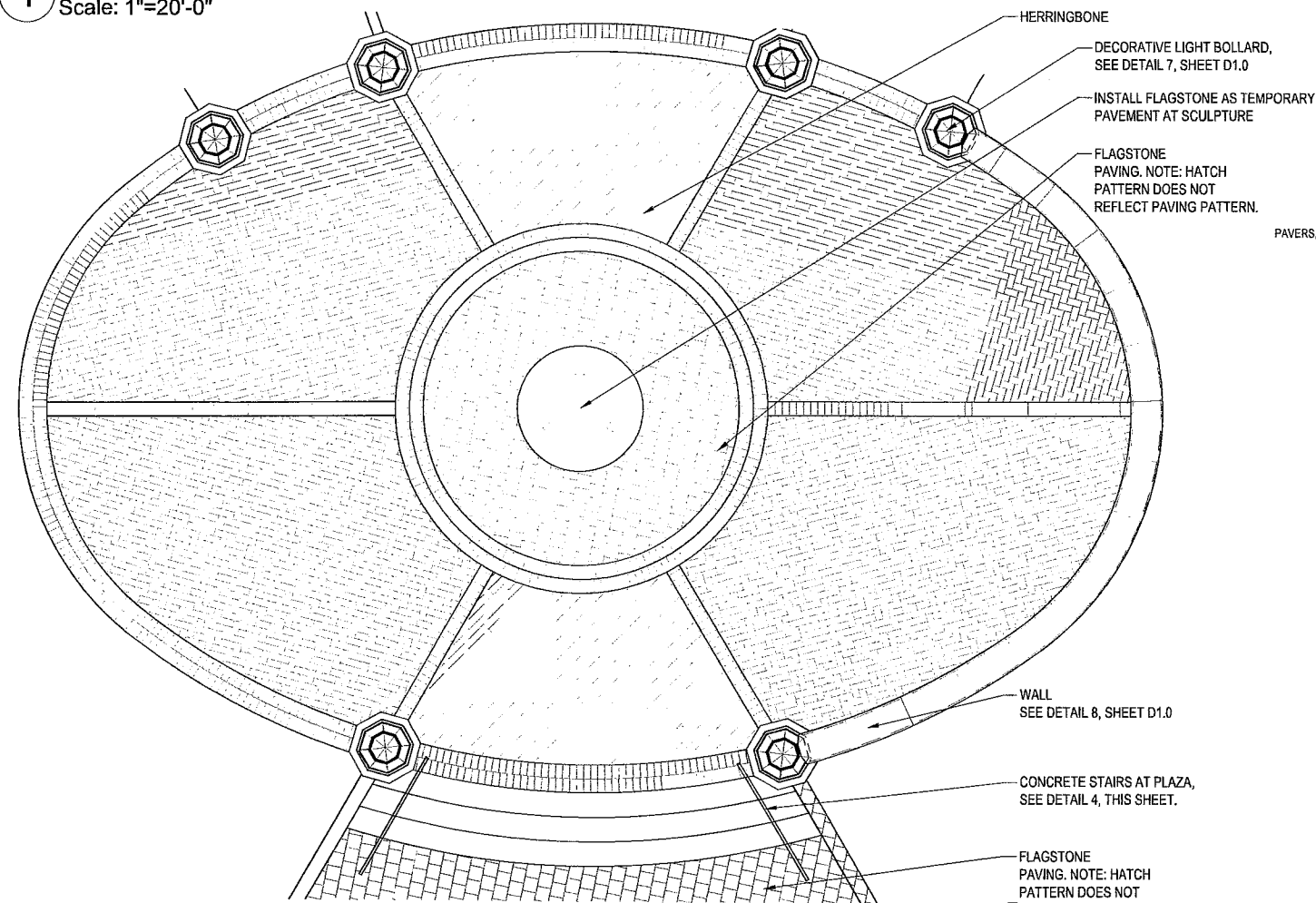
Drawing Sheet

D1.0

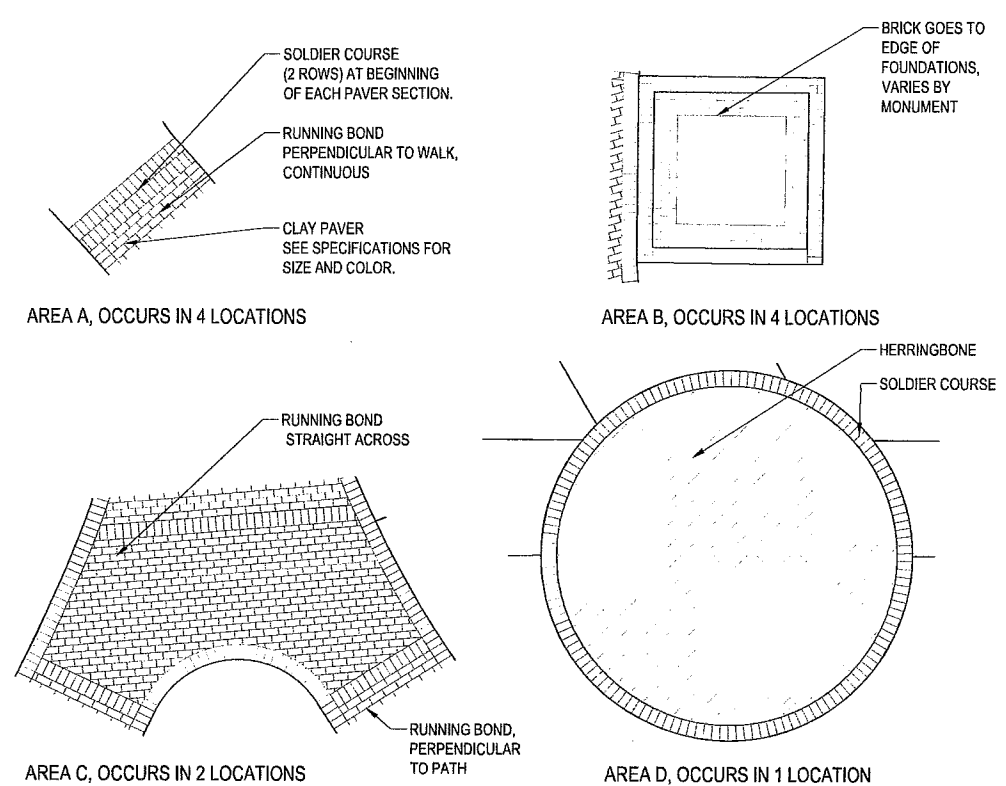




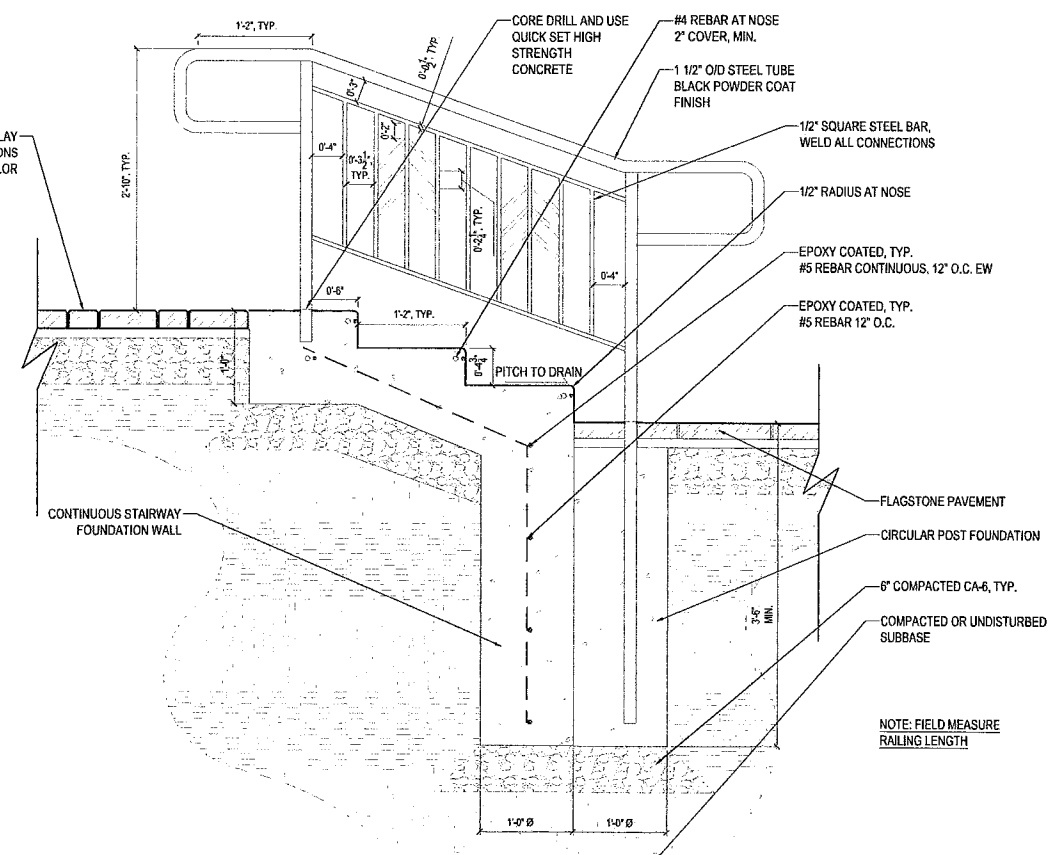
**1 Overall Paver Plan**  
Scale: 1"=20'-0"



**3 Area E**  
Scale: 1/4"=1'-0"



**2 Paver Area Enlargements**  
Scale: 1/4"=1'-0"



**4 Concrete Stairs at Plaza**  
Scale: 1"=1'-0"

# St. Charles Parking Lot

## St. Charles, Illinois

### PAVING PATTERNS

Date of Issue:	5/14/2014		
Project No:			
Designed By:	Drawn By:	Checked By:	
Issued For:			
No:	Date:	By:	
Revision #1	3/27/14	ML	

Drawing	Sheet
	D1.1